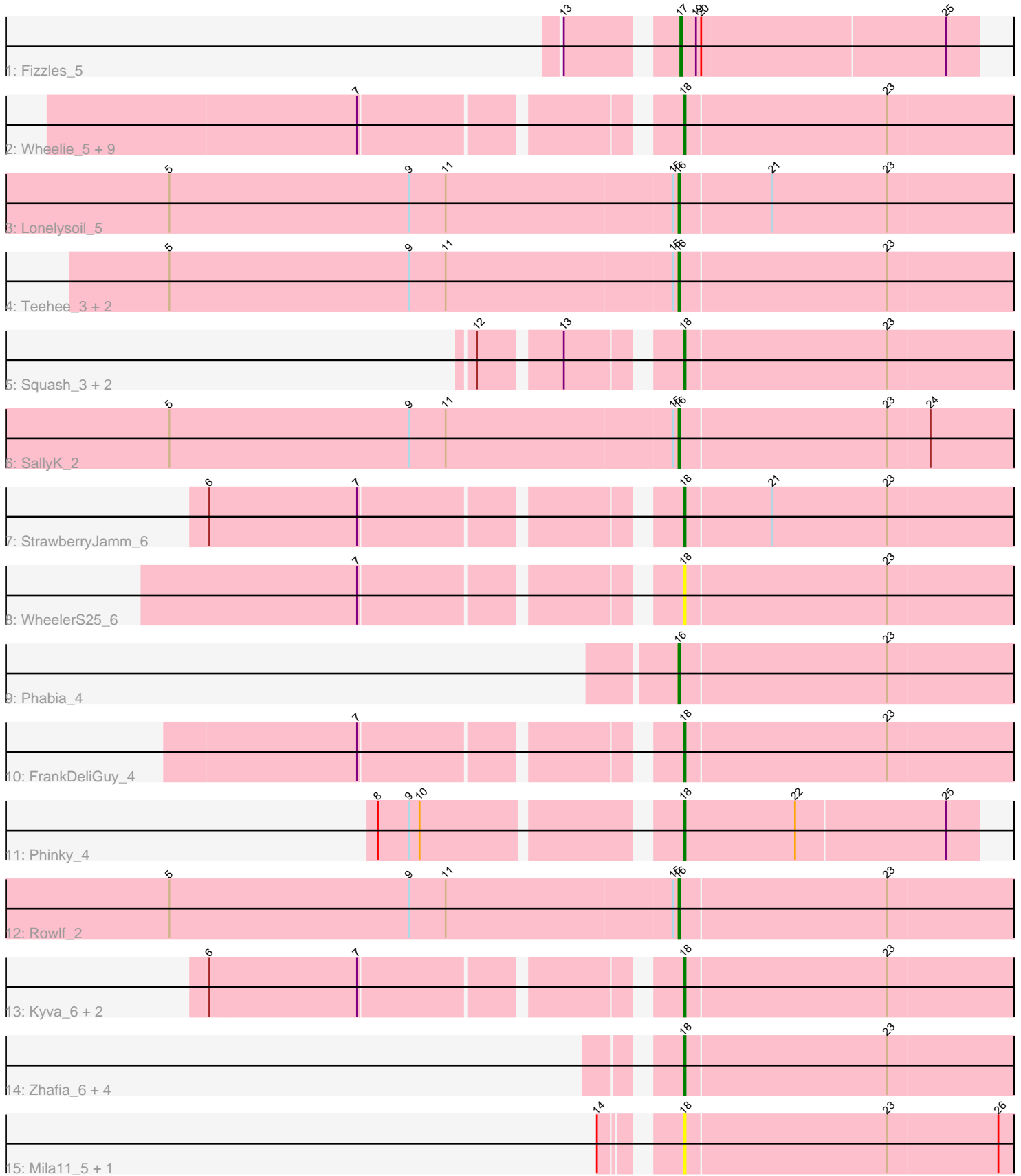


Zoomed Pham 296769



Note: Tracks are now grouped by subcluster and scaled. Switching in subcluster is indicated by changes in track color. Track scale is now set by default to display the region 30 bp upstream of start 1 to 30 bp downstream of the last possible start. If this default region is judged to be packed too tightly with annotated starts, the track will be further scaled to only show that region of the ORF with annotated starts. This action will be indicated by adding "Zoomed" to the title. For starts, yellow indicates the location of called starts comprised solely of Glimmer/GeneMark auto-annotations, green indicates the location of called starts with at least 1 manual gene annotation.

Pham 296769 Report

This analysis was run 04/25/26 on database version 644.

Pham number 296769 has 35 members, 5 are drafts.

Phages represented in each track:

- Track 1 : Fizzles_5
- Track 2 : Wheelie_5, EverythinBagel_3, Wayne3_5, Quammi_4, Viceroy_5, Rudy_4, Llemily_5, Sillytadpoles_5, Casend_5, DonaldDuck_5
- Track 3 : Lonelysoil_5
- Track 4 : Teehee_3, Jehoshaphat_3, Zagie_3
- Track 5 : Squash_3, Nike_4, MorillMayhem_4
- Track 6 : SallyK_2
- Track 7 : StrawberryJamm_6
- Track 8 : WheelerS25_6
- Track 9 : Phabia_4
- Track 10 : FrankDeliGuy_4
- Track 11 : Phinky_4
- Track 12 : Rowlf_2
- Track 13 : Kyva_6, Grassboy_5, Statler_4
- Track 14 : Zhafia_6, BabyDotz_4, Judebell_5, Namago_3, SlySloth_5
- Track 15 : Mila11_5, BaconCheese_4

Summary of Final Annotations (See graph section above for start numbers):

The start number called the most often in the published annotations is 18, it was called in 22 of the 30 non-draft genes in the pham.

Genes that call this "Most Annotated" start:

- BabyDotz_4, BaconCheese_4, Casend_5, DonaldDuck_5, EverythinBagel_3, FrankDeliGuy_4, Grassboy_5, Judebell_5, Kyva_6, Llemily_5, Mila11_5, MorillMayhem_4, Namago_3, Nike_4, Phinky_4, Quammi_4, Rudy_4, Sillytadpoles_5, SlySloth_5, Squash_3, Statler_4, StrawberryJamm_6, Viceroy_5, Wayne3_5, WheelerS25_6, Wheelie_5, Zhafia_6,

Genes that have the "Most Annotated" start but do not call it:

-

Genes that do not have the "Most Annotated" start:

- Fizzles_5, Jehoshaphat_3, Lonelysoil_5, Phabia_4, Rowlf_2, SallyK_2, Teehee_3, Zagie_3,

Summary by start number:

Start 16:

- Found in 7 of 35 (20.0%) of genes in pham
- Manual Annotations of this start: 7 of 30
- Called 100.0% of time when present
- Phage (with cluster) where this start called: Jehoshaphat_3 (EG), Lonelysoil_5 (EG), Phabia_4 (EG), Rowlf_2 (EG), SallyK_2 (EG), Teehee_3 (EG), Zagie_3 (EG),

Start 17:

- Found in 1 of 35 (2.9%) of genes in pham
- Manual Annotations of this start: 1 of 30
- Called 100.0% of time when present
- Phage (with cluster) where this start called: Fizzles_5 (EG),

Start 18:

- Found in 27 of 35 (77.1%) of genes in pham
- Manual Annotations of this start: 22 of 30
- Called 100.0% of time when present
- Phage (with cluster) where this start called: BabyDotz_4 (EG), BaconCheese_4 (EG), Casend_5 (EG), DonaldDuck_5 (EG), EverythinBagel_3 (EG), FrankDeliGuy_4 (EG), Grassboy_5 (EG), Judebell_5 (EG), Kyva_6 (EG), Llemily_5 (EG), Mila11_5 (EG), MorillMayhem_4 (EG), Namago_3 (EG), Nike_4 (EG), Phinky_4 (EG), Quammi_4 (EG), Rudy_4 (EG), Sillytadpoles_5 (EG), SlySloth_5 (EG), Squash_3 (EG), Statler_4 (EG), StrawberryJamm_6 (EG), Viceroy_5 (EG), Wayne3_5 (EG), WheelerS25_6 (EG), Wheelie_5 (EG), Zhafia_6 (EG),

Summary by clusters:

There is one cluster represented in this pham: EG

Info for manual annotations of cluster EG:

- Start number 16 was manually annotated 7 times for cluster EG.
- Start number 17 was manually annotated 1 time for cluster EG.
- Start number 18 was manually annotated 22 times for cluster EG.

Gene Information:

Gene: BabyDotz_4 Start: 1860, Stop: 1675, Start Num: 18

Candidate Starts for BabyDotz_4:

(Start: 18 @1860 has 22 MA's), (23, 1746),

Gene: BaconCheese_4 Start: 1577, Stop: 1392, Start Num: 18

Candidate Starts for BaconCheese_4:

(14, 1610), (Start: 18 @1577 has 22 MA's), (23, 1463), (26, 1400),

Gene: Casend_5 Start: 1750, Stop: 1565, Start Num: 18

Candidate Starts for Casend_5:

(7, 1909), (Start: 18 @1750 has 22 MA's), (23, 1636),

Gene: DonaldDuck_5 Start: 1505, Stop: 1320, Start Num: 18

Candidate Starts for DonaldDuck_5:

(7, 1664), (Start: 18 @1505 has 22 MA's), (23, 1391),

Gene: EverythinBagel_3 Start: 1601, Stop: 1416, Start Num: 18

Candidate Starts for EverythinBagel_3:

(7, 1760), (Start: 18 @1601 has 22 MA's), (23, 1487),

Gene: Fizzles_5 Start: 1908, Stop: 1744, Start Num: 17

Candidate Starts for Fizzles_5:

(13, 1962), (Start: 17 @1908 has 1 MA's), (19, 1899), (20, 1896), (25, 1761),

Gene: FrankDeliGuy_4 Start: 1641, Stop: 1456, Start Num: 18

Candidate Starts for FrankDeliGuy_4:

(7, 1800), (Start: 18 @1641 has 22 MA's), (23, 1527),

Gene: Grassboy_5 Start: 1745, Stop: 1560, Start Num: 18

Candidate Starts for Grassboy_5:

(6, 1988), (7, 1904), (Start: 18 @1745 has 22 MA's), (23, 1631),

Gene: Jehoshaphat_3 Start: 1386, Stop: 1198, Start Num: 16

Candidate Starts for Jehoshaphat_3:

(5, 1677), (9, 1539), (11, 1518), (15, 1389), (Start: 16 @1386 has 7 MA's), (23, 1269),

Gene: Judebell_5 Start: 1845, Stop: 1660, Start Num: 18

Candidate Starts for Judebell_5:

(Start: 18 @1845 has 22 MA's), (23, 1731),

Gene: Kyva_6 Start: 1780, Stop: 1595, Start Num: 18

Candidate Starts for Kyva_6:

(6, 2023), (7, 1939), (Start: 18 @1780 has 22 MA's), (23, 1666),

Gene: Llemily_5 Start: 1506, Stop: 1321, Start Num: 18

Candidate Starts for Llemily_5:

(7, 1665), (Start: 18 @1506 has 22 MA's), (23, 1392),

Gene: Lonelysoil_5 Start: 1622, Stop: 1434, Start Num: 16

Candidate Starts for Lonelysoil_5:

(1, 2378), (4, 2141), (5, 1913), (9, 1775), (11, 1754), (15, 1625), (Start: 16 @1622 has 7 MA's), (21, 1571), (23, 1505),

Gene: Mila11_5 Start: 1562, Stop: 1377, Start Num: 18

Candidate Starts for Mila11_5:

(14, 1595), (Start: 18 @1562 has 22 MA's), (23, 1448), (26, 1385),

Gene: MorillMayhem_4 Start: 1579, Stop: 1394, Start Num: 18

Candidate Starts for MorillMayhem_4:

(12, 1675), (13, 1633), (Start: 18 @1579 has 22 MA's), (23, 1465),

Gene: Namago_3 Start: 1173, Stop: 988, Start Num: 18

Candidate Starts for Namago_3:

(Start: 18 @1173 has 22 MA's), (23, 1059),

Gene: Nike_4 Start: 1628, Stop: 1443, Start Num: 18

Candidate Starts for Nike_4:

(12, 1724), (13, 1682), (Start: 18 @1628 has 22 MA's), (23, 1514),

Gene: Phabia_4 Start: 1509, Stop: 1321, Start Num: 16

Candidate Starts for Phabia_4:

(Start: 16 @1509 has 7 MA's), (23, 1392),

Gene: Phinky_4 Start: 1423, Stop: 1259, Start Num: 18

Candidate Starts for Phinky_4:

(8, 1579), (9, 1561), (10, 1555), (Start: 18 @1423 has 22 MA's), (22, 1360), (25, 1276),

Gene: Quammi_4 Start: 1510, Stop: 1325, Start Num: 18

Candidate Starts for Quammi_4:

(7, 1669), (Start: 18 @1510 has 22 MA's), (23, 1396),

Gene: Rowlf_2 Start: 1225, Stop: 1037, Start Num: 16

Candidate Starts for Rowlf_2:

(3, 1864), (4, 1744), (5, 1516), (9, 1378), (11, 1357), (15, 1228), (Start: 16 @1225 has 7 MA's), (23, 1108),

Gene: Rudy_4 Start: 1510, Stop: 1325, Start Num: 18

Candidate Starts for Rudy_4:

(7, 1669), (Start: 18 @1510 has 22 MA's), (23, 1396),

Gene: SallyK_2 Start: 1125, Stop: 937, Start Num: 16

Candidate Starts for SallyK_2:

(2, 1866), (5, 1416), (9, 1278), (11, 1257), (15, 1128), (Start: 16 @1125 has 7 MA's), (23, 1008), (24, 984),

Gene: Sillytadpoles_5 Start: 1508, Stop: 1323, Start Num: 18

Candidate Starts for Sillytadpoles_5:

(7, 1667), (Start: 18 @1508 has 22 MA's), (23, 1394),

Gene: SlySloth_5 Start: 1863, Stop: 1678, Start Num: 18

Candidate Starts for SlySloth_5:

(Start: 18 @1863 has 22 MA's), (23, 1749),

Gene: Squash_3 Start: 1187, Stop: 1002, Start Num: 18

Candidate Starts for Squash_3:

(12, 1283), (13, 1241), (Start: 18 @1187 has 22 MA's), (23, 1073),

Gene: Statler_4 Start: 1565, Stop: 1380, Start Num: 18

Candidate Starts for Statler_4:

(6, 1808), (7, 1724), (Start: 18 @1565 has 22 MA's), (23, 1451),

Gene: StrawberryJamm_6 Start: 1773, Stop: 1588, Start Num: 18

Candidate Starts for StrawberryJamm_6:

(6, 2016), (7, 1932), (Start: 18 @1773 has 22 MA's), (21, 1725), (23, 1659),

Gene: Teehee_3 Start: 1386, Stop: 1198, Start Num: 16

Candidate Starts for Teehee_3:

(5, 1677), (9, 1539), (11, 1518), (15, 1389), (Start: 16 @1386 has 7 MA's), (23, 1269),

Gene: Viceroy_5 Start: 1510, Stop: 1325, Start Num: 18

Candidate Starts for Viceroy_5:

(7, 1669), (Start: 18 @1510 has 22 MA's), (23, 1396),

Gene: Wayne3_5 Start: 1745, Stop: 1560, Start Num: 18

Candidate Starts for Wayne3_5:

(7, 1904), (Start: 18 @1745 has 22 MA's), (23, 1631),

Gene: WheelerS25_6 Start: 2305, Stop: 2120, Start Num: 18

Candidate Starts for WheelerS25_6:

(7, 2464), (Start: 18 @2305 has 22 MA's), (23, 2191),

Gene: Wheelie_5 Start: 1505, Stop: 1320, Start Num: 18

Candidate Starts for Wheelie_5:

(7, 1664), (Start: 18 @1505 has 22 MA's), (23, 1391),

Gene: Zagie_3 Start: 1181, Stop: 993, Start Num: 16

Candidate Starts for Zagie_3:

(5, 1472), (9, 1334), (11, 1313), (15, 1184), (Start: 16 @1181 has 7 MA's), (23, 1064),

Gene: Zhafia_6 Start: 1843, Stop: 1658, Start Num: 18

Candidate Starts for Zhafia_6:

(Start: 18 @1843 has 22 MA's), (23, 1729),