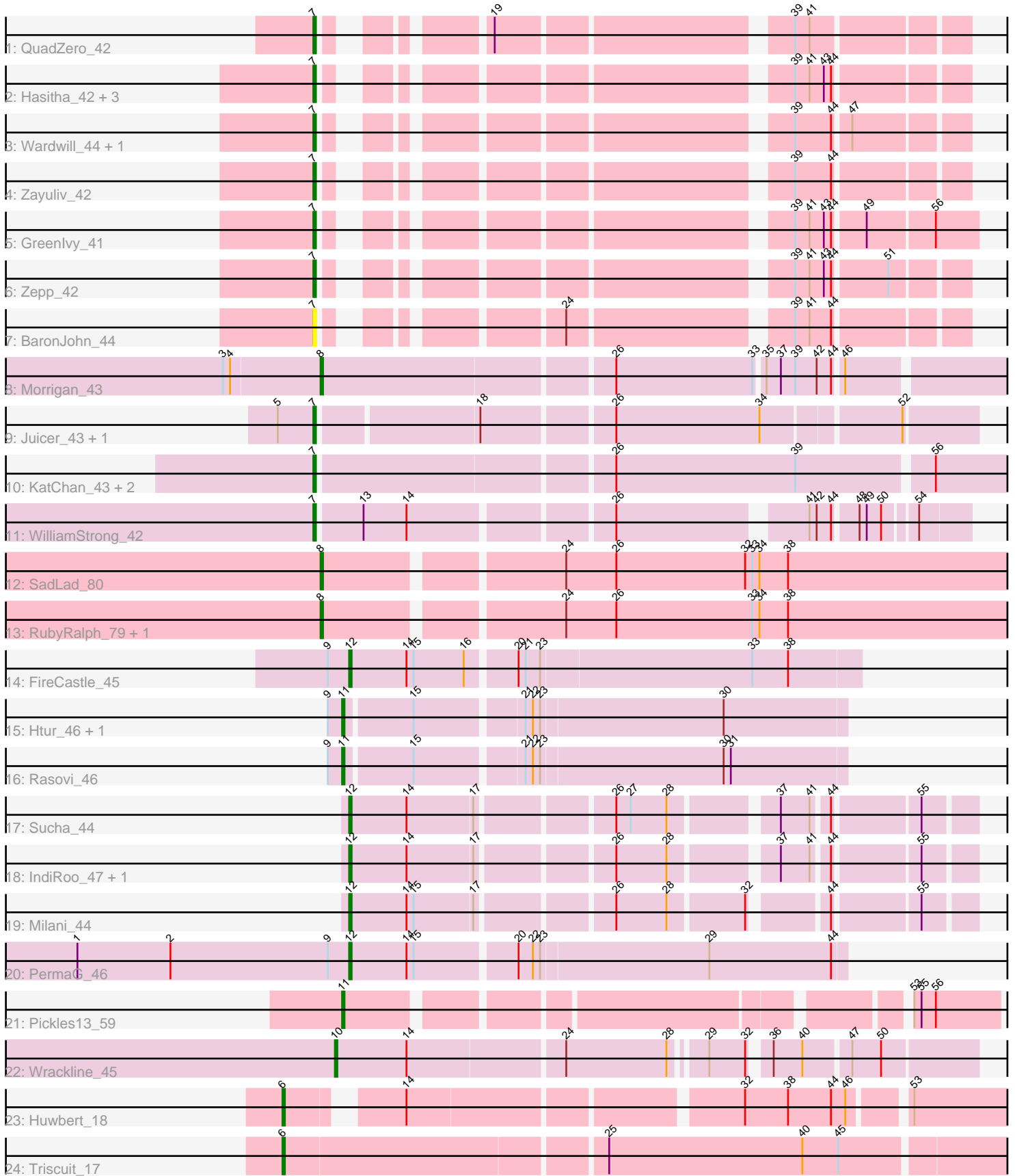


Pham 296778



Note: Tracks are now grouped by subcluster and scaled. Switching in subcluster is indicated by changes in track color. Track scale is now set by default to display the region 30 bp upstream of start 1 to 30 bp downstream of the last possible start. If this default region is judged to be packed too tightly with annotated starts, the track will be further scaled to only show that region of the ORF with annotated starts. This action will be indicated by adding "Zoomed" to the title. For starts, yellow indicates the location of called starts comprised solely of Glimmer/GeneMark auto-annotations, green indicates the location of called starts with at least 1 manual gene annotation.

Pham 296778 Report

This analysis was run 04/25/26 on database version 644.

Pham number 296778 has 34 members, 1 are drafts.

Phages represented in each track:

- Track 1 : QuadZero_42
- Track 2 : Hasitha_42, CaptainRex_42, Librie_42, Fulton_42
- Track 3 : Wardwill_44, LilTerminator_42
- Track 4 : Zayuliv_42
- Track 5 : Greenlvy_41
- Track 6 : Zepp_42
- Track 7 : BaronJohn_44
- Track 8 : Morrigan_43
- Track 9 : Juicer_43, Jemerald_43
- Track 10 : KatChan_43, Chepli_43, Luna18_43
- Track 11 : WilliamStrong_42
- Track 12 : SadLad_80
- Track 13 : RubyRalph_79, Fransoyer_77
- Track 14 : FireCastle_45
- Track 15 : Htur_46, Linayshia_46
- Track 16 : Rasovi_46
- Track 17 : Sucha_44
- Track 18 : IndiRoo_47, Benry_46
- Track 19 : Milani_44
- Track 20 : PermaG_46
- Track 21 : Pickles13_59
- Track 22 : Wrackline_45
- Track 23 : Huwbert_18
- Track 24 : Triscuit_17

Summary of Final Annotations (See graph section above for start numbers):

The start number called the most often in the published annotations is 7, it was called in 16 of the 33 non-draft genes in the pham.

Genes that call this "Most Annotated" start:

- BaronJohn_44, CaptainRex_42, Chepli_43, Fulton_42, Greenlvy_41, Hasitha_42, Jemerald_43, Juicer_43, KatChan_43, Librie_42, LilTerminator_42, Luna18_43, QuadZero_42, Wardwill_44, WilliamStrong_42, Zayuliv_42, Zepp_42,

Genes that have the "Most Annotated" start but do not call it:

-

Genes that do not have the "Most Annotated" start:

- Benry_46, FireCastle_45, Fransoyer_77, Htur_46, Huwbert_18, IndiRoo_47, Linayshia_46, Milani_44, Morrigan_43, PermaG_46, Pickles13_59, Rasovi_46, RubyRalph_79, SadLad_80, Sucha_44, Triscuit_17, Wrackline_45,

Summary by start number:

Start 6:

- Found in 2 of 34 (5.9%) of genes in pham
- Manual Annotations of this start: 2 of 33
- Called 100.0% of time when present
- Phage (with cluster) where this start called: Huwbert_18 (GG), Triscuit_17 (GG),

Start 7:

- Found in 17 of 34 (50.0%) of genes in pham
- Manual Annotations of this start: 16 of 33
- Called 100.0% of time when present
- Phage (with cluster) where this start called: BaronJohn_44 (EA5), CaptainRex_42 (EA5), Chepli_43 (EA6), Fulton_42 (EA5), Greenlvy_41 (EA5), Hasitha_42 (EA5), Jemerald_43 (EA6), Juicer_43 (EA6), KatChan_43 (EA6), Librie_42 (EA5), LilTerminator_42 (EA5), Luna18_43 (EA6), QuadZero_42 (EA5), Wardwill_44 (EA5), WilliamStrong_42 (EA6), Zayuliv_42 (EA5), Zepp_42 (EA5),

Start 8:

- Found in 4 of 34 (11.8%) of genes in pham
- Manual Annotations of this start: 4 of 33
- Called 100.0% of time when present
- Phage (with cluster) where this start called: Fransoyer_77 (EG), Morrigan_43 (EA6), RubyRalph_79 (EG), SadLad_80 (EG),

Start 10:

- Found in 1 of 34 (2.9%) of genes in pham
- Manual Annotations of this start: 1 of 33
- Called 100.0% of time when present
- Phage (with cluster) where this start called: Wrackline_45 (GF),

Start 11:

- Found in 4 of 34 (11.8%) of genes in pham
- Manual Annotations of this start: 4 of 33
- Called 100.0% of time when present
- Phage (with cluster) where this start called: Htur_46 (EJ), Linayshia_46 (EJ), Pickles13_59 (GA), Rasovi_46 (EJ),

Start 12:

- Found in 6 of 34 (17.6%) of genes in pham
- Manual Annotations of this start: 6 of 33
- Called 100.0% of time when present
- Phage (with cluster) where this start called: Benry_46 (EJ), FireCastle_45 (EJ), IndiRoo_47 (EJ), Milani_44 (EJ), PermaG_46 (EJ), Sucha_44 (EJ),

Summary by clusters:

There are 7 clusters represented in this pham: EJ, EG, GG, GF, GA, EA5, EA6,

Info for manual annotations of cluster EA5:

- Start number 7 was manually annotated 10 times for cluster EA5.

Info for manual annotations of cluster EA6:

- Start number 7 was manually annotated 6 times for cluster EA6.
- Start number 8 was manually annotated 1 time for cluster EA6.

Info for manual annotations of cluster EG:

- Start number 8 was manually annotated 3 times for cluster EG.

Info for manual annotations of cluster EJ:

- Start number 11 was manually annotated 3 times for cluster EJ.
- Start number 12 was manually annotated 6 times for cluster EJ.

Info for manual annotations of cluster GA:

- Start number 11 was manually annotated 1 time for cluster GA.

Info for manual annotations of cluster GF:

- Start number 10 was manually annotated 1 time for cluster GF.

Info for manual annotations of cluster GG:

- Start number 6 was manually annotated 2 times for cluster GG.

Gene Information:

Gene: BaronJohn_44 Start: 30319, Stop: 30095, Start Num: 7

Candidate Starts for BaronJohn_44:

(Start: 7 @30319 has 16 MA's), (24, 30244), (39, 30160), (41, 30154), (44, 30145),

Gene: Benry_46 Start: 28257, Stop: 28490, Start Num: 12

Candidate Starts for Benry_46:

(Start: 12 @28257 has 6 MA's), (14, 28281), (17, 28308), (26, 28359), (28, 28380), (37, 28419), (41, 28431), (44, 28437), (55, 28470),

Gene: CaptainRex_42 Start: 29567, Stop: 29343, Start Num: 7

Candidate Starts for CaptainRex_42:

(Start: 7 @29567 has 16 MA's), (39, 29408), (41, 29402), (43, 29396), (44, 29393),

Gene: Chepli_43 Start: 30856, Stop: 30521, Start Num: 7

Candidate Starts for Chepli_43:

(Start: 7 @30856 has 16 MA's), (26, 30739), (39, 30664), (56, 30610),

Gene: FireCastle_45 Start: 29401, Stop: 29607, Start Num: 12

Candidate Starts for FireCastle_45:

(9, 29392), (Start: 12 @29401 has 6 MA's), (14, 29425), (15, 29428), (16, 29449), (20, 29467), (21, 29470), (23, 29476), (33, 29563), (38, 29578),

Gene: Fransoyer_77 Start: 52088, Stop: 51798, Start Num: 8

Candidate Starts for Fransoyer_77:

(Start: 8 @52088 has 4 MA's), (24, 51995), (26, 51974), (33, 51917), (34, 51914), (38, 51902),

Gene: Fulton_42 Start: 29568, Stop: 29344, Start Num: 7

Candidate Starts for Fulton_42:

(Start: 7 @29568 has 16 MA's), (39, 29409), (41, 29403), (43, 29397), (44, 29394),

Gene: Greenlvy_41 Start: 29908, Stop: 29678, Start Num: 7

Candidate Starts for Greenlvy_41:

(Start: 7 @29908 has 16 MA's), (39, 29749), (41, 29743), (43, 29737), (44, 29734), (49, 29722), (56, 29695),

Gene: Hasitha_42 Start: 29580, Stop: 29356, Start Num: 7

Candidate Starts for Hasitha_42:

(Start: 7 @29580 has 16 MA's), (39, 29421), (41, 29415), (43, 29409), (44, 29406),

Gene: Htur_46 Start: 29833, Stop: 30033, Start Num: 11

Candidate Starts for Htur_46:

(9, 29827), (Start: 11 @29833 has 4 MA's), (15, 29860), (21, 29902), (22, 29905), (23, 29908), (30, 29983),

Gene: Huwbert_18 Start: 6388, Stop: 6663, Start Num: 6

Candidate Starts for Huwbert_18:

(Start: 6 @6388 has 2 MA's), (14, 6427), (32, 6556), (38, 6574), (44, 6592), (46, 6598), (53, 6619),

Gene: IndiRoo_47 Start: 28373, Stop: 28606, Start Num: 12

Candidate Starts for IndiRoo_47:

(Start: 12 @28373 has 6 MA's), (14, 28397), (17, 28424), (26, 28475), (28, 28496), (37, 28535), (41, 28547), (44, 28553), (55, 28586),

Gene: Jemerald_43 Start: 31971, Stop: 31714, Start Num: 7

Candidate Starts for Jemerald_43:

(5, 31986), (Start: 7 @31971 has 16 MA's), (18, 31908), (26, 31857), (34, 31797), (52, 31743),

Gene: Juicer_43 Start: 31971, Stop: 31714, Start Num: 7

Candidate Starts for Juicer_43:

(5, 31986), (Start: 7 @31971 has 16 MA's), (18, 31908), (26, 31857), (34, 31797), (52, 31743),

Gene: KatChan_43 Start: 30868, Stop: 30533, Start Num: 7

Candidate Starts for KatChan_43:

(Start: 7 @30868 has 16 MA's), (26, 30751), (39, 30676), (56, 30622),

Gene: Librie_42 Start: 29567, Stop: 29343, Start Num: 7

Candidate Starts for Librie_42:

(Start: 7 @29567 has 16 MA's), (39, 29408), (41, 29402), (43, 29396), (44, 29393),

Gene: LilTerminator_42 Start: 29589, Stop: 29365, Start Num: 7

Candidate Starts for LilTerminator_42:

(Start: 7 @29589 has 16 MA's), (39, 29430), (44, 29415), (47, 29409),

Gene: Linayshia_46 Start: 29801, Stop: 30001, Start Num: 11

Candidate Starts for Linayshia_46:

(9, 29795), (Start: 11 @29801 has 4 MA's), (15, 29828), (21, 29870), (22, 29873), (23, 29876), (30, 29951),

Gene: Luna18_43 Start: 30868, Stop: 30533, Start Num: 7

Candidate Starts for Luna18_43:

(Start: 7 @30868 has 16 MA's), (26, 30751), (39, 30676), (56, 30622),

Gene: Milani_44 Start: 28679, Stop: 28912, Start Num: 12

Candidate Starts for Milani_44:

(Start: 12 @28679 has 6 MA's), (14, 28703), (15, 28706), (17, 28730), (26, 28781), (28, 28802), (32, 28832), (44, 28859), (55, 28892),

Gene: Morrigan_43 Start: 30869, Stop: 30540, Start Num: 8

Candidate Starts for Morrigan_43:

(3, 30908), (4, 30905), (Start: 8 @30869 has 4 MA's), (26, 30752), (33, 30695), (35, 30692), (37, 30686), (39, 30680), (42, 30671), (44, 30665), (46, 30662),

Gene: PermaG_46 Start: 29499, Stop: 29699, Start Num: 12

Candidate Starts for PermaG_46:

(1, 29385), (2, 29424), (9, 29490), (Start: 12 @29499 has 6 MA's), (14, 29523), (15, 29526), (20, 29565), (22, 29571), (23, 29574), (29, 29643), (44, 29694),

Gene: Pickles13_59 Start: 35548, Stop: 35790, Start Num: 11

Candidate Starts for Pickles13_59:

(Start: 11 @35548 has 4 MA's), (53, 35755), (55, 35758), (56, 35764),

Gene: QuadZero_42 Start: 29737, Stop: 29513, Start Num: 7

Candidate Starts for QuadZero_42:

(Start: 7 @29737 has 16 MA's), (19, 29689), (39, 29578), (41, 29572),

Gene: Rasovi_46 Start: 29833, Stop: 30033, Start Num: 11

Candidate Starts for Rasovi_46:

(9, 29827), (Start: 11 @29833 has 4 MA's), (15, 29860), (21, 29902), (22, 29905), (23, 29908), (30, 29983), (31, 29986),

Gene: RubyRalph_79 Start: 52113, Stop: 51823, Start Num: 8

Candidate Starts for RubyRalph_79:

(Start: 8 @52113 has 4 MA's), (24, 52020), (26, 51999), (33, 51942), (34, 51939), (38, 51927),

Gene: SadLad_80 Start: 53019, Stop: 52729, Start Num: 8

Candidate Starts for SadLad_80:

(Start: 8 @53019 has 4 MA's), (24, 52926), (26, 52905), (32, 52851), (33, 52848), (34, 52845), (38, 52833),

Gene: Sucha_44 Start: 27874, Stop: 28107, Start Num: 12

Candidate Starts for Sucha_44:

(Start: 12 @27874 has 6 MA's), (14, 27898), (17, 27925), (26, 27976), (27, 27982), (28, 27997), (37, 28036), (41, 28048), (44, 28054), (55, 28087),

Gene: Triscuit_17 Start: 6303, Stop: 6596, Start Num: 6

Candidate Starts for Triscuit_17:

(Start: 6 @6303 has 2 MA's), (25, 6432), (40, 6513), (45, 6528),

Gene: Wardwill_44 Start: 29751, Stop: 29527, Start Num: 7
Candidate Starts for Wardwill_44:
(Start: 7 @29751 has 16 MA's), (39, 29592), (44, 29577), (47, 29571),

Gene: WilliamStrong_42 Start: 31432, Stop: 31187, Start Num: 7
Candidate Starts for WilliamStrong_42:
(Start: 7 @31432 has 16 MA's), (13, 31414), (14, 31396), (26, 31318), (41, 31246), (42, 31243), (44, 31237), (48, 31228), (49, 31225), (50, 31219), (54, 31207),

Gene: Wrackline_45 Start: 25461, Stop: 25213, Start Num: 10
Candidate Starts for Wrackline_45:
(Start: 10 @25461 has 1 MA's), (14, 25431), (24, 25368), (28, 25326), (29, 25314), (32, 25299), (36, 25293), (40, 25281), (47, 25263), (50, 25251),

Gene: Zayuliv_42 Start: 30190, Stop: 29966, Start Num: 7
Candidate Starts for Zayuliv_42:
(Start: 7 @30190 has 16 MA's), (39, 30031), (44, 30016),

Gene: Zepp_42 Start: 29624, Stop: 29400, Start Num: 7
Candidate Starts for Zepp_42:
(Start: 7 @29624 has 16 MA's), (39, 29465), (41, 29459), (43, 29453), (44, 29450), (51, 29429),