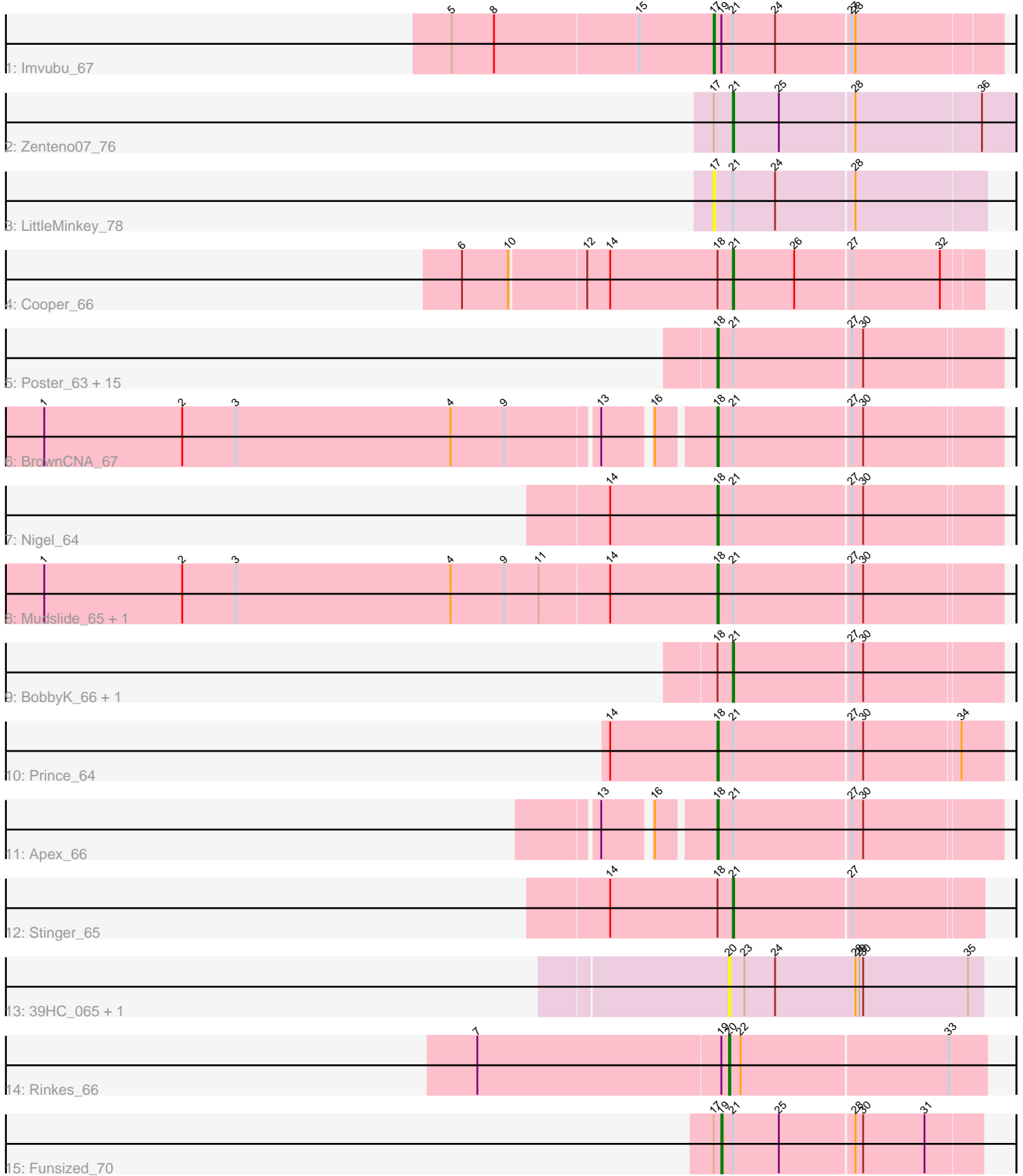


Pham 296788



Note: Tracks are now grouped by subcluster and scaled. Switching in subcluster is indicated by changes in track color. Track scale is now set by default to display the region 30 bp upstream of start 1 to 30 bp downstream of the last possible start. If this default region is judged to be packed too tightly with annotated starts, the track will be further scaled to only show that region of the ORF with annotated starts. This action will be indicated by adding "Zoomed" to the title. For starts, yellow indicates the location of called starts comprised solely of Glimmer/GeneMark auto-annotations, green indicates the location of called starts with at least 1 manual gene annotation.

Pham 296788 Report

This analysis was run 04/25/26 on database version 644.

Pham number 296788 has 33 members, 12 are drafts.

Phages represented in each track:

- Track 1 : Imvubu_67
- Track 2 : Zenteno07_76
- Track 3 : LittleMinkey_78
- Track 4 : Cooper_66
- Track 5 : Poster_63, Frederick_67, Nanao_64, Lambano_63, Renkei_63, Epah_63, Hally898_63, LittleDigger_63, Hydro_66, JAMaL_65, Antihero_63, GinPorsche_65, Heath_65, Hangman_66, Magpie_63, Ahwei_63
- Track 6 : BrownCNA_67
- Track 7 : Nigel_64
- Track 8 : Mudslide_65, Waleliano_65
- Track 9 : BobbyK_66, ChrisnMich_65
- Track 10 : Prince_64
- Track 11 : Apex_66
- Track 12 : Stinger_65
- Track 13 : 39HC_065, 40BC_065
- Track 14 : Rinkes_66
- Track 15 : Funsized_70

Summary of Final Annotations (See graph section above for start numbers):

The start number called the most often in the published annotations is 18, it was called in 13 of the 21 non-draft genes in the pham.

Genes that call this "Most Annotated" start:

- Ahwei_63, Antihero_63, Apex_66, BrownCNA_67, Epah_63, Frederick_67, GinPorsche_65, Hally898_63, Hangman_66, Heath_65, Hydro_66, JAMaL_65, Lambano_63, LittleDigger_63, Magpie_63, Mudslide_65, Nanao_64, Nigel_64, Poster_63, Prince_64, Renkei_63, Waleliano_65,

Genes that have the "Most Annotated" start but do not call it:

- BobbyK_66, ChrisnMich_65, Cooper_66, Stinger_65,

Genes that do not have the "Most Annotated" start:

- 39HC_065, 40BC_065, Funsized_70, Imvubu_67, LittleMinkey_78, Rinkes_66, Zenteno07_76,

Summary by start number:

Start 17:

- Found in 4 of 33 (12.1%) of genes in pham
- Manual Annotations of this start: 1 of 21
- Called 50.0% of time when present
- Phage (with cluster) where this start called: Imvubu_67 (B10), LittleMinkey_78 (B13),

Start 18:

- Found in 26 of 33 (78.8%) of genes in pham
- Manual Annotations of this start: 13 of 21
- Called 84.6% of time when present
- Phage (with cluster) where this start called: Ahwei_63 (B4), Antihero_63 (B4), Apex_66 (B4), BrownCNA_67 (B4), Epah_63 (B4), Frederick_67 (B4), GinPorsche_65 (B4), Hally898_63 (B4), Hangman_66 (B4), Heath_65 (B4), Hydro_66 (B4), JAMaL_65 (B4), Lambano_63 (B4), LittleDigger_63 (B4), Magpie_63 (B4), Mudslide_65 (B4), Nanao_64 (B4), Nigel_64 (B4), Poster_63 (B4), Prince_64 (B4), Renkei_63 (B4), Waleliano_65 (B4),

Start 19:

- Found in 3 of 33 (9.1%) of genes in pham
- Manual Annotations of this start: 1 of 21
- Called 33.3% of time when present
- Phage (with cluster) where this start called: Funsized_70 (B9),

Start 20:

- Found in 3 of 33 (9.1%) of genes in pham
- Manual Annotations of this start: 1 of 21
- Called 100.0% of time when present
- Phage (with cluster) where this start called: 39HC_065 (B6), 40BC_065 (B6), Rinkes_66 (B9),

Start 21:

- Found in 30 of 33 (90.9%) of genes in pham
- Manual Annotations of this start: 5 of 21
- Called 16.7% of time when present
- Phage (with cluster) where this start called: BobbyK_66 (B4), ChrisnMich_65 (B4), Cooper_66 (B4), Stinger_65 (B4), Zenteno07_76 (B13),

Summary by clusters:

There are 5 clusters represented in this pham: B4, B6, B9, B10, B13,

Info for manual annotations of cluster B10:

- Start number 17 was manually annotated 1 time for cluster B10.

Info for manual annotations of cluster B13:

- Start number 21 was manually annotated 1 time for cluster B13.

Info for manual annotations of cluster B4:

- Start number 18 was manually annotated 13 times for cluster B4.
- Start number 21 was manually annotated 4 times for cluster B4.

Info for manual annotations of cluster B9:

- Start number 19 was manually annotated 1 time for cluster B9.
- Start number 20 was manually annotated 1 time for cluster B9.

Gene Information:

Gene: 39HC_065 Start: 57490, Stop: 57687, Start Num: 20

Candidate Starts for 39HC_065:

(Start: 20 @57490 has 1 MA's), (23, 57502), (24, 57526), (28, 57589), (29, 57592), (30, 57595), (35, 57676),

Gene: 40BC_065 Start: 57490, Stop: 57687, Start Num: 20

Candidate Starts for 40BC_065:

(Start: 20 @57490 has 1 MA's), (23, 57502), (24, 57526), (28, 57589), (29, 57592), (30, 57595), (35, 57676),

Gene: Ahwei_63 Start: 58052, Stop: 58267, Start Num: 18

Candidate Starts for Ahwei_63:

(Start: 18 @58052 has 13 MA's), (Start: 21 @58064 has 5 MA's), (27, 58154), (30, 58163),

Gene: Antihero_63 Start: 58050, Stop: 58265, Start Num: 18

Candidate Starts for Antihero_63:

(Start: 18 @58050 has 13 MA's), (Start: 21 @58062 has 5 MA's), (27, 58152), (30, 58161),

Gene: Apex_66 Start: 59146, Stop: 59361, Start Num: 18

Candidate Starts for Apex_66:

(13, 59071), (16, 59104), (Start: 18 @59146 has 13 MA's), (Start: 21 @59158 has 5 MA's), (27, 59248), (30, 59257),

Gene: BobbyK_66 Start: 58944, Stop: 59147, Start Num: 21

Candidate Starts for BobbyK_66:

(Start: 18 @58932 has 13 MA's), (Start: 21 @58944 has 5 MA's), (27, 59034), (30, 59043),

Gene: BrownCNA_67 Start: 59309, Stop: 59524, Start Num: 18

Candidate Starts for BrownCNA_67:

(1, 58805), (2, 58913), (3, 58955), (4, 59123), (9, 59165), (13, 59234), (16, 59267), (Start: 18 @59309 has 13 MA's), (Start: 21 @59321 has 5 MA's), (27, 59411), (30, 59420),

Gene: ChrisnMich_65 Start: 58046, Stop: 58249, Start Num: 21

Candidate Starts for ChrisnMich_65:

(Start: 18 @58034 has 13 MA's), (Start: 21 @58046 has 5 MA's), (27, 58136), (30, 58145),

Gene: Cooper_66 Start: 58486, Stop: 58674, Start Num: 21

Candidate Starts for Cooper_66:

(6, 58279), (10, 58315), (12, 58372), (14, 58390), (Start: 18 @58474 has 13 MA's), (Start: 21 @58486 has 5 MA's), (26, 58534), (27, 58576), (32, 58645),

Gene: Epah_63 Start: 58050, Stop: 58265, Start Num: 18
Candidate Starts for Epah_63:
(Start: 18 @58050 has 13 MA's), (Start: 21 @58062 has 5 MA's), (27, 58152), (30, 58161),

Gene: Frederick_67 Start: 59032, Stop: 59247, Start Num: 18
Candidate Starts for Frederick_67:
(Start: 18 @59032 has 13 MA's), (Start: 21 @59044 has 5 MA's), (27, 59134), (30, 59143),

Gene: Funsized_70 Start: 61025, Stop: 61222, Start Num: 19
Candidate Starts for Funsized_70:
(Start: 17 @61019 has 1 MA's), (Start: 19 @61025 has 1 MA's), (Start: 21 @61034 has 5 MA's), (25, 61070), (28, 61127), (30, 61133), (31, 61181),

Gene: GinPorsche_65 Start: 58050, Stop: 58265, Start Num: 18
Candidate Starts for GinPorsche_65:
(Start: 18 @58050 has 13 MA's), (Start: 21 @58062 has 5 MA's), (27, 58152), (30, 58161),

Gene: Hally898_63 Start: 58065, Stop: 58280, Start Num: 18
Candidate Starts for Hally898_63:
(Start: 18 @58065 has 13 MA's), (Start: 21 @58077 has 5 MA's), (27, 58167), (30, 58176),

Gene: Hangman_66 Start: 59231, Stop: 59446, Start Num: 18
Candidate Starts for Hangman_66:
(Start: 18 @59231 has 13 MA's), (Start: 21 @59243 has 5 MA's), (27, 59333), (30, 59342),

Gene: Heath_65 Start: 58858, Stop: 59073, Start Num: 18
Candidate Starts for Heath_65:
(Start: 18 @58858 has 13 MA's), (Start: 21 @58870 has 5 MA's), (27, 58960), (30, 58969),

Gene: Hydro_66 Start: 59169, Stop: 59384, Start Num: 18
Candidate Starts for Hydro_66:
(Start: 18 @59169 has 13 MA's), (Start: 21 @59181 has 5 MA's), (27, 59271), (30, 59280),

Gene: Imvubu_67 Start: 57772, Stop: 57990, Start Num: 17
Candidate Starts for Imvubu_67:
(5, 57571), (8, 57604), (15, 57715), (Start: 17 @57772 has 1 MA's), (Start: 19 @57778 has 1 MA's),
(Start: 21 @57787 has 5 MA's), (24, 57820), (27, 57877), (28, 57880),

Gene: JAMaL_65 Start: 59059, Stop: 59274, Start Num: 18
Candidate Starts for JAMaL_65:
(Start: 18 @59059 has 13 MA's), (Start: 21 @59071 has 5 MA's), (27, 59161), (30, 59170),

Gene: Lambano_63 Start: 58065, Stop: 58280, Start Num: 18
Candidate Starts for Lambano_63:
(Start: 18 @58065 has 13 MA's), (Start: 21 @58077 has 5 MA's), (27, 58167), (30, 58176),

Gene: LittleDigger_63 Start: 57988, Stop: 58203, Start Num: 18
Candidate Starts for LittleDigger_63:
(Start: 18 @57988 has 13 MA's), (Start: 21 @58000 has 5 MA's), (27, 58090), (30, 58099),

Gene: LittleMinkey_78 Start: 59077, Stop: 59283, Start Num: 17
Candidate Starts for LittleMinkey_78:
(Start: 17 @59077 has 1 MA's), (Start: 21 @59092 has 5 MA's), (24, 59125), (28, 59185),

Gene: Magpie_63 Start: 58922, Stop: 59137, Start Num: 18

Candidate Starts for Magpie_63:

(Start: 18 @58922 has 13 MA's), (Start: 21 @58934 has 5 MA's), (27, 59024), (30, 59033),

Gene: Mudslide_65 Start: 59260, Stop: 59475, Start Num: 18

Candidate Starts for Mudslide_65:

(1, 58735), (2, 58843), (3, 58885), (4, 59053), (9, 59095), (11, 59122), (14, 59176), (Start: 18 @59260 has 13 MA's), (Start: 21 @59272 has 5 MA's), (27, 59362), (30, 59371),

Gene: Nanao_64 Start: 58055, Stop: 58270, Start Num: 18

Candidate Starts for Nanao_64:

(Start: 18 @58055 has 13 MA's), (Start: 21 @58067 has 5 MA's), (27, 58157), (30, 58166),

Gene: Nigel_64 Start: 58087, Stop: 58302, Start Num: 18

Candidate Starts for Nigel_64:

(14, 58003), (Start: 18 @58087 has 13 MA's), (Start: 21 @58099 has 5 MA's), (27, 58189), (30, 58198),

Gene: Poster_63 Start: 58056, Stop: 58271, Start Num: 18

Candidate Starts for Poster_63:

(Start: 18 @58056 has 13 MA's), (Start: 21 @58068 has 5 MA's), (27, 58158), (30, 58167),

Gene: Prince_64 Start: 59161, Stop: 59376, Start Num: 18

Candidate Starts for Prince_64:

(14, 59077), (Start: 18 @59161 has 13 MA's), (Start: 21 @59173 has 5 MA's), (27, 59263), (30, 59272), (34, 59344),

Gene: Renkei_63 Start: 57982, Stop: 58197, Start Num: 18

Candidate Starts for Renkei_63:

(Start: 18 @57982 has 13 MA's), (Start: 21 @57994 has 5 MA's), (27, 58084), (30, 58093),

Gene: Rinkes_66 Start: 58602, Stop: 58799, Start Num: 20

Candidate Starts for Rinkes_66:

(7, 58407), (Start: 19 @58596 has 1 MA's), (Start: 20 @58602 has 1 MA's), (22, 58611), (33, 58770),

Gene: Stinger_65 Start: 58022, Stop: 58210, Start Num: 21

Candidate Starts for Stinger_65:

(14, 57926), (Start: 18 @58010 has 13 MA's), (Start: 21 @58022 has 5 MA's), (27, 58112),

Gene: Waleliano_65 Start: 59062, Stop: 59277, Start Num: 18

Candidate Starts for Waleliano_65:

(1, 58537), (2, 58645), (3, 58687), (4, 58855), (9, 58897), (11, 58924), (14, 58978), (Start: 18 @59062 has 13 MA's), (Start: 21 @59074 has 5 MA's), (27, 59164), (30, 59173),

Gene: Zenteno07_76 Start: 59367, Stop: 59582, Start Num: 21

Candidate Starts for Zenteno07_76:

(Start: 17 @59352 has 1 MA's), (Start: 21 @59367 has 5 MA's), (25, 59403), (28, 59460), (36, 59556),