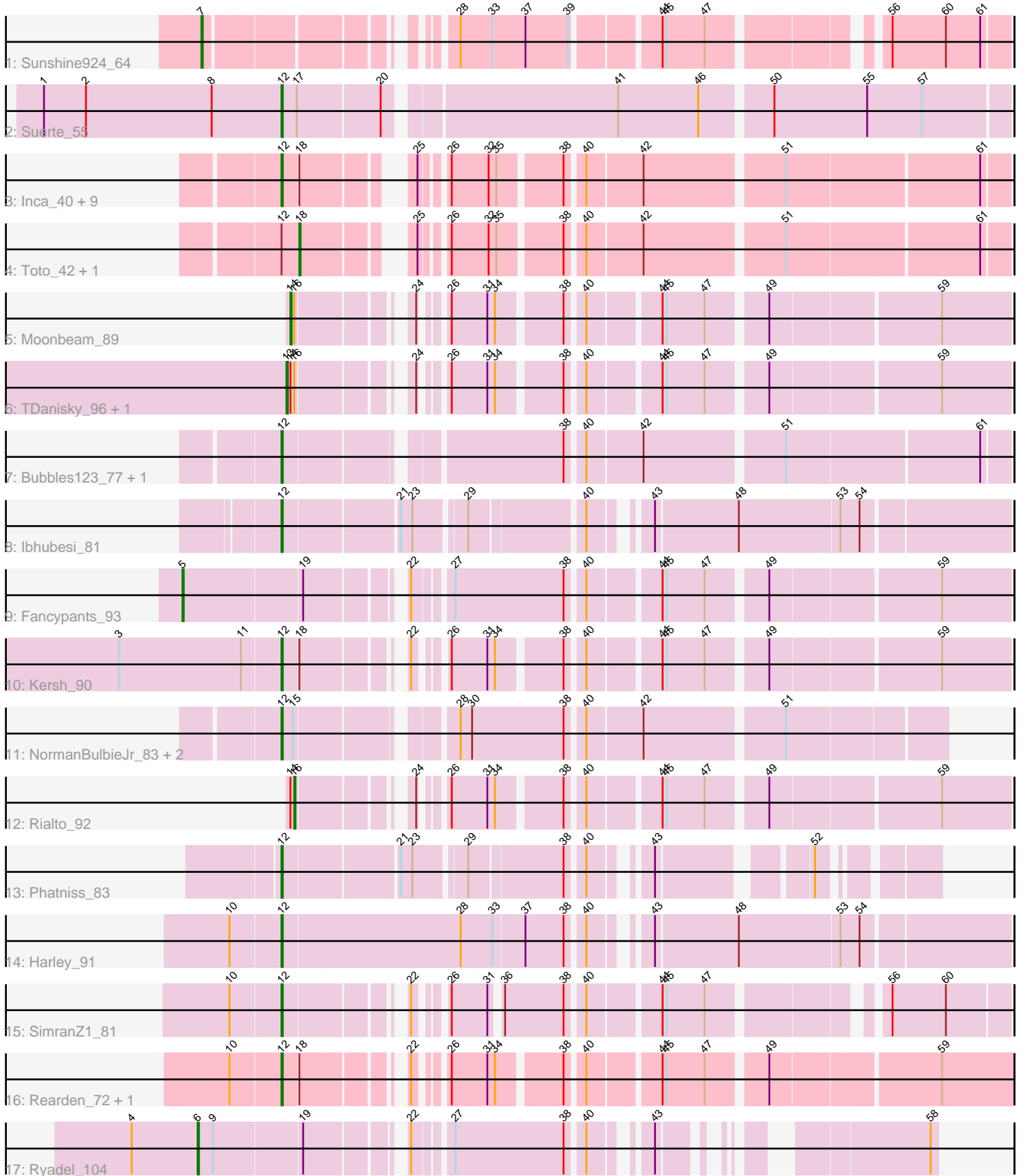


Pham 296791



Note: Tracks are now grouped by subcluster and scaled. Switching in subcluster is indicated by changes in track color. Track scale is now set by default to display the region 30 bp upstream of start 1 to 30 bp downstream of the last possible start. If this default region is judged to be packed too tightly with annotated starts, the track will be further scaled to only show that region of the ORF with annotated starts. This action will be indicated by adding "Zoomed" to the title. For starts, yellow indicates the location of called starts comprised solely of Glimmer/GeneMark auto-annotations, green indicates the location of called starts with at least 1 manual gene annotation.

Pham 296791 Report

This analysis was run 04/25/26 on database version 644.

Pham number 296791 has 32 members, 1 are drafts.

Phages represented in each track:

- Track 1 : Sunshine924_64
- Track 2 : Suerte_55
- Track 3 : Inca_40, ShamWow_43, StellaBean_41, BilboSwaggins_42, ABCat_41, CrystalP_43, Phaja_41, Myrale_43, IHOP_41, Tuco_44
- Track 4 : Toto_42, Marshmallow_42
- Track 5 : Moonbeam_89
- Track 6 : TDanisky_96, Sparkdehlily_95
- Track 7 : Bubbles123_77, Shauna1_82
- Track 8 : Ibhubesi_81
- Track 9 : Fancypants_93
- Track 10 : Kersh_90
- Track 11 : NormanBulbieJr_83, Koella_77, Priscilla_85
- Track 12 : Rialto_92
- Track 13 : Phatniss_83
- Track 14 : Harley_91
- Track 15 : SimranZ1_81
- Track 16 : Rearden_72, Pollywog_88
- Track 17 : Ryadel_104

Summary of Final Annotations (See graph section above for start numbers):

The start number called the most often in the published annotations is 12, it was called in 22 of the 31 non-draft genes in the pham.

Genes that call this "Most Annotated" start:

- ABCat_41, BilboSwaggins_42, Bubbles123_77, CrystalP_43, Harley_91, IHOP_41, Ibhubesi_81, Inca_40, Kersh_90, Koella_77, Myrale_43, NormanBulbieJr_83, Phaja_41, Phatniss_83, Pollywog_88, Priscilla_85, Rearden_72, ShamWow_43, Shauna1_82, SimranZ1_81, StellaBean_41, Suerte_55, Tuco_44,

Genes that have the "Most Annotated" start but do not call it:

- Marshmallow_42, Toto_42,

Genes that do not have the "Most Annotated" start:

- Fancypants_93, Moonbeam_89, Rialto_92, Ryadel_104, Sparkdehlily_95, Sunshine924_64, TDanisky_96,

Summary by start number:

Start 5:

- Found in 1 of 32 (3.1%) of genes in pham
- Manual Annotations of this start: 1 of 31
- Called 100.0% of time when present
- Phage (with cluster) where this start called: Fancypants_93 (F1),

Start 6:

- Found in 1 of 32 (3.1%) of genes in pham
- Manual Annotations of this start: 1 of 31
- Called 100.0% of time when present
- Phage (with cluster) where this start called: Ryadel_104 (O),

Start 7:

- Found in 1 of 32 (3.1%) of genes in pham
- Manual Annotations of this start: 1 of 31
- Called 100.0% of time when present
- Phage (with cluster) where this start called: Sunshine924_64 (A1),

Start 12:

- Found in 25 of 32 (78.1%) of genes in pham
- Manual Annotations of this start: 22 of 31
- Called 92.0% of time when present
- Phage (with cluster) where this start called: ABCat_41 (E), BilboSwaggins_42 (E), Bubbles123_77 (F1), CrystalP_43 (E), Harley_91 (F1), IHOP_41 (E), lbhubesi_81 (F1), Inca_40 (E), Kersh_90 (F1), Koella_77 (F1), Myrale_43 (E), NormanBulbieJr_83 (F1), Phaja_41 (E), Phatniss_83 (F1), Pollywog_88 (F1), Priscilla_85 (F1), Rearden_72 (J), ShamWow_43 (E), Shauna1_82 (F1), SimranZ1_81 (F1), StellaBean_41 (E), Suerte_55 (CZ4), Tuco_44 (E),

Start 13:

- Found in 2 of 32 (6.2%) of genes in pham
- Manual Annotations of this start: 2 of 31
- Called 100.0% of time when present
- Phage (with cluster) where this start called: Sparkdehlily_95 (F1), TDanisky_96 (F1),

Start 14:

- Found in 4 of 32 (12.5%) of genes in pham
- Manual Annotations of this start: 1 of 31
- Called 25.0% of time when present
- Phage (with cluster) where this start called: Moonbeam_89 (F1),

Start 16:

- Found in 4 of 32 (12.5%) of genes in pham
- Manual Annotations of this start: 1 of 31
- Called 25.0% of time when present
- Phage (with cluster) where this start called: Rialto_92 (F1),

Start 18:

- Found in 15 of 32 (46.9%) of genes in pham
- Manual Annotations of this start: 2 of 31
- Called 13.3% of time when present
- Phage (with cluster) where this start called: Marshmallow_42 (E), Toto_42 (E),

Summary by clusters:

There are 6 clusters represented in this pham: F1, E, J, CZ4, A1, O,

Info for manual annotations of cluster A1:

- Start number 7 was manually annotated 1 time for cluster A1.

Info for manual annotations of cluster CZ4:

- Start number 12 was manually annotated 1 time for cluster CZ4.

Info for manual annotations of cluster E:

- Start number 12 was manually annotated 10 times for cluster E.
- Start number 18 was manually annotated 2 times for cluster E.

Info for manual annotations of cluster F1:

- Start number 5 was manually annotated 1 time for cluster F1.
- Start number 12 was manually annotated 11 times for cluster F1.
- Start number 13 was manually annotated 2 times for cluster F1.
- Start number 14 was manually annotated 1 time for cluster F1.
- Start number 16 was manually annotated 1 time for cluster F1.

Info for manual annotations of cluster O:

- Start number 6 was manually annotated 1 time for cluster O.

Gene Information:

Gene: ABCat_41 Start: 35824, Stop: 35336, Start Num: 12

Candidate Starts for ABCat_41:

(Start: 12 @35824 has 22 MA's), (Start: 18 @35812 has 2 MA's), (25, 35749), (26, 35734), (32, 35707), (35, 35701), (38, 35656), (40, 35644), (42, 35602), (51, 35500), (61, 35356),

Gene: BilboSwaggins_42 Start: 35832, Stop: 35344, Start Num: 12

Candidate Starts for BilboSwaggins_42:

(Start: 12 @35832 has 22 MA's), (Start: 18 @35820 has 2 MA's), (25, 35757), (26, 35742), (32, 35715), (35, 35709), (38, 35664), (40, 35652), (42, 35610), (51, 35508), (61, 35364),

Gene: Bubbles123_77 Start: 48885, Stop: 49397, Start Num: 12

Candidate Starts for Bubbles123_77:

(Start: 12 @48885 has 22 MA's), (38, 49077), (40, 49089), (42, 49131), (51, 49233), (61, 49377),

Gene: CrystalP_43 Start: 35832, Stop: 35344, Start Num: 12

Candidate Starts for CrystalP_43:

(Start: 12 @35832 has 22 MA's), (Start: 18 @35820 has 2 MA's), (25, 35757), (26, 35742), (32, 35715), (35, 35709), (38, 35664), (40, 35652), (42, 35610), (51, 35508), (61, 35364),

Gene: Fancypants_93 Start: 52418, Stop: 52996, Start Num: 5

Candidate Starts for Fancypants_93:

(Start: 5 @52418 has 1 MA's), (19, 52508), (22, 52571), (27, 52595), (38, 52679), (40, 52691), (44, 52742), (45, 52745), (47, 52775), (49, 52817), (59, 52943),

Gene: Harley_91 Start: 51213, Stop: 51740, Start Num: 12

Candidate Starts for Harley_91:

(10, 51174), (Start: 12 @51213 has 22 MA's), (28, 51351), (33, 51375), (37, 51399), (38, 51429), (40, 51441), (43, 51474), (48, 51537), (53, 51615), (54, 51630),

Gene: IHOP_41 Start: 35396, Stop: 34908, Start Num: 12

Candidate Starts for IHOP_41:

(Start: 12 @35396 has 22 MA's), (Start: 18 @35384 has 2 MA's), (25, 35321), (26, 35306), (32, 35279), (35, 35273), (38, 35228), (40, 35216), (42, 35174), (51, 35072), (61, 34928),

Gene: lbhubesi_81 Start: 47329, Stop: 47838, Start Num: 12

Candidate Starts for lbhubesi_81:

(Start: 12 @47329 has 22 MA's), (21, 47413), (23, 47422), (29, 47458), (40, 47539), (43, 47572), (48, 47635), (53, 47713), (54, 47728),

Gene: Inca_40 Start: 33921, Stop: 33433, Start Num: 12

Candidate Starts for Inca_40:

(Start: 12 @33921 has 22 MA's), (Start: 18 @33909 has 2 MA's), (25, 33846), (26, 33831), (32, 33804), (35, 33798), (38, 33753), (40, 33741), (42, 33699), (51, 33597), (61, 33453),

Gene: Kersh_90 Start: 52725, Stop: 53210, Start Num: 12

Candidate Starts for Kersh_90:

(3, 52599), (11, 52695), (Start: 12 @52725 has 22 MA's), (Start: 18 @52737 has 2 MA's), (22, 52800), (26, 52815), (31, 52842), (34, 52848), (38, 52893), (40, 52905), (44, 52956), (45, 52959), (47, 52989), (49, 53031), (59, 53157),

Gene: Koella_77 Start: 46451, Stop: 46915, Start Num: 12

Candidate Starts for Koella_77:

(Start: 12 @46451 has 22 MA's), (15, 46460), (28, 46562), (30, 46571), (38, 46643), (40, 46655), (42, 46697), (51, 46799),

Gene: Marshmallow_42 Start: 35818, Stop: 35342, Start Num: 18

Candidate Starts for Marshmallow_42:

(Start: 12 @35830 has 22 MA's), (Start: 18 @35818 has 2 MA's), (25, 35755), (26, 35740), (32, 35713), (35, 35707), (38, 35662), (40, 35650), (42, 35608), (51, 35506), (61, 35362),

Gene: Moonbeam_89 Start: 51150, Stop: 51629, Start Num: 14

Candidate Starts for Moonbeam_89:

(Start: 14 @51150 has 1 MA's), (Start: 16 @51153 has 1 MA's), (24, 51222), (26, 51234), (31, 51261), (34, 51267), (38, 51312), (40, 51324), (44, 51375), (45, 51378), (47, 51408), (49, 51450), (59, 51576),

Gene: Myrale_43 Start: 35695, Stop: 35207, Start Num: 12

Candidate Starts for Myrale_43:

(Start: 12 @35695 has 22 MA's), (Start: 18 @35683 has 2 MA's), (25, 35620), (26, 35605), (32, 35578), (35, 35572), (38, 35527), (40, 35515), (42, 35473), (51, 35371), (61, 35227),

Gene: NormanBulbieJr_83 Start: 50465, Stop: 50929, Start Num: 12

Candidate Starts for NormanBulbieJr_83:

(Start: 12 @50465 has 22 MA's), (15, 50474), (28, 50576), (30, 50585), (38, 50657), (40, 50669), (42, 50711), (51, 50813),

Gene: Phaja_41 Start: 35395, Stop: 34907, Start Num: 12

Candidate Starts for Phaja_41:

(Start: 12 @35395 has 22 MA's), (Start: 18 @35383 has 2 MA's), (25, 35320), (26, 35305), (32, 35278), (35, 35272), (38, 35227), (40, 35215), (42, 35173), (51, 35071), (61, 34927),

Gene: Phatniss_83 Start: 49365, Stop: 49781, Start Num: 12

Candidate Starts for Phatniss_83:

(Start: 12 @49365 has 22 MA's), (21, 49449), (23, 49458), (29, 49494), (38, 49563), (40, 49575), (43, 49608), (52, 49707),

Gene: Pollywog_88 Start: 51599, Stop: 52084, Start Num: 12

Candidate Starts for Pollywog_88:

(10, 51560), (Start: 12 @51599 has 22 MA's), (Start: 18 @51611 has 2 MA's), (22, 51674), (26, 51689), (31, 51716), (34, 51722), (38, 51767), (40, 51779), (44, 51830), (45, 51833), (47, 51863), (49, 51905), (59, 52031),

Gene: Priscilla_85 Start: 50563, Stop: 51027, Start Num: 12

Candidate Starts for Priscilla_85:

(Start: 12 @50563 has 22 MA's), (15, 50572), (28, 50674), (30, 50683), (38, 50755), (40, 50767), (42, 50809), (51, 50911),

Gene: Rearden_72 Start: 47623, Stop: 47135, Start Num: 12

Candidate Starts for Rearden_72:

(10, 47662), (Start: 12 @47623 has 22 MA's), (Start: 18 @47611 has 2 MA's), (22, 47548), (26, 47533), (31, 47506), (34, 47500), (38, 47455), (40, 47443), (44, 47392), (45, 47389), (47, 47359), (49, 47317), (59, 47191),

Gene: Rialto_92 Start: 51249, Stop: 51725, Start Num: 16

Candidate Starts for Rialto_92:

(Start: 14 @51246 has 1 MA's), (Start: 16 @51249 has 1 MA's), (24, 51318), (26, 51330), (31, 51357), (34, 51363), (38, 51408), (40, 51420), (44, 51471), (45, 51474), (47, 51504), (49, 51546), (59, 51672),

Gene: Ryadel_104 Start: 63381, Stop: 62932, Start Num: 6

Candidate Starts for Ryadel_104:

(4, 63432), (Start: 6 @63381 has 1 MA's), (9, 63369), (19, 63303), (22, 63240), (27, 63216), (38, 63132), (40, 63120), (43, 63087), (58, 62937),

Gene: ShamWow_43 Start: 35832, Stop: 35344, Start Num: 12

Candidate Starts for ShamWow_43:

(Start: 12 @35832 has 22 MA's), (Start: 18 @35820 has 2 MA's), (25, 35757), (26, 35742), (32, 35715), (35, 35709), (38, 35664), (40, 35652), (42, 35610), (51, 35508), (61, 35364),

Gene: Shauna1_82 Start: 49932, Stop: 50444, Start Num: 12

Candidate Starts for Shauna1_82:

(Start: 12 @49932 has 22 MA's), (38, 50124), (40, 50136), (42, 50178), (51, 50280), (61, 50424),

Gene: SimranZ1_81 Start: 48125, Stop: 48592, Start Num: 12

Candidate Starts for SimranZ1_81:

(10, 48086), (Start: 12 @48125 has 22 MA's), (22, 48200), (26, 48215), (31, 48242), (36, 48248), (38, 48293), (40, 48305), (44, 48356), (45, 48359), (47, 48389), (56, 48503), (60, 48545),

Gene: Sparkdehlily_95 Start: 49514, Stop: 49996, Start Num: 13

Candidate Starts for Sparkdehlily_95:

(Start: 13 @49514 has 2 MA's), (Start: 14 @49517 has 1 MA's), (Start: 16 @49520 has 1 MA's), (24, 49589), (26, 49601), (31, 49628), (34, 49634), (38, 49679), (40, 49691), (44, 49742), (45, 49745), (47, 49775), (49, 49817), (59, 49943),

Gene: StellaBean_41 Start: 35156, Stop: 34668, Start Num: 12

Candidate Starts for StellaBean_41:

(Start: 12 @35156 has 22 MA's), (Start: 18 @35144 has 2 MA's), (25, 35081), (26, 35066), (32, 35039), (35, 35033), (38, 34988), (40, 34976), (42, 34934), (51, 34832), (61, 34688),

Gene: Suerte_55 Start: 39354, Stop: 39890, Start Num: 12

Candidate Starts for Suerte_55:

(1, 39168), (2, 39201), (8, 39300), (Start: 12 @39354 has 22 MA's), (17, 39366), (20, 39429), (41, 39597), (46, 39660), (50, 39711), (55, 39783), (57, 39825),

Gene: Sunshine924_64 Start: 40630, Stop: 40100, Start Num: 7

Candidate Starts for Sunshine924_64:

(Start: 7 @40630 has 1 MA's), (28, 40477), (33, 40453), (37, 40429), (39, 40396), (44, 40336), (45, 40333), (47, 40303), (56, 40189), (60, 40147), (61, 40120),

Gene: TDanisky_96 Start: 49514, Stop: 49996, Start Num: 13

Candidate Starts for TDanisky_96:

(Start: 13 @49514 has 2 MA's), (Start: 14 @49517 has 1 MA's), (Start: 16 @49520 has 1 MA's), (24, 49589), (26, 49601), (31, 49628), (34, 49634), (38, 49679), (40, 49691), (44, 49742), (45, 49745), (47, 49775), (49, 49817), (59, 49943),

Gene: Toto_42 Start: 35820, Stop: 35344, Start Num: 18

Candidate Starts for Toto_42:

(Start: 12 @35832 has 22 MA's), (Start: 18 @35820 has 2 MA's), (25, 35757), (26, 35742), (32, 35715), (35, 35709), (38, 35664), (40, 35652), (42, 35610), (51, 35508), (61, 35364),

Gene: Tuco_44 Start: 36340, Stop: 35852, Start Num: 12

Candidate Starts for Tuco_44:

(Start: 12 @36340 has 22 MA's), (Start: 18 @36328 has 2 MA's), (25, 36265), (26, 36250), (32, 36223), (35, 36217), (38, 36172), (40, 36160), (42, 36118), (51, 36016), (61, 35872),