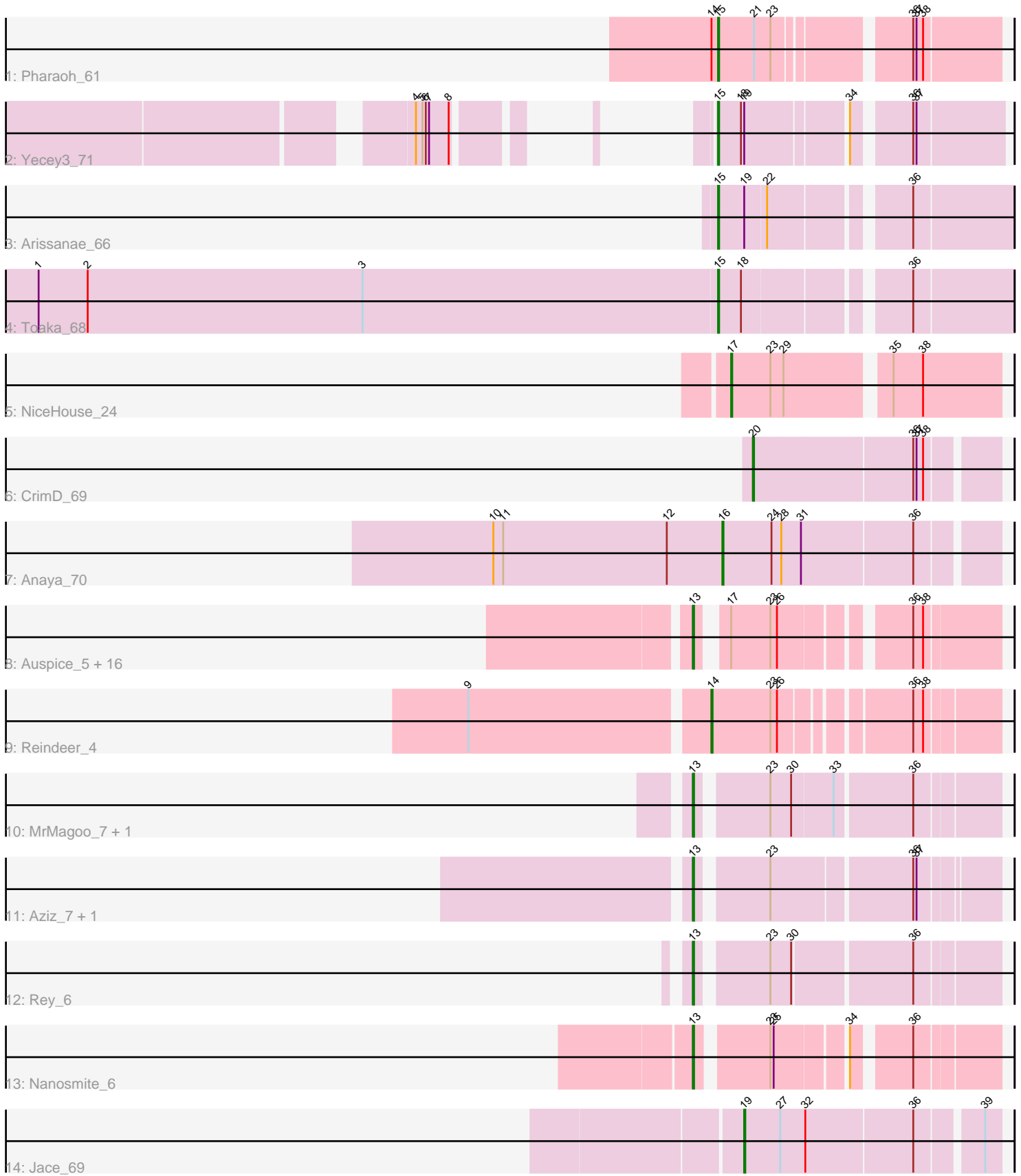


Pham 296793



Note: Tracks are now grouped by subcluster and scaled. Switching in subcluster is indicated by changes in track color. Track scale is now set by default to display the region 30 bp upstream of start 1 to 30 bp downstream of the last possible start. If this default region is judged to be packed too tightly with annotated starts, the track will be further scaled to only show that region of the ORF with annotated starts. This action will be indicated by adding "Zoomed" to the title. For starts, yellow indicates the location of called starts comprised solely of Glimmer/GeneMark auto-annotations, green indicates the location of called starts with at least 1 manual gene annotation.

Pham 296793 Report

This analysis was run 04/25/26 on database version 644.

Pham number 296793 has 32 members, 3 are drafts.

Phages represented in each track:

- Track 1 : Pharaoh_61
- Track 2 : Yecey3_71
- Track 3 : Arissanae_66
- Track 4 : Toaka_68
- Track 5 : NiceHouse_24
- Track 6 : CrimD_69
- Track 7 : Anaya_70
- Track 8 : Auspice_5, FreakyGoo_6, Diminimus_6, TyDawg_5, Dulcita_6, PegLeg_5, Bongo_5, RoseMarie_5, Izel_6, KleverKiS_5, LilhomieP_5, Glaske16_6, SlimJimmy_5, Bricole_5, TpudiCK_6, Skinny_6, IPhane7_5
- Track 9 : Reindeer_4
- Track 10 : MrMagoo_7, GardenSalsa_7
- Track 11 : Aziz_7, GenevaB15_7
- Track 12 : Rey_6
- Track 13 : Nanosmite_6
- Track 14 : Jace_69

Summary of Final Annotations (See graph section above for start numbers):

The start number called the most often in the published annotations is 13, it was called in 20 of the 29 non-draft genes in the pham.

Genes that call this "Most Annotated" start:

- Auspice_5, Aziz_7, Bongo_5, Bricole_5, Diminimus_6, Dulcita_6, FreakyGoo_6, GardenSalsa_7, GenevaB15_7, Glaske16_6, IPhane7_5, Izel_6, KleverKiS_5, LilhomieP_5, MrMagoo_7, Nanosmite_6, PegLeg_5, Rey_6, RoseMarie_5, Skinny_6, SlimJimmy_5, TpudiCK_6, TyDawg_5,

Genes that have the "Most Annotated" start but do not call it:

-

Genes that do not have the "Most Annotated" start:

- Anaya_70, Arissanae_66, CrimD_69, Jace_69, NiceHouse_24, Pharaoh_61, Reindeer_4, Toaka_68, Yecey3_71,

Summary by start number:

Start 13:

- Found in 23 of 32 (71.9%) of genes in pham
- Manual Annotations of this start: 20 of 29
- Called 100.0% of time when present
- Phage (with cluster) where this start called: Auspice_5 (M1), Aziz_7 (M2), Bongo_5 (M1), Bricole_5 (M1), Diminimus_6 (M1), Dulcita_6 (M1), FreakyGoo_6 (M1), GardenSalsa_7 (M2), GenevaB15_7 (M2), Glaske16_6 (M1), IPhone7_5 (M1), Izel_6 (M1), KleverKiS_5 (M1), LilhomieP_5 (M1), MrMagoo_7 (M2), Nanosmite_6 (M3), PegLeg_5 (M1), Rey_6 (M2), RoseMarie_5 (M1), Skinny_6 (M1), SlimJimmy_5 (M1), TpudiCK_6 (M1), TyDawg_5 (M1),

Start 14:

- Found in 2 of 32 (6.2%) of genes in pham
- Manual Annotations of this start: 1 of 29
- Called 50.0% of time when present
- Phage (with cluster) where this start called: Reindeer_4 (M1),

Start 15:

- Found in 4 of 32 (12.5%) of genes in pham
- Manual Annotations of this start: 4 of 29
- Called 100.0% of time when present
- Phage (with cluster) where this start called: Arissanae_66 (A9), Pharaoh_61 (A12), Toaka_68 (A9), Yecy3_71 (A9),

Start 16:

- Found in 1 of 32 (3.1%) of genes in pham
- Manual Annotations of this start: 1 of 29
- Called 100.0% of time when present
- Phage (with cluster) where this start called: Anaya_70 (K1),

Start 17:

- Found in 18 of 32 (56.2%) of genes in pham
- Manual Annotations of this start: 1 of 29
- Called 5.6% of time when present
- Phage (with cluster) where this start called: NiceHouse_24 (CE),

Start 19:

- Found in 3 of 32 (9.4%) of genes in pham
- Manual Annotations of this start: 1 of 29
- Called 33.3% of time when present
- Phage (with cluster) where this start called: Jace_69 (singleton),

Start 20:

- Found in 1 of 32 (3.1%) of genes in pham
- Manual Annotations of this start: 1 of 29
- Called 100.0% of time when present
- Phage (with cluster) where this start called: CrimD_69 (K1),

Summary by clusters:

There are 8 clusters represented in this pham: singleton, A12, CE, K1, M1, M3, M2, A9,

Info for manual annotations of cluster A12:

- Start number 15 was manually annotated 1 time for cluster A12.

Info for manual annotations of cluster A9:

- Start number 15 was manually annotated 3 times for cluster A9.

Info for manual annotations of cluster CE:

- Start number 17 was manually annotated 1 time for cluster CE.

Info for manual annotations of cluster K1:

- Start number 16 was manually annotated 1 time for cluster K1.
- Start number 20 was manually annotated 1 time for cluster K1.

Info for manual annotations of cluster M1:

- Start number 13 was manually annotated 14 times for cluster M1.
- Start number 14 was manually annotated 1 time for cluster M1.

Info for manual annotations of cluster M2:

- Start number 13 was manually annotated 5 times for cluster M2.

Info for manual annotations of cluster M3:

- Start number 13 was manually annotated 1 time for cluster M3.

Gene Information:

Gene: Anaya_70 Start: 44697, Stop: 44936, Start Num: 16

Candidate Starts for Anaya_70:

(10, 44487), (11, 44496), (12, 44646), (Start: 16 @44697 has 1 MA's), (24, 44742), (28, 44751), (31, 44769), (36, 44868),

Gene: Arissanae_66 Start: 41220, Stop: 40978, Start Num: 15

Candidate Starts for Arissanae_66:

(Start: 15 @41220 has 4 MA's), (Start: 19 @41196 has 1 MA's), (22, 41178), (36, 41067),

Gene: Auspice_5 Start: 2366, Stop: 2133, Start Num: 13

Candidate Starts for Auspice_5:

(Start: 13 @2366 has 20 MA's), (Start: 17 @2348 has 1 MA's), (23, 2312), (26, 2306), (36, 2207), (38, 2198),

Gene: Aziz_7 Start: 2636, Stop: 2391, Start Num: 13

Candidate Starts for Aziz_7:

(Start: 13 @2636 has 20 MA's), (23, 2579), (36, 2459), (37, 2456),

Gene: Bongo_5 Start: 2366, Stop: 2133, Start Num: 13

Candidate Starts for Bongo_5:

(Start: 13 @2366 has 20 MA's), (Start: 17 @2348 has 1 MA's), (23, 2312), (26, 2306), (36, 2207), (38, 2198),

Gene: Bricole_5 Start: 2365, Stop: 2132, Start Num: 13
Candidate Starts for Bricole_5:
(Start: 13 @2365 has 20 MA's), (Start: 17 @2347 has 1 MA's), (23, 2311), (26, 2305), (36, 2206), (38, 2197),

Gene: CrimD_69 Start: 44683, Stop: 44892, Start Num: 20
Candidate Starts for CrimD_69:
(Start: 20 @44683 has 1 MA's), (36, 44824), (37, 44827), (38, 44833),

Gene: Diminimus_6 Start: 2365, Stop: 2132, Start Num: 13
Candidate Starts for Diminimus_6:
(Start: 13 @2365 has 20 MA's), (Start: 17 @2347 has 1 MA's), (23, 2311), (26, 2305), (36, 2206), (38, 2197),

Gene: Dulcita_6 Start: 2365, Stop: 2132, Start Num: 13
Candidate Starts for Dulcita_6:
(Start: 13 @2365 has 20 MA's), (Start: 17 @2347 has 1 MA's), (23, 2311), (26, 2305), (36, 2206), (38, 2197),

Gene: FreakyGoo_6 Start: 2366, Stop: 2133, Start Num: 13
Candidate Starts for FreakyGoo_6:
(Start: 13 @2366 has 20 MA's), (Start: 17 @2348 has 1 MA's), (23, 2312), (26, 2306), (36, 2207), (38, 2198),

Gene: GardenSalsa_7 Start: 2660, Stop: 2412, Start Num: 13
Candidate Starts for GardenSalsa_7:
(Start: 13 @2660 has 20 MA's), (23, 2603), (30, 2585), (33, 2549), (36, 2483),

Gene: GenevaB15_7 Start: 2636, Stop: 2391, Start Num: 13
Candidate Starts for GenevaB15_7:
(Start: 13 @2636 has 20 MA's), (23, 2579), (36, 2459), (37, 2456),

Gene: Glaske16_6 Start: 2365, Stop: 2132, Start Num: 13
Candidate Starts for Glaske16_6:
(Start: 13 @2365 has 20 MA's), (Start: 17 @2347 has 1 MA's), (23, 2311), (26, 2305), (36, 2206), (38, 2197),

Gene: IPHane7_5 Start: 2366, Stop: 2133, Start Num: 13
Candidate Starts for IPHane7_5:
(Start: 13 @2366 has 20 MA's), (Start: 17 @2348 has 1 MA's), (23, 2312), (26, 2306), (36, 2207), (38, 2198),

Gene: Izel_6 Start: 2365, Stop: 2132, Start Num: 13
Candidate Starts for Izel_6:
(Start: 13 @2365 has 20 MA's), (Start: 17 @2347 has 1 MA's), (23, 2311), (26, 2305), (36, 2206), (38, 2197),

Gene: Jace_69 Start: 40976, Stop: 41194, Start Num: 19
Candidate Starts for Jace_69:
(Start: 19 @40976 has 1 MA's), (27, 41009), (32, 41030), (36, 41126), (39, 41180),

Gene: KleverKiS_5 Start: 2362, Stop: 2132, Start Num: 13
Candidate Starts for KleverKiS_5:

(Start: 13 @2362 has 20 MA's), (Start: 17 @2344 has 1 MA's), (23, 2308), (26, 2302), (36, 2203), (38, 2194),

Gene: LilhomieP_5 Start: 2366, Stop: 2133, Start Num: 13

Candidate Starts for LilhomieP_5:

(Start: 13 @2366 has 20 MA's), (Start: 17 @2348 has 1 MA's), (23, 2312), (26, 2306), (36, 2207), (38, 2198),

Gene: MrMagoo_7 Start: 2660, Stop: 2412, Start Num: 13

Candidate Starts for MrMagoo_7:

(Start: 13 @2660 has 20 MA's), (23, 2603), (30, 2585), (33, 2549), (36, 2483),

Gene: Nanosmite_6 Start: 2681, Stop: 2448, Start Num: 13

Candidate Starts for Nanosmite_6:

(Start: 13 @2681 has 20 MA's), (23, 2624), (25, 2621), (34, 2564), (36, 2519),

Gene: NiceHouse_24 Start: 11340, Stop: 11110, Start Num: 17

Candidate Starts for NiceHouse_24:

(Start: 17 @11340 has 1 MA's), (23, 11304), (29, 11292), (35, 11208), (38, 11181),

Gene: PegLeg_5 Start: 2365, Stop: 2132, Start Num: 13

Candidate Starts for PegLeg_5:

(Start: 13 @2365 has 20 MA's), (Start: 17 @2347 has 1 MA's), (23, 2311), (26, 2305), (36, 2206), (38, 2197),

Gene: Pharaoh_61 Start: 40405, Stop: 40172, Start Num: 15

Candidate Starts for Pharaoh_61:

(Start: 14 @40411 has 1 MA's), (Start: 15 @40405 has 4 MA's), (21, 40372), (23, 40357), (36, 40249), (37, 40246), (38, 40240),

Gene: Reindeer_4 Start: 2200, Stop: 1967, Start Num: 14

Candidate Starts for Reindeer_4:

(9, 2410), (Start: 14 @2200 has 1 MA's), (23, 2146), (26, 2140), (36, 2038), (38, 2029),

Gene: Rey_6 Start: 2648, Stop: 2400, Start Num: 13

Candidate Starts for Rey_6:

(Start: 13 @2648 has 20 MA's), (23, 2591), (30, 2573), (36, 2471),

Gene: RoseMarie_5 Start: 2362, Stop: 2132, Start Num: 13

Candidate Starts for RoseMarie_5:

(Start: 13 @2362 has 20 MA's), (Start: 17 @2344 has 1 MA's), (23, 2308), (26, 2302), (36, 2203), (38, 2194),

Gene: Skinny_6 Start: 2365, Stop: 2132, Start Num: 13

Candidate Starts for Skinny_6:

(Start: 13 @2365 has 20 MA's), (Start: 17 @2347 has 1 MA's), (23, 2311), (26, 2305), (36, 2206), (38, 2197),

Gene: SlimJimmy_5 Start: 2365, Stop: 2132, Start Num: 13

Candidate Starts for SlimJimmy_5:

(Start: 13 @2365 has 20 MA's), (Start: 17 @2347 has 1 MA's), (23, 2311), (26, 2305), (36, 2206), (38, 2197),

Gene: Toaka_68 Start: 40924, Stop: 40682, Start Num: 15

Candidate Starts for Toaka_68:

(1, 41545), (2, 41500), (3, 41248), (Start: 15 @40924 has 4 MA's), (18, 40903), (36, 40771),

Gene: TpudiCK_6 Start: 2365, Stop: 2132, Start Num: 13

Candidate Starts for TpudiCK_6:

(Start: 13 @2365 has 20 MA's), (Start: 17 @2347 has 1 MA's), (23, 2311), (26, 2305), (36, 2206), (38, 2197),

Gene: TyDawg_5 Start: 2366, Stop: 2133, Start Num: 13

Candidate Starts for TyDawg_5:

(Start: 13 @2366 has 20 MA's), (Start: 17 @2348 has 1 MA's), (23, 2312), (26, 2306), (36, 2207), (38, 2198),

Gene: Yecey3_71 Start: 41130, Stop: 40897, Start Num: 15

Candidate Starts for Yecey3_71:

(4, 41235), (5, 41229), (6, 41226), (7, 41223), (8, 41205), (Start: 15 @41130 has 4 MA's), (18, 41109), (Start: 19 @41106 has 1 MA's), (34, 41022), (36, 40977), (37, 40974),