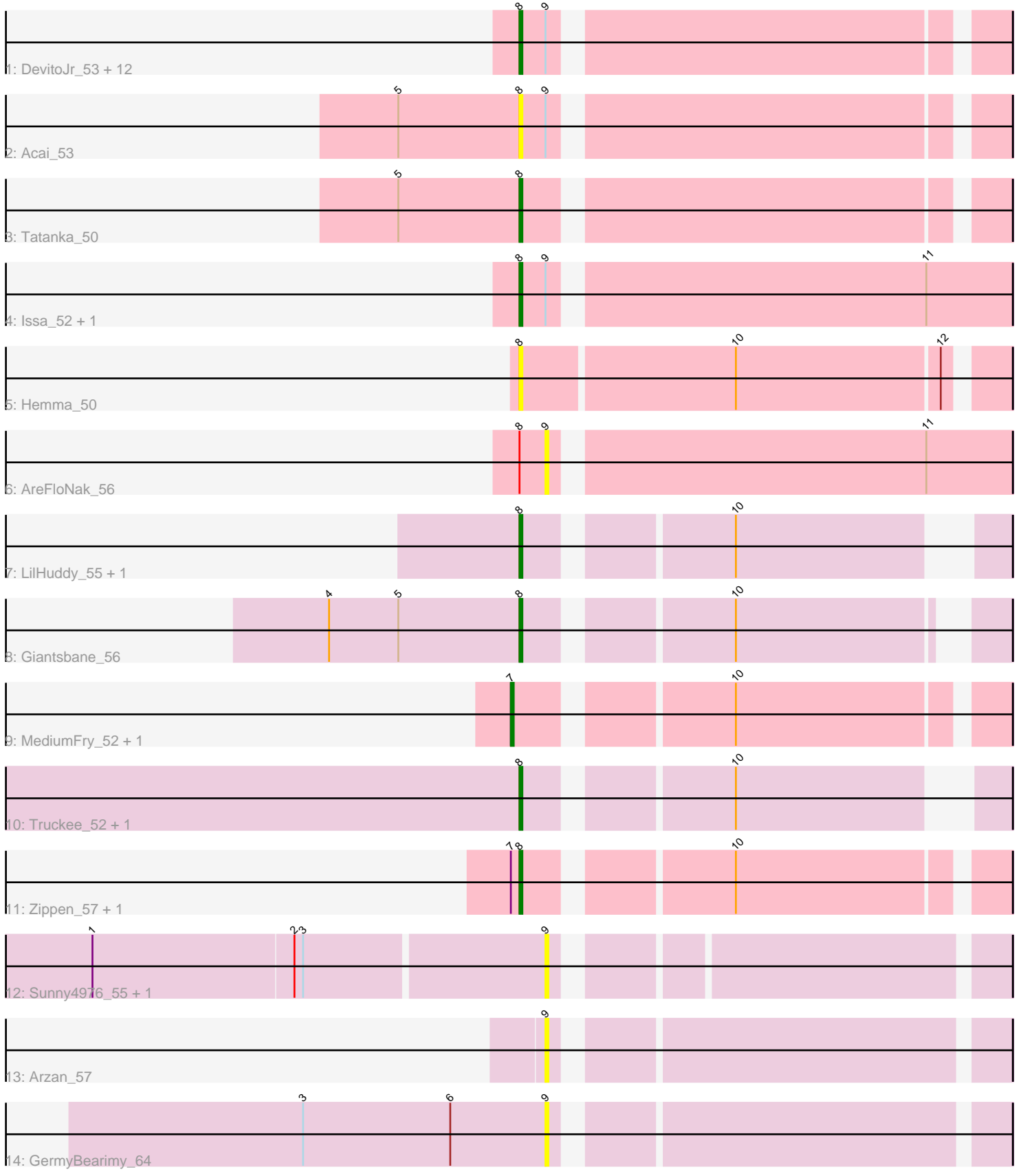


Pham 296795



Note: Tracks are now grouped by subcluster and scaled. Switching in subcluster is indicated by changes in track color. Track scale is now set by default to display the region 30 bp upstream of start 1 to 30 bp downstream of the last possible start. If this default region is judged to be packed too tightly with annotated starts, the track will be further scaled to only show that region of the ORF with annotated starts. This action will be indicated by adding "Zoomed" to the title. For starts, yellow indicates the location of called starts comprised solely of Glimmer/GeneMark auto-annotations, green indicates the location of called starts with at least 1 manual gene annotation.

Pham 296795 Report

This analysis was run 04/25/26 on database version 644.

Pham number 296795 has 32 members, 10 are drafts.

Phages represented in each track:

- Track 1 : DevitoJr_53, Trustiboi_53, Nightmare_55, Synepsis_52, Dinallo_52, Niktson_53, ScienceWizSam_54, Westerlin_52, ElephantMan_53, Brunswick_54, CastorTray_56, Tenno_54, Darby_52
- Track 2 : Acai_53
- Track 3 : Tatanka_50
- Track 4 : Issa_52, Nivinsha_55
- Track 5 : Hemma_50
- Track 6 : AreFloNak_56
- Track 7 : LilHuddy_55, Shepard_56
- Track 8 : Giantsbane_56
- Track 9 : MediumFry_52, Caterpillar_51
- Track 10 : Truckee_52, Makai_54
- Track 11 : Zippen_57, Inked_58
- Track 12 : Sunny4976_55, Jazzy4900_56
- Track 13 : Arzan_57
- Track 14 : GermyBearimy_64

Summary of Final Annotations (See graph section above for start numbers):

The start number called the most often in the published annotations is 8, it was called in 20 of the 22 non-draft genes in the pham.

Genes that call this "Most Annotated" start:

- Acai_53, Brunswick_54, CastorTray_56, Darby_52, DevitoJr_53, Dinallo_52, ElephantMan_53, Giantsbane_56, Hemma_50, Inked_58, Issa_52, LilHuddy_55, Makai_54, Nightmare_55, Niktson_53, Nivinsha_55, ScienceWizSam_54, Shepard_56, Synepsis_52, Tatanka_50, Tenno_54, Truckee_52, Trustiboi_53, Westerlin_52, Zippen_57,

Genes that have the "Most Annotated" start but do not call it:

- AreFloNak_56,

Genes that do not have the "Most Annotated" start:

- Arzan_57, Caterpillar_51, GermyBearimy_64, Jazzy4900_56, MediumFry_52, Sunny4976_55,

Summary by start number:

Start 7:

- Found in 4 of 32 (12.5%) of genes in pham
- Manual Annotations of this start: 2 of 22
- Called 50.0% of time when present
- Phage (with cluster) where this start called: Caterpillar_51 (AU4), MediumFry_52 (AU4),

Start 8:

- Found in 26 of 32 (81.2%) of genes in pham
- Manual Annotations of this start: 20 of 22
- Called 96.2% of time when present
- Phage (with cluster) where this start called: Acai_53 (AU1), Brunswick_54 (AU1), CastorTray_56 (AU1), Darby_52 (AU1), DevitoJr_53 (AU1), Dinallo_52 (AU1), ElephantMan_53 (AU1), Giantsbane_56 (AU2), Hemma_50 (AU1), Inked_58 (AU7), Issa_52 (AU1), LilHuddy_55 (AU2), Makai_54 (AU5), Nightmare_55 (AU1), Niktson_53 (AU1), Nivinsha_55 (AU1), ScienceWizSam_54 (AU1), Shepard_56 (AU2), Synopsis_52 (AU1), Tatanka_50 (AU1), Tenno_54 (AU1), Truckee_52 (AU5), Trustiboi_53 (AU1), Westerlin_52 (AU1), Zippen_57 (AU7),

Start 9:

- Found in 21 of 32 (65.6%) of genes in pham
- No Manual Annotations of this start.
- Called 23.8% of time when present
- Phage (with cluster) where this start called: AreFloNak_56 (AU1), Arzan_57 (FI), GermyBearimy_64 (FI), Jazzy4900_56 (FI), Sunny4976_55 (FI),

Summary by clusters:

There are 6 clusters represented in this pham: AU1, AU2, AU5, AU4, AU7, FI,

Info for manual annotations of cluster AU1:

- Start number 8 was manually annotated 13 times for cluster AU1.

Info for manual annotations of cluster AU2:

- Start number 8 was manually annotated 3 times for cluster AU2.

Info for manual annotations of cluster AU4:

- Start number 7 was manually annotated 2 times for cluster AU4.

Info for manual annotations of cluster AU5:

- Start number 8 was manually annotated 2 times for cluster AU5.

Info for manual annotations of cluster AU7:

- Start number 8 was manually annotated 2 times for cluster AU7.

Gene Information:

Gene: Acai_53 Start: 37148, Stop: 37300, Start Num: 8

Candidate Starts for Acai_53:

(5, 37106), (Start: 8 @37148 has 20 MA's), (9, 37157),

Gene: AreFloNak_56 Start: 37115, Stop: 37267, Start Num: 9

Candidate Starts for AreFloNak_56:

(Start: 8 @37106 has 20 MA's), (9, 37115), (11, 37238),

Gene: Arzan_57 Start: 36656, Stop: 36799, Start Num: 9

Candidate Starts for Arzan_57:

(9, 36656),

Gene: Brunswick_54 Start: 36988, Stop: 37140, Start Num: 8

Candidate Starts for Brunswick_54:

(Start: 8 @36988 has 20 MA's), (9, 36997),

Gene: CastorTray_56 Start: 37761, Stop: 37913, Start Num: 8

Candidate Starts for CastorTray_56:

(Start: 8 @37761 has 20 MA's), (9, 37770),

Gene: Caterpillar_51 Start: 36250, Stop: 36402, Start Num: 7

Candidate Starts for Caterpillar_51:

(Start: 7 @36250 has 2 MA's), (10, 36316),

Gene: Darby_52 Start: 36935, Stop: 37087, Start Num: 8

Candidate Starts for Darby_52:

(Start: 8 @36935 has 20 MA's), (9, 36944),

Gene: DevitoJr_53 Start: 37327, Stop: 37479, Start Num: 8

Candidate Starts for DevitoJr_53:

(Start: 8 @37327 has 20 MA's), (9, 37336),

Gene: Dinallo_52 Start: 38199, Stop: 38351, Start Num: 8

Candidate Starts for Dinallo_52:

(Start: 8 @38199 has 20 MA's), (9, 38208),

Gene: ElephantMan_53 Start: 37611, Stop: 37763, Start Num: 8

Candidate Starts for ElephantMan_53:

(Start: 8 @37611 has 20 MA's), (9, 37620),

Gene: GermyBearimy_64 Start: 38020, Stop: 38163, Start Num: 9

Candidate Starts for GermyBearimy_64:

(3, 37936), (6, 37987), (9, 38020),

Gene: Giantsbane_56 Start: 36218, Stop: 36361, Start Num: 8

Candidate Starts for Giantsbane_56:

(4, 36152), (5, 36176), (Start: 8 @36218 has 20 MA's), (10, 36281),

Gene: Hemma_50 Start: 34050, Stop: 34208, Start Num: 8

Candidate Starts for Hemma_50:

(Start: 8 @34050 has 20 MA's), (10, 34122), (12, 34191),

Gene: Inked_58 Start: 38160, Stop: 38309, Start Num: 8
Candidate Starts for Inked_58:
(Start: 7 @38157 has 2 MA's), (Start: 8 @38160 has 20 MA's), (10, 38223),

Gene: Issa_52 Start: 36978, Stop: 37139, Start Num: 8
Candidate Starts for Issa_52:
(Start: 8 @36978 has 20 MA's), (9, 36987), (11, 37110),

Gene: Jazzy4900_56 Start: 37435, Stop: 37575, Start Num: 9
Candidate Starts for Jazzy4900_56:
(1, 37282), (2, 37351), (3, 37354), (9, 37435),

Gene: LilHuddy_55 Start: 37156, Stop: 37296, Start Num: 8
Candidate Starts for LilHuddy_55:
(Start: 8 @37156 has 20 MA's), (10, 37219),

Gene: Makai_54 Start: 37254, Stop: 37394, Start Num: 8
Candidate Starts for Makai_54:
(Start: 8 @37254 has 20 MA's), (10, 37317),

Gene: MediumFry_52 Start: 36539, Stop: 36691, Start Num: 7
Candidate Starts for MediumFry_52:
(Start: 7 @36539 has 2 MA's), (10, 36605),

Gene: Nightmare_55 Start: 38169, Stop: 38321, Start Num: 8
Candidate Starts for Nightmare_55:
(Start: 8 @38169 has 20 MA's), (9, 38178),

Gene: Niktson_53 Start: 37611, Stop: 37763, Start Num: 8
Candidate Starts for Niktson_53:
(Start: 8 @37611 has 20 MA's), (9, 37620),

Gene: Nivinsha_55 Start: 37106, Stop: 37267, Start Num: 8
Candidate Starts for Nivinsha_55:
(Start: 8 @37106 has 20 MA's), (9, 37115), (11, 37238),

Gene: ScienceWizSam_54 Start: 37214, Stop: 37375, Start Num: 8
Candidate Starts for ScienceWizSam_54:
(Start: 8 @37214 has 20 MA's), (9, 37223),

Gene: Shepard_56 Start: 36997, Stop: 37137, Start Num: 8
Candidate Starts for Shepard_56:
(Start: 8 @36997 has 20 MA's), (10, 37060),

Gene: Sunny4976_55 Start: 37435, Stop: 37575, Start Num: 9
Candidate Starts for Sunny4976_55:
(1, 37282), (2, 37351), (3, 37354), (9, 37435),

Gene: Synopsis_52 Start: 37282, Stop: 37434, Start Num: 8
Candidate Starts for Synopsis_52:
(Start: 8 @37282 has 20 MA's), (9, 37291),

Gene: Tatanka_50 Start: 37414, Stop: 37566, Start Num: 8
Candidate Starts for Tatanka_50:
(5, 37372), (Start: 8 @37414 has 20 MA's),

Gene: Tenno_54 Start: 37945, Stop: 38097, Start Num: 8
Candidate Starts for Tenno_54:
(Start: 8 @37945 has 20 MA's), (9, 37954),

Gene: Truckee_52 Start: 37044, Stop: 37184, Start Num: 8
Candidate Starts for Truckee_52:
(Start: 8 @37044 has 20 MA's), (10, 37107),

Gene: Trustiboi_53 Start: 37483, Stop: 37635, Start Num: 8
Candidate Starts for Trustiboi_53:
(Start: 8 @37483 has 20 MA's), (9, 37492),

Gene: Westerlin_52 Start: 38496, Stop: 38648, Start Num: 8
Candidate Starts for Westerlin_52:
(Start: 8 @38496 has 20 MA's), (9, 38505),

Gene: Zippen_57 Start: 37860, Stop: 38009, Start Num: 8
Candidate Starts for Zippen_57:
(Start: 7 @37857 has 2 MA's), (Start: 8 @37860 has 20 MA's), (10, 37923),