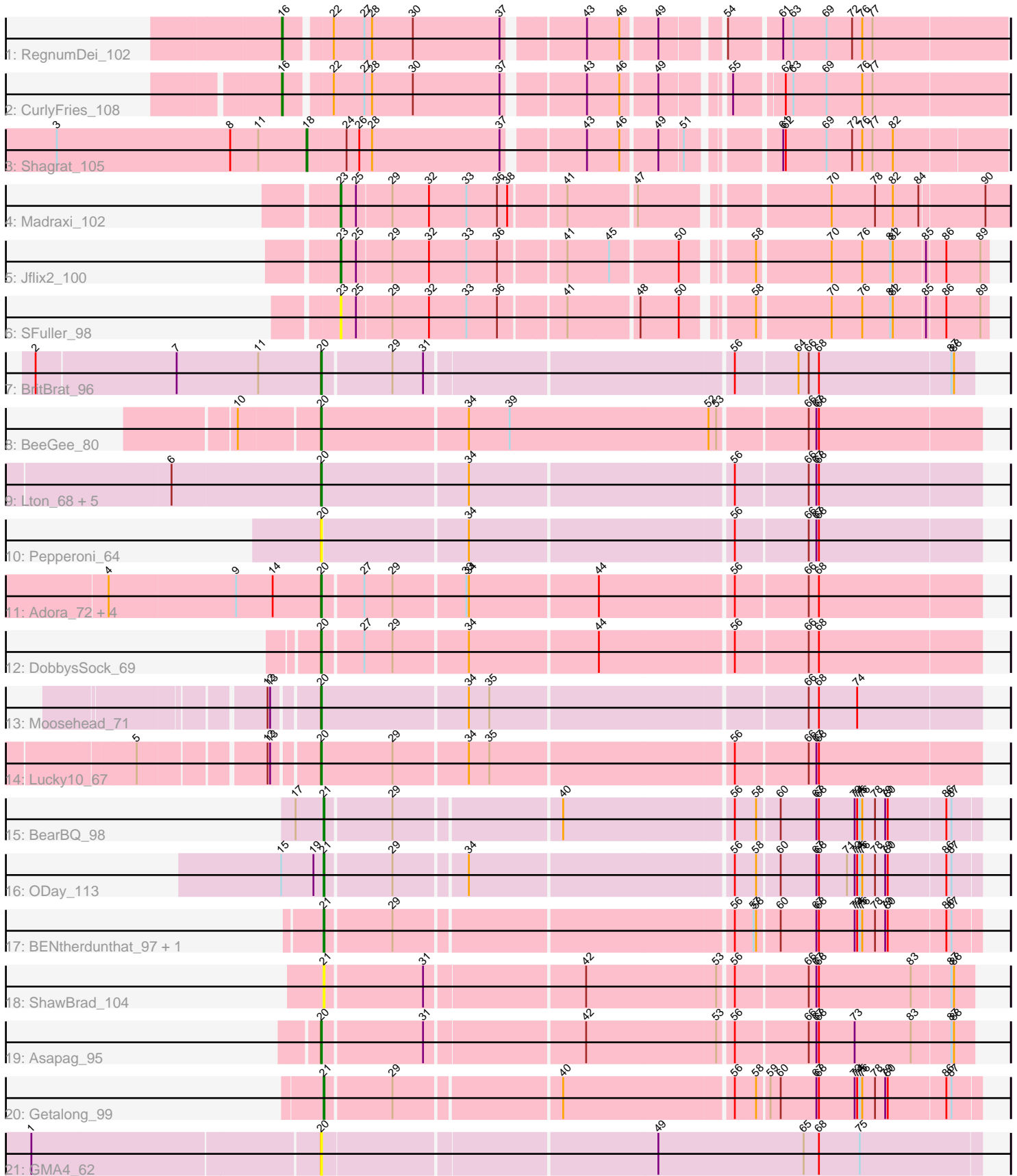


Pham 296799



Note: Tracks are now grouped by subcluster and scaled. Switching in subcluster is indicated by changes in track color. Track scale is now set by default to display the region 30 bp upstream of start 1 to 30 bp downstream of the last possible start. If this default region is judged to be packed too tightly with annotated starts, the track will be further scaled to only show that region of the ORF with annotated starts. This action will be indicated by adding "Zoomed" to the title. For starts, yellow indicates the location of called starts comprised solely of Glimmer/GeneMark auto-annotations, green indicates the location of called starts with at least 1 manual gene annotation.

Pham 296799 Report

This analysis was run 04/25/26 on database version 644.

Pham number 296799 has 31 members, 5 are drafts.

Phages represented in each track:

- Track 1 : RegnumDei_102
- Track 2 : CurlyFries_108
- Track 3 : Shagrat_105
- Track 4 : Madraxi_102
- Track 5 : Jflix2_100
- Track 6 : SFuller_98
- Track 7 : BritBrat_96
- Track 8 : BeeGee_80
- Track 9 : Lton_68, Kuwabara_89, InLimbo_68, OneDirection_65, PhorbesPhlower_69, Morkie_71
- Track 10 : Pepperoni_64
- Track 11 : Adora_72, Hortense_75, Howe_75, Shlim410_73, Twinkle_74
- Track 12 : DobbysSock_69
- Track 13 : Moosehead_71
- Track 14 : Lucky10_67
- Track 15 : BearBQ_98
- Track 16 : ODay_113
- Track 17 : BENtherdunthat_97, CheeseTouch_105
- Track 18 : ShawBrad_104
- Track 19 : Asapag_95
- Track 20 : Getalong_99
- Track 21 : GMA4_62

Summary of Final Annotations (See graph section above for start numbers):

The start number called the most often in the published annotations is 20, it was called in 16 of the 26 non-draft genes in the pham.

Genes that call this "Most Annotated" start:

- Adora_72, Asapag_95, BeeGee_80, BritBrat_96, DobbysSock_69, GMA4_62, Hortense_75, Howe_75, InLimbo_68, Kuwabara_89, Lton_68, Lucky10_67, Moosehead_71, Morkie_71, OneDirection_65, Pepperoni_64, PhorbesPhlower_69, Shlim410_73, Twinkle_74,

Genes that have the "Most Annotated" start but do not call it:

-

Genes that do not have the "Most Annotated" start:

- BENtherdunthat_97, BearBQ_98, CheeseTouch_105, CurlyFries_108, Getalong_99, Jflix2_100, Madraxi_102, ODay_113, RegnumDei_102, SFuller_98, Shagrat_105, ShawBrad_104,

Summary by start number:

Start 16:

- Found in 2 of 31 (6.5%) of genes in pham
- Manual Annotations of this start: 2 of 26
- Called 100.0% of time when present
- Phage (with cluster) where this start called: CurlyFries_108 (CF), RegnumDei_102 (CF),

Start 18:

- Found in 1 of 31 (3.2%) of genes in pham
- Manual Annotations of this start: 1 of 26
- Called 100.0% of time when present
- Phage (with cluster) where this start called: Shagrat_105 (CF),

Start 20:

- Found in 19 of 31 (61.3%) of genes in pham
- Manual Annotations of this start: 16 of 26
- Called 100.0% of time when present
- Phage (with cluster) where this start called: Adora_72 (CZ4), Asapag_95 (DN1), BeeGee_80 (CY5), BritBrat_96 (CY2), DobbysSock_69 (CZ4), GMA4_62 (singleton), Hortense_75 (CZ4), Howe_75 (CZ4), InLimbo_68 (DH), Kuwabara_89 (DN4), Lton_68 (CZ), Lucky10_67 (DH), Moosehead_71 (CZ6), Morkie_71 (DH), OneDirection_65 (CZ6), Pepperoni_64 (CZ), PhorbesPhlower_69 (DH), Shlim410_73 (CZ4), Twinkle_74 (CZ4),

Start 21:

- Found in 6 of 31 (19.4%) of genes in pham
- Manual Annotations of this start: 5 of 26
- Called 100.0% of time when present
- Phage (with cluster) where this start called: BENtherdunthat_97 (DN1), BearBQ_98 (DN), CheeseTouch_105 (DN1), Getalong_99 (DN1), ODay_113 (DN), ShawBrad_104 (DN1),

Start 23:

- Found in 3 of 31 (9.7%) of genes in pham
- Manual Annotations of this start: 2 of 26
- Called 100.0% of time when present
- Phage (with cluster) where this start called: Jflix2_100 (CF), Madraxi_102 (CF), SFuller_98 (CF),

Summary by clusters:

There are 11 clusters represented in this pham: DN, CY2, singleton, DH, CY5, DN4, CZ6, CF, CZ4, CZ, DN1,

Info for manual annotations of cluster CF:

- Start number 16 was manually annotated 2 times for cluster CF.
- Start number 18 was manually annotated 1 time for cluster CF.
- Start number 23 was manually annotated 2 times for cluster CF.

Info for manual annotations of cluster CY2:

- Start number 20 was manually annotated 1 time for cluster CY2.

Info for manual annotations of cluster CY5:

- Start number 20 was manually annotated 1 time for cluster CY5.

Info for manual annotations of cluster CZ:

- Start number 20 was manually annotated 1 time for cluster CZ.

Info for manual annotations of cluster CZ4:

- Start number 20 was manually annotated 6 times for cluster CZ4.

Info for manual annotations of cluster CZ6:

- Start number 20 was manually annotated 2 times for cluster CZ6.

Info for manual annotations of cluster DH:

- Start number 20 was manually annotated 3 times for cluster DH.

Info for manual annotations of cluster DN:

- Start number 21 was manually annotated 2 times for cluster DN.

Info for manual annotations of cluster DN1:

- Start number 20 was manually annotated 1 time for cluster DN1.
- Start number 21 was manually annotated 3 times for cluster DN1.

Info for manual annotations of cluster DN4:

- Start number 20 was manually annotated 1 time for cluster DN4.

Gene Information:

Gene: Adora_72 Start: 48969, Stop: 49706, Start Num: 20

Candidate Starts for Adora_72:

(4, 48723), (9, 48870), (14, 48912), (Start: 20 @48969 has 16 MA's), (27, 49011), (29, 49044), (33, 49125), (34, 49128), (44, 49275), (56, 49425), (66, 49506), (68, 49518),

Gene: Asapag_95 Start: 52545, Stop: 53270, Start Num: 20

Candidate Starts for Asapag_95:

(Start: 20 @52545 has 16 MA's), (31, 52656), (42, 52833), (53, 52983), (56, 52998), (66, 53079), (67, 53088), (68, 53091), (73, 53133), (83, 53199), (87, 53244), (88, 53247),

Gene: BENtherdunthat_97 Start: 52077, Stop: 52805, Start Num: 21

Candidate Starts for BENtherdunthat_97:

(Start: 21 @52077 has 5 MA's), (29, 52152), (56, 52527), (57, 52548), (58, 52551), (60, 52575), (67, 52617), (68, 52620), (73, 52662), (74, 52665), (75, 52668), (76, 52671), (78, 52686), (79, 52698), (80, 52701), (86, 52767), (87, 52773),

Gene: BearBQ_98 Start: 53192, Stop: 53920, Start Num: 21

Candidate Starts for BearBQ_98:

(17, 53159), (Start: 21 @53192 has 5 MA's), (29, 53267), (40, 53450), (56, 53642), (58, 53666), (60, 53690), (67, 53732), (68, 53735), (73, 53777), (74, 53780), (75, 53783), (76, 53786), (78, 53801), (79, 53813), (80, 53816), (86, 53882), (87, 53888),

Gene: BeeGee_80 Start: 50088, Stop: 50837, Start Num: 20

Candidate Starts for BeeGee_80:

(10, 49998), (Start: 20 @50088 has 16 MA's), (34, 50253), (39, 50301), (52, 50532), (53, 50541), (66, 50637), (67, 50646), (68, 50649),

Gene: BritBrat_96 Start: 54041, Stop: 54766, Start Num: 20

Candidate Starts for BritBrat_96:

(2, 53711), (7, 53873), (11, 53969), (Start: 20 @54041 has 16 MA's), (29, 54116), (31, 54152), (56, 54494), (64, 54563), (66, 54575), (68, 54587), (87, 54740), (88, 54743),

Gene: CheeseTouch_105 Start: 51190, Stop: 51918, Start Num: 21

Candidate Starts for CheeseTouch_105:

(Start: 21 @51190 has 5 MA's), (29, 51265), (56, 51640), (57, 51661), (58, 51664), (60, 51688), (67, 51730), (68, 51733), (73, 51775), (74, 51778), (75, 51781), (76, 51784), (78, 51799), (79, 51811), (80, 51814), (86, 51880), (87, 51886),

Gene: CurlyFries_108 Start: 55209, Stop: 55973, Start Num: 16

Candidate Starts for CurlyFries_108:

(Start: 16 @55209 has 2 MA's), (22, 55257), (27, 55293), (28, 55302), (30, 55350), (37, 55452), (43, 55533), (46, 55569), (49, 55605), (55, 55668), (62, 55719), (63, 55728), (69, 55767), (76, 55809), (77, 55821),

Gene: DobbysSock_69 Start: 45937, Stop: 46674, Start Num: 20

Candidate Starts for DobbysSock_69:

(Start: 20 @45937 has 16 MA's), (27, 45979), (29, 46012), (34, 46096), (44, 46243), (56, 46393), (66, 46474), (68, 46486),

Gene: GMA4_62 Start: 40731, Stop: 41486, Start Num: 20

Candidate Starts for GMA4_62:

(1, 40401), (Start: 20 @40731 has 16 MA's), (49, 41109), (65, 41280), (68, 41298), (75, 41346),

Gene: Getalong_99 Start: 53422, Stop: 54150, Start Num: 21

Candidate Starts for Getalong_99:

(Start: 21 @53422 has 5 MA's), (29, 53497), (40, 53680), (56, 53872), (58, 53896), (59, 53908), (60, 53920), (67, 53962), (68, 53965), (73, 54007), (74, 54010), (75, 54013), (76, 54016), (78, 54031), (79, 54043), (80, 54046), (86, 54112), (87, 54118),

Gene: Hortense_75 Start: 50324, Stop: 51061, Start Num: 20

Candidate Starts for Hortense_75:

(4, 50078), (9, 50225), (14, 50267), (Start: 20 @50324 has 16 MA's), (27, 50366), (29, 50399), (33, 50480), (34, 50483), (44, 50630), (56, 50780), (66, 50861), (68, 50873),

Gene: Howe_75 Start: 50324, Stop: 51061, Start Num: 20

Candidate Starts for Howe_75:

(4, 50078), (9, 50225), (14, 50267), (Start: 20 @50324 has 16 MA's), (27, 50366), (29, 50399), (33, 50480), (34, 50483), (44, 50630), (56, 50780), (66, 50861), (68, 50873),

Gene: InLimbo_68 Start: 39899, Stop: 40642, Start Num: 20

Candidate Starts for InLimbo_68:

(6, 39728), (Start: 20 @39899 has 16 MA's), (34, 40064), (56, 40361), (66, 40442), (67, 40451), (68, 40454),

Gene: Jflix2_100 Start: 57187, Stop: 57882, Start Num: 23

Candidate Starts for Jflix2_100:

(Start: 23 @57187 has 2 MA's), (25, 57205), (29, 57244), (32, 57286), (33, 57328), (36, 57364), (41, 57436), (45, 57484), (50, 57559), (58, 57625), (70, 57706), (76, 57742), (81, 57775), (82, 57778), (85, 57814), (86, 57835), (89, 57874),

Gene: Kuwabara_89 Start: 52072, Stop: 52815, Start Num: 20

Candidate Starts for Kuwabara_89:

(6, 51901), (Start: 20 @52072 has 16 MA's), (34, 52237), (56, 52534), (66, 52615), (67, 52624), (68, 52627),

Gene: Lton_68 Start: 39225, Stop: 39968, Start Num: 20

Candidate Starts for Lton_68:

(6, 39054), (Start: 20 @39225 has 16 MA's), (34, 39390), (56, 39687), (66, 39768), (67, 39777), (68, 39780),

Gene: Lucky10_67 Start: 41325, Stop: 42068, Start Num: 20

Candidate Starts for Lucky10_67:

(5, 41145), (12, 41274), (13, 41277), (Start: 20 @41325 has 16 MA's), (29, 41406), (34, 41490), (35, 41514), (56, 41787), (66, 41868), (67, 41877), (68, 41880),

Gene: Madraxi_102 Start: 59347, Stop: 60069, Start Num: 23

Candidate Starts for Madraxi_102:

(Start: 23 @59347 has 2 MA's), (25, 59365), (29, 59404), (32, 59446), (33, 59488), (36, 59524), (38, 59536), (41, 59596), (47, 59671), (70, 59866), (78, 59917), (82, 59938), (84, 59968), (90, 60040),

Gene: Moosehead_71 Start: 39747, Stop: 40490, Start Num: 20

Candidate Starts for Moosehead_71:

(12, 39696), (13, 39699), (Start: 20 @39747 has 16 MA's), (34, 39912), (35, 39936), (66, 40290), (68, 40302), (74, 40347),

Gene: Morkie_71 Start: 40373, Stop: 41116, Start Num: 20

Candidate Starts for Morkie_71:

(6, 40202), (Start: 20 @40373 has 16 MA's), (34, 40538), (56, 40835), (66, 40916), (67, 40925), (68, 40928),

Gene: ODay_113 Start: 56624, Stop: 57352, Start Num: 21

Candidate Starts for ODay_113:

(15, 56576), (19, 56612), (Start: 21 @56624 has 5 MA's), (29, 56699), (34, 56777), (56, 57074), (58, 57098), (60, 57122), (67, 57164), (68, 57167), (71, 57200), (73, 57209), (74, 57212), (75, 57215), (76, 57218), (78, 57233), (79, 57245), (80, 57248), (86, 57314), (87, 57320),

Gene: OneDirection_65 Start: 37787, Stop: 38530, Start Num: 20

Candidate Starts for OneDirection_65:

(6, 37616), (Start: 20 @37787 has 16 MA's), (34, 37952), (56, 38249), (66, 38330), (67, 38339), (68, 38342),

Gene: Pepperoni_64 Start: 38913, Stop: 39656, Start Num: 20

Candidate Starts for Pepperoni_64:

(Start: 20 @38913 has 16 MA's), (34, 39078), (56, 39375), (66, 39456), (67, 39465), (68, 39468),

Gene: PhorbesPhlower_69 Start: 39768, Stop: 40511, Start Num: 20

Candidate Starts for PhorbesPhlower_69:

(6, 39597), (Start: 20 @39768 has 16 MA's), (34, 39933), (56, 40230), (66, 40311), (67, 40320), (68, 40323),

Gene: RegnumDei_102 Start: 55850, Stop: 56620, Start Num: 16

Candidate Starts for RegnumDei_102:

(Start: 16 @55850 has 2 MA's), (22, 55898), (27, 55934), (28, 55943), (30, 55991), (37, 56093), (43, 56174), (46, 56210), (49, 56246), (54, 56306), (61, 56363), (63, 56375), (69, 56414), (72, 56444), (76, 56456), (77, 56468),

Gene: SFuller_98 Start: 57309, Stop: 58004, Start Num: 23

Candidate Starts for SFuller_98:

(Start: 23 @57309 has 2 MA's), (25, 57327), (29, 57366), (32, 57408), (33, 57450), (36, 57486), (41, 57558), (48, 57636), (50, 57681), (58, 57747), (70, 57828), (76, 57864), (81, 57897), (82, 57900), (85, 57936), (86, 57957), (89, 57996),

Gene: Shagrat_105 Start: 54894, Stop: 55640, Start Num: 18

Candidate Starts for Shagrat_105:

(3, 54600), (8, 54804), (11, 54837), (Start: 18 @54894 has 1 MA's), (24, 54939), (26, 54954), (28, 54969), (37, 55119), (43, 55200), (46, 55236), (49, 55272), (51, 55299), (61, 55386), (62, 55389), (69, 55437), (72, 55467), (76, 55479), (77, 55491), (82, 55515),

Gene: ShawBrad_104 Start: 52546, Stop: 53271, Start Num: 21

Candidate Starts for ShawBrad_104:

(Start: 21 @52546 has 5 MA's), (31, 52657), (42, 52834), (53, 52984), (56, 52999), (66, 53080), (67, 53089), (68, 53092), (83, 53200), (87, 53245), (88, 53248),

Gene: Shlim410_73 Start: 50324, Stop: 51061, Start Num: 20

Candidate Starts for Shlim410_73:

(4, 50078), (9, 50225), (14, 50267), (Start: 20 @50324 has 16 MA's), (27, 50366), (29, 50399), (33, 50480), (34, 50483), (44, 50630), (56, 50780), (66, 50861), (68, 50873),

Gene: Twinkle_74 Start: 51383, Stop: 52120, Start Num: 20

Candidate Starts for Twinkle_74:

(4, 51137), (9, 51284), (14, 51326), (Start: 20 @51383 has 16 MA's), (27, 51425), (29, 51458), (33, 51539), (34, 51542), (44, 51689), (56, 51839), (66, 51920), (68, 51932),