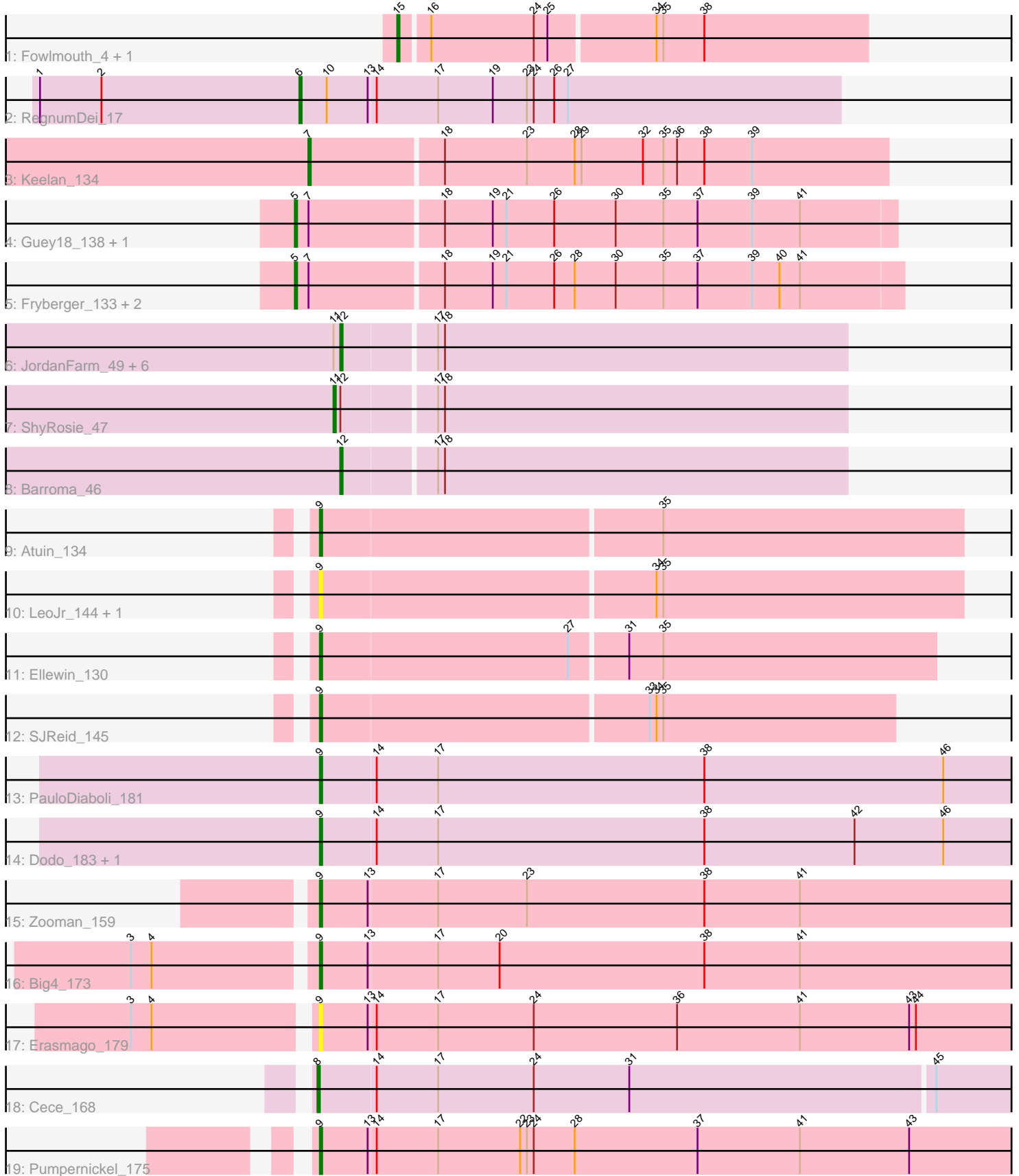


Pham 296800



Note: Tracks are now grouped by subcluster and scaled. Switching in subcluster is indicated by changes in track color. Track scale is now set by default to display the region 30 bp upstream of start 1 to 30 bp downstream of the last possible start. If this default region is judged to be packed too tightly with annotated starts, the track will be further scaled to only show that region of the ORF with annotated starts. This action will be indicated by adding "Zoomed" to the title. For starts, yellow indicates the location of called starts comprised solely of Glimmer/GeneMark auto-annotations, green indicates the location of called starts with at least 1 manual gene annotation.

## Pham 296800 Report

This analysis was run 04/25/26 on database version 644.

Pham number 296800 has 31 members, 6 are drafts.

Phages represented in each track:

- Track 1 : Fowlmouth\_4, MrMiyagi\_4
- Track 2 : RegnumDei\_17
- Track 3 : Keelan\_134
- Track 4 : Guey18\_138, Ziko\_137
- Track 5 : Fryberger\_133, Volt\_138, Ronaldo\_135
- Track 6 : JordanFarm\_49, Waterlily\_50, Truong\_47, Ashton\_48, AloeVera\_48, SoilSleuth\_49, Akoni\_47
- Track 7 : ShyRosie\_47
- Track 8 : Barroma\_46
- Track 9 : Atuin\_134
- Track 10 : LeoJr\_144, ReginaGlobina\_143
- Track 11 : Ellewin\_130
- Track 12 : SJReid\_145
- Track 13 : PauloDiaboli\_181
- Track 14 : Dodo\_183, A3Wally\_182
- Track 15 : Zooman\_159
- Track 16 : Big4\_173
- Track 17 : Erasmago\_179
- Track 18 : Cece\_168
- Track 19 : Pumpernickel\_175

### ***Summary of Final Annotations (See graph section above for start numbers):***

The start number called the most often in the published annotations is 9, it was called in 8 of the 25 non-draft genes in the pham.

Genes that call this "Most Annotated" start:

- A3Wally\_182, Atuin\_134, Big4\_173, Dodo\_183, Ellewin\_130, Erasmago\_179, LeoJr\_144, PauloDiaboli\_181, Pumpernickel\_175, ReginaGlobina\_143, SJReid\_145, Zooman\_159,

Genes that have the "Most Annotated" start but do not call it:

-

Genes that do not have the "Most Annotated" start:

- Akoni\_47, AloeVera\_48, Ashton\_48, Barroma\_46, Cece\_168, Fowlmouth\_4, Fryberger\_133, Guey18\_138, JordanFarm\_49, Keelan\_134, MrMiyagi\_4, RegnumDei\_17, Ronaldo\_135, ShyRosie\_47, SoilSleuth\_49, Truong\_47, Volt\_138, Waterlily\_50, Ziko\_137,

### Summary by start number:

Start 5:

- Found in 5 of 31 ( 16.1% ) of genes in pham
- Manual Annotations of this start: 5 of 25
- Called 100.0% of time when present
- Phage (with cluster) where this start called: Fryberger\_133 (DP), Guey18\_138 (DP), Ronaldo\_135 (DP), Volt\_138 (DP), Ziko\_137 (DP),

Start 6:

- Found in 1 of 31 ( 3.2% ) of genes in pham
- Manual Annotations of this start: 1 of 25
- Called 100.0% of time when present
- Phage (with cluster) where this start called: RegnumDei\_17 (CF),

Start 7:

- Found in 6 of 31 ( 19.4% ) of genes in pham
- Manual Annotations of this start: 1 of 25
- Called 16.7% of time when present
- Phage (with cluster) where this start called: Keelan\_134 (DP),

Start 8:

- Found in 1 of 31 ( 3.2% ) of genes in pham
- Manual Annotations of this start: 1 of 25
- Called 100.0% of time when present
- Phage (with cluster) where this start called: Cece\_168 (GD3),

Start 9:

- Found in 12 of 31 ( 38.7% ) of genes in pham
- Manual Annotations of this start: 8 of 25
- Called 100.0% of time when present
- Phage (with cluster) where this start called: A3Wally\_182 (GD1), Atuin\_134 (FC), Big4\_173 (GD2), Dodo\_183 (GD1), Ellewin\_130 (FC), Erasmago\_179 (GD2), LeoJr\_144 (FC), PauloDiaboli\_181 (GD1), Pumpernickel\_175 (GD4), ReginaGlobina\_143 (FC), SJReid\_145 (FC), Zooman\_159 (GD2),

Start 11:

- Found in 8 of 31 ( 25.8% ) of genes in pham
- Manual Annotations of this start: 1 of 25
- Called 12.5% of time when present
- Phage (with cluster) where this start called: ShyRosie\_47 (EK2),

Start 12:

- Found in 9 of 31 ( 29.0% ) of genes in pham
- Manual Annotations of this start: 6 of 25
- Called 88.9% of time when present

- Phage (with cluster) where this start called: Akoni\_47 (EK2), AloeVera\_48 (EK2), Ashton\_48 (EK2), Barroma\_46 (EK2), JordanFarm\_49 (EK2), SoilSleuth\_49 (EK2), Truong\_47 (EK2), Waterlily\_50 (EK2),

Start 15:

- Found in 2 of 31 ( 6.5% ) of genes in pham
- Manual Annotations of this start: 2 of 25
- Called 100.0% of time when present
- Phage (with cluster) where this start called: Fowlmouth\_4 (AC), MrMiyagi\_4 (AC),

### **Summary by clusters:**

There are 9 clusters represented in this pham: AC, GD1, GD2, GD3, GD4, CF, FC, EK2, DP,

Info for manual annotations of cluster AC:

- Start number 15 was manually annotated 2 times for cluster AC.

Info for manual annotations of cluster CF:

- Start number 6 was manually annotated 1 time for cluster CF.

Info for manual annotations of cluster DP:

- Start number 5 was manually annotated 5 times for cluster DP.
- Start number 7 was manually annotated 1 time for cluster DP.

Info for manual annotations of cluster EK2:

- Start number 11 was manually annotated 1 time for cluster EK2.
- Start number 12 was manually annotated 6 times for cluster EK2.

Info for manual annotations of cluster FC:

- Start number 9 was manually annotated 3 times for cluster FC.

Info for manual annotations of cluster GD1:

- Start number 9 was manually annotated 2 times for cluster GD1.

Info for manual annotations of cluster GD2:

- Start number 9 was manually annotated 2 times for cluster GD2.

Info for manual annotations of cluster GD3:

- Start number 8 was manually annotated 1 time for cluster GD3.

Info for manual annotations of cluster GD4:

- Start number 9 was manually annotated 1 time for cluster GD4.

### **Gene Information:**

Gene: A3Wally\_182 Start: 100432, Stop: 100740, Start Num: 9

Candidate Starts for A3Wally\_182:

(Start: 9 @100432 has 8 MA's), (14, 100456), (17, 100483), (38, 100600), (42, 100666), (46, 100705),

Gene: Akoni\_47 Start: 48233, Stop: 48451, Start Num: 12

Candidate Starts for Akoni\_47:

(Start: 11 @48230 has 1 MA's), (Start: 12 @48233 has 6 MA's), (17, 48272), (18, 48275),

Gene: AloeVera\_48 Start: 48446, Stop: 48664, Start Num: 12

Candidate Starts for AloeVera\_48:

(Start: 11 @48443 has 1 MA's), (Start: 12 @48446 has 6 MA's), (17, 48485), (18, 48488),

Gene: Ashton\_48 Start: 48445, Stop: 48663, Start Num: 12

Candidate Starts for Ashton\_48:

(Start: 11 @48442 has 1 MA's), (Start: 12 @48445 has 6 MA's), (17, 48484), (18, 48487),

Gene: Atuin\_134 Start: 97267, Stop: 97545, Start Num: 9

Candidate Starts for Atuin\_134:

(Start: 9 @97267 has 8 MA's), (35, 97414),

Gene: Barroma\_46 Start: 48235, Stop: 48453, Start Num: 12

Candidate Starts for Barroma\_46:

(Start: 12 @48235 has 6 MA's), (17, 48274), (18, 48277),

Gene: Big4\_173 Start: 97536, Stop: 97844, Start Num: 9

Candidate Starts for Big4\_173:

(3, 97461), (4, 97470), (Start: 9 @97536 has 8 MA's), (13, 97557), (17, 97587), (20, 97614), (38, 97704), (41, 97746),

Gene: Cece\_168 Start: 102563, Stop: 102877, Start Num: 8

Candidate Starts for Cece\_168:

(Start: 8 @102563 has 1 MA's), (14, 102587), (17, 102614), (24, 102656), (31, 102698), (45, 102830),

Gene: Dodo\_183 Start: 100044, Stop: 100352, Start Num: 9

Candidate Starts for Dodo\_183:

(Start: 9 @100044 has 8 MA's), (14, 100068), (17, 100095), (38, 100212), (42, 100278), (46, 100317),

Gene: Ellewin\_130 Start: 93437, Stop: 93703, Start Num: 9

Candidate Starts for Ellewin\_130:

(Start: 9 @93437 has 8 MA's), (27, 93545), (31, 93569), (35, 93584),

Gene: Erasmago\_179 Start: 97859, Stop: 98167, Start Num: 9

Candidate Starts for Erasmago\_179:

(3, 97784), (4, 97793), (Start: 9 @97859 has 8 MA's), (13, 97880), (14, 97883), (17, 97910), (24, 97952), (36, 98015), (41, 98069), (43, 98117), (44, 98120),

Gene: Fowlmouth\_4 Start: 3411, Stop: 3611, Start Num: 15

Candidate Starts for Fowlmouth\_4:

(Start: 15 @3411 has 2 MA's), (16, 3423), (24, 3468), (25, 3474), (34, 3519), (35, 3522), (38, 3540),

Gene: Fryberger\_133 Start: 63596, Stop: 63859, Start Num: 5

Candidate Starts for Fryberger\_133:

(Start: 5 @63596 has 5 MA's), (Start: 7 @63602 has 1 MA's), (18, 63659), (19, 63680), (21, 63686), (26, 63707), (28, 63716), (30, 63734), (35, 63755), (37, 63770), (39, 63794), (40, 63806), (41, 63815),

Gene: Guey18\_138 Start: 64810, Stop: 65070, Start Num: 5

Candidate Starts for Guey18\_138:

(Start: 5 @64810 has 5 MA's), (Start: 7 @64816 has 1 MA's), (18, 64873), (19, 64894), (21, 64900), (26, 64921), (30, 64948), (35, 64969), (37, 64984), (39, 65008), (41, 65029),

Gene: JordanFarm\_49 Start: 48446, Stop: 48664, Start Num: 12

Candidate Starts for JordanFarm\_49:

(Start: 11 @48443 has 1 MA's), (Start: 12 @48446 has 6 MA's), (17, 48485), (18, 48488),

Gene: Keelan\_134 Start: 64318, Stop: 64569, Start Num: 7

Candidate Starts for Keelan\_134:

(Start: 7 @64318 has 1 MA's), (18, 64375), (23, 64411), (28, 64432), (29, 64435), (32, 64462), (35, 64471), (36, 64477), (38, 64489), (39, 64510),

Gene: LeoJr\_144 Start: 97868, Stop: 98146, Start Num: 9

Candidate Starts for LeoJr\_144:

(Start: 9 @97868 has 8 MA's), (34, 98012), (35, 98015),

Gene: MrMiyagi\_4 Start: 3411, Stop: 3611, Start Num: 15

Candidate Starts for MrMiyagi\_4:

(Start: 15 @3411 has 2 MA's), (16, 3423), (24, 3468), (25, 3474), (34, 3519), (35, 3522), (38, 3540),

Gene: PauloDiaboli\_181 Start: 98479, Stop: 98787, Start Num: 9

Candidate Starts for PauloDiaboli\_181:

(Start: 9 @98479 has 8 MA's), (14, 98503), (17, 98530), (38, 98647), (46, 98752),

Gene: Pumpernickel\_175 Start: 100142, Stop: 100450, Start Num: 9

Candidate Starts for Pumpernickel\_175:

(Start: 9 @100142 has 8 MA's), (13, 100163), (14, 100166), (17, 100193), (22, 100229), (23, 100232), (24, 100235), (28, 100253), (37, 100307), (41, 100352), (43, 100400),

Gene: ReginaGlobina\_143 Start: 98090, Stop: 98368, Start Num: 9

Candidate Starts for ReginaGlobina\_143:

(Start: 9 @98090 has 8 MA's), (34, 98234), (35, 98237),

Gene: RegnumDei\_17 Start: 12127, Stop: 12363, Start Num: 6

Candidate Starts for RegnumDei\_17:

(1, 12013), (2, 12040), (Start: 6 @12127 has 1 MA's), (10, 12139), (13, 12157), (14, 12160), (17, 12187), (19, 12211), (23, 12226), (24, 12229), (26, 12238), (27, 12244),

Gene: Ronaldo\_135 Start: 64501, Stop: 64764, Start Num: 5

Candidate Starts for Ronaldo\_135:

(Start: 5 @64501 has 5 MA's), (Start: 7 @64507 has 1 MA's), (18, 64564), (19, 64585), (21, 64591), (26, 64612), (28, 64621), (30, 64639), (35, 64660), (37, 64675), (39, 64699), (40, 64711), (41, 64720),

Gene: SJReid\_145 Start: 88739, Stop: 88987, Start Num: 9

Candidate Starts for SJReid\_145:

(Start: 9 @88739 has 8 MA's), (33, 88880), (34, 88883), (35, 88886),

Gene: ShyRosie\_47 Start: 48452, Stop: 48673, Start Num: 11

Candidate Starts for ShyRosie\_47:

(Start: 11 @48452 has 1 MA's), (Start: 12 @48455 has 6 MA's), (17, 48494), (18, 48497),

Gene: SoilSleuth\_49 Start: 48277, Stop: 48495, Start Num: 12

Candidate Starts for SoilSleuth\_49:

(Start: 11 @48274 has 1 MA's), (Start: 12 @48277 has 6 MA's), (17, 48316), (18, 48319),

Gene: Truong\_47 Start: 48235, Stop: 48453, Start Num: 12

Candidate Starts for Truong\_47:

(Start: 11 @48232 has 1 MA's), (Start: 12 @48235 has 6 MA's), (17, 48274), (18, 48277),

Gene: Volt\_138 Start: 64665, Stop: 64928, Start Num: 5

Candidate Starts for Volt\_138:

(Start: 5 @64665 has 5 MA's), (Start: 7 @64671 has 1 MA's), (18, 64728), (19, 64749), (21, 64755), (26, 64776), (28, 64785), (30, 64803), (35, 64824), (37, 64839), (39, 64863), (40, 64875), (41, 64884),

Gene: Waterlily\_50 Start: 48486, Stop: 48704, Start Num: 12

Candidate Starts for Waterlily\_50:

(Start: 11 @48483 has 1 MA's), (Start: 12 @48486 has 6 MA's), (17, 48525), (18, 48528),

Gene: Ziko\_137 Start: 64772, Stop: 65032, Start Num: 5

Candidate Starts for Ziko\_137:

(Start: 5 @64772 has 5 MA's), (Start: 7 @64778 has 1 MA's), (18, 64835), (19, 64856), (21, 64862), (26, 64883), (30, 64910), (35, 64931), (37, 64946), (39, 64970), (41, 64991),

Gene: Zooman\_159 Start: 94719, Stop: 95027, Start Num: 9

Candidate Starts for Zooman\_159:

(Start: 9 @94719 has 8 MA's), (13, 94740), (17, 94770), (23, 94809), (38, 94887), (41, 94929),