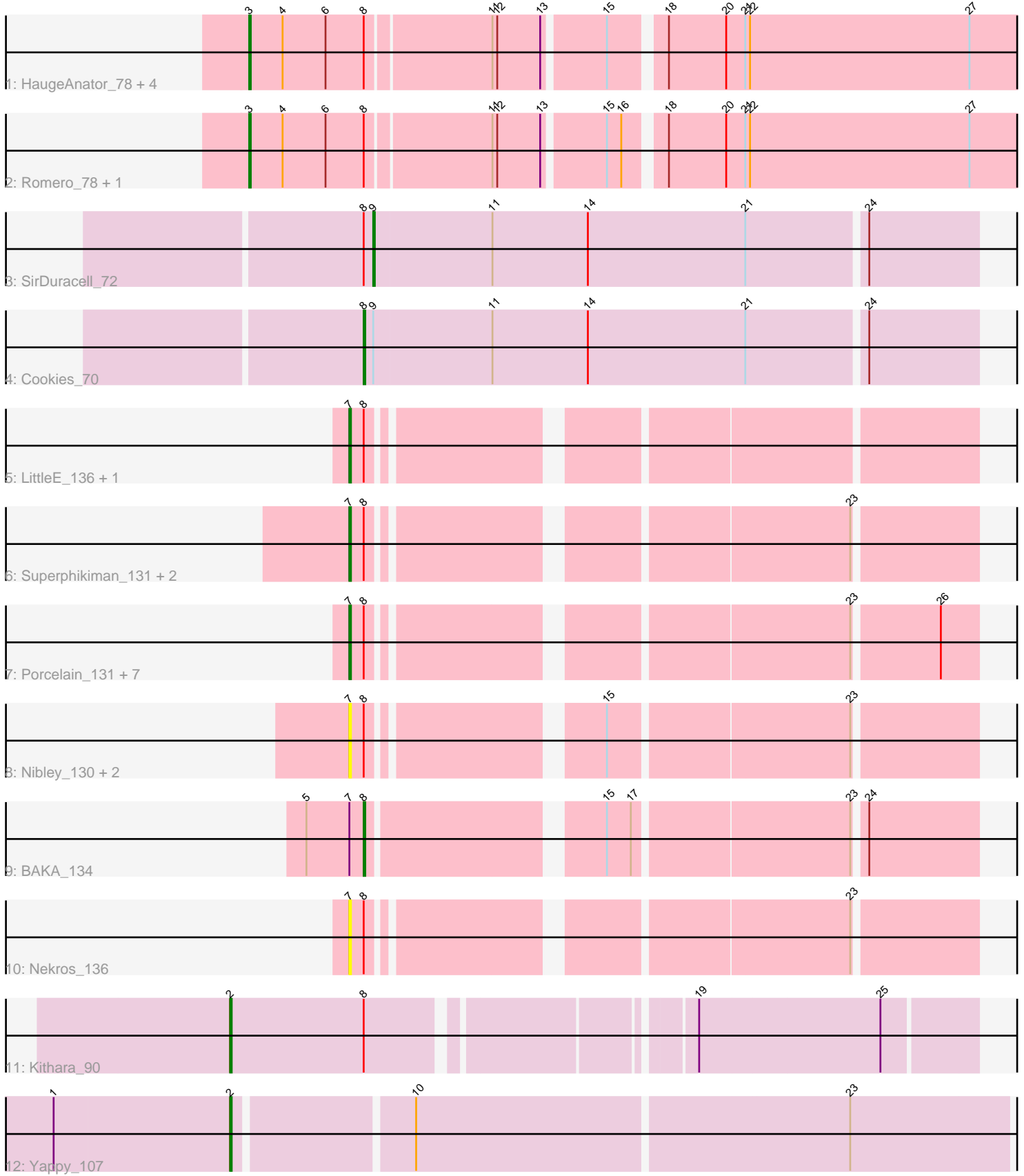


Pham 296820



Note: Tracks are now grouped by subcluster and scaled. Switching in subcluster is indicated by changes in track color. Track scale is now set by default to display the region 30 bp upstream of start 1 to 30 bp downstream of the last possible start. If this default region is judged to be packed too tightly with annotated starts, the track will be further scaled to only show that region of the ORF with annotated starts. This action will be indicated by adding "Zoomed" to the title. For starts, yellow indicates the location of called starts comprised solely of Glimmer/GeneMark auto-annotations, green indicates the location of called starts with at least 1 manual gene annotation.

Pham 296820 Report

This analysis was run 04/25/26 on database version 644.

Pham number 296820 has 29 members, 6 are drafts.

Phages represented in each track:

- Track 1 : HaugeAnator_78, Percastrophe_78, ZooBear_78, Immanuel3_76, ToriToki_78
- Track 2 : Romero_78, Olicious_78
- Track 3 : SirDuracell_72
- Track 4 : Cookies_70
- Track 5 : LittleE_136, Omega_143
- Track 6 : Superphikiman_131, Courthouse_129, Ariel_133
- Track 7 : Porcelain_131, Rearden_132, Hannaconda_127, Squint_131, Lucky2013_128, MiaZeal_133, Gonephishing_128, KashFlow_131
- Track 8 : Nibley_130, Shaboozey_134, BronnyJames_131
- Track 9 : BAKA_134
- Track 10 : Nekros_136
- Track 11 : Kithara_90
- Track 12 : Yappy_107

Summary of Final Annotations (See graph section above for start numbers):

The start number called the most often in the published annotations is 7, it was called in 11 of the 23 non-draft genes in the pham.

Genes that call this "Most Annotated" start:

- Ariel_133, BronnyJames_131, Courthouse_129, Gonephishing_128, Hannaconda_127, KashFlow_131, LittleE_136, Lucky2013_128, MiaZeal_133, Nekros_136, Nibley_130, Omega_143, Porcelain_131, Rearden_132, Shaboozey_134, Squint_131, Superphikiman_131,

Genes that have the "Most Annotated" start but do not call it:

- BAKA_134,

Genes that do not have the "Most Annotated" start:

- Cookies_70, HaugeAnator_78, Immanuel3_76, Kithara_90, Olicious_78, Percastrophe_78, Romero_78, SirDuracell_72, ToriToki_78, Yappy_107, ZooBear_78,

Summary by start number:

Start 2:

- Found in 2 of 29 (6.9%) of genes in pham
- Manual Annotations of this start: 2 of 23
- Called 100.0% of time when present
- Phage (with cluster) where this start called: Kithara_90 (singleton), Yappy_107 (singleton),

Start 3:

- Found in 7 of 29 (24.1%) of genes in pham
- Manual Annotations of this start: 7 of 23
- Called 100.0% of time when present
- Phage (with cluster) where this start called: HaugeAnator_78 (BF), Immanuel3_76 (BF), Olicious_78 (BF), Percastrophe_78 (BF), Romero_78 (BF), ToriToki_78 (BF), ZooBear_78 (BF),

Start 7:

- Found in 18 of 29 (62.1%) of genes in pham
- Manual Annotations of this start: 11 of 23
- Called 94.4% of time when present
- Phage (with cluster) where this start called: Ariel_133 (J), BronnyJames_131 (J), Courthouse_129 (J), Gonephishing_128 (J), Hannaconda_127 (J), KashFlow_131 (J), LittleE_136 (J), Lucky2013_128 (J), MiaZeal_133 (J), Nekros_136 (J), Nibley_130 (J), Omega_143 (J), Porcelain_131 (J), Rearden_132 (J), Shaboozey_134 (J), Squint_131 (J), Superphikiman_131 (J),

Start 8:

- Found in 28 of 29 (96.6%) of genes in pham
- Manual Annotations of this start: 2 of 23
- Called 7.1% of time when present
- Phage (with cluster) where this start called: BAKA_134 (J), Cookies_70 (E),

Start 9:

- Found in 2 of 29 (6.9%) of genes in pham
- Manual Annotations of this start: 1 of 23
- Called 50.0% of time when present
- Phage (with cluster) where this start called: SirDuracell_72 (E),

Summary by clusters:

There are 4 clusters represented in this pham: BF, J, E, singleton,

Info for manual annotations of cluster BF:

- Start number 3 was manually annotated 7 times for cluster BF.

Info for manual annotations of cluster E:

- Start number 8 was manually annotated 1 time for cluster E.
- Start number 9 was manually annotated 1 time for cluster E.

Info for manual annotations of cluster J:

- Start number 7 was manually annotated 11 times for cluster J.
- Start number 8 was manually annotated 1 time for cluster J.

Gene Information:

Gene: Ariel_133 Start: 69964, Stop: 70317, Start Num: 7

Candidate Starts for Ariel_133:

(Start: 7 @69964 has 11 MA's), (Start: 8 @69973 has 2 MA's), (23, 70243),

Gene: BAKA_134 Start: 72670, Stop: 73020, Start Num: 8

Candidate Starts for BAKA_134:

(5, 72634), (Start: 7 @72661 has 11 MA's), (Start: 8 @72670 has 2 MA's), (15, 72802), (17, 72817), (23, 72946), (24, 72952),

Gene: BronnyJames_131 Start: 71229, Stop: 71582, Start Num: 7

Candidate Starts for BronnyJames_131:

(Start: 7 @71229 has 11 MA's), (Start: 8 @71238 has 2 MA's), (15, 71364), (23, 71508),

Gene: Cookies_70 Start: 46974, Stop: 47351, Start Num: 8

Candidate Starts for Cookies_70:

(Start: 8 @46974 has 2 MA's), (Start: 9 @46980 has 1 MA's), (11, 47052), (14, 47112), (21, 47211), (24, 47283),

Gene: Courthouse_129 Start: 69822, Stop: 70175, Start Num: 7

Candidate Starts for Courthouse_129:

(Start: 7 @69822 has 11 MA's), (Start: 8 @69831 has 2 MA's), (23, 70101),

Gene: Gonephishing_128 Start: 69464, Stop: 69817, Start Num: 7

Candidate Starts for Gonephishing_128:

(Start: 7 @69464 has 11 MA's), (Start: 8 @69473 has 2 MA's), (23, 69743), (26, 69794),

Gene: Hannaconda_127 Start: 70117, Stop: 70470, Start Num: 7

Candidate Starts for Hannaconda_127:

(Start: 7 @70117 has 11 MA's), (Start: 8 @70126 has 2 MA's), (23, 70396), (26, 70447),

Gene: HaugeAnator_78 Start: 40177, Stop: 39656, Start Num: 3

Candidate Starts for HaugeAnator_78:

(Start: 3 @40177 has 7 MA's), (4, 40156), (6, 40129), (Start: 8 @40105 has 2 MA's), (11, 40030), (12, 40027), (13, 40000), (15, 39964), (18, 39934), (20, 39898), (21, 39886), (22, 39883), (27, 39745),

Gene: Immanuel3_76 Start: 40182, Stop: 39661, Start Num: 3

Candidate Starts for Immanuel3_76:

(Start: 3 @40182 has 7 MA's), (4, 40161), (6, 40134), (Start: 8 @40110 has 2 MA's), (11, 40035), (12, 40032), (13, 40005), (15, 39969), (18, 39939), (20, 39903), (21, 39891), (22, 39888), (27, 39750),

Gene: KashFlow_131 Start: 71552, Stop: 71905, Start Num: 7

Candidate Starts for KashFlow_131:

(Start: 7 @71552 has 11 MA's), (Start: 8 @71561 has 2 MA's), (23, 71831), (26, 71882),

Gene: Kithara_90 Start: 59830, Stop: 59399, Start Num: 2

Candidate Starts for Kithara_90:

(Start: 2 @59830 has 2 MA's), (Start: 8 @59746 has 2 MA's), (19, 59566), (25, 59455),

Gene: LittleE_136 Start: 72806, Stop: 73159, Start Num: 7
Candidate Starts for LittleE_136:
(Start: 7 @72806 has 11 MA's), (Start: 8 @72815 has 2 MA's),

Gene: Lucky2013_128 Start: 69682, Stop: 70035, Start Num: 7
Candidate Starts for Lucky2013_128:
(Start: 7 @69682 has 11 MA's), (Start: 8 @69691 has 2 MA's), (23, 69961), (26, 70012),

Gene: MiaZeal_133 Start: 70821, Stop: 71174, Start Num: 7
Candidate Starts for MiaZeal_133:
(Start: 7 @70821 has 11 MA's), (Start: 8 @70830 has 2 MA's), (23, 71100), (26, 71151),

Gene: Nekros_136 Start: 74272, Stop: 74625, Start Num: 7
Candidate Starts for Nekros_136:
(Start: 7 @74272 has 11 MA's), (Start: 8 @74281 has 2 MA's), (23, 74551),

Gene: Nibley_130 Start: 70806, Stop: 71159, Start Num: 7
Candidate Starts for Nibley_130:
(Start: 7 @70806 has 11 MA's), (Start: 8 @70815 has 2 MA's), (15, 70941), (23, 71085),

Gene: Olicious_78 Start: 40180, Stop: 39659, Start Num: 3
Candidate Starts for Olicious_78:
(Start: 3 @40180 has 7 MA's), (4, 40159), (6, 40132), (Start: 8 @40108 has 2 MA's), (11, 40033), (12, 40030), (13, 40003), (15, 39967), (16, 39958), (18, 39937), (20, 39901), (21, 39889), (22, 39886), (27, 39748),

Gene: Omega_143 Start: 74487, Stop: 74840, Start Num: 7
Candidate Starts for Omega_143:
(Start: 7 @74487 has 11 MA's), (Start: 8 @74496 has 2 MA's),

Gene: Percastrophe_78 Start: 40112, Stop: 39591, Start Num: 3
Candidate Starts for Percastrophe_78:
(Start: 3 @40112 has 7 MA's), (4, 40091), (6, 40064), (Start: 8 @40040 has 2 MA's), (11, 39965), (12, 39962), (13, 39935), (15, 39899), (18, 39869), (20, 39833), (21, 39821), (22, 39818), (27, 39680),

Gene: Porcelain_131 Start: 70628, Stop: 70981, Start Num: 7
Candidate Starts for Porcelain_131:
(Start: 7 @70628 has 11 MA's), (Start: 8 @70637 has 2 MA's), (23, 70907), (26, 70958),

Gene: Rearden_132 Start: 71022, Stop: 71375, Start Num: 7
Candidate Starts for Rearden_132:
(Start: 7 @71022 has 11 MA's), (Start: 8 @71031 has 2 MA's), (23, 71301), (26, 71352),

Gene: Romero_78 Start: 40173, Stop: 39652, Start Num: 3
Candidate Starts for Romero_78:
(Start: 3 @40173 has 7 MA's), (4, 40152), (6, 40125), (Start: 8 @40101 has 2 MA's), (11, 40026), (12, 40023), (13, 39996), (15, 39960), (16, 39951), (18, 39930), (20, 39894), (21, 39882), (22, 39879), (27, 39741),

Gene: Shaboozey_134 Start: 71250, Stop: 71603, Start Num: 7
Candidate Starts for Shaboozey_134:
(Start: 7 @71250 has 11 MA's), (Start: 8 @71259 has 2 MA's), (15, 71385), (23, 71529),

Gene: SirDuracell_72 Start: 46147, Stop: 46518, Start Num: 9

Candidate Starts for SirDuracell_72:

(Start: 8 @46141 has 2 MA's), (Start: 9 @46147 has 1 MA's), (11, 46219), (14, 46279), (21, 46378), (24, 46450),

Gene: Squint_131 Start: 70888, Stop: 71241, Start Num: 7

Candidate Starts for Squint_131:

(Start: 7 @70888 has 11 MA's), (Start: 8 @70897 has 2 MA's), (23, 71167), (26, 71218),

Gene: Superphikiman_131 Start: 70104, Stop: 70457, Start Num: 7

Candidate Starts for Superphikiman_131:

(Start: 7 @70104 has 11 MA's), (Start: 8 @70113 has 2 MA's), (23, 70383),

Gene: ToriToki_78 Start: 40176, Stop: 39655, Start Num: 3

Candidate Starts for ToriToki_78:

(Start: 3 @40176 has 7 MA's), (4, 40155), (6, 40128), (Start: 8 @40104 has 2 MA's), (11, 40029), (12, 40026), (13, 39999), (15, 39963), (18, 39933), (20, 39897), (21, 39885), (22, 39882), (27, 39744),

Gene: Yappy_107 Start: 55269, Stop: 54802, Start Num: 2

Candidate Starts for Yappy_107:

(1, 55377), (Start: 2 @55269 has 2 MA's), (10, 55164), (23, 54900),

Gene: ZooBear_78 Start: 40177, Stop: 39656, Start Num: 3

Candidate Starts for ZooBear_78:

(Start: 3 @40177 has 7 MA's), (4, 40156), (6, 40129), (Start: 8 @40105 has 2 MA's), (11, 40030), (12, 40027), (13, 40000), (15, 39964), (18, 39934), (20, 39898), (21, 39886), (22, 39883), (27, 39745),