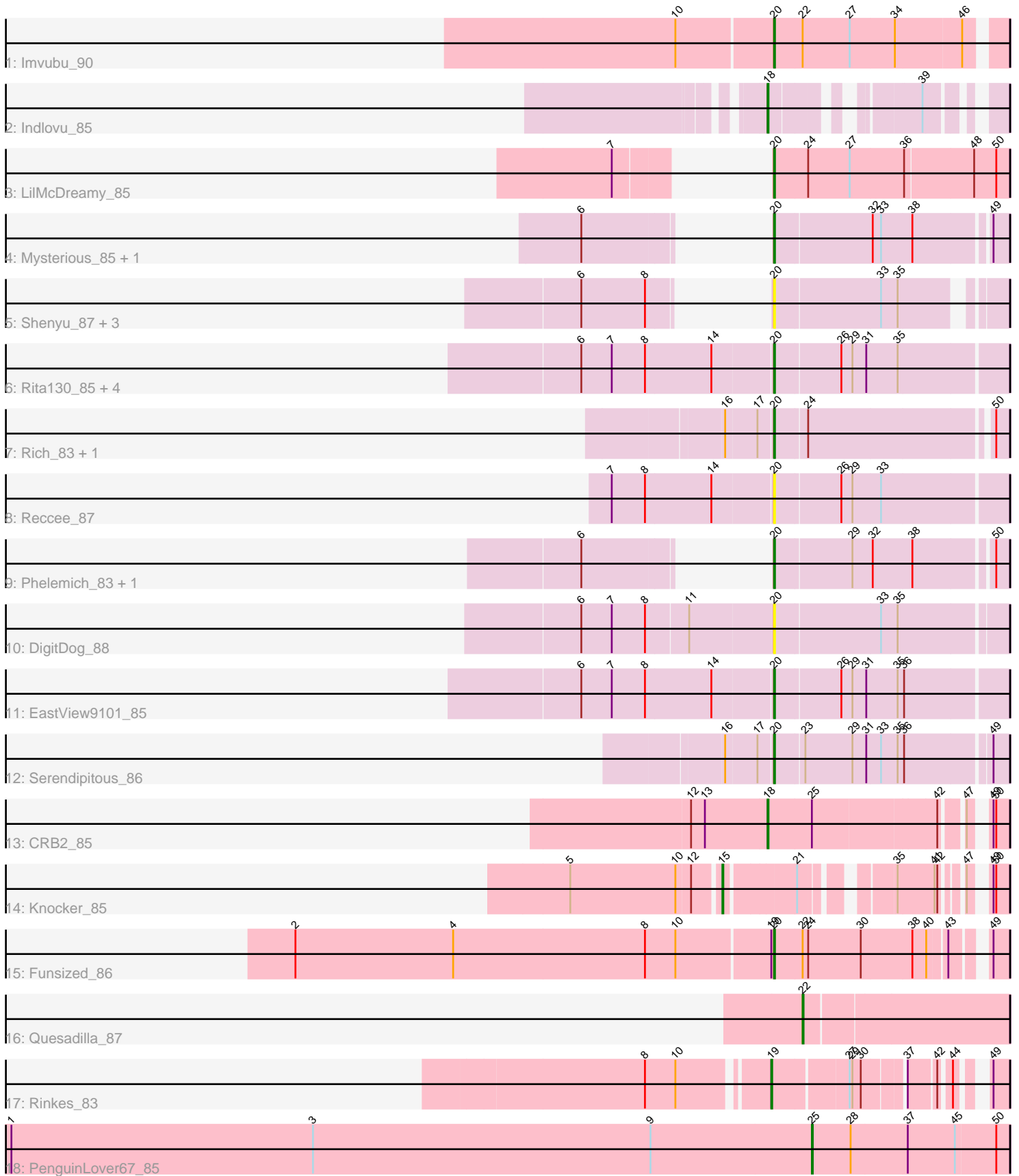


Pham 296828



Note: Tracks are now grouped by subcluster and scaled. Switching in subcluster is indicated by changes in track color. Track scale is now set by default to display the region 30 bp upstream of start 1 to 30 bp downstream of the last possible start. If this default region is judged to be packed too tightly with annotated starts, the track will be further scaled to only show that region of the ORF with annotated starts. This action will be indicated by adding "Zoomed" to the title. For starts, yellow indicates the location of called starts comprised solely of Glimmer/GeneMark auto-annotations, green indicates the location of called starts with at least 1 manual gene annotation.

Pham 296828 Report

This analysis was run 04/25/26 on database version 644.

Pham number 296828 has 28 members, 9 are drafts.

Phages represented in each track:

- Track 1 : Imvubu_90
- Track 2 : Indlovu_85
- Track 3 : LilMcDreamy_85
- Track 4 : Mysterious_85, Nehemiah_85
- Track 5 : Shenyu_87, Nangang_87, StinkyVeggy_84, KarasumaRum_84
- Track 6 : Rita130_85, Donny_86, Acadian_86, SirJeffery_84, Suigeneris_87
- Track 7 : Rich_83, Bae_84
- Track 8 : Reccee_87
- Track 9 : Phelemich_83, Reprobate_85
- Track 10 : DigitDog_88
- Track 11 : EastView9101_85
- Track 12 : Serendipitous_86
- Track 13 : CRB2_85
- Track 14 : Knocker_85
- Track 15 : Funsized_86
- Track 16 : Quesadilla_87
- Track 17 : Rinkes_83
- Track 18 : PenguinLover67_85

Summary of Final Annotations (See graph section above for start numbers):

The start number called the most often in the published annotations is 20, it was called in 13 of the 19 non-draft genes in the pham.

Genes that call this "Most Annotated" start:

- Acadian_86, Bae_84, DigitDog_88, Donny_86, EastView9101_85, Funsized_86, Imvubu_90, KarasumaRum_84, LilMcDreamy_85, Mysterious_85, Nangang_87, Nehemiah_85, Phelemich_83, Reccee_87, Reprobate_85, Rich_83, Rita130_85, Serendipitous_86, Shenyu_87, SirJeffery_84, StinkyVeggy_84, Suigeneris_87,

Genes that have the "Most Annotated" start but do not call it:

-

Genes that do not have the "Most Annotated" start:

- CRB2_85, Indlovu_85, Knocker_85, PenguinLover67_85, Quesadilla_87, Rinkes_83,

Summary by start number:

Start 15:

- Found in 1 of 28 (3.6%) of genes in pham
- Manual Annotations of this start: 1 of 19
- Called 100.0% of time when present
- Phage (with cluster) where this start called: Knocker_85 (B9),

Start 18:

- Found in 2 of 28 (7.1%) of genes in pham
- Manual Annotations of this start: 2 of 19
- Called 100.0% of time when present
- Phage (with cluster) where this start called: CRB2_85 (B9), Indlovu_85 (B11),

Start 19:

- Found in 2 of 28 (7.1%) of genes in pham
- Manual Annotations of this start: 1 of 19
- Called 50.0% of time when present
- Phage (with cluster) where this start called: Rinkes_83 (B9),

Start 20:

- Found in 22 of 28 (78.6%) of genes in pham
- Manual Annotations of this start: 13 of 19
- Called 100.0% of time when present
- Phage (with cluster) where this start called: Acadian_86 (B5), Bae_84 (B5), DigitDog_88 (B5), Donny_86 (B5), EastView9101_85 (B5), Funsized_86 (B9), Imvubu_90 (B10), KarasumaRum_84 (B5), LilMcDreamy_85 (B12), Mysterious_85 (B5), Nangang_87 (B5), Nehemiah_85 (B5), Phelemich_83 (B5), Reccee_87 (B5), Reprobate_85 (B5), Rich_83 (B5), Rita130_85 (B5), Serendipitous_86 (B5), Shenyu_87 (B5), SirJeffery_84 (B5), StinkyVeggy_84 (B5), Suigeneris_87 (B5),

Start 22:

- Found in 3 of 28 (10.7%) of genes in pham
- Manual Annotations of this start: 1 of 19
- Called 33.3% of time when present
- Phage (with cluster) where this start called: Quesadilla_87 (B9),

Start 25:

- Found in 2 of 28 (7.1%) of genes in pham
- Manual Annotations of this start: 1 of 19
- Called 50.0% of time when present
- Phage (with cluster) where this start called: PenguinLover67_85 (B9),

Summary by clusters:

There are 5 clusters represented in this pham: B5, B12, B9, B10, B11,

Info for manual annotations of cluster B10:

- Start number 20 was manually annotated 1 time for cluster B10.

Info for manual annotations of cluster B11:

- Start number 18 was manually annotated 1 time for cluster B11.

Info for manual annotations of cluster B12:

- Start number 20 was manually annotated 1 time for cluster B12.

Info for manual annotations of cluster B5:

- Start number 20 was manually annotated 10 times for cluster B5.

Info for manual annotations of cluster B9:

- Start number 15 was manually annotated 1 time for cluster B9.
- Start number 18 was manually annotated 1 time for cluster B9.
- Start number 19 was manually annotated 1 time for cluster B9.
- Start number 20 was manually annotated 1 time for cluster B9.
- Start number 22 was manually annotated 1 time for cluster B9.
- Start number 25 was manually annotated 1 time for cluster B9.

Gene Information:

Gene: Acadian_86 Start: 64696, Stop: 64454, Start Num: 20

Candidate Starts for Acadian_86:

(6, 64897), (7, 64864), (8, 64828), (14, 64759), (Start: 20 @64696 has 13 MA's), (26, 64627), (29, 64615), (31, 64600), (35, 64567),

Gene: Bae_84 Start: 65056, Stop: 64823, Start Num: 20

Candidate Starts for Bae_84:

(16, 65104), (17, 65071), (Start: 20 @65056 has 13 MA's), (24, 65023), (50, 64837),

Gene: CRB2_85 Start: 66826, Stop: 66605, Start Num: 18

Candidate Starts for CRB2_85:

(12, 66907), (13, 66892), (Start: 18 @66826 has 2 MA's), (Start: 25 @66781 has 1 MA's), (42, 66652), (47, 66634), (49, 66622), (50, 66619),

Gene: DigitDog_88 Start: 65196, Stop: 64957, Start Num: 20

Candidate Starts for DigitDog_88:

(6, 65397), (7, 65364), (8, 65328), (11, 65286), (Start: 20 @65196 has 13 MA's), (33, 65085), (35, 65067),

Gene: Donny_86 Start: 64530, Stop: 64288, Start Num: 20

Candidate Starts for Donny_86:

(6, 64731), (7, 64698), (8, 64662), (14, 64593), (Start: 20 @64530 has 13 MA's), (26, 64461), (29, 64449), (31, 64434), (35, 64401),

Gene: EastView9101_85 Start: 64441, Stop: 64199, Start Num: 20

Candidate Starts for EastView9101_85:

(6, 64642), (7, 64609), (8, 64573), (14, 64504), (Start: 20 @64441 has 13 MA's), (26, 64372), (29, 64360), (31, 64345), (35, 64312), (36, 64306),

Gene: Funsized_86 Start: 67570, Stop: 67346, Start Num: 20

Candidate Starts for Funsized_86:

(2, 68083), (4, 67912), (8, 67705), (10, 67672), (Start: 19 @67573 has 1 MA's), (Start: 20 @67570 has 13 MA's), (Start: 22 @67540 has 1 MA's), (24, 67534), (30, 67477), (38, 67423), (40, 67408), (43, 67390), (49, 67363),

Gene: Imvubu_90 Start: 65577, Stop: 65344, Start Num: 20

Candidate Starts for Imvubu_90:

(10, 65679), (Start: 20 @65577 has 13 MA's), (Start: 22 @65547 has 1 MA's), (27, 65496), (34, 65448), (46, 65379),

Gene: Indlovu_85 Start: 66174, Stop: 65995, Start Num: 18

Candidate Starts for Indlovu_85:

(Start: 18 @66174 has 2 MA's), (39, 66054),

Gene: KarasumaRum_84 Start: 64594, Stop: 64355, Start Num: 20

Candidate Starts for KarasumaRum_84:

(6, 64690), (8, 64621), (Start: 20 @64594 has 13 MA's), (33, 64483), (35, 64465),

Gene: Knocker_85 Start: 66543, Stop: 66316, Start Num: 15

Candidate Starts for Knocker_85:

(5, 66699), (10, 66585), (12, 66570), (Start: 15 @66543 has 1 MA's), (21, 66474), (35, 66402), (41, 66363), (42, 66360), (47, 66345), (49, 66333), (50, 66330),

Gene: LilMcDreamy_85 Start: 64982, Stop: 64734, Start Num: 20

Candidate Starts for LilMcDreamy_85:

(7, 65042), (Start: 20 @64982 has 13 MA's), (24, 64946), (27, 64901), (36, 64844), (48, 64772), (50, 64748),

Gene: Mysterious_85 Start: 64739, Stop: 64503, Start Num: 20

Candidate Starts for Mysterious_85:

(6, 64835), (Start: 20 @64739 has 13 MA's), (32, 64637), (33, 64628), (38, 64595), (49, 64520),

Gene: Nangang_87 Start: 65197, Stop: 64958, Start Num: 20

Candidate Starts for Nangang_87:

(6, 65293), (8, 65224), (Start: 20 @65197 has 13 MA's), (33, 65086), (35, 65068),

Gene: Nehemiah_85 Start: 64619, Stop: 64383, Start Num: 20

Candidate Starts for Nehemiah_85:

(6, 64715), (Start: 20 @64619 has 13 MA's), (32, 64517), (33, 64508), (38, 64475), (49, 64400),

Gene: PenguinLover67_85 Start: 64569, Stop: 64360, Start Num: 25

Candidate Starts for PenguinLover67_85:

(1, 65436), (3, 65109), (9, 64743), (Start: 25 @64569 has 1 MA's), (28, 64527), (37, 64467), (45, 64416), (50, 64374),

Gene: Phelemich_83 Start: 64664, Stop: 64428, Start Num: 20

Candidate Starts for Phelemich_83:

(6, 64760), (Start: 20 @64664 has 13 MA's), (29, 64583), (32, 64562), (38, 64520), (50, 64442),

Gene: Quesadilla_87 Start: 65727, Stop: 65512, Start Num: 22

Candidate Starts for Quesadilla_87:

(Start: 22 @65727 has 1 MA's),

Gene: Reccee_87 Start: 65000, Stop: 64758, Start Num: 20

Candidate Starts for Reccee_87:

(7, 65168), (8, 65132), (14, 65063), (Start: 20 @65000 has 13 MA's), (26, 64931), (29, 64919), (33, 64889),

Gene: Reprobate_85 Start: 64669, Stop: 64433, Start Num: 20

Candidate Starts for Reprobate_85:

(6, 64765), (Start: 20 @64669 has 13 MA's), (29, 64588), (32, 64567), (38, 64525), (50, 64447),

Gene: Rich_83 Start: 65123, Stop: 64890, Start Num: 20

Candidate Starts for Rich_83:

(16, 65171), (17, 65138), (Start: 20 @65123 has 13 MA's), (24, 65090), (50, 64904),

Gene: Rinkes_83 Start: 65423, Stop: 65226, Start Num: 19

Candidate Starts for Rinkes_83:

(8, 65543), (10, 65510), (Start: 19 @65423 has 1 MA's), (27, 65348), (29, 65345), (30, 65336), (37, 65297), (42, 65270), (44, 65261), (49, 65243),

Gene: Rita130_85 Start: 64670, Stop: 64428, Start Num: 20

Candidate Starts for Rita130_85:

(6, 64871), (7, 64838), (8, 64802), (14, 64733), (Start: 20 @64670 has 13 MA's), (26, 64601), (29, 64589), (31, 64574), (35, 64541),

Gene: Serendipitous_86 Start: 64542, Stop: 64303, Start Num: 20

Candidate Starts for Serendipitous_86:

(16, 64590), (17, 64557), (Start: 20 @64542 has 13 MA's), (23, 64512), (29, 64461), (31, 64446), (33, 64431), (35, 64413), (36, 64407), (49, 64320),

Gene: Shenyu_87 Start: 65195, Stop: 64974, Start Num: 20

Candidate Starts for Shenyu_87:

(6, 65291), (8, 65222), (Start: 20 @65195 has 13 MA's), (33, 65084), (35, 65066),

Gene: SirJeffery_84 Start: 64480, Stop: 64238, Start Num: 20

Candidate Starts for SirJeffery_84:

(6, 64681), (7, 64648), (8, 64612), (14, 64543), (Start: 20 @64480 has 13 MA's), (26, 64411), (29, 64399), (31, 64384), (35, 64351),

Gene: StinkyVeggy_84 Start: 64594, Stop: 64355, Start Num: 20

Candidate Starts for StinkyVeggy_84:

(6, 64690), (8, 64621), (Start: 20 @64594 has 13 MA's), (33, 64483), (35, 64465),

Gene: Suigeneris_87 Start: 64918, Stop: 64676, Start Num: 20

Candidate Starts for Suigeneris_87:

(6, 65119), (7, 65086), (8, 65050), (14, 64981), (Start: 20 @64918 has 13 MA's), (26, 64849), (29, 64837), (31, 64822), (35, 64789),