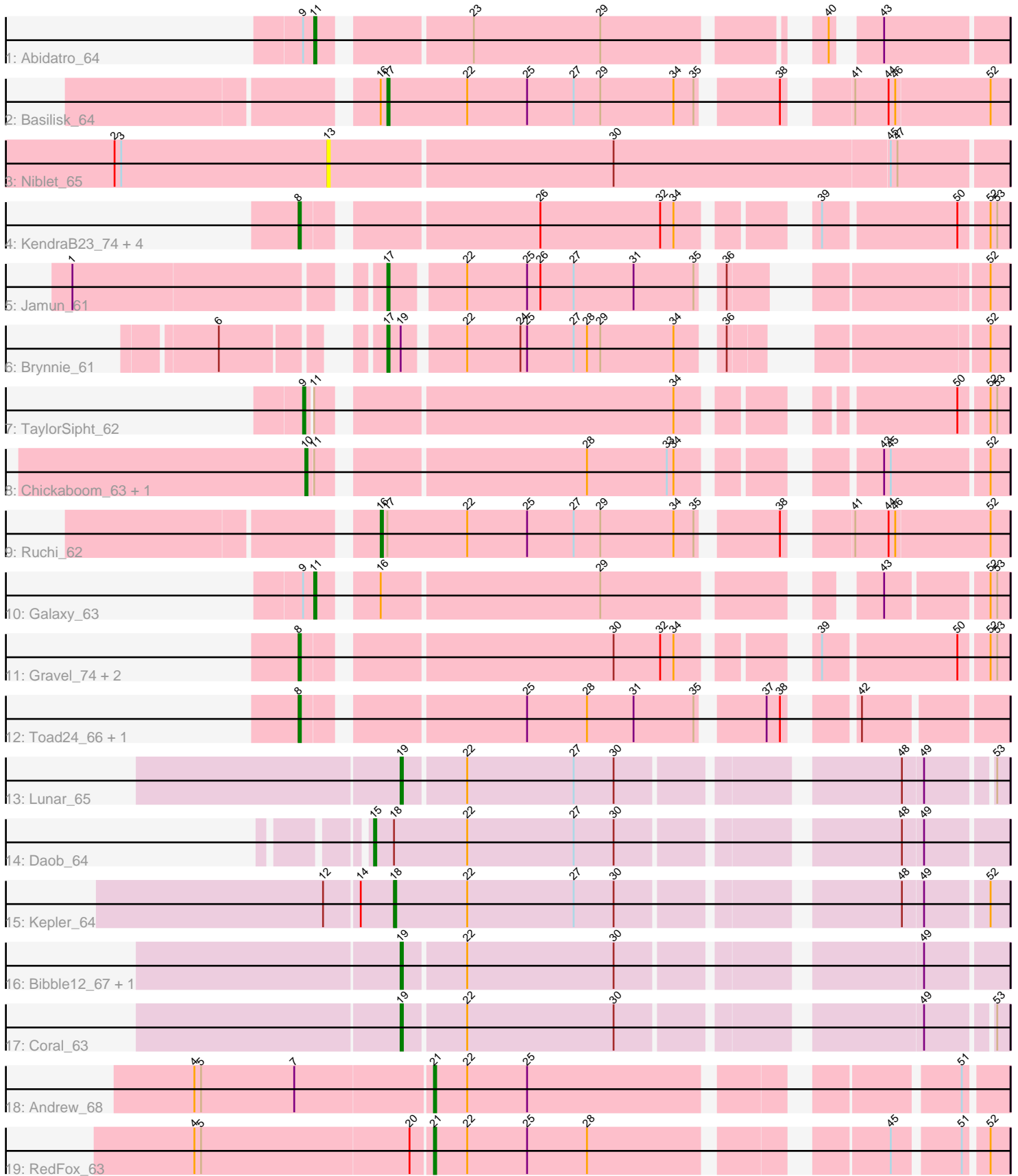


Pham 296842



Note: Tracks are now grouped by subcluster and scaled. Switching in subcluster is indicated by changes in track color. Track scale is now set by default to display the region 30 bp upstream of start 1 to 30 bp downstream of the last possible start. If this default region is judged to be packed too tightly with annotated starts, the track will be further scaled to only show that region of the ORF with annotated starts. This action will be indicated by adding "Zoomed" to the title. For starts, yellow indicates the location of called starts comprised solely of Glimmer/GeneMark auto-annotations, green indicates the location of called starts with at least 1 manual gene annotation.

Pham 296842 Report

This analysis was run 04/25/26 on database version 644.

Pham number 296842 has 28 members, 9 are drafts.

Phages represented in each track:

- Track 1 : Abidatro_64
- Track 2 : Basilisk_64
- Track 3 : Niblet_65
- Track 4 : KendraB23_74, Amanises_71, Zixiang_65, Shen_61, Eesa_63
- Track 5 : Jamun_61
- Track 6 : Brynnie_61
- Track 7 : TaylorSipht_62
- Track 8 : Chickaboom_63, WileyE_63
- Track 9 : Ruchi_62
- Track 10 : Galaxy_63
- Track 11 : Gravel_74, Pelletreau_74, Orcanus_63
- Track 12 : Toad24_66, Westrich_72
- Track 13 : Lunar_65
- Track 14 : Daob_64
- Track 15 : Kepler_64
- Track 16 : Bibble12_67, Cote_66
- Track 17 : Coral_63
- Track 18 : Andrew_68
- Track 19 : RedFox_63

Summary of Final Annotations (See graph section above for start numbers):

The start number called the most often in the published annotations is 8, it was called in 3 of the 19 non-draft genes in the pham.

Genes that call this "Most Annotated" start:

- Amanises_71, Eesa_63, Gravel_74, KendraB23_74, Orcanus_63, Pelletreau_74, Shen_61, Toad24_66, Westrich_72, Zixiang_65,

Genes that have the "Most Annotated" start but do not call it:

-

Genes that do not have the "Most Annotated" start:

- Abidatro_64, Andrew_68, Basilisk_64, Bibble12_67, Brynnie_61, Chickaboom_63, Coral_63, Cote_66, Daob_64, Galaxy_63, Jamun_61, Kepler_64, Lunar_65, Niblet_65, RedFox_63, Ruchi_62, TaylorSipht_62, WileyE_63,

Summary by start number:

Start 8:

- Found in 10 of 28 (35.7%) of genes in pham
- Manual Annotations of this start: 3 of 19
- Called 100.0% of time when present
- Phage (with cluster) where this start called: Amanises_71 (AS1), Eesa_63 (AS1), Gravel_74 (AS1), KendraB23_74 (AS1), Orcanus_63 (AS1), Pelletreau_74 (AS1), Shen_61 (AS1), Toad24_66 (AS1), Westrich_72 (AS1), Zixiang_65 (AS1),

Start 9:

- Found in 3 of 28 (10.7%) of genes in pham
- Manual Annotations of this start: 1 of 19
- Called 33.3% of time when present
- Phage (with cluster) where this start called: TaylorSipht_62 (AS1),

Start 10:

- Found in 2 of 28 (7.1%) of genes in pham
- Manual Annotations of this start: 2 of 19
- Called 100.0% of time when present
- Phage (with cluster) where this start called: Chickaboom_63 (AS1), WileyE_63 (AS1),

Start 11:

- Found in 5 of 28 (17.9%) of genes in pham
- Manual Annotations of this start: 2 of 19
- Called 40.0% of time when present
- Phage (with cluster) where this start called: Abidatro_64 (AS1), Galaxy_63 (AS1),

Start 13:

- Found in 1 of 28 (3.6%) of genes in pham
- No Manual Annotations of this start.
- Called 100.0% of time when present
- Phage (with cluster) where this start called: Niblet_65 (AS1),

Start 15:

- Found in 1 of 28 (3.6%) of genes in pham
- Manual Annotations of this start: 1 of 19
- Called 100.0% of time when present
- Phage (with cluster) where this start called: Daob_64 (AS2),

Start 16:

- Found in 3 of 28 (10.7%) of genes in pham
- Manual Annotations of this start: 1 of 19
- Called 33.3% of time when present
- Phage (with cluster) where this start called: Ruchi_62 (AS1),

Start 17:

- Found in 4 of 28 (14.3%) of genes in pham

- Manual Annotations of this start: 3 of 19
- Called 75.0% of time when present
- Phage (with cluster) where this start called: Basilisk_64 (AS1), Brynnie_61 (AS1), Jamun_61 (AS1),

Start 18:

- Found in 2 of 28 (7.1%) of genes in pham
- Manual Annotations of this start: 1 of 19
- Called 50.0% of time when present
- Phage (with cluster) where this start called: Kepler_64 (AS2),

Start 19:

- Found in 5 of 28 (17.9%) of genes in pham
- Manual Annotations of this start: 3 of 19
- Called 80.0% of time when present
- Phage (with cluster) where this start called: Bible12_67 (AS2), Coral_63 (AS2), Cote_66 (AS2), Lunar_65 (AS2),

Start 21:

- Found in 2 of 28 (7.1%) of genes in pham
- Manual Annotations of this start: 2 of 19
- Called 100.0% of time when present
- Phage (with cluster) where this start called: Andrew_68 (AS3), RedFox_63 (AS3),

Summary by clusters:

There are 3 clusters represented in this pham: AS3, AS2, AS1,

Info for manual annotations of cluster AS1:

- Start number 8 was manually annotated 3 times for cluster AS1.
- Start number 9 was manually annotated 1 time for cluster AS1.
- Start number 10 was manually annotated 2 times for cluster AS1.
- Start number 11 was manually annotated 2 times for cluster AS1.
- Start number 16 was manually annotated 1 time for cluster AS1.
- Start number 17 was manually annotated 3 times for cluster AS1.

Info for manual annotations of cluster AS2:

- Start number 15 was manually annotated 1 time for cluster AS2.
- Start number 18 was manually annotated 1 time for cluster AS2.
- Start number 19 was manually annotated 3 times for cluster AS2.

Info for manual annotations of cluster AS3:

- Start number 21 was manually annotated 2 times for cluster AS3.

Gene Information:

Gene: Abidatro_64 Start: 37871, Stop: 38137, Start Num: 11

Candidate Starts for Abidatro_64:

(Start: 9 @37868 has 1 MA's), (Start: 11 @37871 has 2 MA's), (23, 37931), (29, 37988), (40, 38069), (43, 38084),

Gene: Amanises_71 Start: 38734, Stop: 39012, Start Num: 8

Candidate Starts for Amanises_71:

(Start: 8 @38734 has 3 MA's), (26, 38830), (32, 38884), (34, 38890), (39, 38935), (50, 38992), (52, 39004), (53, 39007),

Gene: Andrew_68 Start: 37133, Stop: 37360, Start Num: 21

Candidate Starts for Andrew_68:

(4, 37028), (5, 37031), (7, 37073), (Start: 21 @37133 has 2 MA's), (22, 37148), (25, 37175), (51, 37343),

Gene: Basilisk_64 Start: 37561, Stop: 37818, Start Num: 17

Candidate Starts for Basilisk_64:

(Start: 16 @37558 has 1 MA's), (Start: 17 @37561 has 3 MA's), (22, 37597), (25, 37624), (27, 37645), (29, 37657), (34, 37690), (35, 37699), (38, 37729), (41, 37750), (44, 37765), (46, 37768), (52, 37810),

Gene: Bible12_67 Start: 36185, Stop: 36433, Start Num: 19

Candidate Starts for Bible12_67:

(Start: 19 @36185 has 3 MA's), (22, 36212), (30, 36278), (49, 36398),

Gene: Brynnie_61 Start: 37395, Stop: 37631, Start Num: 17

Candidate Starts for Brynnie_61:

(6, 37341), (Start: 17 @37395 has 3 MA's), (Start: 19 @37401 has 3 MA's), (22, 37425), (24, 37449), (25, 37452), (27, 37473), (28, 37479), (29, 37485), (34, 37518), (36, 37533), (52, 37623),

Gene: Chickaboom_63 Start: 37496, Stop: 37771, Start Num: 10

Candidate Starts for Chickaboom_63:

(Start: 10 @37496 has 2 MA's), (Start: 11 @37499 has 2 MA's), (28, 37610), (33, 37646), (34, 37649), (43, 37718), (45, 37721), (52, 37763),

Gene: Coral_63 Start: 36092, Stop: 36337, Start Num: 19

Candidate Starts for Coral_63:

(Start: 19 @36092 has 3 MA's), (22, 36119), (30, 36185), (49, 36305), (53, 36332),

Gene: Cote_66 Start: 36528, Stop: 36776, Start Num: 19

Candidate Starts for Cote_66:

(Start: 19 @36528 has 3 MA's), (22, 36555), (30, 36621), (49, 36741),

Gene: Daob_64 Start: 35856, Stop: 36119, Start Num: 15

Candidate Starts for Daob_64:

(Start: 15 @35856 has 1 MA's), (Start: 18 @35865 has 1 MA's), (22, 35898), (27, 35946), (30, 35964), (48, 36075), (49, 36084),

Gene: Eesa_63 Start: 38775, Stop: 39053, Start Num: 8

Candidate Starts for Eesa_63:

(Start: 8 @38775 has 3 MA's), (26, 38871), (32, 38925), (34, 38931), (39, 38976), (50, 39033), (52, 39045), (53, 39048),

Gene: Galaxy_63 Start: 36697, Stop: 36963, Start Num: 11

Candidate Starts for Galaxy_63:

(Start: 9 @36694 has 1 MA's), (Start: 11 @36697 has 2 MA's), (Start: 16 @36718 has 1 MA's), (29, 36814), (43, 36913), (52, 36955), (53, 36958),

Gene: Gravel_74 Start: 39031, Stop: 39309, Start Num: 8

Candidate Starts for Gravel_74:

(Start: 8 @39031 has 3 MA's), (30, 39160), (32, 39181), (34, 39187), (39, 39232), (50, 39289), (52, 39301), (53, 39304),

Gene: Jamun_61 Start: 37765, Stop: 38004, Start Num: 17

Candidate Starts for Jamun_61:

(1, 37639), (Start: 17 @37765 has 3 MA's), (22, 37795), (25, 37822), (26, 37828), (27, 37843), (31, 37870), (35, 37897), (36, 37903), (52, 37996),

Gene: KendraB23_74 Start: 38736, Stop: 39014, Start Num: 8

Candidate Starts for KendraB23_74:

(Start: 8 @38736 has 3 MA's), (26, 38832), (32, 38886), (34, 38892), (39, 38937), (50, 38994), (52, 39006), (53, 39009),

Gene: Kepler_64 Start: 35869, Stop: 36123, Start Num: 18

Candidate Starts for Kepler_64:

(12, 35839), (14, 35854), (Start: 18 @35869 has 1 MA's), (22, 35902), (27, 35950), (30, 35968), (48, 36079), (49, 36088), (52, 36115),

Gene: Lunar_65 Start: 36215, Stop: 36460, Start Num: 19

Candidate Starts for Lunar_65:

(Start: 19 @36215 has 3 MA's), (22, 36242), (27, 36290), (30, 36308), (48, 36419), (49, 36428), (53, 36455),

Gene: Niblet_65 Start: 37971, Stop: 38270, Start Num: 13

Candidate Starts for Niblet_65:

(2, 37875), (3, 37878), (13, 37971), (30, 38097), (45, 38220), (47, 38223),

Gene: Orcanus_63 Start: 38262, Stop: 38540, Start Num: 8

Candidate Starts for Orcanus_63:

(Start: 8 @38262 has 3 MA's), (30, 38391), (32, 38412), (34, 38418), (39, 38463), (50, 38520), (52, 38532), (53, 38535),

Gene: Pelletreau_74 Start: 39031, Stop: 39309, Start Num: 8

Candidate Starts for Pelletreau_74:

(Start: 8 @39031 has 3 MA's), (30, 39160), (32, 39181), (34, 39187), (39, 39232), (50, 39289), (52, 39301), (53, 39304),

Gene: RedFox_63 Start: 36679, Stop: 36906, Start Num: 21

Candidate Starts for RedFox_63:

(4, 36574), (5, 36577), (20, 36670), (Start: 21 @36679 has 2 MA's), (22, 36694), (25, 36721), (28, 36748), (45, 36862), (51, 36889), (52, 36898),

Gene: Ruchi_62 Start: 37480, Stop: 37740, Start Num: 16

Candidate Starts for Ruchi_62:

(Start: 16 @37480 has 1 MA's), (Start: 17 @37483 has 3 MA's), (22, 37519), (25, 37546), (27, 37567), (29, 37579), (34, 37612), (35, 37621), (38, 37651), (41, 37672), (44, 37687), (46, 37690), (52, 37732),

Gene: Shen_61 Start: 36648, Stop: 36926, Start Num: 8

Candidate Starts for Shen_61:

(Start: 8 @36648 has 3 MA's), (26, 36744), (32, 36798), (34, 36804), (39, 36849), (50, 36906), (52, 36918), (53, 36921),

Gene: TaylorSipht_62 Start: 37850, Stop: 38122, Start Num: 9

Candidate Starts for TaylorSipht_62:

(Start: 9 @37850 has 1 MA's), (Start: 11 @37853 has 2 MA's), (34, 38003), (50, 38102), (52, 38114), (53, 38117),

Gene: Toad24_66 Start: 38788, Stop: 39063, Start Num: 8

Candidate Starts for Toad24_66:

(Start: 8 @38788 has 3 MA's), (25, 38878), (28, 38905), (31, 38926), (35, 38953), (37, 38977), (38, 38983), (42, 39004),

Gene: Westrich_72 Start: 38955, Stop: 39230, Start Num: 8

Candidate Starts for Westrich_72:

(Start: 8 @38955 has 3 MA's), (25, 39045), (28, 39072), (31, 39093), (35, 39120), (37, 39144), (38, 39150), (42, 39171),

Gene: WileyE_63 Start: 37496, Stop: 37771, Start Num: 10

Candidate Starts for WileyE_63:

(Start: 10 @37496 has 2 MA's), (Start: 11 @37499 has 2 MA's), (28, 37610), (33, 37646), (34, 37649), (43, 37718), (45, 37721), (52, 37763),

Gene: Zixiang_65 Start: 38152, Stop: 38430, Start Num: 8

Candidate Starts for Zixiang_65:

(Start: 8 @38152 has 3 MA's), (26, 38248), (32, 38302), (34, 38308), (39, 38353), (50, 38410), (52, 38422), (53, 38425),