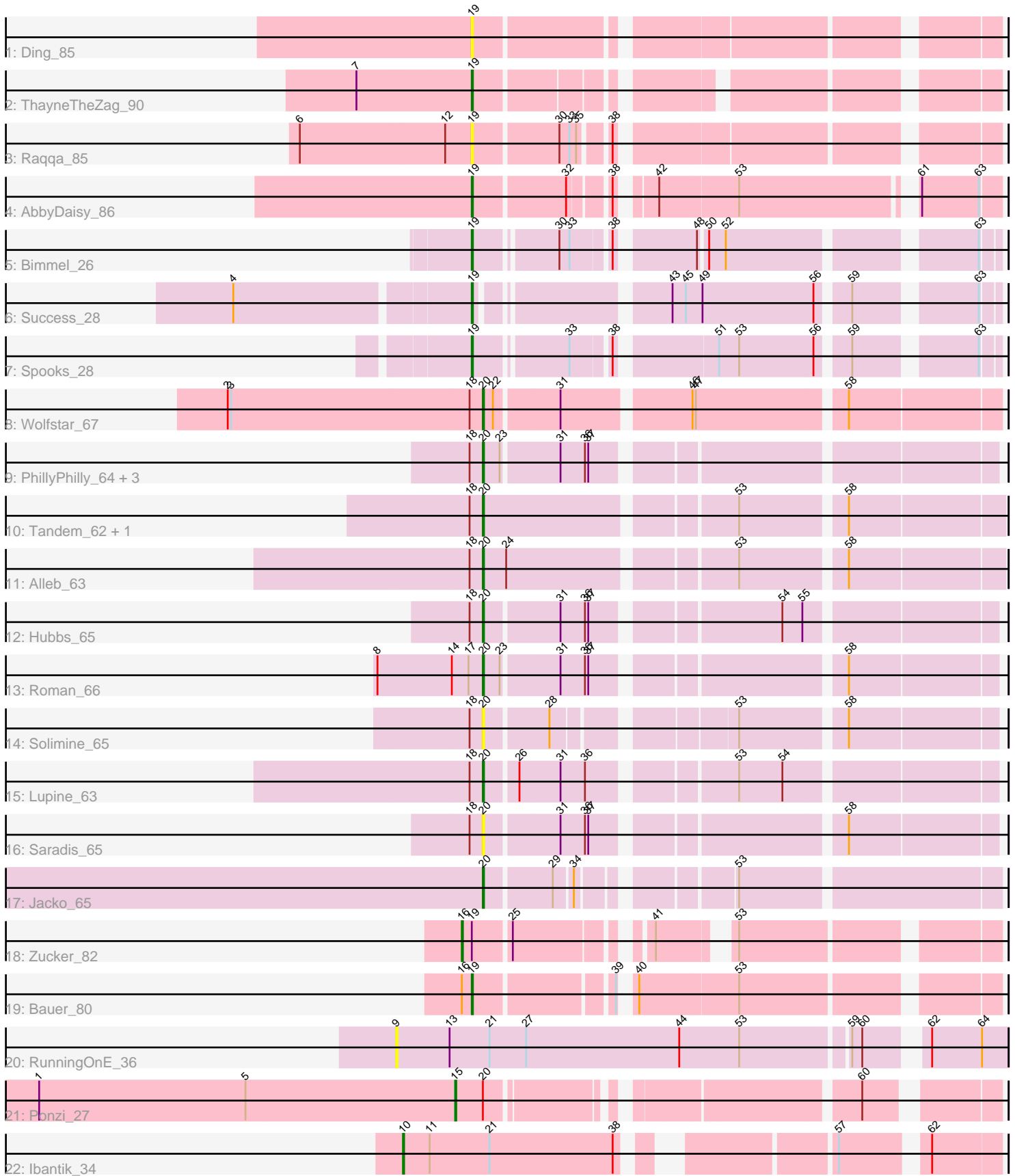


Pham 296848



Note: Tracks are now grouped by subcluster and scaled. Switching in subcluster is indicated by changes in track color. Track scale is now set by default to display the region 30 bp upstream of start 1 to 30 bp downstream of the last possible start. If this default region is judged to be packed too tightly with annotated starts, the track will be further scaled to only show that region of the ORF with annotated starts. This action will be indicated by adding "Zoomed" to the title. For starts, yellow indicates the location of called starts comprised solely of Glimmer/GeneMark auto-annotations, green indicates the location of called starts with at least 1 manual gene annotation.

Pham 296848 Report

This analysis was run 04/25/26 on database version 644.

WARNING: Pham size does not match number of genes in report. Either unphamerated genes have been added (by you) or starterator has removed genes due to invalid start codon.

Pham number 296848 has 26 members, 6 are drafts.

Phages represented in each track:

- Track 1 : Ding_85
- Track 2 : ThayneTheZag_90
- Track 3 : Raqqa_85
- Track 4 : AbbyDaisy_86
- Track 5 : Bimmel_26
- Track 6 : Success_28
- Track 7 : Spooks_28
- Track 8 : Wolfstar_67
- Track 9 : PhillyPhilly_64, DejaVu_66, Uterion_67, Pavlo_64
- Track 10 : Tandem_62, Pioneer3_62
- Track 11 : Alleb_63
- Track 12 : Hubbs_65
- Track 13 : Roman_66
- Track 14 : Solimine_65
- Track 15 : Lupine_63
- Track 16 : Saradis_65
- Track 17 : Jacko_65
- Track 18 : Zucker_82
- Track 19 : Bauer_80
- Track 20 : RunningOnE_36
- Track 21 : Ponzi_27
- Track 22 : Ibantik_34

Summary of Final Annotations (See graph section above for start numbers):

The start number called the most often in the published annotations is 20, it was called in 11 of the 20 non-draft genes in the pham.

Genes that call this "Most Annotated" start:

- Alleb_63, DejaVu_66, Hubbs_65, Jacko_65, Lupine_63, Pavlo_64, PhillyPhilly_64, Pioneer3_62, Roman_66, Saradis_65, Solimine_65, Tandem_62, Uterion_67, Wolfstar_67,

Genes that have the "Most Annotated" start but do not call it:

- Ponzi_27,

Genes that do not have the "Most Annotated" start:

- AbbyDaisy_86, Bauer_80, Bimmel_26, Ding_85, Ibantik_34, Raqqa_85, RunningOnE_36, Spooks_28, Success_28, ThayneTheZag_90, Zucker_82,

Summary by start number:

Start 9:

- Found in 1 of 26 (3.8%) of genes in pham
- No Manual Annotations of this start.
- Called 100.0% of time when present
- Phage (with cluster) where this start called: RunningOnE_36 (UNK),

Start 10:

- Found in 1 of 26 (3.8%) of genes in pham
- Manual Annotations of this start: 1 of 20
- Called 100.0% of time when present
- Phage (with cluster) where this start called: Ibantik_34 (singleton),

Start 15:

- Found in 1 of 26 (3.8%) of genes in pham
- Manual Annotations of this start: 1 of 20
- Called 100.0% of time when present
- Phage (with cluster) where this start called: Ponzi_27 (singleton),

Start 16:

- Found in 2 of 26 (7.7%) of genes in pham
- Manual Annotations of this start: 1 of 20
- Called 50.0% of time when present
- Phage (with cluster) where this start called: Zucker_82 (FN),

Start 19:

- Found in 9 of 26 (34.6%) of genes in pham
- Manual Annotations of this start: 6 of 20
- Called 88.9% of time when present
- Phage (with cluster) where this start called: AbbyDaisy_86 (AY), Bauer_80 (FN), Bimmel_26 (BT), Ding_85 (AY), Raqqa_85 (AY), Spooks_28 (BT), Success_28 (BT), ThayneTheZag_90 (AY),

Start 20:

- Found in 15 of 26 (57.7%) of genes in pham
- Manual Annotations of this start: 11 of 20
- Called 93.3% of time when present
- Phage (with cluster) where this start called: Alleb_63 (ED1), DejaVu_66 (ED1), Hubbs_65 (ED1), Jacko_65 (ED1), Lupine_63 (ED1), Pavlo_64 (ED1), PhillyPhilly_64 (ED1), Pioneer3_62 (ED1), Roman_66 (ED1), Saradis_65 (ED1), Solimine_65 (ED1), Tandem_62 (ED1), Uterion_67 (ED1), Wolfstar_67 (ED),

Summary by clusters:

There are 7 clusters represented in this pham: singleton, ED, BT, ED1, AY, UNK, FN,

Info for manual annotations of cluster AY:

- Start number 19 was manually annotated 2 times for cluster AY.

Info for manual annotations of cluster BT:

- Start number 19 was manually annotated 3 times for cluster BT.

Info for manual annotations of cluster ED:

- Start number 20 was manually annotated 1 time for cluster ED.

Info for manual annotations of cluster ED1:

- Start number 20 was manually annotated 10 times for cluster ED1.

Info for manual annotations of cluster FN:

- Start number 16 was manually annotated 1 time for cluster FN.
- Start number 19 was manually annotated 1 time for cluster FN.

Gene Information:

Gene: AbbyDaisy_86 Start: 49683, Stop: 50093, Start Num: 19

Candidate Starts for AbbyDaisy_86:

(Start: 19 @49683 has 6 MA's), (32, 49761), (38, 49791), (42, 49815), (53, 49884), (61, 50025), (63, 50076),

Gene: Alleb_63 Start: 38335, Stop: 37907, Start Num: 20

Candidate Starts for Alleb_63:

(18, 38347), (Start: 20 @38335 has 11 MA's), (24, 38314), (53, 38128), (58, 38041),

Gene: Bauer_80 Start: 44429, Stop: 44842, Start Num: 19

Candidate Starts for Bauer_80:

(Start: 16 @44420 has 1 MA's), (Start: 19 @44429 has 6 MA's), (39, 44540), (40, 44546), (53, 44633),

Gene: Bimmel_26 Start: 18034, Stop: 17636, Start Num: 19

Candidate Starts for Bimmel_26:

(Start: 19 @18034 has 6 MA's), (30, 17968), (33, 17959), (38, 17929), (48, 17869), (50, 17863), (52, 17848), (63, 17650),

Gene: DejaVu_66 Start: 38300, Stop: 37887, Start Num: 20

Candidate Starts for DejaVu_66:

(18, 38312), (Start: 20 @38300 has 11 MA's), (23, 38285), (31, 38237), (36, 38216), (37, 38213),

Gene: Ding_85 Start: 46926, Stop: 47342, Start Num: 19

Candidate Starts for Ding_85:

(Start: 19 @46926 has 6 MA's),

Gene: Hubbs_65 Start: 38508, Stop: 38095, Start Num: 20

Candidate Starts for Hubbs_65:

(18, 38520), (Start: 20 @38508 has 11 MA's), (31, 38445), (36, 38424), (37, 38421), (54, 38271), (55, 38253),

Gene: Ibantik_34 Start: 16596, Stop: 16135, Start Num: 10

Candidate Starts for Ibantik_34:

(Start: 10 @16596 has 1 MA's), (11, 16572), (21, 16518), (38, 16407), (57, 16260), (62, 16194),

Gene: Jacko_65 Start: 37248, Stop: 36841, Start Num: 20

Candidate Starts for Jacko_65:

(Start: 20 @37248 has 11 MA's), (29, 37191), (34, 37176), (53, 37062),

Gene: Lupine_63 Start: 37714, Stop: 37301, Start Num: 20

Candidate Starts for Lupine_63:

(18, 37726), (Start: 20 @37714 has 11 MA's), (26, 37687), (31, 37651), (36, 37630), (53, 37516), (54, 37477),

Gene: Pavlo_64 Start: 38359, Stop: 37946, Start Num: 20

Candidate Starts for Pavlo_64:

(18, 38371), (Start: 20 @38359 has 11 MA's), (23, 38344), (31, 38296), (36, 38275), (37, 38272),

Gene: PhillyPhilly_64 Start: 37893, Stop: 37480, Start Num: 20

Candidate Starts for PhillyPhilly_64:

(18, 37905), (Start: 20 @37893 has 11 MA's), (23, 37878), (31, 37830), (36, 37809), (37, 37806),

Gene: Pioneer3_62 Start: 38332, Stop: 37904, Start Num: 20

Candidate Starts for Pioneer3_62:

(18, 38344), (Start: 20 @38332 has 11 MA's), (53, 38125), (58, 38038),

Gene: Ponzi_27 Start: 16304, Stop: 15894, Start Num: 15

Candidate Starts for Ponzi_27:

(1, 16676), (5, 16490), (Start: 15 @16304 has 1 MA's), (Start: 20 @16280 has 11 MA's), (60, 15995),

Gene: Raqqa_85 Start: 47700, Stop: 48110, Start Num: 19

Candidate Starts for Raqqa_85:

(6, 47547), (12, 47676), (Start: 19 @47700 has 6 MA's), (30, 47772), (33, 47781), (35, 47787), (38, 47808),

Gene: Roman_66 Start: 38562, Stop: 38149, Start Num: 20

Candidate Starts for Roman_66:

(8, 38655), (14, 38589), (17, 38574), (Start: 20 @38562 has 11 MA's), (23, 38547), (31, 38499), (36, 38478), (37, 38475), (58, 38277),

Gene: RunningOnE_36 Start: 16622, Stop: 16104, Start Num: 9

Candidate Starts for RunningOnE_36:

(9, 16622), (13, 16574), (21, 16538), (27, 16505), (44, 16367), (53, 16313), (59, 16223), (60, 16214), (62, 16172), (64, 16127),

Gene: Saradis_65 Start: 37952, Stop: 37539, Start Num: 20

Candidate Starts for Saradis_65:

(18, 37964), (Start: 20 @37952 has 11 MA's), (31, 37889), (36, 37868), (37, 37865), (58, 37667),

Gene: Solimine_65 Start: 38360, Stop: 37953, Start Num: 20

Candidate Starts for Solimine_65:

(18, 38372), (Start: 20 @38360 has 11 MA's), (28, 38306), (53, 38168), (58, 38081),

Gene: Spooks_28 Start: 19049, Stop: 18648, Start Num: 19

Candidate Starts for Spooks_28:

(Start: 19 @19049 has 6 MA's), (33, 18974), (38, 18944), (51, 18866), (53, 18848), (56, 18782), (59, 18758), (63, 18662),

Gene: Success_28 Start: 18270, Stop: 17863, Start Num: 19

Candidate Starts for Success_28:

(4, 18471), (Start: 19 @18270 has 6 MA's), (43, 18123), (45, 18111), (49, 18096), (56, 17997), (59, 17973), (63, 17877),

Gene: Tandem_62 Start: 38430, Stop: 38002, Start Num: 20

Candidate Starts for Tandem_62:

(18, 38442), (Start: 20 @38430 has 11 MA's), (53, 38223), (58, 38136),

Gene: ThayneTheZag_90 Start: 48316, Stop: 48714, Start Num: 19

Candidate Starts for ThayneTheZag_90:

(7, 48217), (Start: 19 @48316 has 6 MA's),

Gene: Uterion_67 Start: 38461, Stop: 38048, Start Num: 20

Candidate Starts for Uterion_67:

(18, 38473), (Start: 20 @38461 has 11 MA's), (23, 38446), (31, 38398), (36, 38377), (37, 38374),

Gene: Wolfstar_67 Start: 39602, Stop: 39174, Start Num: 20

Candidate Starts for Wolfstar_67:

(2, 39830), (3, 39827), (18, 39614), (Start: 20 @39602 has 11 MA's), (22, 39593), (31, 39539), (46, 39434), (47, 39431), (58, 39305),

Gene: Zucker_82 Start: 48335, Stop: 48733, Start Num: 16

Candidate Starts for Zucker_82:

(Start: 16 @48335 has 1 MA's), (Start: 19 @48344 has 6 MA's), (25, 48374), (41, 48473), (53, 48524),