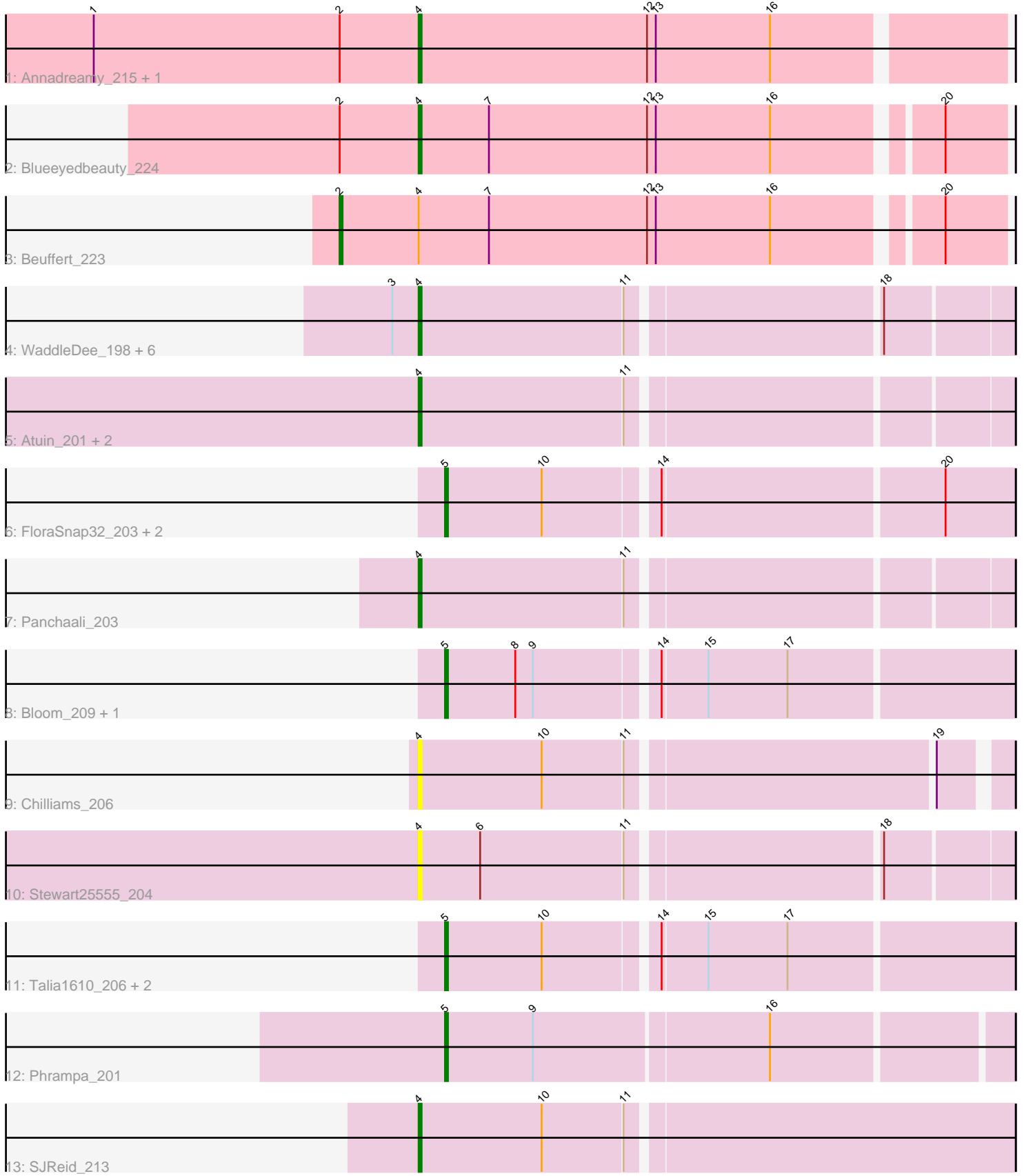


Pham 296855



Note: Tracks are now grouped by subcluster and scaled. Switching in subcluster is indicated by changes in track color. Track scale is now set by default to display the region 30 bp upstream of start 1 to 30 bp downstream of the last possible start. If this default region is judged to be packed too tightly with annotated starts, the track will be further scaled to only show that region of the ORF with annotated starts. This action will be indicated by adding "Zoomed" to the title. For starts, yellow indicates the location of called starts comprised solely of Glimmer/GeneMark auto-annotations, green indicates the location of called starts with at least 1 manual gene annotation.

Pham 296855 Report

This analysis was run 04/25/26 on database version 644.

Pham number 296855 has 27 members, 11 are drafts.

Phages represented in each track:

- Track 1 : Annadreamy_215, Limpid_222
- Track 2 : Blueeyedbeauty_224
- Track 3 : Beuffert_223
- Track 4 : WaddleDee_198, DunneganBoMo_203, Emmetator_206, Ellewin_201, KSunshine22_206, BooTeria_211, Artu_204
- Track 5 : Atuin_201, ReginaGlobina_213, LeoJr_210
- Track 6 : FloraSnap32_203, Patbob_202, GoldenEssence_193
- Track 7 : Panchaali_203
- Track 8 : Bloom_209, Racecar_206
- Track 9 : Chilliams_206
- Track 10 : Stewart25555_204
- Track 11 : Talia1610_206, Mimi_204, FrostedClock_208
- Track 12 : Phrampa_201
- Track 13 : SJReid_213

Summary of Final Annotations (See graph section above for start numbers):

The start number called the most often in the published annotations is 4, it was called in 9 of the 16 non-draft genes in the pham.

Genes that call this "Most Annotated" start:

- Annadreamy_215, Artu_204, Atuin_201, Blueeyedbeauty_224, BooTeria_211, Chilliams_206, DunneganBoMo_203, Ellewin_201, Emmetator_206, KSunshine22_206, LeoJr_210, Limpid_222, Panchaali_203, ReginaGlobina_213, SJReid_213, Stewart25555_204, WaddleDee_198,

Genes that have the "Most Annotated" start but do not call it:

- Beuffert_223,

Genes that do not have the "Most Annotated" start:

- Bloom_209, FloraSnap32_203, FrostedClock_208, GoldenEssence_193, Mimi_204, Patbob_202, Phrampa_201, Racecar_206, Talia1610_206,

Summary by start number:

Start 2:

- Found in 4 of 27 (14.8%) of genes in pham
- Manual Annotations of this start: 1 of 16
- Called 25.0% of time when present
- Phage (with cluster) where this start called: Beuffert_223 (BK1),

Start 4:

- Found in 18 of 27 (66.7%) of genes in pham
- Manual Annotations of this start: 9 of 16
- Called 94.4% of time when present
- Phage (with cluster) where this start called: Annadreamy_215 (BK1), Artu_204 (FC), Atuin_201 (FC), Blueeyedbeauty_224 (BK1), BooTeria_211 (FC), Chilliams_206 (FC), DunneganBoMo_203 (FC), Ellewin_201 (FC), Emmetator_206 (FC), KSunshine22_206 (FC), LeoJr_210 (FC), Limpid_222 (BK1), Panchaali_203 (FC), ReginaGlobina_213 (FC), SJReid_213 (FC), Stewart25555_204 (FC), WaddleDee_198 (FC),

Start 5:

- Found in 9 of 27 (33.3%) of genes in pham
- Manual Annotations of this start: 6 of 16
- Called 100.0% of time when present
- Phage (with cluster) where this start called: Bloom_209 (FC), FloraSnap32_203 (FC), FrostedClock_208 (FC), GoldenEssence_193 (FC), Mimi_204 (FC), Patbob_202 (FC), Phrampa_201 (FC), Racecar_206 (FC), Talia1610_206 (FC),

Summary by clusters:

There are 2 clusters represented in this pham: FC, BK1,

Info for manual annotations of cluster BK1:

- Start number 2 was manually annotated 1 time for cluster BK1.
- Start number 4 was manually annotated 3 times for cluster BK1.

Info for manual annotations of cluster FC:

- Start number 4 was manually annotated 6 times for cluster FC.
- Start number 5 was manually annotated 6 times for cluster FC.

Gene Information:

Gene: Annadreamy_215 Start: 106855, Stop: 107049, Start Num: 4

Candidate Starts for Annadreamy_215:

(1, 106744), (Start: 2 @106828 has 1 MA's), (Start: 4 @106855 has 9 MA's), (12, 106933), (13, 106936), (16, 106975),

Gene: Artu_204 Start: 148044, Stop: 148235, Start Num: 4

Candidate Starts for Artu_204:

(3, 148035), (Start: 4 @148044 has 9 MA's), (11, 148113), (18, 148194),

Gene: Atuin_201 Start: 141205, Stop: 141396, Start Num: 4

Candidate Starts for Atuin_201:

(Start: 4 @141205 has 9 MA's), (11, 141274),

Gene: Beuffert_223 Start: 110989, Stop: 111207, Start Num: 2

Candidate Starts for Beuffert_223:

(Start: 2 @110989 has 1 MA's), (Start: 4 @111016 has 9 MA's), (7, 111040), (12, 111094), (13, 111097), (16, 111136), (20, 111187),

Gene: Bloom_209 Start: 142256, Stop: 142441, Start Num: 5

Candidate Starts for Bloom_209:

(Start: 5 @142256 has 6 MA's), (8, 142280), (9, 142286), (14, 142325), (15, 142340), (17, 142367),

Gene: Blueeyedbeauty_224 Start: 110552, Stop: 110743, Start Num: 4

Candidate Starts for Blueeyedbeauty_224:

(Start: 2 @110525 has 1 MA's), (Start: 4 @110552 has 9 MA's), (7, 110576), (12, 110630), (13, 110633), (16, 110672), (20, 110723),

Gene: BooTeria_211 Start: 147554, Stop: 147745, Start Num: 4

Candidate Starts for BooTeria_211:

(3, 147545), (Start: 4 @147554 has 9 MA's), (11, 147623), (18, 147704),

Gene: Chilliams_206 Start: 139068, Stop: 139256, Start Num: 4

Candidate Starts for Chilliams_206:

(Start: 4 @139068 has 9 MA's), (10, 139110), (11, 139137), (19, 139236),

Gene: DunneganBoMo_203 Start: 147018, Stop: 147209, Start Num: 4

Candidate Starts for DunneganBoMo_203:

(3, 147009), (Start: 4 @147018 has 9 MA's), (11, 147087), (18, 147168),

Gene: Ellewin_201 Start: 146285, Stop: 146476, Start Num: 4

Candidate Starts for Ellewin_201:

(3, 146276), (Start: 4 @146285 has 9 MA's), (11, 146354), (18, 146435),

Gene: Emmetator_206 Start: 146414, Stop: 146605, Start Num: 4

Candidate Starts for Emmetator_206:

(3, 146405), (Start: 4 @146414 has 9 MA's), (11, 146483), (18, 146564),

Gene: FloraSnap32_203 Start: 140849, Stop: 141034, Start Num: 5

Candidate Starts for FloraSnap32_203:

(Start: 5 @140849 has 6 MA's), (10, 140882), (14, 140918), (20, 141011),

Gene: FrostedClock_208 Start: 142177, Stop: 142362, Start Num: 5

Candidate Starts for FrostedClock_208:

(Start: 5 @142177 has 6 MA's), (10, 142210), (14, 142246), (15, 142261), (17, 142288),

Gene: GoldenEssence_193 Start: 136223, Stop: 136408, Start Num: 5

Candidate Starts for GoldenEssence_193:

(Start: 5 @136223 has 6 MA's), (10, 136256), (14, 136292), (20, 136385),

Gene: KSunshine22_206 Start: 145696, Stop: 145887, Start Num: 4

Candidate Starts for KSunshine22_206:

(3, 145687), (Start: 4 @145696 has 9 MA's), (11, 145765), (18, 145846),

Gene: LeoJr_210 Start: 141376, Stop: 141567, Start Num: 4

Candidate Starts for LeoJr_210:
(Start: 4 @141376 has 9 MA's), (11, 141445),

Gene: Limpid_222 Start: 112168, Stop: 112362, Start Num: 4
Candidate Starts for Limpid_222:
(1, 112057), (Start: 2 @112141 has 1 MA's), (Start: 4 @112168 has 9 MA's), (12, 112246), (13, 112249), (16, 112288),

Gene: Mimi_204 Start: 141632, Stop: 141817, Start Num: 5
Candidate Starts for Mimi_204:
(Start: 5 @141632 has 6 MA's), (10, 141665), (14, 141701), (15, 141716), (17, 141743),

Gene: Panchaali_203 Start: 147624, Stop: 147815, Start Num: 4
Candidate Starts for Panchaali_203:
(Start: 4 @147624 has 9 MA's), (11, 147693),

Gene: Patbob_202 Start: 142019, Stop: 142204, Start Num: 5
Candidate Starts for Patbob_202:
(Start: 5 @142019 has 6 MA's), (10, 142052), (14, 142088), (20, 142181),

Gene: Phrampa_201 Start: 142850, Stop: 143035, Start Num: 5
Candidate Starts for Phrampa_201:
(Start: 5 @142850 has 6 MA's), (9, 142880), (16, 142958),

Gene: Racecar_206 Start: 142012, Stop: 142197, Start Num: 5
Candidate Starts for Racecar_206:
(Start: 5 @142012 has 6 MA's), (8, 142036), (9, 142042), (14, 142081), (15, 142096), (17, 142123),

Gene: ReginaGlobina_213 Start: 142661, Stop: 142852, Start Num: 4
Candidate Starts for ReginaGlobina_213:
(Start: 4 @142661 has 9 MA's), (11, 142730),

Gene: SJReid_213 Start: 136599, Stop: 136796, Start Num: 4
Candidate Starts for SJReid_213:
(Start: 4 @136599 has 9 MA's), (10, 136641), (11, 136668),

Gene: Stewart25555_204 Start: 144933, Stop: 145124, Start Num: 4
Candidate Starts for Stewart25555_204:
(Start: 4 @144933 has 9 MA's), (6, 144954), (11, 145002), (18, 145083),

Gene: Talia1610_206 Start: 142041, Stop: 142226, Start Num: 5
Candidate Starts for Talia1610_206:
(Start: 5 @142041 has 6 MA's), (10, 142074), (14, 142110), (15, 142125), (17, 142152),

Gene: WaddleDee_198 Start: 145479, Stop: 145670, Start Num: 4
Candidate Starts for WaddleDee_198:
(3, 145470), (Start: 4 @145479 has 9 MA's), (11, 145548), (18, 145629),