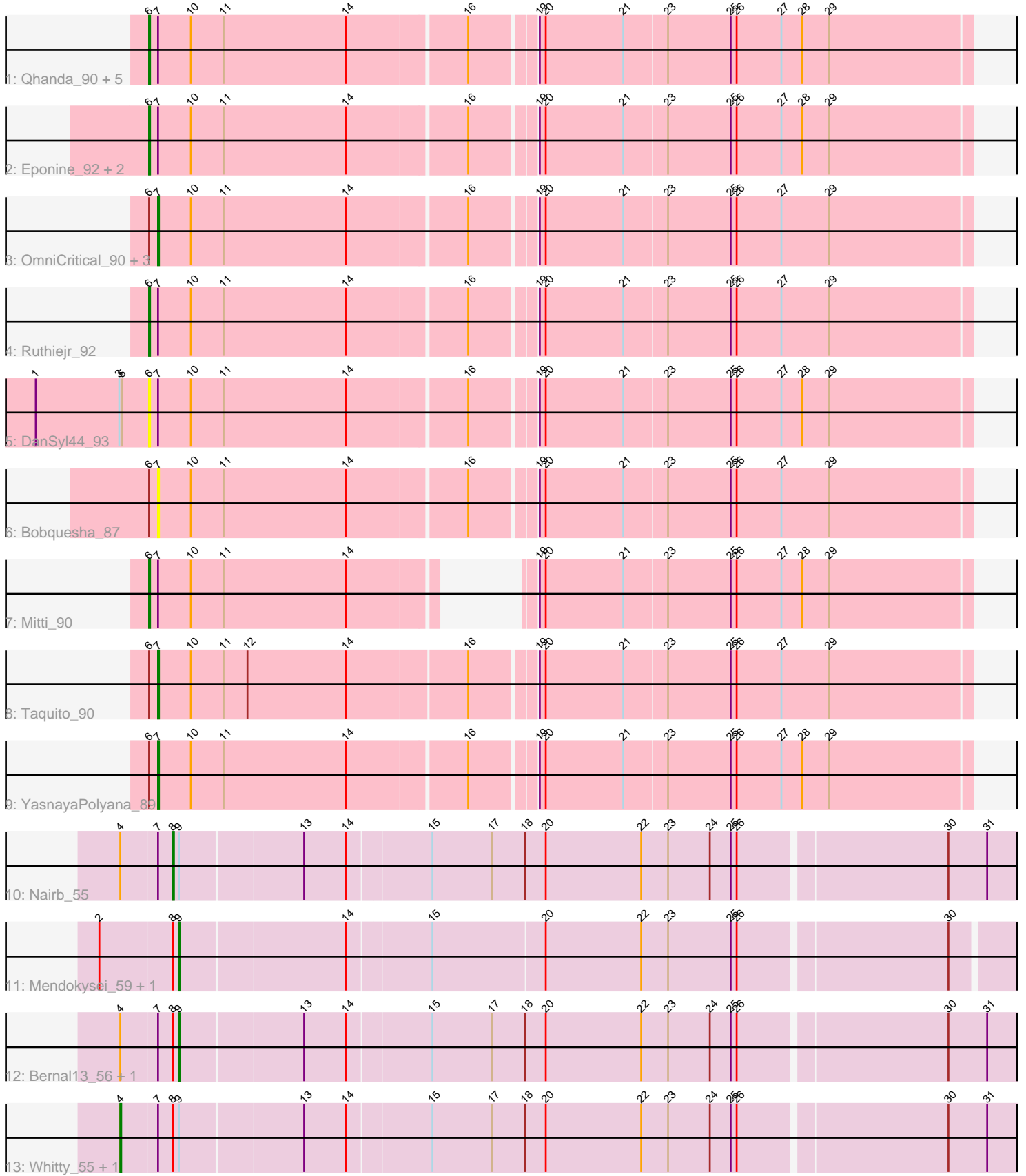


Pham 296862



Note: Tracks are now grouped by subcluster and scaled. Switching in subcluster is indicated by changes in track color. Track scale is now set by default to display the region 30 bp upstream of start 1 to 30 bp downstream of the last possible start. If this default region is judged to be packed too tightly with annotated starts, the track will be further scaled to only show that region of the ORF with annotated starts. This action will be indicated by adding "Zoomed" to the title. For starts, yellow indicates the location of called starts comprised solely of Glimmer/GeneMark auto-annotations, green indicates the location of called starts with at least 1 manual gene annotation.

Pham 296862 Report

This analysis was run 04/25/26 on database version 644.

Pham number 296862 has 26 members, 4 are drafts.

Phages represented in each track:

- Track 1 : Qhanda_90, Chancellor_90, SamScheppers_89, Slarp_88, Cheetobro_88, Lebo14_89
- Track 2 : Eponine_92, Fionnbharth_90, Wintermute_90
- Track 3 : OmniCritical_90, Y10_86, JF1_90, Y2_86
- Track 4 : Ruthiejr_92
- Track 5 : DanSyl44_93
- Track 6 : Bobquesha_87
- Track 7 : Mitti_90
- Track 8 : Taquito_90
- Track 9 : YasnayaPolyana_89
- Track 10 : Nairb_55
- Track 11 : Mendokysei_59, Nette_63
- Track 12 : Bernal13_56, Ibrahim_56
- Track 13 : Whitty_55, RonRayGun_56

Summary of Final Annotations (See graph section above for start numbers):

The start number called the most often in the published annotations is 6, it was called in 10 of the 22 non-draft genes in the pham.

Genes that call this "Most Annotated" start:

- Chancellor_90, Cheetobro_88, DanSyl44_93, Eponine_92, Fionnbharth_90, Lebo14_89, Mitti_90, Qhanda_90, Ruthiejr_92, SamScheppers_89, Slarp_88, Wintermute_90,

Genes that have the "Most Annotated" start but do not call it:

- Bobquesha_87, JF1_90, OmniCritical_90, Taquito_90, Y10_86, Y2_86, YasnayaPolyana_89,

Genes that do not have the "Most Annotated" start:

- Bernal13_56, Ibrahim_56, Mendokysei_59, Nairb_55, Nette_63, RonRayGun_56, Whitty_55,

Summary by start number:

Start 4:

- Found in 5 of 26 (19.2%) of genes in pham
- Manual Annotations of this start: 2 of 22
- Called 40.0% of time when present
- Phage (with cluster) where this start called: RonRayGun_56 (T), Whitty_55 (T),

Start 6:

- Found in 19 of 26 (73.1%) of genes in pham
- Manual Annotations of this start: 10 of 22
- Called 63.2% of time when present
- Phage (with cluster) where this start called: Chancellor_90 (K4), Cheetobro_88 (K4), DanSyl44_93 (K4), Eponine_92 (K4), Fionnbharth_90 (K4), Lebo14_89 (K4), Mitti_90 (K4), Qhanda_90 (K4), Ruthiejr_92 (K4), SamScheppers_89 (K4), Slarp_88 (K4), Wintermute_90 (K4),

Start 7:

- Found in 24 of 26 (92.3%) of genes in pham
- Manual Annotations of this start: 6 of 22
- Called 29.2% of time when present
- Phage (with cluster) where this start called: Bobquesha_87 (K4), JF1_90 (K4), OmniCritical_90 (K4), Taquito_90 (K4), Y10_86 (K4), Y2_86 (K4), YasnayaPolyana_89 (K4),

Start 8:

- Found in 7 of 26 (26.9%) of genes in pham
- Manual Annotations of this start: 1 of 22
- Called 14.3% of time when present
- Phage (with cluster) where this start called: Nairb_55 (T),

Start 9:

- Found in 7 of 26 (26.9%) of genes in pham
- Manual Annotations of this start: 3 of 22
- Called 57.1% of time when present
- Phage (with cluster) where this start called: Bernal13_56 (T), Ibrahim_56 (T), Mendokysej_59 (T), Nette_63 (T),

Summary by clusters:

There are 2 clusters represented in this pham: T, K4,

Info for manual annotations of cluster K4:

- Start number 6 was manually annotated 10 times for cluster K4.
- Start number 7 was manually annotated 6 times for cluster K4.

Info for manual annotations of cluster T:

- Start number 4 was manually annotated 2 times for cluster T.
- Start number 8 was manually annotated 1 time for cluster T.
- Start number 9 was manually annotated 3 times for cluster T.

Gene Information:

Gene: Bernal13_56 Start: 40310, Stop: 39471, Start Num: 9

Candidate Starts for Bernal13_56:

(Start: 4 @40367 has 2 MA's), (Start: 7 @40331 has 6 MA's), (Start: 8 @40316 has 1 MA's), (Start: 9 @40310 has 3 MA's), (13, 40190), (14, 40148), (15, 40067), (17, 40007), (18, 39974), (20, 39953), (22, 39857), (23, 39830), (24, 39788), (25, 39767), (26, 39761), (30, 39560), (31, 39521),

Gene: Bobquesha_87 Start: 51466, Stop: 52257, Start Num: 7

Candidate Starts for Bobquesha_87:

(Start: 6 @51457 has 10 MA's), (Start: 7 @51466 has 6 MA's), (10, 51499), (11, 51532), (14, 51655), (16, 51769), (19, 51829), (20, 51835), (21, 51913), (23, 51955), (25, 52018), (26, 52024), (27, 52069), (29, 52117),

Gene: Chancellor_90 Start: 54032, Stop: 54832, Start Num: 6

Candidate Starts for Chancellor_90:

(Start: 6 @54032 has 10 MA's), (Start: 7 @54041 has 6 MA's), (10, 54074), (11, 54107), (14, 54230), (16, 54344), (19, 54404), (20, 54410), (21, 54488), (23, 54530), (25, 54593), (26, 54599), (27, 54644), (28, 54665), (29, 54692),

Gene: Cheetobro_88 Start: 53586, Stop: 54386, Start Num: 6

Candidate Starts for Cheetobro_88:

(Start: 6 @53586 has 10 MA's), (Start: 7 @53595 has 6 MA's), (10, 53628), (11, 53661), (14, 53784), (16, 53898), (19, 53958), (20, 53964), (21, 54042), (23, 54084), (25, 54147), (26, 54153), (27, 54198), (28, 54219), (29, 54246),

Gene: DanSyl44_93 Start: 55418, Stop: 56218, Start Num: 6

Candidate Starts for DanSyl44_93:

(1, 55304), (3, 55388), (5, 55391), (Start: 6 @55418 has 10 MA's), (Start: 7 @55427 has 6 MA's), (10, 55460), (11, 55493), (14, 55616), (16, 55730), (19, 55790), (20, 55796), (21, 55874), (23, 55916), (25, 55979), (26, 55985), (27, 56030), (28, 56051), (29, 56078),

Gene: Eponine_92 Start: 55012, Stop: 55812, Start Num: 6

Candidate Starts for Eponine_92:

(Start: 6 @55012 has 10 MA's), (Start: 7 @55021 has 6 MA's), (10, 55054), (11, 55087), (14, 55210), (16, 55324), (19, 55384), (20, 55390), (21, 55468), (23, 55510), (25, 55573), (26, 55579), (27, 55624), (28, 55645), (29, 55672),

Gene: Fionnbharth_90 Start: 54410, Stop: 55210, Start Num: 6

Candidate Starts for Fionnbharth_90:

(Start: 6 @54410 has 10 MA's), (Start: 7 @54419 has 6 MA's), (10, 54452), (11, 54485), (14, 54608), (16, 54722), (19, 54782), (20, 54788), (21, 54866), (23, 54908), (25, 54971), (26, 54977), (27, 55022), (28, 55043), (29, 55070),

Gene: Ibrahim_56 Start: 40514, Stop: 39675, Start Num: 9

Candidate Starts for Ibrahim_56:

(Start: 4 @40571 has 2 MA's), (Start: 7 @40535 has 6 MA's), (Start: 8 @40520 has 1 MA's), (Start: 9 @40514 has 3 MA's), (13, 40394), (14, 40352), (15, 40271), (17, 40211), (18, 40178), (20, 40157), (22, 40061), (23, 40034), (24, 39992), (25, 39971), (26, 39965), (30, 39764), (31, 39725),

Gene: JF1_90 Start: 54343, Stop: 55134, Start Num: 7

Candidate Starts for JF1_90:

(Start: 6 @54334 has 10 MA's), (Start: 7 @54343 has 6 MA's), (10, 54376), (11, 54409), (14, 54532), (16, 54646), (19, 54706), (20, 54712), (21, 54790), (23, 54832), (25, 54895), (26, 54901), (27, 54946), (29, 54994),

Gene: Lebo14_89 Start: 54564, Stop: 55364, Start Num: 6

Candidate Starts for Lebo14_89:

(Start: 6 @54564 has 10 MA's), (Start: 7 @54573 has 6 MA's), (10, 54606), (11, 54639), (14, 54762), (16, 54876), (19, 54936), (20, 54942), (21, 55020), (23, 55062), (25, 55125), (26, 55131), (27, 55176), (28, 55197), (29, 55224),

Gene: Mendokysei_59 Start: 41092, Stop: 40265, Start Num: 9

Candidate Starts for Mendokysei_59:

(2, 41170), (Start: 8 @41098 has 1 MA's), (Start: 9 @41092 has 3 MA's), (14, 40930), (15, 40849), (20, 40738), (22, 40642), (23, 40615), (25, 40552), (26, 40546), (30, 40345),

Gene: Mitti_90 Start: 54306, Stop: 55028, Start Num: 6

Candidate Starts for Mitti_90:

(Start: 6 @54306 has 10 MA's), (Start: 7 @54315 has 6 MA's), (10, 54348), (11, 54381), (14, 54504), (19, 54600), (20, 54606), (21, 54684), (23, 54726), (25, 54789), (26, 54795), (27, 54840), (28, 54861), (29, 54888),

Gene: Nairb_55 Start: 40316, Stop: 39471, Start Num: 8

Candidate Starts for Nairb_55:

(Start: 4 @40367 has 2 MA's), (Start: 7 @40331 has 6 MA's), (Start: 8 @40316 has 1 MA's), (Start: 9 @40310 has 3 MA's), (13, 40190), (14, 40148), (15, 40067), (17, 40007), (18, 39974), (20, 39953), (22, 39857), (23, 39830), (24, 39788), (25, 39767), (26, 39761), (30, 39560), (31, 39521),

Gene: Nette_63 Start: 41101, Stop: 40274, Start Num: 9

Candidate Starts for Nette_63:

(2, 41179), (Start: 8 @41107 has 1 MA's), (Start: 9 @41101 has 3 MA's), (14, 40939), (15, 40858), (20, 40747), (22, 40651), (23, 40624), (25, 40561), (26, 40555), (30, 40354),

Gene: OmniCritical_90 Start: 54317, Stop: 55108, Start Num: 7

Candidate Starts for OmniCritical_90:

(Start: 6 @54308 has 10 MA's), (Start: 7 @54317 has 6 MA's), (10, 54350), (11, 54383), (14, 54506), (16, 54620), (19, 54680), (20, 54686), (21, 54764), (23, 54806), (25, 54869), (26, 54875), (27, 54920), (29, 54968),

Gene: Qhanda_90 Start: 53586, Stop: 54386, Start Num: 6

Candidate Starts for Qhanda_90:

(Start: 6 @53586 has 10 MA's), (Start: 7 @53595 has 6 MA's), (10, 53628), (11, 53661), (14, 53784), (16, 53898), (19, 53958), (20, 53964), (21, 54042), (23, 54084), (25, 54147), (26, 54153), (27, 54198), (28, 54219), (29, 54246),

Gene: RonRayGun_56 Start: 40571, Stop: 39675, Start Num: 4

Candidate Starts for RonRayGun_56:

(Start: 4 @40571 has 2 MA's), (Start: 7 @40535 has 6 MA's), (Start: 8 @40520 has 1 MA's), (Start: 9 @40514 has 3 MA's), (13, 40394), (14, 40352), (15, 40271), (17, 40211), (18, 40178), (20, 40157), (22, 40061), (23, 40034), (24, 39992), (25, 39971), (26, 39965), (30, 39764), (31, 39725),

Gene: Ruthiejr_92 Start: 54201, Stop: 55001, Start Num: 6

Candidate Starts for Ruthiejr_92:

(Start: 6 @54201 has 10 MA's), (Start: 7 @54210 has 6 MA's), (10, 54243), (11, 54276), (14, 54399), (16, 54513), (19, 54573), (20, 54579), (21, 54657), (23, 54699), (25, 54762), (26, 54768), (27, 54813), (29, 54861),

Gene: SamScheppers_89 Start: 54686, Stop: 55486, Start Num: 6

Candidate Starts for SamScheppers_89:

(Start: 6 @54686 has 10 MA's), (Start: 7 @54695 has 6 MA's), (10, 54728), (11, 54761), (14, 54884), (16, 54998), (19, 55058), (20, 55064), (21, 55142), (23, 55184), (25, 55247), (26, 55253), (27, 55298), (28, 55319), (29, 55346),

Gene: Slarp_88 Start: 53589, Stop: 54389, Start Num: 6

Candidate Starts for Slarp_88:

(Start: 6 @53589 has 10 MA's), (Start: 7 @53598 has 6 MA's), (10, 53631), (11, 53664), (14, 53787), (16, 53901), (19, 53961), (20, 53967), (21, 54045), (23, 54087), (25, 54150), (26, 54156), (27, 54201), (28, 54222), (29, 54249),

Gene: Taquito_90 Start: 54661, Stop: 55455, Start Num: 7

Candidate Starts for Taquito_90:

(Start: 6 @54652 has 10 MA's), (Start: 7 @54661 has 6 MA's), (10, 54694), (11, 54727), (12, 54751), (14, 54850), (16, 54967), (19, 55027), (20, 55033), (21, 55111), (23, 55153), (25, 55216), (26, 55222), (27, 55267), (29, 55315),

Gene: Whitty_55 Start: 40368, Stop: 39472, Start Num: 4

Candidate Starts for Whitty_55:

(Start: 4 @40368 has 2 MA's), (Start: 7 @40332 has 6 MA's), (Start: 8 @40317 has 1 MA's), (Start: 9 @40311 has 3 MA's), (13, 40191), (14, 40149), (15, 40068), (17, 40008), (18, 39975), (20, 39954), (22, 39858), (23, 39831), (24, 39789), (25, 39768), (26, 39762), (30, 39561), (31, 39522),

Gene: Wintermute_90 Start: 54390, Stop: 55190, Start Num: 6

Candidate Starts for Wintermute_90:

(Start: 6 @54390 has 10 MA's), (Start: 7 @54399 has 6 MA's), (10, 54432), (11, 54465), (14, 54588), (16, 54702), (19, 54762), (20, 54768), (21, 54846), (23, 54888), (25, 54951), (26, 54957), (27, 55002), (28, 55023), (29, 55050),

Gene: Y10_86 Start: 54343, Stop: 55134, Start Num: 7

Candidate Starts for Y10_86:

(Start: 6 @54334 has 10 MA's), (Start: 7 @54343 has 6 MA's), (10, 54376), (11, 54409), (14, 54532), (16, 54646), (19, 54706), (20, 54712), (21, 54790), (23, 54832), (25, 54895), (26, 54901), (27, 54946), (29, 54994),

Gene: Y2_86 Start: 54343, Stop: 55134, Start Num: 7

Candidate Starts for Y2_86:

(Start: 6 @54334 has 10 MA's), (Start: 7 @54343 has 6 MA's), (10, 54376), (11, 54409), (14, 54532), (16, 54646), (19, 54706), (20, 54712), (21, 54790), (23, 54832), (25, 54895), (26, 54901), (27, 54946), (29, 54994),

Gene: YasnayaPolyana_89 Start: 54323, Stop: 55114, Start Num: 7

Candidate Starts for YasnayaPolyana_89:

(Start: 6 @54314 has 10 MA's), (Start: 7 @54323 has 6 MA's), (10, 54356), (11, 54389), (14, 54512), (16, 54626), (19, 54686), (20, 54692), (21, 54770), (23, 54812), (25, 54875), (26, 54881), (27, 54926), (28, 54947), (29, 54974),