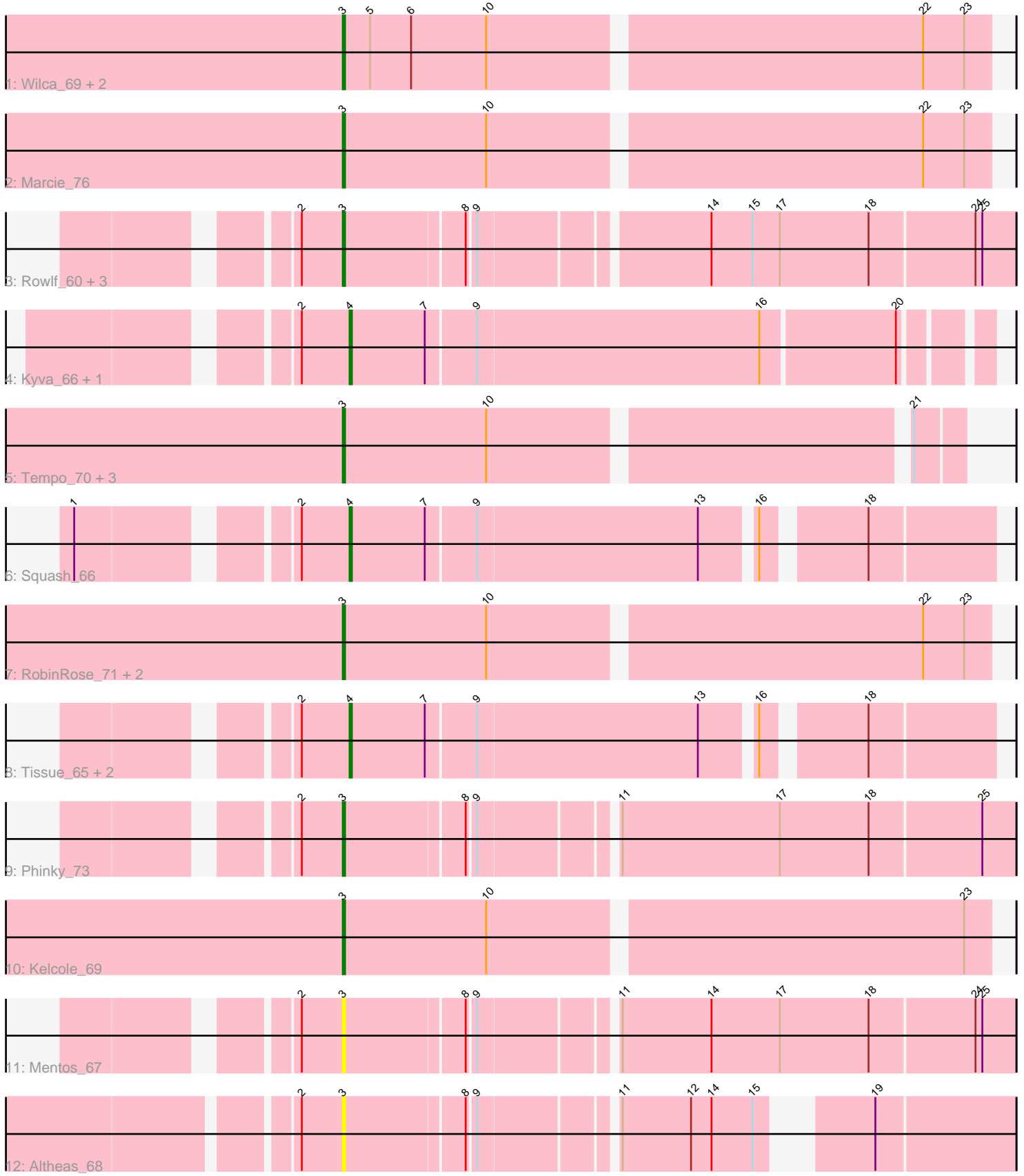


Pham 296880



Note: Tracks are now grouped by subcluster and scaled. Switching in subcluster is indicated by changes in track color. Track scale is now set by default to display the region 30 bp upstream of start 1 to 30 bp downstream of the last possible start. If this default region is judged to be packed too tightly with annotated starts, the track will be further scaled to only show that region of the ORF with annotated starts. This action will be indicated by adding "Zoomed" to the title. For starts, yellow indicates the location of called starts comprised solely of Glimmer/GeneMark auto-annotations, green indicates the location of called starts with at least 1 manual gene annotation.

## Pham 296880 Report

This analysis was run 04/25/26 on database version 644.

Pham number 296880 has 25 members, 4 are drafts.

Phages represented in each track:

- Track 1 : Wilca\_69, Pepe25\_67, BirdInFrench\_69
- Track 2 : Marcie\_76
- Track 3 : Rowlf\_60, Statler\_66, SlySloth\_67, BabyDotz\_63
- Track 4 : Kyva\_66, Grassboy\_66
- Track 5 : Tempo\_70, OneinaGillian\_68, CandC\_67, Fregley\_70
- Track 6 : Squash\_66
- Track 7 : RobinRose\_71, KillerQueen\_72, Romm\_71
- Track 8 : Tissue\_65, Judebell\_64, Nike\_65
- Track 9 : Phinky\_73
- Track 10 : Kelcole\_69
- Track 11 : Mentos\_67
- Track 12 : Altheas\_68

### ***Summary of Final Annotations (See graph section above for start numbers):***

The start number called the most often in the published annotations is 3, it was called in 15 of the 21 non-draft genes in the pham.

Genes that call this "Most Annotated" start:

- Altheas\_68, BabyDotz\_63, BirdInFrench\_69, CandC\_67, Fregley\_70, Kelcole\_69, KillerQueen\_72, Marcie\_76, Mentos\_67, OneinaGillian\_68, Pepe25\_67, Phinky\_73, RobinRose\_71, Romm\_71, Rowlf\_60, SlySloth\_67, Statler\_66, Tempo\_70, Wilca\_69,

Genes that have the "Most Annotated" start but do not call it:

- 

Genes that do not have the "Most Annotated" start:

- Grassboy\_66, Judebell\_64, Kyva\_66, Nike\_65, Squash\_66, Tissue\_65,

### **Summary by start number:**

Start 3:

- Found in 19 of 25 ( 76.0% ) of genes in pham
- Manual Annotations of this start: 15 of 21

- Called 100.0% of time when present
- Phage (with cluster) where this start called: Altheas\_68 (EG), BabyDotz\_63 (EG), BirdInFrench\_69 (EG), CandC\_67 (EG), Fregley\_70 (EG), Kelcole\_69 (EG), KillerQueen\_72 (EG), Marcie\_76 (EG), Mentos\_67 (EG), OneinaGillian\_68 (EG), Pepe25\_67 (EG), Phinky\_73 (EG), RobinRose\_71 (EG), Romm\_71 (EG), Rowlf\_60 (EG), SlySloth\_67 (EG), Statler\_66 (EG), Tempo\_70 (EG), Wilca\_69 (EG),

Start 4:

- Found in 6 of 25 ( 24.0% ) of genes in pham
- Manual Annotations of this start: 6 of 21
- Called 100.0% of time when present
- Phage (with cluster) where this start called: Grassboy\_66 (EG), Judebell\_64 (EG), Kyva\_66 (EG), Nike\_65 (EG), Squash\_66 (EG), Tissue\_65 (EG),

### Summary by clusters:

There is one cluster represented in this pham: EG

Info for manual annotations of cluster EG:

- Start number 3 was manually annotated 15 times for cluster EG.
- Start number 4 was manually annotated 6 times for cluster EG.

### Gene Information:

Gene: Altheas\_68 Start: 45402, Stop: 45145, Start Num: 3

Candidate Starts for Altheas\_68:

(2, 45420), (Start: 3 @45402 has 15 MA's), (8, 45351), (9, 45348), (11, 45294), (12, 45264), (14, 45255), (15, 45237), (19, 45204),

Gene: BabyDotz\_63 Start: 45425, Stop: 45147, Start Num: 3

Candidate Starts for BabyDotz\_63:

(2, 45443), (Start: 3 @45425 has 15 MA's), (8, 45374), (9, 45371), (14, 45278), (15, 45260), (17, 45248), (18, 45209), (24, 45164), (25, 45161),

Gene: BirdInFrench\_69 Start: 45105, Stop: 44830, Start Num: 3

Candidate Starts for BirdInFrench\_69:

(Start: 3 @45105 has 15 MA's), (5, 45093), (6, 45075), (10, 45042), (22, 44859), (23, 44841),

Gene: CandC\_67 Start: 44307, Stop: 44053, Start Num: 3

Candidate Starts for CandC\_67:

(Start: 3 @44307 has 15 MA's), (10, 44244), (21, 44073),

Gene: Fregley\_70 Start: 44656, Stop: 44402, Start Num: 3

Candidate Starts for Fregley\_70:

(Start: 3 @44656 has 15 MA's), (10, 44593), (21, 44422),

Gene: Grassboy\_66 Start: 45240, Stop: 44974, Start Num: 4

Candidate Starts for Grassboy\_66:

(2, 45261), (Start: 4 @45240 has 6 MA's), (7, 45207), (9, 45186), (16, 45063), (20, 45006),

Gene: Judebell\_64 Start: 44542, Stop: 44279, Start Num: 4

Candidate Starts for Judebell\_64:

(2, 44563), (Start: 4 @44542 has 6 MA's), (7, 44509), (9, 44488), (13, 44392), (16, 44371), (18, 44332),

Gene: Kelcole\_69 Start: 44879, Stop: 44604, Start Num: 3

Candidate Starts for Kelcole\_69:

(Start: 3 @44879 has 15 MA's), (10, 44816), (23, 44615),

Gene: KillerQueen\_72 Start: 45114, Stop: 44839, Start Num: 3

Candidate Starts for KillerQueen\_72:

(Start: 3 @45114 has 15 MA's), (10, 45051), (22, 44868), (23, 44850),

Gene: Kyva\_66 Start: 45263, Stop: 44997, Start Num: 4

Candidate Starts for Kyva\_66:

(2, 45284), (Start: 4 @45263 has 6 MA's), (7, 45230), (9, 45209), (16, 45086), (20, 45029),

Gene: Marcie\_76 Start: 45775, Stop: 45500, Start Num: 3

Candidate Starts for Marcie\_76:

(Start: 3 @45775 has 15 MA's), (10, 45712), (22, 45529), (23, 45511),

Gene: Mentos\_67 Start: 45830, Stop: 45552, Start Num: 3

Candidate Starts for Mentos\_67:

(2, 45848), (Start: 3 @45830 has 15 MA's), (8, 45779), (9, 45776), (11, 45722), (14, 45683), (17, 45653), (18, 45614), (24, 45569), (25, 45566),

Gene: Nike\_65 Start: 45576, Stop: 45313, Start Num: 4

Candidate Starts for Nike\_65:

(2, 45597), (Start: 4 @45576 has 6 MA's), (7, 45543), (9, 45522), (13, 45426), (16, 45405), (18, 45366),

Gene: OneinaGillian\_68 Start: 44414, Stop: 44160, Start Num: 3

Candidate Starts for OneinaGillian\_68:

(Start: 3 @44414 has 15 MA's), (10, 44351), (21, 44180),

Gene: Pepe25\_67 Start: 44024, Stop: 43749, Start Num: 3

Candidate Starts for Pepe25\_67:

(Start: 3 @44024 has 15 MA's), (5, 44012), (6, 43994), (10, 43961), (22, 43778), (23, 43760),

Gene: Phinky\_73 Start: 46720, Stop: 46442, Start Num: 3

Candidate Starts for Phinky\_73:

(2, 46738), (Start: 3 @46720 has 15 MA's), (8, 46669), (9, 46666), (11, 46612), (17, 46543), (18, 46504), (25, 46456),

Gene: RobinRose\_71 Start: 45063, Stop: 44788, Start Num: 3

Candidate Starts for RobinRose\_71:

(Start: 3 @45063 has 15 MA's), (10, 45000), (22, 44817), (23, 44799),

Gene: Romm\_71 Start: 45060, Stop: 44785, Start Num: 3

Candidate Starts for Romm\_71:

(Start: 3 @45060 has 15 MA's), (10, 44997), (22, 44814), (23, 44796),

Gene: Rowlf\_60 Start: 44046, Stop: 43768, Start Num: 3

Candidate Starts for Rowlf\_60:

(2, 44064), (Start: 3 @44046 has 15 MA's), (8, 43995), (9, 43992), (14, 43899), (15, 43881), (17, 43869), (18, 43830), (24, 43785), (25, 43782),

Gene: SlySloth\_67 Start: 44693, Stop: 44415, Start Num: 3

Candidate Starts for SlySloth\_67:

(2, 44711), (Start: 3 @44693 has 15 MA's), (8, 44642), (9, 44639), (14, 44546), (15, 44528), (17, 44516), (18, 44477), (24, 44432), (25, 44429),

Gene: Squash\_66 Start: 45411, Stop: 45148, Start Num: 4

Candidate Starts for Squash\_66:

(1, 45513), (2, 45432), (Start: 4 @45411 has 6 MA's), (7, 45378), (9, 45357), (13, 45261), (16, 45240), (18, 45201),

Gene: Statler\_66 Start: 44762, Stop: 44484, Start Num: 3

Candidate Starts for Statler\_66:

(2, 44780), (Start: 3 @44762 has 15 MA's), (8, 44711), (9, 44708), (14, 44615), (15, 44597), (17, 44585), (18, 44546), (24, 44501), (25, 44498),

Gene: Tempo\_70 Start: 45003, Stop: 44749, Start Num: 3

Candidate Starts for Tempo\_70:

(Start: 3 @45003 has 15 MA's), (10, 44940), (21, 44769),

Gene: Tissue\_65 Start: 45109, Stop: 44846, Start Num: 4

Candidate Starts for Tissue\_65:

(2, 45130), (Start: 4 @45109 has 6 MA's), (7, 45076), (9, 45055), (13, 44959), (16, 44938), (18, 44899),

Gene: Wilca\_69 Start: 45105, Stop: 44830, Start Num: 3

Candidate Starts for Wilca\_69:

(Start: 3 @45105 has 15 MA's), (5, 45093), (6, 45075), (10, 45042), (22, 44859), (23, 44841),