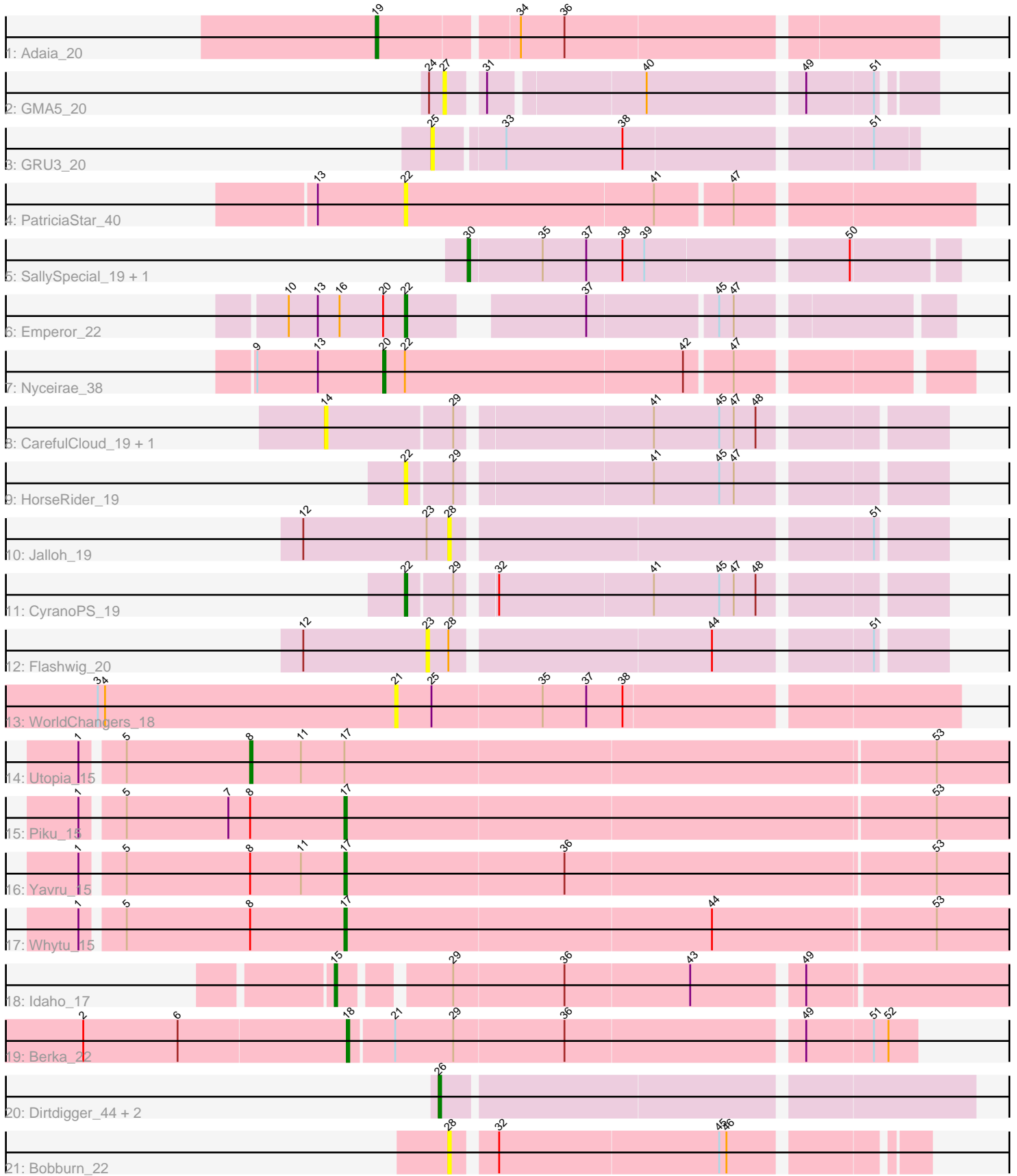


Pham 296892



Note: Tracks are now grouped by subcluster and scaled. Switching in subcluster is indicated by changes in track color. Track scale is now set by default to display the region 30 bp upstream of start 1 to 30 bp downstream of the last possible start. If this default region is judged to be packed too tightly with annotated starts, the track will be further scaled to only show that region of the ORF with annotated starts. This action will be indicated by adding "Zoomed" to the title. For starts, yellow indicates the location of called starts comprised solely of Glimmer/GeneMark auto-annotations, green indicates the location of called starts with at least 1 manual gene annotation.

Pham 296892 Report

This analysis was run 04/25/26 on database version 644.

Pham number 296892 has 25 members, 12 are drafts.

Phages represented in each track:

- Track 1 : Adaia_20
- Track 2 : GMA5_20
- Track 3 : GRU3_20
- Track 4 : PatriciaStar_40
- Track 5 : SallySpecial_19, Dirtfootball_22
- Track 6 : Emperor_22
- Track 7 : Nyceirae_38
- Track 8 : CarefulCloud_19, TailX7_19
- Track 9 : HorseRider_19
- Track 10 : Jalloh_19
- Track 11 : CyranoPS_19
- Track 12 : Flashwig_20
- Track 13 : WorldChangers_18
- Track 14 : Utopia_15
- Track 15 : Piku_15
- Track 16 : Yavru_15
- Track 17 : Whytu_15
- Track 18 : Idaho_17
- Track 19 : Berka_22
- Track 20 : Dirdigger_44, IsHungry_38, Gusanita_41
- Track 21 : Bobburn_22

Summary of Final Annotations (See graph section above for start numbers):

The start number called the most often in the published annotations is 17, it was called in 3 of the 13 non-draft genes in the pham.

Genes that call this "Most Annotated" start:

- Piku_15, Whytu_15, Yavru_15,

Genes that have the "Most Annotated" start but do not call it:

- Utopia_15,

Genes that do not have the "Most Annotated" start:

- Adaia_20, Berka_22, Bobburn_22, CarefulCloud_19, CyranoPS_19, Dirdigger_44, Dirtfootball_22, Emperor_22, Flashwig_20, GMA5_20, GRU3_20, Gusanita_41, HorseRider_19, Idaho_17, IsHungry_38, Jalloh_19, Nyceirae_38, PatriciaStar_40, SallySpecial_19, TailX7_19, WorldChangers_18,

Summary by start number:

Start 8:

- Found in 4 of 25 (16.0%) of genes in pham
- Manual Annotations of this start: 1 of 13
- Called 25.0% of time when present
- Phage (with cluster) where this start called: Utopia_15 (FE),

Start 14:

- Found in 2 of 25 (8.0%) of genes in pham
- No Manual Annotations of this start.
- Called 100.0% of time when present
- Phage (with cluster) where this start called: CarefulCloud_19 (ER), TailX7_19 (ER),

Start 15:

- Found in 1 of 25 (4.0%) of genes in pham
- Manual Annotations of this start: 1 of 13
- Called 100.0% of time when present
- Phage (with cluster) where this start called: Idaho_17 (FE),

Start 17:

- Found in 4 of 25 (16.0%) of genes in pham
- Manual Annotations of this start: 3 of 13
- Called 75.0% of time when present
- Phage (with cluster) where this start called: Piku_15 (FE), Whytu_15 (FE), Yavru_15 (FE),

Start 18:

- Found in 1 of 25 (4.0%) of genes in pham
- Manual Annotations of this start: 1 of 13
- Called 100.0% of time when present
- Phage (with cluster) where this start called: Berka_22 (FE),

Start 19:

- Found in 1 of 25 (4.0%) of genes in pham
- Manual Annotations of this start: 1 of 13
- Called 100.0% of time when present
- Phage (with cluster) where this start called: Adaia_20 (AX),

Start 20:

- Found in 2 of 25 (8.0%) of genes in pham
- Manual Annotations of this start: 1 of 13
- Called 50.0% of time when present
- Phage (with cluster) where this start called: Nyceirae_38 (DT),

Start 21:

- Found in 2 of 25 (8.0%) of genes in pham
- No Manual Annotations of this start.

- Called 50.0% of time when present
- Phage (with cluster) where this start called: WorldChangers_18 (FE),

Start 22:

- Found in 5 of 25 (20.0%) of genes in pham
- Manual Annotations of this start: 2 of 13
- Called 80.0% of time when present
- Phage (with cluster) where this start called: CyranoPS_19 (ER), Emperor_22 (DM), HorseRider_19 (ER), PatriciaStar_40 (DB),

Start 23:

- Found in 2 of 25 (8.0%) of genes in pham
- No Manual Annotations of this start.
- Called 50.0% of time when present
- Phage (with cluster) where this start called: Flashwig_20 (ER),

Start 25:

- Found in 2 of 25 (8.0%) of genes in pham
- No Manual Annotations of this start.
- Called 50.0% of time when present
- Phage (with cluster) where this start called: GRU3_20 (CW2),

Start 26:

- Found in 3 of 25 (12.0%) of genes in pham
- Manual Annotations of this start: 2 of 13
- Called 100.0% of time when present
- Phage (with cluster) where this start called: Dirtdigger_44 (FF), Gusanita_41 (FF), IsHungry_38 (FF),

Start 27:

- Found in 1 of 25 (4.0%) of genes in pham
- No Manual Annotations of this start.
- Called 100.0% of time when present
- Phage (with cluster) where this start called: GMA5_20 (CW2),

Start 28:

- Found in 3 of 25 (12.0%) of genes in pham
- No Manual Annotations of this start.
- Called 66.7% of time when present
- Phage (with cluster) where this start called: Bobburn_22 (singleton), Jalloh_19 (ER),

Start 30:

- Found in 2 of 25 (8.0%) of genes in pham
- Manual Annotations of this start: 1 of 13
- Called 100.0% of time when present
- Phage (with cluster) where this start called: Dirtfootball_22 (DM), SallySpecial_19 (DM),

Summary by clusters:

There are 9 clusters represented in this pham: singleton, DM, CW2, DB, FE, FF, AX, DT, ER,

Info for manual annotations of cluster AX:

- Start number 19 was manually annotated 1 time for cluster AX.

Info for manual annotations of cluster DM:

- Start number 22 was manually annotated 1 time for cluster DM.
- Start number 30 was manually annotated 1 time for cluster DM.

Info for manual annotations of cluster DT:

- Start number 20 was manually annotated 1 time for cluster DT.

Info for manual annotations of cluster ER:

- Start number 22 was manually annotated 1 time for cluster ER.

Info for manual annotations of cluster FE:

- Start number 8 was manually annotated 1 time for cluster FE.
- Start number 15 was manually annotated 1 time for cluster FE.
- Start number 17 was manually annotated 3 times for cluster FE.
- Start number 18 was manually annotated 1 time for cluster FE.

Info for manual annotations of cluster FF:

- Start number 26 was manually annotated 2 times for cluster FF.

Gene Information:

Gene: Adaia_20 Start: 13289, Stop: 13507, Start Num: 19

Candidate Starts for Adaia_20:

(Start: 19 @13289 has 1 MA's), (34, 13343), (36, 13361),

Gene: Berka_22 Start: 13026, Stop: 13250, Start Num: 18

Candidate Starts for Berka_22:

(2, 12918), (6, 12957), (Start: 18 @13026 has 1 MA's), (21, 13044), (29, 13068), (36, 13113), (49, 13206), (51, 13233), (52, 13239),

Gene: Bobburn_22 Start: 15584, Stop: 15763, Start Num: 28

Candidate Starts for Bobburn_22:

(28, 15584), (32, 15599), (45, 15689), (46, 15692),

Gene: CarefulCloud_19 Start: 12759, Stop: 12995, Start Num: 14

Candidate Starts for CarefulCloud_19:

(14, 12759), (29, 12810), (41, 12885), (45, 12912), (47, 12918), (48, 12927),

Gene: CyranoPS_19 Start: 12813, Stop: 13016, Start Num: 22

Candidate Starts for CyranoPS_19:

(Start: 22 @12813 has 2 MA's), (29, 12831), (32, 12843), (41, 12906), (45, 12933), (47, 12939), (48, 12948),

Gene: Dirtdigger_44 Start: 30893, Stop: 31102, Start Num: 26

Candidate Starts for Dirtdigger_44:

(Start: 26 @30893 has 2 MA's),

Gene: Dirtfootball_22 Start: 14446, Stop: 14637, Start Num: 30
Candidate Starts for Dirtfootball_22:
(Start: 30 @14446 has 1 MA's), (35, 14476), (37, 14494), (38, 14509), (39, 14518), (50, 14596),

Gene: Emperor_22 Start: 15163, Stop: 15360, Start Num: 22
Candidate Starts for Emperor_22:
(10, 15115), (13, 15127), (16, 15136), (Start: 20 @15154 has 1 MA's), (Start: 22 @15163 has 2 MA's),
(37, 15223), (45, 15274), (47, 15280),

Gene: Flashwig_20 Start: 13383, Stop: 13580, Start Num: 23
Candidate Starts for Flashwig_20:
(12, 13332), (23, 13383), (28, 13392), (44, 13494), (51, 13554),

Gene: GMA5_20 Start: 14712, Stop: 14891, Start Num: 27
Candidate Starts for GMA5_20:
(24, 14706), (27, 14712), (31, 14724), (40, 14784), (49, 14844), (51, 14871),

Gene: GRU3_20 Start: 14761, Stop: 14949, Start Num: 25
Candidate Starts for GRU3_20:
(25, 14761), (33, 14788), (38, 14836), (51, 14932),

Gene: Gusanita_41 Start: 30644, Stop: 30853, Start Num: 26
Candidate Starts for Gusanita_41:
(Start: 26 @30644 has 2 MA's),

Gene: HorseRider_19 Start: 12860, Stop: 13063, Start Num: 22
Candidate Starts for HorseRider_19:
(Start: 22 @12860 has 2 MA's), (29, 12878), (41, 12953), (45, 12980), (47, 12986),

Gene: Idaho_17 Start: 13517, Stop: 13774, Start Num: 15
Candidate Starts for Idaho_17:
(Start: 15 @13517 has 1 MA's), (29, 13556), (36, 13601), (43, 13652), (49, 13694),

Gene: IsHungry_38 Start: 28831, Stop: 29040, Start Num: 26
Candidate Starts for IsHungry_38:
(Start: 26 @28831 has 2 MA's),

Gene: Jalloh_19 Start: 12648, Stop: 12836, Start Num: 28
Candidate Starts for Jalloh_19:
(12, 12588), (23, 12639), (28, 12648), (51, 12810),

Gene: Nyceirae_38 Start: 30354, Stop: 30581, Start Num: 20
Candidate Starts for Nyceirae_38:
(9, 30303), (13, 30327), (Start: 20 @30354 has 1 MA's), (Start: 22 @30363 has 2 MA's), (42, 30477),
(47, 30495),

Gene: PatriciaStar_40 Start: 32550, Stop: 32774, Start Num: 22
Candidate Starts for PatriciaStar_40:
(13, 32514), (Start: 22 @32550 has 2 MA's), (41, 32652), (47, 32682),

Gene: Piku_15 Start: 12477, Stop: 12746, Start Num: 17
Candidate Starts for Piku_15:

(1, 12372), (5, 12387), (7, 12429), (Start: 8 @12438 has 1 MA's), (Start: 17 @12477 has 3 MA's), (53, 12717),

Gene: SallySpecial_19 Start: 14475, Stop: 14666, Start Num: 30

Candidate Starts for SallySpecial_19:

(Start: 30 @14475 has 1 MA's), (35, 14505), (37, 14523), (38, 14538), (39, 14547), (50, 14625),

Gene: TailX7_19 Start: 12907, Stop: 13143, Start Num: 14

Candidate Starts for TailX7_19:

(14, 12907), (29, 12958), (41, 13033), (45, 13060), (47, 13066), (48, 13075),

Gene: Utopia_15 Start: 12409, Stop: 12717, Start Num: 8

Candidate Starts for Utopia_15:

(1, 12343), (5, 12358), (Start: 8 @12409 has 1 MA's), (11, 12430), (Start: 17 @12448 has 3 MA's), (53, 12688),

Gene: Whytu_15 Start: 12543, Stop: 12812, Start Num: 17

Candidate Starts for Whytu_15:

(1, 12438), (5, 12453), (Start: 8 @12504 has 1 MA's), (Start: 17 @12543 has 3 MA's), (44, 12693), (53, 12783),

Gene: WorldChangers_18 Start: 12884, Stop: 13108, Start Num: 21

Candidate Starts for WorldChangers_18:

(3, 12761), (4, 12764), (21, 12884), (25, 12899), (35, 12944), (37, 12962), (38, 12977),

Gene: Yavru_15 Start: 12438, Stop: 12707, Start Num: 17

Candidate Starts for Yavru_15:

(1, 12333), (5, 12348), (Start: 8 @12399 has 1 MA's), (11, 12420), (Start: 17 @12438 has 3 MA's), (36, 12528), (53, 12678),