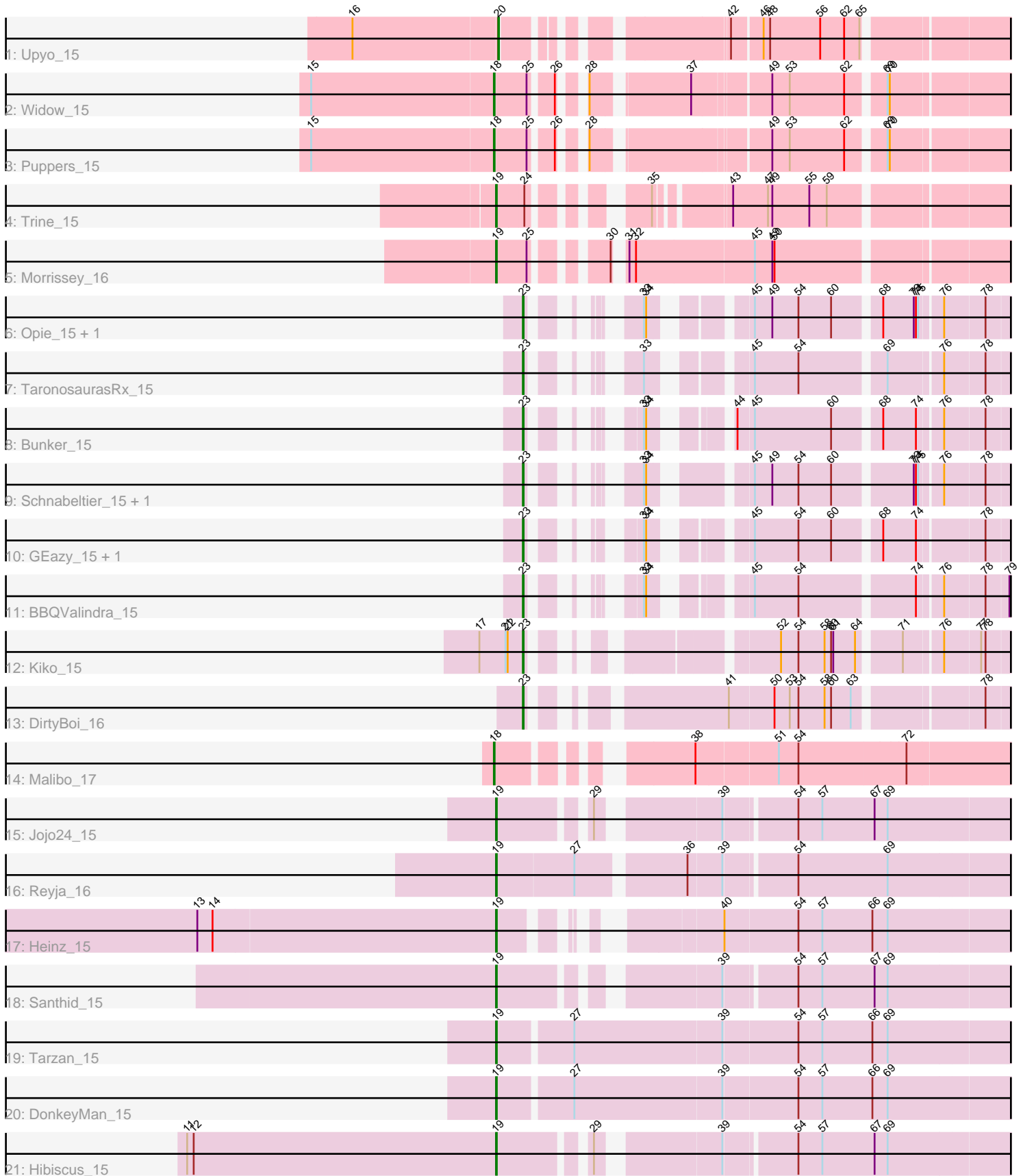


# Zoomed Pham 296900



Note: Tracks are now grouped by subcluster and scaled. Switching in subcluster is indicated by changes in track color. Track scale is now set by default to display the region 30 bp upstream of start 1 to 30 bp downstream of the last possible start. If this default region is judged to be packed too tightly with annotated starts, the track will be further scaled to only show that region of the ORF with annotated starts. This action will be indicated by adding "Zoomed" to the title. For starts, yellow indicates the location of called starts comprised solely of Glimmer/GeneMark auto-annotations, green indicates the location of called starts with at least 1 manual gene annotation.

## Pham 296900 Report

This analysis was run 04/25/26 on database version 644.

Pham number 296900 has 24 members, 0 are drafts.

Phages represented in each track:

- Track 1 : Upyo\_15
- Track 2 : Widow\_15
- Track 3 : Puppies\_15
- Track 4 : Trine\_15
- Track 5 : Morrissey\_16
- Track 6 : Opie\_15, Eyes\_15
- Track 7 : TaronosaurusRx\_15
- Track 8 : Bunker\_15
- Track 9 : Schnabeltier\_15, MagicMan\_15
- Track 10 : GEazy\_15, HannahD\_15
- Track 11 : BBQValindra\_15
- Track 12 : Kiko\_15
- Track 13 : DirtyBoi\_16
- Track 14 : Malibo\_17
- Track 15 : Jojo24\_15
- Track 16 : Reyja\_16
- Track 17 : Heinz\_15
- Track 18 : Santhid\_15
- Track 19 : Tarzan\_15
- Track 20 : DonkeyMan\_15
- Track 21 : Hibiscus\_15

### ***Summary of Final Annotations (See graph section above for start numbers):***

The start number called the most often in the published annotations is 23, it was called in 11 of the 24 non-draft genes in the pham.

Genes that call this "Most Annotated" start:

- BBQValindra\_15, Bunker\_15, DirtyBoi\_16, Eyes\_15, GEazy\_15, HannahD\_15, Kiko\_15, MagicMan\_15, Opie\_15, Schnabeltier\_15, TaronosaurusRx\_15,

Genes that have the "Most Annotated" start but do not call it:

-

Genes that do not have the "Most Annotated" start:

- DonkeyMan\_15, Heinz\_15, Hibiscus\_15, Jojo24\_15, Malibo\_17, Morrissey\_16, Poppers\_15, Reyja\_16, Santhid\_15, Tarzan\_15, Trine\_15, Upyo\_15, Widow\_15,

### Summary by start number:

Start 18:

- Found in 3 of 24 ( 12.5% ) of genes in pham
- Manual Annotations of this start: 3 of 24
- Called 100.0% of time when present
- Phage (with cluster) where this start called: Malibo\_17 (DW), Poppers\_15 (CD), Widow\_15 (CD),

Start 19:

- Found in 9 of 24 ( 37.5% ) of genes in pham
- Manual Annotations of this start: 9 of 24
- Called 100.0% of time when present
- Phage (with cluster) where this start called: DonkeyMan\_15 (DY), Heinz\_15 (DY), Hibiscus\_15 (DY), Jojo24\_15 (DY), Morrissey\_16 (CD), Reyja\_16 (DY), Santhid\_15 (DY), Tarzan\_15 (DY), Trine\_15 (CD),

Start 20:

- Found in 1 of 24 ( 4.2% ) of genes in pham
- Manual Annotations of this start: 1 of 24
- Called 100.0% of time when present
- Phage (with cluster) where this start called: Upyo\_15 (CD),

Start 23:

- Found in 11 of 24 ( 45.8% ) of genes in pham
- Manual Annotations of this start: 11 of 24
- Called 100.0% of time when present
- Phage (with cluster) where this start called: BBQValindra\_15 (DB), Bunker\_15 (DB), DirtyBoi\_16 (DB), Eyes\_15 (DB), GEazy\_15 (DB), HannahD\_15 (DB), Kiko\_15 (DB), MagicMan\_15 (DB), Opie\_15 (DB), Schnabeltier\_15 (DB), TaronosaurusRx\_15 (DB),

### Summary by clusters:

There are 4 clusters represented in this pham: DW, CD, DB, DY,

Info for manual annotations of cluster CD:

- Start number 18 was manually annotated 2 times for cluster CD.
- Start number 19 was manually annotated 2 times for cluster CD.
- Start number 20 was manually annotated 1 time for cluster CD.

Info for manual annotations of cluster DB:

- Start number 23 was manually annotated 11 times for cluster DB.

Info for manual annotations of cluster DW:

- Start number 18 was manually annotated 1 time for cluster DW.

Info for manual annotations of cluster DY:

- Start number 19 was manually annotated 7 times for cluster DY.

**Gene Information:**

Gene: BBQValindra\_15 Start: 9257, Stop: 10068, Start Num: 23

Candidate Starts for BBQValindra\_15:

(Start: 23 @9257 has 11 MA's), (33, 9323), (34, 9326), (45, 9416), (54, 9476), (74, 9623), (76, 9653), (78, 9707), (79, 9737), (80, 9740),

Gene: Bunker\_15 Start: 9257, Stop: 10068, Start Num: 23

Candidate Starts for Bunker\_15:

(Start: 23 @9257 has 11 MA's), (33, 9323), (34, 9326), (44, 9395), (45, 9416), (60, 9521), (68, 9578), (74, 9623), (76, 9653), (78, 9707),

Gene: DirtyBoi\_16 Start: 9613, Stop: 10517, Start Num: 23

Candidate Starts for DirtyBoi\_16:

(Start: 23 @9613 has 11 MA's), (41, 9817), (50, 9877), (53, 9898), (54, 9910), (58, 9946), (60, 9955), (63, 9982), (78, 10141), (89, 10333), (95, 10429),

Gene: DonkeyMan\_15 Start: 8928, Stop: 9955, Start Num: 19

Candidate Starts for DonkeyMan\_15:

(Start: 19 @8928 has 9 MA's), (27, 9024), (39, 9225), (54, 9324), (57, 9357), (66, 9426), (69, 9447), (81, 9621), (92, 9828), (98, 9948),

Gene: Eyes\_15 Start: 9267, Stop: 10099, Start Num: 23

Candidate Starts for Eyes\_15:

(Start: 23 @9267 has 11 MA's), (33, 9336), (34, 9339), (45, 9432), (49, 9456), (54, 9492), (60, 9537), (68, 9594), (73, 9636), (74, 9639), (75, 9642), (76, 9669), (78, 9723), (88, 9858), (96, 10026),

Gene: GEazy\_15 Start: 9276, Stop: 10090, Start Num: 23

Candidate Starts for GEazy\_15:

(Start: 23 @9276 has 11 MA's), (33, 9345), (34, 9348), (45, 9438), (54, 9498), (60, 9543), (68, 9600), (74, 9645), (78, 9729), (91, 9954),

Gene: HannahD\_15 Start: 9276, Stop: 10090, Start Num: 23

Candidate Starts for HannahD\_15:

(Start: 23 @9276 has 11 MA's), (33, 9345), (34, 9348), (45, 9438), (54, 9498), (60, 9543), (68, 9600), (74, 9645), (78, 9729), (91, 9954),

Gene: Heinz\_15 Start: 8959, Stop: 9896, Start Num: 19

Candidate Starts for Heinz\_15:

(1, 7540), (2, 7555), (3, 7579), (4, 7678), (5, 7738), (6, 7918), (7, 7987), (8, 8092), (9, 8146), (10, 8170), (13, 8551), (14, 8572), (Start: 19 @8959 has 9 MA's), (40, 9166), (54, 9265), (57, 9298), (66, 9367), (69, 9388), (82, 9577), (92, 9769), (94, 9820), (97, 9850), (98, 9889),

Gene: Hibiscus\_15 Start: 8943, Stop: 9913, Start Num: 19

Candidate Starts for Hibiscus\_15:

(11, 8517), (12, 8526), (Start: 19 @8943 has 9 MA's), (29, 9048), (39, 9192), (54, 9282), (57, 9315), (67, 9387), (69, 9405), (92, 9786), (94, 9837), (98, 9906),

Gene: Jojo24\_15 Start: 8937, Stop: 9907, Start Num: 19

Candidate Starts for Jojo24\_15:

(Start: 19 @8937 has 9 MA's), (29, 9042), (39, 9186), (54, 9276), (57, 9309), (67, 9381), (69, 9399), (92, 9780), (94, 9831), (98, 9900),

Gene: Kiko\_15 Start: 9515, Stop: 10383, Start Num: 23

Candidate Starts for Kiko\_15:

(17, 9458), (21, 9494), (22, 9497), (Start: 23 @9515 has 11 MA's), (52, 9752), (54, 9776), (58, 9812), (60, 9821), (61, 9824), (64, 9854), (71, 9905), (76, 9953), (77, 10001), (78, 10007), (80, 10040), (84, 10085), (95, 10295),

Gene: MagicMan\_15 Start: 9597, Stop: 10435, Start Num: 23

Candidate Starts for MagicMan\_15:

(Start: 23 @9597 has 11 MA's), (33, 9666), (34, 9669), (45, 9768), (49, 9792), (54, 9828), (60, 9873), (73, 9972), (74, 9975), (75, 9978), (76, 10005), (78, 10059), (99, 10416),

Gene: Malibo\_17 Start: 9627, Stop: 10582, Start Num: 18

Candidate Starts for Malibo\_17:

(Start: 18 @9627 has 3 MA's), (38, 9828), (51, 9936), (54, 9963), (72, 10107),

Gene: Morrissey\_16 Start: 9186, Stop: 10171, Start Num: 19

Candidate Starts for Morrissey\_16:

(Start: 19 @9186 has 9 MA's), (25, 9228), (30, 9300), (31, 9306), (32, 9315), (45, 9471), (49, 9495), (50, 9498), (82, 9822), (83, 9837), (87, 9903), (93, 10086), (98, 10161),

Gene: Opie\_15 Start: 9611, Stop: 10443, Start Num: 23

Candidate Starts for Opie\_15:

(Start: 23 @9611 has 11 MA's), (33, 9680), (34, 9683), (45, 9776), (49, 9800), (54, 9836), (60, 9881), (68, 9938), (73, 9980), (74, 9983), (75, 9986), (76, 10013), (78, 10067), (88, 10202), (96, 10370),

Gene: Puppies\_15 Start: 8726, Stop: 9696, Start Num: 18

Candidate Starts for Puppies\_15:

(15, 8477), (Start: 18 @8726 has 3 MA's), (25, 8768), (26, 8795), (28, 8813), (49, 9023), (53, 9047), (62, 9122), (69, 9167), (70, 9170), (98, 9686),

Gene: Reyja\_16 Start: 9079, Stop: 10085, Start Num: 19

Candidate Starts for Reyja\_16:

(Start: 19 @9079 has 9 MA's), (27, 9184), (36, 9319), (39, 9364), (54, 9454), (69, 9577), (92, 9958), (94, 10009), (97, 10039), (98, 10078),

Gene: Santhid\_15 Start: 8945, Stop: 9915, Start Num: 19

Candidate Starts for Santhid\_15:

(Start: 19 @8945 has 9 MA's), (39, 9194), (54, 9284), (57, 9317), (67, 9389), (69, 9407), (92, 9788), (94, 9839), (98, 9908),

Gene: Schnabeltier\_15 Start: 9598, Stop: 10436, Start Num: 23

Candidate Starts for Schnabeltier\_15:

(Start: 23 @9598 has 11 MA's), (33, 9667), (34, 9670), (45, 9769), (49, 9793), (54, 9829), (60, 9874), (73, 9973), (74, 9976), (75, 9979), (76, 10006), (78, 10060), (99, 10417),

Gene: TaronosaurusRx\_15 Start: 9610, Stop: 10442, Start Num: 23

Candidate Starts for TaronosaurusRx\_15:

(Start: 23 @9610 has 11 MA's), (33, 9679), (45, 9775), (54, 9835), (69, 9943), (76, 10012), (78, 10066), (96, 10369), (99, 10423),

Gene: Tarzan\_15 Start: 8933, Stop: 9960, Start Num: 19

Candidate Starts for Tarzan\_15:

(Start: 19 @8933 has 9 MA's), (27, 9029), (39, 9230), (54, 9329), (57, 9362), (66, 9431), (69, 9452), (90, 9812), (92, 9833), (98, 9953),

Gene: Trine\_15 Start: 8732, Stop: 9684, Start Num: 19

Candidate Starts for Trine\_15:

(Start: 19 @8732 has 9 MA's), (24, 8768), (35, 8867), (43, 8948), (47, 8996), (49, 9002), (55, 9053), (59, 9077), (80, 9305), (82, 9329), (98, 9668),

Gene: Upyo\_15 Start: 8842, Stop: 9809, Start Num: 20

Candidate Starts for Upyo\_15:

(16, 8647), (Start: 20 @8842 has 1 MA's), (42, 9082), (46, 9121), (48, 9130), (56, 9199), (62, 9232), (65, 9253), (82, 9460), (85, 9526), (86, 9538), (98, 9799),

Gene: Widow\_15 Start: 8717, Stop: 9687, Start Num: 18

Candidate Starts for Widow\_15:

(15, 8468), (Start: 18 @8717 has 3 MA's), (25, 8759), (26, 8786), (28, 8804), (37, 8918), (49, 9014), (53, 9038), (62, 9113), (69, 9158), (70, 9161), (98, 9677),