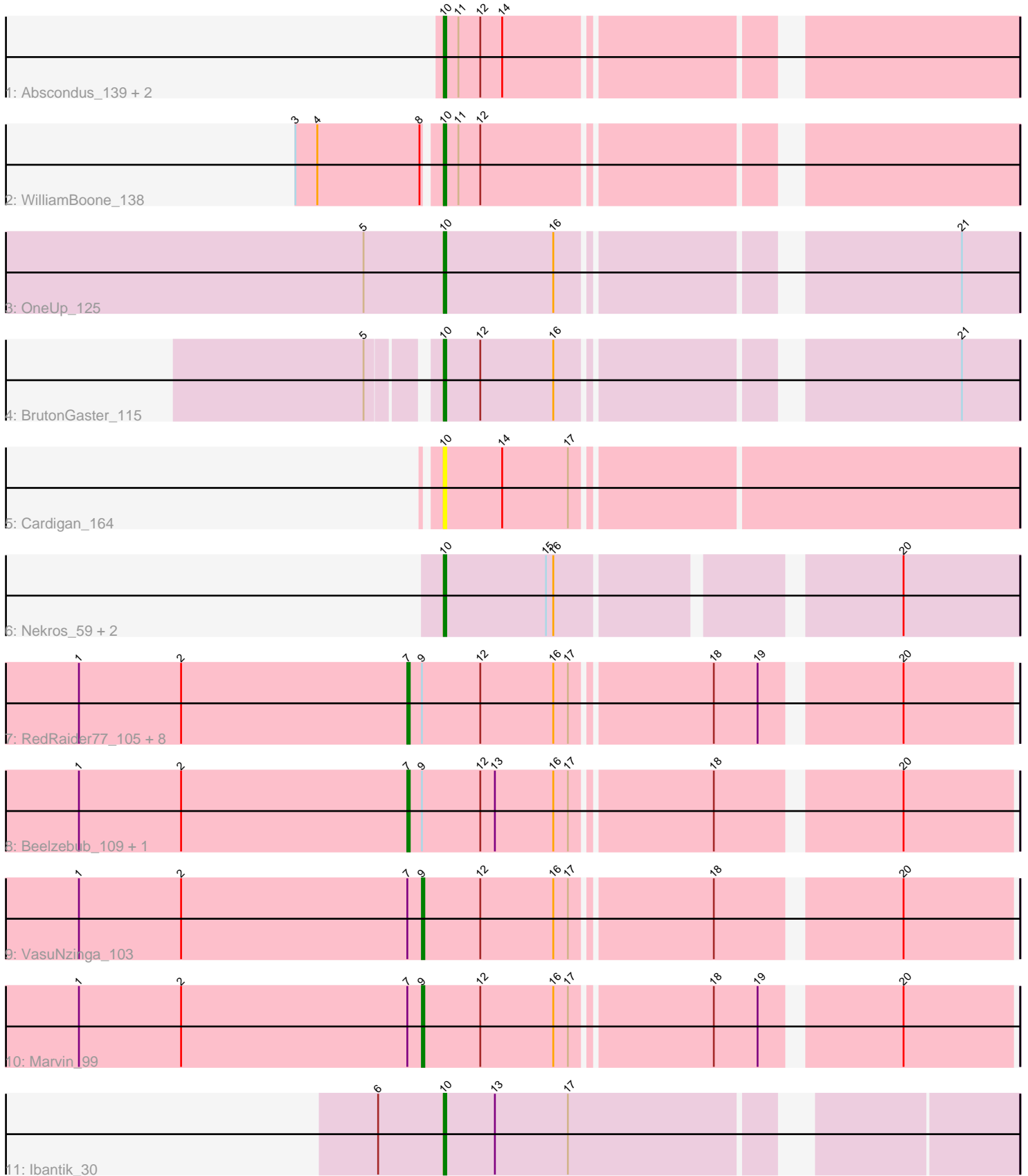


Pham 296907



Note: Tracks are now grouped by subcluster and scaled. Switching in subcluster is indicated by changes in track color. Track scale is now set by default to display the region 30 bp upstream of start 1 to 30 bp downstream of the last possible start. If this default region is judged to be packed too tightly with annotated starts, the track will be further scaled to only show that region of the ORF with annotated starts. This action will be indicated by adding "Zoomed" to the title. For starts, yellow indicates the location of called starts comprised solely of Glimmer/GeneMark auto-annotations, green indicates the location of called starts with at least 1 manual gene annotation.

Pham 296907 Report

This analysis was run 04/25/26 on database version 644.

Pham number 296907 has 24 members, 4 are drafts.

Phages represented in each track:

- Track 1 : Abscondus_139, Dusty_138, Geeche_140
- Track 2 : WilliamBoone_138
- Track 3 : OneUp_125
- Track 4 : BrutonGaster_115
- Track 5 : Cardigan_164
- Track 6 : Nekros_59, Thibault_54, Rearden_56
- Track 7 : RedRaider77_105, JoieB_106, Blackbeetle_106, Gattaca_104, GoongGoong_105, Raela_107, Poise_106, Tesla_101, MosMoris_101
- Track 8 : Beelzebub_109, Pringar_101
- Track 9 : VasuNzinga_103
- Track 10 : Marvin_99
- Track 11 : Ibantik_30

Summary of Final Annotations (See graph section above for start numbers):

The start number called the most often in the published annotations is 7, it was called in 11 of the 20 non-draft genes in the pham.

Genes that call this "Most Annotated" start:

- Beelzebub_109, Blackbeetle_106, Gattaca_104, GoongGoong_105, JoieB_106, MosMoris_101, Poise_106, Pringar_101, Raela_107, RedRaider77_105, Tesla_101,

Genes that have the "Most Annotated" start but do not call it:

- Marvin_99, VasuNzinga_103,

Genes that do not have the "Most Annotated" start:

- Abscondus_139, BrutonGaster_115, Cardigan_164, Dusty_138, Geeche_140, Ibantik_30, Nekros_59, OneUp_125, Rearden_56, Thibault_54, WilliamBoone_138,

Summary by start number:

Start 7:

- Found in 13 of 24 (54.2%) of genes in pham
- Manual Annotations of this start: 11 of 20

- Called 84.6% of time when present
- Phage (with cluster) where this start called: Beelzebub_109 (S), Blackbeetle_106 (S), Gattaca_104 (S), GoongGoong_105 (S), JoieB_106 (S), MosMoris_101 (S), Poise_106 (S), Pringar_101 (S), Raela_107 (S), RedRaider77_105 (S), Tesla_101 (S),

Start 9:

- Found in 13 of 24 (54.2%) of genes in pham
- Manual Annotations of this start: 2 of 20
- Called 15.4% of time when present
- Phage (with cluster) where this start called: Marvin_99 (S), VasuNzinga_103 (S),

Start 10:

- Found in 11 of 24 (45.8%) of genes in pham
- Manual Annotations of this start: 7 of 20
- Called 100.0% of time when present
- Phage (with cluster) where this start called: Abscondus_139 (CQ1), BrutonGaster_115 (CQ2), Cardigan_164 (DD), Dusty_138 (CQ1), Geeche_140 (CQ1), Ibantik_30 (singleton), Nekros_59 (J), OneUp_125 (CQ2), Rearden_56 (J), Thibault_54 (J), WilliamBoone_138 (CQ1),

Summary by clusters:

There are 6 clusters represented in this pham: singleton, DD, J, S, CQ2, CQ1,

Info for manual annotations of cluster CQ1:

- Start number 10 was manually annotated 3 times for cluster CQ1.

Info for manual annotations of cluster CQ2:

- Start number 10 was manually annotated 2 times for cluster CQ2.

Info for manual annotations of cluster J:

- Start number 10 was manually annotated 1 time for cluster J.

Info for manual annotations of cluster S:

- Start number 7 was manually annotated 11 times for cluster S.
- Start number 9 was manually annotated 2 times for cluster S.

Gene Information:

Gene: Abscondus_139 Start: 76350, Stop: 76565, Start Num: 10

Candidate Starts for Abscondus_139:

(Start: 10 @76350 has 7 MA's), (11, 76356), (12, 76365), (14, 76374),

Gene: Beelzebub_109 Start: 59235, Stop: 59002, Start Num: 7

Candidate Starts for Beelzebub_109:

(1, 59370), (2, 59328), (Start: 7 @59235 has 11 MA's), (Start: 9 @59229 has 2 MA's), (12, 59205), (13, 59199), (16, 59175), (17, 59169), (18, 59115), (20, 59046),

Gene: Blackbeetle_106 Start: 58732, Stop: 58499, Start Num: 7

Candidate Starts for Blackbeetle_106:

(1, 58867), (2, 58825), (Start: 7 @58732 has 11 MA's), (Start: 9 @58726 has 2 MA's), (12, 58702), (16, 58672), (17, 58666), (18, 58612), (19, 58594), (20, 58543),

Gene: BrutonGaster_115 Start: 71154, Stop: 71369, Start Num: 10

Candidate Starts for BrutonGaster_115:

(5, 71130), (Start: 10 @71154 has 7 MA's), (12, 71169), (16, 71199), (21, 71346),

Gene: Cardigan_164 Start: 86618, Stop: 86845, Start Num: 10

Candidate Starts for Cardigan_164:

(Start: 10 @86618 has 7 MA's), (14, 86642), (17, 86669),

Gene: Dusty_138 Start: 76177, Stop: 76392, Start Num: 10

Candidate Starts for Dusty_138:

(Start: 10 @76177 has 7 MA's), (11, 76183), (12, 76192), (14, 76201),

Gene: Gattaca_104 Start: 59145, Stop: 58912, Start Num: 7

Candidate Starts for Gattaca_104:

(1, 59280), (2, 59238), (Start: 7 @59145 has 11 MA's), (Start: 9 @59139 has 2 MA's), (12, 59115), (16, 59085), (17, 59079), (18, 59025), (19, 59007), (20, 58956),

Gene: Geeche_140 Start: 76400, Stop: 76615, Start Num: 10

Candidate Starts for Geeche_140:

(Start: 10 @76400 has 7 MA's), (11, 76406), (12, 76415), (14, 76424),

Gene: GoongGoong_105 Start: 58950, Stop: 58717, Start Num: 7

Candidate Starts for GoongGoong_105:

(1, 59085), (2, 59043), (Start: 7 @58950 has 11 MA's), (Start: 9 @58944 has 2 MA's), (12, 58920), (16, 58890), (17, 58884), (18, 58830), (19, 58812), (20, 58761),

Gene: Ibantik_30 Start: 14992, Stop: 14777, Start Num: 10

Candidate Starts for Ibantik_30:

(6, 15019), (Start: 10 @14992 has 7 MA's), (13, 14971), (17, 14941),

Gene: JoieB_106 Start: 59319, Stop: 59086, Start Num: 7

Candidate Starts for JoieB_106:

(1, 59454), (2, 59412), (Start: 7 @59319 has 11 MA's), (Start: 9 @59313 has 2 MA's), (12, 59289), (16, 59259), (17, 59253), (18, 59199), (19, 59181), (20, 59130),

Gene: Marvin_99 Start: 58798, Stop: 58571, Start Num: 9

Candidate Starts for Marvin_99:

(1, 58939), (2, 58897), (Start: 7 @58804 has 11 MA's), (Start: 9 @58798 has 2 MA's), (12, 58774), (16, 58744), (17, 58738), (18, 58684), (19, 58666), (20, 58615),

Gene: MosMoris_101 Start: 59151, Stop: 58918, Start Num: 7

Candidate Starts for MosMoris_101:

(1, 59286), (2, 59244), (Start: 7 @59151 has 11 MA's), (Start: 9 @59145 has 2 MA's), (12, 59121), (16, 59091), (17, 59085), (18, 59031), (19, 59013), (20, 58962),

Gene: Nekros_59 Start: 45877, Stop: 45659, Start Num: 10

Candidate Starts for Nekros_59:

(Start: 10 @45877 has 7 MA's), (15, 45835), (16, 45832), (20, 45706),

Gene: OneUp_125 Start: 75136, Stop: 75351, Start Num: 10
Candidate Starts for OneUp_125:
(5, 75103), (Start: 10 @75136 has 7 MA's), (16, 75181), (21, 75328),

Gene: Poise_106 Start: 58732, Stop: 58499, Start Num: 7
Candidate Starts for Poise_106:
(1, 58867), (2, 58825), (Start: 7 @58732 has 11 MA's), (Start: 9 @58726 has 2 MA's), (12, 58702), (16, 58672), (17, 58666), (18, 58612), (19, 58594), (20, 58543),

Gene: Pringar_101 Start: 58522, Stop: 58289, Start Num: 7
Candidate Starts for Pringar_101:
(1, 58657), (2, 58615), (Start: 7 @58522 has 11 MA's), (Start: 9 @58516 has 2 MA's), (12, 58492), (13, 58486), (16, 58462), (17, 58456), (18, 58402), (20, 58333),

Gene: Raela_107 Start: 59287, Stop: 59054, Start Num: 7
Candidate Starts for Raela_107:
(1, 59422), (2, 59380), (Start: 7 @59287 has 11 MA's), (Start: 9 @59281 has 2 MA's), (12, 59257), (16, 59227), (17, 59221), (18, 59167), (19, 59149), (20, 59098),

Gene: Rearden_56 Start: 43382, Stop: 43164, Start Num: 10
Candidate Starts for Rearden_56:
(Start: 10 @43382 has 7 MA's), (15, 43340), (16, 43337), (20, 43211),

Gene: RedRaider77_105 Start: 58680, Stop: 58447, Start Num: 7
Candidate Starts for RedRaider77_105:
(1, 58815), (2, 58773), (Start: 7 @58680 has 11 MA's), (Start: 9 @58674 has 2 MA's), (12, 58650), (16, 58620), (17, 58614), (18, 58560), (19, 58542), (20, 58491),

Gene: Tesla_101 Start: 58527, Stop: 58294, Start Num: 7
Candidate Starts for Tesla_101:
(1, 58662), (2, 58620), (Start: 7 @58527 has 11 MA's), (Start: 9 @58521 has 2 MA's), (12, 58497), (16, 58467), (17, 58461), (18, 58407), (19, 58389), (20, 58338),

Gene: Thibault_54 Start: 44229, Stop: 44011, Start Num: 10
Candidate Starts for Thibault_54:
(Start: 10 @44229 has 7 MA's), (15, 44187), (16, 44184), (20, 44058),

Gene: VasuNzinga_103 Start: 58610, Stop: 58383, Start Num: 9
Candidate Starts for VasuNzinga_103:
(1, 58751), (2, 58709), (Start: 7 @58616 has 11 MA's), (Start: 9 @58610 has 2 MA's), (12, 58586), (16, 58556), (17, 58550), (18, 58496), (20, 58427),

Gene: WilliamBoone_138 Start: 74263, Stop: 74478, Start Num: 10
Candidate Starts for WilliamBoone_138:
(3, 74206), (4, 74215), (8, 74257), (Start: 10 @74263 has 7 MA's), (11, 74269), (12, 74278),