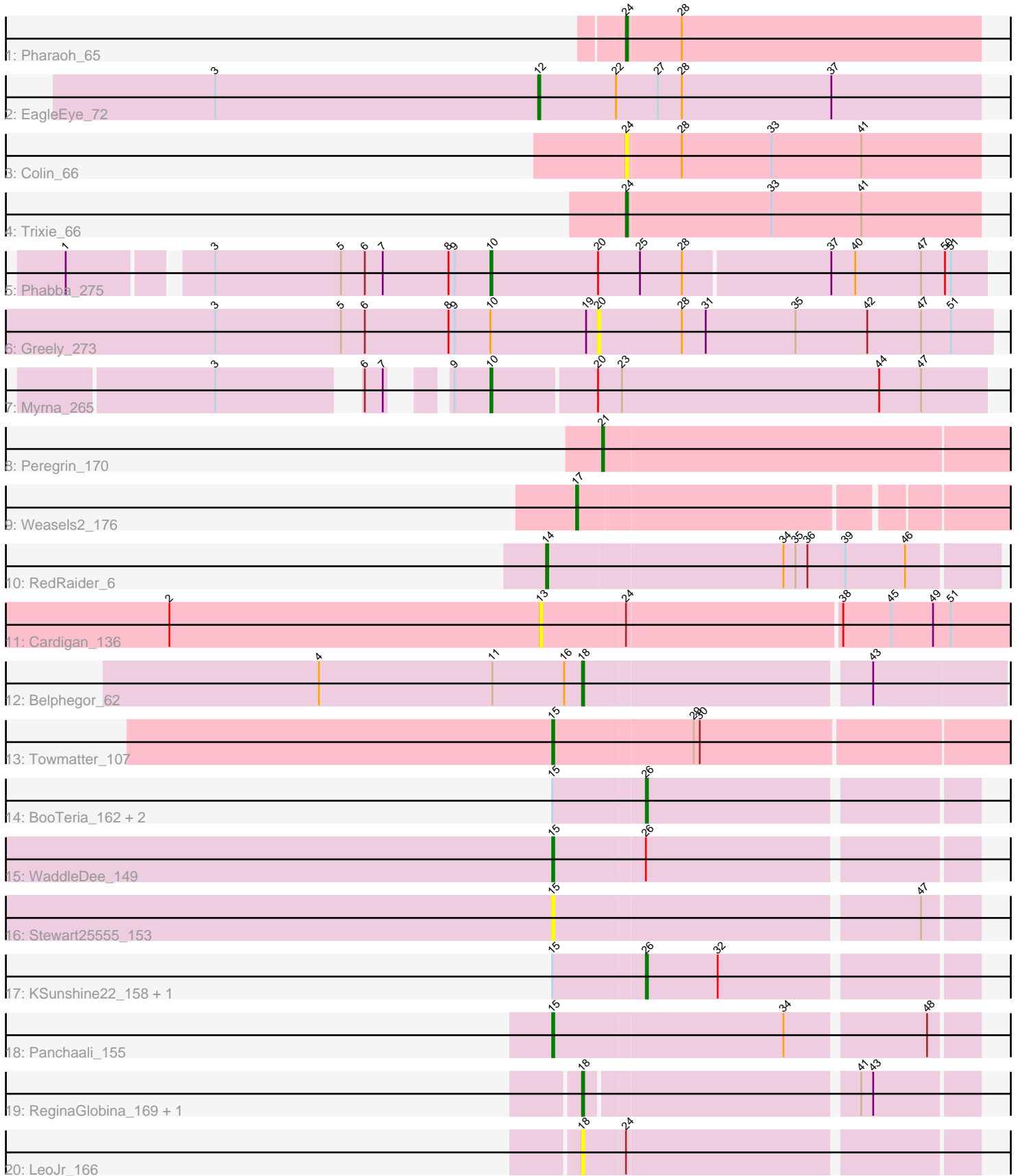


Pham 296909



Note: Tracks are now grouped by subcluster and scaled. Switching in subcluster is indicated by changes in track color. Track scale is now set by default to display the region 30 bp upstream of start 1 to 30 bp downstream of the last possible start. If this default region is judged to be packed too tightly with annotated starts, the track will be further scaled to only show that region of the ORF with annotated starts. This action will be indicated by adding "Zoomed" to the title. For starts, yellow indicates the location of called starts comprised solely of Glimmer/GeneMark auto-annotations, green indicates the location of called starts with at least 1 manual gene annotation.

## Pham 296909 Report

This analysis was run 04/25/26 on database version 644.

Pham number 296909 has 24 members, 9 are drafts.

Phages represented in each track:

- Track 1 : Pharaoh\_65
- Track 2 : EagleEye\_72
- Track 3 : Colin\_66
- Track 4 : Trixie\_66
- Track 5 : Phabba\_275
- Track 6 : Greely\_273
- Track 7 : Myrna\_265
- Track 8 : Peregrin\_170
- Track 9 : Weasels2\_176
- Track 10 : RedRaider\_6
- Track 11 : Cardigan\_136
- Track 12 : Belphegor\_62
- Track 13 : Towmatter\_107
- Track 14 : BooTeria\_162, Emmetator\_156, DunneganBoMo\_153
- Track 15 : WaddleDee\_149
- Track 16 : Stewart25555\_153
- Track 17 : KSunshine22\_158, Ellewin\_153
- Track 18 : Panchaali\_155
- Track 19 : ReginaGlobina\_169, Atuin\_156
- Track 20 : LeoJr\_166

### ***Summary of Final Annotations (See graph section above for start numbers):***

The start number called the most often in the published annotations is 15, it was called in 3 of the 15 non-draft genes in the pham.

Genes that call this "Most Annotated" start:

- Panchaali\_155, Stewart25555\_153, Towmatter\_107, WaddleDee\_149,

Genes that have the "Most Annotated" start but do not call it:

- BooTeria\_162, DunneganBoMo\_153, Ellewin\_153, Emmetator\_156, KSunshine22\_158,

Genes that do not have the "Most Annotated" start:

- Atuin\_156, Belphegor\_62, Cardigan\_136, Colin\_66, EagleEye\_72, Greely\_273, LeoJr\_166, Myrna\_265, Peregrin\_170, Phabba\_275, Pharaoh\_65, RedRaider\_6, ReginaGlobina\_169, Trixie\_66, Weasels2\_176,

### Summary by start number:

#### Start 10:

- Found in 3 of 24 ( 12.5% ) of genes in pham
- Manual Annotations of this start: 2 of 15
- Called 66.7% of time when present
- Phage (with cluster) where this start called: Myrna\_265 (C2), Phabba\_275 (C2),

#### Start 12:

- Found in 1 of 24 ( 4.2% ) of genes in pham
- Manual Annotations of this start: 1 of 15
- Called 100.0% of time when present
- Phage (with cluster) where this start called: EagleEye\_72 (A16),

#### Start 13:

- Found in 1 of 24 ( 4.2% ) of genes in pham
- No Manual Annotations of this start.
- Called 100.0% of time when present
- Phage (with cluster) where this start called: Cardigan\_136 (DD),

#### Start 14:

- Found in 1 of 24 ( 4.2% ) of genes in pham
- Manual Annotations of this start: 1 of 15
- Called 100.0% of time when present
- Phage (with cluster) where this start called: RedRaider\_6 (CR3),

#### Start 15:

- Found in 9 of 24 ( 37.5% ) of genes in pham
- Manual Annotations of this start: 3 of 15
- Called 44.4% of time when present
- Phage (with cluster) where this start called: Panchaali\_155 (FC), Stewart25555\_153 (FC), Towmatter\_107 (DL), WaddleDee\_149 (FC),

#### Start 17:

- Found in 1 of 24 ( 4.2% ) of genes in pham
- Manual Annotations of this start: 1 of 15
- Called 100.0% of time when present
- Phage (with cluster) where this start called: Weasels2\_176 (CB),

#### Start 18:

- Found in 4 of 24 ( 16.7% ) of genes in pham
- Manual Annotations of this start: 2 of 15
- Called 100.0% of time when present
- Phage (with cluster) where this start called: Atuin\_156 (FC), Belphegor\_62 (DE2), LeoJr\_166 (FC), ReginaGlobina\_169 (FC),

#### Start 20:

- Found in 3 of 24 ( 12.5% ) of genes in pham
- No Manual Annotations of this start.

- Called 33.3% of time when present
- Phage (with cluster) where this start called: Greely\_273 (C2),

Start 21:

- Found in 1 of 24 ( 4.2% ) of genes in pham
- Manual Annotations of this start: 1 of 15
- Called 100.0% of time when present
- Phage (with cluster) where this start called: Peregrin\_170 (CB),

Start 24:

- Found in 5 of 24 ( 20.8% ) of genes in pham
- Manual Annotations of this start: 2 of 15
- Called 60.0% of time when present
- Phage (with cluster) where this start called: Colin\_66 (A2), Pharaoh\_65 (A12), Trixie\_66 (A2),

Start 26:

- Found in 6 of 24 ( 25.0% ) of genes in pham
- Manual Annotations of this start: 2 of 15
- Called 83.3% of time when present
- Phage (with cluster) where this start called: BooTeria\_162 (FC), DunneganBoMo\_153 (FC), Ellewin\_153 (FC), Emmetator\_156 (FC), KSunshine22\_158 (FC),

### **Summary by clusters:**

There are 10 clusters represented in this pham: CR3, DL, A16, A12, CB, DE2, DD, FC, C2, A2,

Info for manual annotations of cluster A12:

- Start number 24 was manually annotated 1 time for cluster A12.

Info for manual annotations of cluster A16:

- Start number 12 was manually annotated 1 time for cluster A16.

Info for manual annotations of cluster A2:

- Start number 24 was manually annotated 1 time for cluster A2.

Info for manual annotations of cluster C2:

- Start number 10 was manually annotated 2 times for cluster C2.

Info for manual annotations of cluster CB:

- Start number 17 was manually annotated 1 time for cluster CB.
- Start number 21 was manually annotated 1 time for cluster CB.

Info for manual annotations of cluster CR3:

- Start number 14 was manually annotated 1 time for cluster CR3.

Info for manual annotations of cluster DE2:

- Start number 18 was manually annotated 1 time for cluster DE2.

Info for manual annotations of cluster DL:

- Start number 15 was manually annotated 1 time for cluster DL.

Info for manual annotations of cluster FC:

- Start number 15 was manually annotated 2 times for cluster FC.
- Start number 18 was manually annotated 1 time for cluster FC.
- Start number 26 was manually annotated 2 times for cluster FC.

### ***Gene Information:***

Gene: Atuin\_156 Start: 110180, Stop: 110365, Start Num: 18

Candidate Starts for Atuin\_156:

(Start: 18 @110180 has 2 MA's), (41, 110309), (43, 110315),

Gene: Belphegor\_62 Start: 49602, Stop: 49805, Start Num: 18

Candidate Starts for Belphegor\_62:

(4, 49470), (11, 49557), (16, 49593), (Start: 18 @49602 has 2 MA's), (43, 49740),

Gene: BooTeria\_162 Start: 107851, Stop: 108009, Start Num: 26

Candidate Starts for BooTeria\_162:

(Start: 15 @107806 has 3 MA's), (Start: 26 @107851 has 2 MA's),

Gene: Cardigan\_136 Start: 76837, Stop: 77085, Start Num: 13

Candidate Starts for Cardigan\_136:

(2, 76651), (13, 76837), (Start: 24 @76879 has 2 MA's), (38, 76984), (45, 77008), (49, 77029), (51, 77038),

Gene: Colin\_66 Start: 42014, Stop: 41838, Start Num: 24

Candidate Starts for Colin\_66:

(Start: 24 @42014 has 2 MA's), (28, 41987), (33, 41942), (41, 41897),

Gene: DunneganBoMo\_153 Start: 107120, Stop: 107278, Start Num: 26

Candidate Starts for DunneganBoMo\_153:

(Start: 15 @107075 has 3 MA's), (Start: 26 @107120 has 2 MA's),

Gene: EagleEye\_72 Start: 41949, Stop: 41728, Start Num: 12

Candidate Starts for EagleEye\_72:

(3, 42111), (Start: 12 @41949 has 1 MA's), (22, 41910), (27, 41889), (28, 41877), (37, 41802),

Gene: Ellewin\_153 Start: 107224, Stop: 107382, Start Num: 26

Candidate Starts for Ellewin\_153:

(Start: 15 @107179 has 3 MA's), (Start: 26 @107224 has 2 MA's), (32, 107260),

Gene: Emmetator\_156 Start: 107433, Stop: 107591, Start Num: 26

Candidate Starts for Emmetator\_156:

(Start: 15 @107388 has 3 MA's), (Start: 26 @107433 has 2 MA's),

Gene: Greely\_273 Start: 162469, Stop: 162666, Start Num: 20

Candidate Starts for Greely\_273:

(3, 162277), (5, 162340), (6, 162352), (8, 162394), (9, 162397), (Start: 10 @162415 has 2 MA's), (19, 162463), (20, 162469), (28, 162511), (31, 162523), (35, 162568), (42, 162604), (47, 162631), (51, 162646),

Gene: KSunshine22\_158 Start: 108183, Stop: 108341, Start Num: 26  
Candidate Starts for KSunshine22\_158:  
(Start: 15 @108138 has 3 MA's), (Start: 26 @108183 has 2 MA's), (32, 108219),

Gene: LeoJr\_166 Start: 110788, Stop: 110976, Start Num: 18  
Candidate Starts for LeoJr\_166:  
(Start: 18 @110788 has 2 MA's), (Start: 24 @110809 has 2 MA's),

Gene: Myrna\_265 Start: 162813, Stop: 163058, Start Num: 10  
Candidate Starts for Myrna\_265:  
(3, 162711), (6, 162771), (7, 162780), (9, 162795), (Start: 10 @162813 has 2 MA's), (20, 162864), (23, 162876), (44, 163005), (47, 163026),

Gene: Panchaali\_155 Start: 107904, Stop: 108107, Start Num: 15  
Candidate Starts for Panchaali\_155:  
(Start: 15 @107904 has 3 MA's), (34, 108018), (48, 108084),

Gene: Peregrin\_170 Start: 91883, Stop: 92095, Start Num: 21  
Candidate Starts for Peregrin\_170:  
(Start: 21 @91883 has 1 MA's),

Gene: Phabba\_275 Start: 161775, Stop: 162020, Start Num: 10  
Candidate Starts for Phabba\_275:  
(1, 161574), (3, 161637), (5, 161700), (6, 161712), (7, 161721), (8, 161754), (9, 161757), (Start: 10 @161775 has 2 MA's), (20, 161829), (25, 161850), (28, 161871), (37, 161943), (40, 161955), (47, 161988), (50, 162000), (51, 162003),

Gene: Pharaoh\_65 Start: 41502, Stop: 41326, Start Num: 24  
Candidate Starts for Pharaoh\_65:  
(Start: 24 @41502 has 2 MA's), (28, 41475),

Gene: RedRaider\_6 Start: 4303, Stop: 4524, Start Num: 14  
Candidate Starts for RedRaider\_6:  
(Start: 14 @4303 has 1 MA's), (34, 4420), (35, 4426), (36, 4432), (39, 4450), (46, 4480),

Gene: ReginaGlobina\_169 Start: 112062, Stop: 112247, Start Num: 18  
Candidate Starts for ReginaGlobina\_169:  
(Start: 18 @112062 has 2 MA's), (41, 112191), (43, 112197),

Gene: Stewart25555\_153 Start: 108142, Stop: 108345, Start Num: 15  
Candidate Starts for Stewart25555\_153:  
(Start: 15 @108142 has 3 MA's), (47, 108319),

Gene: Towmatter\_107 Start: 68561, Stop: 68797, Start Num: 15  
Candidate Starts for Towmatter\_107:  
(Start: 15 @68561 has 3 MA's), (29, 68630), (30, 68633),

Gene: Trixie\_66 Start: 41830, Stop: 41654, Start Num: 24  
Candidate Starts for Trixie\_66:  
(Start: 24 @41830 has 2 MA's), (33, 41758), (41, 41713),

Gene: WaddleDee\_149 Start: 106261, Stop: 106464, Start Num: 15

Candidate Starts for WaddleDee\_149:  
(Start: 15 @106261 has 3 MA's), (Start: 26 @106306 has 2 MA's),

Gene: Weasels2\_176 Start: 96304, Stop: 96510, Start Num: 17  
Candidate Starts for Weasels2\_176:  
(Start: 17 @96304 has 1 MA's),