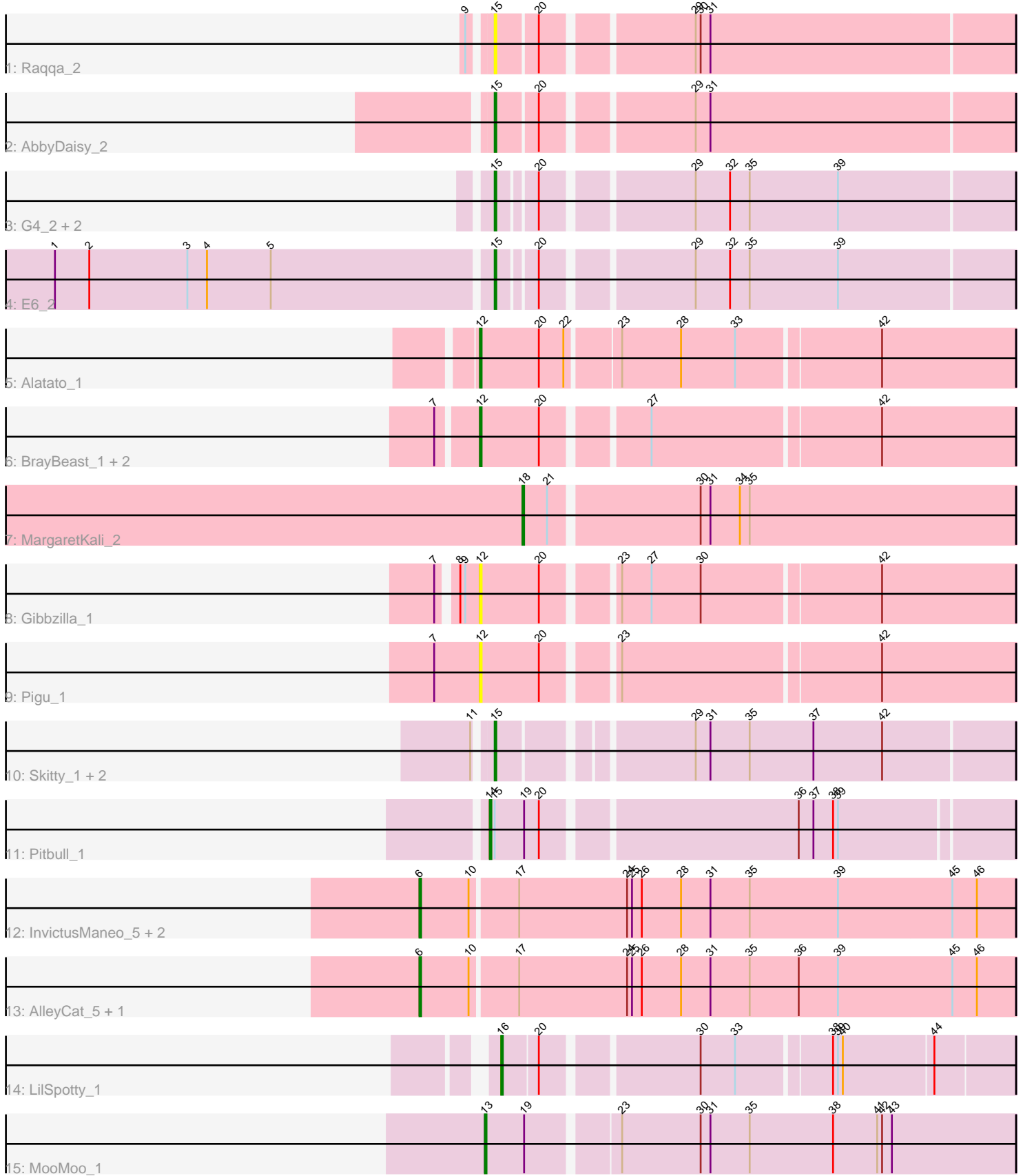


Pham 296914



Note: Tracks are now grouped by subcluster and scaled. Switching in subcluster is indicated by changes in track color. Track scale is now set by default to display the region 30 bp upstream of start 1 to 30 bp downstream of the last possible start. If this default region is judged to be packed too tightly with annotated starts, the track will be further scaled to only show that region of the ORF with annotated starts. This action will be indicated by adding "Zoomed" to the title. For starts, yellow indicates the location of called starts comprised solely of Glimmer/GeneMark auto-annotations, green indicates the location of called starts with at least 1 manual gene annotation.

Pham 296914 Report

This analysis was run 04/25/26 on database version 644.

Pham number 296914 has 24 members, 5 are drafts.

Phages represented in each track:

- Track 1 : Raqqa_2
- Track 2 : AbbyDaisy_2
- Track 3 : G4_2, Doucette_2, B22_2
- Track 4 : E6_2
- Track 5 : Alatato_1
- Track 6 : BrayBeast_1, JeanClaude_1, Sarge_1
- Track 7 : MargaretKali_2
- Track 8 : Gibbzilla_1
- Track 9 : Pigu_1
- Track 10 : Skitty_1, Merpity_1, MrSmee_1
- Track 11 : Pitbull_1
- Track 12 : InvictusManeo_5, Kratio_4, Larva_5
- Track 13 : AlleyCat_5, Psycho_5
- Track 14 : LilSpotty_1
- Track 15 : MooMoo_1

Summary of Final Annotations (See graph section above for start numbers):

The start number called the most often in the published annotations is 15, it was called in 7 of the 19 non-draft genes in the pham.

Genes that call this "Most Annotated" start:

- AbbyDaisy_2, B22_2, Doucette_2, E6_2, G4_2, Merpity_1, MrSmee_1, Raqqa_2, Skitty_1,

Genes that have the "Most Annotated" start but do not call it:

- Pitbull_1,

Genes that do not have the "Most Annotated" start:

- Alatato_1, AlleyCat_5, BrayBeast_1, Gibbzilla_1, InvictusManeo_5, JeanClaude_1, Kratio_4, Larva_5, LilSpotty_1, MargaretKali_2, MooMoo_1, Pigu_1, Psycho_5, Sarge_1,

Summary by start number:

Start 6:

- Found in 5 of 24 (20.8%) of genes in pham
- Manual Annotations of this start: 5 of 19
- Called 100.0% of time when present
- Phage (with cluster) where this start called: AlleyCat_5 (K5), InvictusManeo_5 (K5), Kratio_4 (K5), Larva_5 (K5), Psycho_5 (K5),

Start 12:

- Found in 6 of 24 (25.0%) of genes in pham
- Manual Annotations of this start: 3 of 19
- Called 100.0% of time when present
- Phage (with cluster) where this start called: Alatato_1 (FB), BrayBeast_1 (FB), Gibbzilla_1 (FB), JeanClaude_1 (FB), Pigu_1 (FB), Sarge_1 (FB),

Start 13:

- Found in 1 of 24 (4.2%) of genes in pham
- Manual Annotations of this start: 1 of 19
- Called 100.0% of time when present
- Phage (with cluster) where this start called: MooMoo_1 (singleton),

Start 14:

- Found in 1 of 24 (4.2%) of genes in pham
- Manual Annotations of this start: 1 of 19
- Called 100.0% of time when present
- Phage (with cluster) where this start called: Pitbull_1 (FQ),

Start 15:

- Found in 10 of 24 (41.7%) of genes in pham
- Manual Annotations of this start: 7 of 19
- Called 90.0% of time when present
- Phage (with cluster) where this start called: AbbyDaisy_2 (AY), B22_2 (BW), Doucette_2 (BW), E6_2 (BW), G4_2 (BW), Merpity_1 (FQ), MrSmee_1 (FQ), Raqqa_2 (AY), Skitty_1 (FQ),

Start 16:

- Found in 1 of 24 (4.2%) of genes in pham
- Manual Annotations of this start: 1 of 19
- Called 100.0% of time when present
- Phage (with cluster) where this start called: LilSpotty_1 (singleton),

Start 18:

- Found in 1 of 24 (4.2%) of genes in pham
- Manual Annotations of this start: 1 of 19
- Called 100.0% of time when present
- Phage (with cluster) where this start called: MargaretKali_2 (FB),

Summary by clusters:

There are 6 clusters represented in this pham: FQ, singleton, FB, BW, K5, AY,

Info for manual annotations of cluster AY:

- Start number 15 was manually annotated 1 time for cluster AY.

Info for manual annotations of cluster BW:

- Start number 15 was manually annotated 4 times for cluster BW.

Info for manual annotations of cluster FB:

- Start number 12 was manually annotated 3 times for cluster FB.
- Start number 18 was manually annotated 1 time for cluster FB.

Info for manual annotations of cluster FQ:

- Start number 14 was manually annotated 1 time for cluster FQ.
- Start number 15 was manually annotated 2 times for cluster FQ.

Info for manual annotations of cluster K5:

- Start number 6 was manually annotated 5 times for cluster K5.

Gene Information:

Gene: AbbyDaisy_2 Start: 413, Stop: 712, Start Num: 15

Candidate Starts for AbbyDaisy_2:

(Start: 15 @413 has 7 MA's), (20, 437), (29, 521), (31, 530),

Gene: Alatato_1 Start: 48, Stop: 362, Start Num: 12

Candidate Starts for Alatato_1:

(Start: 12 @48 has 3 MA's), (20, 84), (22, 99), (23, 129), (28, 165), (33, 198), (42, 282),

Gene: AlleyCat_5 Start: 997, Stop: 1356, Start Num: 6

Candidate Starts for AlleyCat_5:

(Start: 6 @997 has 5 MA's), (10, 1027), (17, 1054), (24, 1120), (25, 1123), (26, 1129), (28, 1153), (31, 1171), (35, 1195), (36, 1225), (39, 1249), (45, 1318), (46, 1333),

Gene: B22_2 Start: 706, Stop: 1002, Start Num: 15

Candidate Starts for B22_2:

(Start: 15 @706 has 7 MA's), (20, 727), (29, 811), (32, 832), (35, 844), (39, 898),

Gene: BrayBeast_1 Start: 49, Stop: 357, Start Num: 12

Candidate Starts for BrayBeast_1:

(7, 28), (Start: 12 @49 has 3 MA's), (20, 85), (27, 142), (42, 277),

Gene: Doucette_2 Start: 706, Stop: 1002, Start Num: 15

Candidate Starts for Doucette_2:

(Start: 15 @706 has 7 MA's), (20, 727), (29, 811), (32, 832), (35, 844), (39, 898),

Gene: E6_2 Start: 707, Stop: 1003, Start Num: 15

Candidate Starts for E6_2:

(1, 446), (2, 467), (3, 527), (4, 539), (5, 578), (Start: 15 @707 has 7 MA's), (20, 728), (29, 812), (32, 833), (35, 845), (39, 899),

Gene: G4_2 Start: 706, Stop: 1002, Start Num: 15

Candidate Starts for G4_2:

(Start: 15 @706 has 7 MA's), (20, 727), (29, 811), (32, 832), (35, 844), (39, 898),

Gene: Gibbzilla_1 Start: 49, Stop: 357, Start Num: 12

Candidate Starts for Gibbzilla_1:

(7, 28), (8, 37), (9, 40), (Start: 12 @49 has 3 MA's), (20, 85), (23, 124), (27, 142), (30, 172), (42, 277),

Gene: InvictusManeo_5 Start: 979, Stop: 1338, Start Num: 6

Candidate Starts for InvictusManeo_5:

(Start: 6 @979 has 5 MA's), (10, 1009), (17, 1036), (24, 1102), (25, 1105), (26, 1111), (28, 1135), (31, 1153), (35, 1177), (39, 1231), (45, 1300), (46, 1315),

Gene: JeanClaude_1 Start: 49, Stop: 357, Start Num: 12

Candidate Starts for JeanClaude_1:

(7, 28), (Start: 12 @49 has 3 MA's), (20, 85), (27, 142), (42, 277),

Gene: Kratio_4 Start: 736, Stop: 1095, Start Num: 6

Candidate Starts for Kratio_4:

(Start: 6 @736 has 5 MA's), (10, 766), (17, 793), (24, 859), (25, 862), (26, 868), (28, 892), (31, 910), (35, 934), (39, 988), (45, 1057), (46, 1072),

Gene: Larva_5 Start: 738, Stop: 1097, Start Num: 6

Candidate Starts for Larva_5:

(Start: 6 @738 has 5 MA's), (10, 768), (17, 795), (24, 861), (25, 864), (26, 870), (28, 894), (31, 912), (35, 936), (39, 990), (45, 1059), (46, 1074),

Gene: LilSpotty_1 Start: 54, Stop: 344, Start Num: 16

Candidate Starts for LilSpotty_1:

(Start: 16 @54 has 1 MA's), (20, 75), (30, 162), (33, 183), (38, 237), (39, 240), (40, 243), (44, 297),

Gene: MargaretKali_2 Start: 578, Stop: 871, Start Num: 18

Candidate Starts for MargaretKali_2:

(Start: 18 @578 has 1 MA's), (21, 593), (30, 680), (31, 686), (34, 704), (35, 710),

Gene: Merpity_1 Start: 51, Stop: 347, Start Num: 15

Candidate Starts for Merpity_1:

(11, 45), (Start: 15 @51 has 7 MA's), (29, 156), (31, 165), (35, 189), (37, 228), (42, 270),

Gene: MooMoo_1 Start: 63, Stop: 377, Start Num: 13

Candidate Starts for MooMoo_1:

(Start: 13 @63 has 1 MA's), (19, 87), (23, 138), (30, 186), (31, 192), (35, 216), (38, 267), (41, 294), (42, 297), (43, 303),

Gene: MrSmee_1 Start: 51, Stop: 347, Start Num: 15

Candidate Starts for MrSmee_1:

(11, 45), (Start: 15 @51 has 7 MA's), (29, 156), (31, 165), (35, 189), (37, 228), (42, 270),

Gene: Pigu_1 Start: 55, Stop: 363, Start Num: 12

Candidate Starts for Pigu_1:

(7, 28), (Start: 12 @55 has 3 MA's), (20, 91), (23, 130), (42, 283),

Gene: Pitbull_1 Start: 58, Stop: 360, Start Num: 14

Candidate Starts for Pitbull_1:

(Start: 14 @58 has 1 MA's), (Start: 15 @61 has 7 MA's), (19, 79), (20, 88), (36, 235), (37, 244), (38, 256), (39, 259),

Gene: Psycho_5 Start: 997, Stop: 1356, Start Num: 6

Candidate Starts for Psycho_5:

(Start: 6 @997 has 5 MA's), (10, 1027), (17, 1054), (24, 1120), (25, 1123), (26, 1129), (28, 1153), (31, 1171), (35, 1195), (36, 1225), (39, 1249), (45, 1318), (46, 1333),

Gene: Raqqa_2 Start: 745, Stop: 1044, Start Num: 15

Candidate Starts for Raqqa_2:

(9, 736), (Start: 15 @745 has 7 MA's), (20, 769), (29, 853), (30, 856), (31, 862),

Gene: Sarge_1 Start: 49, Stop: 357, Start Num: 12

Candidate Starts for Sarge_1:

(7, 28), (Start: 12 @49 has 3 MA's), (20, 85), (27, 142), (42, 277),

Gene: Skitty_1 Start: 51, Stop: 347, Start Num: 15

Candidate Starts for Skitty_1:

(11, 45), (Start: 15 @51 has 7 MA's), (29, 156), (31, 165), (35, 189), (37, 228), (42, 270),