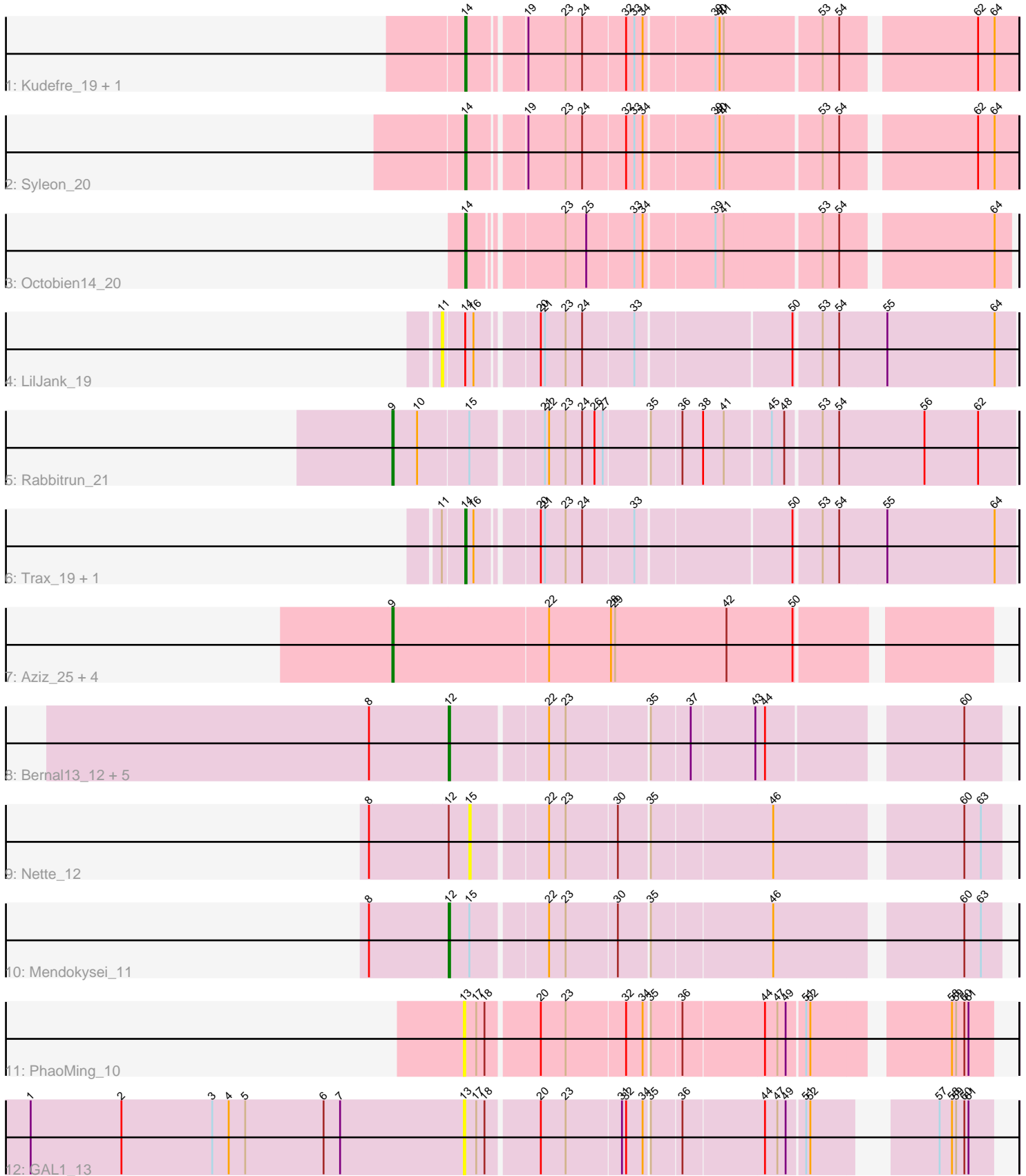


# Pham 296928



Note: Tracks are now grouped by subcluster and scaled. Switching in subcluster is indicated by changes in track color. Track scale is now set by default to display the region 30 bp upstream of start 1 to 30 bp downstream of the last possible start. If this default region is judged to be packed too tightly with annotated starts, the track will be further scaled to only show that region of the ORF with annotated starts. This action will be indicated by adding "Zoomed" to the title. For starts, yellow indicates the location of called starts comprised solely of Glimmer/GeneMark auto-annotations, green indicates the location of called starts with at least 1 manual gene annotation.

## Pham 296928 Report

This analysis was run 04/25/26 on database version 644.

Pham number 296928 has 23 members, 4 are drafts.

Phages represented in each track:

- Track 1 : Kudefre\_19, Sephiroth\_20
- Track 2 : Syleon\_20
- Track 3 : Octobien14\_20
- Track 4 : LilJank\_19
- Track 5 : Rabbitrun\_21
- Track 6 : Trax\_19, Neville\_19
- Track 7 : Aziz\_25, MrMagoo\_25, Estes\_26, GenevaB15\_25, GardenSalsa\_25
- Track 8 : Bernal13\_12, ZenTime222\_12, Nairb\_12, Whitty\_12, RonRayGun\_12, Ibrahim\_12
- Track 9 : Nette\_12
- Track 10 : Mendokysei\_11
- Track 11 : PhaoMing\_10
- Track 12 : GAL1\_13

### ***Summary of Final Annotations (See graph section above for start numbers):***

The start number called the most often in the published annotations is 12, it was called in 7 of the 19 non-draft genes in the pham.

Genes that call this "Most Annotated" start:

- Bernal13\_12, Ibrahim\_12, Mendokysei\_11, Nairb\_12, RonRayGun\_12, Whitty\_12, ZenTime222\_12,

Genes that have the "Most Annotated" start but do not call it:

- Nette\_12,

Genes that do not have the "Most Annotated" start:

- Aziz\_25, Estes\_26, GAL1\_13, GardenSalsa\_25, GenevaB15\_25, Kudefre\_19, LilJank\_19, MrMagoo\_25, Neville\_19, Octobien14\_20, PhaoMing\_10, Rabbitrun\_21, Sephiroth\_20, Syleon\_20, Trax\_19,

### **Summary by start number:**

Start 9:

- Found in 6 of 23 ( 26.1% ) of genes in pham
- Manual Annotations of this start: 6 of 19
- Called 100.0% of time when present
- Phage (with cluster) where this start called: Aziz\_25 (M2), Estes\_26 (M2), GardenSalsa\_25 (M2), GenevaB15\_25 (M2), MrMagoo\_25 (M2), Rabbitrun\_21 (DU2),

Start 11:

- Found in 3 of 23 ( 13.0% ) of genes in pham
- No Manual Annotations of this start.
- Called 33.3% of time when present
- Phage (with cluster) where this start called: LilJank\_19 (DU2),

Start 12:

- Found in 8 of 23 ( 34.8% ) of genes in pham
- Manual Annotations of this start: 7 of 19
- Called 87.5% of time when present
- Phage (with cluster) where this start called: Bernal13\_12 (T), Ibrahim\_12 (T), Mendokysei\_11 (T), Nairb\_12 (T), RonRayGun\_12 (T), Whitty\_12 (T), ZenTime222\_12 (T),

Start 13:

- Found in 2 of 23 ( 8.7% ) of genes in pham
- No Manual Annotations of this start.
- Called 100.0% of time when present
- Phage (with cluster) where this start called: GAL1\_13 (singleton), PhaoMing\_10 (UNK),

Start 14:

- Found in 7 of 23 ( 30.4% ) of genes in pham
- Manual Annotations of this start: 6 of 19
- Called 85.7% of time when present
- Phage (with cluster) where this start called: Kudrefre\_19 (DU1), Neville\_19 (DU2), Octobien14\_20 (DU1), Sephiroth\_20 (DU1), Syleon\_20 (DU1), Trax\_19 (DU2),

Start 15:

- Found in 3 of 23 ( 13.0% ) of genes in pham
- No Manual Annotations of this start.
- Called 33.3% of time when present
- Phage (with cluster) where this start called: Nette\_12 (T),

### **Summary by clusters:**

There are 6 clusters represented in this pham: singleton, T, M2, DU1, DU2, UNK,

Info for manual annotations of cluster DU1:

- Start number 14 was manually annotated 4 times for cluster DU1.

Info for manual annotations of cluster DU2:

- Start number 9 was manually annotated 1 time for cluster DU2.
- Start number 14 was manually annotated 2 times for cluster DU2.

Info for manual annotations of cluster M2:

- Start number 9 was manually annotated 5 times for cluster M2.

Info for manual annotations of cluster T:

- Start number 12 was manually annotated 7 times for cluster T.

### **Gene Information:**

Gene: Aziz\_25 Start: 12434, Stop: 12850, Start Num: 9

Candidate Starts for Aziz\_25:

(Start: 9 @12434 has 6 MA's), (22, 12545), (28, 12590), (29, 12593), (42, 12674), (50, 12722),

Gene: Bernal13\_12 Start: 9006, Stop: 9371, Start Num: 12

Candidate Starts for Bernal13\_12:

(8, 8949), (Start: 12 @9006 has 7 MA's), (22, 9072), (23, 9084), (35, 9141), (37, 9168), (43, 9213), (44, 9219), (60, 9345),

Gene: Estes\_26 Start: 12571, Stop: 12987, Start Num: 9

Candidate Starts for Estes\_26:

(Start: 9 @12571 has 6 MA's), (22, 12682), (28, 12727), (29, 12730), (42, 12811), (50, 12859),

Gene: GAL1\_13 Start: 8895, Stop: 9233, Start Num: 13

Candidate Starts for GAL1\_13:

(1, 8580), (2, 8646), (3, 8712), (4, 8724), (5, 8736), (6, 8793), (7, 8805), (13, 8895), (17, 8904), (18, 8910), (20, 8946), (23, 8964), (31, 9003), (32, 9006), (34, 9018), (35, 9021), (36, 9042), (44, 9099), (47, 9108), (49, 9114), (51, 9126), (52, 9129), (57, 9195), (58, 9204), (59, 9207), (60, 9213), (61, 9216),

Gene: GardenSalsa\_25 Start: 12407, Stop: 12823, Start Num: 9

Candidate Starts for GardenSalsa\_25:

(Start: 9 @12407 has 6 MA's), (22, 12518), (28, 12563), (29, 12566), (42, 12647), (50, 12695),

Gene: GenevaB15\_25 Start: 12434, Stop: 12850, Start Num: 9

Candidate Starts for GenevaB15\_25:

(Start: 9 @12434 has 6 MA's), (22, 12545), (28, 12590), (29, 12593), (42, 12674), (50, 12722),

Gene: Ibrahim\_12 Start: 9006, Stop: 9371, Start Num: 12

Candidate Starts for Ibrahim\_12:

(8, 8949), (Start: 12 @9006 has 7 MA's), (22, 9072), (23, 9084), (35, 9141), (37, 9168), (43, 9213), (44, 9219), (60, 9345),

Gene: Kudetre\_19 Start: 11452, Stop: 11817, Start Num: 14

Candidate Starts for Kudetre\_19:

(Start: 14 @11452 has 6 MA's), (19, 11488), (23, 11515), (24, 11527), (32, 11557), (33, 11563), (34, 11569), (39, 11617), (40, 11620), (41, 11623), (53, 11689), (54, 11701), (62, 11788), (64, 11800),

Gene: LilJank\_19 Start: 11313, Stop: 11699, Start Num: 11

Candidate Starts for LilJank\_19:

(11, 11313), (Start: 14 @11328 has 6 MA's), (16, 11334), (20, 11373), (21, 11376), (23, 11391), (24, 11403), (33, 11439), (50, 11544), (53, 11562), (54, 11574), (55, 11607), (64, 11685),

Gene: Mendokysei\_11 Start: 8981, Stop: 9349, Start Num: 12

Candidate Starts for Mendokysei\_11:

(8, 8924), (Start: 12 @8981 has 7 MA's), (15, 8996), (22, 9047), (23, 9059), (30, 9095), (35, 9116), (46, 9200), (60, 9323), (63, 9335),

Gene: MrMagoo\_25 Start: 12407, Stop: 12823, Start Num: 9

Candidate Starts for MrMagoo\_25:

(Start: 9 @12407 has 6 MA's), (22, 12518), (28, 12563), (29, 12566), (42, 12647), (50, 12695),

Gene: Nairb\_12 Start: 9006, Stop: 9371, Start Num: 12

Candidate Starts for Nairb\_12:

(8, 8949), (Start: 12 @9006 has 7 MA's), (22, 9072), (23, 9084), (35, 9141), (37, 9168), (43, 9213), (44, 9219), (60, 9345),

Gene: Nette\_12 Start: 9005, Stop: 9358, Start Num: 15

Candidate Starts for Nette\_12:

(8, 8933), (Start: 12 @8990 has 7 MA's), (15, 9005), (22, 9056), (23, 9068), (30, 9104), (35, 9125), (46, 9209), (60, 9332), (63, 9344),

Gene: Neville\_19 Start: 11277, Stop: 11648, Start Num: 14

Candidate Starts for Neville\_19:

(11, 11262), (Start: 14 @11277 has 6 MA's), (16, 11283), (20, 11322), (21, 11325), (23, 11340), (24, 11352), (33, 11388), (50, 11493), (53, 11511), (54, 11523), (55, 11556), (64, 11634),

Gene: Octobien14\_20 Start: 12509, Stop: 12865, Start Num: 14

Candidate Starts for Octobien14\_20:

(Start: 14 @12509 has 6 MA's), (23, 12569), (25, 12584), (33, 12617), (34, 12623), (39, 12671), (41, 12677), (53, 12743), (54, 12755), (64, 12854),

Gene: PhaoMing\_10 Start: 7503, Stop: 7853, Start Num: 13

Candidate Starts for PhaoMing\_10:

(13, 7503), (17, 7512), (18, 7518), (20, 7554), (23, 7572), (32, 7614), (34, 7626), (35, 7629), (36, 7650), (44, 7707), (47, 7716), (49, 7722), (51, 7734), (52, 7737), (58, 7824), (59, 7827), (60, 7833), (61, 7836),

Gene: Rabbitrun\_21 Start: 11781, Stop: 12206, Start Num: 9

Candidate Starts for Rabbitrun\_21:

(Start: 9 @11781 has 6 MA's), (10, 11799), (15, 11835), (21, 11883), (22, 11886), (23, 11898), (24, 11910), (26, 11919), (27, 11925), (35, 11955), (36, 11976), (38, 11991), (41, 12006), (45, 12036), (48, 12045), (53, 12069), (54, 12081), (56, 12141), (62, 12180),

Gene: RonRayGun\_12 Start: 9006, Stop: 9371, Start Num: 12

Candidate Starts for RonRayGun\_12:

(8, 8949), (Start: 12 @9006 has 7 MA's), (22, 9072), (23, 9084), (35, 9141), (37, 9168), (43, 9213), (44, 9219), (60, 9345),

Gene: Sephiroth\_20 Start: 11623, Stop: 11988, Start Num: 14

Candidate Starts for Sephiroth\_20:

(Start: 14 @11623 has 6 MA's), (19, 11659), (23, 11686), (24, 11698), (32, 11728), (33, 11734), (34, 11740), (39, 11788), (40, 11791), (41, 11794), (53, 11860), (54, 11872), (62, 11959), (64, 11971),

Gene: Syleon\_20 Start: 11545, Stop: 11910, Start Num: 14

Candidate Starts for Syleon\_20:

(Start: 14 @11545 has 6 MA's), (19, 11581), (23, 11608), (24, 11620), (32, 11650), (33, 11656), (34, 11662), (39, 11710), (40, 11713), (41, 11716), (53, 11782), (54, 11794), (62, 11881), (64, 11893),

Gene: Trax\_19 Start: 11277, Stop: 11648, Start Num: 14

Candidate Starts for Trax\_19:

(11, 11262), (Start: 14 @11277 has 6 MA's), (16, 11283), (20, 11322), (21, 11325), (23, 11340), (24, 11352), (33, 11388), (50, 11493), (53, 11511), (54, 11523), (55, 11556), (64, 11634),

Gene: Whitty\_12 Start: 9006, Stop: 9371, Start Num: 12

Candidate Starts for Whitty\_12:

(8, 8949), (Start: 12 @9006 has 7 MA's), (22, 9072), (23, 9084), (35, 9141), (37, 9168), (43, 9213), (44, 9219), (60, 9345),

Gene: ZenTime222\_12 Start: 9006, Stop: 9371, Start Num: 12

Candidate Starts for ZenTime222\_12:

(8, 8949), (Start: 12 @9006 has 7 MA's), (22, 9072), (23, 9084), (35, 9141), (37, 9168), (43, 9213), (44, 9219), (60, 9345),