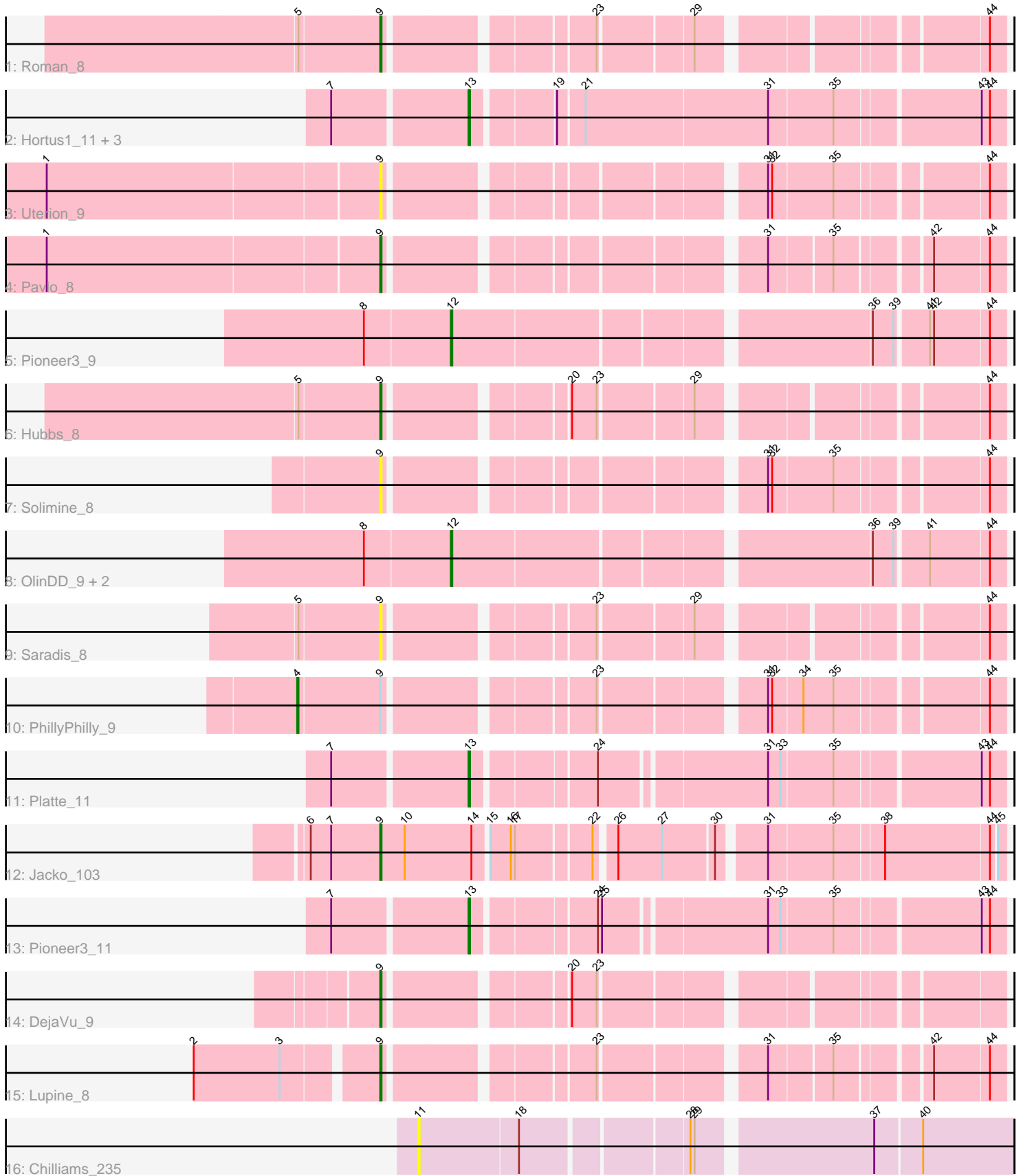


Pham 296932



Note: Tracks are now grouped by subcluster and scaled. Switching in subcluster is indicated by changes in track color. Track scale is now set by default to display the region 30 bp upstream of start 1 to 30 bp downstream of the last possible start. If this default region is judged to be packed too tightly with annotated starts, the track will be further scaled to only show that region of the ORF with annotated starts. This action will be indicated by adding "Zoomed" to the title. For starts, yellow indicates the location of called starts comprised solely of Glimmer/GeneMark auto-annotations, green indicates the location of called starts with at least 1 manual gene annotation.

## Pham 296932 Report

This analysis was run 04/25/26 on database version 644.

WARNING: Pham size does not match number of genes in report. Either unphamerated genes have been added (by you) or starterator has removed genes due to invalid start codon.

Pham number 296932 has 21 members, 4 are drafts.

Phages represented in each track:

- Track 1 : Roman\_8
- Track 2 : Hortus1\_11, OlinDD\_11, Tandem\_11, Alleb\_12
- Track 3 : Uterion\_9
- Track 4 : Pavlo\_8
- Track 5 : Pioneer3\_9
- Track 6 : Hubbs\_8
- Track 7 : Solimine\_8
- Track 8 : OlinDD\_9, Hortus1\_9, Alleb\_10
- Track 9 : Saradis\_8
- Track 10 : PhillyPhilly\_9
- Track 11 : Platte\_11
- Track 12 : Jacko\_103
- Track 13 : Pioneer3\_11
- Track 14 : DejaVu\_9
- Track 15 : Lupine\_8
- Track 16 : Chilliams\_235

### ***Summary of Final Annotations (See graph section above for start numbers):***

The start number called the most often in the published annotations is 9, it was called in 6 of the 17 non-draft genes in the pham.

Genes that call this "Most Annotated" start:

- DejaVu\_9, Hubbs\_8, Jacko\_103, Lupine\_8, Pavlo\_8, Roman\_8, Saradis\_8, Solimine\_8, Uterion\_9,

Genes that have the "Most Annotated" start but do not call it:

- PhillyPhilly\_9,

Genes that do not have the "Most Annotated" start:

- Alleb\_10, Alleb\_12, Chilliams\_235, Hortus1\_11, Hortus1\_9, OlinDD\_11, OlinDD\_9, Pioneer3\_11, Pioneer3\_9, Platte\_11, Tandem\_11,

### Summary by start number:

#### Start 4:

- Found in 1 of 21 ( 4.8% ) of genes in pham
- Manual Annotations of this start: 1 of 17
- Called 100.0% of time when present
- Phage (with cluster) where this start called: PhillyPhilly\_9 (ED1),

#### Start 9:

- Found in 10 of 21 ( 47.6% ) of genes in pham
- Manual Annotations of this start: 6 of 17
- Called 90.0% of time when present
- Phage (with cluster) where this start called: DejaVu\_9 (ED1), Hubbs\_8 (ED1), Jacko\_103 (ED1), Lupine\_8 (ED1), Pavlo\_8 (ED1), Roman\_8 (ED1), Saradis\_8 (ED1), Solimine\_8 (ED1), Uterion\_9 (ED1),

#### Start 11:

- Found in 1 of 21 ( 4.8% ) of genes in pham
- No Manual Annotations of this start.
- Called 100.0% of time when present
- Phage (with cluster) where this start called: Chilliams\_235 (FC),

#### Start 12:

- Found in 4 of 21 ( 19.0% ) of genes in pham
- Manual Annotations of this start: 4 of 17
- Called 100.0% of time when present
- Phage (with cluster) where this start called: Alleb\_10 (ED1), Hortus1\_9 (ED1), OlinDD\_9 (ED1), Pioneer3\_9 (ED1),

#### Start 13:

- Found in 6 of 21 ( 28.6% ) of genes in pham
- Manual Annotations of this start: 6 of 17
- Called 100.0% of time when present
- Phage (with cluster) where this start called: Alleb\_12 (ED1), Hortus1\_11 (ED1), OlinDD\_11 (ED1), Pioneer3\_11 (ED1), Platte\_11 (ED1), Tandem\_11 (ED1),

### Summary by clusters:

There are 2 clusters represented in this pham: FC, ED1,

#### Info for manual annotations of cluster ED1:

- Start number 4 was manually annotated 1 time for cluster ED1.
- Start number 9 was manually annotated 6 times for cluster ED1.
- Start number 12 was manually annotated 4 times for cluster ED1.
- Start number 13 was manually annotated 6 times for cluster ED1.

### Gene Information:

Gene: Alleb\_10 Start: 3636, Stop: 4010, Start Num: 12  
Candidate Starts for Alleb\_10:  
(8, 3576), (Start: 12 @3636 has 4 MA's), (36, 3921), (39, 3936), (41, 3957), (44, 3999),

Gene: Alleb\_12 Start: 4351, Stop: 4713, Start Num: 13  
Candidate Starts for Alleb\_12:  
(7, 4258), (Start: 13 @4351 has 6 MA's), (19, 4405), (21, 4423), (31, 4555), (35, 4600), (43, 4696), (44, 4702),

Gene: Chilliams\_235 Start: 150972, Stop: 151376, Start Num: 11  
Candidate Starts for Chilliams\_235:  
(11, 150972), (18, 151044), (28, 151155), (29, 151158), (37, 151278), (40, 151311),

Gene: DejaVu\_9 Start: 3447, Stop: 3833, Start Num: 9  
Candidate Starts for DejaVu\_9:  
(Start: 9 @3447 has 6 MA's), (20, 3561), (23, 3579),

Gene: Hortus1\_11 Start: 4305, Stop: 4667, Start Num: 13  
Candidate Starts for Hortus1\_11:  
(7, 4212), (Start: 13 @4305 has 6 MA's), (19, 4359), (21, 4377), (31, 4509), (35, 4554), (43, 4650), (44, 4656),

Gene: Hortus1\_9 Start: 3590, Stop: 3964, Start Num: 12  
Candidate Starts for Hortus1\_9:  
(8, 3530), (Start: 12 @3590 has 4 MA's), (36, 3875), (39, 3890), (41, 3911), (44, 3953),

Gene: Hubbs\_8 Start: 3631, Stop: 4017, Start Num: 9  
Candidate Starts for Hubbs\_8:  
(5, 3574), (Start: 9 @3631 has 6 MA's), (20, 3745), (23, 3763), (29, 3826), (44, 4006),

Gene: Jacko\_103 Start: 55408, Stop: 54995, Start Num: 9  
Candidate Starts for Jacko\_103:  
(6, 55459), (7, 55444), (Start: 9 @55408 has 6 MA's), (10, 55390), (14, 55342), (15, 55333), (16, 55318), (17, 55315), (22, 55264), (26, 55252), (27, 55222), (30, 55186), (31, 55156), (35, 55111), (38, 55078), (44, 55003), (45, 55000),

Gene: Lupine\_8 Start: 3428, Stop: 3817, Start Num: 9  
Candidate Starts for Lupine\_8:  
(2, 3308), (3, 3371), (Start: 9 @3428 has 6 MA's), (23, 3560), (31, 3665), (35, 3707), (42, 3767), (44, 3806),

Gene: OlinDD\_11 Start: 4304, Stop: 4666, Start Num: 13  
Candidate Starts for OlinDD\_11:  
(7, 4211), (Start: 13 @4304 has 6 MA's), (19, 4358), (21, 4376), (31, 4508), (35, 4553), (43, 4649), (44, 4655),

Gene: OlinDD\_9 Start: 3589, Stop: 3963, Start Num: 12  
Candidate Starts for OlinDD\_9:  
(8, 3529), (Start: 12 @3589 has 4 MA's), (36, 3874), (39, 3889), (41, 3910), (44, 3952),

Gene: Pavlo\_8 Start: 3702, Stop: 4091, Start Num: 9  
Candidate Starts for Pavlo\_8:  
(1, 3465), (Start: 9 @3702 has 6 MA's), (31, 3939), (35, 3981), (42, 4041), (44, 4080),

Gene: PhillyPhilly\_9 Start: 3491, Stop: 3940, Start Num: 4

Candidate Starts for PhillyPhilly\_9:

(Start: 4 @3491 has 1 MA's), (Start: 9 @3548 has 6 MA's), (23, 3680), (31, 3785), (32, 3788), (34, 3809), (35, 3830), (44, 3929),

Gene: Pioneer3\_9 Start: 3622, Stop: 3996, Start Num: 12

Candidate Starts for Pioneer3\_9:

(8, 3562), (Start: 12 @3622 has 4 MA's), (36, 3907), (39, 3922), (41, 3943), (42, 3946), (44, 3985),

Gene: Pioneer3\_11 Start: 4337, Stop: 4690, Start Num: 13

Candidate Starts for Pioneer3\_11:

(7, 4244), (Start: 13 @4337 has 6 MA's), (24, 4418), (25, 4421), (31, 4532), (33, 4541), (35, 4577), (43, 4673), (44, 4679),

Gene: Platte\_11 Start: 4138, Stop: 4491, Start Num: 13

Candidate Starts for Platte\_11:

(7, 4045), (Start: 13 @4138 has 6 MA's), (24, 4219), (31, 4333), (33, 4342), (35, 4378), (43, 4474), (44, 4480),

Gene: Roman\_8 Start: 3340, Stop: 3726, Start Num: 9

Candidate Starts for Roman\_8:

(5, 3283), (Start: 9 @3340 has 6 MA's), (23, 3472), (29, 3535), (44, 3715),

Gene: Saradis\_8 Start: 3395, Stop: 3781, Start Num: 9

Candidate Starts for Saradis\_8:

(5, 3338), (Start: 9 @3395 has 6 MA's), (23, 3527), (29, 3590), (44, 3770),

Gene: Solimine\_8 Start: 3460, Stop: 3852, Start Num: 9

Candidate Starts for Solimine\_8:

(Start: 9 @3460 has 6 MA's), (31, 3697), (32, 3700), (35, 3742), (44, 3841),

Gene: Tandem\_11 Start: 4242, Stop: 4604, Start Num: 13

Candidate Starts for Tandem\_11:

(7, 4149), (Start: 13 @4242 has 6 MA's), (19, 4296), (21, 4314), (31, 4446), (35, 4491), (43, 4587), (44, 4593),

Gene: Uterion\_9 Start: 3842, Stop: 4234, Start Num: 9

Candidate Starts for Uterion\_9:

(1, 3605), (Start: 9 @3842 has 6 MA's), (31, 4079), (32, 4082), (35, 4124), (44, 4223),