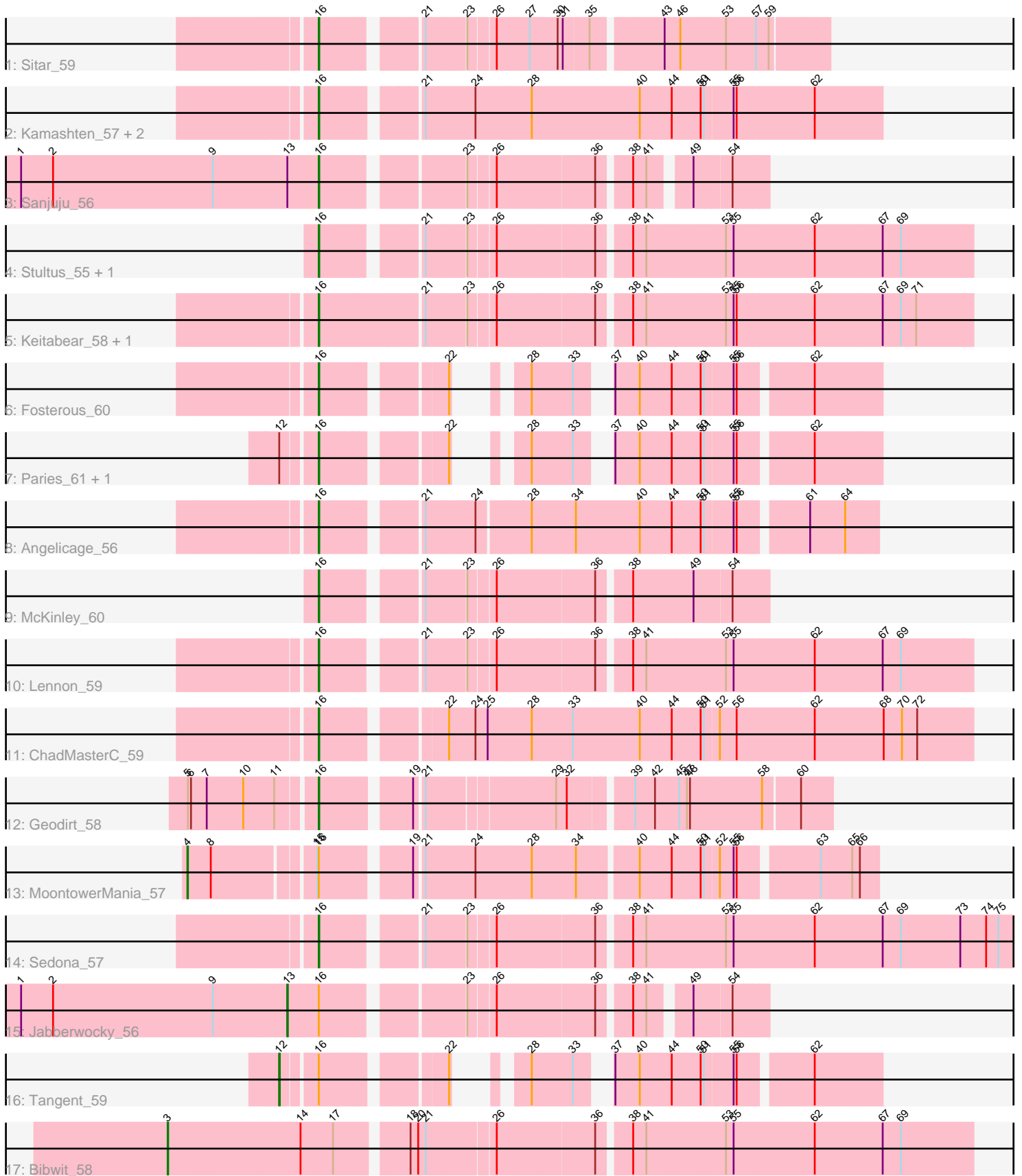


Pham 296935



Note: Tracks are now grouped by subcluster and scaled. Switching in subcluster is indicated by changes in track color. Track scale is now set by default to display the region 30 bp upstream of start 1 to 30 bp downstream of the last possible start. If this default region is judged to be packed too tightly with annotated starts, the track will be further scaled to only show that region of the ORF with annotated starts. This action will be indicated by adding "Zoomed" to the title. For starts, yellow indicates the location of called starts comprised solely of Glimmer/GeneMark auto-annotations, green indicates the location of called starts with at least 1 manual gene annotation.

Pham 296935 Report

This analysis was run 04/25/26 on database version 644.

Pham number 296935 has 22 members, 1 are drafts.

Phages represented in each track:

- Track 1 : Sitar_59
- Track 2 : Kamashten_57, Thing3_57, BobBob_57
- Track 3 : Sanjuju_56
- Track 4 : Stultus_55, Brawn1_54
- Track 5 : Keitabear_58, Ailee_55
- Track 6 : Fosterous_60
- Track 7 : Paries_61, Rofo_58
- Track 8 : Angelicage_56
- Track 9 : McKinley_60
- Track 10 : Lennon_59
- Track 11 : ChadMasterC_59
- Track 12 : Geodirt_58
- Track 13 : MoontowerMania_57
- Track 14 : Sedona_57
- Track 15 : Jabberwocky_56
- Track 16 : Tangent_59
- Track 17 : Bibwit_58

Summary of Final Annotations (See graph section above for start numbers):

The start number called the most often in the published annotations is 16, it was called in 17 of the 21 non-draft genes in the pham.

Genes that call this "Most Annotated" start:

- Ailee_55, Angelicage_56, BobBob_57, Brawn1_54, ChadMasterC_59, Fosterous_60, Geodirt_58, Kamashten_57, Keitabear_58, Lennon_59, McKinley_60, Paries_61, Rofo_58, Sanjuju_56, Sedona_57, Sitar_59, Stultus_55, Thing3_57,

Genes that have the "Most Annotated" start but do not call it:

- Jabberwocky_56, MoontowerMania_57, Tangent_59,

Genes that do not have the "Most Annotated" start:

- Bibwit_58,

Summary by start number:

Start 3:

- Found in 1 of 22 (4.5%) of genes in pham
- Manual Annotations of this start: 1 of 21
- Called 100.0% of time when present
- Phage (with cluster) where this start called: Bibwit_58 (DE1),

Start 4:

- Found in 1 of 22 (4.5%) of genes in pham
- Manual Annotations of this start: 1 of 21
- Called 100.0% of time when present
- Phage (with cluster) where this start called: MoontowerMania_57 (DE1),

Start 12:

- Found in 3 of 22 (13.6%) of genes in pham
- Manual Annotations of this start: 1 of 21
- Called 33.3% of time when present
- Phage (with cluster) where this start called: Tangent_59 (DE1),

Start 13:

- Found in 2 of 22 (9.1%) of genes in pham
- Manual Annotations of this start: 1 of 21
- Called 50.0% of time when present
- Phage (with cluster) where this start called: Jabberwocky_56 (DE1),

Start 16:

- Found in 21 of 22 (95.5%) of genes in pham
- Manual Annotations of this start: 17 of 21
- Called 85.7% of time when present
- Phage (with cluster) where this start called: Ailee_55 (DE1), Angelicage_56 (DE1), BobBob_57 (DE1), Brawn1_54 (DE1), ChadMasterC_59 (DE1), Fosterous_60 (DE1), Geodirt_58 (DE1), Kamashten_57 (DE1), Keitabear_58 (DE1), Lennon_59 (DE1), McKinley_60 (DE1), Paries_61 (DE1), Rofo_58 (DE1), Sanjuju_56 (DE1), Sedona_57 (DE1), Sitar_59 (DE1), Stultus_55 (DE1), Thing3_57 (DE1),

Summary by clusters:

There is one cluster represented in this pham: DE1

Info for manual annotations of cluster DE1:

- Start number 3 was manually annotated 1 time for cluster DE1.
- Start number 4 was manually annotated 1 time for cluster DE1.
- Start number 12 was manually annotated 1 time for cluster DE1.
- Start number 13 was manually annotated 1 time for cluster DE1.
- Start number 16 was manually annotated 17 times for cluster DE1.

Gene Information:

Gene: Ailee_55 Start: 46373, Stop: 47545, Start Num: 16

Candidate Starts for Ailee_55:

(Start: 16 @46373 has 17 MA's), (21, 46535), (23, 46610), (26, 46658), (36, 46835), (38, 46892), (41, 46916), (53, 47066), (55, 47081), (56, 47087), (62, 47237), (67, 47369), (69, 47405), (71, 47435),

Gene: Angelicage_56 Start: 47180, Stop: 48190, Start Num: 16

Candidate Starts for Angelicage_56:

(Start: 16 @47180 has 17 MA's), (21, 47351), (24, 47447), (28, 47546), (34, 47633), (40, 47759), (44, 47819), (50, 47873), (51, 47879), (55, 47933), (56, 47939), (61, 48059), (64, 48128),

Gene: Bibwit_58 Start: 46107, Stop: 47591, Start Num: 3

Candidate Starts for Bibwit_58:

(Start: 3 @46107 has 1 MA's), (14, 46362), (17, 46425), (18, 46545), (20, 46560), (21, 46575), (26, 46701), (36, 46881), (38, 46938), (41, 46962), (53, 47112), (55, 47127), (62, 47283), (67, 47415), (69, 47451),

Gene: BobBob_57 Start: 46363, Stop: 47412, Start Num: 16

Candidate Starts for BobBob_57:

(Start: 16 @46363 has 17 MA's), (21, 46534), (24, 46630), (28, 46738), (40, 46951), (44, 47011), (50, 47065), (51, 47071), (55, 47125), (56, 47131), (62, 47281),

Gene: Brawn1_54 Start: 46184, Stop: 47365, Start Num: 16

Candidate Starts for Brawn1_54:

(Start: 16 @46184 has 17 MA's), (21, 46355), (23, 46430), (26, 46478), (36, 46655), (38, 46712), (41, 46736), (53, 46886), (55, 46901), (62, 47057), (67, 47189), (69, 47225),

Gene: ChadMasterC_59 Start: 48535, Stop: 49746, Start Num: 16

Candidate Starts for ChadMasterC_59:

(Start: 16 @48535 has 17 MA's), (22, 48739), (24, 48790), (25, 48814), (28, 48895), (33, 48976), (40, 49108), (44, 49168), (50, 49222), (51, 49228), (52, 49255), (56, 49288), (62, 49438), (68, 49570), (70, 49606), (72, 49636),

Gene: Fosterous_60 Start: 47490, Stop: 48347, Start Num: 16

Candidate Starts for Fosterous_60:

(Start: 16 @47490 has 17 MA's), (22, 47694), (28, 47745), (33, 47826), (37, 47862), (40, 47907), (44, 47967), (50, 48021), (51, 48027), (55, 48081), (56, 48087), (62, 48216),

Gene: Geodirt_58 Start: 47882, Stop: 48784, Start Num: 16

Candidate Starts for Geodirt_58:

(5, 47648), (6, 47654), (7, 47684), (10, 47756), (11, 47813), (Start: 16 @47882 has 17 MA's), (19, 48035), (21, 48050), (29, 48284), (32, 48302), (39, 48407), (42, 48443), (45, 48491), (47, 48506), (48, 48512), (58, 48653), (60, 48722),

Gene: Jabberwocky_56 Start: 47831, Stop: 48631, Start Num: 13

Candidate Starts for Jabberwocky_56:

(1, 47309), (2, 47372), (9, 47687), (Start: 13 @47831 has 1 MA's), (Start: 16 @47891 has 17 MA's), (23, 48134), (26, 48182), (36, 48359), (38, 48416), (41, 48440), (49, 48500), (54, 48569),

Gene: Kamashten_57 Start: 46476, Stop: 47525, Start Num: 16

Candidate Starts for Kamashten_57:

(Start: 16 @46476 has 17 MA's), (21, 46647), (24, 46743), (28, 46851), (40, 47064), (44, 47124), (50, 47178), (51, 47184), (55, 47238), (56, 47244), (62, 47394),

Gene: Keitabear_58 Start: 47995, Stop: 49200, Start Num: 16

Candidate Starts for Keitabear_58:

(Start: 16 @47995 has 17 MA's), (21, 48187), (23, 48262), (26, 48310), (36, 48490), (38, 48547), (41, 48571), (53, 48721), (55, 48736), (56, 48742), (62, 48892), (67, 49024), (69, 49060), (71, 49090),

Gene: Lennon_59 Start: 48333, Stop: 49508, Start Num: 16

Candidate Starts for Lennon_59:

(Start: 16 @48333 has 17 MA's), (21, 48495), (23, 48570), (26, 48618), (36, 48798), (38, 48855), (41, 48879), (53, 49029), (55, 49044), (62, 49200), (67, 49332), (69, 49368),

Gene: McKinley_60 Start: 47567, Stop: 48328, Start Num: 16

Candidate Starts for McKinley_60:

(Start: 16 @47567 has 17 MA's), (21, 47729), (23, 47804), (26, 47852), (36, 48032), (38, 48089), (49, 48197), (54, 48266),

Gene: MoontowerMania_57 Start: 47403, Stop: 48626, Start Num: 4

Candidate Starts for MoontowerMania_57:

(Start: 4 @47403 has 1 MA's), (8, 47445), (15, 47622), (Start: 16 @47625 has 17 MA's), (19, 47781), (21, 47796), (24, 47892), (28, 48000), (34, 48087), (40, 48198), (44, 48258), (50, 48312), (51, 48318), (52, 48345), (55, 48372), (56, 48378), (63, 48516), (65, 48576), (66, 48591),

Gene: Paries_61 Start: 47806, Stop: 48663, Start Num: 16

Candidate Starts for Paries_61:

(Start: 12 @47746 has 1 MA's), (Start: 16 @47806 has 17 MA's), (22, 48010), (28, 48061), (33, 48142), (37, 48178), (40, 48223), (44, 48283), (50, 48337), (51, 48343), (55, 48397), (56, 48403), (62, 48532),

Gene: Rofo_58 Start: 47154, Stop: 48011, Start Num: 16

Candidate Starts for Rofo_58:

(Start: 12 @47094 has 1 MA's), (Start: 16 @47154 has 17 MA's), (22, 47358), (28, 47409), (33, 47490), (37, 47526), (40, 47571), (44, 47631), (50, 47685), (51, 47691), (55, 47745), (56, 47751), (62, 47880),

Gene: Sanjuju_56 Start: 47648, Stop: 48388, Start Num: 16

Candidate Starts for Sanjuju_56:

(1, 47066), (2, 47129), (9, 47444), (Start: 13 @47588 has 1 MA's), (Start: 16 @47648 has 17 MA's), (23, 47891), (26, 47939), (36, 48116), (38, 48173), (41, 48197), (49, 48257), (54, 48326),

Gene: Sedona_57 Start: 47675, Stop: 49015, Start Num: 16

Candidate Starts for Sedona_57:

(Start: 16 @47675 has 17 MA's), (21, 47837), (23, 47912), (26, 47960), (36, 48140), (38, 48197), (41, 48221), (53, 48371), (55, 48386), (62, 48542), (67, 48674), (69, 48710), (73, 48827), (74, 48878), (75, 48902),

Gene: Sitar_59 Start: 48333, Stop: 49211, Start Num: 16

Candidate Starts for Sitar_59:

(Start: 16 @48333 has 17 MA's), (21, 48495), (23, 48570), (26, 48618), (27, 48678), (30, 48732), (31, 48738), (35, 48783), (43, 48906), (46, 48936), (53, 49023), (57, 49074), (59, 49098),

Gene: Stultus_55 Start: 46310, Stop: 47479, Start Num: 16

Candidate Starts for Stultus_55:

(Start: 16 @46310 has 17 MA's), (21, 46472), (23, 46547), (26, 46592), (36, 46769), (38, 46826), (41, 46850), (53, 47000), (55, 47015), (62, 47171), (67, 47303), (69, 47339),

Gene: Tangent_59 Start: 46717, Stop: 47634, Start Num: 12

Candidate Starts for Tangent_59:

(Start: 12 @46717 has 1 MA's), (Start: 16 @46777 has 17 MA's), (22, 46981), (28, 47032), (33, 47113), (37, 47149), (40, 47194), (44, 47254), (50, 47308), (51, 47314), (55, 47368), (56, 47374), (62, 47503),

Gene: Thing3_57 Start: 46476, Stop: 47525, Start Num: 16

Candidate Starts for Thing3_57:

(Start: 16 @46476 has 17 MA's), (21, 46647), (24, 46743), (28, 46851), (40, 47064), (44, 47124), (50, 47178), (51, 47184), (55, 47238), (56, 47244), (62, 47394),