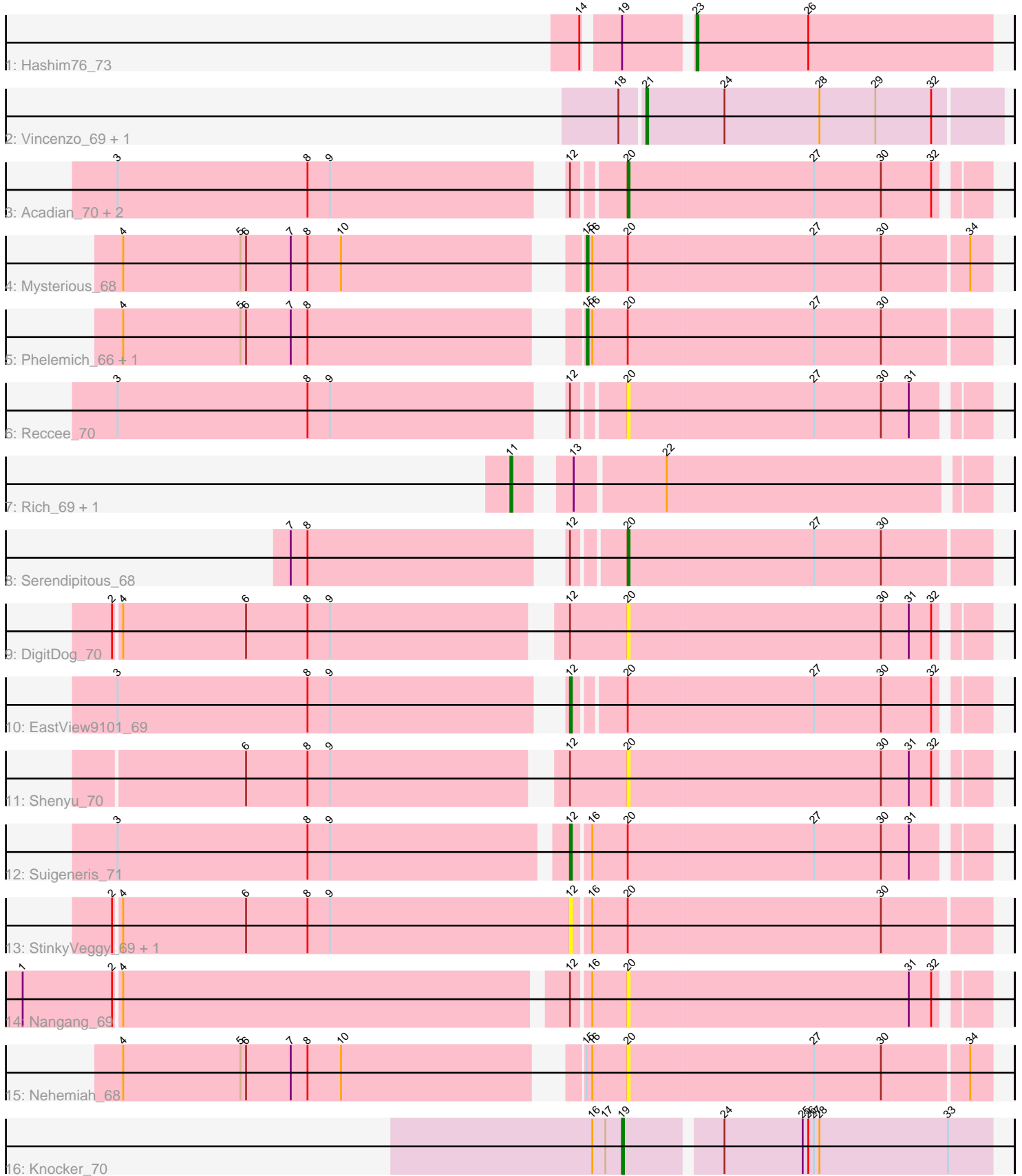


Pham 296938



Note: Tracks are now grouped by subcluster and scaled. Switching in subcluster is indicated by changes in track color. Track scale is now set by default to display the region 30 bp upstream of start 1 to 30 bp downstream of the last possible start. If this default region is judged to be packed too tightly with annotated starts, the track will be further scaled to only show that region of the ORF with annotated starts. This action will be indicated by adding "Zoomed" to the title. For starts, yellow indicates the location of called starts comprised solely of Glimmer/GeneMark auto-annotations, green indicates the location of called starts with at least 1 manual gene annotation.

Pham 296938 Report

This analysis was run 04/25/26 on database version 644.

Pham number 296938 has 22 members, 9 are drafts.

Phages represented in each track:

- Track 1 : Hashim76_73
- Track 2 : Vincenzo_69, AlanGrant_70
- Track 3 : Acadian_70, Rita130_69, SirJeffery_69
- Track 4 : Mysterious_68
- Track 5 : Phelemich_66, Reprobate_68
- Track 6 : Reccee_70
- Track 7 : Rich_69, Bae_70
- Track 8 : Serendipitous_68
- Track 9 : DigitDog_70
- Track 10 : EastView9101_69
- Track 11 : Shenyu_70
- Track 12 : Suigeneris_71
- Track 13 : StinkyVeggy_69, KarasumaRum_69
- Track 14 : Nangang_69
- Track 15 : Nehemiah_68
- Track 16 : Knocker_70

Summary of Final Annotations (See graph section above for start numbers):

The start number called the most often in the published annotations is 15, it was called in 3 of the 13 non-draft genes in the pham.

Genes that call this "Most Annotated" start:

- Mysterious_68, Phelemich_66, Reprobate_68,

Genes that have the "Most Annotated" start but do not call it:

- Nehemiah_68,

Genes that do not have the "Most Annotated" start:

- Acadian_70, AlanGrant_70, Bae_70, DigitDog_70, EastView9101_69, Hashim76_73, KarasumaRum_69, Knocker_70, Nangang_69, Reccee_70, Rich_69, Rita130_69, Serendipitous_68, Shenyu_70, SirJeffery_69, StinkyVeggy_69, Suigeneris_71, Vincenzo_69,

Summary by start number:

Start 11:

- Found in 2 of 22 (9.1%) of genes in pham
- Manual Annotations of this start: 2 of 13
- Called 100.0% of time when present
- Phage (with cluster) where this start called: Bae_70 (B5), Rich_69 (B5),

Start 12:

- Found in 12 of 22 (54.5%) of genes in pham
- Manual Annotations of this start: 2 of 13
- Called 33.3% of time when present
- Phage (with cluster) where this start called: EastView9101_69 (B5), KarasumaRum_69 (B5), StinkyVeggy_69 (B5), Suigeneris_71 (B5),

Start 15:

- Found in 4 of 22 (18.2%) of genes in pham
- Manual Annotations of this start: 3 of 13
- Called 75.0% of time when present
- Phage (with cluster) where this start called: Mysterious_68 (B5), Phelemich_66 (B5), Reprobate_68 (B5),

Start 19:

- Found in 2 of 22 (9.1%) of genes in pham
- Manual Annotations of this start: 1 of 13
- Called 50.0% of time when present
- Phage (with cluster) where this start called: Knocker_70 (B9),

Start 20:

- Found in 16 of 22 (72.7%) of genes in pham
- Manual Annotations of this start: 2 of 13
- Called 56.2% of time when present
- Phage (with cluster) where this start called: Acadian_70 (B5), DigitDog_70 (B5), Nangang_69 (B5), Nehemiah_68 (B5), Reccee_70 (B5), Rita130_69 (B5), Serendipitous_68 (B5), Shenyu_70 (B5), SirJeffery_69 (B5),

Start 21:

- Found in 2 of 22 (9.1%) of genes in pham
- Manual Annotations of this start: 2 of 13
- Called 100.0% of time when present
- Phage (with cluster) where this start called: AlanGrant_70 (B4), Vincenzo_69 (B4),

Start 23:

- Found in 1 of 22 (4.5%) of genes in pham
- Manual Annotations of this start: 1 of 13
- Called 100.0% of time when present
- Phage (with cluster) where this start called: Hashim76_73 (B13),

Summary by clusters:

There are 4 clusters represented in this pham: B4, B5, B9, B13,

Info for manual annotations of cluster B13:

- Start number 23 was manually annotated 1 time for cluster B13.

Info for manual annotations of cluster B4:

- Start number 21 was manually annotated 2 times for cluster B4.

Info for manual annotations of cluster B5:

- Start number 11 was manually annotated 2 times for cluster B5.
- Start number 12 was manually annotated 2 times for cluster B5.
- Start number 15 was manually annotated 3 times for cluster B5.
- Start number 20 was manually annotated 2 times for cluster B5.

Info for manual annotations of cluster B9:

- Start number 19 was manually annotated 1 time for cluster B9.

Gene Information:

Gene: Acadian_70 Start: 58936, Stop: 59121, Start Num: 20

Candidate Starts for Acadian_70:

(3, 58687), (8, 58789), (9, 58801), (Start: 12 @58912 has 2 MA's), (Start: 20 @58936 has 2 MA's), (27, 59035), (30, 59071), (32, 59098),

Gene: AlanGrant_70 Start: 60610, Stop: 60798, Start Num: 21

Candidate Starts for AlanGrant_70:

(18, 60598), (Start: 21 @60610 has 2 MA's), (24, 60652), (28, 60703), (29, 60733), (32, 60763),

Gene: Bae_70 Start: 59961, Stop: 60203, Start Num: 11

Candidate Starts for Bae_70:

(Start: 11 @59961 has 2 MA's), (13, 59982), (22, 60027),

Gene: DigitDog_70 Start: 59079, Stop: 59264, Start Num: 20

Candidate Starts for DigitDog_70:

(2, 58821), (4, 58824), (6, 58890), (8, 58923), (9, 58935), (Start: 12 @59049 has 2 MA's), (Start: 20 @59079 has 2 MA's), (30, 59214), (31, 59229), (32, 59241),

Gene: EastView9101_69 Start: 58656, Stop: 58865, Start Num: 12

Candidate Starts for EastView9101_69:

(3, 58431), (8, 58533), (9, 58545), (Start: 12 @58656 has 2 MA's), (Start: 20 @58680 has 2 MA's), (27, 58779), (30, 58815), (32, 58842),

Gene: Hashim76_73 Start: 59194, Stop: 59352, Start Num: 23

Candidate Starts for Hashim76_73:

(14, 59146), (Start: 19 @59161 has 1 MA's), (Start: 23 @59194 has 1 MA's), (26, 59254),

Gene: KarasumaRum_69 Start: 58864, Stop: 59082, Start Num: 12

Candidate Starts for KarasumaRum_69:

(2, 58621), (4, 58624), (6, 58690), (8, 58723), (9, 58735), (Start: 12 @58864 has 2 MA's), (16, 58873), (Start: 20 @58891 has 2 MA's), (30, 59026),

Gene: Knocker_70 Start: 60207, Stop: 60398, Start Num: 19

Candidate Starts for Knocker_70:

(16, 60192), (17, 60198), (Start: 19 @60207 has 1 MA's), (24, 60255), (25, 60297), (26, 60300), (27, 60303), (28, 60306), (33, 60375),

Gene: Mysterious_68 Start: 58978, Stop: 59190, Start Num: 15

Candidate Starts for Mysterious_68:

(4, 58750), (5, 58813), (6, 58816), (7, 58840), (8, 58849), (10, 58867), (Start: 15 @58978 has 3 MA's), (16, 58981), (Start: 20 @58999 has 2 MA's), (27, 59098), (30, 59134), (34, 59179),

Gene: Nangang_69 Start: 59078, Stop: 59263, Start Num: 20

Candidate Starts for Nangang_69:

(1, 58769), (2, 58817), (4, 58820), (Start: 12 @59051 has 2 MA's), (16, 59060), (Start: 20 @59078 has 2 MA's), (31, 59228), (32, 59240),

Gene: Nehemiah_68 Start: 58837, Stop: 59028, Start Num: 20

Candidate Starts for Nehemiah_68:

(4, 58588), (5, 58651), (6, 58654), (7, 58678), (8, 58687), (10, 58705), (Start: 15 @58816 has 3 MA's), (16, 58819), (Start: 20 @58837 has 2 MA's), (27, 58936), (30, 58972), (34, 59017),

Gene: Phelemich_66 Start: 58810, Stop: 59022, Start Num: 15

Candidate Starts for Phelemich_66:

(4, 58582), (5, 58645), (6, 58648), (7, 58672), (8, 58681), (Start: 15 @58810 has 3 MA's), (16, 58813), (Start: 20 @58831 has 2 MA's), (27, 58930), (30, 58966),

Gene: Reccee_70 Start: 59061, Stop: 59246, Start Num: 20

Candidate Starts for Reccee_70:

(3, 58812), (8, 58914), (9, 58926), (Start: 12 @59037 has 2 MA's), (Start: 20 @59061 has 2 MA's), (27, 59160), (30, 59196), (31, 59211),

Gene: Reprobate_68 Start: 58815, Stop: 59027, Start Num: 15

Candidate Starts for Reprobate_68:

(4, 58587), (5, 58650), (6, 58653), (7, 58677), (8, 58686), (Start: 15 @58815 has 3 MA's), (16, 58818), (Start: 20 @58836 has 2 MA's), (27, 58935), (30, 58971),

Gene: Rich_69 Start: 60021, Stop: 60251, Start Num: 11

Candidate Starts for Rich_69:

(Start: 11 @60021 has 2 MA's), (13, 60042), (22, 60087),

Gene: Rita130_69 Start: 58874, Stop: 59059, Start Num: 20

Candidate Starts for Rita130_69:

(3, 58625), (8, 58727), (9, 58739), (Start: 12 @58850 has 2 MA's), (Start: 20 @58874 has 2 MA's), (27, 58973), (30, 59009), (32, 59036),

Gene: Serendipitous_68 Start: 58411, Stop: 58602, Start Num: 20

Candidate Starts for Serendipitous_68:

(7, 58255), (8, 58264), (Start: 12 @58387 has 2 MA's), (Start: 20 @58411 has 2 MA's), (27, 58510), (30, 58546),

Gene: Shenyu_70 Start: 59444, Stop: 59629, Start Num: 20

Candidate Starts for Shenyu_70:

(6, 59255), (8, 59288), (9, 59300), (Start: 12 @59414 has 2 MA's), (Start: 20 @59444 has 2 MA's), (30, 59579), (31, 59594), (32, 59606),

Gene: SirJeffery_69 Start: 59013, Stop: 59198, Start Num: 20

Candidate Starts for SirJeffery_69:

(3, 58764), (8, 58866), (9, 58878), (Start: 12 @58989 has 2 MA's), (Start: 20 @59013 has 2 MA's), (27, 59112), (30, 59148), (32, 59175),

Gene: StinkyVeggy_69 Start: 58864, Stop: 59082, Start Num: 12

Candidate Starts for StinkyVeggy_69:

(2, 58621), (4, 58624), (6, 58690), (8, 58723), (9, 58735), (Start: 12 @58864 has 2 MA's), (16, 58873), (Start: 20 @58891 has 2 MA's), (30, 59026),

Gene: Suigeneris_71 Start: 59137, Stop: 59349, Start Num: 12

Candidate Starts for Suigeneris_71:

(3, 58903), (8, 59005), (9, 59017), (Start: 12 @59137 has 2 MA's), (16, 59146), (Start: 20 @59164 has 2 MA's), (27, 59263), (30, 59299), (31, 59314),

Gene: Vincenzo_69 Start: 60640, Stop: 60828, Start Num: 21

Candidate Starts for Vincenzo_69:

(18, 60628), (Start: 21 @60640 has 2 MA's), (24, 60682), (28, 60733), (29, 60763), (32, 60793),