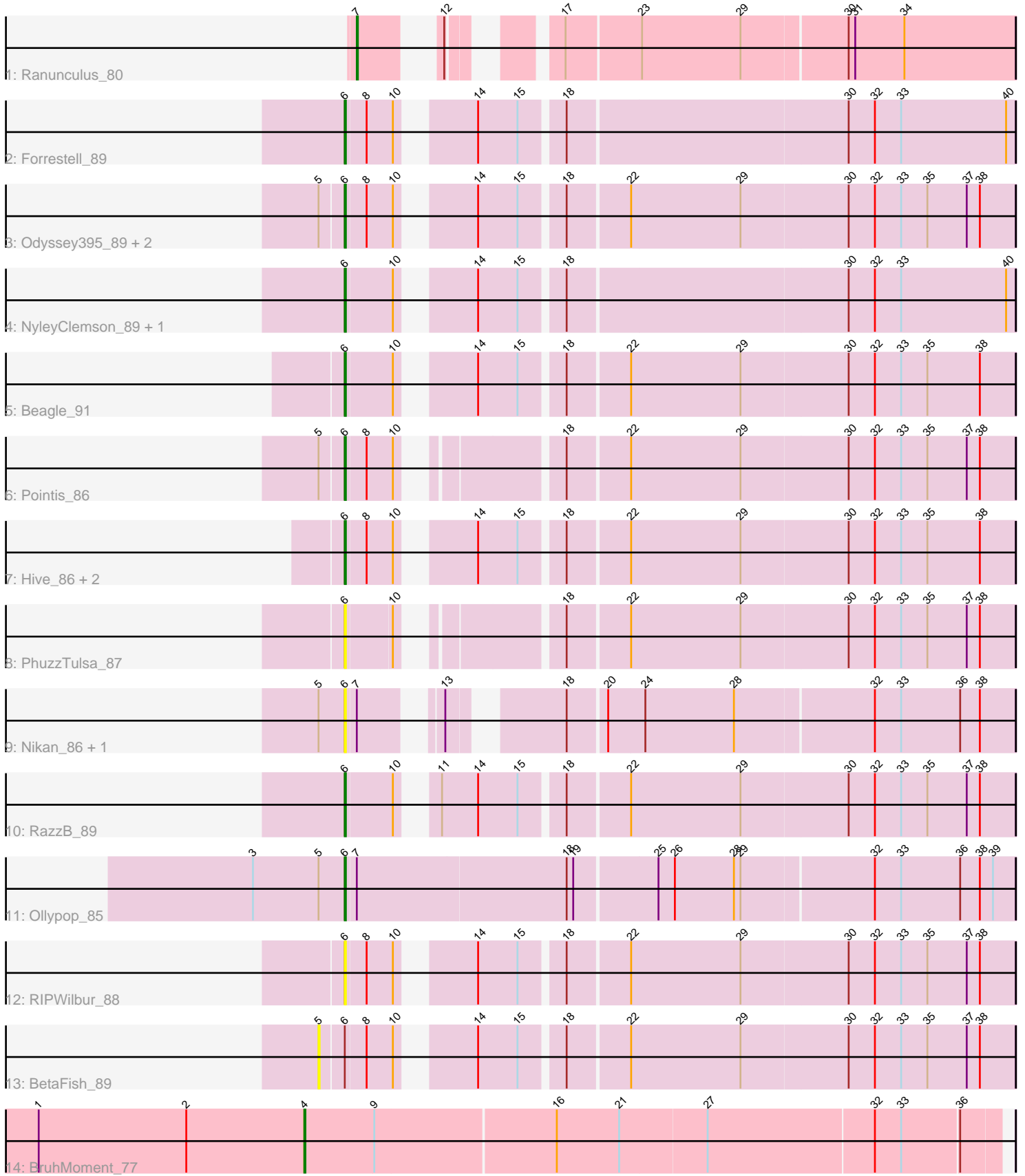


Pham 296979



Note: Tracks are now grouped by subcluster and scaled. Switching in subcluster is indicated by changes in track color. Track scale is now set by default to display the region 30 bp upstream of start 1 to 30 bp downstream of the last possible start. If this default region is judged to be packed too tightly with annotated starts, the track will be further scaled to only show that region of the ORF with annotated starts. This action will be indicated by adding "Zoomed" to the title. For starts, yellow indicates the location of called starts comprised solely of Glimmer/GeneMark auto-annotations, green indicates the location of called starts with at least 1 manual gene annotation.

Pham 296979 Report

This analysis was run 04/25/26 on database version 644.

Pham number 296979 has 20 members, 8 are drafts.

Phages represented in each track:

- Track 1 : Ranunculus_80
- Track 2 : Forrestell_89
- Track 3 : Odyssey395_89, DogYard_89, Kubulix_89
- Track 4 : NyleyClemson_89, MellowYellow_90
- Track 5 : Beagle_91
- Track 6 : Pointis_86
- Track 7 : Hive_86, Popstraw_85, Pureglobe5_89
- Track 8 : PhuzzTulsa_87
- Track 9 : Nikan_86, Ren19_82
- Track 10 : RazzB_89
- Track 11 : Ollypop_85
- Track 12 : RIPWilbur_88
- Track 13 : BetaFish_89
- Track 14 : BruhMoment_77

Summary of Final Annotations (See graph section above for start numbers):

The start number called the most often in the published annotations is 6, it was called in 10 of the 12 non-draft genes in the pham.

Genes that call this "Most Annotated" start:

- Beagle_91, DogYard_89, Forrestell_89, Hive_86, Kubulix_89, MellowYellow_90, Nikan_86, NyleyClemson_89, Odyssey395_89, Ollypop_85, PhuzzTulsa_87, Pointis_86, Popstraw_85, Pureglobe5_89, RIPWilbur_88, RazzB_89, Ren19_82,

Genes that have the "Most Annotated" start but do not call it:

- BetaFish_89,

Genes that do not have the "Most Annotated" start:

- BruhMoment_77, Ranunculus_80,

Summary by start number:

Start 4:

- Found in 1 of 20 (5.0%) of genes in pham
- Manual Annotations of this start: 1 of 12
- Called 100.0% of time when present
- Phage (with cluster) where this start called: BruhMoment_77 (AP3),

Start 5:

- Found in 8 of 20 (40.0%) of genes in pham
- No Manual Annotations of this start.
- Called 12.5% of time when present
- Phage (with cluster) where this start called: BetaFish_89 (AP2),

Start 6:

- Found in 18 of 20 (90.0%) of genes in pham
- Manual Annotations of this start: 10 of 12
- Called 94.4% of time when present
- Phage (with cluster) where this start called: Beagle_91 (AP2), DogYard_89 (AP2), Forrestell_89 (AP2), Hive_86 (AP2), Kubulix_89 (AP2), MellowYellow_90 (AP2), Nikan_86 (AP2), NyleyClemson_89 (AP2), Odyssey395_89 (AP2), Ollypop_85 (AP2), PhuzzTulsa_87 (AP2), Pointis_86 (AP2), Popstraw_85 (AP2), Pureglobe5_89 (AP2), RIPWilbur_88 (AP2), RazzB_89 (AP2), Ren19_82 (AP2),

Start 7:

- Found in 4 of 20 (20.0%) of genes in pham
- Manual Annotations of this start: 1 of 12
- Called 25.0% of time when present
- Phage (with cluster) where this start called: Ranunculus_80 (AP),

Summary by clusters:

There are 3 clusters represented in this pham: AP2, AP, AP3,

Info for manual annotations of cluster AP:

- Start number 7 was manually annotated 1 time for cluster AP.

Info for manual annotations of cluster AP2:

- Start number 6 was manually annotated 10 times for cluster AP2.

Info for manual annotations of cluster AP3:

- Start number 4 was manually annotated 1 time for cluster AP3.

Gene Information:

Gene: Beagle_91 Start: 52495, Stop: 51929, Start Num: 6

Candidate Starts for Beagle_91:

(Start: 6 @52495 has 10 MA's), (10, 52453), (14, 52402), (15, 52366), (18, 52330), (22, 52276), (29, 52177), (30, 52081), (32, 52057), (33, 52033), (35, 52009), (38, 51961),

Gene: BetaFish_89 Start: 52731, Stop: 52144, Start Num: 5

Candidate Starts for BetaFish_89:

(5, 52731), (Start: 6 @52710 has 10 MA's), (8, 52692), (10, 52668), (14, 52617), (15, 52581), (18, 52545), (22, 52491), (29, 52392), (30, 52296), (32, 52272), (33, 52248), (35, 52224), (37, 52188), (38,

52176),

Gene: BruhMoment_77 Start: 50700, Stop: 50080, Start Num: 4

Candidate Starts for BruhMoment_77:

(1, 50943), (2, 50808), (Start: 4 @50700 has 1 MA's), (9, 50637), (16, 50475), (21, 50418), (27, 50340), (32, 50190), (33, 50166), (36, 50115),

Gene: DogYard_89 Start: 52200, Stop: 51634, Start Num: 6

Candidate Starts for DogYard_89:

(5, 52221), (Start: 6 @52200 has 10 MA's), (8, 52182), (10, 52158), (14, 52107), (15, 52071), (18, 52035), (22, 51981), (29, 51882), (30, 51786), (32, 51762), (33, 51738), (35, 51714), (37, 51678), (38, 51666),

Gene: Forrestell_89 Start: 51443, Stop: 50877, Start Num: 6

Candidate Starts for Forrestell_89:

(Start: 6 @51443 has 10 MA's), (8, 51425), (10, 51401), (14, 51350), (15, 51314), (18, 51278), (30, 51029), (32, 51005), (33, 50981), (40, 50885),

Gene: Hive_86 Start: 52180, Stop: 51614, Start Num: 6

Candidate Starts for Hive_86:

(Start: 6 @52180 has 10 MA's), (8, 52162), (10, 52138), (14, 52087), (15, 52051), (18, 52015), (22, 51961), (29, 51862), (30, 51766), (32, 51742), (33, 51718), (35, 51694), (38, 51646),

Gene: Kubulix_89 Start: 51867, Stop: 51301, Start Num: 6

Candidate Starts for Kubulix_89:

(5, 51888), (Start: 6 @51867 has 10 MA's), (8, 51849), (10, 51825), (14, 51774), (15, 51738), (18, 51702), (22, 51648), (29, 51549), (30, 51453), (32, 51429), (33, 51405), (35, 51381), (37, 51345), (38, 51333),

Gene: MellowYellow_90 Start: 52109, Stop: 51543, Start Num: 6

Candidate Starts for MellowYellow_90:

(Start: 6 @52109 has 10 MA's), (10, 52067), (14, 52016), (15, 51980), (18, 51944), (30, 51695), (32, 51671), (33, 51647), (40, 51551),

Gene: Nikan_86 Start: 51845, Stop: 51306, Start Num: 6

Candidate Starts for Nikan_86:

(5, 51869), (Start: 6 @51845 has 10 MA's), (Start: 7 @51836 has 1 MA's), (13, 51785), (18, 51704), (20, 51671), (24, 51638), (28, 51557), (32, 51434), (33, 51410), (36, 51356), (38, 51338),

Gene: NyleyClemson_89 Start: 51727, Stop: 51161, Start Num: 6

Candidate Starts for NyleyClemson_89:

(Start: 6 @51727 has 10 MA's), (10, 51685), (14, 51634), (15, 51598), (18, 51562), (30, 51313), (32, 51289), (33, 51265), (40, 51169),

Gene: Odyssey395_89 Start: 51889, Stop: 51323, Start Num: 6

Candidate Starts for Odyssey395_89:

(5, 51910), (Start: 6 @51889 has 10 MA's), (8, 51871), (10, 51847), (14, 51796), (15, 51760), (18, 51724), (22, 51670), (29, 51571), (30, 51475), (32, 51451), (33, 51427), (35, 51403), (37, 51367), (38, 51355),

Gene: Ollypop_85 Start: 53217, Stop: 52621, Start Num: 6

Candidate Starts for Ollypop_85:

(3, 53301), (5, 53241), (Start: 6 @53217 has 10 MA's), (Start: 7 @53208 has 1 MA's), (18, 53019), (19, 53013), (25, 52941), (26, 52926), (28, 52872), (29, 52866), (32, 52749), (33, 52725), (36, 52671), (38, 52653), (39, 52641),

Gene: PhuzzTulsa_87 Start: 52337, Stop: 51783, Start Num: 6

Candidate Starts for PhuzzTulsa_87:

(Start: 6 @52337 has 10 MA's), (10, 52298), (18, 52184), (22, 52130), (29, 52031), (30, 51935), (32, 51911), (33, 51887), (35, 51863), (37, 51827), (38, 51815),

Gene: Pointis_86 Start: 51785, Stop: 51228, Start Num: 6

Candidate Starts for Pointis_86:

(5, 51806), (Start: 6 @51785 has 10 MA's), (8, 51767), (10, 51743), (18, 51629), (22, 51575), (29, 51476), (30, 51380), (32, 51356), (33, 51332), (35, 51308), (37, 51272), (38, 51260),

Gene: Popstraw_85 Start: 51959, Stop: 51393, Start Num: 6

Candidate Starts for Popstraw_85:

(Start: 6 @51959 has 10 MA's), (8, 51941), (10, 51917), (14, 51866), (15, 51830), (18, 51794), (22, 51740), (29, 51641), (30, 51545), (32, 51521), (33, 51497), (35, 51473), (38, 51425),

Gene: Pureglobe5_89 Start: 52441, Stop: 51875, Start Num: 6

Candidate Starts for Pureglobe5_89:

(Start: 6 @52441 has 10 MA's), (8, 52423), (10, 52399), (14, 52348), (15, 52312), (18, 52276), (22, 52222), (29, 52123), (30, 52027), (32, 52003), (33, 51979), (35, 51955), (38, 51907),

Gene: RIPWilbur_88 Start: 51764, Stop: 51198, Start Num: 6

Candidate Starts for RIPWilbur_88:

(Start: 6 @51764 has 10 MA's), (8, 51746), (10, 51722), (14, 51671), (15, 51635), (18, 51599), (22, 51545), (29, 51446), (30, 51350), (32, 51326), (33, 51302), (35, 51278), (37, 51242), (38, 51230),

Gene: Ranunculus_80 Start: 53611, Stop: 53102, Start Num: 7

Candidate Starts for Ranunculus_80:

(Start: 7 @53611 has 1 MA's), (12, 53566), (17, 53503), (23, 53437), (29, 53347), (30, 53254), (31, 53248), (34, 53203),

Gene: RazzB_89 Start: 51853, Stop: 51287, Start Num: 6

Candidate Starts for RazzB_89:

(Start: 6 @51853 has 10 MA's), (10, 51811), (11, 51793), (14, 51760), (15, 51724), (18, 51688), (22, 51634), (29, 51535), (30, 51439), (32, 51415), (33, 51391), (35, 51367), (37, 51331), (38, 51319),

Gene: Ren19_82 Start: 51391, Stop: 50852, Start Num: 6

Candidate Starts for Ren19_82:

(5, 51415), (Start: 6 @51391 has 10 MA's), (Start: 7 @51382 has 1 MA's), (13, 51331), (18, 51250), (20, 51217), (24, 51184), (28, 51103), (32, 50980), (33, 50956), (36, 50902), (38, 50884),