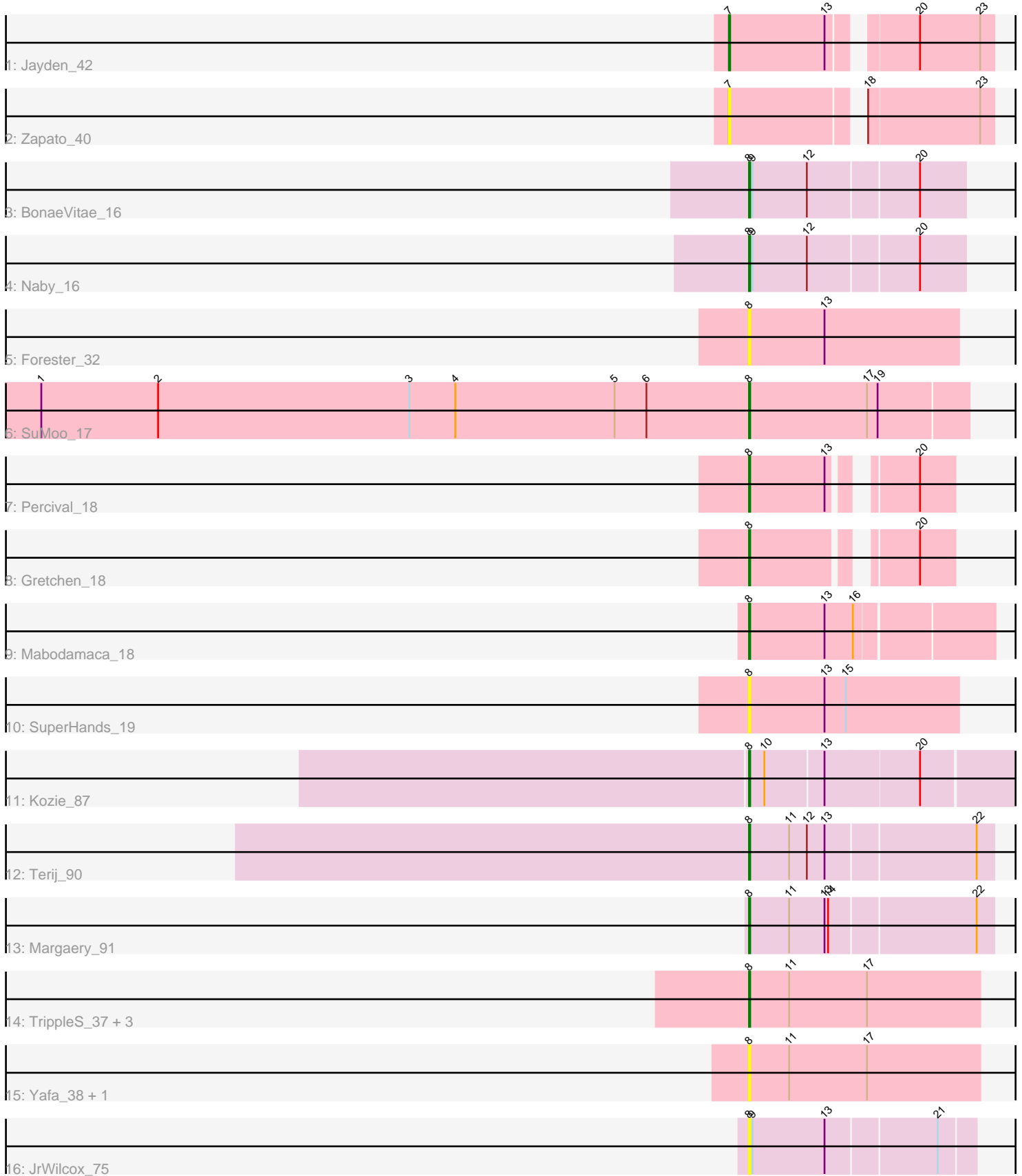


Pham 296983



Note: Tracks are now grouped by subcluster and scaled. Switching in subcluster is indicated by changes in track color. Track scale is now set by default to display the region 30 bp upstream of start 1 to 30 bp downstream of the last possible start. If this default region is judged to be packed too tightly with annotated starts, the track will be further scaled to only show that region of the ORF with annotated starts. This action will be indicated by adding "Zoomed" to the title. For starts, yellow indicates the location of called starts comprised solely of Glimmer/GeneMark auto-annotations, green indicates the location of called starts with at least 1 manual gene annotation.

Pham 296983 Report

This analysis was run 04/25/26 on database version 644.

Pham number 296983 has 20 members, 6 are drafts.

Phages represented in each track:

- Track 1 : Jayden_42
- Track 2 : Zapato_40
- Track 3 : BonaeVitae_16
- Track 4 : Naby_16
- Track 5 : Forester_32
- Track 6 : SuMoo_17
- Track 7 : Percival_18
- Track 8 : Gretchen_18
- Track 9 : Mabodamaca_18
- Track 10 : SuperHands_19
- Track 11 : Kozie_87
- Track 12 : Terij_90
- Track 13 : Margaery_91
- Track 14 : TrippleS_37, Morrill_36, Astartes_38, Atraxi_36
- Track 15 : Yafa_38, ThirteenKH_37
- Track 16 : JrWilcox_75

Summary of Final Annotations (See graph section above for start numbers):

The start number called the most often in the published annotations is 8, it was called in 13 of the 14 non-draft genes in the pham.

Genes that call this "Most Annotated" start:

- Astartes_38, Atraxi_36, BonaeVitae_16, Forester_32, Gretchen_18, JrWilcox_75, Kozie_87, Mabodamaca_18, Margaery_91, Morrill_36, Naby_16, Percival_18, SuMoo_17, SuperHands_19, Terij_90, ThirteenKH_37, TrippleS_37, Yafa_38,

Genes that have the "Most Annotated" start but do not call it:

-

Genes that do not have the "Most Annotated" start:

- Jayden_42, Zapato_40,

Summary by start number:

Start 7:

- Found in 2 of 20 (10.0%) of genes in pham
- Manual Annotations of this start: 1 of 14
- Called 100.0% of time when present
- Phage (with cluster) where this start called: Jayden_42 (EC), Zapato_40 (EC),

Start 8:

- Found in 18 of 20 (90.0%) of genes in pham
- Manual Annotations of this start: 13 of 14
- Called 100.0% of time when present
- Phage (with cluster) where this start called: Astartes_38 (EK2), Atraxi_36 (EK2), BonaeVitae_16 (EE), Forester_32 (EH), Gretchen_18 (EH), JrWilcox_75 (GL), Kozie_87 (EI), Mabodamaca_18 (EH), Margaery_91 (EI), Morrill_36 (EK2), Naby_16 (EE), Percival_18 (EH), SuMoo_17 (EH), SuperHands_19 (EH), Terij_90 (EI), ThirteenKH_37 (EK2), TrippleS_37 (EK2), Yafa_38 (EK2),

Summary by clusters:

There are 6 clusters represented in this pham: EI, EH, EE, EC, GL, EK2,

Info for manual annotations of cluster EC:

- Start number 7 was manually annotated 1 time for cluster EC.

Info for manual annotations of cluster EE:

- Start number 8 was manually annotated 2 times for cluster EE.

Info for manual annotations of cluster EH:

- Start number 8 was manually annotated 4 times for cluster EH.

Info for manual annotations of cluster EI:

- Start number 8 was manually annotated 3 times for cluster EI.

Info for manual annotations of cluster EK2:

- Start number 8 was manually annotated 4 times for cluster EK2.

Gene Information:

Gene: Astartes_38 Start: 40003, Stop: 40197, Start Num: 8

Candidate Starts for Astartes_38:

(Start: 8 @40003 has 13 MA's), (11, 40036), (17, 40102),

Gene: Atraxi_36 Start: 39795, Stop: 39989, Start Num: 8

Candidate Starts for Atraxi_36:

(Start: 8 @39795 has 13 MA's), (11, 39828), (17, 39894),

Gene: BonaeVitae_16 Start: 12640, Stop: 12816, Start Num: 8

Candidate Starts for BonaeVitae_16:

(Start: 8 @12640 has 13 MA's), (9, 12643), (12, 12688), (20, 12778),

Gene: Forester_32 Start: 17625, Stop: 17801, Start Num: 8
Candidate Starts for Forester_32:
(Start: 8 @17625 has 13 MA's), (13, 17688),

Gene: Gretchen_18 Start: 16935, Stop: 17081, Start Num: 8
Candidate Starts for Gretchen_18:
(Start: 8 @16935 has 13 MA's), (20, 17052),

Gene: Jayden_42 Start: 29988, Stop: 30191, Start Num: 7
Candidate Starts for Jayden_42:
(Start: 7 @29988 has 1 MA's), (13, 30069), (20, 30129), (23, 30180),

Gene: JrWilcox_75 Start: 41002, Stop: 41184, Start Num: 8
Candidate Starts for JrWilcox_75:
(Start: 8 @41002 has 13 MA's), (9, 41005), (13, 41065), (21, 41155),

Gene: Kozie_87 Start: 52132, Stop: 52371, Start Num: 8
Candidate Starts for Kozie_87:
(Start: 8 @52132 has 13 MA's), (10, 52144), (13, 52192), (20, 52270),

Gene: Mabodamaca_18 Start: 16125, Stop: 16322, Start Num: 8
Candidate Starts for Mabodamaca_18:
(Start: 8 @16125 has 13 MA's), (13, 16188), (16, 16212),

Gene: Margaery_91 Start: 53390, Stop: 53590, Start Num: 8
Candidate Starts for Margaery_91:
(Start: 8 @53390 has 13 MA's), (11, 53423), (13, 53453), (14, 53456), (22, 53576),

Gene: Morrill_36 Start: 39776, Stop: 39970, Start Num: 8
Candidate Starts for Morrill_36:
(Start: 8 @39776 has 13 MA's), (11, 39809), (17, 39875),

Gene: Naby_16 Start: 12637, Stop: 12813, Start Num: 8
Candidate Starts for Naby_16:
(Start: 8 @12637 has 13 MA's), (9, 12640), (12, 12685), (20, 12775),

Gene: Percival_18 Start: 16769, Stop: 16915, Start Num: 8
Candidate Starts for Percival_18:
(Start: 8 @16769 has 13 MA's), (13, 16832), (20, 16886),

Gene: SuMoo_17 Start: 15090, Stop: 15272, Start Num: 8
Candidate Starts for SuMoo_17:
(1, 14490), (2, 14589), (3, 14802), (4, 14841), (5, 14976), (6, 15003), (Start: 8 @15090 has 13 MA's),
(17, 15189), (19, 15198),

Gene: SuperHands_19 Start: 17631, Stop: 17807, Start Num: 8
Candidate Starts for SuperHands_19:
(Start: 8 @17631 has 13 MA's), (13, 17694), (15, 17712),

Gene: Terij_90 Start: 52970, Stop: 53170, Start Num: 8
Candidate Starts for Terij_90:
(Start: 8 @52970 has 13 MA's), (11, 53003), (12, 53018), (13, 53033), (22, 53156),

Gene: ThirteenKH_37 Start: 39786, Stop: 39980, Start Num: 8
Candidate Starts for ThirteenKH_37:
(Start: 8 @39786 has 13 MA's), (11, 39819), (17, 39885),

Gene: TrippleS_37 Start: 39934, Stop: 40128, Start Num: 8
Candidate Starts for TrippleS_37:
(Start: 8 @39934 has 13 MA's), (11, 39967), (17, 40033),

Gene: Yafa_38 Start: 39690, Stop: 39884, Start Num: 8
Candidate Starts for Yafa_38:
(Start: 8 @39690 has 13 MA's), (11, 39723), (17, 39789),

Gene: Zapato_40 Start: 29806, Stop: 30009, Start Num: 7
Candidate Starts for Zapato_40:
(Start: 7 @29806 has 1 MA's), (18, 29905), (23, 29998),