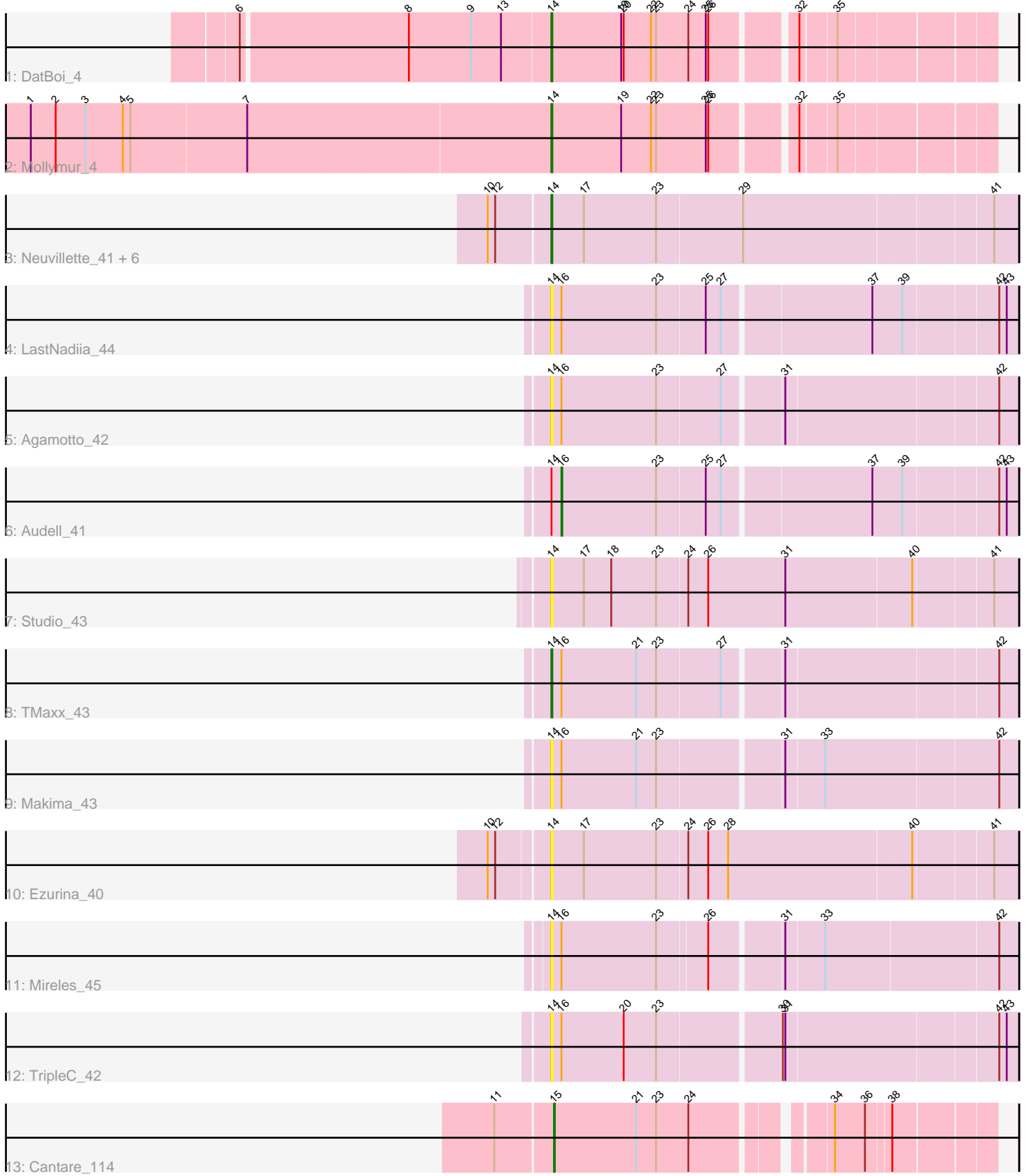


Pham 296986



Note: Tracks are now grouped by subcluster and scaled. Switching in subcluster is indicated by changes in track color. Track scale is now set by default to display the region 30 bp upstream of start 1 to 30 bp downstream of the last possible start. If this default region is judged to be packed too tightly with annotated starts, the track will be further scaled to only show that region of the ORF with annotated starts. This action will be indicated by adding "Zoomed" to the title. For starts, yellow indicates the location of called starts comprised solely of Glimmer/GeneMark auto-annotations, green indicates the location of called starts with at least 1 manual gene annotation.

Pham 296986 Report

This analysis was run 04/25/26 on database version 644.

Pham number 296986 has 19 members, 13 are drafts.

Phages represented in each track:

- Track 1 : DatBoi_4
- Track 2 : Mollymur_4
- Track 3 : Neuville_41, Roberts_41, Gerri43_42, AnnabelLee_41, ChamoyPickle_43, ChipsNGuac_42, CardboardBox_42
- Track 4 : LastNadiia_44
- Track 5 : Agamoto_42
- Track 6 : Audell_41
- Track 7 : Studio_43
- Track 8 : TMaxx_43
- Track 9 : Makima_43
- Track 10 : Ezurina_40
- Track 11 : Mireles_45
- Track 12 : TripleC_42
- Track 13 : Cantare_114

Summary of Final Annotations (See graph section above for start numbers):

The start number called the most often in the published annotations is 14, it was called in 4 of the 6 non-draft genes in the pham.

Genes that call this "Most Annotated" start:

- Agamoto_42, AnnabelLee_41, CardboardBox_42, ChamoyPickle_43, ChipsNGuac_42, DatBoi_4, Ezurina_40, Gerri43_42, LastNadiia_44, Makima_43, Mireles_45, Mollymur_4, Neuville_41, Roberts_41, Studio_43, TMaxx_43, TripleC_42,

Genes that have the "Most Annotated" start but do not call it:

- Audell_41,

Genes that do not have the "Most Annotated" start:

- Cantare_114,

Summary by start number:

Start 14:

- Found in 18 of 19 (94.7%) of genes in pham
- Manual Annotations of this start: 4 of 6
- Called 94.4% of time when present
- Phage (with cluster) where this start called: Agamoto_42 (FR), AnnabelLee_41 (FR), CardboardBox_42 (FR), ChamoyPickle_43 (FR), ChipsNGuac_42 (FR), DatBoi_4 (DL), Ezurina_40 (FR), Gerri43_42 (FR), LastNadiia_44 (FR), Makima_43 (FR), Mireles_45 (FR), Mollymur_4 (DL), Neuville_41 (FR), Roberts_41 (FR), Studio_43 (FR), TMaxx_43 (FR), TripleC_42 (FR),

Start 15:

- Found in 1 of 19 (5.3%) of genes in pham
- Manual Annotations of this start: 1 of 6
- Called 100.0% of time when present
- Phage (with cluster) where this start called: Cantare_114 (singleton),

Start 16:

- Found in 7 of 19 (36.8%) of genes in pham
- Manual Annotations of this start: 1 of 6
- Called 14.3% of time when present
- Phage (with cluster) where this start called: Audell_41 (FR),

Summary by clusters:

There are 3 clusters represented in this pham: FR, singleton, DL,

Info for manual annotations of cluster DL:

- Start number 14 was manually annotated 2 times for cluster DL.

Info for manual annotations of cluster FR:

- Start number 14 was manually annotated 2 times for cluster FR.
- Start number 16 was manually annotated 1 time for cluster FR.

Gene Information:

Gene: Agamoto_42 Start: 32271, Stop: 31735, Start Num: 14

Candidate Starts for Agamoto_42:

(Start: 14 @32271 has 4 MA's), (Start: 16 @32259 has 1 MA's), (23, 32145), (27, 32070), (31, 32004), (42, 31758),

Gene: AnnabelLee_41 Start: 29186, Stop: 28641, Start Num: 14

Candidate Starts for AnnabelLee_41:

(10, 29258), (12, 29249), (Start: 14 @29186 has 4 MA's), (17, 29147), (23, 29060), (29, 28958), (41, 28670),

Gene: Audell_41 Start: 31855, Stop: 31328, Start Num: 16

Candidate Starts for Audell_41:

(Start: 14 @31867 has 4 MA's), (Start: 16 @31855 has 1 MA's), (23, 31741), (25, 31684), (27, 31666), (37, 31495), (39, 31459), (42, 31351), (43, 31342),

Gene: Cantare_114 Start: 82997, Stop: 83470, Start Num: 15

Candidate Starts for Cantare_114:

(11, 82931), (Start: 15 @82997 has 1 MA's), (21, 83096), (23, 83120), (24, 83156), (34, 83297), (36, 83333), (38, 83360),

Gene: CardboardBox_42 Start: 29189, Stop: 28644, Start Num: 14

Candidate Starts for CardboardBox_42:

(10, 29261), (12, 29252), (Start: 14 @29189 has 4 MA's), (17, 29150), (23, 29063), (29, 28961), (41, 28673),

Gene: ChamoyPickle_43 Start: 29729, Stop: 29184, Start Num: 14

Candidate Starts for ChamoyPickle_43:

(10, 29801), (12, 29792), (Start: 14 @29729 has 4 MA's), (17, 29690), (23, 29603), (29, 29501), (41, 29213),

Gene: ChipsNGuac_42 Start: 29189, Stop: 28644, Start Num: 14

Candidate Starts for ChipsNGuac_42:

(10, 29261), (12, 29252), (Start: 14 @29189 has 4 MA's), (17, 29150), (23, 29063), (29, 28961), (41, 28673),

Gene: DatBoi_4 Start: 1881, Stop: 2372, Start Num: 14

Candidate Starts for DatBoi_4:

(6, 1518), (8, 1713), (9, 1788), (13, 1824), (Start: 14 @1881 has 4 MA's), (19, 1965), (20, 1968), (22, 2001), (23, 2007), (24, 2046), (25, 2067), (26, 2070), (32, 2160), (35, 2199),

Gene: Ezurina_40 Start: 30276, Stop: 29731, Start Num: 14

Candidate Starts for Ezurina_40:

(10, 30345), (12, 30336), (Start: 14 @30276 has 4 MA's), (17, 30237), (23, 30150), (24, 30114), (26, 30090), (28, 30066), (40, 29850), (41, 29760),

Gene: Gerri43_42 Start: 29189, Stop: 28644, Start Num: 14

Candidate Starts for Gerri43_42:

(10, 29261), (12, 29252), (Start: 14 @29189 has 4 MA's), (17, 29150), (23, 29063), (29, 28961), (41, 28673),

Gene: LastNadiia_44 Start: 31833, Stop: 31294, Start Num: 14

Candidate Starts for LastNadiia_44:

(Start: 14 @31833 has 4 MA's), (Start: 16 @31821 has 1 MA's), (23, 31707), (25, 31650), (27, 31632), (37, 31461), (39, 31425), (42, 31317), (43, 31308),

Gene: Makima_43 Start: 30935, Stop: 30399, Start Num: 14

Candidate Starts for Makima_43:

(Start: 14 @30935 has 4 MA's), (Start: 16 @30923 has 1 MA's), (21, 30833), (23, 30809), (31, 30668), (33, 30623), (42, 30419),

Gene: Mireles_45 Start: 30478, Stop: 29945, Start Num: 14

Candidate Starts for Mireles_45:

(Start: 14 @30478 has 4 MA's), (Start: 16 @30466 has 1 MA's), (23, 30352), (26, 30295), (31, 30214), (33, 30169), (42, 29965),

Gene: Mollymur_4 Start: 1661, Stop: 2152, Start Num: 14

Candidate Starts for Mollymur_4:

(1, 1046), (2, 1076), (3, 1112), (4, 1157), (5, 1166), (7, 1304), (Start: 14 @1661 has 4 MA's), (19, 1745), (22, 1781), (23, 1787), (25, 1847), (26, 1850), (32, 1940), (35, 1979),

Gene: Neuville_41 Start: 29189, Stop: 28644, Start Num: 14

Candidate Starts for Neuville_41:

(10, 29261), (12, 29252), (Start: 14 @29189 has 4 MA's), (17, 29150), (23, 29063), (29, 28961), (41, 28673),

Gene: Roberts_41 Start: 29189, Stop: 28644, Start Num: 14

Candidate Starts for Roberts_41:

(10, 29261), (12, 29252), (Start: 14 @29189 has 4 MA's), (17, 29150), (23, 29063), (29, 28961), (41, 28673),

Gene: Studio_43 Start: 30552, Stop: 30007, Start Num: 14

Candidate Starts for Studio_43:

(Start: 14 @30552 has 4 MA's), (17, 30513), (18, 30480), (23, 30426), (24, 30390), (26, 30366), (31, 30273), (40, 30126), (41, 30036),

Gene: TMaxx_43 Start: 30121, Stop: 29585, Start Num: 14

Candidate Starts for TMaxx_43:

(Start: 14 @30121 has 4 MA's), (Start: 16 @30109 has 1 MA's), (21, 30019), (23, 29995), (27, 29920), (31, 29854), (42, 29608),

Gene: TripleC_42 Start: 32451, Stop: 31915, Start Num: 14

Candidate Starts for TripleC_42:

(Start: 14 @32451 has 4 MA's), (Start: 16 @32439 has 1 MA's), (20, 32364), (23, 32325), (30, 32187), (31, 32184), (42, 31938), (43, 31929),