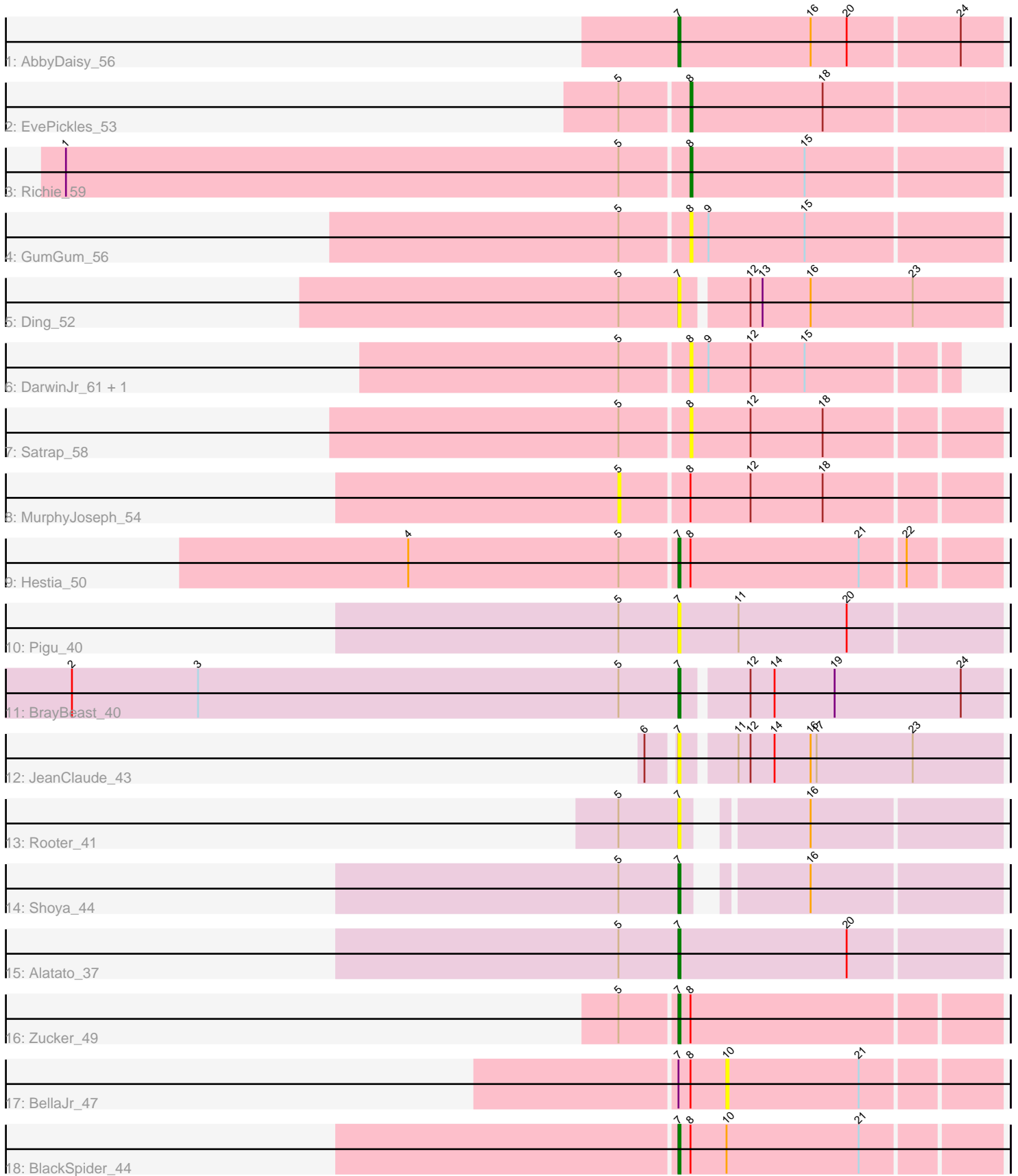


Pham 296987



Note: Tracks are now grouped by subcluster and scaled. Switching in subcluster is indicated by changes in track color. Track scale is now set by default to display the region 30 bp upstream of start 1 to 30 bp downstream of the last possible start. If this default region is judged to be packed too tightly with annotated starts, the track will be further scaled to only show that region of the ORF with annotated starts. This action will be indicated by adding "Zoomed" to the title. For starts, yellow indicates the location of called starts comprised solely of Glimmer/GeneMark auto-annotations, green indicates the location of called starts with at least 1 manual gene annotation.

## Pham 296987 Report

This analysis was run 04/25/26 on database version 644.

Pham number 296987 has 19 members, 10 are drafts.

Phages represented in each track:

- Track 1 : AbbyDaisy\_56
- Track 2 : EvePickles\_53
- Track 3 : Richie\_59
- Track 4 : GumGum\_56
- Track 5 : Ding\_52
- Track 6 : DarwinJr\_61, Crescenzo\_60
- Track 7 : Satrap\_58
- Track 8 : MurphyJoseph\_54
- Track 9 : Hestia\_50
- Track 10 : Pigu\_40
- Track 11 : BrayBeast\_40
- Track 12 : JeanClaude\_43
- Track 13 : Rooter\_41
- Track 14 : Shoya\_44
- Track 15 : Alatato\_37
- Track 16 : Zucker\_49
- Track 17 : BellaJr\_47
- Track 18 : BlackSpider\_44

### ***Summary of Final Annotations (See graph section above for start numbers):***

The start number called the most often in the published annotations is 7, it was called in 7 of the 9 non-draft genes in the pham.

Genes that call this "Most Annotated" start:

- AbbyDaisy\_56, Alatato\_37, BlackSpider\_44, BrayBeast\_40, Ding\_52, Hestia\_50, JeanClaude\_43, Pigu\_40, Rooter\_41, Shoya\_44, Zucker\_49,

Genes that have the "Most Annotated" start but do not call it:

- BellaJr\_47,

Genes that do not have the "Most Annotated" start:

- Crescenzo\_60, DarwinJr\_61, EvePickles\_53, GumGum\_56, MurphyJoseph\_54, Richie\_59, Satrap\_58,

## Summary by start number:

### Start 5:

- Found in 15 of 19 ( 78.9% ) of genes in pham
- No Manual Annotations of this start.
- Called 6.7% of time when present
- Phage (with cluster) where this start called: MurphyJoseph\_54 (AY),

### Start 7:

- Found in 12 of 19 ( 63.2% ) of genes in pham
- Manual Annotations of this start: 7 of 9
- Called 91.7% of time when present
- Phage (with cluster) where this start called: AbbyDaisy\_56 (AY), Alatato\_37 (FB), BlackSpider\_44 (FN), BrayBeast\_40 (FB), Ding\_52 (AY), Hestia\_50 (AY), JeanClaude\_43 (FB), Pigu\_40 (FB), Rooter\_41 (FB), Shoya\_44 (FB), Zucker\_49 (FN),

### Start 8:

- Found in 11 of 19 ( 57.9% ) of genes in pham
- Manual Annotations of this start: 2 of 9
- Called 54.5% of time when present
- Phage (with cluster) where this start called: Crescenzo\_60 (AY), DarwinJr\_61 (AY), EvePickles\_53 (AY), GumGum\_56 (AY), Richie\_59 (AY), Satrap\_58 (AY),

### Start 10:

- Found in 2 of 19 ( 10.5% ) of genes in pham
- No Manual Annotations of this start.
- Called 50.0% of time when present
- Phage (with cluster) where this start called: BellaJr\_47 (FN),

## Summary by clusters:

There are 3 clusters represented in this pham: AY, FB, FN,

### Info for manual annotations of cluster AY:

- Start number 7 was manually annotated 2 times for cluster AY.
- Start number 8 was manually annotated 2 times for cluster AY.

### Info for manual annotations of cluster FB:

- Start number 7 was manually annotated 3 times for cluster FB.

### Info for manual annotations of cluster FN:

- Start number 7 was manually annotated 2 times for cluster FN.

## Gene Information:

Gene: AbbyDaisy\_56 Start: 33760, Stop: 33918, Start Num: 7

Candidate Starts for AbbyDaisy\_56:

(Start: 7 @33760 has 7 MA's), (16, 33826), (20, 33844), (24, 33898),

Gene: Alatato\_37 Start: 26513, Stop: 26671, Start Num: 7

Candidate Starts for Alatato\_37:

(5, 26483), (Start: 7 @26513 has 7 MA's), (20, 26597),

Gene: BellaJr\_47 Start: 31626, Stop: 31757, Start Num: 10

Candidate Starts for BellaJr\_47:

(Start: 7 @31602 has 7 MA's), (Start: 8 @31608 has 2 MA's), (10, 31626), (21, 31692),

Gene: BlackSpider\_44 Start: 30183, Stop: 30338, Start Num: 7

Candidate Starts for BlackSpider\_44:

(Start: 7 @30183 has 7 MA's), (Start: 8 @30189 has 2 MA's), (10, 30207), (21, 30273),

Gene: BrayBeast\_40 Start: 27217, Stop: 27372, Start Num: 7

Candidate Starts for BrayBeast\_40:

(2, 26914), (3, 26977), (5, 27187), (Start: 7 @27217 has 7 MA's), (12, 27247), (14, 27259), (19, 27289), (24, 27352),

Gene: Crescenzo\_60 Start: 34595, Stop: 34744, Start Num: 8

Candidate Starts for Crescenzo\_60:

(5, 34562), (Start: 8 @34595 has 2 MA's), (9, 34604), (12, 34625), (15, 34652),

Gene: DarwinJr\_61 Start: 34663, Stop: 34791, Start Num: 8

Candidate Starts for DarwinJr\_61:

(5, 34630), (Start: 8 @34663 has 2 MA's), (9, 34672), (12, 34693), (15, 34720),

Gene: Ding\_52 Start: 31794, Stop: 31949, Start Num: 7

Candidate Starts for Ding\_52:

(5, 31764), (Start: 7 @31794 has 7 MA's), (12, 31824), (13, 31830), (16, 31854), (23, 31905),

Gene: EvePickles\_53 Start: 33650, Stop: 33805, Start Num: 8

Candidate Starts for EvePickles\_53:

(5, 33617), (Start: 8 @33650 has 2 MA's), (18, 33716),

Gene: GumGum\_56 Start: 32584, Stop: 32736, Start Num: 8

Candidate Starts for GumGum\_56:

(5, 32551), (Start: 8 @32584 has 2 MA's), (9, 32593), (15, 32641),

Gene: Hestia\_50 Start: 31086, Stop: 31241, Start Num: 7

Candidate Starts for Hestia\_50:

(4, 30954), (5, 31059), (Start: 7 @31086 has 7 MA's), (Start: 8 @31092 has 2 MA's), (21, 31176), (22, 31197),

Gene: JeanClaude\_43 Start: 26505, Stop: 26660, Start Num: 7

Candidate Starts for JeanClaude\_43:

(6, 26493), (Start: 7 @26505 has 7 MA's), (11, 26529), (12, 26535), (14, 26547), (16, 26565), (17, 26568), (23, 26616),

Gene: MurphyJoseph\_54 Start: 32347, Stop: 32529, Start Num: 5

Candidate Starts for MurphyJoseph\_54:

(5, 32347), (Start: 8 @32380 has 2 MA's), (12, 32410), (18, 32446),

Gene: Pigu\_40 Start: 26382, Stop: 26540, Start Num: 7

Candidate Starts for Pigu\_40:

(5, 26352), (Start: 7 @26382 has 7 MA's), (11, 26412), (20, 26466),

Gene: Richie\_59 Start: 34120, Stop: 34272, Start Num: 8

Candidate Starts for Richie\_59:

(1, 33811), (5, 34087), (Start: 8 @34120 has 2 MA's), (15, 34177),

Gene: Rooter\_41 Start: 26755, Stop: 26895, Start Num: 7

Candidate Starts for Rooter\_41:

(5, 26725), (Start: 7 @26755 has 7 MA's), (16, 26803),

Gene: Satrap\_58 Start: 33582, Stop: 33731, Start Num: 8

Candidate Starts for Satrap\_58:

(5, 33549), (Start: 8 @33582 has 2 MA's), (12, 33612), (18, 33648),

Gene: Shoya\_44 Start: 27531, Stop: 27671, Start Num: 7

Candidate Starts for Shoya\_44:

(5, 27501), (Start: 7 @27531 has 7 MA's), (16, 27579),

Gene: Zucker\_49 Start: 32109, Stop: 32264, Start Num: 7

Candidate Starts for Zucker\_49:

(5, 32082), (Start: 7 @32109 has 7 MA's), (Start: 8 @32115 has 2 MA's),