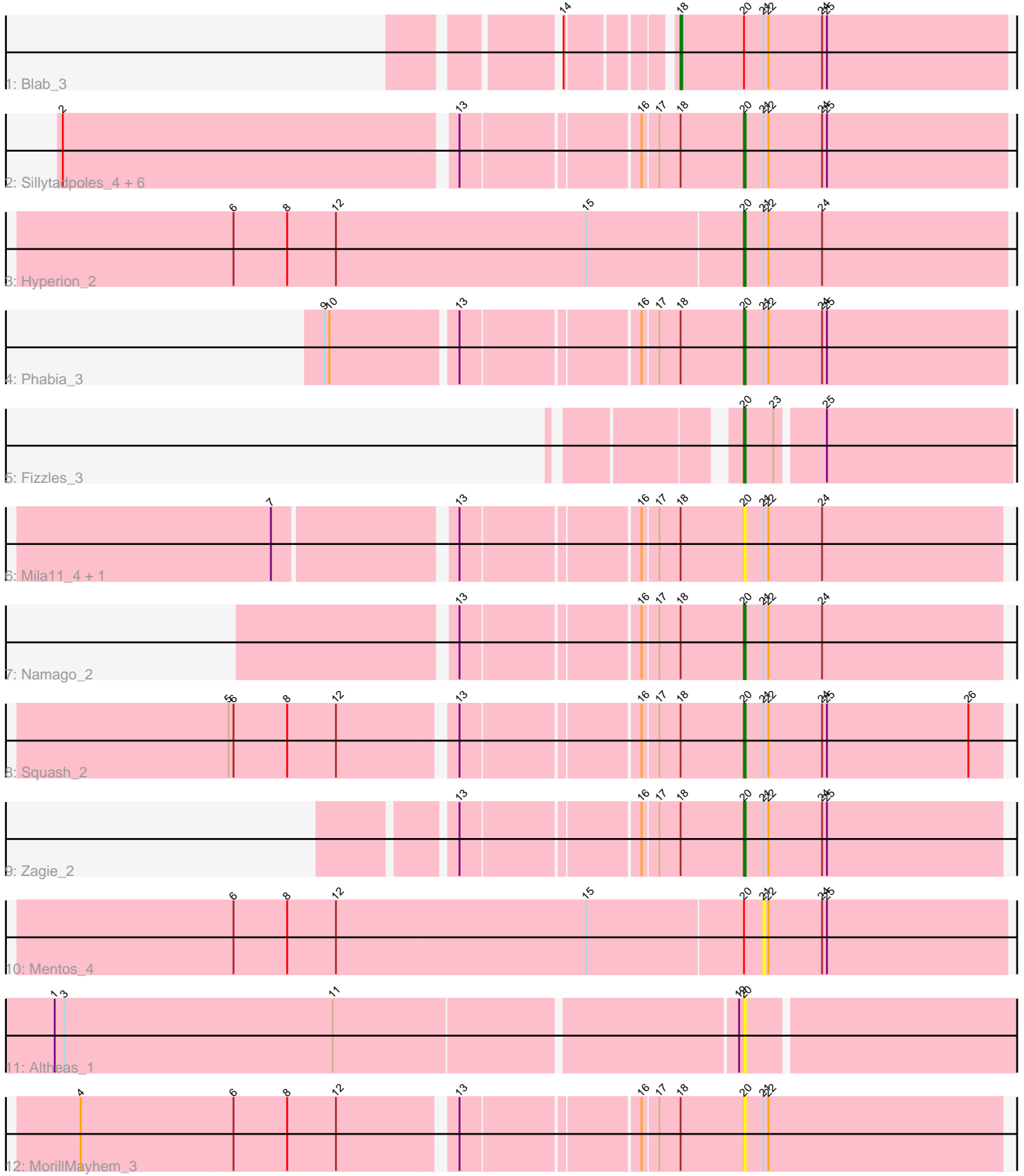


Pham 296997



Note: Tracks are now grouped by subcluster and scaled. Switching in subcluster is indicated by changes in track color. Track scale is now set by default to display the region 30 bp upstream of start 1 to 30 bp downstream of the last possible start. If this default region is judged to be packed too tightly with annotated starts, the track will be further scaled to only show that region of the ORF with annotated starts. This action will be indicated by adding "Zoomed" to the title. For starts, yellow indicates the location of called starts comprised solely of Glimmer/GeneMark auto-annotations, green indicates the location of called starts with at least 1 manual gene annotation.

Pham 296997 Report

This analysis was run 04/25/26 on database version 644.

Pham number 296997 has 19 members, 5 are drafts.

Phages represented in each track:

- Track 1 : Blab_3
- Track 2 : Sillytadpoles_4, Quammi_3, Wheelie_4, Rudy_3, Llemily_4, DonaldDuck_4, Viceroy_4
- Track 3 : Hyperion_2
- Track 4 : Phabia_3
- Track 5 : Fizzles_3
- Track 6 : Mila11_4, BaconCheese_3
- Track 7 : Namago_2
- Track 8 : Squash_2
- Track 9 : Zagie_2
- Track 10 : Mentos_4
- Track 11 : Altheas_1
- Track 12 : MorillMayhem_3

Summary of Final Annotations (See graph section above for start numbers):

The start number called the most often in the published annotations is 20, it was called in 13 of the 14 non-draft genes in the pham.

Genes that call this "Most Annotated" start:

- Altheas_1, BaconCheese_3, DonaldDuck_4, Fizzles_3, Hyperion_2, Llemily_4, Mila11_4, MorillMayhem_3, Namago_2, Phabia_3, Quammi_3, Rudy_3, Sillytadpoles_4, Squash_2, Viceroy_4, Wheelie_4, Zagie_2,

Genes that have the "Most Annotated" start but do not call it:

- Blab_3, Mentos_4,

Genes that do not have the "Most Annotated" start:

-

Summary by start number:

Start 18:

- Found in 15 of 19 (78.9%) of genes in pham

- Manual Annotations of this start: 1 of 14
- Called 6.7% of time when present
- Phage (with cluster) where this start called: Blab_3 (EG),

Start 20:

- Found in 19 of 19 (100.0%) of genes in pham
- Manual Annotations of this start: 13 of 14
- Called 89.5% of time when present
- Phage (with cluster) where this start called: Altheas_1 (EG), BaconCheese_3 (EG), DonaldDuck_4 (EG), Fizzles_3 (EG), Hyperion_2 (EG), Llemily_4 (EG), Mila11_4 (EG), MorillMayhem_3 (EG), Namago_2 (EG), Phabia_3 (EG), Quammi_3 (EG), Rudy_3 (EG), Sillytadpoles_4 (EG), Squash_2 (EG), Viceroy_4 (EG), Wheelie_4 (EG), Zagie_2 (EG),

Start 21:

- Found in 17 of 19 (89.5%) of genes in pham
- No Manual Annotations of this start.
- Called 5.9% of time when present
- Phage (with cluster) where this start called: Mentos_4 (EG),

Summary by clusters:

There is one cluster represented in this pham: EG

Info for manual annotations of cluster EG:

- Start number 18 was manually annotated 1 time for cluster EG.
- Start number 20 was manually annotated 13 times for cluster EG.

Gene Information:

Gene: Altheas_1 Start: 875, Stop: 705, Start Num: 20

Candidate Starts for Altheas_1:

(1, 1286), (3, 1280), (11, 1115), (19, 878), (Start: 20 @875 has 13 MA's),

Gene: BaconCheese_3 Start: 1395, Stop: 1237, Start Num: 20

Candidate Starts for BaconCheese_3:

(7, 1659), (13, 1557), (16, 1455), (17, 1446), (Start: 18 @1434 has 1 MA's), (Start: 20 @1395 has 13 MA's), (21, 1383), (22, 1380), (24, 1347),

Gene: Blab_3 Start: 1114, Stop: 914, Start Num: 18

Candidate Starts for Blab_3:

(14, 1168), (Start: 18 @1114 has 1 MA's), (Start: 20 @1075 has 13 MA's), (21, 1063), (22, 1060), (24, 1027), (25, 1024),

Gene: DonaldDuck_4 Start: 1323, Stop: 1168, Start Num: 20

Candidate Starts for DonaldDuck_4:

(2, 1719), (13, 1485), (16, 1383), (17, 1374), (Start: 18 @1362 has 1 MA's), (Start: 20 @1323 has 13 MA's), (21, 1311), (22, 1308), (24, 1275), (25, 1272),

Gene: Fizzles_3 Start: 1493, Stop: 1335, Start Num: 20

Candidate Starts for Fizzles_3:

(Start: 20 @1493 has 13 MA's), (23, 1475), (25, 1448),

Gene: Hyperion_2 Start: 1074, Stop: 913, Start Num: 20

Candidate Starts for Hyperion_2:

(6, 1383), (8, 1350), (12, 1320), (15, 1167), (Start: 20 @1074 has 13 MA's), (21, 1062), (22, 1059), (24, 1026),

Gene: Llemily_4 Start: 1324, Stop: 1169, Start Num: 20

Candidate Starts for Llemily_4:

(2, 1720), (13, 1486), (16, 1384), (17, 1375), (Start: 18 @1363 has 1 MA's), (Start: 20 @1324 has 13 MA's), (21, 1312), (22, 1309), (24, 1276), (25, 1273),

Gene: Mentos_4 Start: 1398, Stop: 1249, Start Num: 21

Candidate Starts for Mentos_4:

(6, 1719), (8, 1686), (12, 1656), (15, 1503), (Start: 20 @1410 has 13 MA's), (21, 1398), (22, 1395), (24, 1362), (25, 1359),

Gene: Mila11_4 Start: 1380, Stop: 1222, Start Num: 20

Candidate Starts for Mila11_4:

(7, 1644), (13, 1542), (16, 1440), (17, 1431), (Start: 18 @1419 has 1 MA's), (Start: 20 @1380 has 13 MA's), (21, 1368), (22, 1365), (24, 1332),

Gene: MorillMayhem_3 Start: 1397, Stop: 1239, Start Num: 20

Candidate Starts for MorillMayhem_3:

(4, 1781), (6, 1688), (8, 1655), (12, 1625), (13, 1559), (16, 1457), (17, 1448), (Start: 18 @1436 has 1 MA's), (Start: 20 @1397 has 13 MA's), (21, 1385), (22, 1382),

Gene: Namago_2 Start: 991, Stop: 833, Start Num: 20

Candidate Starts for Namago_2:

(13, 1153), (16, 1051), (17, 1042), (Start: 18 @1030 has 1 MA's), (Start: 20 @991 has 13 MA's), (21, 979), (22, 976), (24, 943),

Gene: Phabia_3 Start: 1324, Stop: 1163, Start Num: 20

Candidate Starts for Phabia_3:

(9, 1561), (10, 1558), (13, 1486), (16, 1384), (17, 1375), (Start: 18 @1363 has 1 MA's), (Start: 20 @1324 has 13 MA's), (21, 1312), (22, 1309), (24, 1276), (25, 1273),

Gene: Quammi_3 Start: 1328, Stop: 1167, Start Num: 20

Candidate Starts for Quammi_3:

(2, 1724), (13, 1490), (16, 1388), (17, 1379), (Start: 18 @1367 has 1 MA's), (Start: 20 @1328 has 13 MA's), (21, 1316), (22, 1313), (24, 1280), (25, 1277),

Gene: Rudy_3 Start: 1328, Stop: 1167, Start Num: 20

Candidate Starts for Rudy_3:

(2, 1724), (13, 1490), (16, 1388), (17, 1379), (Start: 18 @1367 has 1 MA's), (Start: 20 @1328 has 13 MA's), (21, 1316), (22, 1313), (24, 1280), (25, 1277),

Gene: Sillytadpoles_4 Start: 1326, Stop: 1165, Start Num: 20

Candidate Starts for Sillytadpoles_4:

(2, 1722), (13, 1488), (16, 1386), (17, 1377), (Start: 18 @1365 has 1 MA's), (Start: 20 @1326 has 13 MA's), (21, 1314), (22, 1311), (24, 1278), (25, 1275),

Gene: Squash_2 Start: 1005, Stop: 847, Start Num: 20

Candidate Starts for Squash_2:

(5, 1299), (6, 1296), (8, 1263), (12, 1233), (13, 1167), (16, 1065), (17, 1056), (Start: 18 @1044 has 1 MA's), (Start: 20 @1005 has 13 MA's), (21, 993), (22, 990), (24, 957), (25, 954), (26, 867),

Gene: Viceroy_4 Start: 1328, Stop: 1167, Start Num: 20

Candidate Starts for Viceroy_4:

(2, 1724), (13, 1490), (16, 1388), (17, 1379), (Start: 18 @1367 has 1 MA's), (Start: 20 @1328 has 13 MA's), (21, 1316), (22, 1313), (24, 1280), (25, 1277),

Gene: Wheelie_4 Start: 1323, Stop: 1168, Start Num: 20

Candidate Starts for Wheelie_4:

(2, 1719), (13, 1485), (16, 1383), (17, 1374), (Start: 18 @1362 has 1 MA's), (Start: 20 @1323 has 13 MA's), (21, 1311), (22, 1308), (24, 1275), (25, 1272),

Gene: Zagie_2 Start: 996, Stop: 838, Start Num: 20

Candidate Starts for Zagie_2:

(13, 1158), (16, 1056), (17, 1047), (Start: 18 @1035 has 1 MA's), (Start: 20 @996 has 13 MA's), (21, 984), (22, 981), (24, 948), (25, 945),