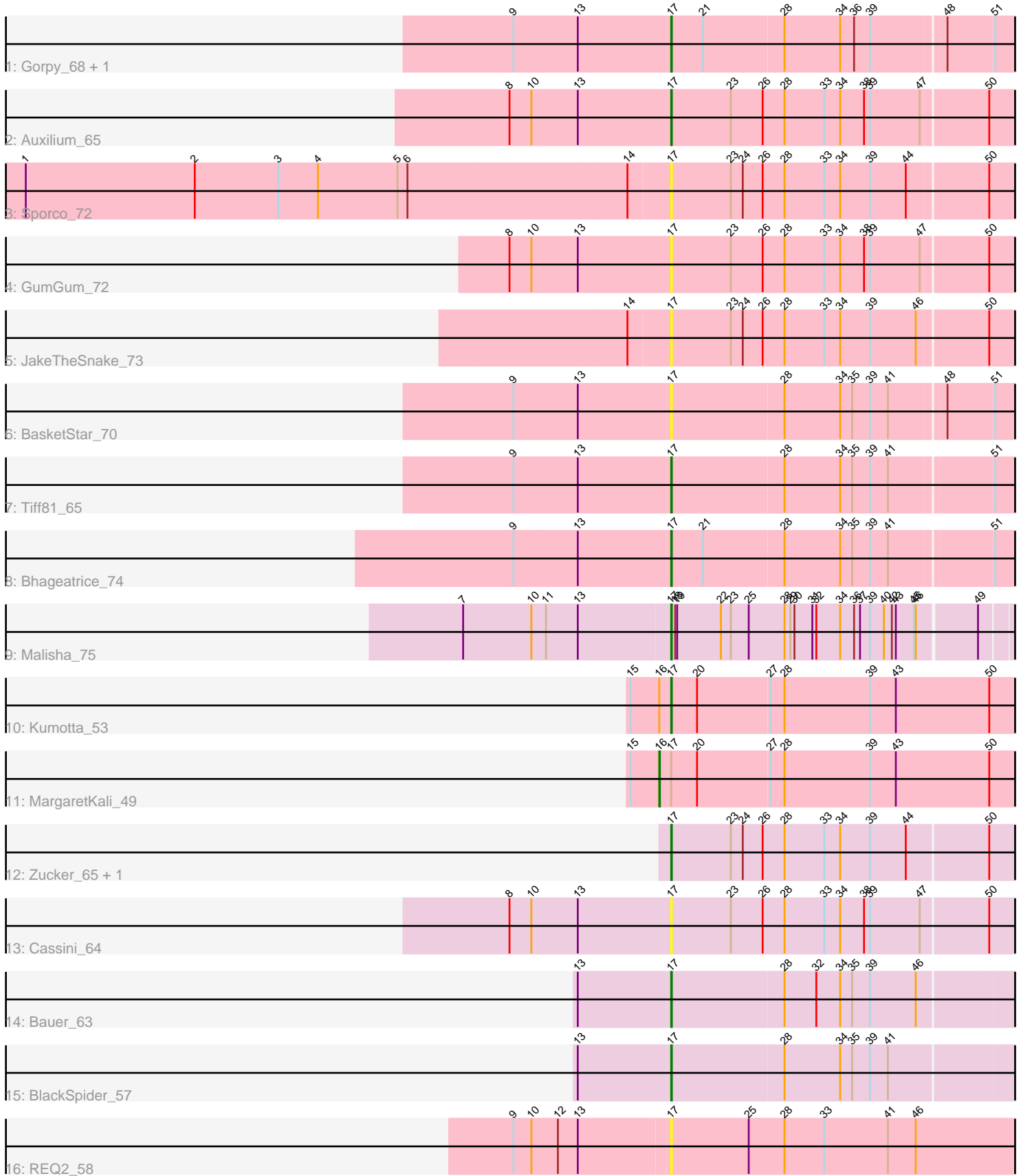


Pham 297018



Note: Tracks are now grouped by subcluster and scaled. Switching in subcluster is indicated by changes in track color. Track scale is now set by default to display the region 30 bp upstream of start 1 to 30 bp downstream of the last possible start. If this default region is judged to be packed too tightly with annotated starts, the track will be further scaled to only show that region of the ORF with annotated starts. This action will be indicated by adding "Zoomed" to the title. For starts, yellow indicates the location of called starts comprised solely of Glimmer/GeneMark auto-annotations, green indicates the location of called starts with at least 1 manual gene annotation.

Pham 297018 Report

This analysis was run 04/25/26 on database version 644.

Pham number 297018 has 18 members, 7 are drafts.

Phages represented in each track:

- Track 1 : Gorpy_68, Sakai_67
- Track 2 : Auxilium_65
- Track 3 : Sporco_72
- Track 4 : GumGum_72
- Track 5 : JakeTheSnake_73
- Track 6 : BasketStar_70
- Track 7 : Tiff81_65
- Track 8 : Bhageatrice_74
- Track 9 : Malisha_75
- Track 10 : Kumotta_53
- Track 11 : MargaretKali_49
- Track 12 : Zucker_65, NewKitty_72
- Track 13 : Cassini_64
- Track 14 : Bauer_63
- Track 15 : BlackSpider_57
- Track 16 : REQ2_58

Summary of Final Annotations (See graph section above for start numbers):

The start number called the most often in the published annotations is 17, it was called in 10 of the 11 non-draft genes in the pham.

Genes that call this "Most Annotated" start:

- Auxilium_65, BasketStar_70, Bauer_63, Bhageatrice_74, BlackSpider_57, Cassini_64, Gorpy_68, GumGum_72, JakeTheSnake_73, Kumotta_53, Malisha_75, NewKitty_72, REQ2_58, Sakai_67, Sporco_72, Tiff81_65, Zucker_65,

Genes that have the "Most Annotated" start but do not call it:

- MargaretKali_49,

Genes that do not have the "Most Annotated" start:

-

Summary by start number:

Start 16:

- Found in 2 of 18 (11.1%) of genes in pham
- Manual Annotations of this start: 1 of 11
- Called 50.0% of time when present
- Phage (with cluster) where this start called: MargaretKali_49 (FB),

Start 17:

- Found in 18 of 18 (100.0%) of genes in pham
- Manual Annotations of this start: 10 of 11
- Called 94.4% of time when present
- Phage (with cluster) where this start called: Auxilium_65 (AY), BasketStar_70 (AY), Bauer_63 (FN), Bhageatrice_74 (AY), BlackSpider_57 (FN), Cassini_64 (FN), Gorpy_68 (AY), GumGum_72 (AY), JakeTheSnake_73 (AY), Kumotta_53 (FB), Malisha_75 (DN), NewKitty_72 (AY), REQ2_58 (singleton), Sakai_67 (AY), Sporco_72 (AY), Tiff81_65 (AY), Zucker_65 (FN),

Summary by clusters:

There are 5 clusters represented in this pham: AY, DN, FB, singleton, FN,

Info for manual annotations of cluster AY:

- Start number 17 was manually annotated 5 times for cluster AY.

Info for manual annotations of cluster DN:

- Start number 17 was manually annotated 1 time for cluster DN.

Info for manual annotations of cluster FB:

- Start number 16 was manually annotated 1 time for cluster FB.
- Start number 17 was manually annotated 1 time for cluster FB.

Info for manual annotations of cluster FN:

- Start number 17 was manually annotated 3 times for cluster FN.

Gene Information:

Gene: Auxilium_65 Start: 34126, Stop: 34722, Start Num: 17

Candidate Starts for Auxilium_65:

(8, 33883), (10, 33916), (13, 33985), (Start: 17 @34126 has 10 MA's), (23, 34216), (26, 34264), (28, 34297), (33, 34357), (34, 34381), (38, 34417), (39, 34426), (47, 34501), (50, 34597),

Gene: BasketStar_70 Start: 37166, Stop: 37711, Start Num: 17

Candidate Starts for BasketStar_70:

(9, 36932), (13, 37028), (Start: 17 @37166 has 10 MA's), (28, 37334), (34, 37418), (35, 37436), (39, 37463), (41, 37490), (48, 37568), (51, 37637),

Gene: Bauer_63 Start: 34908, Stop: 35459, Start Num: 17

Candidate Starts for Bauer_63:

(13, 34770), (Start: 17 @34908 has 10 MA's), (28, 35076), (32, 35124), (34, 35160), (35, 35178), (39, 35205), (46, 35274),

Gene: Bhageatrice_74 Start: 39430, Stop: 39975, Start Num: 17

Candidate Starts for Bhageatrice_74:

(9, 39196), (13, 39292), (Start: 17 @39430 has 10 MA's), (21, 39478), (28, 39598), (34, 39682), (35, 39700), (39, 39727), (41, 39754), (51, 39901),

Gene: BlackSpider_57 Start: 33768, Stop: 34319, Start Num: 17

Candidate Starts for BlackSpider_57:

(13, 33630), (Start: 17 @33768 has 10 MA's), (28, 33936), (34, 34020), (35, 34038), (39, 34065), (41, 34092),

Gene: Cassini_64 Start: 35759, Stop: 36355, Start Num: 17

Candidate Starts for Cassini_64:

(8, 35516), (10, 35549), (13, 35618), (Start: 17 @35759 has 10 MA's), (23, 35849), (26, 35897), (28, 35930), (33, 35990), (34, 36014), (38, 36050), (39, 36059), (47, 36134), (50, 36230),

Gene: Gorpy_68 Start: 37238, Stop: 37783, Start Num: 17

Candidate Starts for Gorpy_68:

(9, 37004), (13, 37100), (Start: 17 @37238 has 10 MA's), (21, 37286), (28, 37406), (34, 37490), (36, 37511), (39, 37535), (48, 37640), (51, 37709),

Gene: GumGum_72 Start: 36855, Stop: 37451, Start Num: 17

Candidate Starts for GumGum_72:

(8, 36612), (10, 36645), (13, 36714), (Start: 17 @36855 has 10 MA's), (23, 36945), (26, 36993), (28, 37026), (33, 37086), (34, 37110), (38, 37146), (39, 37155), (47, 37230), (50, 37326),

Gene: JakeTheSnake_73 Start: 38801, Stop: 39397, Start Num: 17

Candidate Starts for JakeTheSnake_73:

(14, 38738), (Start: 17 @38801 has 10 MA's), (23, 38891), (24, 38909), (26, 38939), (28, 38972), (33, 39032), (34, 39056), (39, 39101), (46, 39170), (50, 39272),

Gene: Kumotta_53 Start: 31213, Stop: 31815, Start Num: 17

Candidate Starts for Kumotta_53:

(15, 31156), (Start: 16 @31198 has 1 MA's), (Start: 17 @31213 has 10 MA's), (20, 31252), (27, 31360), (28, 31381), (39, 31510), (43, 31549), (50, 31690),

Gene: Malisha_75 Start: 46665, Stop: 47252, Start Num: 17

Candidate Starts for Malisha_75:

(7, 46359), (10, 46461), (11, 46482), (13, 46530), (Start: 17 @46665 has 10 MA's), (18, 46671), (19, 46674), (22, 46740), (23, 46755), (25, 46782), (28, 46836), (29, 46845), (30, 46851), (31, 46878), (32, 46884), (34, 46920), (36, 46941), (37, 46950), (39, 46965), (40, 46986), (42, 46998), (43, 47004), (45, 47031), (46, 47034), (49, 47118),

Gene: MargaretKali_49 Start: 29816, Stop: 30433, Start Num: 16

Candidate Starts for MargaretKali_49:

(15, 29774), (Start: 16 @29816 has 1 MA's), (Start: 17 @29831 has 10 MA's), (20, 29870), (27, 29978), (28, 29999), (39, 30128), (43, 30167), (50, 30308),

Gene: NewKitty_72 Start: 37213, Stop: 37809, Start Num: 17

Candidate Starts for NewKitty_72:

(Start: 17 @37213 has 10 MA's), (23, 37303), (24, 37321), (26, 37351), (28, 37384), (33, 37444), (34, 37468), (39, 37513), (44, 37567), (50, 37684),

Gene: REQ2_58 Start: 39206, Stop: 39829, Start Num: 17

Candidate Starts for REQ2_58:

(9, 38975), (10, 39002), (12, 39041), (13, 39071), (Start: 17 @39206 has 10 MA's), (25, 39323), (28, 39377), (33, 39437), (41, 39533), (46, 39575),

Gene: Sakai_67 Start: 35949, Stop: 36494, Start Num: 17

Candidate Starts for Sakai_67:

(9, 35715), (13, 35811), (Start: 17 @35949 has 10 MA's), (21, 35997), (28, 36117), (34, 36201), (36, 36222), (39, 36246), (48, 36351), (51, 36420),

Gene: Sporco_72 Start: 37680, Stop: 38276, Start Num: 17

Candidate Starts for Sporco_72:

(1, 36714), (2, 36969), (3, 37095), (4, 37155), (5, 37275), (6, 37290), (14, 37617), (Start: 17 @37680 has 10 MA's), (23, 37770), (24, 37788), (26, 37818), (28, 37851), (33, 37911), (34, 37935), (39, 37980), (44, 38034), (50, 38151),

Gene: Tiff81_65 Start: 34896, Stop: 35441, Start Num: 17

Candidate Starts for Tiff81_65:

(9, 34662), (13, 34758), (Start: 17 @34896 has 10 MA's), (28, 35064), (34, 35148), (35, 35166), (39, 35193), (41, 35220), (51, 35367),

Gene: Zucker_65 Start: 37002, Stop: 37598, Start Num: 17

Candidate Starts for Zucker_65:

(Start: 17 @37002 has 10 MA's), (23, 37092), (24, 37110), (26, 37140), (28, 37173), (33, 37233), (34, 37257), (39, 37302), (44, 37356), (50, 37473),