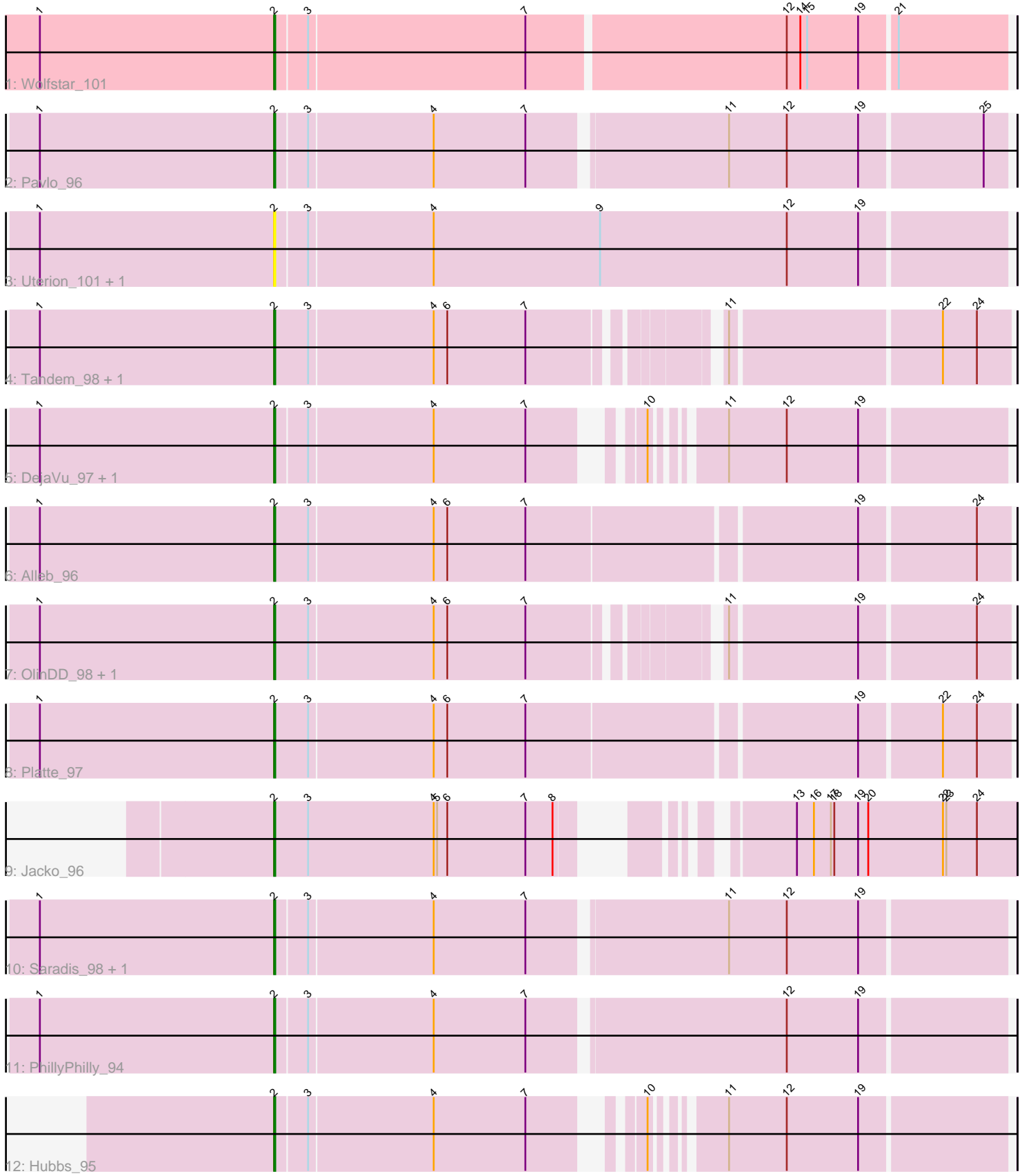


Pham 297025



Note: Tracks are now grouped by subcluster and scaled. Switching in subcluster is indicated by changes in track color. Track scale is now set by default to display the region 30 bp upstream of start 1 to 30 bp downstream of the last possible start. If this default region is judged to be packed too tightly with annotated starts, the track will be further scaled to only show that region of the ORF with annotated starts. This action will be indicated by adding "Zoomed" to the title. For starts, yellow indicates the location of called starts comprised solely of Glimmer/GeneMark auto-annotations, green indicates the location of called starts with at least 1 manual gene annotation.

Pham 297025 Report

This analysis was run 04/25/26 on database version 644.

WARNING: Pham size does not match number of genes in report. Either unphamerated genes have been added (by you) or starterator has removed genes due to invalid start codon.

Pham number 297025 has 17 members, 3 are drafts.

Phages represented in each track:

- Track 1 : Wolfstar_101
- Track 2 : Pavlo_96
- Track 3 : Uterion_101, Solimine_98
- Track 4 : Tandem_98, Pioneer3_98
- Track 5 : DejaVu_97, Lupine_96
- Track 6 : Alleb_96
- Track 7 : OlinDD_98, Hortus1_98
- Track 8 : Platte_97
- Track 9 : Jacko_96
- Track 10 : Saradis_98, Roman_98
- Track 11 : PhillyPhilly_94
- Track 12 : Hubbs_95

Summary of Final Annotations (See graph section above for start numbers):

The start number called the most often in the published annotations is 2, it was called in 14 of the 14 non-draft genes in the pham.

Genes that call this "Most Annotated" start:

- Alleb_96, DejaVu_97, Hortus1_98, Hubbs_95, Jacko_96, Lupine_96, OlinDD_98, Pavlo_96, PhillyPhilly_94, Pioneer3_98, Platte_97, Roman_98, Saradis_98, Solimine_98, Tandem_98, Uterion_101, Wolfstar_101,

Genes that have the "Most Annotated" start but do not call it:

-

Genes that do not have the "Most Annotated" start:

-

Summary by start number:

Start 2:

- Found in 17 of 17 (100.0%) of genes in pham
- Manual Annotations of this start: 14 of 14
- Called 100.0% of time when present
- Phage (with cluster) where this start called: Alleb_96 (ED1), DejaVu_97 (ED1), Hortus1_98 (ED1), Hubbs_95 (ED1), Jacko_96 (ED1), Lupine_96 (ED1), OlinDD_98 (ED1), Pavlo_96 (ED1), PhillyPhilly_94 (ED1), Pioneer3_98 (ED1), Platte_97 (ED1), Roman_98 (ED1), Saradis_98 (ED1), Solimine_98 (ED1), Tandem_98 (ED1), Uterion_101 (ED1), Wolfstar_101 (ED),

Summary by clusters:

There are 2 clusters represented in this pham: ED, ED1,

Info for manual annotations of cluster ED:

- Start number 2 was manually annotated 1 time for cluster ED.

Info for manual annotations of cluster ED1:

- Start number 2 was manually annotated 13 times for cluster ED1.

Gene Information:

Gene: Alleb_96 Start: 54715, Stop: 54089, Start Num: 2

Candidate Starts for Alleb_96:

(1, 54922), (Start: 2 @54715 has 14 MA's), (3, 54685), (4, 54577), (6, 54565), (7, 54496), (19, 54217), (24, 54118),

Gene: DejaVu_97 Start: 53875, Stop: 53306, Start Num: 2

Candidate Starts for DejaVu_97:

(1, 54082), (Start: 2 @53875 has 14 MA's), (3, 53848), (4, 53740), (7, 53659), (10, 53590), (11, 53545), (12, 53494), (19, 53431),

Gene: Hortus1_98 Start: 55260, Stop: 54664, Start Num: 2

Candidate Starts for Hortus1_98:

(1, 55467), (Start: 2 @55260 has 14 MA's), (3, 55230), (4, 55122), (6, 55110), (7, 55041), (11, 54900), (19, 54792), (24, 54693),

Gene: Hubbs_95 Start: 53921, Stop: 53352, Start Num: 2

Candidate Starts for Hubbs_95:

(Start: 2 @53921 has 14 MA's), (3, 53894), (4, 53786), (7, 53705), (10, 53636), (11, 53591), (12, 53540), (19, 53477),

Gene: Jacko_96 Start: 53144, Stop: 52578, Start Num: 2

Candidate Starts for Jacko_96:

(Start: 2 @53144 has 14 MA's), (3, 53114), (4, 53003), (5, 53000), (6, 52991), (7, 52922), (8, 52898), (13, 52772), (16, 52757), (17, 52742), (18, 52739), (19, 52718), (20, 52709), (22, 52643), (23, 52640), (24, 52613),

Gene: Lupine_96 Start: 53934, Stop: 53365, Start Num: 2

Candidate Starts for Lupine_96:

(1, 54141), (Start: 2 @53934 has 14 MA's), (3, 53907), (4, 53799), (7, 53718), (10, 53649), (11, 53604), (12, 53553), (19, 53490),

Gene: OlinDD_98 Start: 55265, Stop: 54669, Start Num: 2

Candidate Starts for OlinDD_98:

(1, 55472), (Start: 2 @55265 has 14 MA's), (3, 55235), (4, 55127), (6, 55115), (7, 55046), (11, 54905), (19, 54797), (24, 54698),

Gene: Pavlo_96 Start: 54070, Stop: 53450, Start Num: 2

Candidate Starts for Pavlo_96:

(1, 54277), (Start: 2 @54070 has 14 MA's), (3, 54043), (4, 53935), (7, 53854), (11, 53689), (12, 53638), (19, 53575), (25, 53470),

Gene: PhillyPhilly_94 Start: 53535, Stop: 52915, Start Num: 2

Candidate Starts for PhillyPhilly_94:

(1, 53742), (Start: 2 @53535 has 14 MA's), (3, 53508), (4, 53400), (7, 53319), (12, 53103), (19, 53040),

Gene: Pioneer3_98 Start: 55063, Stop: 54467, Start Num: 2

Candidate Starts for Pioneer3_98:

(1, 55270), (Start: 2 @55063 has 14 MA's), (3, 55033), (4, 54925), (6, 54913), (7, 54844), (11, 54703), (22, 54526), (24, 54496),

Gene: Platte_97 Start: 54862, Stop: 54236, Start Num: 2

Candidate Starts for Platte_97:

(1, 55069), (Start: 2 @54862 has 14 MA's), (3, 54832), (4, 54724), (6, 54712), (7, 54643), (19, 54364), (22, 54295), (24, 54265),

Gene: Roman_98 Start: 54586, Stop: 53966, Start Num: 2

Candidate Starts for Roman_98:

(1, 54793), (Start: 2 @54586 has 14 MA's), (3, 54559), (4, 54451), (7, 54370), (11, 54205), (12, 54154), (19, 54091),

Gene: Saradis_98 Start: 53547, Stop: 52927, Start Num: 2

Candidate Starts for Saradis_98:

(1, 53754), (Start: 2 @53547 has 14 MA's), (3, 53520), (4, 53412), (7, 53331), (11, 53166), (12, 53115), (19, 53052),

Gene: Solimine_98 Start: 54458, Stop: 53823, Start Num: 2

Candidate Starts for Solimine_98:

(1, 54665), (Start: 2 @54458 has 14 MA's), (3, 54431), (4, 54323), (9, 54176), (12, 54011), (19, 53948),

Gene: Tandem_98 Start: 55143, Stop: 54547, Start Num: 2

Candidate Starts for Tandem_98:

(1, 55350), (Start: 2 @55143 has 14 MA's), (3, 55113), (4, 55005), (6, 54993), (7, 54924), (11, 54783), (22, 54606), (24, 54576),

Gene: Uterion_101 Start: 53974, Stop: 53339, Start Num: 2

Candidate Starts for Uterion_101:

(1, 54181), (Start: 2 @53974 has 14 MA's), (3, 53947), (4, 53839), (9, 53692), (12, 53527), (19, 53464),

Gene: Wolfstar_101 Start: 55980, Stop: 55354, Start Num: 2

Candidate Starts for Wolfstar_101:

(1, 56187), (Start: 2 @55980 has 14 MA's), (3, 55953), (7, 55764), (12, 55542), (14, 55530), (15, 55524), (19, 55479), (21, 55449),