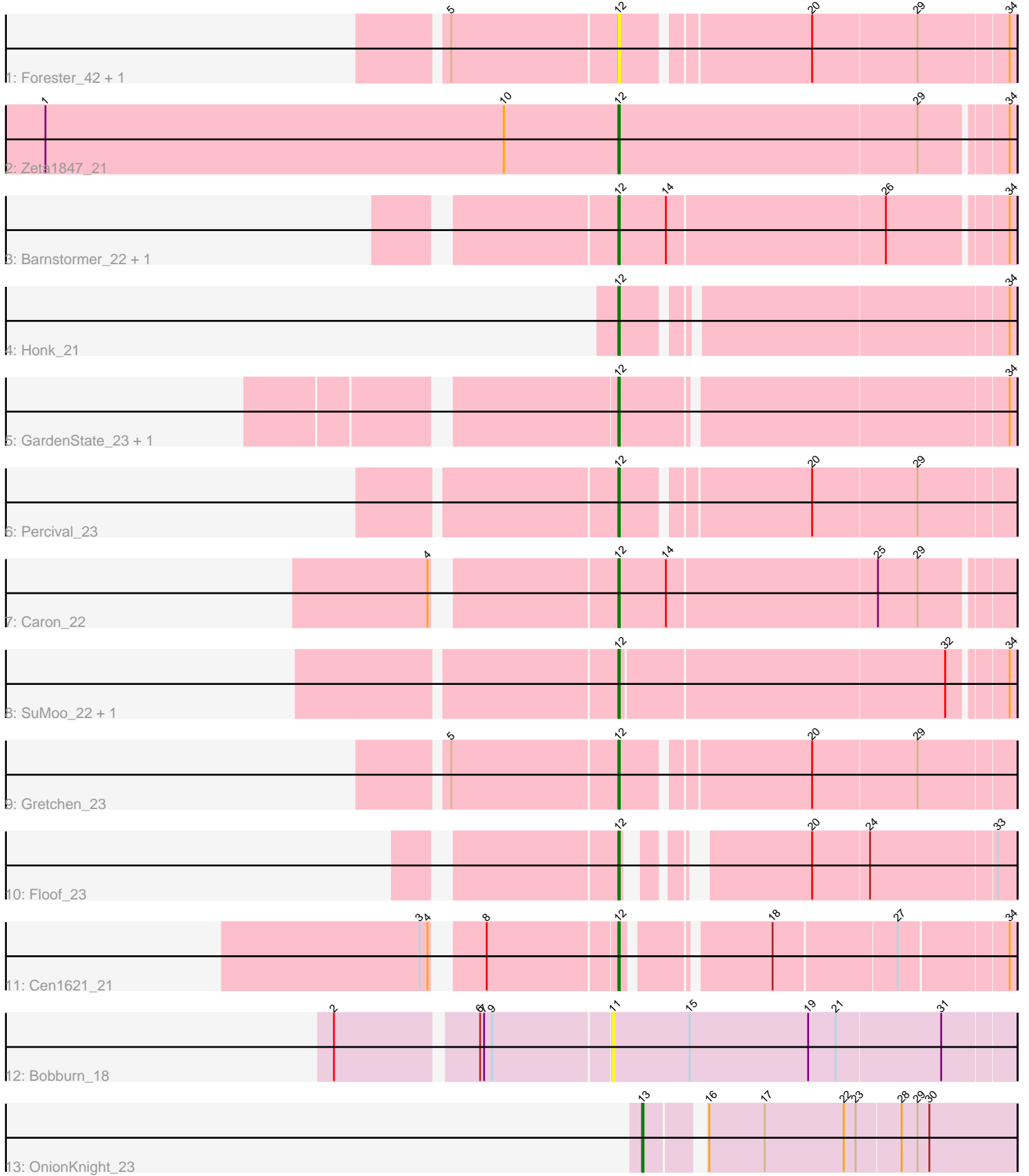


Pham 297027



Note: Tracks are now grouped by subcluster and scaled. Switching in subcluster is indicated by changes in track color. Track scale is now set by default to display the region 30 bp upstream of start 1 to 30 bp downstream of the last possible start. If this default region is judged to be packed too tightly with annotated starts, the track will be further scaled to only show that region of the ORF with annotated starts. This action will be indicated by adding "Zoomed" to the title. For starts, yellow indicates the location of called starts comprised solely of Glimmer/GeneMark auto-annotations, green indicates the location of called starts with at least 1 manual gene annotation.

Pham 297027 Report

This analysis was run 04/25/26 on database version 644.

Pham number 297027 has 17 members, 3 are drafts.

Phages represented in each track:

- Track 1 : Forester_42, SuperHands_24
- Track 2 : Zeta1847_21
- Track 3 : Barnstormer_22, UtzChips_22
- Track 4 : Honk_21
- Track 5 : GardenState_23, IAmGroot_23
- Track 6 : Percival_23
- Track 7 : Caron_22
- Track 8 : SuMoo_22, Mabodamaca_23
- Track 9 : Gretchen_23
- Track 10 : Floof_23
- Track 11 : Cen1621_21
- Track 12 : Bobburn_18
- Track 13 : OnionKnight_23

Summary of Final Annotations (See graph section above for start numbers):

The start number called the most often in the published annotations is 12, it was called in 13 of the 14 non-draft genes in the pham.

Genes that call this "Most Annotated" start:

- Barnstormer_22, Caron_22, Cen1621_21, Floof_23, Forester_42, GardenState_23, Gretchen_23, Honk_21, IAmGroot_23, Mabodamaca_23, Percival_23, SuMoo_22, SuperHands_24, UtzChips_22, Zeta1847_21,

Genes that have the "Most Annotated" start but do not call it:

-

Genes that do not have the "Most Annotated" start:

- Bobburn_18, OnionKnight_23,

Summary by start number:

Start 11:

- Found in 1 of 17 (5.9%) of genes in pham

- No Manual Annotations of this start.
- Called 100.0% of time when present
- Phage (with cluster) where this start called: Bobburn_18 (singleton),

Start 12:

- Found in 15 of 17 (88.2%) of genes in pham
- Manual Annotations of this start: 13 of 14
- Called 100.0% of time when present
- Phage (with cluster) where this start called: Barnstormer_22 (EH), Caron_22 (EH), Cen1621_21 (EH), Floof_23 (EH), Forester_42 (EH), GardenState_23 (EH), Gretchen_23 (EH), Honk_21 (EH), IAmGroot_23 (EH), Mabodamaca_23 (EH), Percival_23 (EH), SuMoo_22 (EH), SuperHands_24 (EH), UtzChips_22 (EH), Zeta1847_21 (EH),

Start 13:

- Found in 1 of 17 (5.9%) of genes in pham
- Manual Annotations of this start: 1 of 14
- Called 100.0% of time when present
- Phage (with cluster) where this start called: OnionKnight_23 (singleton),

Summary by clusters:

There are 2 clusters represented in this pham: singleton, EH,

Info for manual annotations of cluster EH:

- Start number 12 was manually annotated 13 times for cluster EH.

Gene Information:

Gene: Barnstormer_22 Start: 18840, Stop: 19127, Start Num: 12

Candidate Starts for Barnstormer_22:

(Start: 12 @18840 has 13 MA's), (14, 18876), (26, 19038), (34, 19122),

Gene: Bobburn_18 Start: 13648, Stop: 13947, Start Num: 11

Candidate Starts for Bobburn_18:

(2, 13453), (6, 13552), (7, 13555), (9, 13561), (11, 13648), (15, 13705), (19, 13795), (21, 13816), (31, 13894),

Gene: Caron_22 Start: 18225, Stop: 18512, Start Num: 12

Candidate Starts for Caron_22:

(4, 18102), (Start: 12 @18225 has 13 MA's), (14, 18261), (25, 18417), (29, 18447),

Gene: Cen1621_21 Start: 17291, Stop: 17560, Start Num: 12

Candidate Starts for Cen1621_21:

(3, 17165), (4, 17171), (8, 17198), (Start: 12 @17291 has 13 MA's), (18, 17387), (27, 17477), (34, 17555),

Gene: Floof_23 Start: 18951, Stop: 19205, Start Num: 12

Candidate Starts for Floof_23:

(Start: 12 @18951 has 13 MA's), (20, 19056), (24, 19098), (33, 19191),

Gene: Forester_42 Start: 20702, Stop: 20983, Start Num: 12
Candidate Starts for Forester_42:
(5, 20579), (Start: 12 @20702 has 13 MA's), (20, 20834), (29, 20912), (34, 20978),

Gene: GardenState_23 Start: 19313, Stop: 19597, Start Num: 12
Candidate Starts for GardenState_23:
(Start: 12 @19313 has 13 MA's), (34, 19592),

Gene: Gretchen_23 Start: 19981, Stop: 20262, Start Num: 12
Candidate Starts for Gretchen_23:
(5, 19858), (Start: 12 @19981 has 13 MA's), (20, 20113), (29, 20191),

Gene: Honk_21 Start: 17157, Stop: 17432, Start Num: 12
Candidate Starts for Honk_21:
(Start: 12 @17157 has 13 MA's), (34, 17427),

Gene: IAmGroot_23 Start: 19974, Stop: 20258, Start Num: 12
Candidate Starts for IAmGroot_23:
(Start: 12 @19974 has 13 MA's), (34, 20253),

Gene: Mabodamaca_23 Start: 19124, Stop: 19408, Start Num: 12
Candidate Starts for Mabodamaca_23:
(Start: 12 @19124 has 13 MA's), (32, 19364), (34, 19403),

Gene: OnionKnight_23 Start: 18605, Stop: 18871, Start Num: 13
Candidate Starts for OnionKnight_23:
(Start: 13 @18605 has 1 MA's), (16, 18641), (17, 18683), (22, 18743), (23, 18752), (28, 18785), (29, 18797), (30, 18806),

Gene: Percival_23 Start: 19815, Stop: 20096, Start Num: 12
Candidate Starts for Percival_23:
(Start: 12 @19815 has 13 MA's), (20, 19947), (29, 20025),

Gene: SuMoo_22 Start: 18079, Stop: 18363, Start Num: 12
Candidate Starts for SuMoo_22:
(Start: 12 @18079 has 13 MA's), (32, 18319), (34, 18358),

Gene: SuperHands_24 Start: 20712, Stop: 20993, Start Num: 12
Candidate Starts for SuperHands_24:
(5, 20589), (Start: 12 @20712 has 13 MA's), (20, 20844), (29, 20922), (34, 20988),

Gene: UtzChips_22 Start: 18828, Stop: 19115, Start Num: 12
Candidate Starts for UtzChips_22:
(Start: 12 @18828 has 13 MA's), (14, 18864), (26, 19026), (34, 19110),

Gene: Zeta1847_21 Start: 18934, Stop: 19224, Start Num: 12
Candidate Starts for Zeta1847_21:
(1, 18499), (10, 18847), (Start: 12 @18934 has 13 MA's), (29, 19159), (34, 19219),