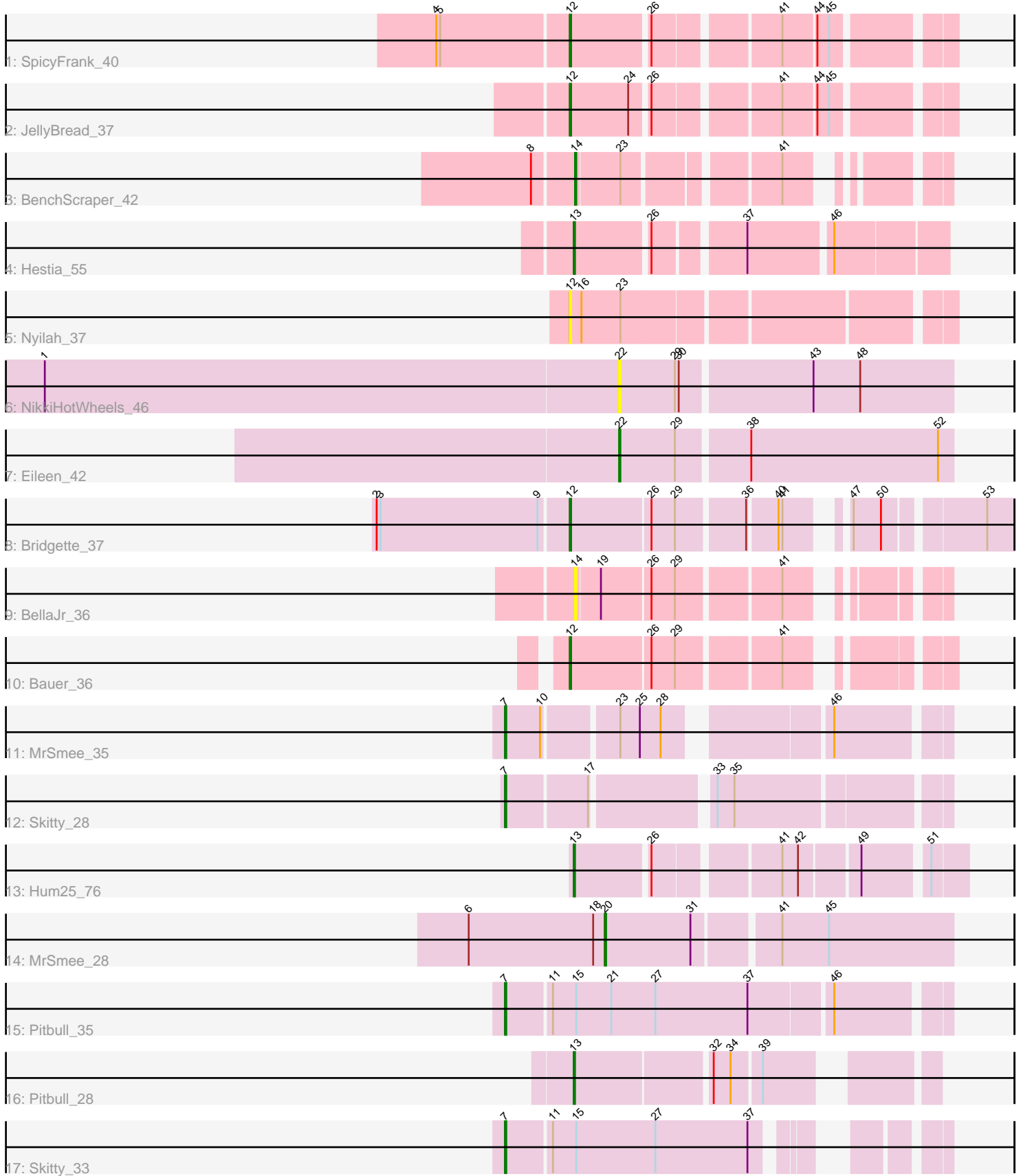


Pham 297031



Note: Tracks are now grouped by subcluster and scaled. Switching in subcluster is indicated by changes in track color. Track scale is now set by default to display the region 30 bp upstream of start 1 to 30 bp downstream of the last possible start. If this default region is judged to be packed too tightly with annotated starts, the track will be further scaled to only show that region of the ORF with annotated starts. This action will be indicated by adding "Zoomed" to the title. For starts, yellow indicates the location of called starts comprised solely of Glimmer/GeneMark auto-annotations, green indicates the location of called starts with at least 1 manual gene annotation.

Pham 297031 Report

This analysis was run 04/25/26 on database version 644.

Pham number 297031 has 17 members, 3 are drafts.

Phages represented in each track:

- Track 1 : SpicyFrank_40
- Track 2 : JellyBread_37
- Track 3 : BenchScraper_42
- Track 4 : Hestia_55
- Track 5 : Nyilah_37
- Track 6 : NikkiHotWheels_46
- Track 7 : Eileen_42
- Track 8 : Bridgette_37
- Track 9 : BellaJr_36
- Track 10 : Bauer_36
- Track 11 : MrSmee_35
- Track 12 : Skitty_28
- Track 13 : Hum25_76
- Track 14 : MrSmee_28
- Track 15 : Pitbull_35
- Track 16 : Pitbull_28
- Track 17 : Skitty_33

Summary of Final Annotations (See graph section above for start numbers):

The start number called the most often in the published annotations is 7, it was called in 4 of the 14 non-draft genes in the pham.

Genes that call this "Most Annotated" start:

- MrSmee_35, Pitbull_35, Skitty_28, Skitty_33,

Genes that have the "Most Annotated" start but do not call it:

-

Genes that do not have the "Most Annotated" start:

- Bauer_36, BellaJr_36, BenchScraper_42, Bridgette_37, Eileen_42, Hestia_55, Hum25_76, JellyBread_37, MrSmee_28, NikkiHotWheels_46, Nyilah_37, Pitbull_28, SpicyFrank_40,

Summary by start number:

Start 7:

- Found in 4 of 17 (23.5%) of genes in pham
- Manual Annotations of this start: 4 of 14
- Called 100.0% of time when present
- Phage (with cluster) where this start called: MrSmee_35 (FQ), Pitbull_35 (FQ), Skitty_28 (FQ), Skitty_33 (FQ),

Start 12:

- Found in 5 of 17 (29.4%) of genes in pham
- Manual Annotations of this start: 4 of 14
- Called 100.0% of time when present
- Phage (with cluster) where this start called: Bauer_36 (FN), Bridgette_37 (FA), JellyBread_37 (AY), Nyilah_37 (AY), SpicyFrank_40 (AY),

Start 13:

- Found in 3 of 17 (17.6%) of genes in pham
- Manual Annotations of this start: 3 of 14
- Called 100.0% of time when present
- Phage (with cluster) where this start called: Hestia_55 (AY), Hum25_76 (FQ), Pitbull_28 (FQ),

Start 14:

- Found in 2 of 17 (11.8%) of genes in pham
- Manual Annotations of this start: 1 of 14
- Called 100.0% of time when present
- Phage (with cluster) where this start called: BellaJr_36 (FN), BenchScraper_42 (AY),

Start 20:

- Found in 1 of 17 (5.9%) of genes in pham
- Manual Annotations of this start: 1 of 14
- Called 100.0% of time when present
- Phage (with cluster) where this start called: MrSmee_28 (FQ),

Start 22:

- Found in 2 of 17 (11.8%) of genes in pham
- Manual Annotations of this start: 1 of 14
- Called 100.0% of time when present
- Phage (with cluster) where this start called: Eileen_42 (FA), NikkiHotWheels_46 (FA),

Summary by clusters:

There are 4 clusters represented in this pham: AY, FQ, FN, FA,

Info for manual annotations of cluster AY:

- Start number 12 was manually annotated 2 times for cluster AY.
- Start number 13 was manually annotated 1 time for cluster AY.
- Start number 14 was manually annotated 1 time for cluster AY.

Info for manual annotations of cluster FA:

- Start number 12 was manually annotated 1 time for cluster FA.

- Start number 22 was manually annotated 1 time for cluster FA.

Info for manual annotations of cluster FN:

- Start number 12 was manually annotated 1 time for cluster FN.

Info for manual annotations of cluster FQ:

- Start number 7 was manually annotated 4 times for cluster FQ.
- Start number 13 was manually annotated 2 times for cluster FQ.
- Start number 20 was manually annotated 1 time for cluster FQ.

Gene Information:

Gene: Bauer_36 Start: 26236, Stop: 26484, Start Num: 12

Candidate Starts for Bauer_36:

(Start: 12 @26236 has 4 MA's), (26, 26296), (29, 26314), (41, 26386),

Gene: BellaJr_36 Start: 27299, Stop: 27532, Start Num: 14

Candidate Starts for BellaJr_36:

(Start: 14 @27299 has 1 MA's), (19, 27317), (26, 27353), (29, 27371), (41, 27443),

Gene: BenchScraper_42 Start: 27914, Stop: 27690, Start Num: 14

Candidate Starts for BenchScraper_42:

(8, 27944), (Start: 14 @27914 has 1 MA's), (23, 27881), (41, 27779),

Gene: Bridgette_37 Start: 26378, Stop: 26668, Start Num: 12

Candidate Starts for Bridgette_37:

(2, 26234), (3, 26237), (9, 26357), (Start: 12 @26378 has 4 MA's), (26, 26438), (29, 26456), (36, 26504), (40, 26525), (41, 26528), (47, 26558), (50, 26579), (53, 26648),

Gene: Eileen_42 Start: 28759, Stop: 29007, Start Num: 22

Candidate Starts for Eileen_42:

(Start: 22 @28759 has 1 MA's), (29, 28801), (38, 28852), (52, 28996),

Gene: Hestia_55 Start: 31927, Stop: 32184, Start Num: 13

Candidate Starts for Hestia_55:

(Start: 13 @31927 has 3 MA's), (26, 31981), (37, 32041), (46, 32101),

Gene: Hum25_76 Start: 39195, Stop: 39458, Start Num: 13

Candidate Starts for Hum25_76:

(Start: 13 @39195 has 3 MA's), (26, 39249), (41, 39333), (42, 39345), (49, 39387), (51, 39432),

Gene: JellyBread_37 Start: 26498, Stop: 26244, Start Num: 12

Candidate Starts for JellyBread_37:

(Start: 12 @26498 has 4 MA's), (24, 26453), (26, 26441), (41, 26357), (44, 26333), (45, 26324),

Gene: MrSmee_35 Start: 26014, Stop: 25721, Start Num: 7

Candidate Starts for MrSmee_35:

(Start: 7 @26014 has 4 MA's), (10, 25987), (23, 25936), (25, 25921), (28, 25906), (46, 25801),

Gene: MrSmee_28 Start: 22939, Stop: 22682, Start Num: 20

Candidate Starts for MrSmee_28:

(6, 23044), (18, 22948), (Start: 20 @22939 has 1 MA's), (31, 22873), (41, 22813), (45, 22777),

Gene: NikkiHotWheels_46 Start: 29764, Stop: 30012, Start Num: 22

Candidate Starts for NikkiHotWheels_46:

(1, 29323), (Start: 22 @29764 has 1 MA's), (29, 29806), (30, 29809), (43, 29905), (48, 29941),

Gene: Nyilah_37 Start: 26243, Stop: 25974, Start Num: 12

Candidate Starts for Nyilah_37:

(Start: 12 @26243 has 4 MA's), (16, 26234), (23, 26204),

Gene: Pitbull_35 Start: 25095, Stop: 24775, Start Num: 7

Candidate Starts for Pitbull_35:

(Start: 7 @25095 has 4 MA's), (11, 25062), (15, 25044), (21, 25017), (27, 24984), (37, 24915), (46, 24855),

Gene: Pitbull_28 Start: 22251, Stop: 22015, Start Num: 13

Candidate Starts for Pitbull_28:

(Start: 13 @22251 has 3 MA's), (32, 22152), (34, 22140), (39, 22119),

Gene: Skitty_28 Start: 22362, Stop: 22060, Start Num: 7

Candidate Starts for Skitty_28:

(Start: 7 @22362 has 4 MA's), (17, 22302), (33, 22221), (35, 22209),

Gene: Skitty_33 Start: 24641, Stop: 24363, Start Num: 7

Candidate Starts for Skitty_33:

(Start: 7 @24641 has 4 MA's), (11, 24608), (15, 24590), (27, 24530), (37, 24461),

Gene: SpicyFrank_40 Start: 27728, Stop: 27474, Start Num: 12

Candidate Starts for SpicyFrank_40:

(4, 27827), (5, 27824), (Start: 12 @27728 has 4 MA's), (26, 27671), (41, 27587), (44, 27563), (45, 27554),