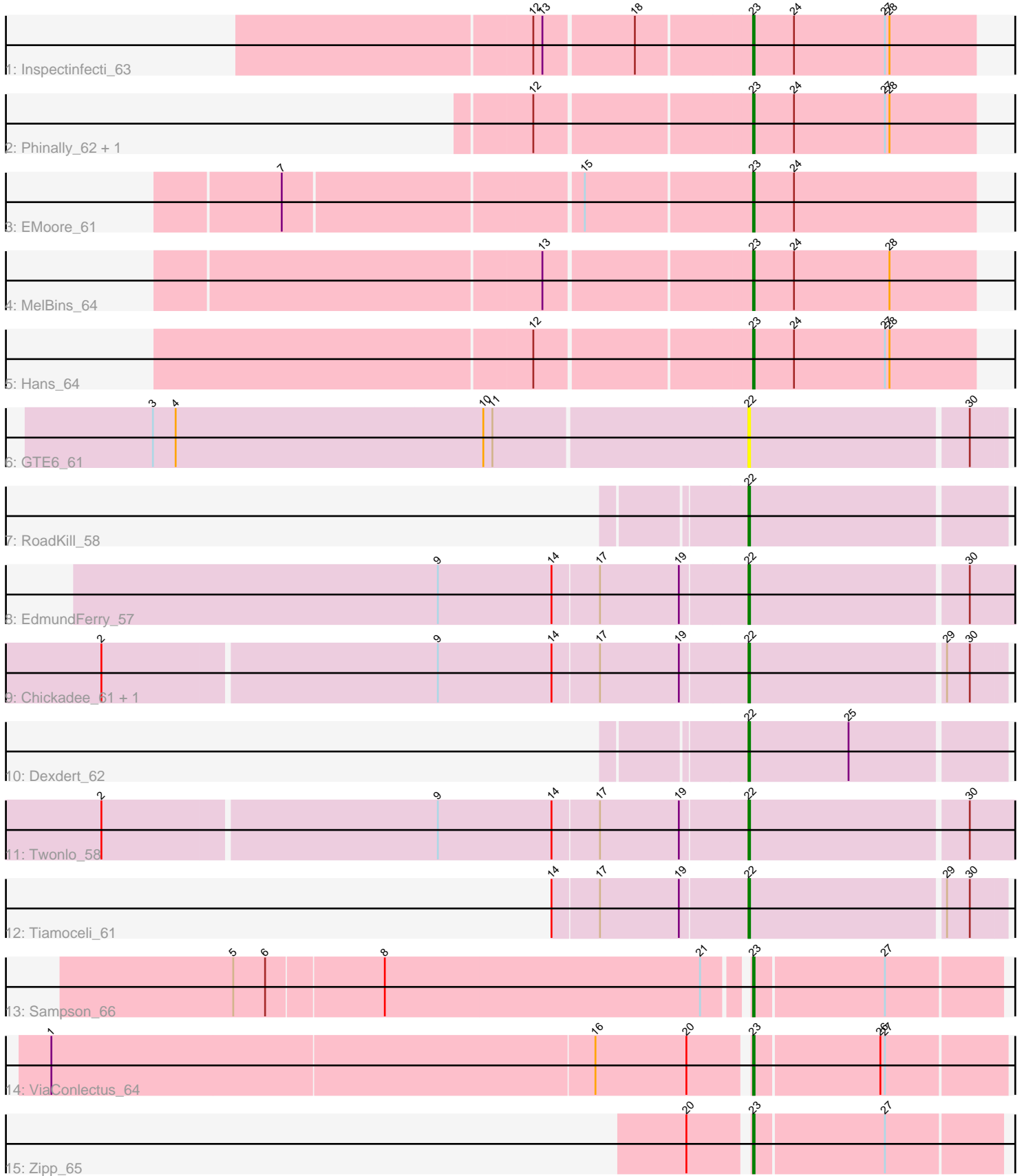


Pham 297033



Note: Tracks are now grouped by subcluster and scaled. Switching in subcluster is indicated by changes in track color. Track scale is now set by default to display the region 30 bp upstream of start 1 to 30 bp downstream of the last possible start. If this default region is judged to be packed too tightly with annotated starts, the track will be further scaled to only show that region of the ORF with annotated starts. This action will be indicated by adding "Zoomed" to the title. For starts, yellow indicates the location of called starts comprised solely of Glimmer/GeneMark auto-annotations, green indicates the location of called starts with at least 1 manual gene annotation.

## Pham 297033 Report

This analysis was run 04/25/26 on database version 644.

Pham number 297033 has 17 members, 1 are drafts.

Phages represented in each track:

- Track 1 : Inspectinfecti\_63
- Track 2 : Phinally\_62, Leonard\_62
- Track 3 : EMoore\_61
- Track 4 : MelBins\_64
- Track 5 : Hans\_64
- Track 6 : GTE6\_61
- Track 7 : RoadKill\_58
- Track 8 : EdmundFerry\_57
- Track 9 : Chickadee\_61, Kwekel\_61
- Track 10 : Dexdert\_62
- Track 11 : Twonlo\_58
- Track 12 : Tiamoceli\_61
- Track 13 : Sampson\_66
- Track 14 : ViaConlectus\_64
- Track 15 : Zipp\_65

### ***Summary of Final Annotations (See graph section above for start numbers):***

The start number called the most often in the published annotations is 23, it was called in 9 of the 16 non-draft genes in the pham.

Genes that call this "Most Annotated" start:

- EMoore\_61, Hans\_64, Inspectinfecti\_63, Leonard\_62, MelBins\_64, Phinally\_62, Sampson\_66, ViaConlectus\_64, Zipp\_65,

Genes that have the "Most Annotated" start but do not call it:

- 

Genes that do not have the "Most Annotated" start:

- Chickadee\_61, Dexdert\_62, EdmundFerry\_57, GTE6\_61, Kwekel\_61, RoadKill\_58, Tiamoceli\_61, Twonlo\_58,

### **Summary by start number:**

**Start 22:**

- Found in 8 of 17 ( 47.1% ) of genes in pham
- Manual Annotations of this start: 7 of 16
- Called 100.0% of time when present
- Phage (with cluster) where this start called: Chickadee\_61 (DE3), Dexdert\_62 (DE3), EdmundFerry\_57 (DE3), GTE6\_61 (DE3), Kwekel\_61 (DE3), RoadKill\_58 (DE3), Tiamoceli\_61 (DE3), Twonlo\_58 (DE3),

**Start 23:**

- Found in 9 of 17 ( 52.9% ) of genes in pham
- Manual Annotations of this start: 9 of 16
- Called 100.0% of time when present
- Phage (with cluster) where this start called: EMOore\_61 (DE2), Hans\_64 (DE2), Inspectinfecti\_63 (DE2), Leonard\_62 (DE2), MelBins\_64 (DE2), Phinally\_62 (DE2), Sampson\_66 (DE4), ViaConlectus\_64 (DE4), Zipp\_65 (DE4),

**Summary by clusters:**

There are 3 clusters represented in this pham: DE2, DE3, DE4,

Info for manual annotations of cluster DE2:

- Start number 23 was manually annotated 6 times for cluster DE2.

Info for manual annotations of cluster DE3:

- Start number 22 was manually annotated 7 times for cluster DE3.

Info for manual annotations of cluster DE4:

- Start number 23 was manually annotated 3 times for cluster DE4.

**Gene Information:**

Gene: Chickadee\_61 Start: 45582, Stop: 45746, Start Num: 22

Candidate Starts for Chickadee\_61:

(2, 45168), (9, 45384), (14, 45459), (17, 45489), (19, 45540), (Start: 22 @45582 has 7 MA's), (29, 45708), (30, 45723),

Gene: Dexdert\_62 Start: 45703, Stop: 45867, Start Num: 22

Candidate Starts for Dexdert\_62:

(Start: 22 @45703 has 7 MA's), (25, 45769),

Gene: EMOore\_61 Start: 49538, Stop: 49684, Start Num: 23

Candidate Starts for EMOore\_61:

(7, 49241), (15, 49430), (Start: 23 @49538 has 9 MA's), (24, 49565),

Gene: EdmundFerry\_57 Start: 44216, Stop: 44413, Start Num: 22

Candidate Starts for EdmundFerry\_57:

(9, 44018), (14, 44093), (17, 44123), (19, 44174), (Start: 22 @44216 has 7 MA's), (30, 44357),

Gene: GTE6\_61 Start: 46038, Stop: 46202, Start Num: 22

Candidate Starts for GTE6\_61:

(3, 45654), (4, 45669), (10, 45870), (11, 45876), (Start: 22 @46038 has 7 MA's), (30, 46179),

Gene: Hans\_64 Start: 48946, Stop: 49092, Start Num: 23

Candidate Starts for Hans\_64:

(12, 48811), (Start: 23 @48946 has 9 MA's), (24, 48973), (27, 49033), (28, 49036),

Gene: Inspectinfecti\_63 Start: 49056, Stop: 49202, Start Num: 23

Candidate Starts for Inspectinfecti\_63:

(12, 48921), (13, 48927), (18, 48984), (Start: 23 @49056 has 9 MA's), (24, 49083), (27, 49143), (28, 49146),

Gene: Kwekel\_61 Start: 45495, Stop: 45659, Start Num: 22

Candidate Starts for Kwekel\_61:

(2, 45081), (9, 45297), (14, 45372), (17, 45402), (19, 45453), (Start: 22 @45495 has 7 MA's), (29, 45621), (30, 45636),

Gene: Leonard\_62 Start: 49133, Stop: 49279, Start Num: 23

Candidate Starts for Leonard\_62:

(12, 48998), (Start: 23 @49133 has 9 MA's), (24, 49160), (27, 49220), (28, 49223),

Gene: MelBins\_64 Start: 49370, Stop: 49516, Start Num: 23

Candidate Starts for MelBins\_64:

(13, 49241), (Start: 23 @49370 has 9 MA's), (24, 49397), (28, 49460),

Gene: Phinally\_62 Start: 49130, Stop: 49276, Start Num: 23

Candidate Starts for Phinally\_62:

(12, 48995), (Start: 23 @49130 has 9 MA's), (24, 49157), (27, 49217), (28, 49220),

Gene: RoadKill\_58 Start: 44996, Stop: 45160, Start Num: 22

Candidate Starts for RoadKill\_58:

(Start: 22 @44996 has 7 MA's),

Gene: Sampson\_66 Start: 49655, Stop: 49813, Start Num: 23

Candidate Starts for Sampson\_66:

(5, 49328), (6, 49349), (8, 49424), (21, 49631), (Start: 23 @49655 has 9 MA's), (27, 49739),

Gene: Tiamoceli\_61 Start: 46470, Stop: 46634, Start Num: 22

Candidate Starts for Tiamoceli\_61:

(14, 46347), (17, 46377), (19, 46428), (Start: 22 @46470 has 7 MA's), (29, 46596), (30, 46611),

Gene: Twonlo\_58 Start: 44965, Stop: 45162, Start Num: 22

Candidate Starts for Twonlo\_58:

(2, 44551), (9, 44767), (14, 44842), (17, 44872), (19, 44923), (Start: 22 @44965 has 7 MA's), (30, 45106),

Gene: ViaConlectus\_64 Start: 48340, Stop: 48501, Start Num: 23

Candidate Starts for ViaConlectus\_64:

(1, 47890), (16, 48244), (20, 48304), (Start: 23 @48340 has 9 MA's), (26, 48421), (27, 48424),

Gene: Zipp\_65 Start: 50512, Stop: 50670, Start Num: 23

Candidate Starts for Zipp\_65:

(20, 50476), (Start: 23 @50512 has 9 MA's), (27, 50596),