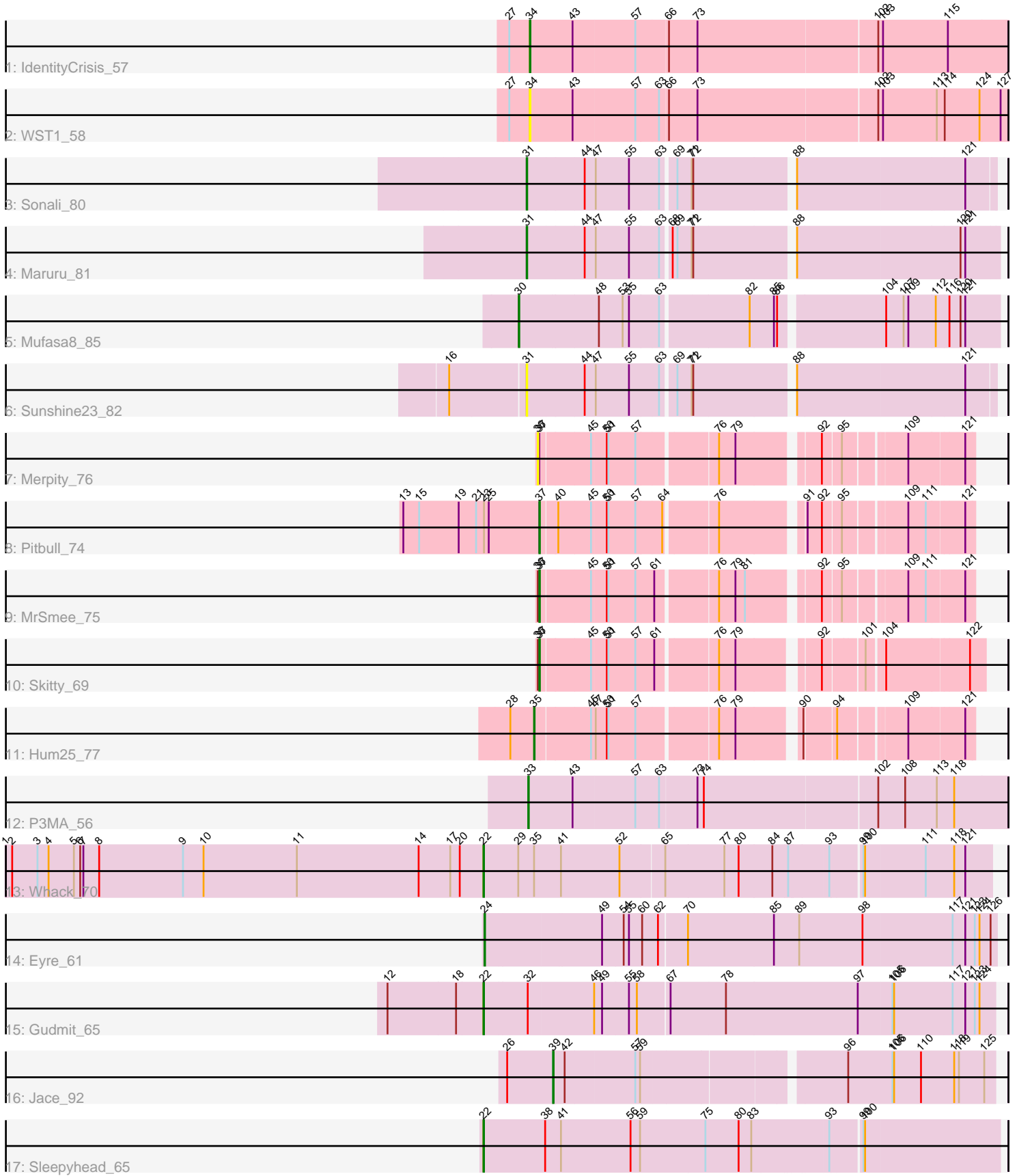


Pham 297034



Note: Tracks are now grouped by subcluster and scaled. Switching in subcluster is indicated by changes in track color. Track scale is now set by default to display the region 30 bp upstream of start 1 to 30 bp downstream of the last possible start. If this default region is judged to be packed too tightly with annotated starts, the track will be further scaled to only show that region of the ORF with annotated starts. This action will be indicated by adding "Zoomed" to the title. For starts, yellow indicates the location of called starts comprised solely of Glimmer/GeneMark auto-annotations, green indicates the location of called starts with at least 1 manual gene annotation.

Pham 297034 Report

This analysis was run 04/25/26 on database version 644.

Pham number 297034 has 17 members, 3 are drafts.

Phages represented in each track:

- Track 1 : IdentityCrisis_57
- Track 2 : WST1_58
- Track 3 : Sonali_80
- Track 4 : Maruru_81
- Track 5 : Mufasa8_85
- Track 6 : Sunshine23_82
- Track 7 : Merpity_76
- Track 8 : Pitbull_74
- Track 9 : MrSmee_75
- Track 10 : Skitty_69
- Track 11 : Hum25_77
- Track 12 : P3MA_56
- Track 13 : Whack_70
- Track 14 : Eyre_61
- Track 15 : Gudmit_65
- Track 16 : Jace_92
- Track 17 : Sleepyhead_65

Summary of Final Annotations (See graph section above for start numbers):

The start number called the most often in the published annotations is 37, it was called in 3 of the 14 non-draft genes in the pham.

Genes that call this "Most Annotated" start:

- MrSmee_75, Pitbull_74, Skitty_69,

Genes that have the "Most Annotated" start but do not call it:

- Merpity_76,

Genes that do not have the "Most Annotated" start:

- Eyre_61, Gudmit_65, Hum25_77, IdentityCrisis_57, Jace_92, Maruru_81, Mufasa8_85, P3MA_56, Sleepyhead_65, Sonali_80, Sunshine23_82, WST1_58, Whack_70,

Summary by start number:

Start 22:

- Found in 3 of 17 (17.6%) of genes in pham
- Manual Annotations of this start: 3 of 14
- Called 100.0% of time when present
- Phage (with cluster) where this start called: Gudmit_65 (singleton), Sleepyhead_65 (singleton), Whack_70 (singleton),

Start 24:

- Found in 1 of 17 (5.9%) of genes in pham
- Manual Annotations of this start: 1 of 14
- Called 100.0% of time when present
- Phage (with cluster) where this start called: Eyre_61 (singleton),

Start 30:

- Found in 1 of 17 (5.9%) of genes in pham
- Manual Annotations of this start: 1 of 14
- Called 100.0% of time when present
- Phage (with cluster) where this start called: Mufasa8_85 (FG),

Start 31:

- Found in 3 of 17 (17.6%) of genes in pham
- Manual Annotations of this start: 2 of 14
- Called 100.0% of time when present
- Phage (with cluster) where this start called: Maruru_81 (FG), Sonali_80 (FG), Sunshine23_82 (FG),

Start 33:

- Found in 1 of 17 (5.9%) of genes in pham
- Manual Annotations of this start: 1 of 14
- Called 100.0% of time when present
- Phage (with cluster) where this start called: P3MA_56 (singleton),

Start 34:

- Found in 2 of 17 (11.8%) of genes in pham
- Manual Annotations of this start: 1 of 14
- Called 100.0% of time when present
- Phage (with cluster) where this start called: IdentityCrisis_57 (AJ), WST1_58 (AJ),

Start 35:

- Found in 2 of 17 (11.8%) of genes in pham
- Manual Annotations of this start: 1 of 14
- Called 50.0% of time when present
- Phage (with cluster) where this start called: Hum25_77 (FQ),

Start 36:

- Found in 3 of 17 (17.6%) of genes in pham
- No Manual Annotations of this start.
- Called 33.3% of time when present
- Phage (with cluster) where this start called: Merpity_76 (FQ),

Start 37:

- Found in 4 of 17 (23.5%) of genes in pham
- Manual Annotations of this start: 3 of 14
- Called 75.0% of time when present
- Phage (with cluster) where this start called: MrSmee_75 (FQ), Pitbull_74 (FQ), Skitty_69 (FQ),

Start 39:

- Found in 1 of 17 (5.9%) of genes in pham
- Manual Annotations of this start: 1 of 14
- Called 100.0% of time when present
- Phage (with cluster) where this start called: Jace_92 (singleton),

Summary by clusters:

There are 4 clusters represented in this pham: FQ, singleton, AJ, FG,

Info for manual annotations of cluster AJ:

- Start number 34 was manually annotated 1 time for cluster AJ.

Info for manual annotations of cluster FG:

- Start number 30 was manually annotated 1 time for cluster FG.
- Start number 31 was manually annotated 2 times for cluster FG.

Info for manual annotations of cluster FQ:

- Start number 35 was manually annotated 1 time for cluster FQ.
- Start number 37 was manually annotated 3 times for cluster FQ.

Gene Information:

Gene: Eyre_61 Start: 39340, Stop: 40278, Start Num: 24

Candidate Starts for Eyre_61:

(Start: 24 @39340 has 1 MA's), (49, 39550), (54, 39589), (55, 39598), (60, 39622), (62, 39652), (70, 39703), (85, 39862), (89, 39910), (98, 40030), (117, 40198), (121, 40219), (123, 40237), (124, 40246), (126, 40267),

Gene: Gudmit_65 Start: 38909, Stop: 39847, Start Num: 22

Candidate Starts for Gudmit_65:

(12, 38729), (18, 38858), (Start: 22 @38909 has 3 MA's), (32, 38990), (46, 39113), (49, 39125), (55, 39173), (58, 39188), (67, 39245), (78, 39347), (97, 39596), (105, 39659), (106, 39662), (117, 39770), (121, 39791), (123, 39809), (124, 39818),

Gene: Hum25_77 Start: 39455, Stop: 40183, Start Num: 35

Candidate Starts for Hum25_77:

(28, 39410), (Start: 35 @39455 has 1 MA's), (45, 39554), (47, 39560), (50, 39581), (51, 39584), (57, 39635), (76, 39773), (79, 39803), (90, 39905), (94, 39959), (109, 40070), (121, 40166),

Gene: IdentityCrisis_57 Start: 35089, Stop: 35964, Start Num: 34

Candidate Starts for IdentityCrisis_57:

(27, 35053), (Start: 34 @35089 has 1 MA's), (43, 35170), (57, 35284), (66, 35341), (73, 35395), (102, 35725), (103, 35731), (115, 35851),

Gene: Jace_92 Start: 51606, Stop: 52397, Start Num: 39

Candidate Starts for Jace_92:

(26, 51519), (Start: 39 @51606 has 1 MA's), (42, 51627), (57, 51756), (59, 51765), (96, 52119), (105, 52203), (106, 52206), (110, 52257), (118, 52320), (119, 52329), (125, 52377),

Gene: Maruru_81 Start: 50216, Stop: 51058, Start Num: 31

Candidate Starts for Maruru_81:

(Start: 31 @50216 has 2 MA's), (44, 50321), (47, 50339), (55, 50402), (63, 50456), (68, 50471), (69, 50480), (71, 50507), (72, 50510), (88, 50684), (120, 50987), (121, 50996),

Gene: Merpity_76 Start: 39442, Stop: 40167, Start Num: 36

Candidate Starts for Merpity_76:

(36, 39442), (Start: 37 @39445 has 3 MA's), (45, 39535), (50, 39562), (51, 39565), (57, 39616), (76, 39754), (79, 39784), (92, 39919), (95, 39952), (109, 40054), (121, 40150),

Gene: MrSmee_75 Start: 39017, Stop: 39739, Start Num: 37

Candidate Starts for MrSmee_75:

(36, 39014), (Start: 37 @39017 has 3 MA's), (45, 39107), (50, 39134), (51, 39137), (57, 39188), (61, 39221), (76, 39326), (79, 39356), (81, 39374), (92, 39491), (95, 39524), (109, 39626), (111, 39659), (121, 39722),

Gene: Mufasa8_85 Start: 50444, Stop: 51298, Start Num: 30

Candidate Starts for Mufasa8_85:

(Start: 30 @50444 has 1 MA's), (48, 50588), (53, 50633), (55, 50642), (63, 50696), (82, 50852), (85, 50897), (86, 50903), (104, 51086), (107, 51119), (109, 51128), (112, 51179), (116, 51203), (120, 51224), (121, 51233),

Gene: P3MA_56 Start: 37816, Stop: 38691, Start Num: 33

Candidate Starts for P3MA_56:

(Start: 33 @37816 has 1 MA's), (43, 37900), (57, 38014), (63, 38056), (73, 38125), (74, 38137), (102, 38455), (108, 38503), (113, 38563), (118, 38593),

Gene: Pitbull_74 Start: 38878, Stop: 39600, Start Num: 37

Candidate Starts for Pitbull_74:

(13, 38620), (15, 38650), (19, 38725), (21, 38758), (23, 38773), (25, 38782), (Start: 37 @38878 has 3 MA's), (40, 38908), (45, 38968), (50, 38995), (51, 38998), (57, 39049), (64, 39097), (76, 39187), (91, 39325), (92, 39352), (95, 39385), (109, 39487), (111, 39520), (121, 39583),

Gene: Skitty_69 Start: 37268, Stop: 38008, Start Num: 37

Candidate Starts for Skitty_69:

(36, 37265), (Start: 37 @37268 has 3 MA's), (45, 37358), (50, 37385), (51, 37388), (57, 37439), (61, 37472), (76, 37577), (79, 37607), (92, 37739), (101, 37808), (104, 37832), (122, 37979),

Gene: Sleepyhead_65 Start: 41971, Stop: 42924, Start Num: 22

Candidate Starts for Sleepyhead_65:

(Start: 22 @41971 has 3 MA's), (38, 42088), (41, 42118), (56, 42250), (59, 42268), (75, 42391), (80, 42454), (83, 42478), (93, 42616), (99, 42670), (100, 42673),

Gene: Sonali_80 Start: 50220, Stop: 51053, Start Num: 31

Candidate Starts for Sonali_80:

(Start: 31 @50220 has 2 MA's), (44, 50325), (47, 50343), (55, 50406), (63, 50460), (69, 50484), (71, 50511), (72, 50514), (88, 50688), (121, 51000),

Gene: Sunshine23_82 Start: 50194, Stop: 51027, Start Num: 31

Candidate Starts for Sunshine23_82:

(16, 50056), (Start: 31 @50194 has 2 MA's), (44, 50299), (47, 50317), (55, 50380), (63, 50434), (69, 50458), (71, 50485), (72, 50488), (88, 50662), (121, 50974),

Gene: WST1_58 Start: 34901, Stop: 35776, Start Num: 34

Candidate Starts for WST1_58:

(27, 34865), (Start: 34 @34901 has 1 MA's), (43, 34982), (57, 35096), (63, 35138), (66, 35153), (73, 35207), (102, 35537), (103, 35543), (113, 35645), (114, 35657), (124, 35723), (127, 35762),

Gene: Whack_70 Start: 45809, Stop: 46741, Start Num: 22

Candidate Starts for Whack_70:

(1, 44903), (2, 44915), (3, 44963), (4, 44984), (5, 45032), (6, 45044), (7, 45050), (8, 45080), (9, 45239), (10, 45278), (11, 45455), (14, 45686), (17, 45746), (20, 45764), (Start: 22 @45809 has 3 MA's), (29, 45875), (Start: 35 @45905 has 1 MA's), (41, 45956), (52, 46067), (65, 46148), (77, 46259), (80, 46286), (84, 46349), (87, 46376), (93, 46448), (99, 46502), (100, 46505), (111, 46616), (118, 46670), (121, 46691),