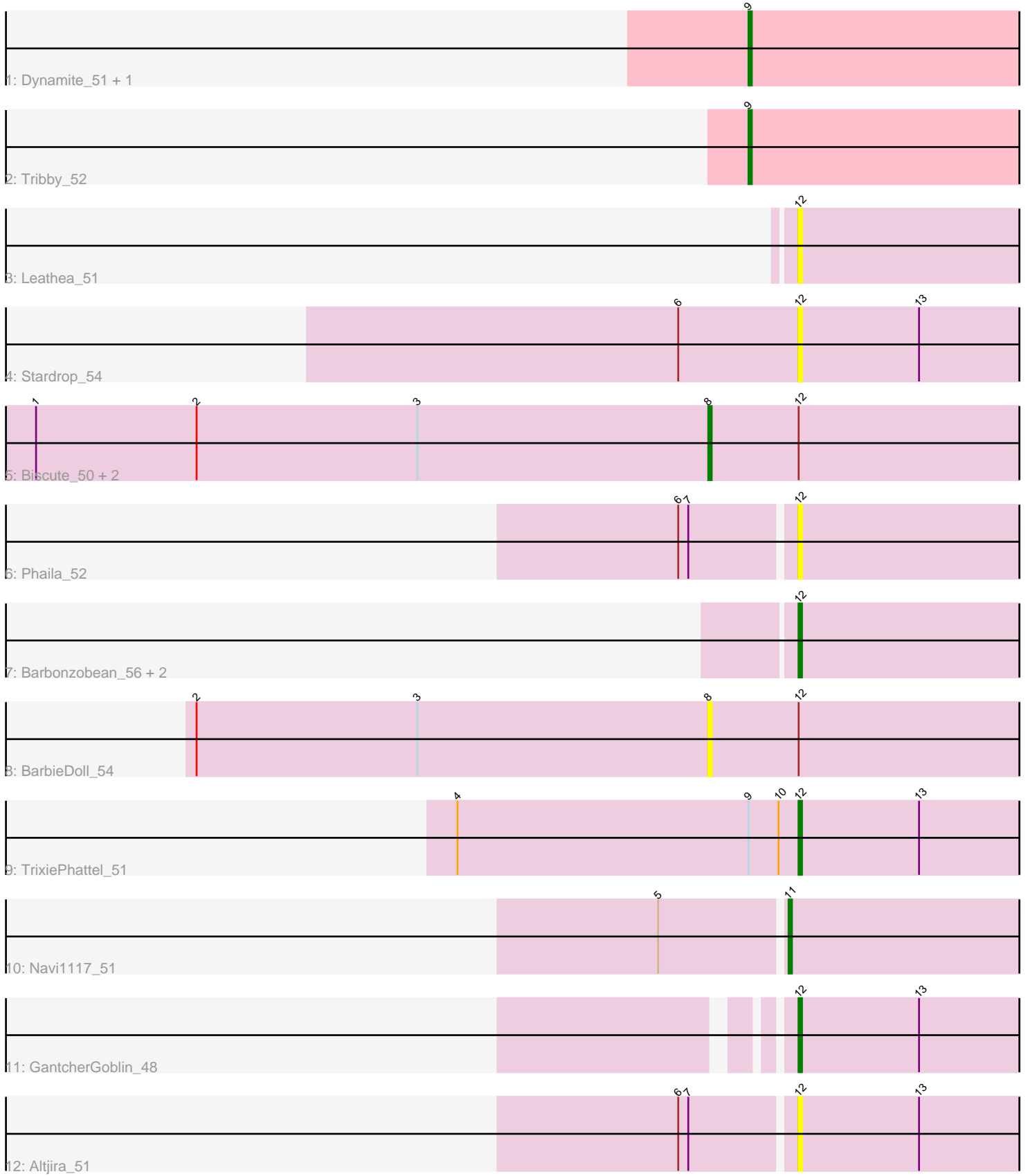


Pham 297036



Note: Tracks are now grouped by subcluster and scaled. Switching in subcluster is indicated by changes in track color. Track scale is now set by default to display the region 30 bp upstream of start 1 to 30 bp downstream of the last possible start. If this default region is judged to be packed too tightly with annotated starts, the track will be further scaled to only show that region of the ORF with annotated starts. This action will be indicated by adding "Zoomed" to the title. For starts, yellow indicates the location of called starts comprised solely of Glimmer/GeneMark auto-annotations, green indicates the location of called starts with at least 1 manual gene annotation.

## Pham 297036 Report

This analysis was run 04/25/26 on database version 644.

Pham number 297036 has 17 members, 8 are drafts.

Phages represented in each track:

- Track 1 : Dynamite\_51, NapoleonB\_51
- Track 2 : Tribby\_52
- Track 3 : Leathea\_51
- Track 4 : Stardrop\_54
- Track 5 : Biscute\_50, Kinny\_53, Muglass\_52
- Track 6 : Phaila\_52
- Track 7 : Barbonzobean\_56, Renaldo\_56, Lewando\_53
- Track 8 : BarbieDoll\_54
- Track 9 : TrixiePhattel\_51
- Track 10 : Navi1117\_51
- Track 11 : GantcherGoblin\_48
- Track 12 : Altjira\_51

### ***Summary of Final Annotations (See graph section above for start numbers):***

The start number called the most often in the published annotations is 9, it was called in 3 of the 9 non-draft genes in the pham.

Genes that call this "Most Annotated" start:

- Dynamite\_51, NapoleonB\_51, Tribby\_52,

Genes that have the "Most Annotated" start but do not call it:

- TrixiePhattel\_51,

Genes that do not have the "Most Annotated" start:

- Altjira\_51, BarbieDoll\_54, Barbonzobean\_56, Biscute\_50, GantcherGoblin\_48, Kinny\_53, Leathea\_51, Lewando\_53, Muglass\_52, Navi1117\_51, Phaila\_52, Renaldo\_56, Stardrop\_54,

### **Summary by start number:**

Start 8:

- Found in 4 of 17 ( 23.5% ) of genes in pham
- Manual Annotations of this start: 2 of 9

- Called 100.0% of time when present
- Phage (with cluster) where this start called: BarbieDoll\_54 (AU6), Biscute\_50 (AU6), Kinny\_53 (AU6), Muglass\_52 (AU6),

Start 9:

- Found in 4 of 17 ( 23.5% ) of genes in pham
- Manual Annotations of this start: 3 of 9
- Called 75.0% of time when present
- Phage (with cluster) where this start called: Dynamite\_51 (AM), NapoleonB\_51 (AM), Tribby\_52 (AM),

Start 11:

- Found in 1 of 17 ( 5.9% ) of genes in pham
- Manual Annotations of this start: 1 of 9
- Called 100.0% of time when present
- Phage (with cluster) where this start called: Navi1117\_51 (AU6),

Start 12:

- Found in 13 of 17 ( 76.5% ) of genes in pham
- Manual Annotations of this start: 3 of 9
- Called 69.2% of time when present
- Phage (with cluster) where this start called: Altjira\_51 (AU6), Barbonzobean\_56 (AU6), GantcherGoblin\_48 (AU6), Leathea\_51 (AU6), Lewando\_53 (AU6), Phaila\_52 (AU6), Renaldo\_56 (AU6), Stardrop\_54 (AU6), TrixiePhattel\_51 (AU6),

### **Summary by clusters:**

There are 2 clusters represented in this pham: AM, AU6,

Info for manual annotations of cluster AM:

- Start number 9 was manually annotated 3 times for cluster AM.

Info for manual annotations of cluster AU6:

- Start number 8 was manually annotated 2 times for cluster AU6.
- Start number 11 was manually annotated 1 time for cluster AU6.
- Start number 12 was manually annotated 3 times for cluster AU6.

### **Gene Information:**

Gene: Altjira\_51 Start: 34432, Stop: 34554, Start Num: 12

Candidate Starts for Altjira\_51:

(6, 34399), (7, 34402), (Start: 12 @34432 has 3 MA's), (13, 34468),

Gene: BarbieDoll\_54 Start: 34859, Stop: 34999, Start Num: 8

Candidate Starts for BarbieDoll\_54:

(2, 34706), (3, 34772), (Start: 8 @34859 has 2 MA's), (Start: 12 @34886 has 3 MA's),

Gene: Barbonzobean\_56 Start: 35146, Stop: 35265, Start Num: 12

Candidate Starts for Barbonzobean\_56:

(Start: 12 @35146 has 3 MA's),

Gene: Biscute\_50 Start: 34511, Stop: 34651, Start Num: 8  
Candidate Starts for Biscute\_50:  
(1, 34310), (2, 34358), (3, 34424), (Start: 8 @34511 has 2 MA's), (Start: 12 @34538 has 3 MA's),

Gene: Dynamite\_51 Start: 33040, Stop: 33168, Start Num: 9  
Candidate Starts for Dynamite\_51:  
(Start: 9 @33040 has 3 MA's),

Gene: GantcherGoblin\_48 Start: 33220, Stop: 33339, Start Num: 12  
Candidate Starts for GantcherGoblin\_48:  
(Start: 12 @33220 has 3 MA's), (13, 33256),

Gene: Kinny\_53 Start: 35354, Stop: 35494, Start Num: 8  
Candidate Starts for Kinny\_53:  
(1, 35153), (2, 35201), (3, 35267), (Start: 8 @35354 has 2 MA's), (Start: 12 @35381 has 3 MA's),

Gene: Leathea\_51 Start: 33316, Stop: 33435, Start Num: 12  
Candidate Starts for Leathea\_51:  
(Start: 12 @33316 has 3 MA's),

Gene: Lewando\_53 Start: 34888, Stop: 35001, Start Num: 12  
Candidate Starts for Lewando\_53:  
(Start: 12 @34888 has 3 MA's),

Gene: Muglass\_52 Start: 34415, Stop: 34555, Start Num: 8  
Candidate Starts for Muglass\_52:  
(1, 34214), (2, 34262), (3, 34328), (Start: 8 @34415 has 2 MA's), (Start: 12 @34442 has 3 MA's),

Gene: NapoleonB\_51 Start: 33040, Stop: 33168, Start Num: 9  
Candidate Starts for NapoleonB\_51:  
(Start: 9 @33040 has 3 MA's),

Gene: Navi1117\_51 Start: 33929, Stop: 34051, Start Num: 11  
Candidate Starts for Navi1117\_51:  
(5, 33893), (Start: 11 @33929 has 1 MA's),

Gene: Phaila\_52 Start: 33313, Stop: 33432, Start Num: 12  
Candidate Starts for Phaila\_52:  
(6, 33280), (7, 33283), (Start: 12 @33313 has 3 MA's),

Gene: Renaldo\_56 Start: 35197, Stop: 35310, Start Num: 12  
Candidate Starts for Renaldo\_56:  
(Start: 12 @35197 has 3 MA's),

Gene: Stardrop\_54 Start: 33937, Stop: 34056, Start Num: 12  
Candidate Starts for Stardrop\_54:  
(6, 33901), (Start: 12 @33937 has 3 MA's), (13, 33973),

Gene: Tribby\_52 Start: 33045, Stop: 33176, Start Num: 9  
Candidate Starts for Tribby\_52:  
(Start: 9 @33045 has 3 MA's),

Gene: TrixiePhattel\_51 Start: 33340, Stop: 33459, Start Num: 12

Candidate Starts for TrixiePhattel\_51:

(4, 33238), (Start: 9 @33325 has 3 MA's), (10, 33334), (Start: 12 @33340 has 3 MA's), (13, 33376),