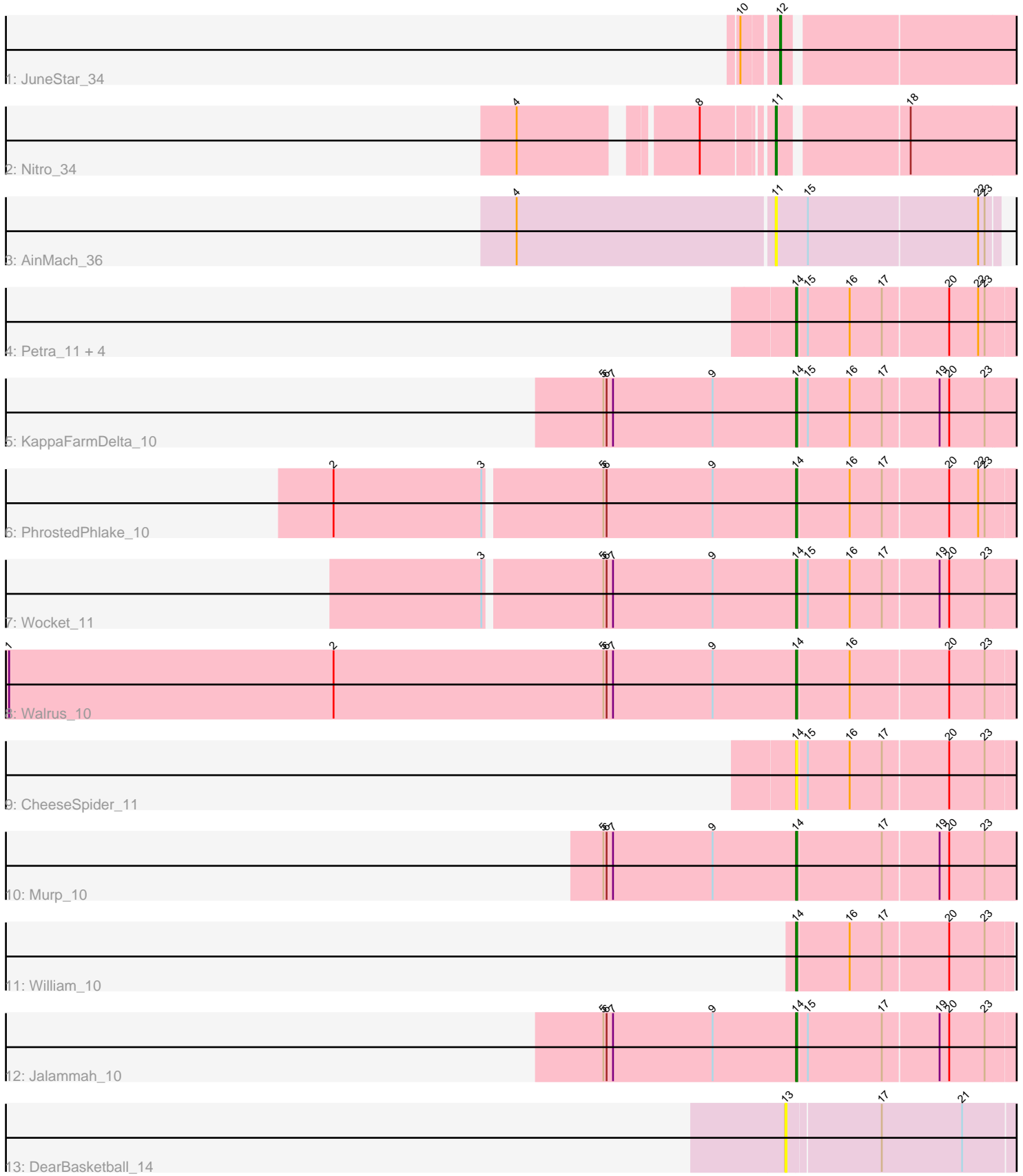


Pham 297039



Note: Tracks are now grouped by subcluster and scaled. Switching in subcluster is indicated by changes in track color. Track scale is now set by default to display the region 30 bp upstream of start 1 to 30 bp downstream of the last possible start. If this default region is judged to be packed too tightly with annotated starts, the track will be further scaled to only show that region of the ORF with annotated starts. This action will be indicated by adding "Zoomed" to the title. For starts, yellow indicates the location of called starts comprised solely of Glimmer/GeneMark auto-annotations, green indicates the location of called starts with at least 1 manual gene annotation.

## Pham 297039 Report

This analysis was run 04/25/26 on database version 644.

Pham number 297039 has 17 members, 3 are drafts.

Phages represented in each track:

- Track 1 : JuneStar\_34
- Track 2 : Nitro\_34
- Track 3 : AinMach\_36
- Track 4 : Petra\_11, Gambino\_11, Azula\_11, Blueberry\_11, MissRona\_11
- Track 5 : KappaFarmDelta\_10
- Track 6 : PhrostedPhlake\_10
- Track 7 : Wocket\_11
- Track 8 : Walrus\_10
- Track 9 : CheeseSpider\_11
- Track 10 : Murp\_10
- Track 11 : William\_10
- Track 12 : Jalammah\_10
- Track 13 : DearBasketball\_14

### ***Summary of Final Annotations (See graph section above for start numbers):***

The start number called the most often in the published annotations is 14, it was called in 12 of the 14 non-draft genes in the pham.

Genes that call this "Most Annotated" start:

- Azula\_11, Blueberry\_11, CheeseSpider\_11, Gambino\_11, Jalammah\_10, KappaFarmDelta\_10, MissRona\_11, Murp\_10, Petra\_11, PhrostedPhlake\_10, Walrus\_10, William\_10, Wocket\_11,

Genes that have the "Most Annotated" start but do not call it:

- 

Genes that do not have the "Most Annotated" start:

- AinMach\_36, DearBasketball\_14, JuneStar\_34, Nitro\_34,

### **Summary by start number:**

Start 11:

- Found in 2 of 17 ( 11.8% ) of genes in pham

- Manual Annotations of this start: 1 of 14
- Called 100.0% of time when present
- Phage (with cluster) where this start called: AinMach\_36 (AZ7), Nitro\_34 (AZ1),

Start 12:

- Found in 1 of 17 ( 5.9% ) of genes in pham
- Manual Annotations of this start: 1 of 14
- Called 100.0% of time when present
- Phage (with cluster) where this start called: JuneStar\_34 (AZ1),

Start 13:

- Found in 1 of 17 ( 5.9% ) of genes in pham
- No Manual Annotations of this start.
- Called 100.0% of time when present
- Phage (with cluster) where this start called: DearBasketball\_14 (DY),

Start 14:

- Found in 13 of 17 ( 76.5% ) of genes in pham
- Manual Annotations of this start: 12 of 14
- Called 100.0% of time when present
- Phage (with cluster) where this start called: Azula\_11 (CV), Blueberry\_11 (CV), CheeseSpider\_11 (CV), Gambino\_11 (CV), Jalammah\_10 (CV), KappaFarmDelta\_10 (CV), MissRona\_11 (CV), Murp\_10 (CV), Petra\_11 (CV), PhrostedPhlake\_10 (CV), Walrus\_10 (CV), William\_10 (CV), Wocket\_11 (CV),

### **Summary by clusters:**

There are 4 clusters represented in this pham: AZ1, AZ7, CV, DY,

Info for manual annotations of cluster AZ1:

- Start number 11 was manually annotated 1 time for cluster AZ1.
- Start number 12 was manually annotated 1 time for cluster AZ1.

Info for manual annotations of cluster CV:

- Start number 14 was manually annotated 12 times for cluster CV.

### **Gene Information:**

Gene: AinMach\_36 Start: 25836, Stop: 26039, Start Num: 11

Candidate Starts for AinMach\_36:

(4, 25599), (Start: 11 @25836 has 1 MA's), (15, 25866), (22, 26022), (23, 26028),

Gene: Azula\_11 Start: 7396, Stop: 7596, Start Num: 14

Candidate Starts for Azula\_11:

(Start: 14 @7396 has 12 MA's), (15, 7405), (16, 7444), (17, 7474), (20, 7534), (22, 7561), (23, 7567),

Gene: Blueberry\_11 Start: 7396, Stop: 7596, Start Num: 14

Candidate Starts for Blueberry\_11:

(Start: 14 @7396 has 12 MA's), (15, 7405), (16, 7444), (17, 7474), (20, 7534), (22, 7561), (23, 7567),

Gene: CheeseSpider\_11 Start: 7399, Stop: 7599, Start Num: 14  
Candidate Starts for CheeseSpider\_11:  
(Start: 14 @7399 has 12 MA's), (15, 7408), (16, 7447), (17, 7477), (20, 7537), (23, 7570),

Gene: DearBasketball\_14 Start: 8609, Stop: 8818, Start Num: 13  
Candidate Starts for DearBasketball\_14:  
(13, 8609), (17, 8693), (21, 8768),

Gene: Gambino\_11 Start: 7396, Stop: 7596, Start Num: 14  
Candidate Starts for Gambino\_11:  
(Start: 14 @7396 has 12 MA's), (15, 7405), (16, 7444), (17, 7474), (20, 7534), (22, 7561), (23, 7567),

Gene: Jalammah\_10 Start: 7330, Stop: 7530, Start Num: 14  
Candidate Starts for Jalammah\_10:  
(5, 7150), (6, 7153), (7, 7159), (9, 7252), (Start: 14 @7330 has 12 MA's), (15, 7339), (17, 7408), (19, 7459), (20, 7468), (23, 7501),

Gene: JuneStar\_34 Start: 27010, Stop: 27216, Start Num: 12  
Candidate Starts for JuneStar\_34:  
(10, 26980), (Start: 12 @27010 has 1 MA's),

Gene: KappaFarmDelta\_10 Start: 7368, Stop: 7577, Start Num: 14  
Candidate Starts for KappaFarmDelta\_10:  
(5, 7188), (6, 7191), (7, 7197), (9, 7290), (Start: 14 @7368 has 12 MA's), (15, 7377), (16, 7416), (17, 7446), (19, 7497), (20, 7506), (23, 7539),

Gene: MissRona\_11 Start: 7396, Stop: 7596, Start Num: 14  
Candidate Starts for MissRona\_11:  
(Start: 14 @7396 has 12 MA's), (15, 7405), (16, 7444), (17, 7474), (20, 7534), (22, 7561), (23, 7567),

Gene: Murp\_10 Start: 7371, Stop: 7577, Start Num: 14  
Candidate Starts for Murp\_10:  
(5, 7191), (6, 7194), (7, 7200), (9, 7293), (Start: 14 @7371 has 12 MA's), (17, 7449), (19, 7500), (20, 7509), (23, 7542),

Gene: Nitro\_34 Start: 26183, Stop: 26392, Start Num: 11  
Candidate Starts for Nitro\_34:  
(4, 25982), (8, 26126), (Start: 11 @26183 has 1 MA's), (18, 26294),

Gene: Petra\_11 Start: 7429, Stop: 7629, Start Num: 14  
Candidate Starts for Petra\_11:  
(Start: 14 @7429 has 12 MA's), (15, 7438), (16, 7477), (17, 7507), (20, 7567), (22, 7594), (23, 7600),

Gene: PhrostedPhlake\_10 Start: 7411, Stop: 7611, Start Num: 14  
Candidate Starts for PhrostedPhlake\_10:  
(2, 6988), (3, 7126), (5, 7231), (6, 7234), (9, 7333), (Start: 14 @7411 has 12 MA's), (16, 7459), (17, 7489), (20, 7549), (22, 7576), (23, 7582),

Gene: Walrus\_10 Start: 7251, Stop: 7451, Start Num: 14  
Candidate Starts for Walrus\_10:  
(1, 6516), (2, 6819), (5, 7071), (6, 7074), (7, 7080), (9, 7173), (Start: 14 @7251 has 12 MA's), (16, 7299), (20, 7389), (23, 7422),

Gene: William\_10 Start: 7330, Stop: 7524, Start Num: 14

Candidate Starts for William\_10:

(Start: 14 @7330 has 12 MA's), (16, 7378), (17, 7408), (20, 7468), (23, 7501),

Gene: Wocket\_11 Start: 7607, Stop: 7813, Start Num: 14

Candidate Starts for Wocket\_11:

(3, 7322), (5, 7427), (6, 7430), (7, 7436), (9, 7529), (Start: 14 @7607 has 12 MA's), (15, 7616), (16, 7655), (17, 7685), (19, 7736), (20, 7745), (23, 7778),