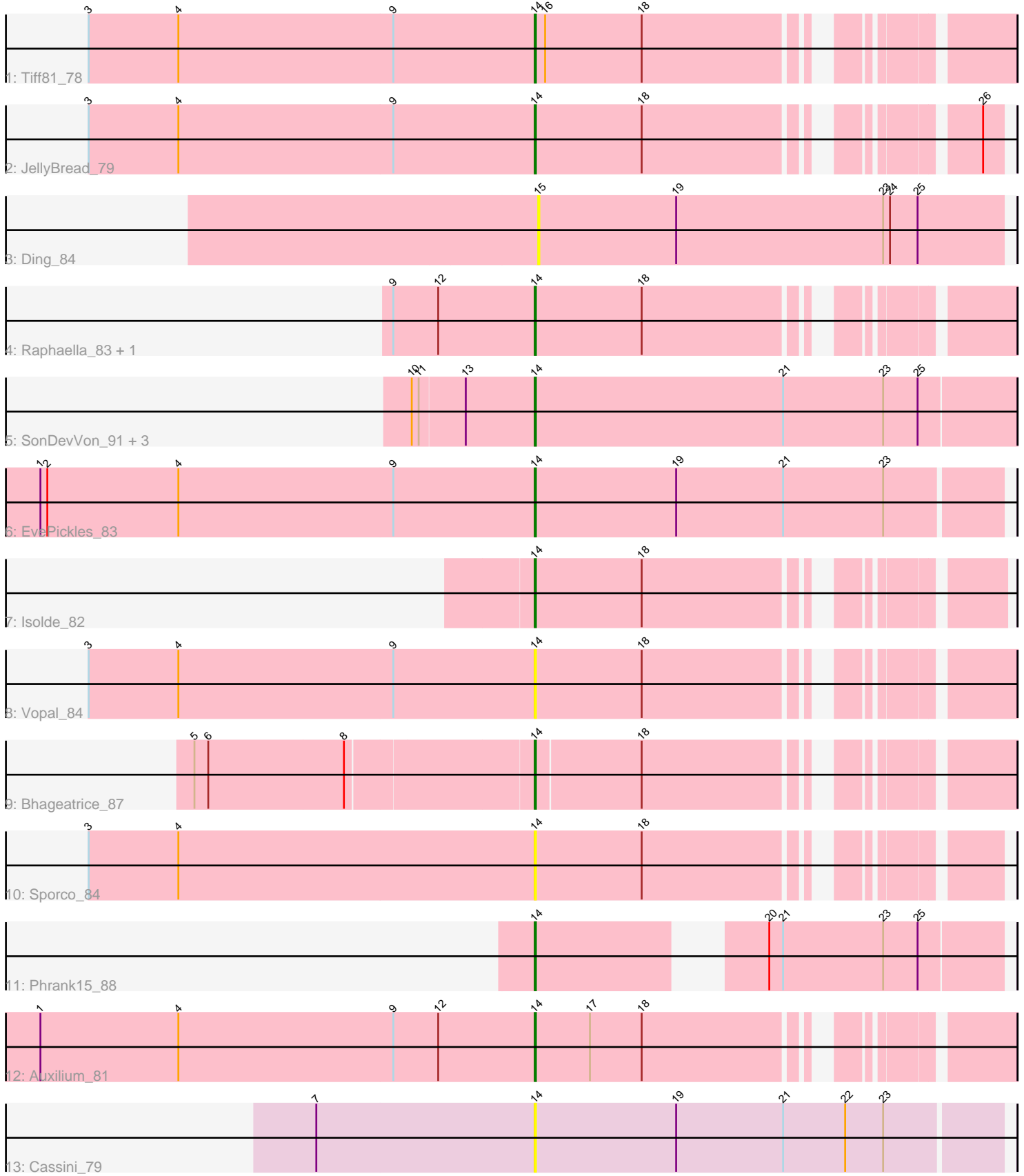


# Pham 297040



Note: Tracks are now grouped by subcluster and scaled. Switching in subcluster is indicated by changes in track color. Track scale is now set by default to display the region 30 bp upstream of start 1 to 30 bp downstream of the last possible start. If this default region is judged to be packed too tightly with annotated starts, the track will be further scaled to only show that region of the ORF with annotated starts. This action will be indicated by adding "Zoomed" to the title. For starts, yellow indicates the location of called starts comprised solely of Glimmer/GeneMark auto-annotations, green indicates the location of called starts with at least 1 manual gene annotation.

## Pham 297040 Report

This analysis was run 04/25/26 on database version 644.

Pham number 297040 has 17 members, 5 are drafts.

Phages represented in each track:

- Track 1 : Tiff81\_78
- Track 2 : JellyBread\_79
- Track 3 : Ding\_84
- Track 4 : Raphaella\_83, Faja\_85
- Track 5 : SonDevVon\_91, Gorpy\_81, Sakai\_80, CookieBear\_82
- Track 6 : EvePickles\_83
- Track 7 : Isolde\_82
- Track 8 : Vopal\_84
- Track 9 : Bhageatrice\_87
- Track 10 : Sporco\_84
- Track 11 : Phrank15\_88
- Track 12 : Auxilium\_81
- Track 13 : Cassini\_79

### ***Summary of Final Annotations (See graph section above for start numbers):***

The start number called the most often in the published annotations is 14, it was called in 12 of the 12 non-draft genes in the pham.

Genes that call this "Most Annotated" start:

- Auxilium\_81, Bhageatrice\_87, Cassini\_79, CookieBear\_82, EvePickles\_83, Faja\_85, Gorpy\_81, Isolde\_82, JellyBread\_79, Phrank15\_88, Raphaella\_83, Sakai\_80, SonDevVon\_91, Sporco\_84, Tiff81\_78, Vopal\_84,

Genes that have the "Most Annotated" start but do not call it:

- 

Genes that do not have the "Most Annotated" start:

- Ding\_84,

### **Summary by start number:**

Start 14:

- Found in 16 of 17 ( 94.1% ) of genes in pham

- Manual Annotations of this start: 12 of 12
- Called 100.0% of time when present
- Phage (with cluster) where this start called: Auxilium\_81 (AY), Bhageatrice\_87 (AY), Cassini\_79 (FN), CookieBear\_82 (AY), EvePickles\_83 (AY), Faja\_85 (AY), Gorpy\_81 (AY), Isolde\_82 (AY), JellyBread\_79 (AY), Phrank15\_88 (AY), Raphaella\_83 (AY), Sakai\_80 (AY), SonDevVon\_91 (AY), Sporco\_84 (AY), Tiff81\_78 (AY), Vopal\_84 (AY),

Start 15:

- Found in 1 of 17 ( 5.9% ) of genes in pham
- No Manual Annotations of this start.
- Called 100.0% of time when present
- Phage (with cluster) where this start called: Ding\_84 (AY),

### Summary by clusters:

There are 2 clusters represented in this pham: AY, FN,

Info for manual annotations of cluster AY:

- Start number 14 was manually annotated 12 times for cluster AY.

### Gene Information:

Gene: Auxilium\_81 Start: 45001, Stop: 45360, Start Num: 14

Candidate Starts for Auxilium\_81:

(1, 44572), (4, 44692), (9, 44878), (12, 44917), (Start: 14 @45001 has 12 MA's), (17, 45049), (18, 45094),

Gene: Bhageatrice\_87 Start: 50237, Stop: 50593, Start Num: 14

Candidate Starts for Bhageatrice\_87:

(5, 49952), (6, 49964), (8, 50081), (Start: 14 @50237 has 12 MA's), (18, 50327),

Gene: Cassini\_79 Start: 46271, Stop: 46672, Start Num: 14

Candidate Starts for Cassini\_79:

(7, 46082), (Start: 14 @46271 has 12 MA's), (19, 46394), (21, 46487), (22, 46541), (23, 46574),

Gene: CookieBear\_82 Start: 46578, Stop: 46994, Start Num: 14

Candidate Starts for CookieBear\_82:

(10, 46473), (11, 46479), (13, 46518), (Start: 14 @46578 has 12 MA's), (21, 46794), (23, 46881), (25, 46911),

Gene: Ding\_84 Start: 46525, Stop: 46929, Start Num: 15

Candidate Starts for Ding\_84:

(15, 46525), (19, 46645), (23, 46825), (24, 46831), (25, 46855),

Gene: EvePickles\_83 Start: 48170, Stop: 48571, Start Num: 14

Candidate Starts for EvePickles\_83:

(1, 47741), (2, 47747), (4, 47861), (9, 48047), (Start: 14 @48170 has 12 MA's), (19, 48293), (21, 48386), (23, 48473),

Gene: Faja\_85 Start: 48003, Stop: 48362, Start Num: 14  
Candidate Starts for Faja\_85:  
(9, 47880), (12, 47919), (Start: 14 @48003 has 12 MA's), (18, 48096),

Gene: Gorpy\_81 Start: 47920, Stop: 48336, Start Num: 14  
Candidate Starts for Gorpy\_81:  
(10, 47815), (11, 47821), (13, 47860), (Start: 14 @47920 has 12 MA's), (21, 48136), (23, 48223), (25, 48253),

Gene: Isolde\_82 Start: 47475, Stop: 47825, Start Num: 14  
Candidate Starts for Isolde\_82:  
(Start: 14 @47475 has 12 MA's), (18, 47568),

Gene: JellyBread\_79 Start: 46390, Stop: 46737, Start Num: 14  
Candidate Starts for JellyBread\_79:  
(3, 46003), (4, 46081), (9, 46267), (Start: 14 @46390 has 12 MA's), (18, 46483), (26, 46720),

Gene: Phrank15\_88 Start: 47981, Stop: 48337, Start Num: 14  
Candidate Starts for Phrank15\_88:  
(Start: 14 @47981 has 12 MA's), (20, 48137), (21, 48149), (23, 48236), (25, 48266),

Gene: Raphaella\_83 Start: 46297, Stop: 46656, Start Num: 14  
Candidate Starts for Raphaella\_83:  
(9, 46174), (12, 46213), (Start: 14 @46297 has 12 MA's), (18, 46390),

Gene: Sakai\_80 Start: 46631, Stop: 47047, Start Num: 14  
Candidate Starts for Sakai\_80:  
(10, 46526), (11, 46532), (13, 46571), (Start: 14 @46631 has 12 MA's), (21, 46847), (23, 46934), (25, 46964),

Gene: SonDevVon\_91 Start: 47576, Stop: 47992, Start Num: 14  
Candidate Starts for SonDevVon\_91:  
(10, 47471), (11, 47477), (13, 47516), (Start: 14 @47576 has 12 MA's), (21, 47792), (23, 47879), (25, 47909),

Gene: Sporco\_84 Start: 47977, Stop: 48324, Start Num: 14  
Candidate Starts for Sporco\_84:  
(3, 47590), (4, 47668), (Start: 14 @47977 has 12 MA's), (18, 48070),

Gene: Tiff81\_78 Start: 45438, Stop: 45797, Start Num: 14  
Candidate Starts for Tiff81\_78:  
(3, 45051), (4, 45129), (9, 45315), (Start: 14 @45438 has 12 MA's), (16, 45447), (18, 45531),

Gene: Vopal\_84 Start: 48363, Stop: 48722, Start Num: 14  
Candidate Starts for Vopal\_84:  
(3, 47976), (4, 48054), (9, 48240), (Start: 14 @48363 has 12 MA's), (18, 48456),