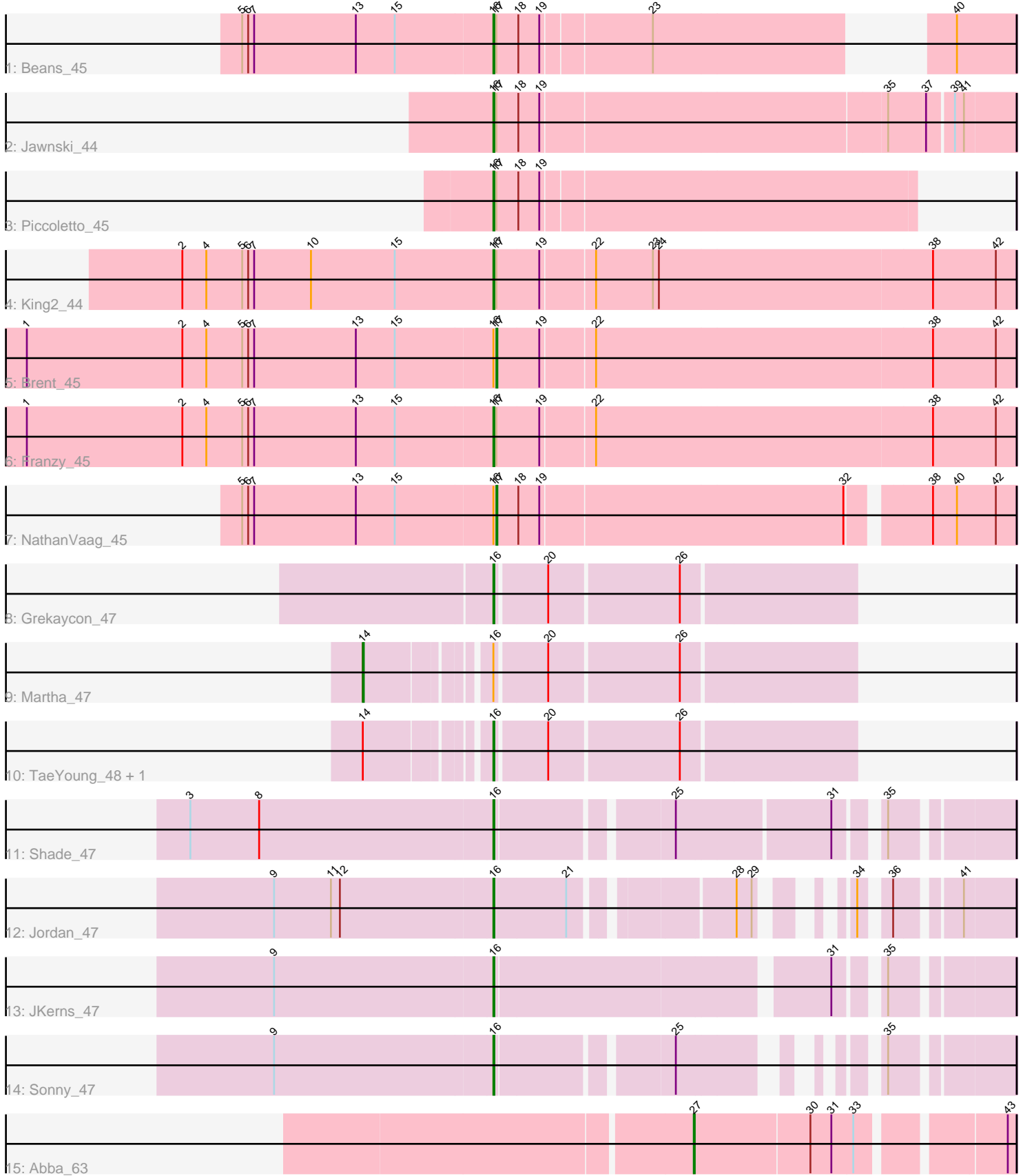


Pham 297047



Note: Tracks are now grouped by subcluster and scaled. Switching in subcluster is indicated by changes in track color. Track scale is now set by default to display the region 30 bp upstream of start 1 to 30 bp downstream of the last possible start. If this default region is judged to be packed too tightly with annotated starts, the track will be further scaled to only show that region of the ORF with annotated starts. This action will be indicated by adding "Zoomed" to the title. For starts, yellow indicates the location of called starts comprised solely of Glimmer/GeneMark auto-annotations, green indicates the location of called starts with at least 1 manual gene annotation.

Pham 297047 Report

This analysis was run 04/25/26 on database version 644.

Pham number 297047 has 16 members, 0 are drafts.

Phages represented in each track:

- Track 1 : Beans_45
- Track 2 : Jawnski_44
- Track 3 : Piccoletto_45
- Track 4 : King2_44
- Track 5 : Brent_45
- Track 6 : Franzy_45
- Track 7 : NathanVaag_45
- Track 8 : Grekaycon_47
- Track 9 : Martha_47
- Track 10 : TaeYoung_48, BossLady_48
- Track 11 : Shade_47
- Track 12 : Jordan_47
- Track 13 : JKerns_47
- Track 14 : Sonny_47
- Track 15 : Abba_63

Summary of Final Annotations (See graph section above for start numbers):

The start number called the most often in the published annotations is 16, it was called in 12 of the 16 non-draft genes in the pham.

Genes that call this "Most Annotated" start:

- Beans_45, BossLady_48, Franzy_45, Grekaycon_47, JKerns_47, Jawnski_44, Jordan_47, King2_44, Piccoletto_45, Shade_47, Sonny_47, TaeYoung_48,

Genes that have the "Most Annotated" start but do not call it:

- Brent_45, Martha_47, NathanVaag_45,

Genes that do not have the "Most Annotated" start:

- Abba_63,

Summary by start number:

Start 14:

- Found in 3 of 16 (18.8%) of genes in pham
- Manual Annotations of this start: 1 of 16
- Called 33.3% of time when present
- Phage (with cluster) where this start called: Martha_47 (AO2),

Start 16:

- Found in 15 of 16 (93.8%) of genes in pham
- Manual Annotations of this start: 12 of 16
- Called 80.0% of time when present
- Phage (with cluster) where this start called: Beans_45 (AO1), BossLady_48 (AO2), Franzy_45 (AO1), Grekaycon_47 (AO2), JKerns_47 (AO2), Jawnski_44 (AO1), Jordan_47 (AO2), King2_44 (AO1), Piccoletto_45 (AO1), Shade_47 (AO2), Sonny_47 (AO2), TaeYoung_48 (AO2),

Start 17:

- Found in 7 of 16 (43.8%) of genes in pham
- Manual Annotations of this start: 2 of 16
- Called 28.6% of time when present
- Phage (with cluster) where this start called: Brent_45 (AO1), NathanVaag_45 (AO1),

Start 27:

- Found in 1 of 16 (6.2%) of genes in pham
- Manual Annotations of this start: 1 of 16
- Called 100.0% of time when present
- Phage (with cluster) where this start called: Abba_63 (AO3),

Summary by clusters:

There are 3 clusters represented in this pham: AO3, AO2, AO1,

Info for manual annotations of cluster AO1:

- Start number 16 was manually annotated 5 times for cluster AO1.
- Start number 17 was manually annotated 2 times for cluster AO1.

Info for manual annotations of cluster AO2:

- Start number 14 was manually annotated 1 time for cluster AO2.
- Start number 16 was manually annotated 7 times for cluster AO2.

Info for manual annotations of cluster AO3:

- Start number 27 was manually annotated 1 time for cluster AO3.

Gene Information:

Gene: Abba_63 Start: 40699, Stop: 40992, Start Num: 27

Candidate Starts for Abba_63:

(Start: 27 @40699 has 1 MA's), (30, 40813), (31, 40834), (33, 40855), (43, 40984),

Gene: Beans_45 Start: 35986, Stop: 36414, Start Num: 16

Candidate Starts for Beans_45:

(5, 35737), (6, 35743), (7, 35749), (13, 35851), (15, 35890), (Start: 16 @35986 has 12 MA's), (Start: 17 @35989 has 2 MA's), (18, 36010), (19, 36031), (23, 36136), (40, 36355),

Gene: BossLady_48 Start: 36316, Stop: 36657, Start Num: 16

Candidate Starts for BossLady_48:

(Start: 14 @36211 has 1 MA's), (Start: 16 @36316 has 12 MA's), (20, 36364), (26, 36490),

Gene: Brent_45 Start: 36162, Stop: 36671, Start Num: 17

Candidate Starts for Brent_45:

(1, 35694), (2, 35850), (4, 35874), (5, 35910), (6, 35916), (7, 35922), (13, 36024), (15, 36063), (Start: 16 @36159 has 12 MA's), (Start: 17 @36162 has 2 MA's), (19, 36204), (22, 36255), (38, 36588), (42, 36651),

Gene: Franzy_45 Start: 36175, Stop: 36687, Start Num: 16

Candidate Starts for Franzy_45:

(1, 35710), (2, 35866), (4, 35890), (5, 35926), (6, 35932), (7, 35938), (13, 36040), (15, 36079), (Start: 16 @36175 has 12 MA's), (Start: 17 @36178 has 2 MA's), (19, 36220), (22, 36271), (38, 36604), (42, 36667),

Gene: Grekaycon_47 Start: 36212, Stop: 36553, Start Num: 16

Candidate Starts for Grekaycon_47:

(Start: 16 @36212 has 12 MA's), (20, 36260), (26, 36386),

Gene: JKerns_47 Start: 36354, Stop: 36812, Start Num: 16

Candidate Starts for JKerns_47:

(9, 36138), (Start: 16 @36354 has 12 MA's), (31, 36666), (35, 36702),

Gene: Jawnski_44 Start: 35695, Stop: 36195, Start Num: 16

Candidate Starts for Jawnski_44:

(Start: 16 @35695 has 12 MA's), (Start: 17 @35698 has 2 MA's), (18, 35719), (19, 35740), (35, 36076), (37, 36112), (39, 36136), (41, 36145),

Gene: Jordan_47 Start: 36244, Stop: 36639, Start Num: 16

Candidate Starts for Jordan_47:

(9, 36028), (11, 36085), (12, 36094), (Start: 16 @36244 has 12 MA's), (21, 36316), (28, 36454), (29, 36469), (34, 36514), (36, 36535), (41, 36589),

Gene: King2_44 Start: 36006, Stop: 36518, Start Num: 16

Candidate Starts for King2_44:

(2, 35694), (4, 35718), (5, 35754), (6, 35760), (7, 35766), (10, 35823), (15, 35907), (Start: 16 @36006 has 12 MA's), (Start: 17 @36009 has 2 MA's), (19, 36051), (22, 36102), (23, 36159), (24, 36165), (38, 36435), (42, 36498),

Gene: Martha_47 Start: 36224, Stop: 36670, Start Num: 14

Candidate Starts for Martha_47:

(Start: 14 @36224 has 1 MA's), (Start: 16 @36329 has 12 MA's), (20, 36377), (26, 36503),

Gene: NathanVaag_45 Start: 35939, Stop: 36430, Start Num: 17

Candidate Starts for NathanVaag_45:

(5, 35687), (6, 35693), (7, 35699), (13, 35801), (15, 35840), (Start: 16 @35936 has 12 MA's), (Start: 17 @35939 has 2 MA's), (18, 35960), (19, 35981), (32, 36278), (38, 36347), (40, 36371), (42, 36410),

Gene: Piccoletto_45 Start: 36083, Stop: 36493, Start Num: 16

Candidate Starts for Piccoletto_45:

(Start: 16 @36083 has 12 MA's), (Start: 17 @36086 has 2 MA's), (18, 36107), (19, 36128),

Gene: Shade_47 Start: 36112, Stop: 36564, Start Num: 16

Candidate Starts for Shade_47:

(3, 35812), (8, 35881), (Start: 16 @36112 has 12 MA's), (25, 36271), (31, 36418), (35, 36454),

Gene: Sonny_47 Start: 36253, Stop: 36651, Start Num: 16

Candidate Starts for Sonny_47:

(9, 36037), (Start: 16 @36253 has 12 MA's), (25, 36412), (35, 36541),

Gene: TaeYoung_48 Start: 36284, Stop: 36625, Start Num: 16

Candidate Starts for TaeYoung_48:

(Start: 14 @36179 has 1 MA's), (Start: 16 @36284 has 12 MA's), (20, 36332), (26, 36458),