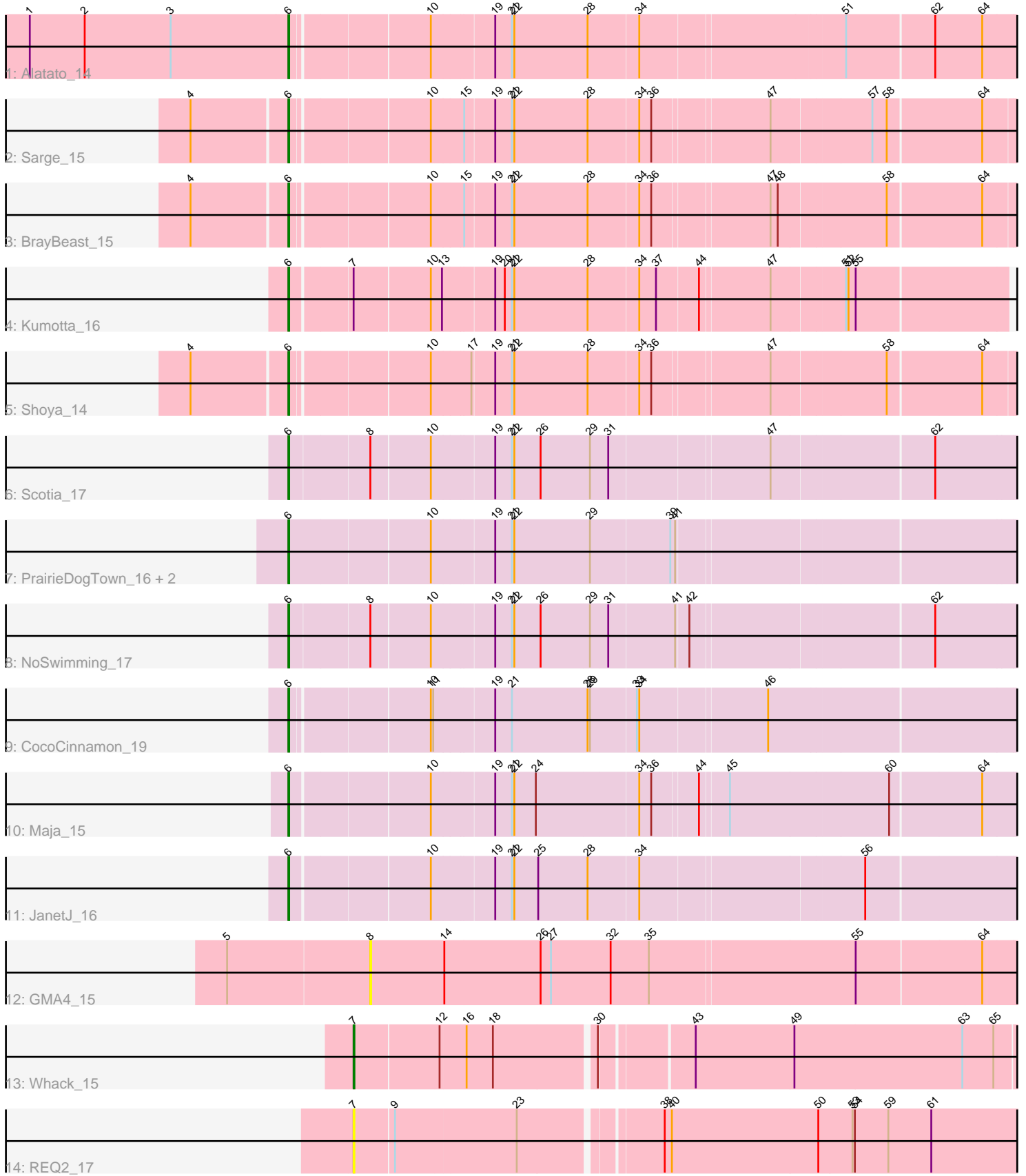


Pham 297050



Note: Tracks are now grouped by subcluster and scaled. Switching in subcluster is indicated by changes in track color. Track scale is now set by default to display the region 30 bp upstream of start 1 to 30 bp downstream of the last possible start. If this default region is judged to be packed too tightly with annotated starts, the track will be further scaled to only show that region of the ORF with annotated starts. This action will be indicated by adding "Zoomed" to the title. For starts, yellow indicates the location of called starts comprised solely of Glimmer/GeneMark auto-annotations, green indicates the location of called starts with at least 1 manual gene annotation.

Pham 297050 Report

This analysis was run 04/25/26 on database version 644.

Pham number 297050 has 16 members, 2 are drafts.

Phages represented in each track:

- Track 1 : Alatato_14
- Track 2 : Sarge_15
- Track 3 : BrayBeast_15
- Track 4 : Kumotta_16
- Track 5 : Shoya_14
- Track 6 : Scotia_17
- Track 7 : PrairieDogTown_16, Aoka_16, EvenBluerMoon_16
- Track 8 : NoSwimming_17
- Track 9 : CocoCinnamon_19
- Track 10 : Maja_15
- Track 11 : JanetJ_16
- Track 12 : GMA4_15
- Track 13 : Whack_15
- Track 14 : REQ2_17

Summary of Final Annotations (See graph section above for start numbers):

The start number called the most often in the published annotations is 6, it was called in 13 of the 14 non-draft genes in the pham.

Genes that call this "Most Annotated" start:

- Alatato_14, Aoka_16, BrayBeast_15, CocoCinnamon_19, EvenBluerMoon_16, JanetJ_16, Kumotta_16, Maja_15, NoSwimming_17, PrairieDogTown_16, Sarge_15, Scotia_17, Shoya_14,

Genes that have the "Most Annotated" start but do not call it:

-

Genes that do not have the "Most Annotated" start:

- GMA4_15, REQ2_17, Whack_15,

Summary by start number:

Start 6:

- Found in 13 of 16 (81.2%) of genes in pham
- Manual Annotations of this start: 13 of 14
- Called 100.0% of time when present
- Phage (with cluster) where this start called: Alata_14 (FB), Aoka_16 (FO), BrayBeast_15 (FB), CocoCinnamon_19 (FO), EvenBluerMoon_16 (FO), JanetJ_16 (FO), Kumotta_16 (FB), Maja_15 (FO), NoSwimming_17 (FO), PrairieDogTown_16 (FO), Sarge_15 (FB), Scotia_17 (FO), Shoya_14 (FB),

Start 7:

- Found in 3 of 16 (18.8%) of genes in pham
- Manual Annotations of this start: 1 of 14
- Called 66.7% of time when present
- Phage (with cluster) where this start called: REQ2_17 (singleton), Whack_15 (singleton),

Start 8:

- Found in 3 of 16 (18.8%) of genes in pham
- No Manual Annotations of this start.
- Called 33.3% of time when present
- Phage (with cluster) where this start called: GMA4_15 (singleton),

Summary by clusters:

There are 3 clusters represented in this pham: FB, singleton, FO,

Info for manual annotations of cluster FB:

- Start number 6 was manually annotated 5 times for cluster FB.

Info for manual annotations of cluster FO:

- Start number 6 was manually annotated 8 times for cluster FO.

Gene Information:

Gene: Alata_14 Start: 8514, Stop: 9367, Start Num: 6

Candidate Starts for Alata_14:

(1, 8190), (2, 8259), (3, 8367), (Start: 6 @8514 has 13 MA's), (10, 8676), (19, 8748), (21, 8769), (22, 8772), (28, 8862), (34, 8922), (51, 9165), (62, 9270), (64, 9327),

Gene: Aoka_16 Start: 10072, Stop: 10934, Start Num: 6

Candidate Starts for Aoka_16:

(Start: 6 @10072 has 13 MA's), (10, 10243), (19, 10315), (21, 10336), (22, 10339), (29, 10432), (39, 10528), (41, 10534),

Gene: BrayBeast_15 Start: 8914, Stop: 9761, Start Num: 6

Candidate Starts for BrayBeast_15:

(4, 8797), (Start: 6 @8914 has 13 MA's), (10, 9076), (15, 9112), (19, 9148), (21, 9169), (22, 9172), (28, 9262), (34, 9322), (36, 9337), (47, 9475), (48, 9484), (58, 9613), (64, 9724),

Gene: CocoCinnamon_19 Start: 10261, Stop: 11117, Start Num: 6

Candidate Starts for CocoCinnamon_19:

(Start: 6 @10261 has 13 MA's), (10, 10423), (11, 10426), (19, 10495), (21, 10516), (28, 10609), (29, 10612), (33, 10666), (34, 10669), (46, 10822),

Gene: EvenBluerMoon_16 Start: 10107, Stop: 10969, Start Num: 6

Candidate Starts for EvenBluerMoon_16:

(Start: 6 @10107 has 13 MA's), (10, 10278), (19, 10350), (21, 10371), (22, 10374), (29, 10467), (39, 10563), (41, 10569),

Gene: GMA4_15 Start: 9946, Stop: 10748, Start Num: 8

Candidate Starts for GMA4_15:

(5, 9769), (8, 9946), (14, 10039), (26, 10159), (27, 10171), (32, 10246), (35, 10294), (55, 10546), (64, 10699),

Gene: JanetJ_16 Start: 9891, Stop: 10747, Start Num: 6

Candidate Starts for JanetJ_16:

(Start: 6 @9891 has 13 MA's), (10, 10056), (19, 10128), (21, 10149), (22, 10152), (25, 10182), (28, 10242), (34, 10302), (56, 10569),

Gene: Kumotta_16 Start: 9768, Stop: 10615, Start Num: 6

Candidate Starts for Kumotta_16:

(Start: 6 @9768 has 13 MA's), (Start: 7 @9840 has 1 MA's), (10, 9933), (13, 9945), (19, 10005), (20, 10017), (21, 10026), (22, 10029), (28, 10119), (34, 10179), (37, 10200), (44, 10251), (47, 10335), (51, 10422), (52, 10425), (55, 10434),

Gene: Maja_15 Start: 9389, Stop: 10245, Start Num: 6

Candidate Starts for Maja_15:

(Start: 6 @9389 has 13 MA's), (10, 9554), (19, 9626), (21, 9647), (22, 9650), (24, 9677), (34, 9800), (36, 9815), (44, 9869), (45, 9902), (60, 10097), (64, 10205),

Gene: NoSwimming_17 Start: 11047, Stop: 11906, Start Num: 6

Candidate Starts for NoSwimming_17:

(Start: 6 @11047 has 13 MA's), (8, 11143), (10, 11215), (19, 11287), (21, 11308), (22, 11311), (26, 11344), (29, 11404), (31, 11425), (41, 11506), (42, 11521), (62, 11809),

Gene: PrairieDogTown_16 Start: 10109, Stop: 10971, Start Num: 6

Candidate Starts for PrairieDogTown_16:

(Start: 6 @10109 has 13 MA's), (10, 10280), (19, 10352), (21, 10373), (22, 10376), (29, 10469), (39, 10565), (41, 10571),

Gene: REQ2_17 Start: 11626, Stop: 12441, Start Num: 7

Candidate Starts for REQ2_17:

(Start: 7 @11626 has 1 MA's), (9, 11674), (23, 11821), (38, 11983), (40, 11992), (50, 12175), (53, 12217), (54, 12220), (59, 12262), (61, 12316),

Gene: Sarge_15 Start: 8825, Stop: 9672, Start Num: 6

Candidate Starts for Sarge_15:

(4, 8708), (Start: 6 @8825 has 13 MA's), (10, 8987), (15, 9023), (19, 9059), (21, 9080), (22, 9083), (28, 9173), (34, 9233), (36, 9248), (47, 9386), (57, 9506), (58, 9524), (64, 9635),

Gene: Scotia_17 Start: 11047, Stop: 11906, Start Num: 6

Candidate Starts for Scotia_17:

(Start: 6 @11047 has 13 MA's), (8, 11143), (10, 11215), (19, 11287), (21, 11308), (22, 11311), (26, 11344), (29, 11404), (31, 11425), (47, 11617), (62, 11809),

Gene: Shoya_14 Start: 8461, Stop: 9308, Start Num: 6

Candidate Starts for Shoya_14:

(4, 8344), (Start: 6 @8461 has 13 MA's), (10, 8623), (17, 8668), (19, 8695), (21, 8716), (22, 8719), (28, 8809), (34, 8869), (36, 8884), (47, 9022), (58, 9160), (64, 9271),

Gene: Whack_15 Start: 9533, Stop: 10330, Start Num: 7

Candidate Starts for Whack_15:

(Start: 7 @9533 has 1 MA's), (12, 9635), (16, 9665), (18, 9698), (30, 9818), (43, 9923), (49, 10046), (63, 10256), (65, 10295),