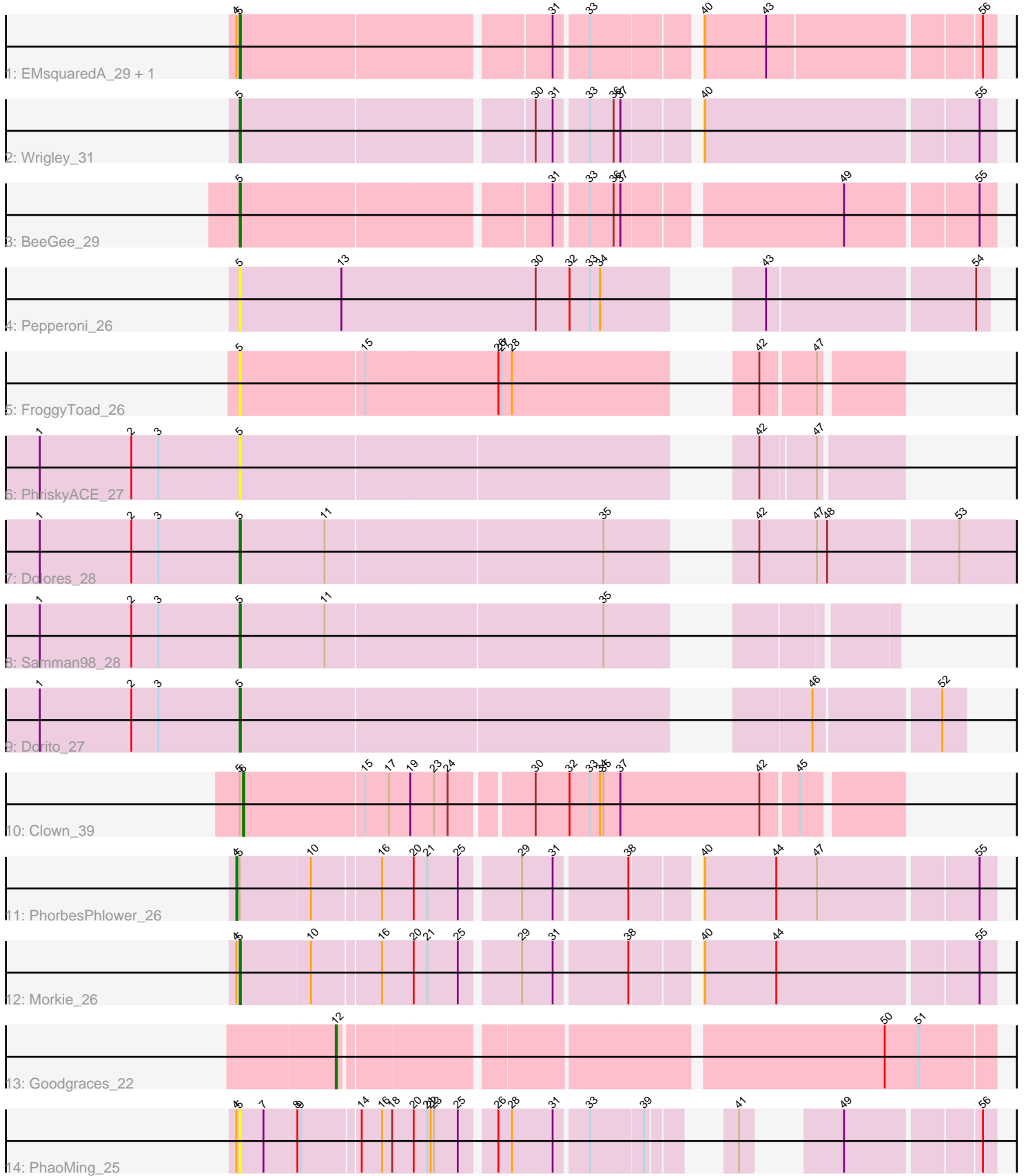


Pham 297062



Note: Tracks are now grouped by subcluster and scaled. Switching in subcluster is indicated by changes in track color. Track scale is now set by default to display the region 30 bp upstream of start 1 to 30 bp downstream of the last possible start. If this default region is judged to be packed too tightly with annotated starts, the track will be further scaled to only show that region of the ORF with annotated starts. This action will be indicated by adding "Zoomed" to the title. For starts, yellow indicates the location of called starts comprised solely of Glimmer/GeneMark auto-annotations, green indicates the location of called starts with at least 1 manual gene annotation.

Pham 297062 Report

This analysis was run 04/25/26 on database version 644.

Pham number 297062 has 15 members, 4 are drafts.

Phages represented in each track:

- Track 1 : EMsquaredA_29, Marteena_29
- Track 2 : Wrigley_31
- Track 3 : BeeGee_29
- Track 4 : Pepperoni_26
- Track 5 : FroggyToad_26
- Track 6 : PhriskyACE_27
- Track 7 : Dolores_28
- Track 8 : Samman98_28
- Track 9 : Dorito_27
- Track 10 : Clown_39
- Track 11 : PhorbesPhlower_26
- Track 12 : Morkie_26
- Track 13 : Goodgraces_22
- Track 14 : PhaoMing_25

Summary of Final Annotations (See graph section above for start numbers):

The start number called the most often in the published annotations is 5, it was called in 8 of the 11 non-draft genes in the pham.

Genes that call this "Most Annotated" start:

- BeeGee_29, Dolores_28, Dorito_27, EMsquaredA_29, FroggyToad_26, Marteena_29, Morkie_26, Pepperoni_26, PhaoMing_25, PhriskyACE_27, Samman98_28, Wrigley_31,

Genes that have the "Most Annotated" start but do not call it:

- Clown_39, PhorbesPhlower_26,

Genes that do not have the "Most Annotated" start:

- Goodgraces_22,

Summary by start number:

Start 4:

- Found in 5 of 15 (33.3%) of genes in pham
- Manual Annotations of this start: 1 of 11
- Called 20.0% of time when present
- Phage (with cluster) where this start called: PhorbesPhlower_26 (DH),

Start 5:

- Found in 14 of 15 (93.3%) of genes in pham
- Manual Annotations of this start: 8 of 11
- Called 85.7% of time when present
- Phage (with cluster) where this start called: BeeGee_29 (CY5), Dolores_28 (CZ4), Dorito_27 (CZ4), EMsquaredA_29 (CY1), FroggyToad_26 (CZ2), Marteena_29 (CY1), Morkie_26 (DH), Pepperoni_26 (CZ), PhaoMing_25 (UNK), PhriskyACE_27 (CZ4), Samman98_28 (CZ4), Wrigley_31 (CY4),

Start 6:

- Found in 1 of 15 (6.7%) of genes in pham
- Manual Annotations of this start: 1 of 11
- Called 100.0% of time when present
- Phage (with cluster) where this start called: Clown_39 (DC2),

Start 12:

- Found in 1 of 15 (6.7%) of genes in pham
- Manual Annotations of this start: 1 of 11
- Called 100.0% of time when present
- Phage (with cluster) where this start called: Goodgraces_22 (FD),

Summary by clusters:

There are 10 clusters represented in this pham: CY1, DH, CY5, CY4, CZ2, CZ4, CZ, FD, UNK, DC2,

Info for manual annotations of cluster CY1:

- Start number 5 was manually annotated 2 times for cluster CY1.

Info for manual annotations of cluster CY4:

- Start number 5 was manually annotated 1 time for cluster CY4.

Info for manual annotations of cluster CY5:

- Start number 5 was manually annotated 1 time for cluster CY5.

Info for manual annotations of cluster CZ4:

- Start number 5 was manually annotated 3 times for cluster CZ4.

Info for manual annotations of cluster DC2:

- Start number 6 was manually annotated 1 time for cluster DC2.

Info for manual annotations of cluster DH:

- Start number 4 was manually annotated 1 time for cluster DH.
- Start number 5 was manually annotated 1 time for cluster DH.

Info for manual annotations of cluster FD:

- Start number 12 was manually annotated 1 time for cluster FD.

Gene Information:

Gene: BeeGee_29 Start: 24605, Stop: 25225, Start Num: 5

Candidate Starts for BeeGee_29:

(Start: 5 @24605 has 8 MA's), (31, 24866), (33, 24893), (36, 24914), (37, 24920), (49, 25100), (55, 25211),

Gene: Clown_39 Start: 32425, Stop: 32979, Start Num: 6

Candidate Starts for Clown_39:

(Start: 5 @32422 has 8 MA's), (Start: 6 @32425 has 1 MA's), (15, 32530), (17, 32551), (19, 32569), (23, 32590), (24, 32602), (30, 32668), (32, 32698), (33, 32716), (34, 32725), (35, 32728), (37, 32743), (42, 32866), (45, 32896),

Gene: Dolores_28 Start: 23280, Stop: 24047, Start Num: 5

Candidate Starts for Dolores_28:

(1, 23103), (2, 23184), (3, 23208), (Start: 5 @23280 has 8 MA's), (11, 23355), (35, 23595), (42, 23676), (47, 23727), (48, 23736), (53, 23847),

Gene: Dorito_27 Start: 22746, Stop: 23312, Start Num: 5

Candidate Starts for Dorito_27:

(1, 22569), (2, 22650), (3, 22674), (Start: 5 @22746 has 8 MA's), (46, 23187), (52, 23292),

Gene: EMSquaredA_29 Start: 24575, Stop: 25189, Start Num: 5

Candidate Starts for EMSquaredA_29:

(Start: 4 @24572 has 1 MA's), (Start: 5 @24575 has 8 MA's), (31, 24836), (33, 24863), (40, 24947), (43, 25001), (56, 25178),

Gene: FroggyToad_26 Start: 22192, Stop: 22704, Start Num: 5

Candidate Starts for FroggyToad_26:

(Start: 5 @22192 has 8 MA's), (15, 22300), (26, 22417), (27, 22420), (28, 22429), (42, 22591), (47, 22636),

Gene: Goodgraces_22 Start: 16580, Stop: 17119, Start Num: 12

Candidate Starts for Goodgraces_22:

(Start: 12 @16580 has 1 MA's), (50, 17024), (51, 17054),

Gene: Marteena_29 Start: 24575, Stop: 25189, Start Num: 5

Candidate Starts for Marteena_29:

(Start: 4 @24572 has 1 MA's), (Start: 5 @24575 has 8 MA's), (31, 24836), (33, 24863), (40, 24947), (43, 25001), (56, 25178),

Gene: Morkie_26 Start: 21978, Stop: 22595, Start Num: 5

Candidate Starts for Morkie_26:

(Start: 4 @21975 has 1 MA's), (Start: 5 @21978 has 8 MA's), (10, 22038), (16, 22095), (20, 22122), (21, 22134), (25, 22161), (29, 22209), (31, 22236), (38, 22296), (40, 22347), (44, 22410), (55, 22581),

Gene: Pepperoni_26 Start: 21851, Stop: 22447, Start Num: 5

Candidate Starts for Pepperoni_26:

(Start: 5 @21851 has 8 MA's), (13, 21941), (30, 22112), (32, 22142), (33, 22160), (34, 22169), (43, 22259), (54, 22436),

Gene: PhaoMing_25 Start: 23308, Stop: 23850, Start Num: 5

Candidate Starts for PhaoMing_25:

(Start: 4 @23305 has 1 MA's), (Start: 5 @23308 has 8 MA's), (7, 23329), (8, 23356), (9, 23359), (14, 23407), (16, 23425), (18, 23434), (20, 23452), (21, 23464), (22, 23467), (23, 23470), (25, 23491), (26, 23518), (28, 23530), (31, 23566), (33, 23593), (39, 23638), (41, 23680), (49, 23728), (56, 23839),

Gene: PhorbesPhlower_26 Start: 21975, Stop: 22595, Start Num: 4

Candidate Starts for PhorbesPhlower_26:

(Start: 4 @21975 has 1 MA's), (Start: 5 @21978 has 8 MA's), (10, 22038), (16, 22095), (20, 22122), (21, 22134), (25, 22161), (29, 22209), (31, 22236), (38, 22296), (40, 22347), (44, 22410), (47, 22446), (55, 22581),

Gene: PhriskyACE_27 Start: 22746, Stop: 23258, Start Num: 5

Candidate Starts for PhriskyACE_27:

(1, 22569), (2, 22650), (3, 22674), (Start: 5 @22746 has 8 MA's), (42, 23142), (47, 23187),

Gene: Samman98_28 Start: 23298, Stop: 23804, Start Num: 5

Candidate Starts for Samman98_28:

(1, 23121), (2, 23202), (3, 23226), (Start: 5 @23298 has 8 MA's), (11, 23373), (35, 23613),

Gene: Wrigley_31 Start: 25497, Stop: 26117, Start Num: 5

Candidate Starts for Wrigley_31:

(Start: 5 @25497 has 8 MA's), (30, 25743), (31, 25758), (33, 25785), (36, 25806), (37, 25812), (40, 25869), (55, 26103),