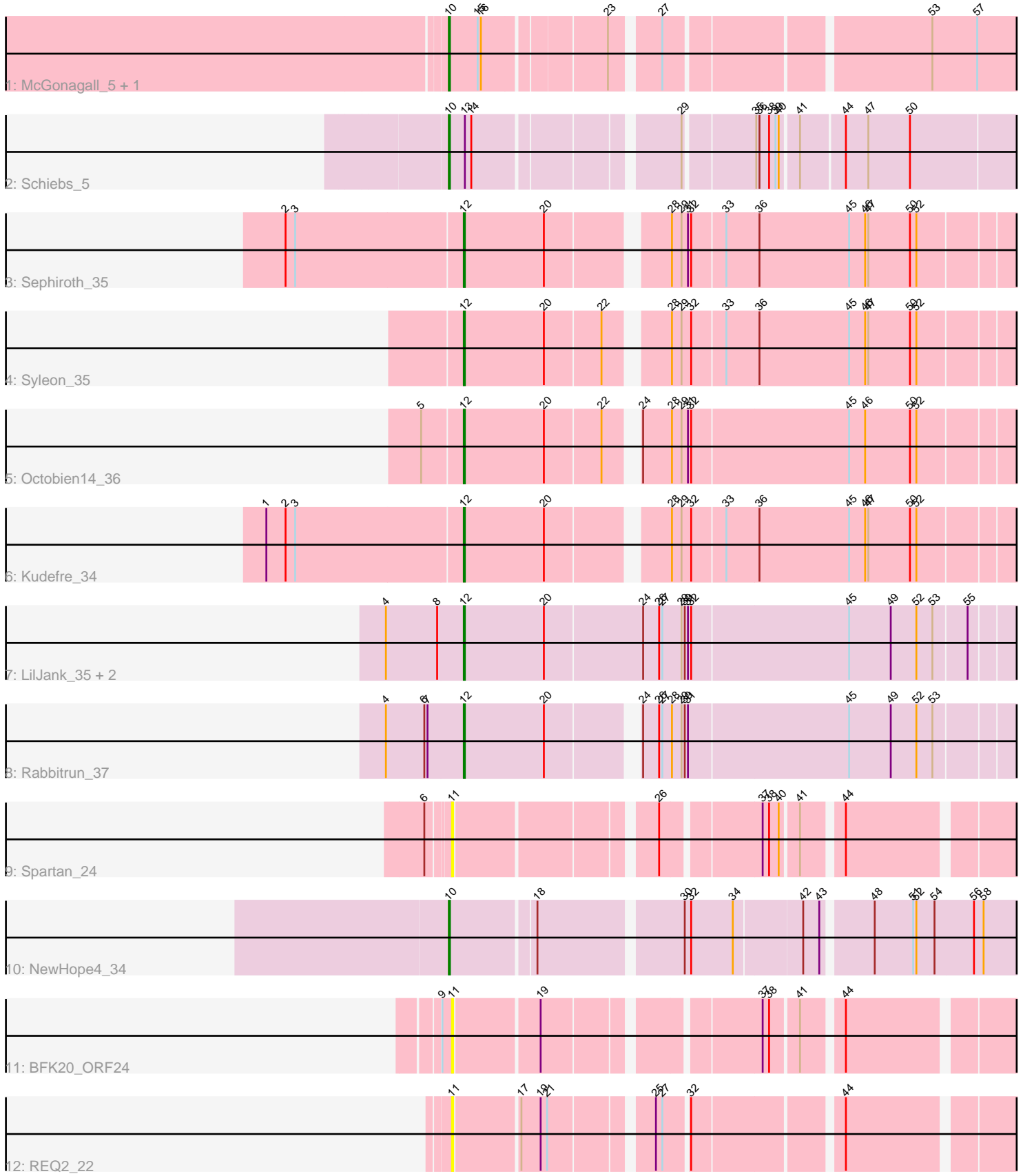


Zoomed Pham 297063



Note: Tracks are now grouped by subcluster and scaled. Switching in subcluster is indicated by changes in track color. Track scale is now set by default to display the region 30 bp upstream of start 1 to 30 bp downstream of the last possible start. If this default region is judged to be packed too tightly with annotated starts, the track will be further scaled to only show that region of the ORF with annotated starts. This action will be indicated by adding "Zoomed" to the title. For starts, yellow indicates the location of called starts comprised solely of Glimmer/GeneMark auto-annotations, green indicates the location of called starts with at least 1 manual gene annotation.

Pham 297063 Report

This analysis was run 04/25/26 on database version 644.

Pham number 297063 has 15 members, 4 are drafts.

Phages represented in each track:

- Track 1 : McGonagall_5, Jeanie_5
- Track 2 : Schiebs_5
- Track 3 : Sephiroth_35
- Track 4 : Syleon_35
- Track 5 : Octobien14_36
- Track 6 : Kudrefre_34
- Track 7 : LilJank_35, Neville_35, Trax_35
- Track 8 : Rabbitrun_37
- Track 9 : Spartan_24
- Track 10 : NewHope4_34
- Track 11 : BFK20_ORF24
- Track 12 : REQ2_22

Summary of Final Annotations (See graph section above for start numbers):

The start number called the most often in the published annotations is 12, it was called in 7 of the 11 non-draft genes in the pham.

Genes that call this "Most Annotated" start:

- Kudrefre_34, LilJank_35, Neville_35, Octobien14_36, Rabbitrun_37, Sephiroth_35, Syleon_35, Trax_35,

Genes that have the "Most Annotated" start but do not call it:

-

Genes that do not have the "Most Annotated" start:

- BFK20_ORF24, Jeanie_5, McGonagall_5, NewHope4_34, REQ2_22, Schiebs_5, Spartan_24,

Summary by start number:

Start 10:

- Found in 4 of 15 (26.7%) of genes in pham
- Manual Annotations of this start: 4 of 11

- Called 100.0% of time when present
- Phage (with cluster) where this start called: Jeanie_5 (CW1), McGonagall_5 (CW1), NewHope4_34 (F1), Schiebs_5 (CW3),

Start 11:

- Found in 3 of 15 (20.0%) of genes in pham
- No Manual Annotations of this start.
- Called 100.0% of time when present
- Phage (with cluster) where this start called: BFK20_ORF24 (singleton), REQ2_22 (singleton), Spartan_24 (ES),

Start 12:

- Found in 8 of 15 (53.3%) of genes in pham
- Manual Annotations of this start: 7 of 11
- Called 100.0% of time when present
- Phage (with cluster) where this start called: Kudrefre_34 (DU1), LiJank_35 (DU2), Neville_35 (DU2), Octobien14_36 (DU1), Rabbitrun_37 (DU2), Sephiroth_35 (DU1), Syleon_35 (DU1), Trax_35 (DU2),

Summary by clusters:

There are 7 clusters represented in this pham: F1, singleton, CW1, CW3, DU1, DU2, ES,

Info for manual annotations of cluster CW1:

- Start number 10 was manually annotated 2 times for cluster CW1.

Info for manual annotations of cluster CW3:

- Start number 10 was manually annotated 1 time for cluster CW3.

Info for manual annotations of cluster DU1:

- Start number 12 was manually annotated 4 times for cluster DU1.

Info for manual annotations of cluster DU2:

- Start number 12 was manually annotated 3 times for cluster DU2.

Info for manual annotations of cluster F1:

- Start number 10 was manually annotated 1 time for cluster F1.

Gene Information:

Gene: BFK20_ORF24 Start: 20961, Stop: 21773, Start Num: 11

Candidate Starts for BFK20_ORF24:

(9, 20952), (11, 20961), (19, 21036), (37, 21213), (38, 21219), (41, 21243), (44, 21276), (59, 21441), (60, 21447), (70, 21525), (73, 21543), (78, 21579), (81, 21600), (85, 21645), (86, 21648), (92, 21684),

Gene: Jeanie_5 Start: 3248, Stop: 3952, Start Num: 10

Candidate Starts for Jeanie_5:

(Start: 10 @3248 has 4 MA's), (15, 3275), (16, 3278), (23, 3383), (27, 3422), (53, 3650), (57, 3692), (62, 3755), (64, 3764), (68, 3809),

Gene: Kudrefre_34 Start: 28912, Stop: 29727, Start Num: 12

Candidate Starts for Kudrefre_34:

(1, 28732), (2, 28750), (3, 28759), (Start: 12 @28912 has 7 MA's), (20, 28987), (28, 29086), (29, 29095), (32, 29104), (33, 29134), (36, 29164), (45, 29248), (46, 29263), (47, 29266), (50, 29305), (52, 29311), (65, 29464), (72, 29518), (88, 29638), (90, 29659), (93, 29668), (94, 29671), (95, 29689), (98, 29710),

Gene: LilJank_35 Start: 30561, Stop: 31391, Start Num: 12

Candidate Starts for LilJank_35:

(4, 30489), (8, 30537), (Start: 12 @30561 has 7 MA's), (20, 30636), (24, 30726), (26, 30741), (27, 30744), (29, 30762), (30, 30765), (31, 30768), (32, 30771), (45, 30915), (49, 30954), (52, 30978), (53, 30993), (55, 31023), (65, 31131), (71, 31173), (77, 31215), (82, 31260), (87, 31296), (89, 31314), (91, 31329), (95, 31356), (96, 31368), (98, 31377),

Gene: McGonagall_5 Start: 3248, Stop: 3952, Start Num: 10

Candidate Starts for McGonagall_5:

(Start: 10 @3248 has 4 MA's), (15, 3275), (16, 3278), (23, 3383), (27, 3422), (53, 3650), (57, 3692), (62, 3755), (64, 3764), (68, 3809),

Gene: Neville_35 Start: 30201, Stop: 31031, Start Num: 12

Candidate Starts for Neville_35:

(4, 30129), (8, 30177), (Start: 12 @30201 has 7 MA's), (20, 30276), (24, 30366), (26, 30381), (27, 30384), (29, 30402), (30, 30405), (31, 30408), (32, 30411), (45, 30555), (49, 30594), (52, 30618), (53, 30633), (55, 30663), (65, 30771), (71, 30813), (77, 30855), (82, 30900), (87, 30936), (89, 30954), (91, 30969), (95, 30996), (96, 31008), (98, 31017),

Gene: NewHope4_34 Start: 27564, Stop: 28340, Start Num: 10

Candidate Starts for NewHope4_34:

(Start: 10 @27564 has 4 MA's), (18, 27639), (30, 27765), (32, 27771), (34, 27810), (42, 27870), (43, 27885), (48, 27927), (51, 27963), (52, 27966), (54, 27981), (56, 28017), (58, 28026), (67, 28140), (83, 28251),

Gene: Octobien14_36 Start: 29599, Stop: 30414, Start Num: 12

Candidate Starts for Octobien14_36:

(5, 29563), (Start: 12 @29599 has 7 MA's), (20, 29674), (22, 29725), (24, 29746), (28, 29773), (29, 29782), (31, 29788), (32, 29791), (45, 29935), (46, 29950), (50, 29992), (52, 29998), (65, 30151), (72, 30205), (88, 30325), (90, 30346), (93, 30355), (94, 30358), (95, 30376), (98, 30397),

Gene: REQ2_22 Start: 21035, Stop: 21745, Start Num: 11

Candidate Starts for REQ2_22:

(11, 21035), (17, 21092), (19, 21110), (21, 21116), (25, 21200), (27, 21206), (32, 21227), (44, 21353), (59, 21518), (61, 21530), (62, 21533), (66, 21575), (75, 21629),

Gene: Rabbitrun_37 Start: 30662, Stop: 31474, Start Num: 12

Candidate Starts for Rabbitrun_37:

(4, 30590), (6, 30626), (7, 30629), (Start: 12 @30662 has 7 MA's), (20, 30737), (24, 30809), (26, 30824), (27, 30827), (28, 30836), (29, 30845), (30, 30848), (31, 30851), (45, 30998), (49, 31037), (52, 31061), (53, 31076), (65, 31214), (71, 31256), (77, 31298), (82, 31343), (87, 31379), (89, 31397), (90, 31409), (95, 31439), (96, 31451), (98, 31460),

Gene: Schiebs_5 Start: 3081, Stop: 3797, Start Num: 10

Candidate Starts for Schiebs_5:

(Start: 10 @3081 has 4 MA's), (13, 3096), (14, 3102), (29, 3273), (35, 3333), (36, 3336), (38, 3345), (39, 3351), (40, 3354), (41, 3369), (44, 3408), (47, 3429), (50, 3468), (63, 3600), (69, 3657), (74, 3678), (84, 3762),

Gene: Sephiroth_35 Start: 29083, Stop: 29898, Start Num: 12

Candidate Starts for Sephiroth_35:

(2, 28921), (3, 28930), (Start: 12 @29083 has 7 MA's), (20, 29158), (28, 29257), (29, 29266), (31, 29272), (32, 29275), (33, 29305), (36, 29335), (45, 29419), (46, 29434), (47, 29437), (50, 29476), (52, 29482), (65, 29635), (72, 29689), (88, 29809), (90, 29830), (93, 29839), (94, 29842), (95, 29860), (98, 29881),

Gene: Spartan_24 Start: 23454, Stop: 24254, Start Num: 11

Candidate Starts for Spartan_24:

(6, 23436), (11, 23454), (26, 23622), (37, 23706), (38, 23712), (40, 23721), (41, 23736), (44, 23769), (70, 24006), (76, 24039), (79, 24069), (80, 24072), (81, 24081), (86, 24129), (92, 24165), (97, 24210),

Gene: Syleon_35 Start: 29005, Stop: 29820, Start Num: 12

Candidate Starts for Syleon_35:

(Start: 12 @29005 has 7 MA's), (20, 29080), (22, 29131), (28, 29179), (29, 29188), (32, 29197), (33, 29227), (36, 29257), (45, 29341), (46, 29356), (47, 29359), (50, 29398), (52, 29404), (65, 29557), (72, 29611), (88, 29731), (90, 29752), (93, 29761), (94, 29764), (95, 29782), (98, 29803),

Gene: Trax_35 Start: 30507, Stop: 31337, Start Num: 12

Candidate Starts for Trax_35:

(4, 30435), (8, 30483), (Start: 12 @30507 has 7 MA's), (20, 30582), (24, 30672), (26, 30687), (27, 30690), (29, 30708), (30, 30711), (31, 30714), (32, 30717), (45, 30861), (49, 30900), (52, 30924), (53, 30939), (55, 30969), (65, 31077), (71, 31119), (77, 31161), (82, 31206), (87, 31242), (89, 31260), (91, 31275), (95, 31302), (96, 31314), (98, 31323),