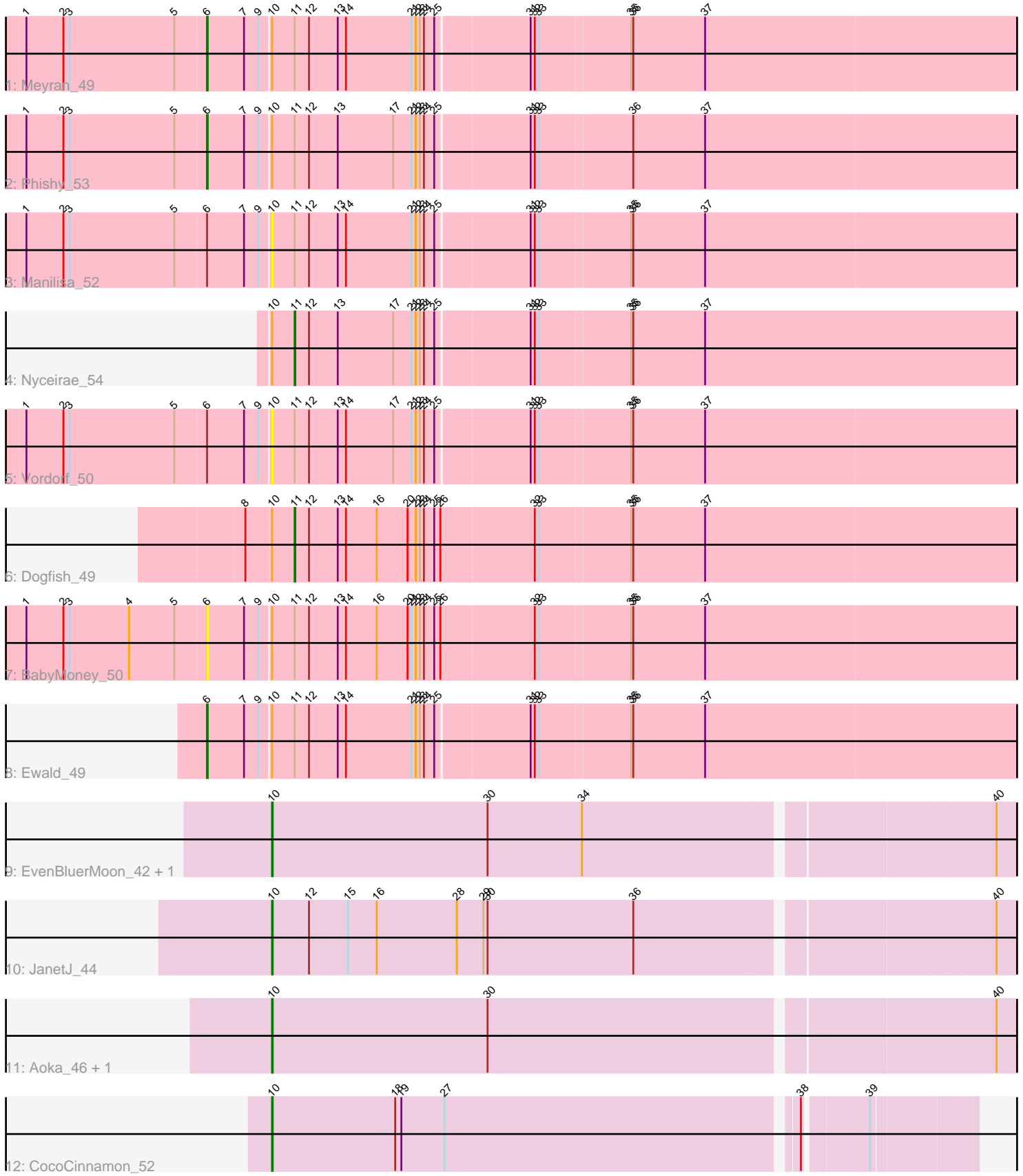


Pham 297089



Note: Tracks are now grouped by subcluster and scaled. Switching in subcluster is indicated by changes in track color. Track scale is now set by default to display the region 30 bp upstream of start 1 to 30 bp downstream of the last possible start. If this default region is judged to be packed too tightly with annotated starts, the track will be further scaled to only show that region of the ORF with annotated starts. This action will be indicated by adding "Zoomed" to the title. For starts, yellow indicates the location of called starts comprised solely of Glimmer/GeneMark auto-annotations, green indicates the location of called starts with at least 1 manual gene annotation.

Pham 297089 Report

This analysis was run 04/25/26 on database version 644.

Pham number 297089 has 14 members, 4 are drafts.

Phages represented in each track:

- Track 1 : Meyran_49
- Track 2 : Phishy_53
- Track 3 : Manilisa_52
- Track 4 : Nyceirae_54
- Track 5 : Vordorf_50
- Track 6 : Dogfish_49
- Track 7 : BabyMoney_50
- Track 8 : Ewald_49
- Track 9 : EvenBluerMoon_42, PrairieDogTown_43
- Track 10 : JanetJ_44
- Track 11 : Aoka_46, Hereford_63
- Track 12 : CocoCinnamon_52

Summary of Final Annotations (See graph section above for start numbers):

The start number called the most often in the published annotations is 10, it was called in 5 of the 10 non-draft genes in the pham.

Genes that call this "Most Annotated" start:

- Aoka_46, CocoCinnamon_52, EvenBluerMoon_42, Hereford_63, JanetJ_44, Manilisa_52, PrairieDogTown_43, Vordorf_50,

Genes that have the "Most Annotated" start but do not call it:

- BabyMoney_50, Dogfish_49, Ewald_49, Meyran_49, Nyceirae_54, Phishy_53,

Genes that do not have the "Most Annotated" start:

-

Summary by start number:

Start 6:

- Found in 6 of 14 (42.9%) of genes in pham
- Manual Annotations of this start: 3 of 10
- Called 66.7% of time when present

- Phage (with cluster) where this start called: BabyMoney_50 (DT), Ewald_49 (DT), Meyran_49 (DT), Phishy_53 (DT),

Start 10:

- Found in 14 of 14 (100.0%) of genes in pham
- Manual Annotations of this start: 5 of 10
- Called 57.1% of time when present
- Phage (with cluster) where this start called: Aoka_46 (FO), CocoCinnamon_52 (FO), EvenBluerMoon_42 (FO), Hereford_63 (FO), JanetJ_44 (FO), Manilisa_52 (DT), PrairieDogTown_43 (FO), Vordorf_50 (DT),

Start 11:

- Found in 8 of 14 (57.1%) of genes in pham
- Manual Annotations of this start: 2 of 10
- Called 25.0% of time when present
- Phage (with cluster) where this start called: Dogfish_49 (DT), Nyceirae_54 (DT),

Summary by clusters:

There are 2 clusters represented in this pham: DT, FO,

Info for manual annotations of cluster DT:

- Start number 6 was manually annotated 3 times for cluster DT.
- Start number 11 was manually annotated 2 times for cluster DT.

Info for manual annotations of cluster FO:

- Start number 10 was manually annotated 5 times for cluster FO.

Gene Information:

Gene: Aoka_46 Start: 32046, Stop: 33164, Start Num: 10

Candidate Starts for Aoka_46:

(Start: 10 @32046 has 5 MA's), (30, 32361), (40, 33066),

Gene: BabyMoney_50 Start: 37319, Stop: 38551, Start Num: 6

Candidate Starts for BabyMoney_50:

(1, 37058), (2, 37112), (3, 37121), (4, 37208), (5, 37274), (Start: 6 @37319 has 3 MA's), (7, 37373), (9, 37394), (Start: 10 @37409 has 5 MA's), (Start: 11 @37442 has 2 MA's), (12, 37463), (13, 37505), (14, 37517), (16, 37562), (20, 37607), (21, 37613), (22, 37619), (23, 37625), (24, 37631), (25, 37646), (26, 37655), (32, 37787), (33, 37793), (35, 37922), (36, 37925), (37, 38030),

Gene: CocoCinnamon_52 Start: 32925, Stop: 33902, Start Num: 10

Candidate Starts for CocoCinnamon_52:

(Start: 10 @32925 has 5 MA's), (18, 33105), (19, 33114), (27, 33177), (38, 33675), (39, 33762),

Gene: Dogfish_49 Start: 36865, Stop: 37968, Start Num: 11

Candidate Starts for Dogfish_49:

(8, 36796), (Start: 10 @36832 has 5 MA's), (Start: 11 @36865 has 2 MA's), (12, 36886), (13, 36928), (14, 36940), (16, 36985), (20, 37030), (22, 37042), (23, 37048), (24, 37054), (25, 37069), (26, 37078), (32, 37210), (33, 37216), (35, 37345), (36, 37348), (37, 37453),

Gene: EvenBluerMoon_42 Start: 31418, Stop: 32536, Start Num: 10
Candidate Starts for EvenBluerMoon_42:
(Start: 10 @31418 has 5 MA's), (30, 31733), (34, 31871), (40, 32438),

Gene: Ewald_49 Start: 36559, Stop: 37788, Start Num: 6
Candidate Starts for Ewald_49:
(Start: 6 @36559 has 3 MA's), (7, 36613), (9, 36634), (Start: 10 @36649 has 5 MA's), (Start: 11 @36682 has 2 MA's), (12, 36703), (13, 36745), (14, 36757), (21, 36853), (22, 36859), (23, 36865), (24, 36871), (25, 36886), (31, 37018), (32, 37024), (33, 37030), (35, 37159), (36, 37162), (37, 37267),

Gene: Hereford_63 Start: 31162, Stop: 32280, Start Num: 10
Candidate Starts for Hereford_63:
(Start: 10 @31162 has 5 MA's), (30, 31477), (40, 32182),

Gene: JanetJ_44 Start: 32563, Stop: 33687, Start Num: 10
Candidate Starts for JanetJ_44:
(Start: 10 @32563 has 5 MA's), (12, 32617), (15, 32674), (16, 32716), (28, 32833), (29, 32872), (30, 32878), (36, 33091), (40, 33583),

Gene: Manilisa_52 Start: 37821, Stop: 38960, Start Num: 10
Candidate Starts for Manilisa_52:
(1, 37470), (2, 37524), (3, 37533), (5, 37686), (Start: 6 @37731 has 3 MA's), (7, 37785), (9, 37806), (Start: 10 @37821 has 5 MA's), (Start: 11 @37854 has 2 MA's), (12, 37875), (13, 37917), (14, 37929), (21, 38025), (22, 38031), (23, 38037), (24, 38043), (25, 38058), (31, 38190), (32, 38196), (33, 38202), (35, 38331), (36, 38334), (37, 38439),

Gene: Meyran_49 Start: 37660, Stop: 38889, Start Num: 6
Candidate Starts for Meyran_49:
(1, 37399), (2, 37453), (3, 37462), (5, 37615), (Start: 6 @37660 has 3 MA's), (7, 37714), (9, 37735), (Start: 10 @37750 has 5 MA's), (Start: 11 @37783 has 2 MA's), (12, 37804), (13, 37846), (14, 37858), (21, 37954), (22, 37960), (23, 37966), (24, 37972), (25, 37987), (31, 38119), (32, 38125), (33, 38131), (35, 38260), (36, 38263), (37, 38368),

Gene: Nyceirae_54 Start: 37807, Stop: 38916, Start Num: 11
Candidate Starts for Nyceirae_54:
(Start: 10 @37774 has 5 MA's), (Start: 11 @37807 has 2 MA's), (12, 37828), (13, 37870), (17, 37951), (21, 37978), (22, 37984), (23, 37990), (24, 37996), (25, 38011), (31, 38143), (32, 38149), (33, 38155), (35, 38284), (36, 38287), (37, 38392),

Gene: Phishy_53 Start: 38633, Stop: 39862, Start Num: 6
Candidate Starts for Phishy_53:
(1, 38372), (2, 38426), (3, 38435), (5, 38588), (Start: 6 @38633 has 3 MA's), (7, 38687), (9, 38708), (Start: 10 @38723 has 5 MA's), (Start: 11 @38756 has 2 MA's), (12, 38777), (13, 38819), (17, 38900), (21, 38927), (22, 38933), (23, 38939), (24, 38945), (25, 38960), (31, 39092), (32, 39098), (33, 39104), (36, 39236), (37, 39341),

Gene: PrairieDogTown_43 Start: 31420, Stop: 32538, Start Num: 10
Candidate Starts for PrairieDogTown_43:
(Start: 10 @31420 has 5 MA's), (30, 31735), (34, 31873), (40, 32440),

Gene: Vordorf_50 Start: 37013, Stop: 38146, Start Num: 10
Candidate Starts for Vordorf_50:

(1, 36662), (2, 36716), (3, 36725), (5, 36878), (Start: 6 @36923 has 3 MA's), (7, 36977), (9, 36998),
(Start: 10 @37013 has 5 MA's), (Start: 11 @37046 has 2 MA's), (12, 37067), (13, 37109), (14, 37121),
(17, 37190), (21, 37217), (22, 37223), (23, 37229), (24, 37235), (25, 37250), (31, 37382), (32, 37388),
(33, 37394), (35, 37523), (36, 37526), (37, 37631),