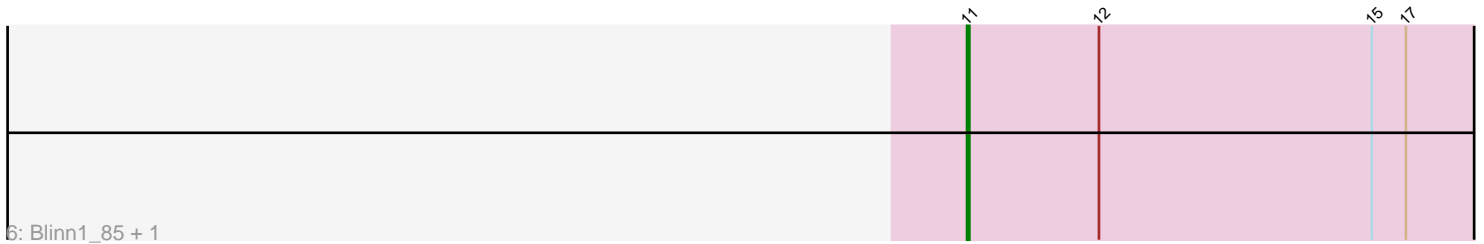
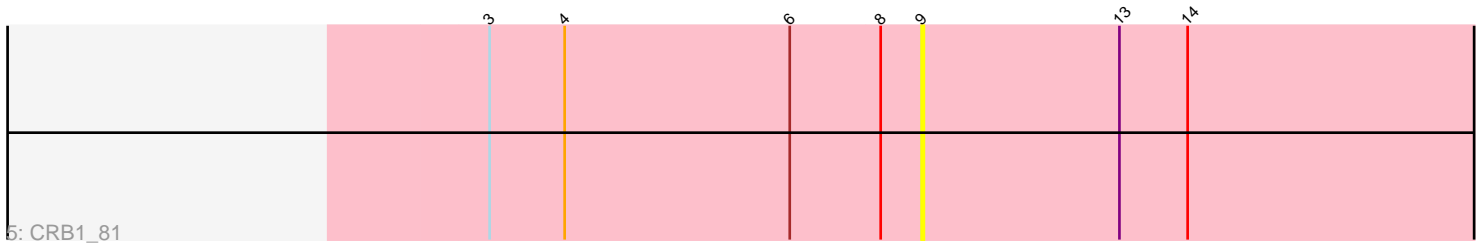
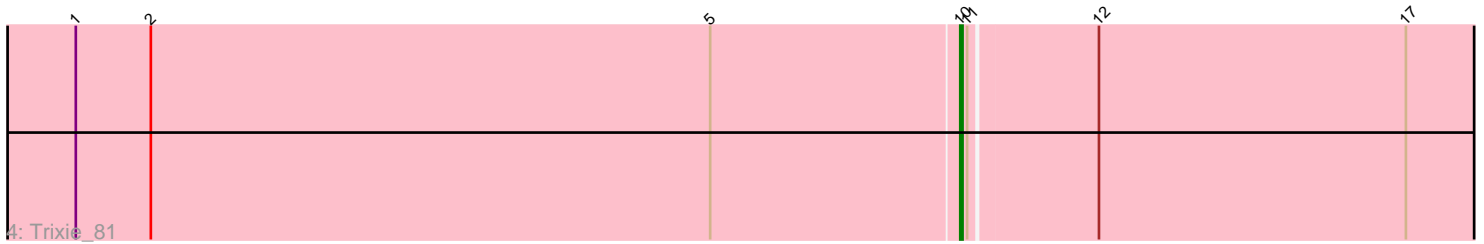
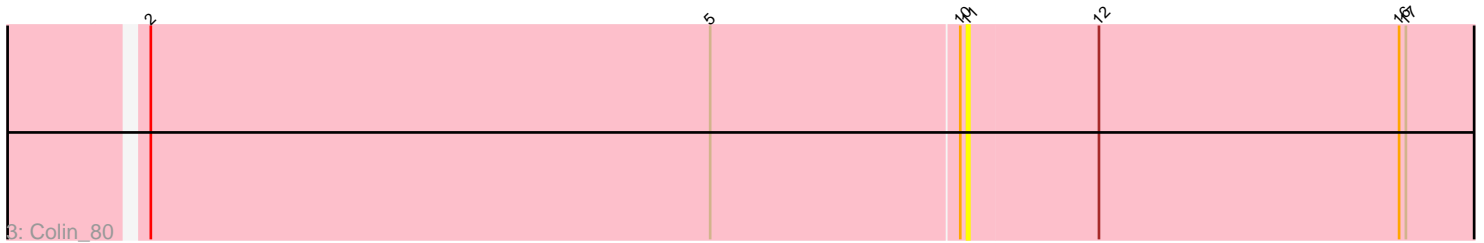
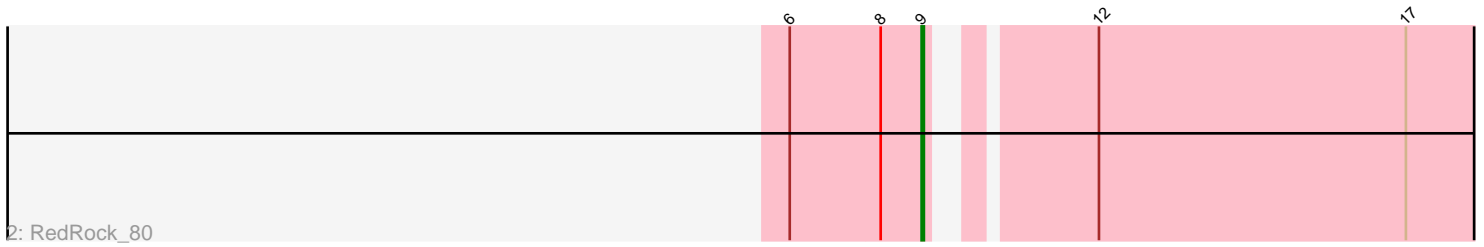
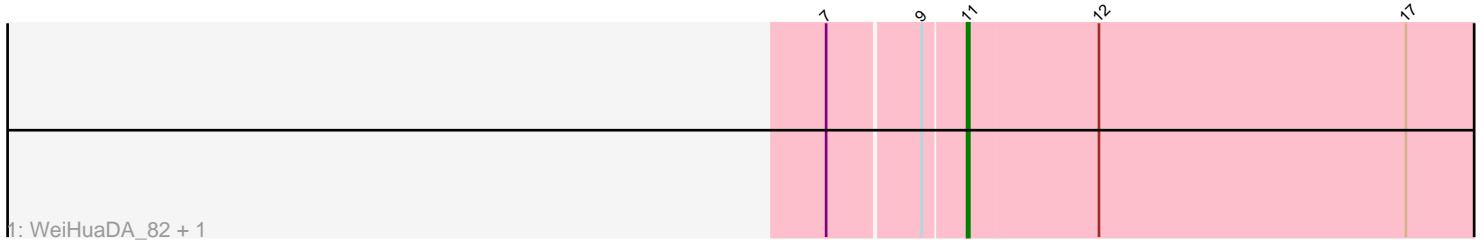


Pham 297291



Note: Tracks are now grouped by subcluster and scaled. Switching in subcluster is indicated by changes in track color. Track scale is now set by default to display the region 30 bp upstream of start 1 to 30 bp downstream of the last possible start. If this default region is judged to be packed too tightly with annotated starts, the track will be further scaled to only show that region of the ORF with annotated starts. This action will be indicated by adding "Zoomed" to the title. For starts, yellow indicates the location of called starts comprised solely of Glimmer/GeneMark auto-annotations, green indicates the location of called starts with at least 1 manual gene annotation.

Pham 297291 Report

This analysis was run 04/25/26 on database version 644.

Pham number 297291 has 8 members, 3 are drafts.

Phages represented in each track:

- Track 1 : WeiHuaDA_82, Kalpine_82
- Track 2 : RedRock_80
- Track 3 : Colin_80
- Track 4 : Trixie_81
- Track 5 : CRB1_81
- Track 6 : Blinn1_85, Priamo_83

Summary of Final Annotations (See graph section above for start numbers):

The start number called the most often in the published annotations is 11, it was called in 3 of the 5 non-draft genes in the pham.

Genes that call this "Most Annotated" start:

- Blinn1_85, Colin_80, Kalpine_82, Priamo_83, WeiHuaDA_82,

Genes that have the "Most Annotated" start but do not call it:

- Trixie_81,

Genes that do not have the "Most Annotated" start:

- CRB1_81, RedRock_80,

Summary by start number:

Start 9:

- Found in 4 of 8 (50.0%) of genes in pham
- Manual Annotations of this start: 1 of 5
- Called 50.0% of time when present
- Phage (with cluster) where this start called: CRB1_81 (A2), RedRock_80 (A2),

Start 10:

- Found in 2 of 8 (25.0%) of genes in pham
- Manual Annotations of this start: 1 of 5
- Called 50.0% of time when present
- Phage (with cluster) where this start called: Trixie_81 (A2),

Start 11:

- Found in 6 of 8 (75.0%) of genes in pham
- Manual Annotations of this start: 3 of 5
- Called 83.3% of time when present
- Phage (with cluster) where this start called: Blinn1_85 (A6), Colin_80 (A2), Kalpine_82 (A2), Priamo_83 (A6), WeiHuaDA_82 (A2),

Summary by clusters:

There are 2 clusters represented in this pham: A2, A6,

Info for manual annotations of cluster A2:

- Start number 9 was manually annotated 1 time for cluster A2.
- Start number 10 was manually annotated 1 time for cluster A2.
- Start number 11 was manually annotated 1 time for cluster A2.

Info for manual annotations of cluster A6:

- Start number 11 was manually annotated 2 times for cluster A6.

Gene Information:

Gene: Blinn1_85 Start: 46133, Stop: 45888, Start Num: 11

Candidate Starts for Blinn1_85:

(Start: 11 @46133 has 3 MA's), (12, 46076), (15, 45956), (17, 45941),

Gene: CRB1_81 Start: 47299, Stop: 47039, Start Num: 9

Candidate Starts for CRB1_81:

(3, 47488), (4, 47455), (6, 47356), (8, 47317), (Start: 9 @47299 has 1 MA's), (13, 47212), (14, 47182),

Gene: Colin_80 Start: 47868, Stop: 47626, Start Num: 11

Candidate Starts for Colin_80:

(2, 48225), (5, 47979), (Start: 10 @47871 has 1 MA's), (Start: 11 @47868 has 3 MA's), (12, 47811), (16, 47679), (17, 47676),

Gene: Kalpine_82 Start: 47524, Stop: 47282, Start Num: 11

Candidate Starts for Kalpine_82:

(7, 47581), (Start: 9 @47542 has 1 MA's), (Start: 11 @47524 has 3 MA's), (12, 47467), (17, 47332),

Gene: Priamo_83 Start: 45479, Stop: 45234, Start Num: 11

Candidate Starts for Priamo_83:

(Start: 11 @45479 has 3 MA's), (12, 45422), (15, 45302), (17, 45287),

Gene: RedRock_80 Start: 47360, Stop: 47118, Start Num: 9

Candidate Starts for RedRock_80:

(6, 47417), (8, 47378), (Start: 9 @47360 has 1 MA's), (12, 47303), (17, 47168),

Gene: Trixie_81 Start: 47785, Stop: 47543, Start Num: 10

Candidate Starts for Trixie_81:

(1, 48172), (2, 48139), (5, 47893), (Start: 10 @47785 has 1 MA's), (Start: 11 @47782 has 3 MA's), (12, 47728), (17, 47593),

Gene: WeiHuaDA_82 Start: 47811, Stop: 47569, Start Num: 11

Candidate Starts for WeiHuaDA_82:

(7, 47868), (Start: 9 @47829 has 1 MA's), (Start: 11 @47811 has 3 MA's), (12, 47754), (17, 47619),