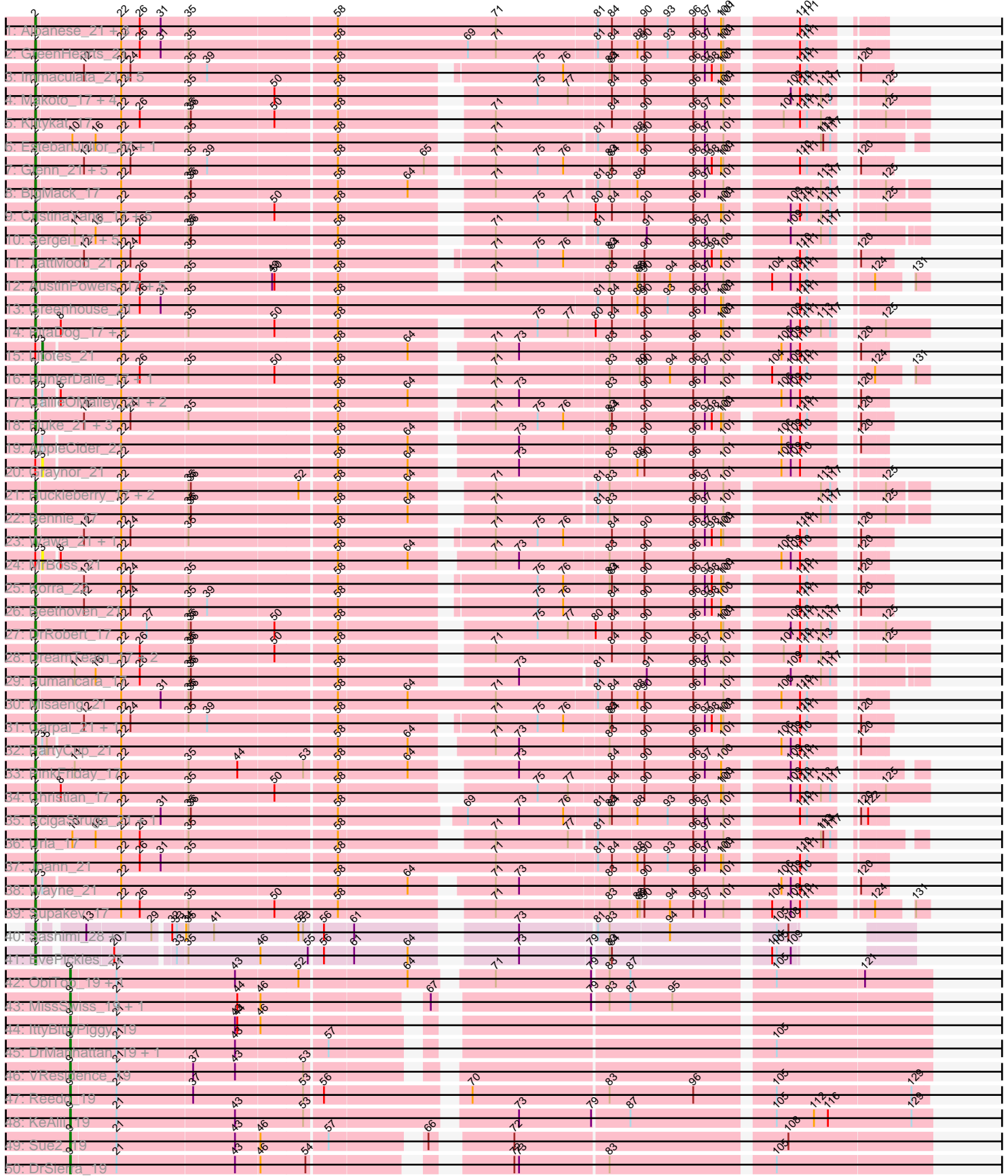
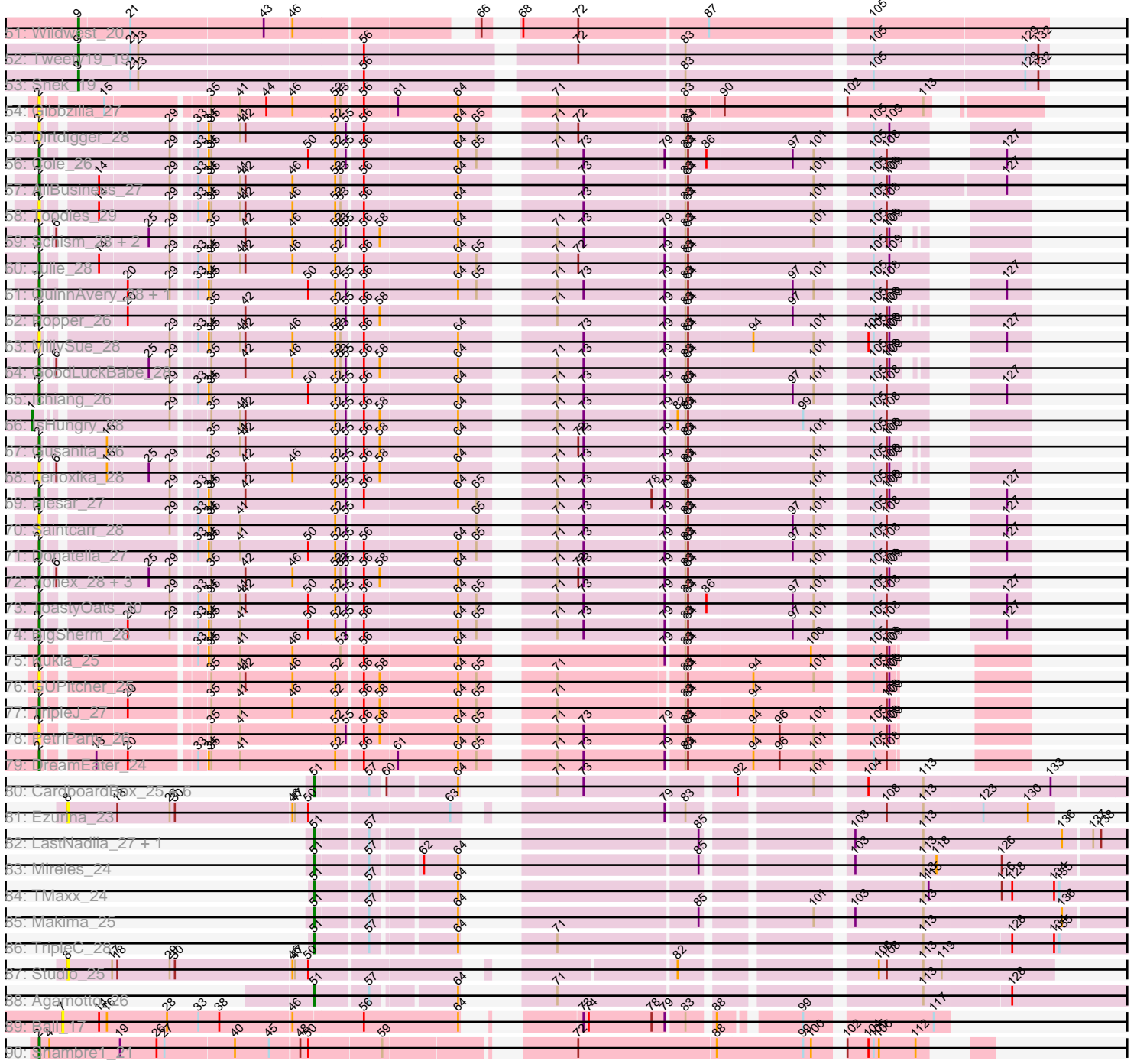


Pham 298189



Pham 298189



Note: Tracks are now grouped by subcluster and scaled. Switching in subcluster is indicated by changes in track color. Track scale is now set by default to display the region 30 bp upstream of start 1 to 30 bp downstream of the last possible start. If this default region is judged to be packed too tightly with annotated starts, the track will be further scaled to only show that region of the ORF with annotated starts. This action will be indicated by adding "Zoomed" to the title. For starts, yellow indicates the location of called starts comprised solely of Glimmer/GeneMark auto-annotations, green indicates the location of called starts with at least 1 manual gene annotation.

Pham 298189 Report

This analysis was run 06/08/26 on database version 649.

Pham number 298189 has 154 members, 18 are drafts.

Phages represented in each track:

- Track 1 : Albanese_21, Lakshmi_21, Nubia_21, Oxyntrius_21
- Track 2 : GreenHearts_21
- Track 3 : Immaculata_21, Riverdale_21, Potatoes_21, Scuttle_21, Rozby_21, Cholula_21
- Track 4 : Makoto_17, Lasagna_17, OurGirlNessie_17, Pterodactyl_17, WonderBoy_17
- Track 5 : Kittykat_17
- Track 6 : EstebanJulior_17, MamaPearl_17
- Track 7 : Glenn_21, MeganNoll_21, Savage2526_21, MrGloopy_21, BrotherBLo_21, RAP15_21
- Track 8 : BigMack_17
- Track 9 : CristinaYang_17, LilStuart_17, Nancia_17, Bodacious_17, Lucy_17, Lennox_17
- Track 10 : Sergei_17, KingBob_17, Herb_17, Temper16_17, Maria1952_17, Daiboju_17
- Track 11 : TattModd_21
- Track 12 : AustinPowers_17, Eunoia_17, OMalley_17, Aledel_17, Chridison_17, Riovina_17
- Track 13 : Greenhouse_21
- Track 14 : PitaDog_17, ChewChew_17
- Track 15 : Litotes_21
- Track 16 : HunterDalle_17, Vulture_17
- Track 17 : CallieOMalley_21, Suppi_21, Canowicakte_21
- Track 18 : Fluke_21, Kalizoi_21, Dino_21, Zorro_21
- Track 19 : AppleCider_21
- Track 20 : Graynor_21
- Track 21 : Huckleberry_17, HeadNerd_17, Moki_17
- Track 22 : Bennie_17
- Track 23 : Wawa_21, Vallejo_21
- Track 24 : MrBoss_21
- Track 25 : Korra_22
- Track 26 : Beethoven_21
- Track 27 : DrRobert_17
- Track 28 : DreamTeam_17, Preamble_17, Gisselle_17
- Track 29 : Pumancara_17
- Track 30 : Misaeng_21
- Track 31 : Carpal_21, Jumboset_21

- Track 32 : PartyCup_21
- Track 33 : PinkFriday_17
- Track 34 : Christian_17
- Track 35 : RcigaStruga_21, Huntingdon_21
- Track 36 : Urla_17
- Track 37 : Joann_21
- Track 38 : Wayne_21
- Track 39 : Supakev_17
- Track 40 : Sashimi_28, Faja_27
- Track 41 : EvePickles_27
- Track 42 : ObiToo_19, Crewmate_20
- Track 43 : MissSwiss_19, PandaPo_19
- Track 44 : IttyBittyPiggy_19
- Track 45 : DrManhattan_19, Adolin_19
- Track 46 : VResidence_19
- Track 47 : Reedo_19
- Track 48 : KeAlii_19
- Track 49 : Sue2_19
- Track 50 : DrSierra_19
- Track 51 : Wildwest_20
- Track 52 : Tweety19_19
- Track 53 : Snek_19
- Track 54 : Gibbzilla_27
- Track 55 : Dirdigger_28
- Track 56 : Cole_26
- Track 57 : AllBusiness_27
- Track 58 : Toodles_29
- Track 59 : Schism_28, Nandita_28, Guinevere_28
- Track 60 : Julie_28
- Track 61 : QuinnAvery_28, Halloweekend_26
- Track 62 : Popper_26
- Track 63 : MillySue_28
- Track 64 : GoodLuckBabe_28
- Track 65 : Ichiang_26
- Track 66 : IsHungry_28
- Track 67 : Gusanita_26
- Track 68 : Lenoxika_28
- Track 69 : Elesar_27
- Track 70 : Saintcarr_28
- Track 71 : Donatella_27
- Track 72 : Yonex_28, Kihatsu_29, Ryan_28, Zaheer_28
- Track 73 : ToastyOats_30
- Track 74 : BigSherm_28
- Track 75 : Kukla_25
- Track 76 : GUPitcher_25
- Track 77 : TripleJ_27
- Track 78 : PetriParty_26
- Track 79 : DreamEater_24
- Track 80 : CardboardBox_25, Neuville_24, ChipsNGuac_24, Gerri43_24, Roberts_24, ChamoyPickle_25, AnnabelleLee_24
- Track 81 : Ezurina_23
- Track 82 : LastNadiia_27, Audell_27
- Track 83 : Mireles_24

- Track 84 : TMaxx_24
- Track 85 : Makima_25
- Track 86 : TripleC_28
- Track 87 : Studio_25
- Track 88 : Agamoto_26
- Track 89 : Ball_17
- Track 90 : Shambre1_21

Summary of Final Annotations (See graph section above for start numbers):

The start number called the most often in the published annotations is 2, it was called in 109 of the 136 non-draft genes in the pham.

Genes that call this "Most Annotated" start:

- Albanese_21, Aledel_17, AllBusiness_27, AppleCider_21, AustinPowers_17, Beethoven_21, Bennie_17, BigMack_17, BigSherm_28, Bodacious_17, BrotherBLo_21, CallieOMalley_21, Canowicakte_21, Carpal_21, ChewChew_17, Cholula_21, Chridison_17, Christian_17, Cole_26, CristinaYang_17, Daiboju_17, Dino_21, Dirdigger_28, Donatella_27, DrRobert_17, DreamEater_24, DreamTeam_17, Elesar_27, EstebanJulior_17, Eunoia_17, EvePickles_27, Faja_27, Fluke_21, GUPitcher_25, Gibbzilla_27, Gisselle_17, Glenn_21, GoodLuckBabe_28, GreenHearts_21, Greenhouse_21, Guinevere_28, Gusanita_26, Halloweekend_26, HeadNerd_17, Herb_17, Huckleberry_17, HunterDalle_17, Huntingdon_21, Ichiang_26, Immaculata_21, Joann_21, Julie_28, Jumboset_21, Kalizoi_21, Kihatsu_29, KingBob_17, Kittykat_17, Korra_22, Kukla_25, Lakshmi_21, Lasagna_17, Lennox_17, Lenoxika_28, LilStuart_17, Lucy_17, Makoto_17, MamaPearl_17, Maria1952_17, MeganNoll_21, MillySue_28, Misaeng_21, Moki_17, MrGloopy_21, Nancia_17, Nandita_28, Nubia_21, OMalley_17, OurGirlNessie_17, Oxynfrius_21, PartyCup_21, PetriParty_26, PinkFriday_17, PitaDog_17, Popper_26, Potatoes_21, Preamble_17, Pterodactyl_17, Pumancara_17, QuinnAvery_28, RAP15_21, RcigaStruga_21, Riovina_17, Riverdale_21, Rozby_21, Ryan_28, Saintcarr_28, Sashimi_28, Savage2526_21, Schism_28, Scuttle_21, Sergei_17, Shambre1_21, Supakev_17, Suppi_21, TattModd_21, Temper16_17, ToastyOats_30, Toodles_29, TripleJ_27, Urla_17, Vallejo_21, Vulture_17, Wawa_21, Wayne_21, WonderBoy_17, Yonex_28, Zaheer_28, Zorro_21,

Genes that have the "Most Annotated" start but do not call it:

- Graynor_21, Litotes_21, MrBoss_21,

Genes that do not have the "Most Annotated" start:

- Adolin_19, Agamoto_26, AnnabelLee_24, Audell_27, Ball_17, CardboardBox_25, ChamoyPickle_25, ChipsNGuac_24, Crewmate_20, DrManhattan_19, DrSierra_19, Ezurina_23, Gerri43_24, IsHungry_28, IttyBittyPiggy_19, KeAlii_19, LastNadiia_27, Makima_25, Mireles_24, MissSwiss_19, Neuville_24, ObiToo_19, PandaPo_19, Reedo_19, Roberts_24, Snek_19, Studio_25, Sue2_19, TMaxx_24, TripleC_28, Tweety19_19, VResidence_19, Wildwest_20,

Summary by start number:

Start 1:

- Found in 1 of 154 (0.6%) of genes in pham
- Manual Annotations of this start: 1 of 136
- Called 100.0% of time when present
- Phage (with cluster) where this start called: IsHungry_28 (FF),

Start 2:

- Found in 121 of 154 (78.6%) of genes in pham
- Manual Annotations of this start: 109 of 136
- Called 97.5% of time when present
- Phage (with cluster) where this start called: Albanese_21 (AK), Aledel_17 (AK), AllBusiness_27 (FF), AppleCider_21 (AK), AustinPowers_17 (AK), Beethoven_21 (AK), Bennie_17 (AK), BigMack_17 (AK), BigSherm_28 (FF), Bodacious_17 (AK), BrotherBLo_21 (AK), CallieOMalley_21 (AK), Canowicakte_21 (AK), Carpal_21 (AK), ChewChew_17 (AK), Cholula_21 (AK), Chridison_17 (AK), Christian_17 (AK), Cole_26 (FF), CristinaYang_17 (AK), Daiboju_17 (AK), Dino_21 (AK), Dirtdigger_28 (FF), Donatella_27 (FF), DrRobert_17 (AK), DreamEater_24 (FJ), DreamTeam_17 (AK), Elesar_27 (FF), EstebanJulior_17 (AK), Eunoia_17 (AK), EvePickles_27 (AY), Faja_27 (AY), Fluke_21 (AK), GUPitcher_25 (FJ), Gibbzilla_27 (FB), Gisselle_17 (AK), Glenn_21 (AK), GoodLuckBabe_28 (FF), GreenHearts_21 (AK), Greenhouse_21 (AK), Guinevere_28 (FF), Gusanita_26 (FF), Halloween_26 (FF), HeadNerd_17 (AK), Herb_17 (AK), Huckleberry_17 (AK), HunterDalle_17 (AK), Huntingdon_21 (AK), Ichiang_26 (FF), Immaculata_21 (AK), Joann_21 (AK), Julie_28 (FF), Jumboset_21 (AK), Kalizoi_21 (AK), Kihatsu_29 (FF), KingBob_17 (AK), Kittykat_17 (AK), Korra_22 (AK), Kukla_25 (FJ), Lakshmi_21 (AK), Lasagna_17 (AK), Lennox_17 (AK), Lenoxika_28 (FF), LilStuart_17 (AK), Lucy_17 (AK), Makoto_17 (AK), MamaPearl_17 (AK), Maria1952_17 (AK), MeganNoll_21 (AK), MillySue_28 (FF), Misaeng_21 (AK), Moki_17 (AK), MrGloopy_21 (AK), Nancia_17 (AK), Nandita_28 (FF), Nubia_21 (AK), OMalley_17 (AK), OurGirlNessie_17 (AK), Oxyfrios_21 (AK), PartyCup_21 (AK), PetriParty_26 (FJ), PinkFriday_17 (AK), PitaDog_17 (AK), Popper_26 (FF), Potatoes_21 (AK), Preamble_17 (AK), Pterodactyl_17 (AK), Pumancara_17 (AK), QuinnAvery_28 (FF), RAP15_21 (AK), RcigaStruga_21 (AK), Rivovina_17 (AK), Riverdale_21 (AK), Rozby_21 (AK), Ryan_28 (FF), Saintcarr_28 (FF), Sashimi_28 (AY), Savage2526_21 (AK), Schism_28 (FF), Scuttle_21 (AK), Sergei_17 (AK), Shambre1_21 (singleton), Supakev_17 (AK), Suppi_21 (AK), TattModd_21 (AK), Temper16_17 (AK), ToastyOats_30 (FF), Toodles_29 (FF), TripleJ_27 (FJ), Urla_17 (AK), Vallejo_21 (AK), Vulture_17 (AK), Wawa_21 (AK), Wayne_21 (AK), WonderBoy_17 (AK), Yonex_28 (FF), Zaheer_28 (FF), Zorro_21 (AK),

Start 3:

- Found in 9 of 154 (5.8%) of genes in pham
- Manual Annotations of this start: 1 of 136
- Called 33.3% of time when present
- Phage (with cluster) where this start called: Graynor_21 (AK), Litotes_21 (AK), MrBoss_21 (AK),

Start 7:

- Found in 1 of 154 (0.6%) of genes in pham
- No Manual Annotations of this start.
- Called 100.0% of time when present
- Phage (with cluster) where this start called: Ball_17 (singleton),

Start 8:

- Found in 9 of 154 (5.8%) of genes in pham
- No Manual Annotations of this start.
- Called 22.2% of time when present
- Phage (with cluster) where this start called: Ezurina_23 (FR), Studio_25 (FR),

Start 9:

- Found in 15 of 154 (9.7%) of genes in pham
- Manual Annotations of this start: 14 of 136
- Called 100.0% of time when present
- Phage (with cluster) where this start called: Adolin_19 (AZ1), Crewmate_20 (AZ1), DrManhattan_19 (AZ1), DrSierra_19 (AZ1), IttyBittyPiggy_19 (AZ1), KeAlii_19 (AZ1), MissSwiss_19 (AZ1), ObiToo_19 (AZ1), PandaPo_19 (AZ1), Reedo_19 (AZ1), Snek_19 (AZ3), Sue2_19 (AZ1), Tweety19_19 (AZ3), VResidence_19 (AZ1), Wildwest_20 (AZ1),

Start 51:

- Found in 14 of 154 (9.1%) of genes in pham
- Manual Annotations of this start: 11 of 136
- Called 100.0% of time when present
- Phage (with cluster) where this start called: Agamoto_26 (FR), AnnabelLee_24 (FR), Audell_27 (FR), CardboardBox_25 (FR), ChamoyPickle_25 (FR), ChipsNGuac_24 (FR), Gerri43_24 (FR), LastNadiia_27 (FR), Makima_25 (FR), Mireles_24 (FR), Neuville_24 (FR), Roberts_24 (FR), TMaxx_24 (FR), TripleC_28 (FR),

Summary by clusters:

There are 9 clusters represented in this pham: FR, AK, singleton, FB, FF, AY, AZ1, FJ, AZ3,

Info for manual annotations of cluster AK:

- Start number 2 was manually annotated 83 times for cluster AK.
- Start number 3 was manually annotated 1 time for cluster AK.

Info for manual annotations of cluster AY:

- Start number 2 was manually annotated 3 times for cluster AY.

Info for manual annotations of cluster AZ1:

- Start number 9 was manually annotated 12 times for cluster AZ1.

Info for manual annotations of cluster AZ3:

- Start number 9 was manually annotated 2 times for cluster AZ3.

Info for manual annotations of cluster FF:

- Start number 1 was manually annotated 1 time for cluster FF.
- Start number 2 was manually annotated 19 times for cluster FF.

Info for manual annotations of cluster FJ:

- Start number 2 was manually annotated 3 times for cluster FJ.

Info for manual annotations of cluster FR:

- Start number 51 was manually annotated 11 times for cluster FR.

Gene Information:

Gene: Adolin_19 Start: 15578, Stop: 16585, Start Num: 9

Candidate Starts for Adolin_19:

(Start: 9 @15578 has 14 MA's), (21, 15635), (43, 15785), (57, 15896), (105, 16388),

Gene: Agamoto_26 Start: 19382, Stop: 20188, Start Num: 51

Candidate Starts for Agamoto_26:

(Start: 51 @19382 has 11 MA's), (57, 19439), (64, 19523), (71, 19565), (113, 19937), (128, 20033),

Gene: Albanese_21 Start: 17238, Stop: 18263, Start Num: 2

Candidate Starts for Albanese_21:

(Start: 2 @17238 has 109 MA's), (22, 17346), (26, 17370), (31, 17397), (35, 17430), (58, 17613), (71, 17814), (81, 17940), (84, 17958), (90, 17997), (93, 18027), (96, 18060), (97, 18075), (100, 18096), (101, 18099), (110, 18180), (111, 18189),

Gene: Aledel_17 Start: 15558, Stop: 16583, Start Num: 2

Candidate Starts for Aledel_17:

(Start: 2 @15558 has 109 MA's), (22, 15666), (26, 15690), (35, 15750), (49, 15855), (50, 15858), (58, 15933), (71, 16098), (83, 16239), (88, 16272), (89, 16275), (90, 16281), (94, 16314), (96, 16344), (97, 16359), (101, 16383), (104, 16428), (109, 16452), (110, 16464), (111, 16473), (124, 16533), (131, 16566),

Gene: AllBusiness_27 Start: 21394, Stop: 22413, Start Num: 2

Candidate Starts for AllBusiness_27:

(Start: 2 @21394 has 109 MA's), (14, 21445), (29, 21523), (33, 21544), (34, 21553), (35, 21556), (41, 21589), (42, 21595), (46, 21649), (52, 21697), (53, 21703), (56, 21724), (64, 21829), (73, 21937), (83, 22045), (84, 22048), (101, 22192), (105, 22243), (108, 22258), (109, 22261), (127, 22387),

Gene: AnnabelLee_24 Start: 16392, Stop: 17165, Start Num: 51

Candidate Starts for AnnabelLee_24:

(Start: 51 @16392 has 11 MA's), (57, 16446), (60, 16458), (64, 16530), (71, 16572), (73, 16602), (92, 16761), (101, 16836), (104, 16881), (113, 16944), (133, 17085),

Gene: AppleCider_21 Start: 17196, Stop: 18206, Start Num: 2

Candidate Starts for AppleCider_21:

(Start: 2 @17196 has 109 MA's), (Start: 3 @17202 has 1 MA's), (22, 17298), (58, 17565), (64, 17652), (73, 17769), (83, 17880), (90, 17922), (96, 17985), (101, 18024), (106, 18099), (109, 18111), (110, 18123), (120, 18174),

Gene: Audell_27 Start: 19686, Stop: 20486, Start Num: 51

Candidate Starts for Audell_27:

(Start: 51 @19686 has 11 MA's), (57, 19740), (85, 20022), (103, 20160), (113, 20238), (136, 20394), (137, 20424), (138, 20433),

Gene: AustinPowers_17 Start: 15559, Stop: 16584, Start Num: 2

Candidate Starts for AustinPowers_17:

(Start: 2 @15559 has 109 MA's), (22, 15667), (26, 15691), (35, 15751), (49, 15856), (50, 15859), (58, 15934), (71, 16099), (83, 16240), (88, 16273), (89, 16276), (90, 16282), (94, 16315), (96, 16345), (97, 16360), (101, 16384), (104, 16429), (109, 16453), (110, 16465), (111, 16474), (124, 16534), (131,

16567),

Gene: Ball_17 Start: 14360, Stop: 15238, Start Num: 7

Candidate Starts for Ball_17:

(7, 14360), (14, 14402), (16, 14411), (28, 14480), (33, 14516), (38, 14540), (46, 14621), (56, 14699), (64, 14807), (73, 14876), (74, 14882), (78, 14954), (79, 14969), (83, 14987), (88, 15011), (99, 15089), (117, 15221),

Gene: Beethoven_21 Start: 17142, Stop: 18149, Start Num: 2

Candidate Starts for Beethoven_21:

(Start: 2 @17142 has 109 MA's), (12, 17202), (22, 17250), (24, 17262), (35, 17334), (39, 17358), (58, 17517), (75, 17745), (76, 17778), (84, 17838), (90, 17877), (96, 17940), (97, 17955), (98, 17964), (100, 17976), (110, 18060), (111, 18069), (120, 18111),

Gene: Bennie_17 Start: 15564, Stop: 16598, Start Num: 2

Candidate Starts for Bennie_17:

(Start: 2 @15564 has 109 MA's), (22, 15672), (35, 15756), (36, 15759), (58, 15939), (64, 16026), (71, 16104), (81, 16227), (83, 16242), (96, 16347), (97, 16362), (101, 16386), (113, 16494), (117, 16506), (125, 16548),

Gene: BigMack_17 Start: 15552, Stop: 16586, Start Num: 2

Candidate Starts for BigMack_17:

(Start: 2 @15552 has 109 MA's), (22, 15660), (35, 15744), (36, 15747), (58, 15927), (64, 16014), (71, 16092), (81, 16215), (83, 16230), (88, 16263), (96, 16335), (97, 16350), (101, 16374), (113, 16482), (117, 16494), (125, 16536),

Gene: BigSherm_28 Start: 21148, Stop: 22122, Start Num: 2

Candidate Starts for BigSherm_28:

(Start: 2 @21148 has 109 MA's), (20, 21229), (29, 21277), (33, 21298), (34, 21307), (35, 21310), (41, 21343), (50, 21421), (52, 21451), (55, 21463), (56, 21478), (64, 21583), (65, 21604), (71, 21661), (73, 21691), (79, 21781), (83, 21799), (84, 21802), (97, 21919), (101, 21943), (105, 21994), (108, 22009), (127, 22096),

Gene: Bodacious_17 Start: 15562, Stop: 16605, Start Num: 2

Candidate Starts for Bodacious_17:

(Start: 2 @15562 has 109 MA's), (22, 15670), (35, 15754), (50, 15862), (58, 15937), (75, 16156), (77, 16195), (80, 16225), (84, 16246), (90, 16285), (96, 16348), (100, 16384), (101, 16387), (109, 16456), (110, 16468), (111, 16477), (113, 16495), (117, 16507), (125, 16549),

Gene: BrotherBLo_21 Start: 17148, Stop: 18155, Start Num: 2

Candidate Starts for BrotherBLo_21:

(Start: 2 @17148 has 109 MA's), (12, 17208), (22, 17256), (24, 17268), (35, 17340), (39, 17364), (58, 17523), (65, 17631), (71, 17697), (75, 17751), (76, 17784), (83, 17841), (84, 17844), (90, 17883), (96, 17946), (97, 17961), (98, 17970), (100, 17982), (101, 17985), (110, 18066), (111, 18075), (120, 18117),

Gene: CallieOMalley_21 Start: 17196, Stop: 18206, Start Num: 2

Candidate Starts for CallieOMalley_21:

(Start: 2 @17196 has 109 MA's), (Start: 3 @17202 has 1 MA's), (8, 17220), (22, 17298), (58, 17565), (64, 17652), (71, 17739), (73, 17769), (83, 17880), (90, 17922), (96, 17985), (101, 18024), (106, 18099), (109, 18111), (110, 18123), (120, 18174),

Gene: Canowicakte_21 Start: 17231, Stop: 18241, Start Num: 2

Candidate Starts for Canowicakte_21:

(Start: 2 @17231 has 109 MA's), (Start: 3 @17237 has 1 MA's), (8, 17255), (22, 17333), (58, 17600), (64, 17687), (71, 17774), (73, 17804), (83, 17915), (90, 17957), (96, 18020), (101, 18059), (106, 18134), (109, 18146), (110, 18158), (120, 18209),

Gene: CardboardBox_25 Start: 16392, Stop: 17165, Start Num: 51

Candidate Starts for CardboardBox_25:

(Start: 51 @16392 has 11 MA's), (57, 16446), (60, 16458), (64, 16530), (71, 16572), (73, 16602), (92, 16761), (101, 16836), (104, 16881), (113, 16944), (133, 17085),

Gene: Carpal_21 Start: 17149, Stop: 18156, Start Num: 2

Candidate Starts for Carpal_21:

(Start: 2 @17149 has 109 MA's), (12, 17209), (22, 17257), (24, 17269), (35, 17341), (39, 17365), (58, 17524), (71, 17698), (75, 17752), (76, 17785), (83, 17842), (84, 17845), (90, 17884), (96, 17947), (97, 17962), (98, 17971), (100, 17983), (101, 17986), (110, 18067), (111, 18076), (120, 18118),

Gene: ChamoyPickle_25 Start: 16392, Stop: 17165, Start Num: 51

Candidate Starts for ChamoyPickle_25:

(Start: 51 @16392 has 11 MA's), (57, 16446), (60, 16458), (64, 16530), (71, 16572), (73, 16602), (92, 16761), (101, 16836), (104, 16881), (113, 16944), (133, 17085),

Gene: ChewChew_17 Start: 15561, Stop: 16604, Start Num: 2

Candidate Starts for ChewChew_17:

(Start: 2 @15561 has 109 MA's), (8, 15591), (22, 15669), (35, 15753), (50, 15861), (58, 15936), (75, 16155), (77, 16194), (80, 16224), (84, 16245), (90, 16284), (96, 16347), (100, 16383), (101, 16386), (109, 16455), (110, 16467), (111, 16476), (113, 16494), (117, 16506), (125, 16548),

Gene: ChipsNGuac_24 Start: 16392, Stop: 17165, Start Num: 51

Candidate Starts for ChipsNGuac_24:

(Start: 51 @16392 has 11 MA's), (57, 16446), (60, 16458), (64, 16530), (71, 16572), (73, 16602), (92, 16761), (101, 16836), (104, 16881), (113, 16944), (133, 17085),

Gene: Cholula_21 Start: 17194, Stop: 18201, Start Num: 2

Candidate Starts for Cholula_21:

(Start: 2 @17194 has 109 MA's), (12, 17254), (22, 17302), (24, 17314), (35, 17386), (39, 17410), (58, 17569), (75, 17797), (76, 17830), (83, 17887), (84, 17890), (90, 17929), (96, 17992), (97, 18007), (98, 18016), (100, 18028), (101, 18031), (110, 18112), (111, 18121), (120, 18163),

Gene: Chridison_17 Start: 15559, Stop: 16584, Start Num: 2

Candidate Starts for Chridison_17:

(Start: 2 @15559 has 109 MA's), (22, 15667), (26, 15691), (35, 15751), (49, 15856), (50, 15859), (58, 15934), (71, 16099), (83, 16240), (88, 16273), (89, 16276), (90, 16282), (94, 16315), (96, 16345), (97, 16360), (101, 16384), (104, 16429), (109, 16453), (110, 16465), (111, 16474), (124, 16534), (131, 16567),

Gene: Christian_17 Start: 15562, Stop: 16605, Start Num: 2

Candidate Starts for Christian_17:

(Start: 2 @15562 has 109 MA's), (8, 15592), (22, 15670), (35, 15754), (50, 15862), (58, 15937), (75, 16156), (77, 16195), (84, 16246), (90, 16285), (96, 16348), (100, 16384), (101, 16387), (109, 16456), (110, 16468), (111, 16477), (113, 16495), (117, 16507), (125, 16549),

Gene: Cole_26 Start: 20895, Stop: 21869, Start Num: 2

Candidate Starts for Cole_26:

(Start: 2 @20895 has 109 MA's), (29, 21024), (33, 21045), (34, 21054), (35, 21057), (50, 21168), (52, 21198), (55, 21210), (56, 21225), (64, 21330), (65, 21351), (71, 21408), (73, 21438), (79, 21528), (83, 21546), (84, 21549), (86, 21570), (97, 21666), (101, 21690), (105, 21741), (108, 21756), (127, 21843),

Gene: Crewmate_20 Start: 15561, Stop: 16601, Start Num: 9

Candidate Starts for Crewmate_20:

(Start: 9 @15561 has 14 MA's), (21, 15618), (43, 15768), (52, 15846), (64, 15978), (71, 16065), (79, 16188), (83, 16206), (87, 16233), (105, 16404), (121, 16515),

Gene: CristinaYang_17 Start: 15562, Stop: 16605, Start Num: 2

Candidate Starts for CristinaYang_17:

(Start: 2 @15562 has 109 MA's), (22, 15670), (35, 15754), (50, 15862), (58, 15937), (75, 16156), (77, 16195), (80, 16225), (84, 16246), (90, 16285), (96, 16348), (100, 16384), (101, 16387), (109, 16456), (110, 16468), (111, 16477), (113, 16495), (117, 16507), (125, 16549),

Gene: Daiboju_17 Start: 15567, Stop: 16598, Start Num: 2

Candidate Starts for Daiboju_17:

(Start: 2 @15567 has 109 MA's), (11, 15615), (16, 15642), (22, 15675), (26, 15699), (35, 15759), (36, 15762), (58, 15942), (71, 16107), (81, 16230), (91, 16290), (96, 16350), (97, 16365), (101, 16389), (109, 16458), (113, 16497), (117, 16509),

Gene: Dino_21 Start: 17147, Stop: 18154, Start Num: 2

Candidate Starts for Dino_21:

(Start: 2 @17147 has 109 MA's), (12, 17207), (22, 17255), (24, 17267), (35, 17339), (58, 17522), (71, 17696), (75, 17750), (76, 17783), (83, 17840), (84, 17843), (90, 17882), (96, 17945), (97, 17960), (98, 17969), (100, 17981), (101, 17984), (110, 18065), (111, 18074), (120, 18116),

Gene: Dirdigger_28 Start: 20968, Stop: 21942, Start Num: 2

Candidate Starts for Dirdigger_28:

(Start: 2 @20968 has 109 MA's), (29, 21097), (33, 21118), (34, 21127), (35, 21130), (41, 21163), (42, 21169), (52, 21271), (55, 21283), (56, 21298), (64, 21403), (65, 21424), (71, 21481), (72, 21505), (83, 21619), (84, 21622), (105, 21814), (109, 21832),

Gene: Donatella_27 Start: 21359, Stop: 22333, Start Num: 2

Candidate Starts for Donatella_27:

(Start: 2 @21359 has 109 MA's), (33, 21509), (34, 21518), (35, 21521), (41, 21554), (50, 21632), (52, 21662), (55, 21674), (56, 21689), (64, 21794), (65, 21815), (71, 21872), (73, 21902), (79, 21992), (83, 22010), (84, 22013), (97, 22130), (101, 22154), (105, 22205), (108, 22220), (127, 22307),

Gene: DrManhattan_19 Start: 15568, Stop: 16575, Start Num: 9

Candidate Starts for DrManhattan_19:

(Start: 9 @15568 has 14 MA's), (21, 15625), (43, 15775), (57, 15886), (105, 16378),

Gene: DrRobert_17 Start: 15562, Stop: 16605, Start Num: 2

Candidate Starts for DrRobert_17:

(Start: 2 @15562 has 109 MA's), (22, 15670), (27, 15703), (35, 15754), (36, 15757), (50, 15862), (58, 15937), (75, 16156), (77, 16195), (80, 16225), (84, 16246), (90, 16285), (96, 16348), (100, 16384), (101, 16387), (109, 16456), (110, 16468), (111, 16477), (113, 16495), (117, 16507), (125, 16549),

Gene: DrSierra_19 Start: 15659, Stop: 16663, Start Num: 9

Candidate Starts for DrSierra_19:

(Start: 9 @15659 has 14 MA's), (21, 15716), (43, 15866), (46, 15896), (54, 15953), (72, 16151), (73, 16157), (83, 16268), (105, 16466),

Gene: DreamEater_24 Start: 20583, Stop: 21521, Start Num: 2

Candidate Starts for DreamEater_24:

(Start: 2 @20583 has 109 MA's), (13, 20631), (20, 20664), (33, 20733), (34, 20742), (35, 20745), (41, 20778), (52, 20886), (56, 20913), (61, 20949), (64, 21018), (65, 21039), (71, 21096), (73, 21126), (79, 21219), (83, 21237), (84, 21240), (94, 21315), (96, 21345), (101, 21384), (105, 21435), (108, 21450),

Gene: DreamTeam_17 Start: 15601, Stop: 16638, Start Num: 2

Candidate Starts for DreamTeam_17:

(Start: 2 @15601 has 109 MA's), (22, 15709), (26, 15733), (35, 15793), (36, 15796), (50, 15901), (58, 15976), (71, 16141), (84, 16285), (90, 16324), (96, 16387), (97, 16402), (101, 16426), (107, 16486), (110, 16507), (111, 16516), (113, 16534), (125, 16588),

Gene: Elesar_27 Start: 21141, Stop: 22118, Start Num: 2

Candidate Starts for Elesar_27:

(Start: 2 @21141 has 109 MA's), (29, 21270), (33, 21291), (34, 21300), (35, 21303), (42, 21342), (52, 21444), (55, 21456), (56, 21471), (64, 21576), (65, 21597), (71, 21654), (73, 21684), (78, 21762), (79, 21774), (83, 21792), (84, 21795), (101, 21939), (105, 21990), (108, 22005), (109, 22008), (127, 22092),

Gene: EstebanJulior_17 Start: 15572, Stop: 16600, Start Num: 2

Candidate Starts for EstebanJulior_17:

(Start: 2 @15572 has 109 MA's), (10, 15620), (16, 15650), (22, 15683), (35, 15767), (58, 15950), (71, 16115), (81, 16238), (88, 16286), (90, 16295), (96, 16358), (97, 16373), (101, 16397), (113, 16505), (114, 16508), (117, 16517),

Gene: Eunoia_17 Start: 15558, Stop: 16583, Start Num: 2

Candidate Starts for Eunoia_17:

(Start: 2 @15558 has 109 MA's), (22, 15666), (26, 15690), (35, 15750), (49, 15855), (50, 15858), (58, 15933), (71, 16098), (83, 16239), (88, 16272), (89, 16275), (90, 16281), (94, 16314), (96, 16344), (97, 16359), (101, 16383), (104, 16428), (109, 16452), (110, 16464), (111, 16473), (124, 16533), (131, 16566),

Gene: EvePickles_27 Start: 20438, Stop: 21370, Start Num: 2

Candidate Starts for EvePickles_27:

(Start: 2 @20438 has 109 MA's), (20, 20519), (33, 20588), (35, 20600), (46, 20693), (55, 20753), (56, 20768), (61, 20804), (64, 20873), (73, 20981), (79, 21071), (83, 21089), (84, 21092), (104, 21278), (105, 21284), (109, 21302),

Gene: Ezurina_23 Start: 16879, Stop: 17883, Start Num: 8

Candidate Starts for Ezurina_23:

(8, 16879), (18, 16936), (29, 16996), (30, 17002), (46, 17134), (47, 17137), (50, 17152), (63, 17305), (79, 17488), (83, 17506), (108, 17695), (113, 17737), (123, 17803), (130, 17854),

Gene: Faja_27 Start: 20331, Stop: 21263, Start Num: 2

Candidate Starts for Faja_27:

(Start: 2 @20331 has 109 MA's), (13, 20379), (29, 20460), (32, 20475), (33, 20481), (34, 20490), (35, 20493), (41, 20526), (52, 20634), (53, 20640), (56, 20661), (61, 20697), (73, 20874), (81, 20967), (83, 20982), (94, 21057), (105, 21177), (108, 21192),

Gene: Fluke_21 Start: 17190, Stop: 18197, Start Num: 2

Candidate Starts for Fluke_21:

(Start: 2 @17190 has 109 MA's), (12, 17250), (22, 17298), (24, 17310), (35, 17382), (58, 17565), (71, 17739), (75, 17793), (76, 17826), (83, 17883), (84, 17886), (90, 17925), (96, 17988), (97, 18003), (98, 18012), (100, 18024), (101, 18027), (110, 18108), (111, 18117), (120, 18159),

Gene: GUPitcher_25 Start: 20004, Stop: 20939, Start Num: 2

Candidate Starts for GUPitcher_25:

(Start: 2 @20004 has 109 MA's), (35, 20166), (41, 20199), (42, 20205), (46, 20259), (52, 20307), (56, 20334), (58, 20352), (64, 20439), (65, 20460), (71, 20517), (83, 20655), (84, 20658), (94, 20733), (101, 20802), (105, 20853), (108, 20868), (109, 20871),

Gene: Gerri43_24 Start: 16392, Stop: 17165, Start Num: 51

Candidate Starts for Gerri43_24:

(Start: 51 @16392 has 11 MA's), (57, 16446), (60, 16458), (64, 16530), (71, 16572), (73, 16602), (92, 16761), (101, 16836), (104, 16881), (113, 16944), (133, 17085),

Gene: Gibbzilla_27 Start: 18060, Stop: 19064, Start Num: 2

Candidate Starts for Gibbzilla_27:

(Start: 2 @18060 has 109 MA's), (15, 18117), (35, 18222), (41, 18255), (44, 18285), (46, 18315), (52, 18363), (53, 18369), (56, 18390), (61, 18426), (64, 18495), (71, 18573), (83, 18714), (90, 18756), (102, 18879), (113, 18966),

Gene: Gisselle_17 Start: 15601, Stop: 16638, Start Num: 2

Candidate Starts for Gisselle_17:

(Start: 2 @15601 has 109 MA's), (22, 15709), (26, 15733), (35, 15793), (36, 15796), (50, 15901), (58, 15976), (71, 16141), (84, 16285), (90, 16324), (96, 16387), (97, 16402), (101, 16426), (107, 16486), (110, 16507), (111, 16516), (113, 16534), (125, 16588),

Gene: Glenn_21 Start: 17199, Stop: 18206, Start Num: 2

Candidate Starts for Glenn_21:

(Start: 2 @17199 has 109 MA's), (12, 17259), (22, 17307), (24, 17319), (35, 17391), (39, 17415), (58, 17574), (65, 17682), (71, 17748), (75, 17802), (76, 17835), (83, 17892), (84, 17895), (90, 17934), (96, 17997), (97, 18012), (98, 18021), (100, 18033), (101, 18036), (110, 18117), (111, 18126), (120, 18168),

Gene: GoodLuckBabe_28 Start: 21504, Stop: 22451, Start Num: 2

Candidate Starts for GoodLuckBabe_28:

(Start: 2 @21504 has 109 MA's), (6, 21513), (25, 21603), (29, 21627), (35, 21660), (42, 21699), (46, 21753), (52, 21801), (53, 21807), (55, 21813), (56, 21828), (58, 21846), (64, 21933), (71, 22011), (73, 22041), (79, 22131), (83, 22149), (84, 22152), (101, 22293), (105, 22344), (108, 22359), (109, 22362),

Gene: Graynor_21 Start: 17223, Stop: 18227, Start Num: 3

Candidate Starts for Graynor_21:

(Start: 2 @17217 has 109 MA's), (Start: 3 @17223 has 1 MA's), (22, 17319), (58, 17586), (64, 17673), (73, 17790), (83, 17901), (88, 17934), (90, 17943), (96, 18006), (101, 18045), (106, 18120), (109, 18132), (110, 18144),

Gene: GreenHearts_21 Start: 17285, Stop: 18310, Start Num: 2

Candidate Starts for GreenHearts_21:

(Start: 2 @17285 has 109 MA's), (22, 17393), (26, 17417), (31, 17444), (35, 17477), (58, 17660), (69, 17825), (71, 17861), (81, 17987), (84, 18005), (88, 18035), (90, 18044), (93, 18074), (96, 18107), (97, 18122), (100, 18143), (101, 18146), (110, 18227), (111, 18236),

Gene: Greenhouse_21 Start: 17209, Stop: 18234, Start Num: 2

Candidate Starts for Greenhouse_21:

(Start: 2 @17209 has 109 MA's), (22, 17317), (26, 17341), (31, 17368), (35, 17401), (58, 17584), (81, 17911), (84, 17929), (88, 17959), (90, 17968), (93, 17998), (96, 18031), (97, 18046), (100, 18067), (101, 18070), (110, 18151), (111, 18160),

Gene: Guinevere_28 Start: 21094, Stop: 22041, Start Num: 2

Candidate Starts for Guinevere_28:

(Start: 2 @21094 has 109 MA's), (6, 21103), (25, 21193), (29, 21217), (35, 21250), (42, 21289), (46, 21343), (52, 21391), (53, 21397), (55, 21403), (56, 21418), (58, 21436), (64, 21523), (71, 21601), (73, 21631), (79, 21721), (83, 21739), (84, 21742), (101, 21883), (105, 21934), (108, 21949), (109, 21952),

Gene: Gusanita_26 Start: 20850, Stop: 21803, Start Num: 2

Candidate Starts for Gusanita_26:

(Start: 2 @20850 has 109 MA's), (16, 20910), (35, 21012), (41, 21045), (42, 21051), (52, 21153), (55, 21165), (56, 21180), (58, 21198), (64, 21285), (71, 21363), (72, 21387), (73, 21393), (79, 21483), (83, 21501), (84, 21504), (101, 21645), (105, 21696), (108, 21711), (109, 21714),

Gene: Halloweekend_26 Start: 20774, Stop: 21748, Start Num: 2

Candidate Starts for Halloweekend_26:

(Start: 2 @20774 has 109 MA's), (20, 20855), (29, 20903), (33, 20924), (34, 20933), (35, 20936), (50, 21047), (52, 21077), (55, 21089), (56, 21104), (64, 21209), (65, 21230), (71, 21287), (73, 21317), (79, 21407), (83, 21425), (84, 21428), (97, 21545), (101, 21569), (105, 21620), (108, 21635), (127, 21722),

Gene: HeadNerd_17 Start: 15564, Stop: 16598, Start Num: 2

Candidate Starts for HeadNerd_17:

(Start: 2 @15564 has 109 MA's), (22, 15672), (35, 15756), (36, 15759), (52, 15894), (58, 15939), (64, 16026), (71, 16104), (81, 16227), (83, 16242), (96, 16347), (97, 16362), (101, 16386), (113, 16494), (117, 16506), (125, 16548),

Gene: Herb_17 Start: 15567, Stop: 16598, Start Num: 2

Candidate Starts for Herb_17:

(Start: 2 @15567 has 109 MA's), (11, 15615), (16, 15642), (22, 15675), (26, 15699), (35, 15759), (36, 15762), (58, 15942), (71, 16107), (81, 16230), (91, 16290), (96, 16350), (97, 16365), (101, 16389), (109, 16458), (113, 16497), (117, 16509),

Gene: Huckleberry_17 Start: 15564, Stop: 16598, Start Num: 2

Candidate Starts for Huckleberry_17:

(Start: 2 @15564 has 109 MA's), (22, 15672), (35, 15756), (36, 15759), (52, 15894), (58, 15939), (64, 16026), (71, 16104), (81, 16227), (83, 16242), (96, 16347), (97, 16362), (101, 16386), (113, 16494), (117, 16506), (125, 16548),

Gene: HunterDalle_17 Start: 15558, Stop: 16583, Start Num: 2

Candidate Starts for HunterDalle_17:

(Start: 2 @15558 has 109 MA's), (22, 15666), (26, 15690), (35, 15750), (50, 15858), (58, 15933), (71, 16098), (83, 16239), (89, 16275), (90, 16281), (94, 16314), (96, 16344), (97, 16359), (101, 16383), (104, 16428), (109, 16452), (110, 16464), (111, 16473), (124, 16533), (131, 16566),

Gene: Huntingdon_21 Start: 17195, Stop: 18202, Start Num: 2

Candidate Starts for Huntingdon_21:

(Start: 2 @17195 has 109 MA's), (22, 17303), (31, 17354), (35, 17387), (36, 17390), (58, 17570), (69, 17717), (73, 17783), (76, 17840), (81, 17879), (83, 17894), (84, 17897), (88, 17927), (93, 17966), (96, 17999), (97, 18014), (101, 18038), (110, 18119), (111, 18128), (120, 18170), (122, 18179),

Gene: Ichiang_26 Start: 20793, Stop: 21767, Start Num: 2

Candidate Starts for Ichiang_26:

(Start: 2 @20793 has 109 MA's), (29, 20922), (33, 20943), (34, 20952), (35, 20955), (50, 21066), (52, 21096), (55, 21108), (56, 21123), (64, 21228), (71, 21306), (73, 21336), (79, 21426), (83, 21444), (84, 21447), (97, 21564), (101, 21588), (105, 21639), (108, 21654), (127, 21741),

Gene: Immaculata_21 Start: 17193, Stop: 18200, Start Num: 2

Candidate Starts for Immaculata_21:

(Start: 2 @17193 has 109 MA's), (12, 17253), (22, 17301), (24, 17313), (35, 17385), (39, 17409), (58, 17568), (75, 17796), (76, 17829), (83, 17886), (84, 17889), (90, 17928), (96, 17991), (97, 18006), (98, 18015), (100, 18027), (101, 18030), (110, 18111), (111, 18120), (120, 18162),

Gene: IsHungry_28 Start: 21392, Stop: 22369, Start Num: 1

Candidate Starts for IsHungry_28:

(Start: 1 @21392 has 1 MA's), (29, 21524), (35, 21557), (41, 21590), (42, 21596), (52, 21698), (55, 21710), (56, 21725), (58, 21743), (64, 21830), (71, 21908), (73, 21938), (79, 22028), (82, 22037), (83, 22046), (84, 22049), (99, 22178), (105, 22241), (108, 22256),

Gene: IttyBittyPiggy_19 Start: 15653, Stop: 16660, Start Num: 9

Candidate Starts for IttyBittyPiggy_19:

(Start: 9 @15653 has 14 MA's), (21, 15710), (43, 15860), (44, 15863), (46, 15890),

Gene: Joann_21 Start: 17189, Stop: 18214, Start Num: 2

Candidate Starts for Joann_21:

(Start: 2 @17189 has 109 MA's), (22, 17297), (26, 17321), (31, 17348), (35, 17381), (58, 17564), (71, 17765), (81, 17891), (84, 17909), (88, 17939), (90, 17948), (93, 17978), (96, 18011), (97, 18026), (100, 18047), (101, 18050), (110, 18131), (111, 18140),

Gene: Julie_28 Start: 21546, Stop: 22520, Start Num: 2

Candidate Starts for Julie_28:

(Start: 2 @21546 has 109 MA's), (14, 21597), (29, 21675), (33, 21696), (34, 21705), (35, 21708), (41, 21741), (42, 21747), (46, 21801), (52, 21849), (56, 21876), (64, 21981), (65, 22002), (71, 22059), (72, 22083), (79, 22179), (83, 22197), (84, 22200), (105, 22392), (109, 22410),

Gene: Jumboset_21 Start: 17142, Stop: 18149, Start Num: 2

Candidate Starts for Jumboset_21:

(Start: 2 @17142 has 109 MA's), (12, 17202), (22, 17250), (24, 17262), (35, 17334), (39, 17358), (58, 17517), (71, 17691), (75, 17745), (76, 17778), (83, 17835), (84, 17838), (90, 17877), (96, 17940), (97, 17955), (98, 17964), (100, 17976), (101, 17979), (110, 18060), (111, 18069), (120, 18111),

Gene: Kalizoi_21 Start: 17141, Stop: 18148, Start Num: 2

Candidate Starts for Kalizoi_21:

(Start: 2 @17141 has 109 MA's), (12, 17201), (22, 17249), (24, 17261), (35, 17333), (58, 17516), (71, 17690), (75, 17744), (76, 17777), (83, 17834), (84, 17837), (90, 17876), (96, 17939), (97, 17954), (98, 17963), (100, 17975), (101, 17978), (110, 18059), (111, 18068), (120, 18110),

Gene: KeAlii_19 Start: 15122, Stop: 16168, Start Num: 9

Candidate Starts for KeAlii_19:

(Start: 9 @15122 has 14 MA's), (21, 15182), (43, 15332), (53, 15416), (73, 15659), (79, 15752), (87, 15797), (105, 15968), (112, 16016), (116, 16034), (129, 16142),

Gene: Kihatsu_29 Start: 21419, Stop: 22387, Start Num: 2

Candidate Starts for Kihatsu_29:

(Start: 2 @21419 has 109 MA's), (6, 21428), (25, 21518), (29, 21542), (35, 21575), (42, 21614), (46, 21668), (52, 21716), (53, 21722), (55, 21728), (56, 21743), (58, 21761), (64, 21848), (71, 21926), (72, 21950), (73, 21956), (79, 22046), (83, 22064), (84, 22067), (101, 22208), (105, 22259), (108, 22274), (109, 22277),

Gene: KingBob_17 Start: 15567, Stop: 16598, Start Num: 2

Candidate Starts for KingBob_17:

(Start: 2 @15567 has 109 MA's), (11, 15615), (16, 15642), (22, 15675), (26, 15699), (35, 15759), (36, 15762), (58, 15942), (71, 16107), (81, 16230), (91, 16290), (96, 16350), (97, 16365), (101, 16389), (109, 16458), (113, 16497), (117, 16509),

Gene: Kittykat_17 Start: 15585, Stop: 16622, Start Num: 2

Candidate Starts for Kittykat_17:

(Start: 2 @15585 has 109 MA's), (22, 15693), (26, 15717), (35, 15777), (36, 15780), (50, 15885), (58, 15960), (71, 16125), (84, 16269), (90, 16308), (96, 16371), (97, 16386), (101, 16410), (107, 16470), (110, 16491), (111, 16500), (113, 16518), (125, 16572),

Gene: Korra_22 Start: 17147, Stop: 18154, Start Num: 2

Candidate Starts for Korra_22:

(Start: 2 @17147 has 109 MA's), (12, 17207), (22, 17255), (24, 17267), (35, 17339), (58, 17522), (75, 17750), (76, 17783), (83, 17840), (84, 17843), (90, 17882), (96, 17945), (97, 17960), (98, 17969), (100, 17981), (101, 17984), (110, 18065), (111, 18074), (120, 18116),

Gene: Kukla_25 Start: 19824, Stop: 20756, Start Num: 2

Candidate Starts for Kukla_25:

(Start: 2 @19824 has 109 MA's), (33, 19974), (34, 19983), (35, 19986), (41, 20019), (46, 20079), (53, 20133), (56, 20154), (64, 20259), (79, 20457), (83, 20475), (84, 20478), (100, 20616), (105, 20670), (108, 20685), (109, 20688),

Gene: Lakshmi_21 Start: 17214, Stop: 18239, Start Num: 2

Candidate Starts for Lakshmi_21:

(Start: 2 @17214 has 109 MA's), (22, 17322), (26, 17346), (31, 17373), (35, 17406), (58, 17589), (71, 17790), (81, 17916), (84, 17934), (90, 17973), (93, 18003), (96, 18036), (97, 18051), (100, 18072), (101, 18075), (110, 18156), (111, 18165),

Gene: Lasagna_17 Start: 15562, Stop: 16605, Start Num: 2

Candidate Starts for Lasagna_17:

(Start: 2 @15562 has 109 MA's), (22, 15670), (35, 15754), (50, 15862), (58, 15937), (75, 16156), (77, 16195), (84, 16246), (90, 16285), (96, 16348), (100, 16384), (101, 16387), (109, 16456), (110, 16468), (111, 16477), (113, 16495), (117, 16507), (125, 16549),

Gene: LastNadiia_27 Start: 18638, Stop: 19438, Start Num: 51

Candidate Starts for LastNadiia_27:

(Start: 51 @18638 has 11 MA's), (57, 18692), (85, 18974), (103, 19112), (113, 19190), (136, 19346), (137, 19376), (138, 19385),

Gene: Lennox_17 Start: 15550, Stop: 16593, Start Num: 2

Candidate Starts for Lennox_17:

(Start: 2 @15550 has 109 MA's), (22, 15658), (35, 15742), (50, 15850), (58, 15925), (75, 16144), (77, 16183), (80, 16213), (84, 16234), (90, 16273), (96, 16336), (100, 16372), (101, 16375), (109, 16444), (110, 16456), (111, 16465), (113, 16483), (117, 16495), (125, 16537),

Gene: Lenoxika_28 Start: 21090, Stop: 22037, Start Num: 2

Candidate Starts for Lenoxika_28:

(Start: 2 @21090 has 109 MA's), (6, 21099), (16, 21144), (25, 21189), (29, 21213), (35, 21246), (42, 21285), (46, 21339), (52, 21387), (55, 21399), (56, 21414), (58, 21432), (64, 21519), (71, 21597), (73, 21627), (79, 21717), (83, 21735), (84, 21738), (101, 21879), (105, 21930), (108, 21945), (109, 21948),

Gene: LilStuart_17 Start: 15550, Stop: 16593, Start Num: 2

Candidate Starts for LilStuart_17:

(Start: 2 @15550 has 109 MA's), (22, 15658), (35, 15742), (50, 15850), (58, 15925), (75, 16144), (77, 16183), (80, 16213), (84, 16234), (90, 16273), (96, 16336), (100, 16372), (101, 16375), (109, 16444), (110, 16456), (111, 16465), (113, 16483), (117, 16495), (125, 16537),

Gene: Litotes_21 Start: 17187, Stop: 18191, Start Num: 3

Candidate Starts for Litotes_21:

(Start: 2 @17181 has 109 MA's), (Start: 3 @17187 has 1 MA's), (22, 17283), (58, 17550), (64, 17637), (71, 17724), (73, 17754), (83, 17865), (90, 17907), (96, 17970), (101, 18009), (106, 18084), (109, 18096), (110, 18108), (120, 18159),

Gene: Lucy_17 Start: 15542, Stop: 16585, Start Num: 2

Candidate Starts for Lucy_17:

(Start: 2 @15542 has 109 MA's), (22, 15650), (35, 15734), (50, 15842), (58, 15917), (75, 16136), (77, 16175), (80, 16205), (84, 16226), (90, 16265), (96, 16328), (100, 16364), (101, 16367), (109, 16436), (110, 16448), (111, 16457), (113, 16475), (117, 16487), (125, 16529),

Gene: Makima_25 Start: 17721, Stop: 18521, Start Num: 51

Candidate Starts for Makima_25:

(Start: 51 @17721 has 11 MA's), (57, 17775), (64, 17859), (85, 18057), (101, 18165), (103, 18195), (113, 18273), (136, 18429),

Gene: Makoto_17 Start: 15563, Stop: 16606, Start Num: 2

Candidate Starts for Makoto_17:

(Start: 2 @15563 has 109 MA's), (22, 15671), (35, 15755), (50, 15863), (58, 15938), (75, 16157), (77, 16196), (84, 16247), (90, 16286), (96, 16349), (100, 16385), (101, 16388), (109, 16457), (110, 16469), (111, 16478), (113, 16496), (117, 16508), (125, 16550),

Gene: MamaPearl_17 Start: 15572, Stop: 16600, Start Num: 2

Candidate Starts for MamaPearl_17:

(Start: 2 @15572 has 109 MA's), (10, 15620), (16, 15650), (22, 15683), (35, 15767), (58, 15950), (71, 16115), (81, 16238), (88, 16286), (90, 16295), (96, 16358), (97, 16373), (101, 16397), (113, 16505), (114, 16508), (117, 16517),

Gene: Maria1952_17 Start: 15567, Stop: 16598, Start Num: 2

Candidate Starts for Maria1952_17:

(Start: 2 @15567 has 109 MA's), (11, 15615), (16, 15642), (22, 15675), (26, 15699), (35, 15759), (36, 15762), (58, 15942), (71, 16107), (81, 16230), (91, 16290), (96, 16350), (97, 16365), (101, 16389), (109, 16458), (113, 16497), (117, 16509),

Gene: MeganNoll_21 Start: 17199, Stop: 18206, Start Num: 2

Candidate Starts for MeganNoll_21:

(Start: 2 @17199 has 109 MA's), (12, 17259), (22, 17307), (24, 17319), (35, 17391), (39, 17415), (58, 17574), (65, 17682), (71, 17748), (75, 17802), (76, 17835), (83, 17892), (84, 17895), (90, 17934), (96, 17997), (97, 18012), (98, 18021), (100, 18033), (101, 18036), (110, 18117), (111, 18126), (120, 18168),

Gene: MillySue_28 Start: 20964, Stop: 21938, Start Num: 2

Candidate Starts for MillySue_28:

(Start: 2 @20964 has 109 MA's), (29, 21093), (33, 21114), (34, 21123), (35, 21126), (41, 21159), (42, 21165), (46, 21219), (52, 21267), (53, 21273), (56, 21294), (64, 21399), (73, 21507), (79, 21597), (83, 21615), (84, 21618), (94, 21690), (101, 21759), (104, 21804), (105, 21810), (108, 21825), (109, 21828), (127, 21912),

Gene: Mireles_24 Start: 16292, Stop: 17092, Start Num: 51

Candidate Starts for Mireles_24:

(Start: 51 @16292 has 11 MA's), (57, 16346), (62, 16391), (64, 16430), (85, 16628), (103, 16766), (113, 16844), (118, 16859), (126, 16931),

Gene: Misaeng_21 Start: 17259, Stop: 18284, Start Num: 2

Candidate Starts for Misaeng_21:

(Start: 2 @17259 has 109 MA's), (22, 17367), (31, 17418), (35, 17451), (36, 17454), (58, 17634), (64, 17721), (71, 17835), (81, 17961), (84, 17979), (88, 18009), (90, 18018), (96, 18081), (101, 18120), (106, 18177), (110, 18201), (111, 18210),

Gene: MissSwiss_19 Start: 15610, Stop: 16614, Start Num: 9

Candidate Starts for MissSwiss_19:

(Start: 9 @15610 has 14 MA's), (21, 15667), (44, 15820), (46, 15847), (67, 16027), (79, 16201), (83, 16219), (87, 16246), (95, 16300),

Gene: Moki_17 Start: 15564, Stop: 16598, Start Num: 2

Candidate Starts for Moki_17:

(Start: 2 @15564 has 109 MA's), (22, 15672), (35, 15756), (36, 15759), (52, 15894), (58, 15939), (64, 16026), (71, 16104), (81, 16227), (83, 16242), (96, 16347), (97, 16362), (101, 16386), (113, 16494), (117, 16506), (125, 16548),

Gene: MrBoss_21 Start: 17187, Stop: 18191, Start Num: 3

Candidate Starts for MrBoss_21:

(Start: 2 @17181 has 109 MA's), (Start: 3 @17187 has 1 MA's), (8, 17205), (22, 17283), (58, 17550), (64, 17637), (71, 17724), (73, 17754), (83, 17865), (90, 17907), (96, 17970), (106, 18084), (109, 18096), (110, 18108), (120, 18159),

Gene: MrGloopy_21 Start: 17133, Stop: 18140, Start Num: 2

Candidate Starts for MrGloopy_21:

(Start: 2 @17133 has 109 MA's), (12, 17193), (22, 17241), (24, 17253), (35, 17325), (39, 17349), (58, 17508), (65, 17616), (71, 17682), (75, 17736), (76, 17769), (83, 17826), (84, 17829), (90, 17868), (96, 17931), (97, 17946), (98, 17955), (100, 17967), (101, 17970), (110, 18051), (111, 18060), (120, 18102),

Gene: Nancia_17 Start: 15562, Stop: 16605, Start Num: 2

Candidate Starts for Nancia_17:

(Start: 2 @15562 has 109 MA's), (22, 15670), (35, 15754), (50, 15862), (58, 15937), (75, 16156), (77, 16195), (80, 16225), (84, 16246), (90, 16285), (96, 16348), (100, 16384), (101, 16387), (109, 16456), (110, 16468), (111, 16477), (113, 16495), (117, 16507), (125, 16549),

Gene: Nandita_28 Start: 21094, Stop: 22041, Start Num: 2

Candidate Starts for Nandita_28:

(Start: 2 @21094 has 109 MA's), (6, 21103), (25, 21193), (29, 21217), (35, 21250), (42, 21289), (46, 21343), (52, 21391), (53, 21397), (55, 21403), (56, 21418), (58, 21436), (64, 21523), (71, 21601), (73, 21631), (79, 21721), (83, 21739), (84, 21742), (101, 21883), (105, 21934), (108, 21949), (109, 21952),

Gene: Neuville_24 Start: 16392, Stop: 17165, Start Num: 51

Candidate Starts for Neuville_24:

(Start: 51 @16392 has 11 MA's), (57, 16446), (60, 16458), (64, 16530), (71, 16572), (73, 16602), (92, 16761), (101, 16836), (104, 16881), (113, 16944), (133, 17085),

Gene: Nubia_21 Start: 17174, Stop: 18199, Start Num: 2

Candidate Starts for Nubia_21:

(Start: 2 @17174 has 109 MA's), (22, 17282), (26, 17306), (31, 17333), (35, 17366), (58, 17549), (71, 17750), (81, 17876), (84, 17894), (90, 17933), (93, 17963), (96, 17996), (97, 18011), (100, 18032), (101, 18035), (110, 18116), (111, 18125),

Gene: OMalley_17 Start: 15558, Stop: 16583, Start Num: 2

Candidate Starts for OMalley_17:

(Start: 2 @15558 has 109 MA's), (22, 15666), (26, 15690), (35, 15750), (49, 15855), (50, 15858), (58, 15933), (71, 16098), (83, 16239), (88, 16272), (89, 16275), (90, 16281), (94, 16314), (96, 16344), (97, 16359), (101, 16383), (104, 16428), (109, 16452), (110, 16464), (111, 16473), (124, 16533), (131, 16566),

Gene: ObiToo_19 Start: 15298, Stop: 16338, Start Num: 9

Candidate Starts for ObiToo_19:

(Start: 9 @15298 has 14 MA's), (21, 15355), (43, 15505), (52, 15583), (64, 15715), (71, 15802), (79, 15925), (83, 15943), (87, 15970), (105, 16141), (121, 16252),

Gene: OurGirlNessie_17 Start: 15542, Stop: 16585, Start Num: 2

Candidate Starts for OurGirlNessie_17:

(Start: 2 @15542 has 109 MA's), (22, 15650), (35, 15734), (50, 15842), (58, 15917), (75, 16136), (77, 16175), (84, 16226), (90, 16265), (96, 16328), (100, 16364), (101, 16367), (109, 16436), (110, 16448), (111, 16457), (113, 16475), (117, 16487), (125, 16529),

Gene: Oxynfrius_21 Start: 17187, Stop: 18212, Start Num: 2

Candidate Starts for Oxynfrius_21:

(Start: 2 @17187 has 109 MA's), (22, 17295), (26, 17319), (31, 17346), (35, 17379), (58, 17562), (71, 17763), (81, 17889), (84, 17907), (90, 17946), (93, 17976), (96, 18009), (97, 18024), (100, 18045), (101, 18048), (110, 18129), (111, 18138),

Gene: PandaPo_19 Start: 15610, Stop: 16614, Start Num: 9

Candidate Starts for PandaPo_19:

(Start: 9 @15610 has 14 MA's), (21, 15667), (44, 15820), (46, 15847), (67, 16027), (79, 16201), (83, 16219), (87, 16246), (95, 16300),

Gene: PartyCup_21 Start: 17228, Stop: 18238, Start Num: 2

Candidate Starts for PartyCup_21:

(Start: 2 @17228 has 109 MA's), (Start: 3 @17234 has 1 MA's), (5, 17240), (22, 17330), (58, 17597), (64, 17684), (71, 17771), (73, 17801), (83, 17912), (90, 17954), (96, 18017), (101, 18056), (106, 18131), (109, 18143), (110, 18155), (120, 18206),

Gene: PetriParty_26 Start: 20691, Stop: 21629, Start Num: 2

Candidate Starts for PetriParty_26:

(Start: 2 @20691 has 109 MA's), (35, 20853), (41, 20886), (52, 20994), (55, 21006), (56, 21021), (58, 21039), (64, 21126), (65, 21147), (71, 21204), (73, 21234), (79, 21327), (83, 21345), (84, 21348), (94, 21423), (96, 21453), (101, 21492), (105, 21543), (108, 21558), (109, 21561),

Gene: PinkFriday_17 Start: 15588, Stop: 16619, Start Num: 2

Candidate Starts for PinkFriday_17:

(Start: 2 @15588 has 109 MA's), (11, 15636), (22, 15696), (35, 15780), (44, 15843), (53, 15924), (58, 15963), (64, 16050), (73, 16158), (84, 16275), (90, 16314), (96, 16377), (97, 16392), (100, 16413), (109, 16485), (110, 16497), (111, 16506),

Gene: PitaDog_17 Start: 15553, Stop: 16596, Start Num: 2

Candidate Starts for PitaDog_17:

(Start: 2 @15553 has 109 MA's), (8, 15583), (22, 15661), (35, 15745), (50, 15853), (58, 15928), (75, 16147), (77, 16186), (80, 16216), (84, 16237), (90, 16276), (96, 16339), (100, 16375), (101, 16378), (109, 16447), (110, 16459), (111, 16468), (113, 16486), (117, 16498), (125, 16540),

Gene: Popper_26 Start: 20999, Stop: 21952, Start Num: 2

Candidate Starts for Popper_26:

(Start: 2 @20999 has 109 MA's), (20, 21080), (35, 21161), (42, 21200), (52, 21302), (55, 21314), (56, 21329), (58, 21347), (71, 21512), (79, 21632), (83, 21650), (84, 21653), (97, 21770), (105, 21845), (108, 21860), (109, 21863),

Gene: Potatoes_21 Start: 17194, Stop: 18201, Start Num: 2

Candidate Starts for Potatoes_21:

(Start: 2 @17194 has 109 MA's), (12, 17254), (22, 17302), (24, 17314), (35, 17386), (39, 17410), (58, 17569), (75, 17797), (76, 17830), (83, 17887), (84, 17890), (90, 17929), (96, 17992), (97, 18007), (98, 18016), (100, 18028), (101, 18031), (110, 18112), (111, 18121), (120, 18163),

Gene: Preamble_17 Start: 15562, Stop: 16599, Start Num: 2

Candidate Starts for Preamble_17:

(Start: 2 @15562 has 109 MA's), (22, 15670), (26, 15694), (35, 15754), (36, 15757), (50, 15862), (58, 15937), (71, 16102), (84, 16246), (90, 16285), (96, 16348), (97, 16363), (101, 16387), (107, 16447), (110, 16468), (111, 16477), (113, 16495), (125, 16549),

Gene: Pterodactyl_17 Start: 15543, Stop: 16586, Start Num: 2

Candidate Starts for Pterodactyl_17:

(Start: 2 @15543 has 109 MA's), (22, 15651), (35, 15735), (50, 15843), (58, 15918), (75, 16137), (77, 16176), (84, 16227), (90, 16266), (96, 16329), (100, 16365), (101, 16368), (109, 16437), (110, 16449), (111, 16458), (113, 16476), (117, 16488), (125, 16530),

Gene: Pumancara_17 Start: 15569, Stop: 16600, Start Num: 2

Candidate Starts for Pumancara_17:

(Start: 2 @15569 has 109 MA's), (11, 15617), (16, 15644), (22, 15677), (26, 15701), (35, 15761), (36, 15764), (58, 15944), (73, 16139), (81, 16232), (91, 16292), (96, 16352), (97, 16367), (101, 16391), (109, 16460), (113, 16499), (117, 16511),

Gene: QuinnAvery_28 Start: 21157, Stop: 22131, Start Num: 2

Candidate Starts for QuinnAvery_28:

(Start: 2 @21157 has 109 MA's), (20, 21238), (29, 21286), (33, 21307), (34, 21316), (35, 21319), (50, 21430), (52, 21460), (55, 21472), (56, 21487), (64, 21592), (65, 21613), (71, 21670), (73, 21700), (79, 21790), (83, 21808), (84, 21811), (97, 21928), (101, 21952), (105, 22003), (108, 22018), (127, 22105),

Gene: RAP15_21 Start: 17199, Stop: 18206, Start Num: 2

Candidate Starts for RAP15_21:

(Start: 2 @17199 has 109 MA's), (12, 17259), (22, 17307), (24, 17319), (35, 17391), (39, 17415), (58, 17574), (65, 17682), (71, 17748), (75, 17802), (76, 17835), (83, 17892), (84, 17895), (90, 17934), (96, 17997), (97, 18012), (98, 18021), (100, 18033), (101, 18036), (110, 18117), (111, 18126), (120,

18168),

Gene: RcigaStruga_21 Start: 17195, Stop: 18202, Start Num: 2

Candidate Starts for RcigaStruga_21:

(Start: 2 @17195 has 109 MA's), (22, 17303), (31, 17354), (35, 17387), (36, 17390), (58, 17570), (69, 17717), (73, 17783), (76, 17840), (81, 17879), (83, 17894), (84, 17897), (88, 17927), (93, 17966), (96, 17999), (97, 18014), (101, 18038), (110, 18119), (111, 18128), (120, 18170), (122, 18179),

Gene: Reedo_19 Start: 15141, Stop: 16175, Start Num: 9

Candidate Starts for Reedo_19:

(Start: 9 @15141 has 14 MA's), (21, 15198), (37, 15294), (53, 15432), (56, 15453), (70, 15615), (83, 15786), (96, 15894), (105, 15984), (129, 16155),

Gene: Riovina_17 Start: 15558, Stop: 16583, Start Num: 2

Candidate Starts for Riovina_17:

(Start: 2 @15558 has 109 MA's), (22, 15666), (26, 15690), (35, 15750), (49, 15855), (50, 15858), (58, 15933), (71, 16098), (83, 16239), (88, 16272), (89, 16275), (90, 16281), (94, 16314), (96, 16344), (97, 16359), (101, 16383), (104, 16428), (109, 16452), (110, 16464), (111, 16473), (124, 16533), (131, 16566),

Gene: Riverdale_21 Start: 17129, Stop: 18136, Start Num: 2

Candidate Starts for Riverdale_21:

(Start: 2 @17129 has 109 MA's), (12, 17189), (22, 17237), (24, 17249), (35, 17321), (39, 17345), (58, 17504), (75, 17732), (76, 17765), (83, 17822), (84, 17825), (90, 17864), (96, 17927), (97, 17942), (98, 17951), (100, 17963), (101, 17966), (110, 18047), (111, 18056), (120, 18098),

Gene: Roberts_24 Start: 16392, Stop: 17165, Start Num: 51

Candidate Starts for Roberts_24:

(Start: 51 @16392 has 11 MA's), (57, 16446), (60, 16458), (64, 16530), (71, 16572), (73, 16602), (92, 16761), (101, 16836), (104, 16881), (113, 16944), (133, 17085),

Gene: Rozby_21 Start: 17130, Stop: 18137, Start Num: 2

Candidate Starts for Rozby_21:

(Start: 2 @17130 has 109 MA's), (12, 17190), (22, 17238), (24, 17250), (35, 17322), (39, 17346), (58, 17505), (75, 17733), (76, 17766), (83, 17823), (84, 17826), (90, 17865), (96, 17928), (97, 17943), (98, 17952), (100, 17964), (101, 17967), (110, 18048), (111, 18057), (120, 18099),

Gene: Ryan_28 Start: 21684, Stop: 22652, Start Num: 2

Candidate Starts for Ryan_28:

(Start: 2 @21684 has 109 MA's), (6, 21693), (25, 21783), (29, 21807), (35, 21840), (42, 21879), (46, 21933), (52, 21981), (53, 21987), (55, 21993), (56, 22008), (58, 22026), (64, 22113), (71, 22191), (72, 22215), (73, 22221), (79, 22311), (83, 22329), (84, 22332), (101, 22473), (105, 22524), (108, 22539), (109, 22542),

Gene: Saintcarr_28 Start: 21240, Stop: 22214, Start Num: 2

Candidate Starts for Saintcarr_28:

(Start: 2 @21240 has 109 MA's), (29, 21369), (33, 21390), (34, 21399), (35, 21402), (41, 21435), (52, 21543), (55, 21555), (65, 21696), (71, 21753), (73, 21783), (79, 21873), (83, 21891), (84, 21894), (97, 22011), (101, 22035), (105, 22086), (108, 22101), (127, 22188),

Gene: Sashimi_28 Start: 20237, Stop: 21169, Start Num: 2

Candidate Starts for Sashimi_28:

(Start: 2 @20237 has 109 MA's), (13, 20285), (29, 20366), (32, 20381), (33, 20387), (34, 20396), (35, 20399), (41, 20432), (52, 20540), (53, 20546), (56, 20567), (61, 20603), (73, 20780), (81, 20873), (83, 20888), (94, 20963), (105, 21083), (108, 21098),

Gene: Savage2526_21 Start: 17193, Stop: 18200, Start Num: 2

Candidate Starts for Savage2526_21:

(Start: 2 @17193 has 109 MA's), (12, 17253), (22, 17301), (24, 17313), (35, 17385), (39, 17409), (58, 17568), (65, 17676), (71, 17742), (75, 17796), (76, 17829), (83, 17886), (84, 17889), (90, 17928), (96, 17991), (97, 18006), (98, 18015), (100, 18027), (101, 18030), (110, 18111), (111, 18120), (120, 18162),

Gene: Schism_28 Start: 21094, Stop: 22041, Start Num: 2

Candidate Starts for Schism_28:

(Start: 2 @21094 has 109 MA's), (6, 21103), (25, 21193), (29, 21217), (35, 21250), (42, 21289), (46, 21343), (52, 21391), (53, 21397), (55, 21403), (56, 21418), (58, 21436), (64, 21523), (71, 21601), (73, 21631), (79, 21721), (83, 21739), (84, 21742), (101, 21883), (105, 21934), (108, 21949), (109, 21952),

Gene: Scuttle_21 Start: 17198, Stop: 18205, Start Num: 2

Candidate Starts for Scuttle_21:

(Start: 2 @17198 has 109 MA's), (12, 17258), (22, 17306), (24, 17318), (35, 17390), (39, 17414), (58, 17573), (75, 17801), (76, 17834), (83, 17891), (84, 17894), (90, 17933), (96, 17996), (97, 18011), (98, 18020), (100, 18032), (101, 18035), (110, 18116), (111, 18125), (120, 18167),

Gene: Sergei_17 Start: 15567, Stop: 16598, Start Num: 2

Candidate Starts for Sergei_17:

(Start: 2 @15567 has 109 MA's), (11, 15615), (16, 15642), (22, 15675), (26, 15699), (35, 15759), (36, 15762), (58, 15942), (71, 16107), (81, 16230), (91, 16290), (96, 16350), (97, 16365), (101, 16389), (109, 16458), (113, 16497), (117, 16509),

Gene: Shambre1_21 Start: 17642, Stop: 18598, Start Num: 2

Candidate Starts for Shambre1_21:

(Start: 2 @17642 has 109 MA's), (4, 17654), (19, 17732), (26, 17774), (27, 17783), (40, 17861), (45, 17900), (48, 17930), (50, 17939), (59, 18020), (72, 18194), (88, 18350), (99, 18446), (100, 18455), (102, 18479), (104, 18503), (105, 18509), (106, 18515), (112, 18557),

Gene: Snek_19 Start: 14174, Stop: 15217, Start Num: 9

Candidate Starts for Snek_19:

(Start: 9 @14174 has 14 MA's), (21, 14234), (23, 14243), (56, 14489), (83, 14822), (105, 15020), (129, 15191), (132, 15206),

Gene: Studio_25 Start: 17034, Stop: 18032, Start Num: 8

Candidate Starts for Studio_25:

(8, 17034), (17, 17085), (18, 17091), (29, 17151), (30, 17157), (46, 17289), (47, 17292), (50, 17307), (82, 17646), (106, 17835), (108, 17844), (113, 17886), (119, 17907),

Gene: Sue2_19 Start: 15808, Stop: 16815, Start Num: 9

Candidate Starts for Sue2_19:

(Start: 9 @15808 has 14 MA's), (21, 15865), (43, 16015), (46, 16045), (57, 16126), (66, 16225), (72, 16303), (108, 16633),

Gene: Supakev_17 Start: 15560, Stop: 16585, Start Num: 2

Candidate Starts for Supakev_17:

(Start: 2 @15560 has 109 MA's), (22, 15668), (26, 15692), (35, 15752), (50, 15860), (58, 15935), (71, 16100), (83, 16241), (88, 16274), (89, 16277), (90, 16283), (94, 16316), (96, 16346), (97, 16361), (101, 16385), (104, 16430), (109, 16454), (110, 16466), (111, 16475), (124, 16535), (131, 16568),

Gene: Suppi_21 Start: 17231, Stop: 18241, Start Num: 2

Candidate Starts for Suppi_21:

(Start: 2 @17231 has 109 MA's), (Start: 3 @17237 has 1 MA's), (8, 17255), (22, 17333), (58, 17600), (64, 17687), (71, 17774), (73, 17804), (83, 17915), (90, 17957), (96, 18020), (101, 18059), (106, 18134), (109, 18146), (110, 18158), (120, 18209),

Gene: TMaxx_24 Start: 16209, Stop: 17015, Start Num: 51

Candidate Starts for TMaxx_24:

(Start: 51 @16209 has 11 MA's), (57, 16266), (64, 16350), (113, 16764), (115, 16770), (126, 16848), (128, 16860), (134, 16905), (135, 16911),

Gene: TattModd_21 Start: 17192, Stop: 18199, Start Num: 2

Candidate Starts for TattModd_21:

(Start: 2 @17192 has 109 MA's), (12, 17252), (22, 17300), (24, 17312), (35, 17384), (58, 17567), (71, 17741), (75, 17795), (76, 17828), (83, 17885), (84, 17888), (90, 17927), (96, 17990), (97, 18005), (98, 18014), (100, 18026), (110, 18110), (111, 18119), (120, 18161),

Gene: Temper16_17 Start: 15567, Stop: 16598, Start Num: 2

Candidate Starts for Temper16_17:

(Start: 2 @15567 has 109 MA's), (11, 15615), (16, 15642), (22, 15675), (26, 15699), (35, 15759), (36, 15762), (58, 15942), (71, 16107), (81, 16230), (91, 16290), (96, 16350), (97, 16365), (101, 16389), (109, 16458), (113, 16497), (117, 16509),

Gene: ToastyOats_30 Start: 21698, Stop: 22672, Start Num: 2

Candidate Starts for ToastyOats_30:

(Start: 2 @21698 has 109 MA's), (29, 21827), (33, 21848), (34, 21857), (35, 21860), (41, 21893), (42, 21899), (50, 21971), (52, 22001), (55, 22013), (56, 22028), (64, 22133), (65, 22154), (71, 22211), (73, 22241), (79, 22331), (83, 22349), (84, 22352), (86, 22373), (97, 22469), (101, 22493), (105, 22544), (108, 22559), (127, 22646),

Gene: Toodles_29 Start: 21524, Stop: 22501, Start Num: 2

Candidate Starts for Toodles_29:

(Start: 2 @21524 has 109 MA's), (14, 21575), (29, 21653), (33, 21674), (34, 21683), (35, 21686), (41, 21719), (42, 21725), (46, 21779), (52, 21827), (53, 21833), (56, 21854), (64, 21959), (73, 22067), (83, 22175), (84, 22178), (101, 22322), (105, 22373), (108, 22388),

Gene: TripleC_28 Start: 19697, Stop: 20491, Start Num: 51

Candidate Starts for TripleC_28:

(Start: 51 @19697 has 11 MA's), (57, 19754), (64, 19838), (71, 19880), (113, 20252), (128, 20348), (134, 20393), (135, 20399),

Gene: TripleJ_27 Start: 20708, Stop: 21640, Start Num: 2

Candidate Starts for TripleJ_27:

(Start: 2 @20708 has 109 MA's), (20, 20789), (35, 20870), (41, 20903), (46, 20963), (52, 21011), (56, 21038), (58, 21056), (64, 21143), (65, 21164), (71, 21221), (83, 21359), (84, 21362), (94, 21434), (108, 21569), (109, 21572),

Gene: Tweety19_19 Start: 14173, Stop: 15216, Start Num: 9

Candidate Starts for Tweety19_19:

(Start: 9 @14173 has 14 MA's), (21, 14233), (23, 14242), (56, 14488), (72, 14704), (83, 14821), (105, 15019), (129, 15190), (132, 15205),

Gene: Urla_17 Start: 15574, Stop: 16602, Start Num: 2

Candidate Starts for Urla_17:

(Start: 2 @15574 has 109 MA's), (10, 15622), (16, 15652), (22, 15685), (26, 15709), (35, 15769), (58, 15952), (71, 16117), (77, 16210), (81, 16240), (96, 16360), (97, 16375), (101, 16399), (113, 16507), (114, 16510), (117, 16519),

Gene: VResidence_19 Start: 15221, Stop: 16234, Start Num: 9

Candidate Starts for VResidence_19:

(Start: 9 @15221 has 14 MA's), (21, 15278), (37, 15374), (43, 15428), (53, 15512),

Gene: Vallejo_21 Start: 17131, Stop: 18138, Start Num: 2

Candidate Starts for Vallejo_21:

(Start: 2 @17131 has 109 MA's), (12, 17191), (22, 17239), (24, 17251), (35, 17323), (58, 17506), (71, 17680), (75, 17734), (76, 17767), (84, 17827), (90, 17866), (96, 17929), (97, 17944), (98, 17953), (100, 17965), (101, 17968), (110, 18049), (111, 18058), (120, 18100),

Gene: Vulture_17 Start: 15558, Stop: 16583, Start Num: 2

Candidate Starts for Vulture_17:

(Start: 2 @15558 has 109 MA's), (22, 15666), (26, 15690), (35, 15750), (50, 15858), (58, 15933), (71, 16098), (83, 16239), (89, 16275), (90, 16281), (94, 16314), (96, 16344), (97, 16359), (101, 16383), (104, 16428), (109, 16452), (110, 16464), (111, 16473), (124, 16533), (131, 16566),

Gene: Wawa_21 Start: 17168, Stop: 18175, Start Num: 2

Candidate Starts for Wawa_21:

(Start: 2 @17168 has 109 MA's), (12, 17228), (22, 17276), (24, 17288), (35, 17360), (58, 17543), (71, 17717), (75, 17771), (76, 17804), (84, 17864), (90, 17903), (96, 17966), (97, 17981), (98, 17990), (100, 18002), (101, 18005), (110, 18086), (111, 18095), (120, 18137),

Gene: Wayne_21 Start: 17277, Stop: 18287, Start Num: 2

Candidate Starts for Wayne_21:

(Start: 2 @17277 has 109 MA's), (Start: 3 @17283 has 1 MA's), (22, 17379), (58, 17646), (64, 17733), (71, 17820), (73, 17850), (83, 17961), (90, 18003), (96, 18066), (101, 18105), (106, 18180), (109, 18192), (110, 18204), (120, 18255),

Gene: Wildwest_20 Start: 16573, Stop: 17577, Start Num: 9

Candidate Starts for Wildwest_20:

(Start: 9 @16573 has 14 MA's), (21, 16630), (43, 16780), (46, 16810), (66, 16987), (68, 17002), (72, 17065), (87, 17209), (105, 17380),

Gene: WonderBoy_17 Start: 15543, Stop: 16586, Start Num: 2

Candidate Starts for WonderBoy_17:

(Start: 2 @15543 has 109 MA's), (22, 15651), (35, 15735), (50, 15843), (58, 15918), (75, 16137), (77, 16176), (84, 16227), (90, 16266), (96, 16329), (100, 16365), (101, 16368), (109, 16437), (110, 16449), (111, 16458), (113, 16476), (117, 16488), (125, 16530),

Gene: Yonex_28 Start: 21684, Stop: 22652, Start Num: 2

Candidate Starts for Yonex_28:

(Start: 2 @21684 has 109 MA's), (6, 21693), (25, 21783), (29, 21807), (35, 21840), (42, 21879), (46, 21933), (52, 21981), (53, 21987), (55, 21993), (56, 22008), (58, 22026), (64, 22113), (71, 22191), (72, 22215), (73, 22221), (79, 22311), (83, 22329), (84, 22332), (101, 22473), (105, 22524), (108, 22539),

(109, 22542),

Gene: Zaheer_28 Start: 21773, Stop: 22741, Start Num: 2

Candidate Starts for Zaheer_28:

(Start: 2 @21773 has 109 MA's), (6, 21782), (25, 21872), (29, 21896), (35, 21929), (42, 21968), (46, 22022), (52, 22070), (53, 22076), (55, 22082), (56, 22097), (58, 22115), (64, 22202), (71, 22280), (72, 22304), (73, 22310), (79, 22400), (83, 22418), (84, 22421), (101, 22562), (105, 22613), (108, 22628), (109, 22631),

Gene: Zorro_21 Start: 17147, Stop: 18154, Start Num: 2

Candidate Starts for Zorro_21:

(Start: 2 @17147 has 109 MA's), (12, 17207), (22, 17255), (24, 17267), (35, 17339), (58, 17522), (71, 17696), (75, 17750), (76, 17783), (83, 17840), (84, 17843), (90, 17882), (96, 17945), (97, 17960), (98, 17969), (100, 17981), (101, 17984), (110, 18065), (111, 18074), (120, 18116),