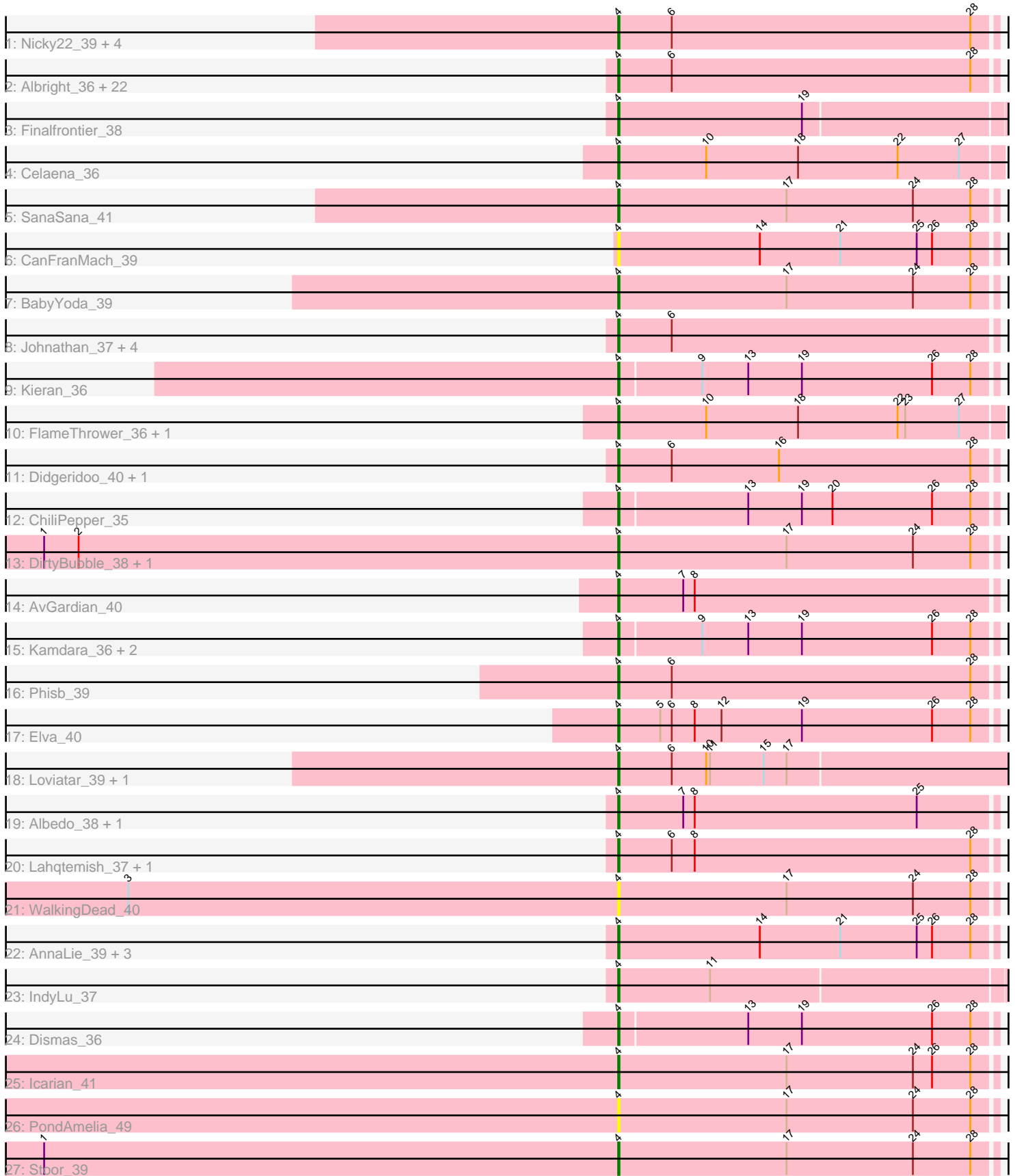


Pham 298423



Note: Tracks are now grouped by subcluster and scaled. Switching in subcluster is indicated by changes in track color. Track scale is now set by default to display the region 30 bp upstream of start 1 to 30 bp downstream of the last possible start. If this default region is judged to be packed too tightly with annotated starts, the track will be further scaled to only show that region of the ORF with annotated starts. This action will be indicated by adding "Zoomed" to the title. For starts, yellow indicates the location of called starts comprised solely of Glimmer/GeneMark auto-annotations, green indicates the location of called starts with at least 1 manual gene annotation.

Pham 298423 Report

This analysis was run 06/08/26 on database version 649.

Pham number 298423 has 68 members, 9 are drafts.

Phages represented in each track:

- Track 1 : Nicky22_39, Swervy_39, Slay_39, Lilo27_39, SarBear_38
- Track 2 : Albright_36, Softsoap_38, Jovita_39, Pecas_38, BubbaBear_37, Eula_39, CroZenni_38, MsUbiquitous_39, Bengal_39, Abigail_37, Arroyo_39, SansAfet_39, Cashington_36, TukTuk_39, AylexOG_40, Avocadoman_37, Burritobowl_38, DickRichards_37, Doobus_37, CupcakePrincess_39, QMacho_40, LimaBean_37, Jabb_39
- Track 3 : Finalfrontier_38
- Track 4 : Celaena_36
- Track 5 : SanaSana_41
- Track 6 : CanFranMach_39
- Track 7 : BabyYoda_39
- Track 8 : Johnathan_37, Kenzers_38, Lynlen_38, Milomuff_38, Solea_39
- Track 9 : Kieran_36
- Track 10 : FlameThrower_36, Katzastrophic_37
- Track 11 : Didgeridoo_40, BabyDaisy_37
- Track 12 : ChiliPepper_35
- Track 13 : DirtyBubble_38, Stromboli_39
- Track 14 : AvGardian_40
- Track 15 : Kamdara_36, Sharkboy_37, Rona_36
- Track 16 : Phisb_39
- Track 17 : Elva_40
- Track 18 : Loviatar_39, Akino08_39
- Track 19 : Albedo_38, SirBeanington_38
- Track 20 : Lahqtemish_37, PastaFagioli_37
- Track 21 : WalkingDead_40
- Track 22 : AnnaLie_39, PhigPhack_39, Kate33_38, BelmontSKP_39
- Track 23 : IndyLu_37
- Track 24 : Dismas_36
- Track 25 : Icarian_41
- Track 26 : PondAmelia_49
- Track 27 : Stoor_39

Summary of Final Annotations (See graph section above for start numbers):

The start number called the most often in the published annotations is 4, it was called in 59 of the 59 non-draft genes in the pham.

Genes that call this "Most Annotated" start:

- Abigail_37, Akino08_39, Albedo_38, Albright_36, AnnaLie_39, Arroyo_39, AvGardian_40, Avocadoman_37, AylexOG_40, BabyDaisy_37, BabyYoda_39, BelmontSKP_39, Bengal_39, BubbaBear_37, Burritobowl_38, CanFranMach_39, Cashington_36, Celaena_36, ChiliPepper_35, CroZenni_38, CupcakePrincess_39, DickRichards_37, Didgeridoo_40, DirtyBubble_38, Dismas_36, Doobus_37, Elva_40, Eula_39, Finalfrontier_38, FlameThrower_36, Icarian_41, IndyLu_37, Jabb_39, Johnathan_37, Jovita_39, Kamdara_36, Kate33_38, Katzastrophic_37, Kenzers_38, Kieran_36, Lahqtemish_37, Lilo27_39, LimaBean_37, Loviatar_39, Lynlen_38, Milomuff_38, MsUbiquitous_39, Nicky22_39, PastaFagioli_37, Pecas_38, PhigPhack_39, Phisb_39, PondAmelia_49, QMacho_40, Rona_36, SanaSana_41, SansAfet_39, SarBear_38, Sharkboy_37, SirBeanington_38, Slay_39, Softsoap_38, Solea_39, Stoor_39, Stromboli_39, Swervy_39, TukTuk_39, WalkingDead_40,

Genes that have the "Most Annotated" start but do not call it:

-

Genes that do not have the "Most Annotated" start:

-

Summary by start number:

Start 4:

- Found in 68 of 68 (100.0%) of genes in pham
- Manual Annotations of this start: 59 of 59
- Called 100.0% of time when present
- Phage (with cluster) where this start called: Abigail_37 (EB), Akino08_39 (EB), Albedo_38 (EB), Albright_36 (EB), AnnaLie_39 (EB), Arroyo_39 (EB), AvGardian_40 (EB), Avocadoman_37 (EB), AylexOG_40 (EB), BabyDaisy_37 (EB), BabyYoda_39 (EB), BelmontSKP_39 (EB), Bengal_39 (EB), BubbaBear_37 (EB), Burritobowl_38 (EB), CanFranMach_39 (EB), Cashington_36 (EB), Celaena_36 (EB), ChiliPepper_35 (EB), CroZenni_38 (EB), CupcakePrincess_39 (EB), DickRichards_37 (EB), Didgeridoo_40 (EB), DirtyBubble_38 (EB), Dismas_36 (EB), Doobus_37 (EB), Elva_40 (EB), Eula_39 (EB), Finalfrontier_38 (EB), FlameThrower_36 (EB), Icarian_41 (EB), IndyLu_37 (EB), Jabb_39 (EB), Johnathan_37 (EB), Jovita_39 (EB), Kamdara_36 (EB), Kate33_38 (EB), Katzastrophic_37 (EB), Kenzers_38 (EB), Kieran_36 (EB), Lahqtemish_37 (EB), Lilo27_39 (EB), LimaBean_37 (EB), Loviatar_39 (EB), Lynlen_38 (EB), Milomuff_38 (EB), MsUbiquitous_39 (EB), Nicky22_39 (EB), PastaFagioli_37 (EB), Pecas_38 (EB), PhigPhack_39 (EB), Phisb_39 (EB), PondAmelia_49 (EB), QMacho_40 (EB), Rona_36 (EB), SanaSana_41 (EB), SansAfet_39 (EB), SarBear_38 (EB), Sharkboy_37 (EB), SirBeanington_38 (EB), Slay_39 (EB), Softsoap_38 (EB), Solea_39 (EB), Stoor_39 (EB), Stromboli_39 (EB), Swervy_39 (EB), TukTuk_39 (EB), WalkingDead_40 (EB),

Summary by clusters:

There is one cluster represented in this pham: EB

Info for manual annotations of cluster EB:

- Start number 4 was manually annotated 59 times for cluster EB.

Gene Information:

Gene: Abigail_37 Start: 25578, Stop: 25871, Start Num: 4

Candidate Starts for Abigail_37:

(Start: 4 @25578 has 59 MA's), (6, 25620), (28, 25854),

Gene: Akino08_39 Start: 28005, Stop: 28313, Start Num: 4

Candidate Starts for Akino08_39:

(Start: 4 @28005 has 59 MA's), (6, 28047), (10, 28074), (11, 28077), (15, 28119), (17, 28137),

Gene: Albedo_38 Start: 26128, Stop: 26421, Start Num: 4

Candidate Starts for Albedo_38:

(Start: 4 @26128 has 59 MA's), (7, 26179), (8, 26188), (25, 26362),

Gene: Albright_36 Start: 25280, Stop: 25573, Start Num: 4

Candidate Starts for Albright_36:

(Start: 4 @25280 has 59 MA's), (6, 25322), (28, 25556),

Gene: AnnaLie_39 Start: 26401, Stop: 26694, Start Num: 4

Candidate Starts for AnnaLie_39:

(Start: 4 @26401 has 59 MA's), (14, 26512), (21, 26575), (25, 26635), (26, 26647), (28, 26677),

Gene: Arroyo_39 Start: 26439, Stop: 26732, Start Num: 4

Candidate Starts for Arroyo_39:

(Start: 4 @26439 has 59 MA's), (6, 26481), (28, 26715),

Gene: AvGardian_40 Start: 26572, Stop: 26865, Start Num: 4

Candidate Starts for AvGardian_40:

(Start: 4 @26572 has 59 MA's), (7, 26623), (8, 26632),

Gene: Avocadoman_37 Start: 25517, Stop: 25810, Start Num: 4

Candidate Starts for Avocadoman_37:

(Start: 4 @25517 has 59 MA's), (6, 25559), (28, 25793),

Gene: AylexOG_40 Start: 26474, Stop: 26767, Start Num: 4

Candidate Starts for AylexOG_40:

(Start: 4 @26474 has 59 MA's), (6, 26516), (28, 26750),

Gene: BabyDaisy_37 Start: 26040, Stop: 26333, Start Num: 4

Candidate Starts for BabyDaisy_37:

(Start: 4 @26040 has 59 MA's), (6, 26082), (16, 26166), (28, 26316),

Gene: BabyYoda_39 Start: 27185, Stop: 27478, Start Num: 4

Candidate Starts for BabyYoda_39:

(Start: 4 @27185 has 59 MA's), (17, 27317), (24, 27416), (28, 27461),

Gene: BelmontSKP_39 Start: 26401, Stop: 26694, Start Num: 4

Candidate Starts for BelmontSKP_39:

(Start: 4 @26401 has 59 MA's), (14, 26512), (21, 26575), (25, 26635), (26, 26647), (28, 26677),

Gene: Bengal_39 Start: 26029, Stop: 26322, Start Num: 4

Candidate Starts for Bengal_39:

(Start: 4 @26029 has 59 MA's), (6, 26071), (28, 26305),

Gene: BubbaBear_37 Start: 25973, Stop: 26266, Start Num: 4

Candidate Starts for BubbaBear_37:

(Start: 4 @25973 has 59 MA's), (6, 26015), (28, 26249),

Gene: Burritobowl_38 Start: 25974, Stop: 26267, Start Num: 4

Candidate Starts for Burritobowl_38:

(Start: 4 @25974 has 59 MA's), (6, 26016), (28, 26250),

Gene: CanFranMach_39 Start: 26059, Stop: 26352, Start Num: 4

Candidate Starts for CanFranMach_39:

(Start: 4 @26059 has 59 MA's), (14, 26170), (21, 26233), (25, 26293), (26, 26305), (28, 26335),

Gene: Cashington_36 Start: 25320, Stop: 25613, Start Num: 4

Candidate Starts for Cashington_36:

(Start: 4 @25320 has 59 MA's), (6, 25362), (28, 25596),

Gene: Celaena_36 Start: 26951, Stop: 27250, Start Num: 4

Candidate Starts for Celaena_36:

(Start: 4 @26951 has 59 MA's), (10, 27020), (18, 27092), (22, 27170), (27, 27218),

Gene: ChiliPepper_35 Start: 26408, Stop: 26698, Start Num: 4

Candidate Starts for ChiliPepper_35:

(Start: 4 @26408 has 59 MA's), (13, 26507), (19, 26549), (20, 26573), (26, 26651), (28, 26681),

Gene: CroZenni_38 Start: 25864, Stop: 26157, Start Num: 4

Candidate Starts for CroZenni_38:

(Start: 4 @25864 has 59 MA's), (6, 25906), (28, 26140),

Gene: CupcakePrincess_39 Start: 26162, Stop: 26455, Start Num: 4

Candidate Starts for CupcakePrincess_39:

(Start: 4 @26162 has 59 MA's), (6, 26204), (28, 26438),

Gene: DickRichards_37 Start: 26303, Stop: 26596, Start Num: 4

Candidate Starts for DickRichards_37:

(Start: 4 @26303 has 59 MA's), (6, 26345), (28, 26579),

Gene: Didgeridoo_40 Start: 26449, Stop: 26742, Start Num: 4

Candidate Starts for Didgeridoo_40:

(Start: 4 @26449 has 59 MA's), (6, 26491), (16, 26575), (28, 26725),

Gene: DirtyBubble_38 Start: 26833, Stop: 27126, Start Num: 4

Candidate Starts for DirtyBubble_38:

(1, 26383), (2, 26410), (Start: 4 @26833 has 59 MA's), (17, 26965), (24, 27064), (28, 27109),

Gene: Dismas_36 Start: 26579, Stop: 26869, Start Num: 4

Candidate Starts for Dismas_36:

(Start: 4 @26579 has 59 MA's), (13, 26678), (19, 26720), (26, 26822), (28, 26852),

Gene: Doobus_37 Start: 25684, Stop: 25977, Start Num: 4

Candidate Starts for Doobus_37:
(Start: 4 @25684 has 59 MA's), (6, 25726), (28, 25960),

Gene: Elva_40 Start: 26895, Stop: 27188, Start Num: 4
Candidate Starts for Elva_40:
(Start: 4 @26895 has 59 MA's), (5, 26928), (6, 26937), (8, 26955), (12, 26976), (19, 27039), (26, 27141), (28, 27171),

Gene: Eula_39 Start: 26075, Stop: 26368, Start Num: 4
Candidate Starts for Eula_39:
(Start: 4 @26075 has 59 MA's), (6, 26117), (28, 26351),

Gene: Finalfrontier_38 Start: 26687, Stop: 26986, Start Num: 4
Candidate Starts for Finalfrontier_38:
(Start: 4 @26687 has 59 MA's), (19, 26831),

Gene: FlameThrower_36 Start: 26401, Stop: 26700, Start Num: 4
Candidate Starts for FlameThrower_36:
(Start: 4 @26401 has 59 MA's), (10, 26470), (18, 26542), (22, 26620), (23, 26626), (27, 26668),

Gene: Icarian_41 Start: 27468, Stop: 27761, Start Num: 4
Candidate Starts for Icarian_41:
(Start: 4 @27468 has 59 MA's), (17, 27600), (24, 27699), (26, 27714), (28, 27744),

Gene: IndyLu_37 Start: 26001, Stop: 26300, Start Num: 4
Candidate Starts for IndyLu_37:
(Start: 4 @26001 has 59 MA's), (11, 26073),

Gene: Jabb_39 Start: 26162, Stop: 26455, Start Num: 4
Candidate Starts for Jabb_39:
(Start: 4 @26162 has 59 MA's), (6, 26204), (28, 26438),

Gene: Johnathan_37 Start: 25407, Stop: 25700, Start Num: 4
Candidate Starts for Johnathan_37:
(Start: 4 @25407 has 59 MA's), (6, 25449),

Gene: Jovita_39 Start: 26177, Stop: 26470, Start Num: 4
Candidate Starts for Jovita_39:
(Start: 4 @26177 has 59 MA's), (6, 26219), (28, 26453),

Gene: Kamdara_36 Start: 26584, Stop: 26874, Start Num: 4
Candidate Starts for Kamdara_36:
(Start: 4 @26584 has 59 MA's), (9, 26647), (13, 26683), (19, 26725), (26, 26827), (28, 26857),

Gene: Kate33_38 Start: 25773, Stop: 26066, Start Num: 4
Candidate Starts for Kate33_38:
(Start: 4 @25773 has 59 MA's), (14, 25884), (21, 25947), (25, 26007), (26, 26019), (28, 26049),

Gene: Katzastrophic_37 Start: 26530, Stop: 26829, Start Num: 4
Candidate Starts for Katzastrophic_37:
(Start: 4 @26530 has 59 MA's), (10, 26599), (18, 26671), (22, 26749), (23, 26755), (27, 26797),

Gene: Kenzers_38 Start: 26000, Stop: 26293, Start Num: 4

Candidate Starts for Kenzers_38:
(Start: 4 @26000 has 59 MA's), (6, 26042),

Gene: Kieran_36 Start: 26587, Stop: 26877, Start Num: 4
Candidate Starts for Kieran_36:
(Start: 4 @26587 has 59 MA's), (9, 26650), (13, 26686), (19, 26728), (26, 26830), (28, 26860),

Gene: Lahqtemish_37 Start: 26046, Stop: 26339, Start Num: 4
Candidate Starts for Lahqtemish_37:
(Start: 4 @26046 has 59 MA's), (6, 26088), (8, 26106), (28, 26322),

Gene: Lilo27_39 Start: 25985, Stop: 26278, Start Num: 4
Candidate Starts for Lilo27_39:
(Start: 4 @25985 has 59 MA's), (6, 26027), (28, 26261),

Gene: LimaBean_37 Start: 25456, Stop: 25749, Start Num: 4
Candidate Starts for LimaBean_37:
(Start: 4 @25456 has 59 MA's), (6, 25498), (28, 25732),

Gene: Loviatar_39 Start: 28020, Stop: 28328, Start Num: 4
Candidate Starts for Loviatar_39:
(Start: 4 @28020 has 59 MA's), (6, 28062), (10, 28089), (11, 28092), (15, 28134), (17, 28152),

Gene: Lynlen_38 Start: 26000, Stop: 26293, Start Num: 4
Candidate Starts for Lynlen_38:
(Start: 4 @26000 has 59 MA's), (6, 26042),

Gene: Milomuff_38 Start: 25877, Stop: 26170, Start Num: 4
Candidate Starts for Milomuff_38:
(Start: 4 @25877 has 59 MA's), (6, 25919),

Gene: MsUbiquitous_39 Start: 26162, Stop: 26455, Start Num: 4
Candidate Starts for MsUbiquitous_39:
(Start: 4 @26162 has 59 MA's), (6, 26204), (28, 26438),

Gene: Nicky22_39 Start: 26539, Stop: 26832, Start Num: 4
Candidate Starts for Nicky22_39:
(Start: 4 @26539 has 59 MA's), (6, 26581), (28, 26815),

Gene: PastaFagioli_37 Start: 26030, Stop: 26323, Start Num: 4
Candidate Starts for PastaFagioli_37:
(Start: 4 @26030 has 59 MA's), (6, 26072), (8, 26090), (28, 26306),

Gene: Pecas_38 Start: 26074, Stop: 26367, Start Num: 4
Candidate Starts for Pecas_38:
(Start: 4 @26074 has 59 MA's), (6, 26116), (28, 26350),

Gene: PhigPhack_39 Start: 25900, Stop: 26193, Start Num: 4
Candidate Starts for PhigPhack_39:
(Start: 4 @25900 has 59 MA's), (14, 26011), (21, 26074), (25, 26134), (26, 26146), (28, 26176),

Gene: Phisb_39 Start: 26133, Stop: 26426, Start Num: 4
Candidate Starts for Phisb_39:

(Start: 4 @26133 has 59 MA's), (6, 26175), (28, 26409),

Gene: PondAmelia_49 Start: 27000, Stop: 27293, Start Num: 4

Candidate Starts for PondAmelia_49:

(Start: 4 @27000 has 59 MA's), (17, 27132), (24, 27231), (28, 27276),

Gene: QMacho_40 Start: 26557, Stop: 26850, Start Num: 4

Candidate Starts for QMacho_40:

(Start: 4 @26557 has 59 MA's), (6, 26599), (28, 26833),

Gene: Rona_36 Start: 26570, Stop: 26860, Start Num: 4

Candidate Starts for Rona_36:

(Start: 4 @26570 has 59 MA's), (9, 26633), (13, 26669), (19, 26711), (26, 26813), (28, 26843),

Gene: SanaSana_41 Start: 27670, Stop: 27963, Start Num: 4

Candidate Starts for SanaSana_41:

(Start: 4 @27670 has 59 MA's), (17, 27802), (24, 27901), (28, 27946),

Gene: SansAfet_39 Start: 25987, Stop: 26280, Start Num: 4

Candidate Starts for SansAfet_39:

(Start: 4 @25987 has 59 MA's), (6, 26029), (28, 26263),

Gene: SarBear_38 Start: 25854, Stop: 26147, Start Num: 4

Candidate Starts for SarBear_38:

(Start: 4 @25854 has 59 MA's), (6, 25896), (28, 26130),

Gene: Sharkboy_37 Start: 26669, Stop: 26959, Start Num: 4

Candidate Starts for Sharkboy_37:

(Start: 4 @26669 has 59 MA's), (9, 26732), (13, 26768), (19, 26810), (26, 26912), (28, 26942),

Gene: SirBeanington_38 Start: 26175, Stop: 26468, Start Num: 4

Candidate Starts for SirBeanington_38:

(Start: 4 @26175 has 59 MA's), (7, 26226), (8, 26235), (25, 26409),

Gene: Slay_39 Start: 26535, Stop: 26828, Start Num: 4

Candidate Starts for Slay_39:

(Start: 4 @26535 has 59 MA's), (6, 26577), (28, 26811),

Gene: Softsoap_38 Start: 25898, Stop: 26191, Start Num: 4

Candidate Starts for Softsoap_38:

(Start: 4 @25898 has 59 MA's), (6, 25940), (28, 26174),

Gene: Solea_39 Start: 25877, Stop: 26170, Start Num: 4

Candidate Starts for Solea_39:

(Start: 4 @25877 has 59 MA's), (6, 25919),

Gene: Stoor_39 Start: 27339, Stop: 27632, Start Num: 4

Candidate Starts for Stoor_39:

(1, 26889), (Start: 4 @27339 has 59 MA's), (17, 27471), (24, 27570), (28, 27615),

Gene: Stromboli_39 Start: 27203, Stop: 27496, Start Num: 4

Candidate Starts for Stromboli_39:

(1, 26753), (2, 26780), (Start: 4 @27203 has 59 MA's), (17, 27335), (24, 27434), (28, 27479),

Gene: Swervy_39 Start: 26054, Stop: 26347, Start Num: 4

Candidate Starts for Swervy_39:

(Start: 4 @26054 has 59 MA's), (6, 26096), (28, 26330),

Gene: TukTuk_39 Start: 26125, Stop: 26418, Start Num: 4

Candidate Starts for TukTuk_39:

(Start: 4 @26125 has 59 MA's), (6, 26167), (28, 26401),

Gene: WalkingDead_40 Start: 27594, Stop: 27887, Start Num: 4

Candidate Starts for WalkingDead_40:

(3, 27210), (Start: 4 @27594 has 59 MA's), (17, 27726), (24, 27825), (28, 27870),