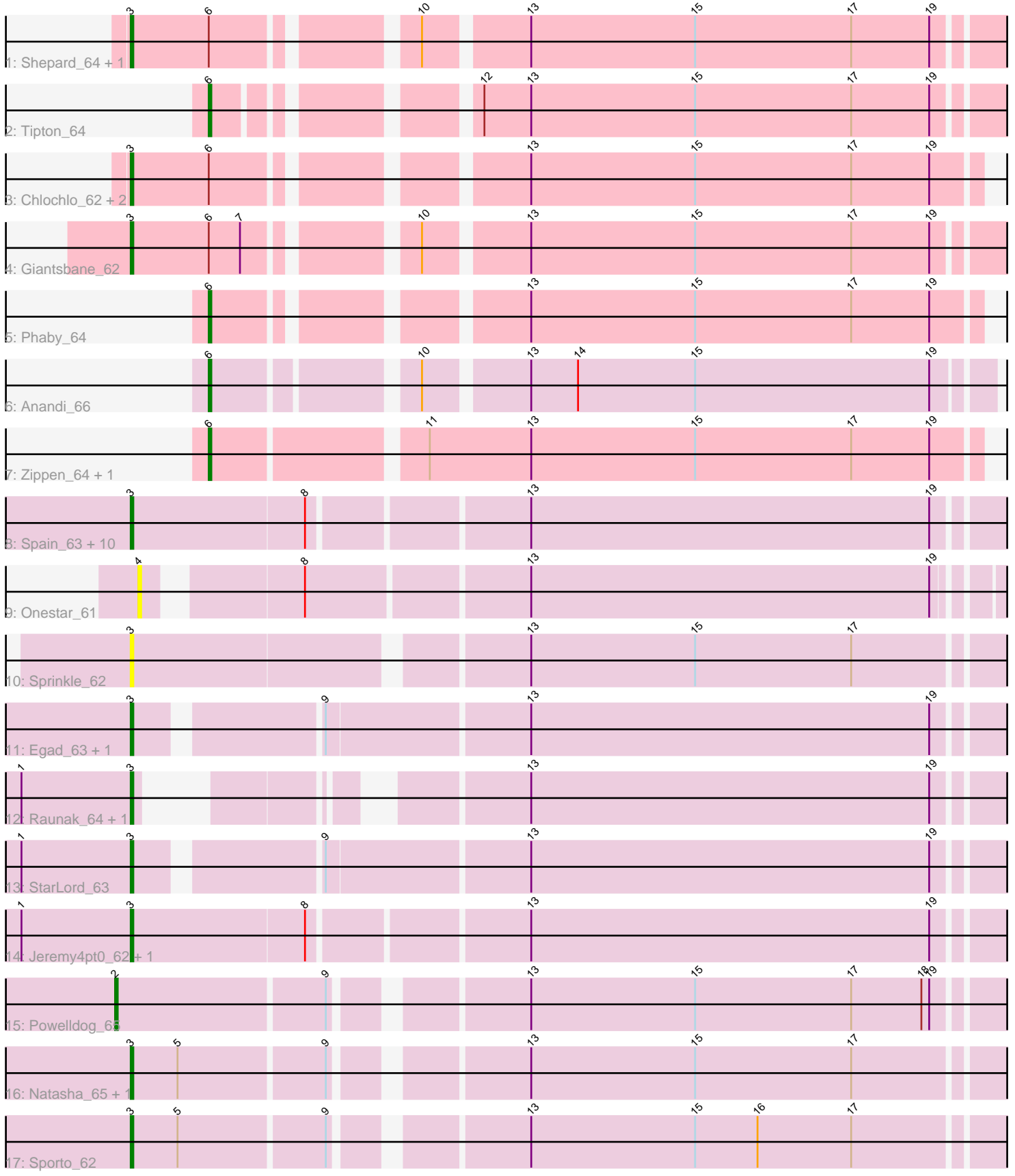


Pham 298436



Note: Tracks are now grouped by subcluster and scaled. Switching in subcluster is indicated by changes in track color. Track scale is now set by default to display the region 30 bp upstream of start 1 to 30 bp downstream of the last possible start. If this default region is judged to be packed too tightly with annotated starts, the track will be further scaled to only show that region of the ORF with annotated starts. This action will be indicated by adding "Zoomed" to the title. For starts, yellow indicates the location of called starts comprised solely of Glimmer/GeneMark auto-annotations, green indicates the location of called starts with at least 1 manual gene annotation.

Pham 298436 Report

This analysis was run 06/08/26 on database version 649.

Pham number 298436 has 35 members, 5 are drafts.

Phages represented in each track:

- Track 1 : Shepard_64, LilHuddy_63
- Track 2 : Tipton_64
- Track 3 : Chlochlo_62, Bouchard_62, Tokki_67
- Track 4 : Giantsbane_62
- Track 5 : Phaby_64
- Track 6 : Anandi_66
- Track 7 : Zippen_64, Inked_65
- Track 8 : Spain_63, Salk_63, Stayer_63, Sloopyjoe_63, Linda_63, DoctorPepper_62, BronxBay_63, Michelle_63, Boog_62, MrAaronian_63, Djungelskog_62
- Track 9 : Onestar_61
- Track 10 : Sprinkle_62
- Track 11 : Egad_63, ProfFrink_63
- Track 12 : Raunak_64, Shiba_62
- Track 13 : StarLord_63
- Track 14 : Jeremy4pt0_62, HerbBucket_61
- Track 15 : PowellDog_65
- Track 16 : Natasha_65, RustyBoy_66
- Track 17 : Sporto_62

Summary of Final Annotations (See graph section above for start numbers):

The start number called the most often in the published annotations is 3, it was called in 24 of the 30 non-draft genes in the pham.

Genes that call this "Most Annotated" start:

- Boog_62, Bouchard_62, BronxBay_63, Chlochlo_62, Djungelskog_62, DoctorPepper_62, Egad_63, Giantsbane_62, HerbBucket_61, Jeremy4pt0_62, LilHuddy_63, Linda_63, Michelle_63, MrAaronian_63, Natasha_65, ProfFrink_63, Raunak_64, RustyBoy_66, Salk_63, Shepard_64, Shiba_62, Sloopyjoe_63, Spain_63, Sporto_62, Sprinkle_62, StarLord_63, Stayer_63, Tokki_67,

Genes that have the "Most Annotated" start but do not call it:

-

Genes that do not have the "Most Annotated" start:

- Anandi_66, Inked_65, Onestar_61, Phaby_64, Powellldog_65, Tipton_64, Zippen_64,

Summary by start number:

Start 2:

- Found in 1 of 35 (2.9%) of genes in pham
- Manual Annotations of this start: 1 of 30
- Called 100.0% of time when present
- Phage (with cluster) where this start called: Powellldog_65 (AW),

Start 3:

- Found in 28 of 35 (80.0%) of genes in pham
- Manual Annotations of this start: 24 of 30
- Called 100.0% of time when present
- Phage (with cluster) where this start called: Boog_62 (AW), Bouchard_62 (AU2), BronxBay_63 (AW), Chlochlo_62 (AU2), Djungelskog_62 (AW), DoctorPepper_62 (AW), Egad_63 (AW), Giantsbane_62 (AU2), HerbBucket_61 (AW), Jeremy4pt0_62 (AW), LilHuddy_63 (AU2), Linda_63 (AW), Michelle_63 (AW), MrAaronian_63 (AW), Natasha_65 (AW), ProfFrink_63 (AW), Raunak_64 (AW), RustyBoy_66 (AW), Salk_63 (AW), Shepard_64 (AU2), Shiba_62 (AW), Sloopyjoe_63 (AW), Spain_63 (AW), Sporto_62 (AW), Sprinkle_62 (AW), StarLord_63 (AW), Stayer_63 (AW), Tokki_67 (AU2),

Start 4:

- Found in 1 of 35 (2.9%) of genes in pham
- No Manual Annotations of this start.
- Called 100.0% of time when present
- Phage (with cluster) where this start called: Onestar_61 (AW),

Start 6:

- Found in 11 of 35 (31.4%) of genes in pham
- Manual Annotations of this start: 5 of 30
- Called 45.5% of time when present
- Phage (with cluster) where this start called: Anandi_66 (AU4), Inked_65 (AU7), Phaby_64 (AU2), Tipton_64 (AU2), Zippen_64 (AU7),

Summary by clusters:

There are 4 clusters represented in this pham: AU2, AU7, AW, AU4,

Info for manual annotations of cluster AU2:

- Start number 3 was manually annotated 6 times for cluster AU2.
- Start number 6 was manually annotated 2 times for cluster AU2.

Info for manual annotations of cluster AU4:

- Start number 6 was manually annotated 1 time for cluster AU4.

Info for manual annotations of cluster AU7:

- Start number 6 was manually annotated 2 times for cluster AU7.

Info for manual annotations of cluster AW:

- Start number 2 was manually annotated 1 time for cluster AW.
- Start number 3 was manually annotated 18 times for cluster AW.

Gene Information:

Gene: Anandi_66 Start: 43587, Stop: 43865, Start Num: 6

Candidate Starts for Anandi_66:

(Start: 6 @43587 has 5 MA's), (10, 43656), (13, 43692), (14, 43710), (15, 43755), (19, 43845),

Gene: Boog_62 Start: 41296, Stop: 41628, Start Num: 3

Candidate Starts for Boog_62:

(Start: 3 @41296 has 24 MA's), (8, 41362), (13, 41440), (19, 41593),

Gene: Bouchard_62 Start: 43508, Stop: 43810, Start Num: 3

Candidate Starts for Bouchard_62:

(Start: 3 @43508 has 24 MA's), (Start: 6 @43538 has 5 MA's), (13, 43640), (15, 43703), (17, 43763), (19, 43793),

Gene: BronxBay_63 Start: 41552, Stop: 41884, Start Num: 3

Candidate Starts for BronxBay_63:

(Start: 3 @41552 has 24 MA's), (8, 41618), (13, 41696), (19, 41849),

Gene: Chlochlo_62 Start: 43034, Stop: 43336, Start Num: 3

Candidate Starts for Chlochlo_62:

(Start: 3 @43034 has 24 MA's), (Start: 6 @43064 has 5 MA's), (13, 43166), (15, 43229), (17, 43289), (19, 43319),

Gene: Djungelskog_62 Start: 41551, Stop: 41883, Start Num: 3

Candidate Starts for Djungelskog_62:

(Start: 3 @41551 has 24 MA's), (8, 41617), (13, 41695), (19, 41848),

Gene: DoctorPepper_62 Start: 41256, Stop: 41588, Start Num: 3

Candidate Starts for DoctorPepper_62:

(Start: 3 @41256 has 24 MA's), (8, 41322), (13, 41400), (19, 41553),

Gene: Egad_63 Start: 41553, Stop: 41879, Start Num: 3

Candidate Starts for Egad_63:

(Start: 3 @41553 has 24 MA's), (9, 41616), (13, 41691), (19, 41844),

Gene: Giantsbane_62 Start: 42221, Stop: 42541, Start Num: 3

Candidate Starts for Giantsbane_62:

(Start: 3 @42221 has 24 MA's), (Start: 6 @42251 has 5 MA's), (7, 42263), (10, 42317), (13, 42353), (15, 42416), (17, 42476), (19, 42506),

Gene: HerbBucket_61 Start: 41293, Stop: 41610, Start Num: 3

Candidate Starts for HerbBucket_61:

(1, 41251), (Start: 3 @41293 has 24 MA's), (8, 41359), (13, 41422), (19, 41575),

Gene: Inked_65 Start: 44293, Stop: 44580, Start Num: 6

Candidate Starts for Inked_65:

(Start: 6 @44293 has 5 MA's), (11, 44368), (13, 44407), (15, 44470), (17, 44530), (19, 44560),

Gene: Jeremy4pt0_62 Start: 41251, Stop: 41583, Start Num: 3

Candidate Starts for Jeremy4pt0_62:

(1, 41209), (Start: 3 @41251 has 24 MA's), (8, 41317), (13, 41395), (19, 41548),

Gene: LilHuddy_63 Start: 43331, Stop: 43651, Start Num: 3

Candidate Starts for LilHuddy_63:

(Start: 3 @43331 has 24 MA's), (Start: 6 @43361 has 5 MA's), (10, 43427), (13, 43463), (15, 43526), (17, 43586), (19, 43616),

Gene: Linda_63 Start: 41549, Stop: 41881, Start Num: 3

Candidate Starts for Linda_63:

(Start: 3 @41549 has 24 MA's), (8, 41615), (13, 41693), (19, 41846),

Gene: Michelle_63 Start: 41551, Stop: 41883, Start Num: 3

Candidate Starts for Michelle_63:

(Start: 3 @41551 has 24 MA's), (8, 41617), (13, 41695), (19, 41848),

Gene: MrAaronian_63 Start: 41551, Stop: 41883, Start Num: 3

Candidate Starts for MrAaronian_63:

(Start: 3 @41551 has 24 MA's), (8, 41617), (13, 41695), (19, 41848),

Gene: Natasha_65 Start: 41511, Stop: 41825, Start Num: 3

Candidate Starts for Natasha_65:

(Start: 3 @41511 has 24 MA's), (5, 41529), (9, 41583), (13, 41646), (15, 41709), (17, 41769),

Gene: Onestar_61 Start: 41324, Stop: 41641, Start Num: 4

Candidate Starts for Onestar_61:

(4, 41324), (8, 41375), (13, 41456), (19, 41609),

Gene: Phaby_64 Start: 43940, Stop: 44212, Start Num: 6

Candidate Starts for Phaby_64:

(Start: 6 @43940 has 5 MA's), (13, 44042), (15, 44105), (17, 44165), (19, 44195),

Gene: Powelldog_65 Start: 41968, Stop: 42291, Start Num: 2

Candidate Starts for Powelldog_65:

(Start: 2 @41968 has 1 MA's), (9, 42046), (13, 42109), (15, 42172), (17, 42232), (18, 42259), (19, 42262),

Gene: ProfFrink_63 Start: 41552, Stop: 41878, Start Num: 3

Candidate Starts for ProfFrink_63:

(Start: 3 @41552 has 24 MA's), (9, 41615), (13, 41690), (19, 41843),

Gene: Raunak_64 Start: 41249, Stop: 41539, Start Num: 3

Candidate Starts for Raunak_64:

(1, 41207), (Start: 3 @41249 has 24 MA's), (13, 41351), (19, 41504),

Gene: RustyBoy_66 Start: 41710, Stop: 42024, Start Num: 3

Candidate Starts for RustyBoy_66:

(Start: 3 @41710 has 24 MA's), (5, 41728), (9, 41782), (13, 41845), (15, 41908), (17, 41968),

Gene: Salk_63 Start: 41549, Stop: 41881, Start Num: 3

Candidate Starts for Salk_63:

(Start: 3 @41549 has 24 MA's), (8, 41615), (13, 41693), (19, 41846),

Gene: Shepard_64 Start: 43190, Stop: 43510, Start Num: 3

Candidate Starts for Shepard_64:

(Start: 3 @43190 has 24 MA's), (Start: 6 @43220 has 5 MA's), (10, 43286), (13, 43322), (15, 43385), (17, 43445), (19, 43475),

Gene: Shiba_62 Start: 41249, Stop: 41539, Start Num: 3

Candidate Starts for Shiba_62:

(1, 41207), (Start: 3 @41249 has 24 MA's), (13, 41351), (19, 41504),

Gene: Sloopyjoe_63 Start: 41553, Stop: 41885, Start Num: 3

Candidate Starts for Sloopyjoe_63:

(Start: 3 @41553 has 24 MA's), (8, 41619), (13, 41697), (19, 41850),

Gene: Spain_63 Start: 41551, Stop: 41883, Start Num: 3

Candidate Starts for Spain_63:

(Start: 3 @41551 has 24 MA's), (8, 41617), (13, 41695), (19, 41848),

Gene: Sporto_62 Start: 42677, Stop: 42991, Start Num: 3

Candidate Starts for Sporto_62:

(Start: 3 @42677 has 24 MA's), (5, 42695), (9, 42749), (13, 42812), (15, 42875), (16, 42899), (17, 42935),

Gene: Sprinkle_62 Start: 41712, Stop: 42032, Start Num: 3

Candidate Starts for Sprinkle_62:

(Start: 3 @41712 has 24 MA's), (13, 41853), (15, 41916), (17, 41976),

Gene: StarLord_63 Start: 41552, Stop: 41878, Start Num: 3

Candidate Starts for StarLord_63:

(1, 41510), (Start: 3 @41552 has 24 MA's), (9, 41615), (13, 41690), (19, 41843),

Gene: Stayer_63 Start: 41549, Stop: 41881, Start Num: 3

Candidate Starts for Stayer_63:

(Start: 3 @41549 has 24 MA's), (8, 41615), (13, 41693), (19, 41846),

Gene: Tipton_64 Start: 43711, Stop: 43998, Start Num: 6

Candidate Starts for Tipton_64:

(Start: 6 @43711 has 5 MA's), (12, 43792), (13, 43810), (15, 43873), (17, 43933), (19, 43963),

Gene: Tokki_67 Start: 43544, Stop: 43864, Start Num: 3

Candidate Starts for Tokki_67:

(Start: 3 @43544 has 24 MA's), (Start: 6 @43574 has 5 MA's), (13, 43676), (15, 43739), (17, 43799), (19, 43829),

Gene: Zippen_64 Start: 43993, Stop: 44277, Start Num: 6

Candidate Starts for Zippen_64:

(Start: 6 @43993 has 5 MA's), (11, 44068), (13, 44107), (15, 44170), (17, 44230), (19, 44260),