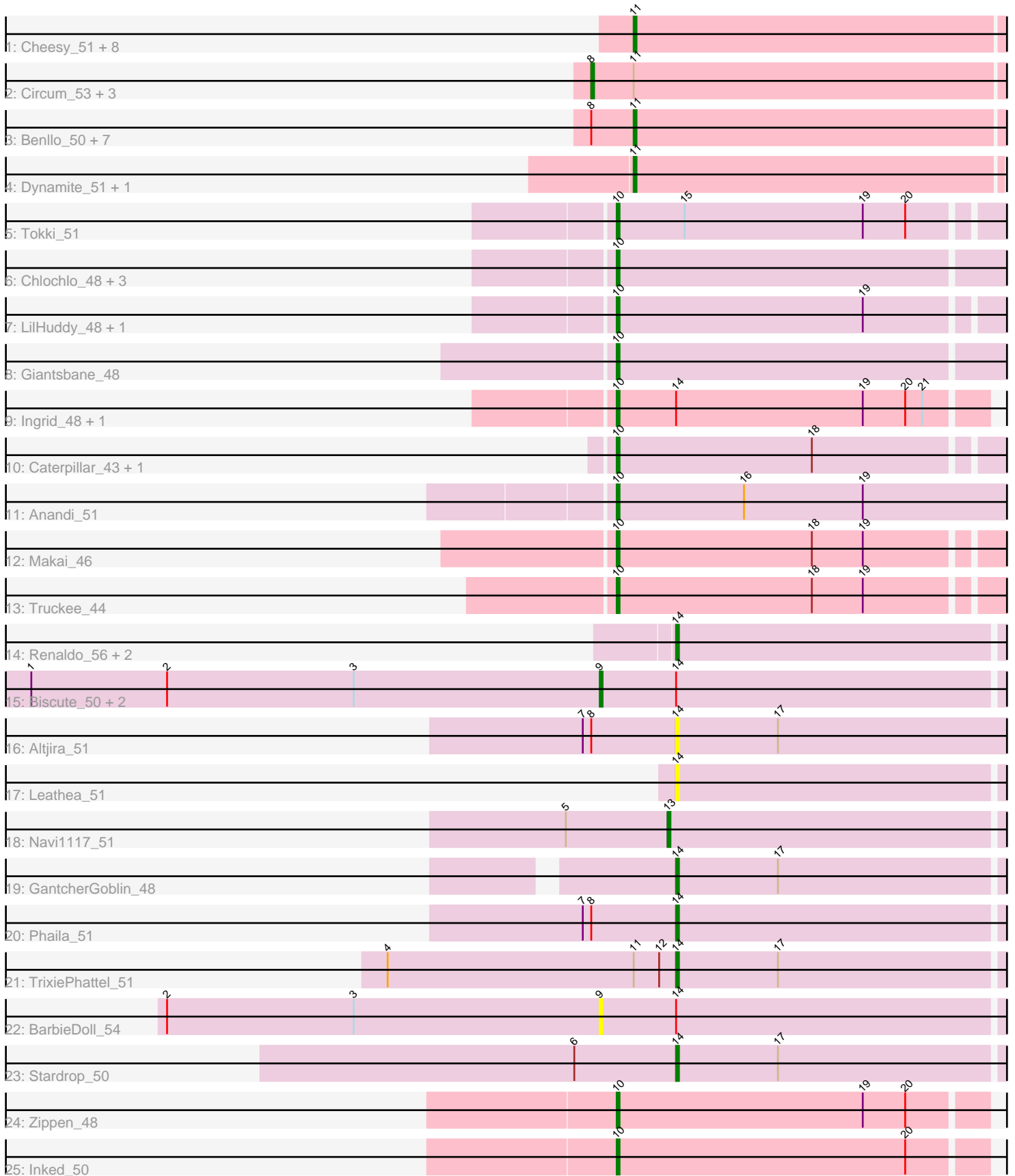


Pham 298517



Note: Tracks are now grouped by subcluster and scaled. Switching in subcluster is indicated by changes in track color. Track scale is now set by default to display the region 30 bp upstream of start 1 to 30 bp downstream of the last possible start. If this default region is judged to be packed too tightly with annotated starts, the track will be further scaled to only show that region of the ORF with annotated starts. This action will be indicated by adding "Zoomed" to the title. For starts, yellow indicates the location of called starts comprised solely of Glimmer/GeneMark auto-annotations, green indicates the location of called starts with at least 1 manual gene annotation.

Pham 298517 Report

This analysis was run 06/08/26 on database version 649.

Pham number 298517 has 54 members, 8 are drafts.

Phages represented in each track:

- Track 1 : Cheesy_51, Xenomorph_48, Bowling_51, Elsa_51, Correa_49, Arcadia_51, Tribby_52, Nason_51, YoshiYama_51
- Track 2 : Circum_53, Hankly_50, Mudcat_48, Mooshroom_53
- Track 3 : Benllo_50, JEGGS_50, BenitoAntonio_51, Heisenberger_50, KeaneyLin_50, Stardom_48, Kardesai_52, GoCrazy_50
- Track 4 : Dynamite_51, NapoleonB_51
- Track 5 : Tokki_51
- Track 6 : Chlochlo_48, Bouchard_47, Tipton_50, Shepard_50
- Track 7 : LilHuddy_48, Phaby_49
- Track 8 : Giantsbane_48
- Track 9 : Ingrid_48, Loretta_48
- Track 10 : Caterpillar_43, MediumFry_44
- Track 11 : Anandi_51
- Track 12 : Makai_46
- Track 13 : Truckee_44
- Track 14 : Renaldo_56, Lewando_53, Barbonzobean_56
- Track 15 : Biscute_50, Muglass_52, Kinny_53
- Track 16 : Altjira_51
- Track 17 : Leathea_51
- Track 18 : Navi1117_51
- Track 19 : GantcherGoblin_48
- Track 20 : Phaila_51
- Track 21 : TrixiePhattel_51
- Track 22 : BarbieDoll_54
- Track 23 : Stardrop_50
- Track 24 : Zippen_48
- Track 25 : Inked_50

Summary of Final Annotations (See graph section above for start numbers):

The start number called the most often in the published annotations is 10, it was called in 17 of the 46 non-draft genes in the pham.

Genes that call this "Most Annotated" start:

- Anandi_51, Bouchard_47, Caterpillar_43, Chlochlo_48, Giantsbane_48, Ingrid_48, Inked_50, LilHuddy_48, Loretta_48, Makai_46, MediumFry_44, Phaby_49, Shepard_50, Tipton_50, Tokki_51, Truckee_44, Zippen_48,

Genes that have the "Most Annotated" start but do not call it:

-

Genes that do not have the "Most Annotated" start:

- Altjira_51, Arcadia_51, BarbieDoll_54, Barbonzobean_56, BenitoAntonio_51, Benllo_50, Biscute_50, Bowling_51, Cheesy_51, Circum_53, Correa_49, Dynamite_51, Elsa_51, GantcherGoblin_48, GoCrazy_50, Hankly_50, Heisenberger_50, JEGGS_50, Kardesai_52, KeaneyLin_50, Kinny_53, Leathea_51, Lewando_53, Mooshroom_53, Mudcat_48, Muglass_52, NapoleonB_51, Nason_51, Navi1117_51, Phaila_51, Renaldo_56, Stardom_48, Stardrop_50, Tribby_52, TrixiePhattel_51, Xenomorph_48, YoshiYama_51,

Summary by start number:

Start 8:

- Found in 14 of 54 (25.9%) of genes in pham
- Manual Annotations of this start: 4 of 46
- Called 28.6% of time when present
- Phage (with cluster) where this start called: Circum_53 (AM), Hankly_50 (AM), Mooshroom_53 (AM), Mudcat_48 (AM),

Start 9:

- Found in 4 of 54 (7.4%) of genes in pham
- Manual Annotations of this start: 2 of 46
- Called 100.0% of time when present
- Phage (with cluster) where this start called: BarbieDoll_54 (AU6), Biscute_50 (AU6), Kinny_53 (AU6), Muglass_52 (AU6),

Start 10:

- Found in 17 of 54 (31.5%) of genes in pham
- Manual Annotations of this start: 17 of 46
- Called 100.0% of time when present
- Phage (with cluster) where this start called: Anandi_51 (AU4), Bouchard_47 (AU2), Caterpillar_43 (AU4), Chlochlo_48 (AU2), Giantsbane_48 (AU2), Ingrid_48 (AU3), Inked_50 (AU7), LilHuddy_48 (AU2), Loretta_48 (AU3), Makai_46 (AU5), MediumFry_44 (AU4), Phaby_49 (AU2), Shepard_50 (AU2), Tipton_50 (AU2), Tokki_51 (AU2), Truckee_44 (AU5), Zippen_48 (AU7),

Start 11:

- Found in 24 of 54 (44.4%) of genes in pham
- Manual Annotations of this start: 17 of 46
- Called 79.2% of time when present
- Phage (with cluster) where this start called: Arcadia_51 (AM), BenitoAntonio_51 (AM), Benllo_50 (AM), Bowling_51 (AM), Cheesy_51 (AM), Correa_49 (AM), Dynamite_51 (AM), Elsa_51 (AM), GoCrazy_50 (AM), Heisenberger_50 (AM), JEGGS_50 (AM), Kardesai_52 (AM), KeaneyLin_50 (AM), NapoleonB_51 (AM), Nason_51 (AM), Stardom_48 (AM), Tribby_52 (AM), Xenomorph_48 (AM), YoshiYama_51 (AM),

Start 13:

- Found in 1 of 54 (1.9%) of genes in pham
- Manual Annotations of this start: 1 of 46
- Called 100.0% of time when present
- Phage (with cluster) where this start called: Navi1117_51 (AU6),

Start 14:

- Found in 15 of 54 (27.8%) of genes in pham
- Manual Annotations of this start: 5 of 46
- Called 60.0% of time when present
- Phage (with cluster) where this start called: Altjira_51 (AU6), Barbonzobean_56 (AU6), GantcherGoblin_48 (AU6), Leathea_51 (AU6), Lewando_53 (AU6), Phaila_51 (AU6), Renaldo_56 (AU6), Stardrop_50 (AU6), TrixiePhattel_51 (AU6),

Summary by clusters:

There are 7 clusters represented in this pham: AM, AU3, AU2, AU5, AU4, AU7, AU6,

Info for manual annotations of cluster AM:

- Start number 8 was manually annotated 4 times for cluster AM.
- Start number 11 was manually annotated 17 times for cluster AM.

Info for manual annotations of cluster AU2:

- Start number 10 was manually annotated 8 times for cluster AU2.

Info for manual annotations of cluster AU3:

- Start number 10 was manually annotated 2 times for cluster AU3.

Info for manual annotations of cluster AU4:

- Start number 10 was manually annotated 3 times for cluster AU4.

Info for manual annotations of cluster AU5:

- Start number 10 was manually annotated 2 times for cluster AU5.

Info for manual annotations of cluster AU6:

- Start number 9 was manually annotated 2 times for cluster AU6.
- Start number 13 was manually annotated 1 time for cluster AU6.
- Start number 14 was manually annotated 5 times for cluster AU6.

Info for manual annotations of cluster AU7:

- Start number 10 was manually annotated 2 times for cluster AU7.

Gene Information:

Gene: Altjira_51 Start: 34432, Stop: 34554, Start Num: 14

Candidate Starts for Altjira_51:

(7, 34399), (Start: 8 @34402 has 4 MA's), (Start: 14 @34432 has 5 MA's), (17, 34468),

Gene: Anandi_51 Start: 34943, Stop: 35086, Start Num: 10

Candidate Starts for Anandi_51:

(Start: 10 @34943 has 17 MA's), (16, 34988), (19, 35030),

Gene: Arcadia_51 Start: 33107, Stop: 33238, Start Num: 11
Candidate Starts for Arcadia_51:
(Start: 11 @33107 has 17 MA's),

Gene: BarbieDoll_54 Start: 34859, Stop: 34999, Start Num: 9
Candidate Starts for BarbieDoll_54:
(2, 34706), (3, 34772), (Start: 9 @34859 has 2 MA's), (Start: 14 @34886 has 5 MA's),

Gene: Barbonzobean_56 Start: 35146, Stop: 35265, Start Num: 14
Candidate Starts for Barbonzobean_56:
(Start: 14 @35146 has 5 MA's),

Gene: BenitoAntonio_51 Start: 32641, Stop: 32775, Start Num: 11
Candidate Starts for BenitoAntonio_51:
(Start: 8 @32626 has 4 MA's), (Start: 11 @32641 has 17 MA's),

Gene: Benllo_50 Start: 33319, Stop: 33453, Start Num: 11
Candidate Starts for Benllo_50:
(Start: 8 @33304 has 4 MA's), (Start: 11 @33319 has 17 MA's),

Gene: Biscute_50 Start: 34511, Stop: 34651, Start Num: 9
Candidate Starts for Biscute_50:
(1, 34310), (2, 34358), (3, 34424), (Start: 9 @34511 has 2 MA's), (Start: 14 @34538 has 5 MA's),

Gene: Bouchard_47 Start: 34638, Stop: 34778, Start Num: 10
Candidate Starts for Bouchard_47:
(Start: 10 @34638 has 17 MA's),

Gene: Bowling_51 Start: 32852, Stop: 32983, Start Num: 11
Candidate Starts for Bowling_51:
(Start: 11 @32852 has 17 MA's),

Gene: Caterpillar_43 Start: 33489, Stop: 33626, Start Num: 10
Candidate Starts for Caterpillar_43:
(Start: 10 @33489 has 17 MA's), (18, 33558),

Gene: Cheesy_51 Start: 32828, Stop: 32959, Start Num: 11
Candidate Starts for Cheesy_51:
(Start: 11 @32828 has 17 MA's),

Gene: Chlochlo_48 Start: 34382, Stop: 34522, Start Num: 10
Candidate Starts for Chlochlo_48:
(Start: 10 @34382 has 17 MA's),

Gene: Circum_53 Start: 33495, Stop: 33644, Start Num: 8
Candidate Starts for Circum_53:
(Start: 8 @33495 has 4 MA's), (Start: 11 @33510 has 17 MA's),

Gene: Correa_49 Start: 31974, Stop: 32105, Start Num: 11
Candidate Starts for Correa_49:
(Start: 11 @31974 has 17 MA's),

Gene: Dynamite_51 Start: 33040, Stop: 33168, Start Num: 11
Candidate Starts for Dynamite_51:
(Start: 11 @33040 has 17 MA's),

Gene: Elsa_51 Start: 33107, Stop: 33238, Start Num: 11
Candidate Starts for Elsa_51:
(Start: 11 @33107 has 17 MA's),

Gene: GantcherGoblin_48 Start: 33220, Stop: 33339, Start Num: 14
Candidate Starts for GantcherGoblin_48:
(Start: 14 @33220 has 5 MA's), (17, 33256),

Gene: Giantsbane_48 Start: 33565, Stop: 33705, Start Num: 10
Candidate Starts for Giantsbane_48:
(Start: 10 @33565 has 17 MA's),

Gene: GoCrazy_50 Start: 32975, Stop: 33109, Start Num: 11
Candidate Starts for GoCrazy_50:
(Start: 8 @32960 has 4 MA's), (Start: 11 @32975 has 17 MA's),

Gene: Hankly_50 Start: 32234, Stop: 32383, Start Num: 8
Candidate Starts for Hankly_50:
(Start: 8 @32234 has 4 MA's), (Start: 11 @32249 has 17 MA's),

Gene: Heisenberger_50 Start: 32530, Stop: 32664, Start Num: 11
Candidate Starts for Heisenberger_50:
(Start: 8 @32515 has 4 MA's), (Start: 11 @32530 has 17 MA's),

Gene: Ingrid_48 Start: 34313, Stop: 34441, Start Num: 10
Candidate Starts for Ingrid_48:
(Start: 10 @34313 has 17 MA's), (Start: 14 @34334 has 5 MA's), (19, 34400), (20, 34415), (21, 34421),

Gene: Inked_50 Start: 35444, Stop: 35572, Start Num: 10
Candidate Starts for Inked_50:
(Start: 10 @35444 has 17 MA's), (20, 35546),

Gene: JEGGS_50 Start: 32585, Stop: 32719, Start Num: 11
Candidate Starts for JEGGS_50:
(Start: 8 @32570 has 4 MA's), (Start: 11 @32585 has 17 MA's),

Gene: Kardesai_52 Start: 33219, Stop: 33353, Start Num: 11
Candidate Starts for Kardesai_52:
(Start: 8 @33204 has 4 MA's), (Start: 11 @33219 has 17 MA's),

Gene: KeaneyLin_50 Start: 32975, Stop: 33109, Start Num: 11
Candidate Starts for KeaneyLin_50:
(Start: 8 @32960 has 4 MA's), (Start: 11 @32975 has 17 MA's),

Gene: Kinny_53 Start: 35354, Stop: 35494, Start Num: 9
Candidate Starts for Kinny_53:
(1, 35153), (2, 35201), (3, 35267), (Start: 9 @35354 has 2 MA's), (Start: 14 @35381 has 5 MA's),

Gene: Leathea_51 Start: 33316, Stop: 33435, Start Num: 14

Candidate Starts for Leathea_51:
(Start: 14 @33316 has 5 MA's),

Gene: Lewando_53 Start: 34888, Stop: 35001, Start Num: 14
Candidate Starts for Lewando_53:
(Start: 14 @34888 has 5 MA's),

Gene: LilHuddy_48 Start: 34521, Stop: 34658, Start Num: 10
Candidate Starts for LilHuddy_48:
(Start: 10 @34521 has 17 MA's), (19, 34608),

Gene: Loretta_48 Start: 34313, Stop: 34441, Start Num: 10
Candidate Starts for Loretta_48:
(Start: 10 @34313 has 17 MA's), (Start: 14 @34334 has 5 MA's), (19, 34400), (20, 34415), (21, 34421),

Gene: Makai_46 Start: 34498, Stop: 34635, Start Num: 10
Candidate Starts for Makai_46:
(Start: 10 @34498 has 17 MA's), (18, 34567), (19, 34585),

Gene: MediumFry_44 Start: 33794, Stop: 33931, Start Num: 10
Candidate Starts for MediumFry_44:
(Start: 10 @33794 has 17 MA's), (18, 33863),

Gene: Mooshroom_53 Start: 33204, Stop: 33353, Start Num: 8
Candidate Starts for Mooshroom_53:
(Start: 8 @33204 has 4 MA's), (Start: 11 @33219 has 17 MA's),

Gene: Mudcat_48 Start: 33928, Stop: 34077, Start Num: 8
Candidate Starts for Mudcat_48:
(Start: 8 @33928 has 4 MA's), (Start: 11 @33943 has 17 MA's),

Gene: Muglass_52 Start: 34415, Stop: 34555, Start Num: 9
Candidate Starts for Muglass_52:
(1, 34214), (2, 34262), (3, 34328), (Start: 9 @34415 has 2 MA's), (Start: 14 @34442 has 5 MA's),

Gene: NapoleonB_51 Start: 33040, Stop: 33168, Start Num: 11
Candidate Starts for NapoleonB_51:
(Start: 11 @33040 has 17 MA's),

Gene: Nason_51 Start: 33107, Stop: 33238, Start Num: 11
Candidate Starts for Nason_51:
(Start: 11 @33107 has 17 MA's),

Gene: Navi1117_51 Start: 33929, Stop: 34051, Start Num: 13
Candidate Starts for Navi1117_51:
(5, 33893), (Start: 13 @33929 has 1 MA's),

Gene: Phaby_49 Start: 35065, Stop: 35202, Start Num: 10
Candidate Starts for Phaby_49:
(Start: 10 @35065 has 17 MA's), (19, 35152),

Gene: Phaila_51 Start: 33313, Stop: 33432, Start Num: 14
Candidate Starts for Phaila_51:

(7, 33280), (Start: 8 @33283 has 4 MA's), (Start: 14 @33313 has 5 MA's),

Gene: Renaldo_56 Start: 35197, Stop: 35310, Start Num: 14
Candidate Starts for Renaldo_56:
(Start: 14 @35197 has 5 MA's),

Gene: Shepard_50 Start: 34596, Stop: 34736, Start Num: 10
Candidate Starts for Shepard_50:
(Start: 10 @34596 has 17 MA's),

Gene: Stardom_48 Start: 31711, Stop: 31845, Start Num: 11
Candidate Starts for Stardom_48:
(Start: 8 @31696 has 4 MA's), (Start: 11 @31711 has 17 MA's),

Gene: Stardrop_50 Start: 33937, Stop: 34056, Start Num: 14
Candidate Starts for Stardrop_50:
(6, 33901), (Start: 14 @33937 has 5 MA's), (17, 33973),

Gene: Tipton_50 Start: 35041, Stop: 35181, Start Num: 10
Candidate Starts for Tipton_50:
(Start: 10 @35041 has 17 MA's),

Gene: Tokki_51 Start: 34693, Stop: 34830, Start Num: 10
Candidate Starts for Tokki_51:
(Start: 10 @34693 has 17 MA's), (15, 34717), (19, 34780), (20, 34795),

Gene: Tribby_52 Start: 33045, Stop: 33176, Start Num: 11
Candidate Starts for Tribby_52:
(Start: 11 @33045 has 17 MA's),

Gene: TrixiePhattel_51 Start: 33340, Stop: 33459, Start Num: 14
Candidate Starts for TrixiePhattel_51:
(4, 33238), (Start: 11 @33325 has 17 MA's), (12, 33334), (Start: 14 @33340 has 5 MA's), (17, 33376),

Gene: Truckee_44 Start: 34288, Stop: 34425, Start Num: 10
Candidate Starts for Truckee_44:
(Start: 10 @34288 has 17 MA's), (18, 34357), (19, 34375),

Gene: Xenomorph_48 Start: 32778, Stop: 32909, Start Num: 11
Candidate Starts for Xenomorph_48:
(Start: 11 @32778 has 17 MA's),

Gene: YoshiYama_51 Start: 33102, Stop: 33233, Start Num: 11
Candidate Starts for YoshiYama_51:
(Start: 11 @33102 has 17 MA's),

Gene: Zippen_48 Start: 35143, Stop: 35271, Start Num: 10
Candidate Starts for Zippen_48:
(Start: 10 @35143 has 17 MA's), (19, 35230), (20, 35245),