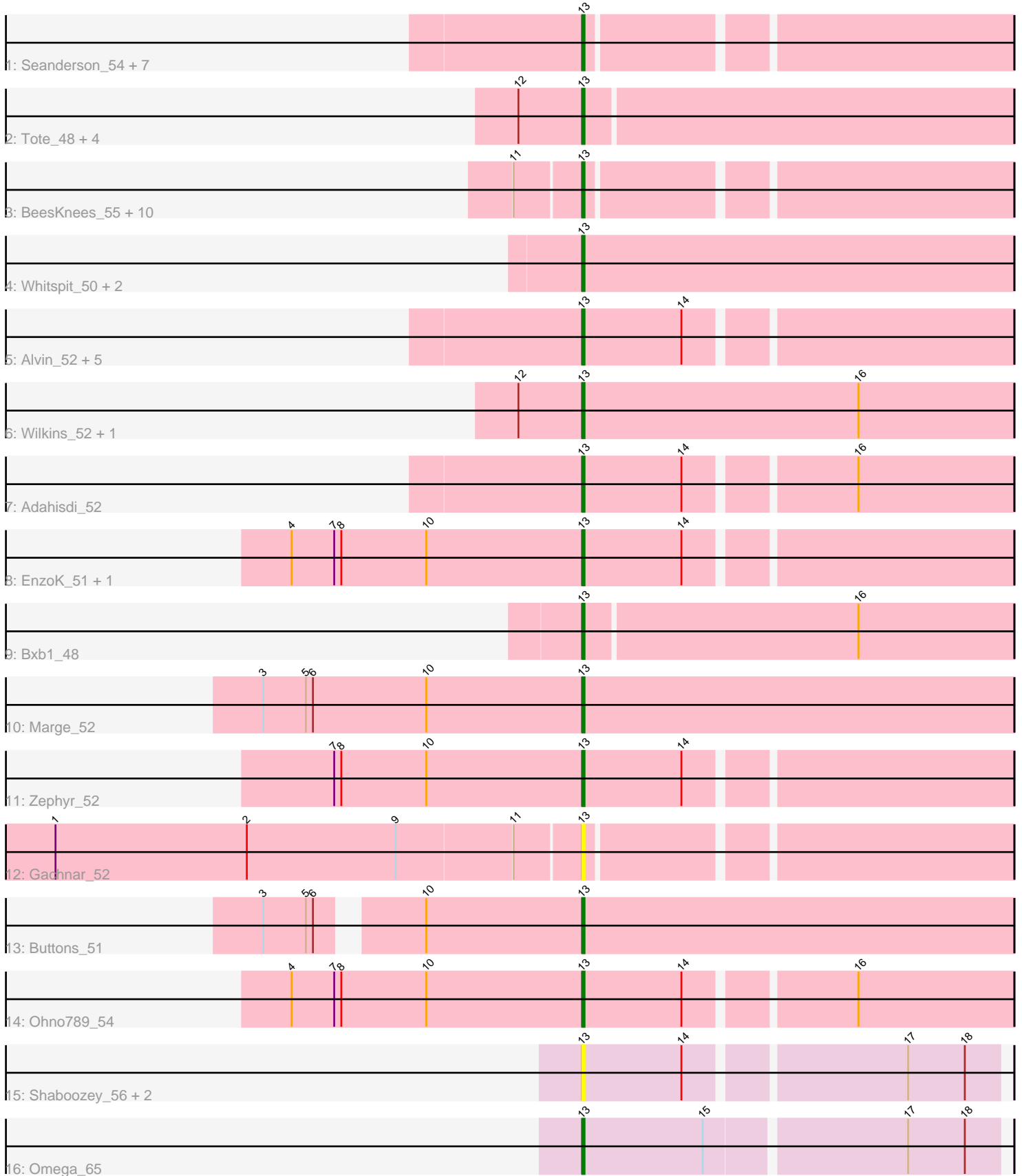


Pham 298552



Note: Tracks are now grouped by subcluster and scaled. Switching in subcluster is indicated by changes in track color. Track scale is now set by default to display the region 30 bp upstream of start 1 to 30 bp downstream of the last possible start. If this default region is judged to be packed too tightly with annotated starts, the track will be further scaled to only show that region of the ORF with annotated starts. This action will be indicated by adding "Zoomed" to the title. For starts, yellow indicates the location of called starts comprised solely of Glimmer/GeneMark auto-annotations, green indicates the location of called starts with at least 1 manual gene annotation.

## Pham 298552 Report

This analysis was run 06/08/26 on database version 649.

Pham number 298552 has 48 members, 5 are drafts.

Phages represented in each track:

- Track 1 : Seanderson\_54, Bruns\_51, Scowl\_53, Dreamboat\_54, PherrisBueller\_52, Jasper\_54, Barriga\_53, Acme\_54
- Track 2 : Tote\_48, Seabiscuit\_55, Swole\_53, JuliaChild\_53, McGuire\_54
- Track 3 : BeesKnees\_55, Dynamix\_54, DreamCatcher\_56, Killigrew\_53, Pari\_54, Corvo\_53, Smeagol\_54, Moose\_52, SwissCheese\_54, Papez\_55, Forsytheast\_52
- Track 4 : Whitspit\_50, Sunshine924\_54, Alsfro\_56
- Track 5 : Alvin\_52, MrGordo\_52, DrFeelGood\_50, Trouble\_55, Big3\_52, Zeeculate\_50
- Track 6 : Wilkins\_52, Topgun\_52
- Track 7 : Adahisdi\_52
- Track 8 : EnzoK\_51, Dulcie\_53
- Track 9 : Bxb1\_48
- Track 10 : Marge\_52
- Track 11 : Zephyr\_52
- Track 12 : Gachnar\_52
- Track 13 : Buttons\_51
- Track 14 : Ohno789\_54
- Track 15 : Shaboozey\_56, Gonephishing\_63, BronnyJames\_57
- Track 16 : Omega\_65

### ***Summary of Final Annotations (See graph section above for start numbers):***

The start number called the most often in the published annotations is 13, it was called in 43 of the 43 non-draft genes in the pham.

Genes that call this "Most Annotated" start:

- Acme\_54, Adahisdi\_52, Alsfro\_56, Alvin\_52, Barriga\_53, BeesKnees\_55, Big3\_52, BronnyJames\_57, Bruns\_51, Buttons\_51, Bxb1\_48, Corvo\_53, DrFeelGood\_50, DreamCatcher\_56, Dreamboat\_54, Dulcie\_53, Dynamix\_54, EnzoK\_51, Forsytheast\_52, Gachnar\_52, Gonephishing\_63, Jasper\_54, JuliaChild\_53, Killigrew\_53, Marge\_52, McGuire\_54, Moose\_52, MrGordo\_52, Ohno789\_54, Omega\_65, Papez\_55, Pari\_54, PherrisBueller\_52, Scowl\_53, Seabiscuit\_55, Seanderson\_54, Shaboozey\_56, Smeagol\_54, Sunshine924\_54, SwissCheese\_54, Swole\_53, Topgun\_52, Tote\_48, Trouble\_55, Whitspit\_50, Wilkins\_52, Zeeculate\_50,

Zephyr\_52,

Genes that have the "Most Annotated" start but do not call it:

- 

Genes that do not have the "Most Annotated" start:

- 

### Summary by start number:

Start 13:

- Found in 48 of 48 ( 100.0% ) of genes in pham
- Manual Annotations of this start: 43 of 43
- Called 100.0% of time when present
- Phage (with cluster) where this start called: Acme\_54 (A1), Adahisdi\_52 (A1), Alsfro\_56 (A1), Alvin\_52 (A1), Barriga\_53 (A1), BeesKnees\_55 (A1), Big3\_52 (A1), BronnyJames\_57 (J), Bruns\_51 (A1), Buttons\_51 (A1), Bxb1\_48 (A1), Corvo\_53 (A1), DrFeelGood\_50 (A1), DreamCatcher\_56 (A1), Dreamboat\_54 (A1), Dulcie\_53 (A1), Dynamix\_54 (A1), EnzoK\_51 (A1), Forsytheast\_52 (A1), Gachnar\_52 (A1), Gonephishing\_63 (J), Jasper\_54 (A1), JuliaChild\_53 (A1), Killigrew\_53 (A1), Marge\_52 (A1), McGuire\_54 (A1), Moose\_52 (A1), MrGordo\_52 (A1), Ohno789\_54 (A1), Omega\_65 (J), Papez\_55 (A1), Pari\_54 (A1), PherrisBueller\_52 (A1), Scowl\_53 (A1), Seabiscuit\_55 (A1), Seanderson\_54 (A1), Shaboozey\_56 (J), Smeagol\_54 (A1), Sunshine924\_54 (A1), SwissCheese\_54 (A1), Swole\_53 (A1), Topgun\_52 (A1), Tote\_48 (A1), Trouble\_55 (A1), Whitspit\_50 (A1), Wilkins\_52 (A1), Zeeculate\_50 (A1), Zephyr\_52 (A1),

### Summary by clusters:

There are 2 clusters represented in this pham: A1, J,

Info for manual annotations of cluster A1:

- Start number 13 was manually annotated 42 times for cluster A1.

Info for manual annotations of cluster J:

- Start number 13 was manually annotated 1 time for cluster J.

### Gene Information:

Gene: Acme\_54 Start: 37720, Stop: 37550, Start Num: 13

Candidate Starts for Acme\_54:

(Start: 13 @37720 has 43 MA's),

Gene: Adahisdi\_52 Start: 38524, Stop: 38351, Start Num: 13

Candidate Starts for Adahisdi\_52:

(Start: 13 @38524 has 43 MA's), (14, 38482), (16, 38416),

Gene: Alsfro\_56 Start: 37894, Stop: 37724, Start Num: 13

Candidate Starts for Alsfro\_56:

(Start: 13 @37894 has 43 MA's),

Gene: Alvin\_52 Start: 38173, Stop: 38000, Start Num: 13  
Candidate Starts for Alvin\_52:  
(Start: 13 @38173 has 43 MA's), (14, 38131),

Gene: Barriga\_53 Start: 37279, Stop: 37109, Start Num: 13  
Candidate Starts for Barriga\_53:  
(Start: 13 @37279 has 43 MA's),

Gene: BeesKnees\_55 Start: 38051, Stop: 37881, Start Num: 13  
Candidate Starts for BeesKnees\_55:  
(11, 38078), (Start: 13 @38051 has 43 MA's),

Gene: Big3\_52 Start: 38865, Stop: 38692, Start Num: 13  
Candidate Starts for Big3\_52:  
(Start: 13 @38865 has 43 MA's), (14, 38823),

Gene: BronnyJames\_57 Start: 41950, Stop: 41783, Start Num: 13  
Candidate Starts for BronnyJames\_57:  
(Start: 13 @41950 has 43 MA's), (14, 41908), (17, 41821), (18, 41797),

Gene: Bruns\_51 Start: 37204, Stop: 37034, Start Num: 13  
Candidate Starts for Bruns\_51:  
(Start: 13 @37204 has 43 MA's),

Gene: Buttons\_51 Start: 36152, Stop: 35970, Start Num: 13  
Candidate Starts for Buttons\_51:  
(3, 36275), (5, 36257), (6, 36254), (10, 36218), (Start: 13 @36152 has 43 MA's),

Gene: Bxb1\_48 Start: 36963, Stop: 36784, Start Num: 13  
Candidate Starts for Bxb1\_48:  
(Start: 13 @36963 has 43 MA's), (16, 36849),

Gene: Corvo\_53 Start: 39106, Stop: 38936, Start Num: 13  
Candidate Starts for Corvo\_53:  
(11, 39133), (Start: 13 @39106 has 43 MA's),

Gene: DrFeelGood\_50 Start: 37621, Stop: 37448, Start Num: 13  
Candidate Starts for DrFeelGood\_50:  
(Start: 13 @37621 has 43 MA's), (14, 37579),

Gene: DreamCatcher\_56 Start: 39029, Stop: 38859, Start Num: 13  
Candidate Starts for DreamCatcher\_56:  
(11, 39056), (Start: 13 @39029 has 43 MA's),

Gene: Dreamboat\_54 Start: 37374, Stop: 37204, Start Num: 13  
Candidate Starts for Dreamboat\_54:  
(Start: 13 @37374 has 43 MA's),

Gene: Dulcie\_53 Start: 37830, Stop: 37657, Start Num: 13  
Candidate Starts for Dulcie\_53:  
(4, 37953), (7, 37935), (8, 37932), (10, 37896), (Start: 13 @37830 has 43 MA's), (14, 37788),

Gene: Dynamix\_54 Start: 37849, Stop: 37679, Start Num: 13

Candidate Starts for Dynamix\_54:  
(11, 37876), (Start: 13 @37849 has 43 MA's),

Gene: EnzoK\_51 Start: 35427, Stop: 35254, Start Num: 13  
Candidate Starts for EnzoK\_51:  
(4, 35550), (7, 35532), (8, 35529), (10, 35493), (Start: 13 @35427 has 43 MA's), (14, 35385),

Gene: Forsytheast\_52 Start: 37422, Stop: 37252, Start Num: 13  
Candidate Starts for Forsytheast\_52:  
(11, 37449), (Start: 13 @37422 has 43 MA's),

Gene: Gachnar\_52 Start: 37034, Stop: 36864, Start Num: 13  
Candidate Starts for Gachnar\_52:  
(1, 37253), (2, 37172), (9, 37109), (11, 37061), (Start: 13 @37034 has 43 MA's),

Gene: Gonephishing\_63 Start: 44987, Stop: 44820, Start Num: 13  
Candidate Starts for Gonephishing\_63:  
(Start: 13 @44987 has 43 MA's), (14, 44945), (17, 44858), (18, 44834),

Gene: Jasper\_54 Start: 37260, Stop: 37090, Start Num: 13  
Candidate Starts for Jasper\_54:  
(Start: 13 @37260 has 43 MA's),

Gene: JuliaChild\_53 Start: 37630, Stop: 37451, Start Num: 13  
Candidate Starts for JuliaChild\_53:  
(12, 37657), (Start: 13 @37630 has 43 MA's),

Gene: Killigrew\_53 Start: 38829, Stop: 38659, Start Num: 13  
Candidate Starts for Killigrew\_53:  
(11, 38856), (Start: 13 @38829 has 43 MA's),

Gene: Marge\_52 Start: 38082, Stop: 37900, Start Num: 13  
Candidate Starts for Marge\_52:  
(3, 38217), (5, 38199), (6, 38196), (10, 38148), (Start: 13 @38082 has 43 MA's),

Gene: McGuire\_54 Start: 37727, Stop: 37548, Start Num: 13  
Candidate Starts for McGuire\_54:  
(12, 37754), (Start: 13 @37727 has 43 MA's),

Gene: Moose\_52 Start: 37422, Stop: 37252, Start Num: 13  
Candidate Starts for Moose\_52:  
(11, 37449), (Start: 13 @37422 has 43 MA's),

Gene: MrGordo\_52 Start: 38105, Stop: 37932, Start Num: 13  
Candidate Starts for MrGordo\_52:  
(Start: 13 @38105 has 43 MA's), (14, 38063),

Gene: Ohno789\_54 Start: 38616, Stop: 38443, Start Num: 13  
Candidate Starts for Ohno789\_54:  
(4, 38739), (7, 38721), (8, 38718), (10, 38682), (Start: 13 @38616 has 43 MA's), (14, 38574), (16, 38508),

Gene: Omega\_65 Start: 47992, Stop: 47822, Start Num: 13

Candidate Starts for Omega\_65:  
(Start: 13 @47992 has 43 MA's), (15, 47941), (17, 47860), (18, 47836),

Gene: Papez\_55 Start: 40025, Stop: 39855, Start Num: 13  
Candidate Starts for Papez\_55:  
(11, 40052), (Start: 13 @40025 has 43 MA's),

Gene: Pari\_54 Start: 37560, Stop: 37390, Start Num: 13  
Candidate Starts for Pari\_54:  
(11, 37587), (Start: 13 @37560 has 43 MA's),

Gene: PherrisBueller\_52 Start: 36893, Stop: 36723, Start Num: 13  
Candidate Starts for PherrisBueller\_52:  
(Start: 13 @36893 has 43 MA's),

Gene: Scowl\_53 Start: 38197, Stop: 38027, Start Num: 13  
Candidate Starts for Scowl\_53:  
(Start: 13 @38197 has 43 MA's),

Gene: Seabiscuit\_55 Start: 37814, Stop: 37635, Start Num: 13  
Candidate Starts for Seabiscuit\_55:  
(12, 37841), (Start: 13 @37814 has 43 MA's),

Gene: Seanderson\_54 Start: 39574, Stop: 39404, Start Num: 13  
Candidate Starts for Seanderson\_54:  
(Start: 13 @39574 has 43 MA's),

Gene: Shaboozey\_56 Start: 41971, Stop: 41804, Start Num: 13  
Candidate Starts for Shaboozey\_56:  
(Start: 13 @41971 has 43 MA's), (14, 41929), (17, 41842), (18, 41818),

Gene: Smeagol\_54 Start: 39158, Stop: 38988, Start Num: 13  
Candidate Starts for Smeagol\_54:  
(11, 39185), (Start: 13 @39158 has 43 MA's),

Gene: Sunshine924\_54 Start: 37412, Stop: 37242, Start Num: 13  
Candidate Starts for Sunshine924\_54:  
(Start: 13 @37412 has 43 MA's),

Gene: SwissCheese\_54 Start: 37922, Stop: 37752, Start Num: 13  
Candidate Starts for SwissCheese\_54:  
(11, 37949), (Start: 13 @37922 has 43 MA's),

Gene: Swole\_53 Start: 37105, Stop: 36926, Start Num: 13  
Candidate Starts for Swole\_53:  
(12, 37132), (Start: 13 @37105 has 43 MA's),

Gene: Topgun\_52 Start: 37492, Stop: 37310, Start Num: 13  
Candidate Starts for Topgun\_52:  
(12, 37519), (Start: 13 @37492 has 43 MA's), (16, 37375),

Gene: Tote\_48 Start: 34372, Stop: 34193, Start Num: 13  
Candidate Starts for Tote\_48:

(12, 34399), (Start: 13 @34372 has 43 MA's),

Gene: Trouble\_55 Start: 39314, Stop: 39141, Start Num: 13

Candidate Starts for Trouble\_55:

(Start: 13 @39314 has 43 MA's), (14, 39272),

Gene: Whitspit\_50 Start: 35409, Stop: 35227, Start Num: 13

Candidate Starts for Whitspit\_50:

(Start: 13 @35409 has 43 MA's),

Gene: Wilkins\_52 Start: 37422, Stop: 37240, Start Num: 13

Candidate Starts for Wilkins\_52:

(12, 37449), (Start: 13 @37422 has 43 MA's), (16, 37305),

Gene: Zeeculate\_50 Start: 38630, Stop: 38457, Start Num: 13

Candidate Starts for Zeeculate\_50:

(Start: 13 @38630 has 43 MA's), (14, 38588),

Gene: Zephyr\_52 Start: 37519, Stop: 37346, Start Num: 13

Candidate Starts for Zephyr\_52:

(7, 37624), (8, 37621), (10, 37585), (Start: 13 @37519 has 43 MA's), (14, 37477),