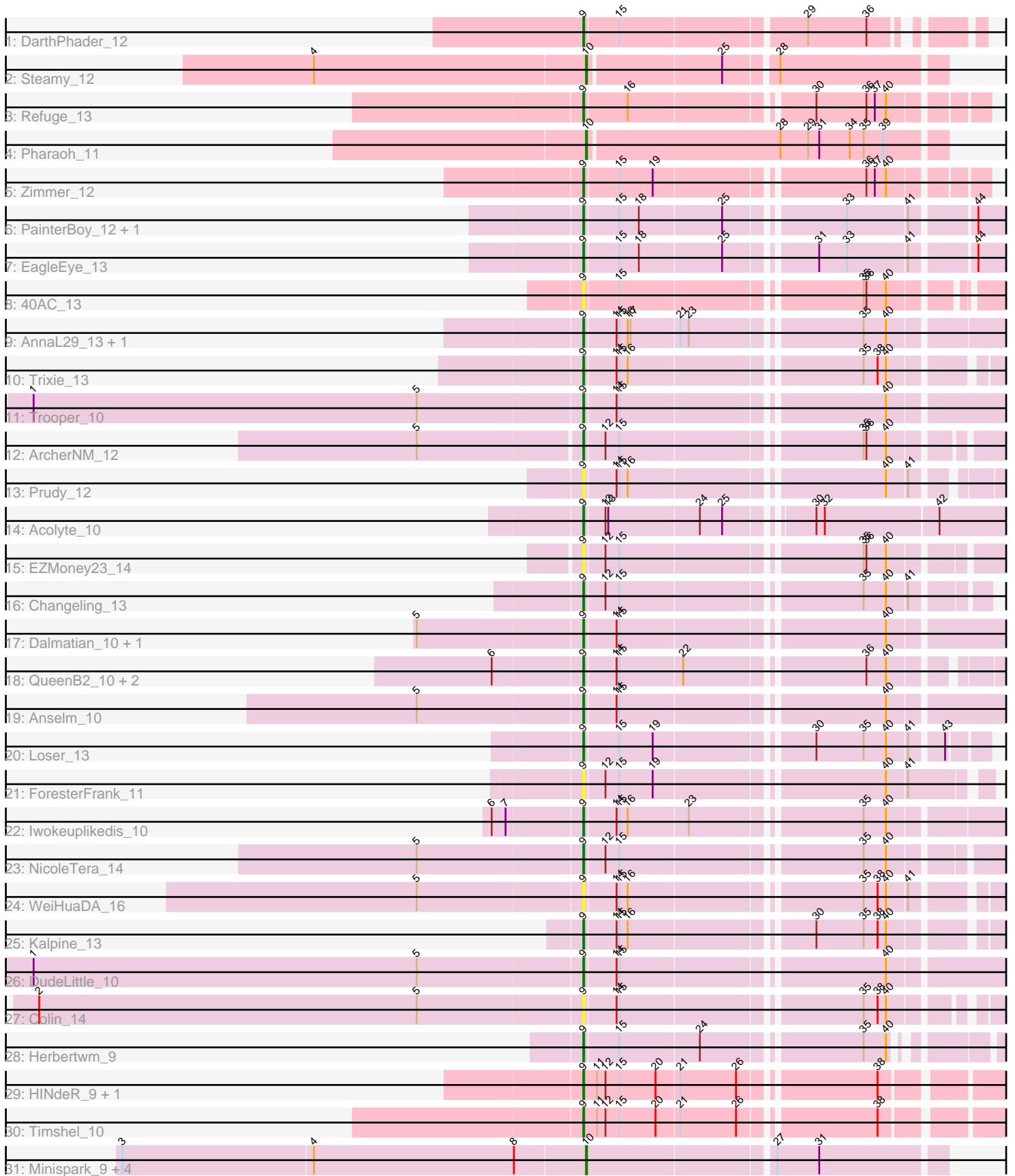


Pham 298590



Note: Tracks are now grouped by subcluster and scaled. Switching in subcluster is indicated by changes in track color. Track scale is now set by default to display the region 30 bp upstream of start 1 to 30 bp downstream of the last possible start. If this default region is judged to be packed too tightly with annotated starts, the track will be further scaled to only show that region of the ORF with annotated starts. This action will be indicated by adding "Zoomed" to the title. For starts, yellow indicates the location of called starts comprised solely of Glimmer/GeneMark auto-annotations, green indicates the location of called starts with at least 1 manual gene annotation.

Pham 298590 Report

This analysis was run 06/08/26 on database version 649.

Pham number 298590 has 41 members, 10 are drafts.

Phages represented in each track:

- Track 1 : DarthPhader_12
- Track 2 : Steamy_12
- Track 3 : Refuge_13
- Track 4 : Pharaoh_11
- Track 5 : Zimmer_12
- Track 6 : PainterBoy_12, Lucyedi_12
- Track 7 : EagleEye_13
- Track 8 : 40AC_13
- Track 9 : AnnaL29_13, RedRock_13
- Track 10 : Trixie_13
- Track 11 : Trooper_10
- Track 12 : ArcherNM_12
- Track 13 : Prudy_12
- Track 14 : Acolyte_10
- Track 15 : EZMoney23_14
- Track 16 : Changeling_13
- Track 17 : Dalmatian_10, Retro23_10
- Track 18 : QueenB2_10, Heffalump_12, Fameo_10
- Track 19 : Anselm_10
- Track 20 : Loser_13
- Track 21 : ForesterFrank_11
- Track 22 : Iwokeuplikedis_10
- Track 23 : NicoleTera_14
- Track 24 : WeiHuaDA_16
- Track 25 : Kalpine_13
- Track 26 : DudeLittle_10
- Track 27 : Colin_14
- Track 28 : Herbertwm_9
- Track 29 : HINdeR_9, DroogsArmy_10
- Track 30 : Timshel_10
- Track 31 : Minispark_9, Rahalelujah_10, CogOmlette_9, WorldCup_9, Bellris_9

Summary of Final Annotations (See graph section above for start numbers):

The start number called the most often in the published annotations is 9, it was called in 28 of the 31 non-draft genes in the pham.

Genes that call this "Most Annotated" start:

- 40AC_13, Acolyte_10, AnnaL29_13, Anselm_10, ArcherNM_12, Changeling_13, Colin_14, Dalmatian_10, DarthPhader_12, DroogsArmy_10, DudeLittle_10, EZMoney23_14, EagleEye_13, Fameo_10, ForesterFrank_11, HINdeR_9, Heffalump_12, Herbertwm_9, Iwokeuplikedis_10, Kalpine_13, Loser_13, Lucyedi_12, NicoleTera_14, PainterBoy_12, Prudy_12, QueenB2_10, RedRock_13, Refuge_13, Retro23_10, Timshel_10, Trixie_13, Trooper_10, WeiHuaDA_16, Zimmer_12,

Genes that have the "Most Annotated" start but do not call it:

-

Genes that do not have the "Most Annotated" start:

- Bellris_9, CogOmlette_9, Minispark_9, Pharaoh_11, Rahalelujah_10, Steamy_12, WorldCup_9,

Summary by start number:

Start 9:

- Found in 34 of 41 (82.9%) of genes in pham
- Manual Annotations of this start: 28 of 31
- Called 100.0% of time when present
- Phage (with cluster) where this start called: 40AC_13 (A17), Acolyte_10 (A2), AnnaL29_13 (A2), Anselm_10 (A2), ArcherNM_12 (A2), Changeling_13 (A2), Colin_14 (A2), Dalmatian_10 (A2), DarthPhader_12 (A12), DroogsArmy_10 (A7), DudeLittle_10 (A2), EZMoney23_14 (A2), EagleEye_13 (A16), Fameo_10 (A2), ForesterFrank_11 (A2), HINdeR_9 (A7), Heffalump_12 (A2), Herbertwm_9 (A2), Iwokeuplikedis_10 (A2), Kalpine_13 (A2), Loser_13 (A2), Lucyedi_12 (A16), NicoleTera_14 (A2), PainterBoy_12 (A16), Prudy_12 (A2), QueenB2_10 (A2), RedRock_13 (A2), Refuge_13 (A12), Retro23_10 (A2), Timshel_10 (A7), Trixie_13 (A2), Trooper_10 (A2), WeiHuaDA_16 (A2), Zimmer_12 (A12),

Start 10:

- Found in 7 of 41 (17.1%) of genes in pham
- Manual Annotations of this start: 3 of 31
- Called 100.0% of time when present
- Phage (with cluster) where this start called: Bellris_9 (A9), CogOmlette_9 (A9), Minispark_9 (A9), Pharaoh_11 (A12), Rahalelujah_10 (A9), Steamy_12 (A12), WorldCup_9 (A9),

Summary by clusters:

There are 6 clusters represented in this pham: A17, A16, A12, A2, A7, A9,

Info for manual annotations of cluster A12:

- Start number 9 was manually annotated 3 times for cluster A12.
- Start number 10 was manually annotated 2 times for cluster A12.

Info for manual annotations of cluster A16:

- Start number 9 was manually annotated 3 times for cluster A16.

Info for manual annotations of cluster A2:

- Start number 9 was manually annotated 19 times for cluster A2.

Info for manual annotations of cluster A7:

- Start number 9 was manually annotated 3 times for cluster A7.

Info for manual annotations of cluster A9:

- Start number 10 was manually annotated 1 time for cluster A9.

Gene Information:

Gene: 40AC_13 Start: 8077, Stop: 8496, Start Num: 9

Candidate Starts for 40AC_13:

(Start: 9 @8077 has 28 MA's), (15, 8113), (35, 8353), (36, 8356), (40, 8377),

Gene: Acolyte_10 Start: 6056, Stop: 6523, Start Num: 9

Candidate Starts for Acolyte_10:

(Start: 9 @6056 has 28 MA's), (12, 6077), (13, 6080), (24, 6176), (25, 6200), (30, 6278), (32, 6287), (42, 6407),

Gene: AnnaL29_13 Start: 7888, Stop: 8322, Start Num: 9

Candidate Starts for AnnaL29_13:

(Start: 9 @7888 has 28 MA's), (14, 7921), (15, 7924), (16, 7933), (17, 7936), (21, 7987), (23, 7996), (35, 8164), (40, 8188),

Gene: Anselm_10 Start: 6094, Stop: 6534, Start Num: 9

Candidate Starts for Anselm_10:

(5, 5920), (Start: 9 @6094 has 28 MA's), (14, 6127), (15, 6130), (40, 6394),

Gene: ArcherNM_12 Start: 7805, Stop: 8230, Start Num: 9

Candidate Starts for ArcherNM_12:

(5, 7634), (Start: 9 @7805 has 28 MA's), (12, 7826), (15, 7841), (35, 8081), (36, 8084), (40, 8105),

Gene: Bellris_9 Start: 5820, Stop: 6185, Start Num: 10

Candidate Starts for Bellris_9:

(3, 5325), (4, 5529), (8, 5745), (Start: 10 @5820 has 3 MA's), (27, 6012), (31, 6057),

Gene: Changeling_13 Start: 7898, Stop: 8287, Start Num: 9

Candidate Starts for Changeling_13:

(Start: 9 @7898 has 28 MA's), (12, 7919), (15, 7934), (35, 8174), (40, 8198), (41, 8219),

Gene: CogOmlette_9 Start: 5820, Stop: 6185, Start Num: 10

Candidate Starts for CogOmlette_9:

(3, 5325), (4, 5529), (8, 5745), (Start: 10 @5820 has 3 MA's), (27, 6012), (31, 6057),

Gene: Colin_14 Start: 7692, Stop: 8105, Start Num: 9

Candidate Starts for Colin_14:

(2, 7110), (5, 7518), (Start: 9 @7692 has 28 MA's), (14, 7725), (15, 7728), (35, 7968), (38, 7983), (40, 7992),

Gene: Dalmatian_10 Start: 6085, Stop: 6525, Start Num: 9
Candidate Starts for Dalmatian_10:
(5, 5911), (Start: 9 @6085 has 28 MA's), (14, 6118), (15, 6121), (40, 6385),

Gene: DarthPhader_12 Start: 7926, Stop: 8303, Start Num: 9
Candidate Starts for DarthPhader_12:
(Start: 9 @7926 has 28 MA's), (15, 7962), (29, 8151), (36, 8214),

Gene: DroogsArmy_10 Start: 6654, Stop: 7067, Start Num: 9
Candidate Starts for DroogsArmy_10:
(Start: 9 @6654 has 28 MA's), (11, 6669), (12, 6678), (15, 6693), (20, 6732), (21, 6756), (26, 6816),
(38, 6948),

Gene: DudeLittle_10 Start: 6087, Stop: 6527, Start Num: 9
Candidate Starts for DudeLittle_10:
(1, 5499), (5, 5913), (Start: 9 @6087 has 28 MA's), (14, 6120), (15, 6123), (40, 6387),

Gene: EZMoney23_14 Start: 7982, Stop: 8410, Start Num: 9
Candidate Starts for EZMoney23_14:
(Start: 9 @7982 has 28 MA's), (12, 8003), (15, 8018), (35, 8258), (36, 8261), (40, 8282),

Gene: EagleEye_13 Start: 7139, Stop: 7555, Start Num: 9
Candidate Starts for EagleEye_13:
(Start: 9 @7139 has 28 MA's), (15, 7175), (18, 7196), (25, 7283), (31, 7367), (33, 7397), (41, 7460),
(44, 7520),

Gene: Fameo_10 Start: 6032, Stop: 6451, Start Num: 9
Candidate Starts for Fameo_10:
(6, 5939), (Start: 9 @6032 has 28 MA's), (14, 6065), (15, 6068), (22, 6134), (36, 6311), (40, 6332),

Gene: ForesterFrank_11 Start: 7777, Stop: 8172, Start Num: 9
Candidate Starts for ForesterFrank_11:
(Start: 9 @7777 has 28 MA's), (12, 7798), (15, 7813), (19, 7849), (40, 8077), (41, 8098),

Gene: HINdeR_9 Start: 6752, Stop: 7165, Start Num: 9
Candidate Starts for HINdeR_9:
(Start: 9 @6752 has 28 MA's), (11, 6767), (12, 6776), (15, 6791), (20, 6830), (21, 6854), (26, 6914),
(38, 7046),

Gene: Heffalump_12 Start: 7831, Stop: 8250, Start Num: 9
Candidate Starts for Heffalump_12:
(6, 7738), (Start: 9 @7831 has 28 MA's), (14, 7864), (15, 7867), (22, 7933), (36, 8110), (40, 8131),

Gene: Herbertwm_9 Start: 5886, Stop: 6293, Start Num: 9
Candidate Starts for Herbertwm_9:
(Start: 9 @5886 has 28 MA's), (15, 5922), (24, 6006), (35, 6162), (40, 6186),

Gene: Iwokeuplikedis_10 Start: 5757, Stop: 6194, Start Num: 9
Candidate Starts for Iwokeuplikedis_10:
(6, 5664), (7, 5679), (Start: 9 @5757 has 28 MA's), (14, 5790), (15, 5793), (16, 5802), (23, 5865), (35,
6033), (40, 6057),

Gene: Kalpine_13 Start: 7796, Stop: 8218, Start Num: 9

Candidate Starts for Kalpine_13:

(Start: 9 @7796 has 28 MA's), (14, 7829), (15, 7832), (16, 7841), (30, 8021), (35, 8072), (38, 8087), (40, 8096),

Gene: Loser_13 Start: 7855, Stop: 8244, Start Num: 9

Candidate Starts for Loser_13:

(Start: 9 @7855 has 28 MA's), (15, 7891), (19, 7927), (30, 8080), (35, 8131), (40, 8155), (41, 8176), (43, 8206),

Gene: Lucyedi_12 Start: 7076, Stop: 7492, Start Num: 9

Candidate Starts for Lucyedi_12:

(Start: 9 @7076 has 28 MA's), (15, 7112), (18, 7133), (25, 7220), (33, 7334), (41, 7397), (44, 7457),

Gene: Minispark_9 Start: 5820, Stop: 6185, Start Num: 10

Candidate Starts for Minispark_9:

(3, 5325), (4, 5529), (8, 5745), (Start: 10 @5820 has 3 MA's), (27, 6012), (31, 6057),

Gene: NicoleTera_14 Start: 7753, Stop: 8181, Start Num: 9

Candidate Starts for NicoleTera_14:

(5, 7579), (Start: 9 @7753 has 28 MA's), (12, 7774), (15, 7789), (35, 8029), (40, 8053),

Gene: PainterBoy_12 Start: 7076, Stop: 7492, Start Num: 9

Candidate Starts for PainterBoy_12:

(Start: 9 @7076 has 28 MA's), (15, 7112), (18, 7133), (25, 7220), (33, 7334), (41, 7397), (44, 7457),

Gene: Pharaoh_11 Start: 7518, Stop: 7892, Start Num: 10

Candidate Starts for Pharaoh_11:

(Start: 10 @7518 has 3 MA's), (28, 7722), (29, 7752), (31, 7764), (34, 7797), (35, 7812), (39, 7833),

Gene: Prudy_12 Start: 7821, Stop: 8240, Start Num: 9

Candidate Starts for Prudy_12:

(Start: 9 @7821 has 28 MA's), (14, 7854), (15, 7857), (16, 7866), (40, 8121), (41, 8142),

Gene: QueenB2_10 Start: 6032, Stop: 6451, Start Num: 9

Candidate Starts for QueenB2_10:

(6, 5939), (Start: 9 @6032 has 28 MA's), (14, 6065), (15, 6068), (22, 6134), (36, 6311), (40, 6332),

Gene: Rahalelujah_10 Start: 5820, Stop: 6185, Start Num: 10

Candidate Starts for Rahalelujah_10:

(3, 5325), (4, 5529), (8, 5745), (Start: 10 @5820 has 3 MA's), (27, 6012), (31, 6057),

Gene: RedRock_13 Start: 7965, Stop: 8399, Start Num: 9

Candidate Starts for RedRock_13:

(Start: 9 @7965 has 28 MA's), (14, 7998), (15, 8001), (16, 8010), (17, 8013), (21, 8064), (23, 8073), (35, 8241), (40, 8265),

Gene: Refuge_13 Start: 8359, Stop: 8748, Start Num: 9

Candidate Starts for Refuge_13:

(Start: 9 @8359 has 28 MA's), (16, 8404), (30, 8584), (36, 8638), (37, 8647), (40, 8659),

Gene: Retro23_10 Start: 6086, Stop: 6526, Start Num: 9

Candidate Starts for Retro23_10:

(5, 5912), (Start: 9 @6086 has 28 MA's), (14, 6119), (15, 6122), (40, 6386),

Gene: Steamy_12 Start: 7580, Stop: 7939, Start Num: 10

Candidate Starts for Steamy_12:

(4, 7289), (Start: 10 @7580 has 3 MA's), (25, 7718), (28, 7769),

Gene: Timshel_10 Start: 6896, Stop: 7309, Start Num: 9

Candidate Starts for Timshel_10:

(Start: 9 @6896 has 28 MA's), (11, 6911), (12, 6920), (15, 6935), (20, 6974), (21, 6998), (26, 7058), (38, 7190),

Gene: Trixie_13 Start: 7668, Stop: 8090, Start Num: 9

Candidate Starts for Trixie_13:

(Start: 9 @7668 has 28 MA's), (14, 7701), (15, 7704), (16, 7713), (35, 7944), (38, 7959), (40, 7968),

Gene: Trooper_10 Start: 5793, Stop: 6233, Start Num: 9

Candidate Starts for Trooper_10:

(1, 5205), (5, 5619), (Start: 9 @5793 has 28 MA's), (14, 5826), (15, 5829), (40, 6093),

Gene: WeiHuaDA_16 Start: 8278, Stop: 8700, Start Num: 9

Candidate Starts for WeiHuaDA_16:

(5, 8104), (Start: 9 @8278 has 28 MA's), (14, 8311), (15, 8314), (16, 8323), (35, 8554), (38, 8569), (40, 8578), (41, 8599),

Gene: WorldCup_9 Start: 5820, Stop: 6185, Start Num: 10

Candidate Starts for WorldCup_9:

(3, 5325), (4, 5529), (8, 5745), (Start: 10 @5820 has 3 MA's), (27, 6012), (31, 6057),

Gene: Zimmer_12 Start: 7633, Stop: 8022, Start Num: 9

Candidate Starts for Zimmer_12:

(Start: 9 @7633 has 28 MA's), (15, 7669), (19, 7705), (36, 7912), (37, 7921), (40, 7933),